

# InvisiClean Claro 4-in-1 True HEPA Air Purifier



Model No.: IC-4524

If you have any questions, please email us at [Support@InvisiClean.com](mailto:Support@InvisiClean.com) or call us at 818-787-1188 Monday – Friday 9AM-5PM Pacific time for immediate assistance.

## Content

Contents.....	1
Safety Precautions.....	2-3
Parts diagram.....	4
Controls & Use.....	5-6
Features & Functions.....	7
Maintenance.....	8-10
Troubleshooting.....	11
Warranty.....	12

## READ AND SAVE THESE INSTRUCTIONS

### WARNINGS

Failure to comply with the warnings listed below may result in electric shock or serious injury.

This product should be used only in accordance with the specifications outlined in this manual. Usage other than what has been specified here may result in serious injury.

When using electrical appliances, basic precautions should always be followed to reduce the risk of fire, electric shock, and injury to persons, including the following:

This product complies with the maximum allowable concentration of ozone of 0.050 parts per million by volume (ppmv) in a 24-hour period. The Health Canada Guideline 2010 recommends that the maximum exposure limit, based on an averaging time of 8 hours, is 0.020 ppmv or less when tested in a sealed, controlled room approximately 30 m<sup>3</sup>."

#### • **Read all instructions before using appliance.**

- **IMPORTANT** - This appliance has a polarized plug (one blade is wider than the other). To reduce the risk of electric shock, this plug is intended to fit in a polarized outlet only one way. If the plug does not fit fully in the outlet, reverse the plug. If it still does not fit, contact a qualified electrician. Do not attempt to defeat this safety feature.
- To avoid fire or shock hazard, plug the appliance directly into an AC electrical outlet.
- Keep the cord out of heavy traffic areas. To avoid fire hazard, NEVER put the cord under rugs, near heat registers, radiator, stoves, and heaters.
- To protect against electrical hazards, DO NOT immerse in water or other liquids. Do not use near water or near objects containing water like vases.
- Children cannot recognize the hazards associated with the usage of electrical appliances. For this reason, always supervise children when they are near the unit.

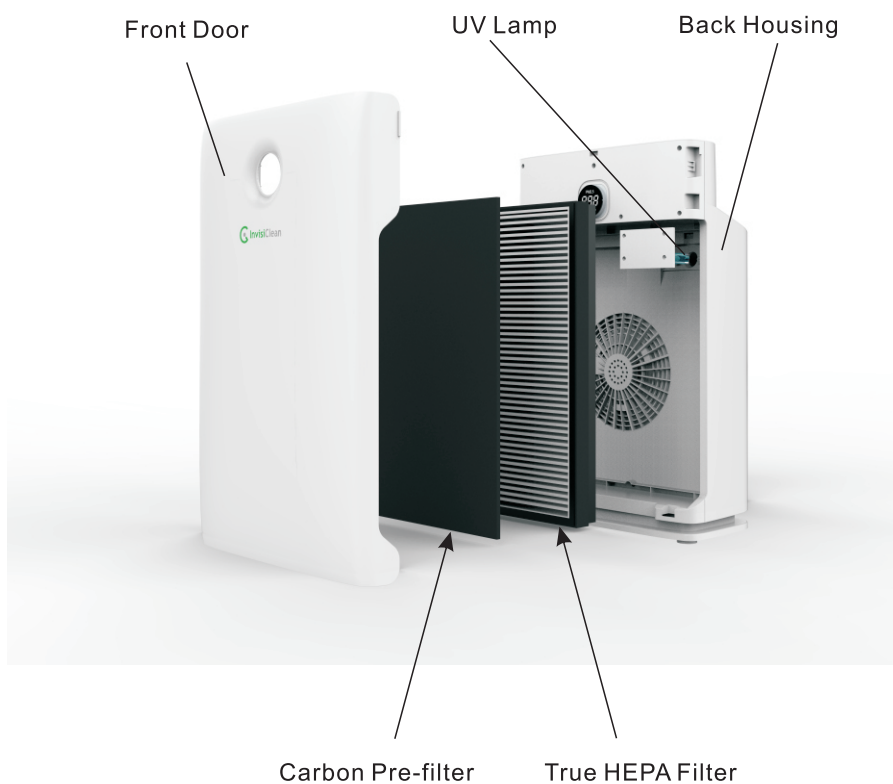
## **READ AND SAVE THESE INSTRUCTIONS**

- Always unplug the air purifier before moving it, opening the grill, changing filters, cleaning or whenever the air purifier is not in use. Be sure to pull by the plug and not the cord.
- NEVER drop or insert any object into any openings.
- DO NOT run cord under carpeting.
- DO NOT cover cord with throw rugs, runners, or similar coverings.
- DO NOT route cord under furniture or appliances. Arrange cord away from traffic area and where it will not be tripped over.
- DO NOT operate any appliance with a damaged cord or plug, if motor fan fails to rotate, after the appliance malfunctions, or if it has been dropped or damaged in any manner. Please contact the manufacturer for assistance.
- Use appliance only for intended household use as described in this manual. Any other use not recommended by the manufacturer may cause fire, electric shock or injury to persons.
- DO NOT use outdoors.
- DO NOT sit or place anything on top of unit.
- NEVER block the air openings, grills/outlets or place on a soft surface such as a bed or sofa, as this could cause the unit to tip over, blocking the air intake or air outlet.
- DO NOT attempt to repair or adjust any electrical or mechanical functions on this unit. Doing so will void your warranty. The inside of the unit contains no user serviceable parts. All servicing should be performed by qualified personnel only.
- WARNING: To reduce the risk of fire or electric shock, do not use this fan with any solid-state speed control device.

**CAUTION: DISCONNECT POWER FROM UNIT BEFORE SERVICING OR REPLACING UV LAMP**

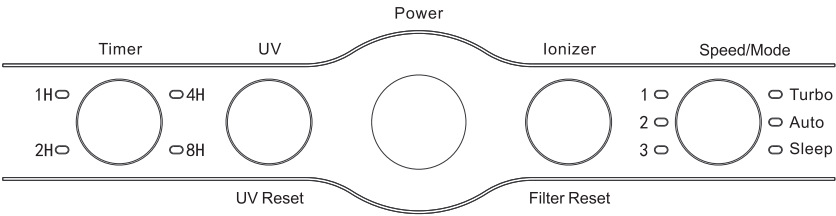
**ATTENTION: COUPER L'ALIMENTATION DE L'ASSEMBLAGE AVANT DE PROCÉDER AU DÉPANNAGE OU REMPLACEMENT DU LAMPE UV**

## Parts diagram:



Controls

Control panel



Button:

Touch Panel

#	Description	Function
1	Timer	Timer with 1 / 2 / 4 / 8 hour options
2	UV/UV reset	UV light switch / UV reset button
3	Power	Power switch to turn unit on
4	Ionizer/Filter reset	Ionizer button / Filters reset
6	Speed/Mode	Fan speeds(1, 2, 3,Turbo, Auto and Sleep mode button

## How to Use

1. Power Button: Turn air purifier on and off.

2. Timer Button:

When you would like the air purifier to auto shut off after a preset amount of time use this button to set the interval. Time can be selected from 1, 2, 4, and 8 hours.

3. UV/ UV Reset Button:

Press UV button once to turn on the UV light; Press UV button again, the UV light will turn off. When the UV light usage reaches 3,000 hours, the UV indicator light will flash indicating it is time to replace the UV lamp. To reset the UV reset indicator, press and hold the UV button for 3 seconds. The unit will beep and the indicator light will turn off.

4. Ionizer/Filter Reset

Press Ionizer button once to turn the ionizer on; Press Ionizer button again, the ionizer will turn off. After the air purifier has been in use for 4,320 hours, the indicator light on the Ionizer button will flash indicating it is time to replace the filter. To reset the filter reset indicator, hold the Ionizer button for 3 seconds. The unit will beep and the indicator light will turn off.

5. Fan Speed/Mode:

Press the Speed/Mode button to cycle between fan speeds 1, 2, 3, & Turbo and Auto mode and Sleep mode.

6. The LCD display on the front will cycle between PM2.5 level, temperature, and humidity.



## Features & Functions

### Features:

1. LCD display showing current PM2.5 levels, temperature, and humidity.
2. Three fan speeds + turbo and automatic and sleep mode.
3. True HEPA filtration system + UV-C light and ionizer effectively filters and removes particulates, germs, smoke, and odors.

Activated carbon pre-filter - effectively blocks hair, paper, and other large materials. The pre-filter helps to prevent the True HEPA filter from clogging and will improve the life of the filter. Activated carbon pre-filter effectively removes the odors in the air.

True HEPA filter: 99.97% filter will remove particles up to 0.3 microns in diameter. Specifically designed to remove dust, cigarette smoke, bacteria, ash, and pollen.

Ionizer outputs millions of negative ions to help clump smaller particles together and make them easier to filter out of the air. UV-C lamp kills bacteria and germs.



## Maintenance

### Filter Replacement:

1. Clean exterior of the air purifier with soft and clean cloth, do not use solvents or harsh chemicals to clean the unit
2. Replace or clean the pre-filter often using the brush attachment of your vacuum cleaner for optimum performance.
3. True HEPA filter needs to be cleaned or replaced every 6-12 months depending on use. Follow the instructions in the diagram to clean or replace. (Figures: A, B, C)

Figure A: Using both hands, pull to open the front cover, and lift up the front cover to access the filters.

Figure B: Remove the filter using the pull tabs on the filter.

Figure C: Insert the replacement filter. For the front cover, please hook the two lower hooks onto the bottom of the unit first then push forward to latch the door in place. For your safety, the unit will not function without the door latched in place.

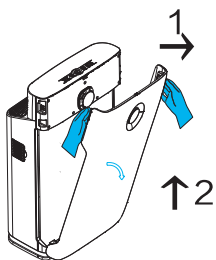


Figure A

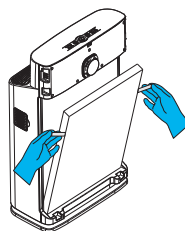


Figure B

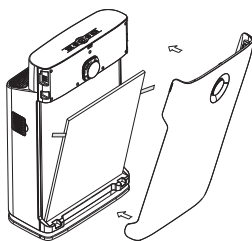


Figure C

## Maintenance

### UV bulb replacement:

When the UV light button starts blinking, it is time to change the UV bulb. To replace the UV-C bulb, please follow the following steps.

- A) Unplug the unit from the wall and remove the front cover and filter.
- B) Unscrew the 4 screws holding UV bulb access door in place.
- C) Pull the UV bulb from the unit and unscrew the bulb from the holder.
- D) Using gloved hands or a towel to prevent fingerprints, carefully screw the new bulb in place.
- E) Insert bulb back into unit and replace door cover in place with 4 screws.

Note:

UV resistant material has been added to the unit.

Never look at the operating UV lamp directly.

Follow the instructions in the diagram on how to replace the UV bulb.

(Figures: A, B, C,D,E)

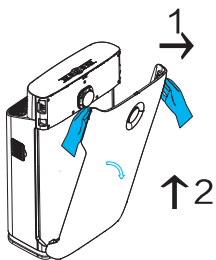


Figure A

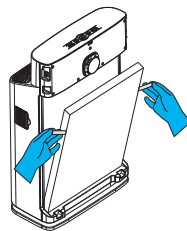


Figure B

## Maintenance

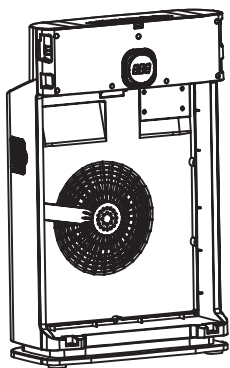


Figure C

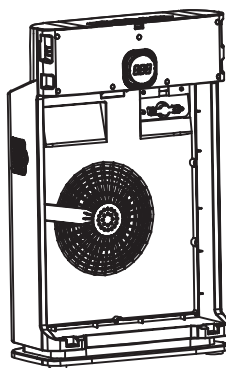


Figure D

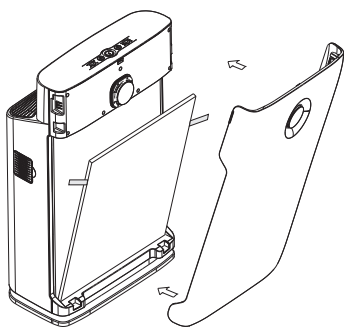


Figure E

## Troubleshooting

Problem	Solutions
Will not power on	Front cover is not installed correctly in place. Remove door, replace, and try again. Try a different outlet
Sounds noisy or makes abnormal sounds	Make sure the air purifier is on the ground on a flat level surface. Filter is clogged and needs to be changed Air inlet or outlet is obstructed. Please check and try again.
Unit is on with no lights	Unit is in sleep mode. Press any button to exit.
Insufficient Air Flow	Filter is clogged and needs to be changed Air inlet or outlet is obstructed. Please check and try again.

## Warranty

### 1 Year Warranty

InvisiClean warrants this product to be free of defects in materials or workmanship commencing upon the date of the original purchase. Save your original sales receipt to validate start of warranty period. Warranty is not valid without receipt. If this product should become defective within the warranty period, we will repair or replace any defective parts free of charge. All warranty repairs must be completed by InvisiClean. This warranty does not cover unauthorized repairs. The warranty does not include unusual wear, damage resulting from accident, or unreasonable use of the product. This warranty only covers the product when used with genuine InvisiClean accessories. This warranty covers product that was purchased from authorized distributors. This warranty gives you specific legal rights and you may also have other rights (other rights may vary from state to state in the U.S.A.). To submit product under warranty the complete machine must be delivered pre-paid to InvisiClean. Please include complete information including: the problem, the model number of the product, the day of purchase, and a copy of the original sales receipt along with your name, address, and telephone (email optional). Please contact the original authorized retailer for return authorization and instructions.



**Need a reminder to change filters?**  
Subscribe and Save 20% on  
Filters and get FREE SHIPPING



Go to: **[invisiclean.com/save](https://invisiclean.com/save)**  
No commitments or hassles  
and cancel online anytime.

## Specification

Input voltage: AC120V/60Hz

Rated power: 55W

CFM: 200CFM

Negative ion density:  $\geq 3000000/\text{cm}^3$

Unit weight: 15.2 lbs

Product size: 14.7 x 8.5 x 23.4 inches