



HyperX Cloud Alpha Wireless



Part Numbers

4P5D4AA

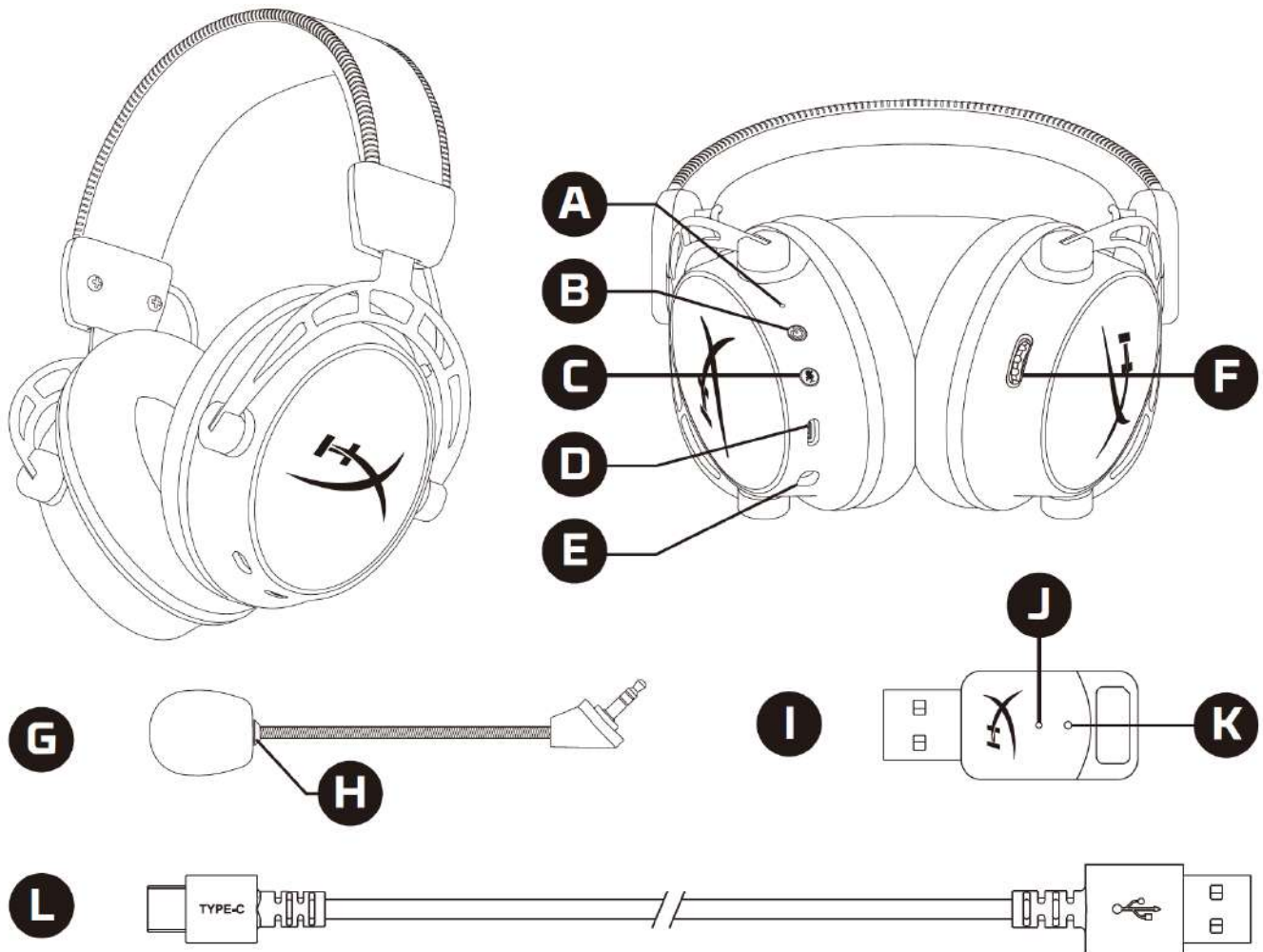


TABLE OF CONTENTS

Overview	3
Specifications	4
Setting up with PC.....	6
Setting up with PlayStation 4	9
Setting up with PlayStation 5	10
Controls	12
Status LED.....	12
Power button.....	12
Mic mute / mic monitoring button	12
Volume wheel.....	13
Voice Prompt Notifications.....	13
Tone Notifications	14
Charging the Headset	15
Wired charging.....	15
HyperX NGENUITY Software	15
Manually Pairing the Headset and USB Adapter	16



Overview



- | | |
|-------------------------------------|------------------------------|
| A. Status LED | G. Detachable microphone |
| B. Power button | H. Microphone mute LED |
| C. Mic mute / mic monitoring button | I. USB adapter |
| D. USB-C charge port | J. Wireless status LED |
| E. Microphone port | K. Wireless pairing pin hole |
| F. Volume wheel | L. USB charge cable |

Specifications

Headphone

Driver: Dynamic, 50mm with neodymium magnets

Form factor: Over ear, circumaural, closed back

Frequency response: 15 Hz – 21 kHz

Impedance: 62 Ω

Sensitivity: 103 dB SPL/mW at 1 kHz

T.H.D.: $\leq 2\%$

Frame type: Aluminum

Ear cushions: Memory foam and premium leatherette

Microphone

Element: Electret condenser microphone

Polar pattern: Bi-directional, Noise-cancelling

Frequency response: 50 Hz – 7.2 kHz

Sensitivity: -15 dBFS/Pa at 1 kHz

Connections and Features

Audio connection: Wireless USB

USB audio format: Stereo

USB specification: USB 2.0

Sampling rates: 48 kHz

Bit-Depth: 24 bit

Included virtual surround sound: DTS Headphone:X

Audio controls: Onboard audio controls

Battery

Type: Rechargeable lithium-polymer

Battery life: up to 300 hours*

Charge time: 4.5 hours



Wireless

Type: 2.4 GHz

Wireless range: Up to 20 meters**

Physical

Weight: 322g

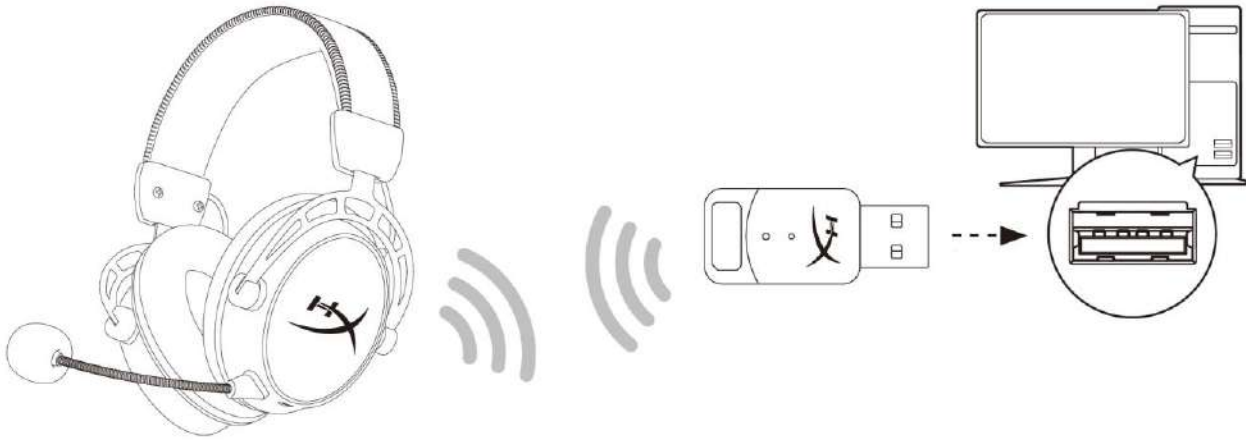
Weight with microphone: 335g

Cable length(s) and type(s): 0.5m USB charge cable

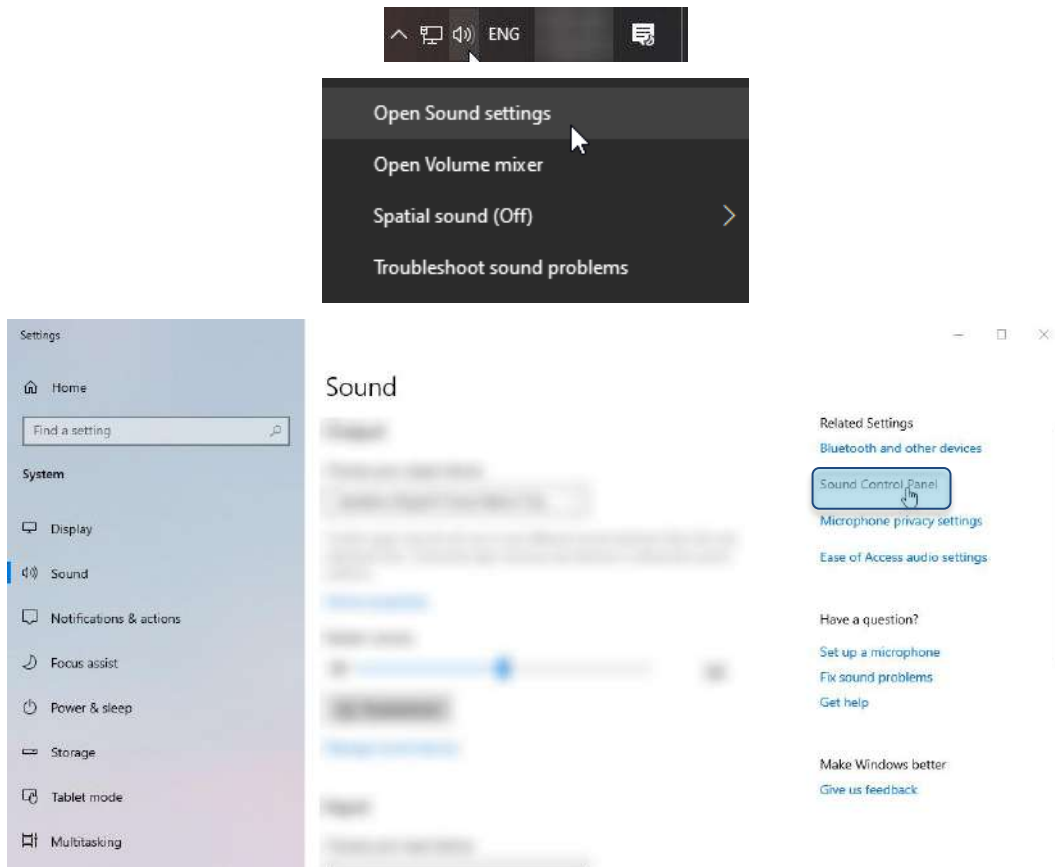
*Tested at 50% headphone volume. Battery life varies depending upon the usage.

**Wireless range may vary due to environmental conditions.

Setting up with PC

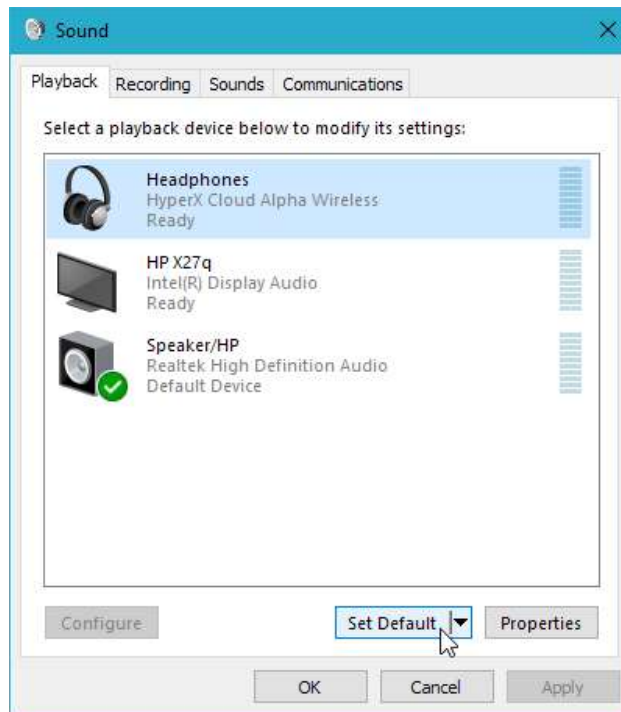


1. Connect the wireless USB adapter to the PC.
2. Power on the headset.
3. Right click *speaker icon* > Select *Open Sound settings* > Select *Sound Control Panel*

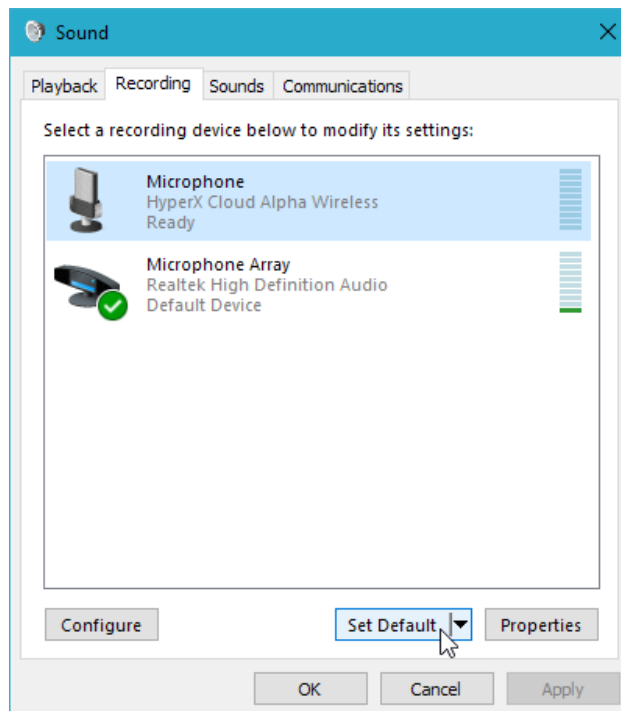




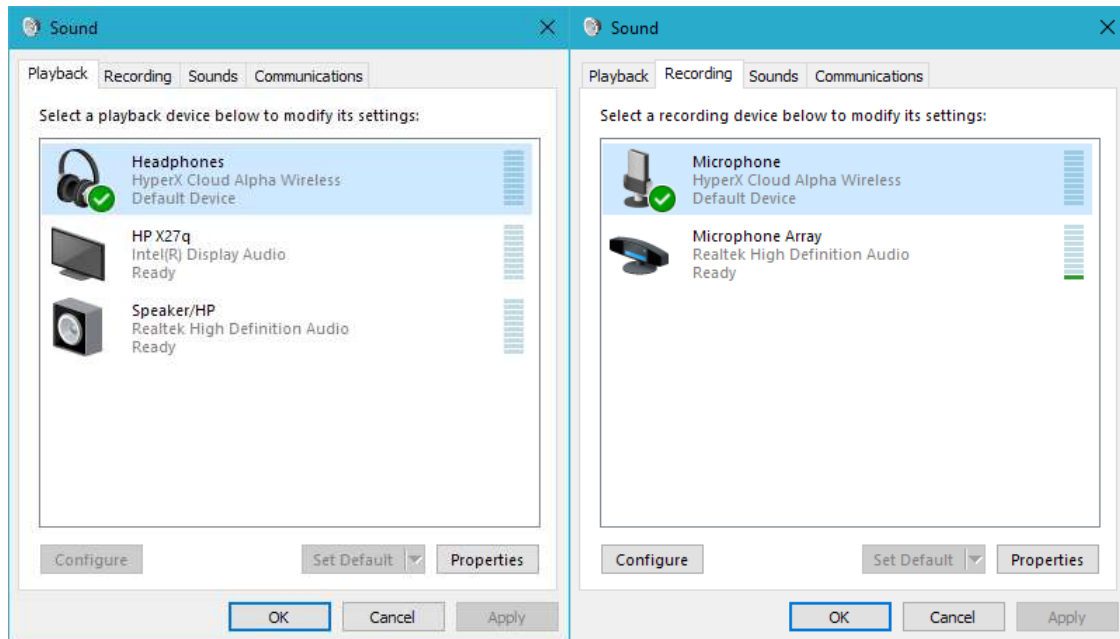
4. Under the *Playback* tab, click on **“HyperX Cloud Alpha Wireless”** and click on the *Set Default* button.



5. Under the *Recording* tab, click on **“HyperX Cloud Alpha Wireless”** and click on the *Set Default* button.



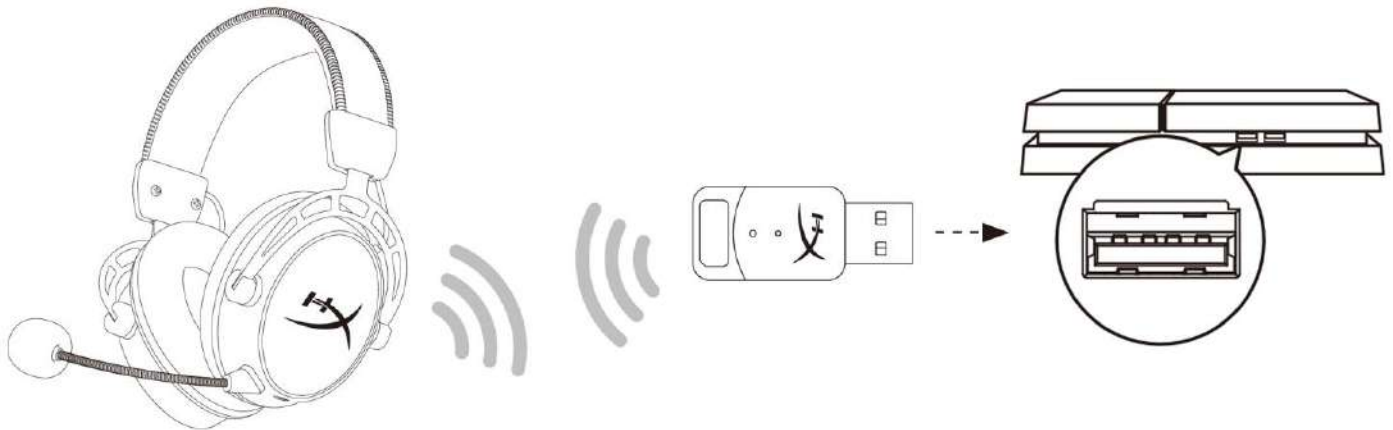
6. Under the *Playback* tab, verify that “**HyperX Cloud Alpha Wireless**” is set as *Default Device* and *Default Communication Device*. Under the *Recording* tab, verify that “**HyperX Cloud Alpha Wireless**” is set as *Default Device*.



7. To set up DTS Headphone:X, please download the HyperX NGENUITY software at hyperxgaming.com/ngenuity and follow the instructions in the app to install the required drivers. DTS Spatial Audio is controlled within NGENUITY software.



Setting up with PlayStation 4



1. Connect the wireless USB adapter to the PlayStation 4 console.
2. Set *Input Device* to **USB Headset (HyperX Cloud Alpha Wireless)**
3. Set *Output Device* to **USB Headset (HyperX Cloud Alpha Wireless)**
4. Set *Output to Headphones* to **All Audio**
5. Set *Volume Control (Headphones)* to maximum.

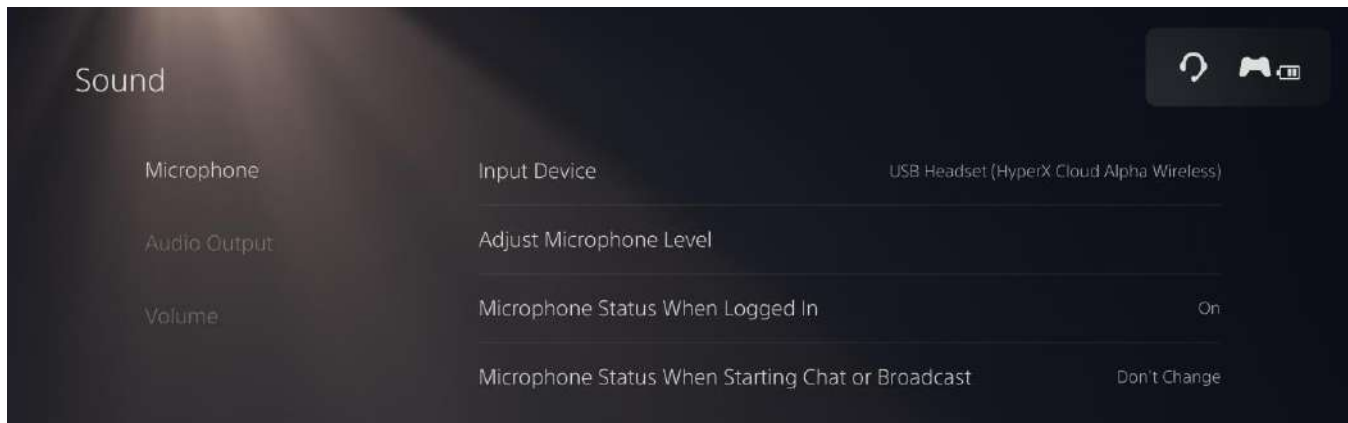
Audio Devices

	Input Device	USB Headset (HyperX Cloud Alpha Wireless)
	Output Device	USB Headset (HyperX Cloud Alpha Wireless)
	Adjust Microphone Level	
	Volume Control (Headphones)	
	Output to Headphones	All Audio
	Switch Output Device Automatically	<input checked="" type="checkbox"/>

Setting up with PlayStation 5



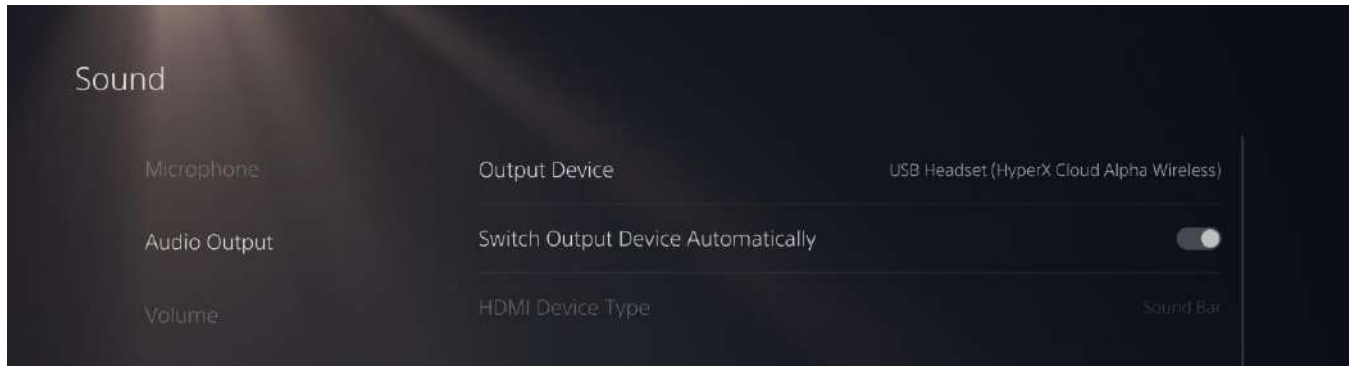
1. Connect the wireless USB adapter to the PlayStation 5 console.
2. Go to the home page and select Settings > Sound
3. Under *Microphone*, set the following:
 - Input Device to **USB Headset (HyperX Cloud Alpha Wireless)**



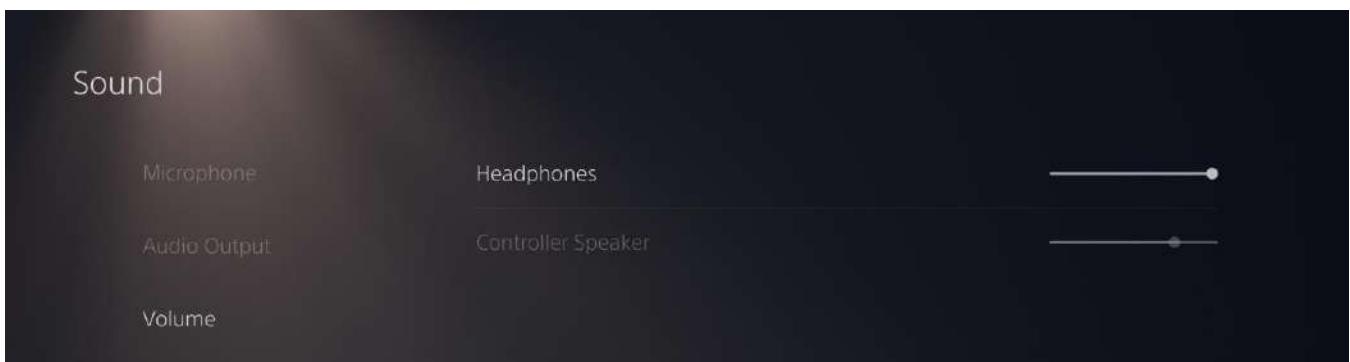


4. Under *Audio Output*, set the following:

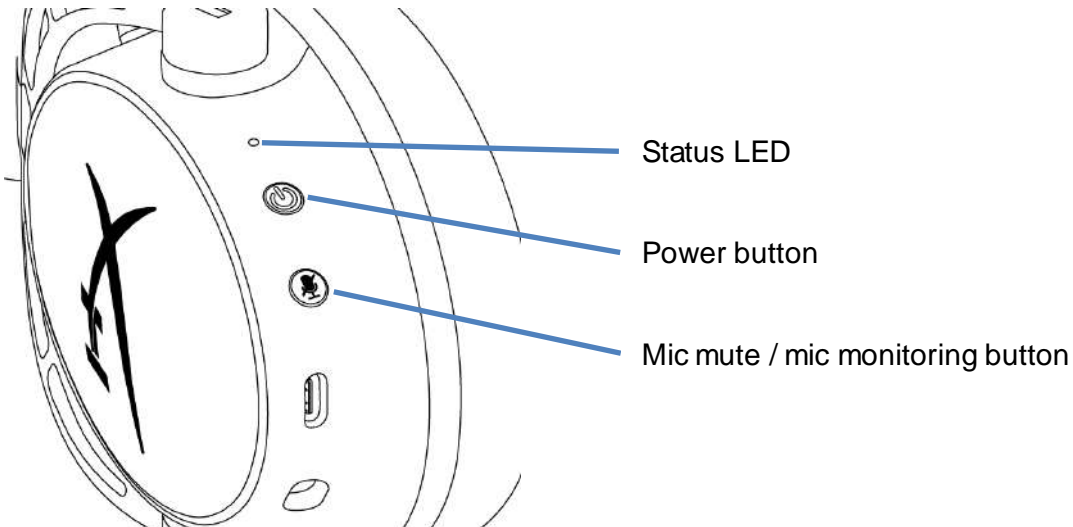
- Output Device: **USB Headset (HyperX Cloud Alpha Wireless)**
- Output to Headphones: **All Audio**



5. Under *Volume*, set Headphones slider to maximum level.



Controls



Status LED

Status	Battery Level	LED
Searching	-	Slow breathing green
Connected*	90% - 100%	Solid green for 5s
	10% - 90%	Blinking green for 10s
	< 10%	Blinking red for 10s

*Battery level indication

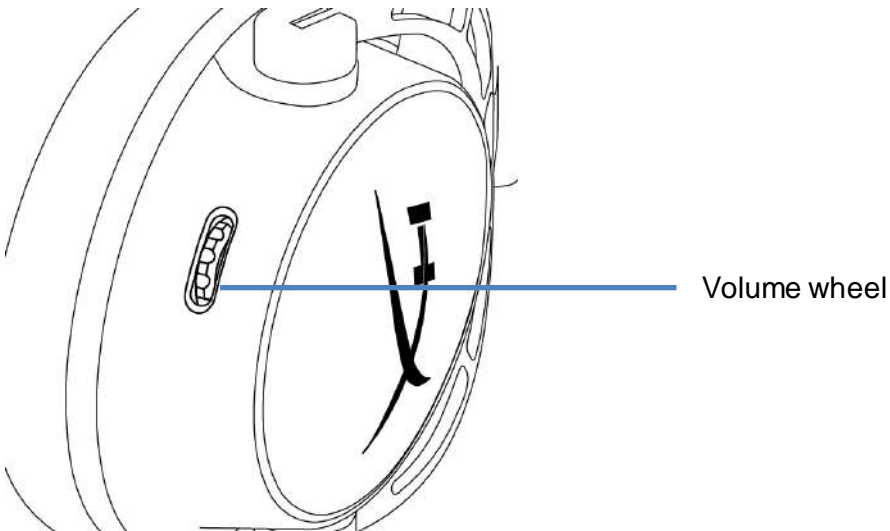
*The status LED will automatically turn off to conserve battery life

Power button

- Hold for 3 seconds to power headset on/off
- Press to hear battery level voice prompt

Mic mute / mic monitoring button

- Press to toggle mic mute on/off
 - LED On – Mic muted
 - LED Off – Mic active
- Hold for 3 seconds to toggle mic monitoring on/off



Volume wheel

- Scroll up and down to adjust volume level

WARNING: Permanent hearing damage can occur if a headset is used at high volumes for extended periods of time

Voice Prompt Notifications

By default, the headset will emit voice prompts and tones to indicate the current headset status or behavior. See table below for details:

Headset status	Notification
Power On	"Power On", "Battery level is ##%"
Power Off	"Power Off"
Connected to wireless USB adapter	"Connected"
Disconnected from wireless USB adapter	"Disconnected"
Battery level check	"Battery level is ##%"
Maximum volume reached	3 tones (high)
Minimum volume reached	3 tones (low)
Low battery (15%)	4 tones (mid, low, mid, low)
Microphone muted	2 tones (high, high)
Microphone active	1 tone (high)
Mic monitoring on/off	2 tones (mid, mid)



Tone Notifications

In NGENUITY software, the headset voice prompt notifications can be disabled. When disabled, the headset will emit tones to indicate the current headset status or behavior. See table below for details:

Headset status	Tone Notification
Power On	1 tone (high)
Power Off	2 tones (high, low)
Maximum volume reached	3 tones (high)
Minimum volume reached	3 tones (low)
Low battery (15%)	4 tones (mid, low, mid, low)
Microphone muted	2 tones (high, high)
Microphone active	1 tone (high)
Mic monitoring on/off	2 tones (mid, mid)

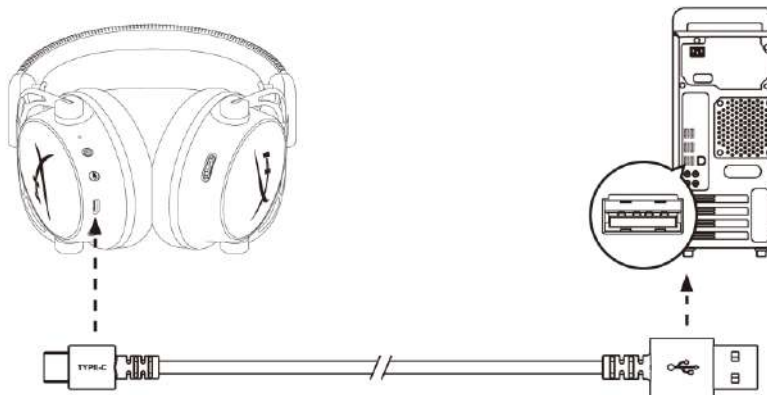
Charging the Headset

It is recommended to fully charge your headset before first use.

When charging the headset, the headset status LED will indicate the current charge status.

Status LED	Charge Status
Solid green	Fully charged
Breathing green	10% - 99% battery level
Breathing red	< 10% battery level

Wired charging



To charge the headset via wired, plug the headset to a USB port with the USB charge cable.

HyperX NGENUITY Software

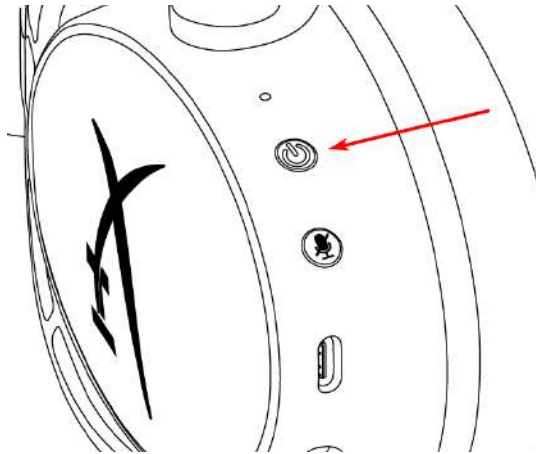
Go to hyperxgaming.com/ngenuity to download the NGENUITY software. Software features include:

- DTS Headphone:X
- Adjustable EQ settings
- Adjustable auto shut-off behavior
- Battery level indicator

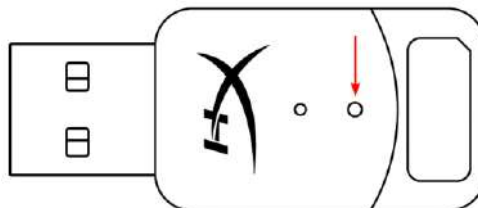
Manually Pairing the Headset and USB Adapter

The headset and USB adapter are automatically paired together out of the box. But if manual pairing is needed, follow the steps below to pair the headset and USB adapter.

1. While the headset is powered off, hold down the power button until the headset status LED starts blinking red/green rapidly. The headset is now in pairing mode.



2. While the USB adapter is plugged in, use a small tool (e.g. paper clip, SIM tray ejector, etc.) to hold down the button inside the pin hole until the USB adapter LED starts blinking rapidly. The USB adapter is now in pairing mode.



3. Wait until both the headset LED and the USB adapter LED are solid.

The headset and USB adapter are now paired together.

Questions or Setup Issues?

Contact the HyperX support team at: hyperxgaming.com/support/