

ERV SCREEN CONTROLLER ERV-SC-2



WARNING

WARNING — THE INSTALLATION MUST BE CARRIED OUT BY A QUALIFIED ELECTRICIAN.

- Before connecting wires, unplug the unit or switch power off at service panel
- Always wear safety glasses and gloves while performing these instructions
- Wiring must be done in accordance to applicable codes and standards

CAUTION

FAILURE TO COMPLY WITH THE FOLLOWING CAN CAUSE ERRATIC OPERATION OF THE CONTROL AND/OR UNIT

- Never install more than one main wall control per ventilation unit
- Keep control low voltage wiring at least 1 feet (305mm) away from motors, lighting balast, light dimming circuit and power distribution panel
- Do not route control wiring alongside house power wiring. Ensure the wires are securely connected
- Use normal copper wire or low voltage wire to connect the unit with the controller, 30M length maximum or use a shielded wire, 10M ideal

HARDWARE CONTENTS



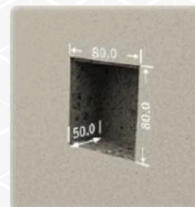
Screen Controller
x 1



Bracket
x 1

INSTALLATION

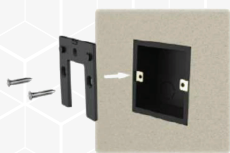
1. The opening requirements are shown in **STEP 1**. Depth ≤ 50 mm. The size of the wall opening should be slightly larger than that of pre-embedded concealed box.
2. Install the embedded concealed box at the opening on the wall.
3. Fix the wire controller to the concealed junction box by screws.
4. Wire controller bracket is fixed to the concealed junction box.
5. Align the product positioning holes with the wire controller bracket snap and push the product downward to secure the product fixed to the bracket.
6. Installation complete.



STEP 1



STEP 2



STEP 3



STEP 4



STEP 5



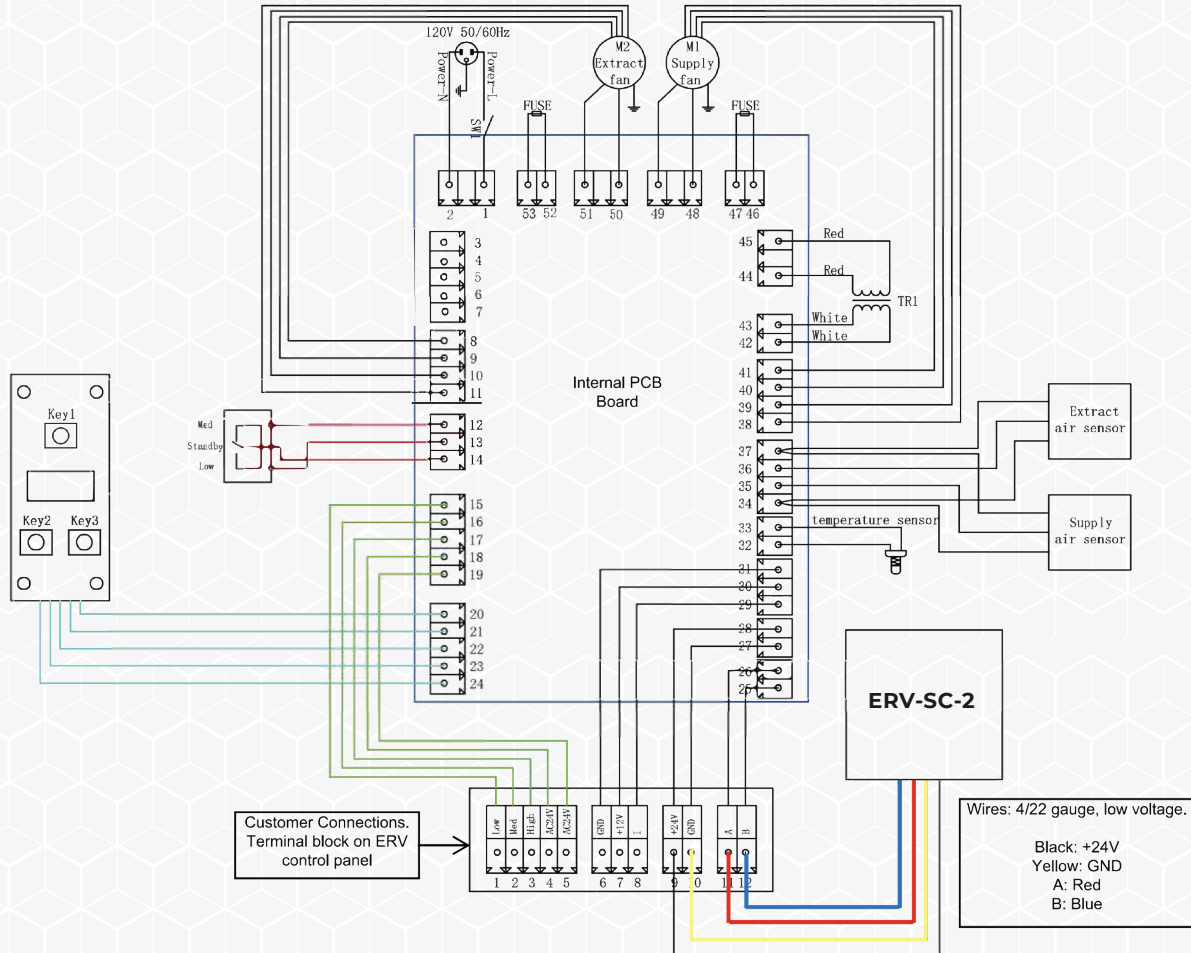
STEP 6

ORTECH reserves the right to modify at any time, without notice, any or all of our product's features, designs, components and specifications to meet market changes.



ERV SCREEN CONTROLLER ERV-SC-2

WIRING DIAGRAM



ORTECH reserves the right to modify at any time, without notice, any or all of our product's features, designs, components and specifications to meet market changes.