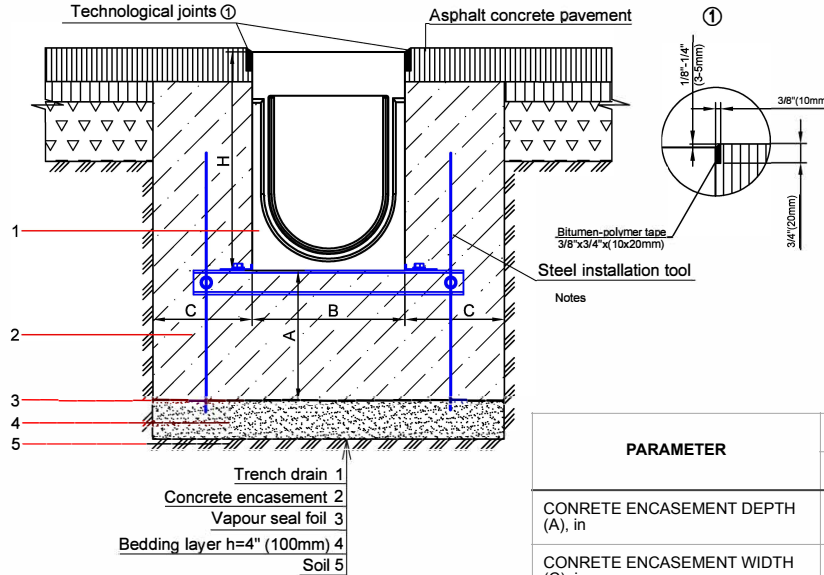


MONO 100 (SPORT) SYSTEM - LOAD CLASS C250

EXPOSED ASPHALT PAVEMENT INSTALLATION

4" (100mm) MONO POLYMER CONCRETE TRENCH DRAIN



PARAMETER	LOAD CLASS		
	CLASS A	CLASS B	CLASS C
CONCRETE ENCASEMENT DEPTH (A), in	4" (100mm)	4" (100mm)	6" (150mm)
CONCRETE ENCASEMENT WIDTH (C), in	4" (100mm)	4" (100mm)	6" (150mm)

NOTES:

- SPECIFIER IS RESPONSIBLE FOR CONCRETE ENCASEMENT AND REINFORCING BASED UPON APPLICATION AND LOCAL CODES.
- EXPANSION AND CONTRACTION CONTROL JOINTS AND REINFORCEMENT ARE RECOMMENDED TO PROTECT CHANNEL AND CONCRETE SURROUND. ENGINEERING ADVICE MAY BE REQUIRED.
- THIS INSTALLATION SCHEME IS A RECOMMENDATION. CONSULT WITH THE MANUFACTURER FOR INSTALLATION INSTRUCTIONS.
- IF TRENCH DRAIN SYSTEM HAS A VERTICAL OUTLET AT THE END OF THE RUN, IT IS NECESSARY TO ADD AN ADDITIONAL 4" (100mm) OF CONCRETE ENCASEMENT AFTER THE END CAP.
- THE FINISHED LEVEL OF CONCRETE SURROUND SHOULD BE 1/8" - 3/16" (3-5mm) ABOVE THE TOP OF THE CHANNEL EDGE.

GENERAL: THE TRENCH DRAIN SHALL BE VODALAND CANADA MONO 100 (SPORT) AS MANUFACTURED BY VODALAND OR APPROVED EQUAL.

SPECIFICATION: CHANNELS SHALL BE 39.4" (1000MM) LONG AND THE NOMINAL CLEAR OPENING SHALL BE 4" (100MM) WITH 5.5" (140MM) OVERALL WIDTH AND BUILT IN NEUTRAL SLOPE AS PER SPECIFIER'S REQUIREMENTS. EACH UNIT WILL FEATURE A FULL RADIUS IN THE TRENCH BOTTOM AND FEATURE MALE-TO-FEMALE INTERLOCKING JOINTS. GRATE OPENING SHALL BE MONOLITHICALLY CAST AS A PART OF THE TRENCH DRAIN BODY AS A SINGLE PIECE. CHANNELS AND GRATE SHALL WITHSTAND A REQUIRED EN1433 LOAD CLASS.

MATERIALS: MONO 100 (SPORT) TRENCH DRAIN SHALL BE MANUFACTURED FROM POLYMER CONCRETE WITH THE FOLLOWING APPROXIMATE PROPERTIES:

COMPRESSIVE STRENGTH	14,000 PSI
FLEXURAL STRENGTH	4,000 PSI
TENSILE STRENGTH	1,500 PSI
WATER ABSORPTION	0.05%
FROST PROOF	YES
DILUTE ACID AND ALKALI RESISTANT	YES
SALT PROOF	YES

THE COMPLETE DRAINAGE SYSTEM SHALL BE BY VODALAND CANADA INC. ANY DEVIATION OR PARTIAL SYSTEM DESIGN AND/OR IMPROPER INSTALLATION WILL VOID ANY AND ALL WARRANTIES PROVIDED BY VODALAND CANADA INC.

REVISED: 2024

Vodaland Canada Inc.

1-5900 Ambler Dr, Mississauga, ON L4W 2N3 • Phone: 905-238-1771 • Email: info@vodaland.ca

MONO 100 (SPORT) SYSTEM - LOAD CLASS C250

EXPOSED ASPHALT PAVEMENT INSTALLATION

4" (100mm) MONO POLYMER CONCRETE TRENCH DRAIN**CHECK AND SPECIFY APPROPRIATE OPTIONS:**

	Name	Article	H, in	H, mm
	4" MONO polymer concrete endcap H7.9" (end)	67019-5K	7.9	200
	4" MONO polymer concrete endcap H7.9" (beginning)	67019-5N	7.9	200

REVISED: 2024