

CM9-535 WIRELESS KEYPAD (1 PIN CODE)

Factory Reset The Keypad To Default Password “0000” (FIGURE A)

To reset your PIN to default “0000”, you need to use the provided keys to open the keypad. Press and hold the black button until long beep end, then release (FIG.A - STEP 1). To test, press “0000” and the “*” key, If you hear a long beep (3 sec) it means you reset successful (FIG. A - STEP 2).

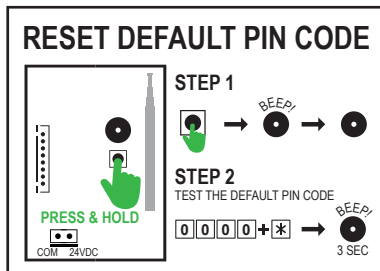


FIGURE A

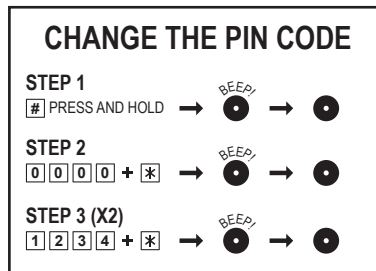


FIGURE B

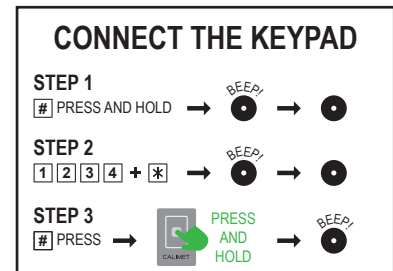


FIGURE C

Change The PIN Code (FIGURE B)

1. Default PIN is “0000”, press “0000” and press “*” to test if the password is set as default. If yes move to step 2. If no, follow the **“Factory Reset The Keypad To Default Password”** above.
2. To change the PIN number, you need to press and hold the “#” key until you hear a long beep, wait until beep sound end (FIG. B - STEP 1). Press “0000” and “*” then wait for beep sound end (FIG. B - STEP 2). Press your new PIN from 4 digits to 8 digits (for example “1234” or “12345678”) and press “*” and wait for beep sound end. Repeat the new PIN one more time (FIG. B - STEP 3). Now your new PIN number is updated.

Connect The Keypad To The Gate Operator (FIGURE C)

1. Press and hold the “#” key until you hear a long beep, wait until beep sound end (FIG. C - STEP 1).
2. Press “1234” (your new PIN number) and “*”, wait until beep sound end (FIG. C - STEP 2)
3. Press “#” then press and hold the remote control (FIG.C - STEP 3), you should here a long beep if succeeded.

Power Wire Connection Diagram:

