

**Installation, Operation
& Maintenance Manual
Crystal Pro V2 Water Dispenser**



Notes

Table of Contents

Table of Contents.....	3
Notices and Safety Information.....	4
Features and Benefits.....	5
Exploded Views and Parts List.....	7
Installation.....	10
Operating Crystal Pro Water Dispenser.....	14
Service and Maintenance.....	15
General Maintenance.....	15
Sanitizing Reservoirs.....	15
Draining Reservoirs.....	16
Resetting Leak Detection System.....	18
Troubleshooting.....	19
Technical Specifications.....	20
Flow Diagram.....	21
Electrical Diagram.....	22
Warranty.....	23

Notices and Safety Information

Throughout this manual there are paragraphs set off by special headings.

“Notice” is used to emphasize installation, operation or maintenance information which is important, but may not present a hazard to persons or property.

“Caution” is used when failure to follow directions could result in damage to equipment or property.

“Warning” is used to indicate a hazard which could cause injury or death if ignored.

The **“Caution”** and **“Warning”** paragraphs are not meant to cover all possible conditions and situations that may occur. It must be understood that common sense, caution, and careful attention are conditions which cannot be built into the equipment.

To ensure proper and efficient operation of the Crystal Pro Water Dispenser to your full satisfaction, carefully follow the instructions in this manual.

Do not use with water that is microbiologically unsafe or of unknown quality without adequate disinfection before the system.

Check and follow the applicable plumbing codes and ordinances when installing this equipment. Local codes may prohibit the discharge of acidic or caustic solutions to drain. An extra solution tank may be required to neutralize the solution before discharging to drain. Follow local codes if they differ from this manual.

This dispenser has a maximum pressure rating of 80 psi (5.5 bar). A pressure regulator must be used for all installations. This will help prevent internal structural damage to the unit and potential water leaks. The pressure regulator should be installed on the water supply before the inlet connection.

Failure to use an appropriate anti-flood device for any reason will not obligate or make Crystal Mountain responsible in any way for Product Liability issues relating to any claims, including water damage claims.

Regularly inspect the filters, filter housings and the plumbing fittings and connections for water leaks. Water leaks may cause damage to your office or facility and are not the responsibility of the manufacturer.

Only connect the power cord to a properly grounded outlet. NOTE: To provide additional protection from the risk of shock, this unit MUST be connected to a ground fault circuit interrupter (GFCI) outlet at all times. Use of an extension cord will void any warranties.

Keep the power cord out of heavy traffic areas. To avoid a fire hazard, never put the power cord under rugs, near radiators, stoves or heaters.

Do not use a damaged power cord or plug. If the power cord is damaged, a qualified service technician must replace it.

This dispenser is not intended for use by persons (including children) with reduced physical, sensory or mental capabilities, or lack of experience and knowledge, unless they have been given supervision or instruction concerning use of the dispenser by a person responsible for their safety. Children should be supervised to ensure that they do not play with the dispenser.

This product should not be disposed with other household wastes. To prevent possible harm to the environment or human health from uncontrolled waste disposal, recycle it responsibly to promote the sustainable reuse of material resources. To recycle your used dispenser, contact your local recycler or waste collector for the proper procedures.



Please Dispose of Properly

Features & Benefits

Thank you for purchasing the Crystal Mountain Crystal Pro Water Dispenser. The Crystal Pro brings a fresh approach and a new look to point-of-use water dispensers. The system's contemporary color scheme complements every office environment. There are no bottles to change and the supply is virtually unlimited.

Hot, Cold & Ambient Dispenser

Your Crystal Pro Water Dispenser will provide up to 0.3 gallons (1.2 L) of hot water from a stainless steel reservoir using a 450 watt heating element. A bi-metal limiter is provided to prevent overheating and can be manually reset. The hot water is factory pre-set to 181°F (83 °C). Cold water is chilled with a high capacity compressor using R134 refrigerant. An electro-mechanical thermostat controls the temperature of the water in the one gallon (3.8 L) stainless steel reservoir. The cold water temperature is factory preset to a nominal 41°F (5 °C)

UV Light System

All models of the Crystal Pro dispensers are fitted with a UV-C band light system at the point of dispensing and built into the ambient reservoir lid. This system is used to inhibit the growth of bacteria.

Leak Detection System

All models of the Crystal Pro are fitted with a leak detector. This system will generate an audible alarm and front panel light alert upon detecting water in the base of the unit. In addition, the system will automatically shut off the incoming water supply to prevent further damage.

Filtration System (not included)

Crystal Pro dispensers are designed to be used with reverse osmosis, or carbon filtration. For locations where a drain is not present, a filtration-only option is recommended.

Internal Storage Reservoir

An internal storage reservoir eliminates the need for an external storage tank. The internal compartment is large enough to contain most water treatment systems. A float mechanism guards against over-flows.

Mechanical Components

All water connection fittings are compliant with NSF Standard 61. The Crystal Pro connects to the water supply using a 1/4" female bulkhead fitting. The molded panels are made from recyclable ABS plastic.

Features & Benefits

CR	S	P	3	K	H	K	1	C
Description	Reservoir	Type of lid	No. of Faucets	Body color	Temp. Options	Lid color	Voltage	Any 1-2 Alpha-numeric Characters
Crystal Pro	S = Stainless Steel Reservoir	P = POU	3 = 3	K=Black	H=Hot, Cold & Ambient	K =Black	1 = 110v-115v	C= Made in China

The Crystal Pro Water Dispensers come completely assembled and ready for set up and operation either with, or without, installation of reverse osmosis or filtration cartridges.

Remove the dispenser from the box, saving the box and the packaging materials. The carton contains the following items:

Qty	Item
1	Crystal Pro Water Dispenser
1	M4 X 30 Tamper-proof Screw
1	M6 X 60 Expansion Bolt (220V units only – for CE compliance)
1	User Manual

Inspect the exterior for any damage which may have occurred during shipment.

- 1) To inspect the interior, remove the filtration service panel.
- 2) Visually inspect for any wires, tubing, or fittings which may have come loose during shipment.
- 3) Record the model and serial numbers below for future reference.

Record your Crystal Pro model number here: _____

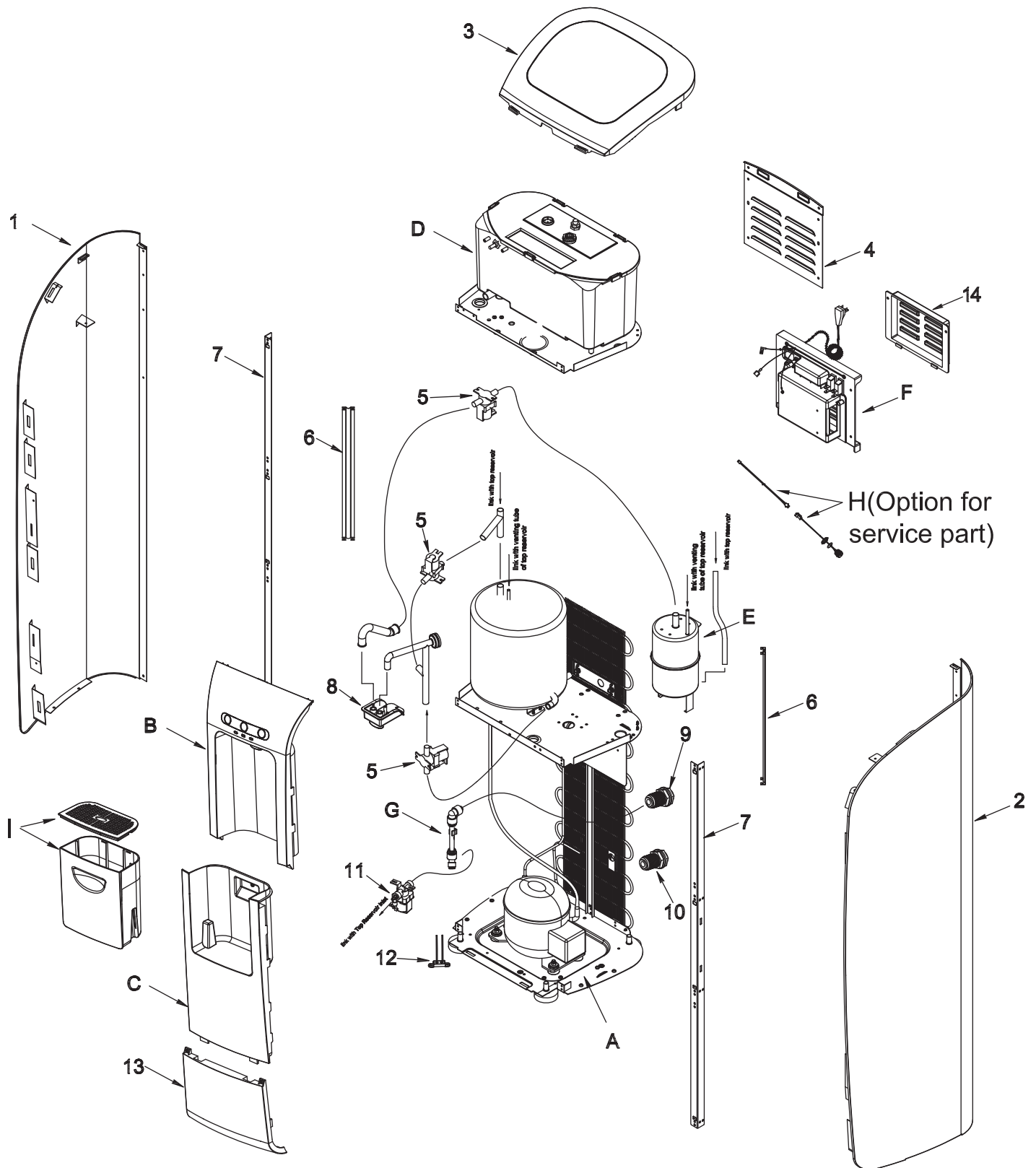
Serial Number: _____

Date purchased: _____

Date installed: _____

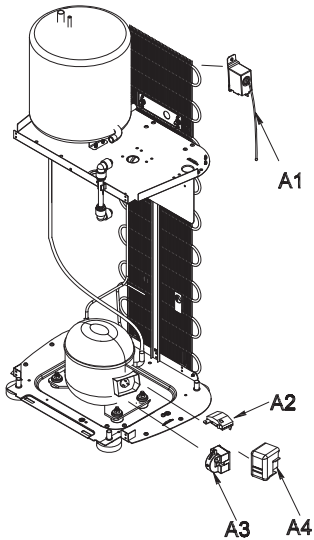
Products offered and marketed by Crystal Mountain and its affiliates are protected by patents is-

Parts Diagram

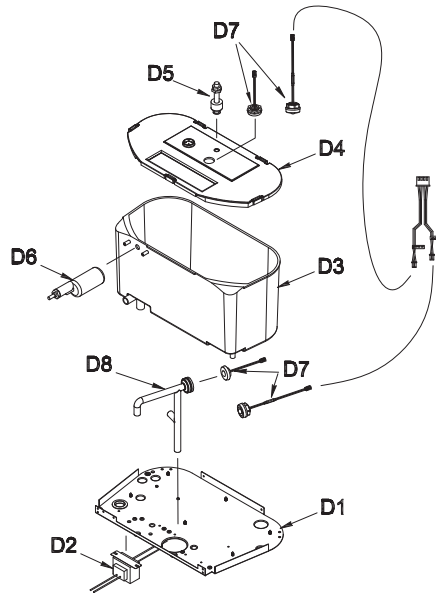


Parts Diagram Detail

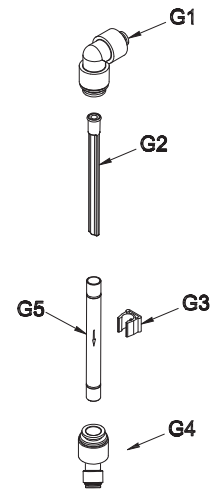
A Refrigeration System



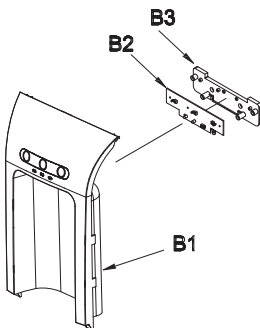
D Top Shelf + Top Reservoir Assembly



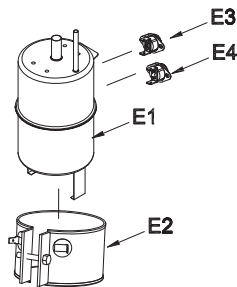
G 3/8in Push Fit Connector Assembly



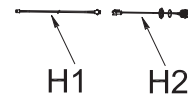
B Upper Front Panel Assembly



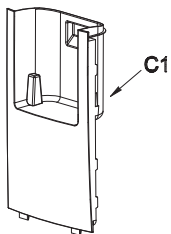
E Hot Tank Assembly



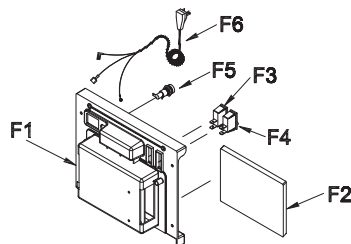
H Foot Pedal Assembly
Not provide the foot pedal
(Option for service part)



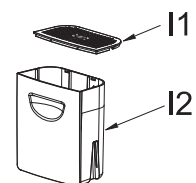
C Middle Front Panel Assembly



F PCBA +PCBA BOX Assembly



I Deeper Drip Tray assm, V2, Black - CP



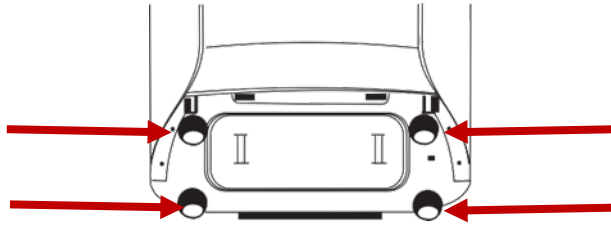
Parts Listing

NO.	DESCRIPTION		PART CODE	Replaced by Multipacks	Effective Date
1	Side Panel, Left, Black - CP		SMT-C400002		
2	Side Panel, Right, Black - CP		SMT-C400003		
3	Top Cover, Black, CM Logo - CP		PLC-C400030		
	Top Cover, Black, Juturna Logo - CP		PLC-C400035		
4	Cover, Back - CP		SMT-C400005		
5	Low Pressure Solenoid Valve (DC24v)		POU-C400001		
6	Support Bracket, Rear, Upper - CP		SMT-C400008		
7	Support Bracket, Front - CP		SMT-C400007		
8	Water Outlet, Black - CP		PLC-C400015		
9	Bulkhead Fitting JG 1/4 by 1/4 PP1208W		POU-C400012		
10	Pushfit Connector, Bulkhead, 1/4in, PP - PH		POU-C400003		
11	24V Solenoid, HP, 1/4 Push Fit - RSC-2		POU-C100121		
12	Leak Detection Assy - CrystalPro		SUB-C400014		
13	Lower Front Panel, Black - CP		PLC-C400033		
14	Cover, PCB Box, Black - CP		PLC-C400018		
A	115V Refrigeration System Replacement Parts		/		
	A1	Thermostat for Cooling(cold control)	REF-C400004		
	A2	115V Danfu compressor protector-PW2.0DVMMF	REF-C100395		
	A3	115V Danfu compressor relay, PW2.5DV	REF-C100229	SUB-C100496	1-Apr-24
	A4	115V Danfu compressor cover PW2.5DV	REF-C100301		
B	CP Upper Front Panel Assm, V2, Black - spare part		SUB-C400052		
	B1	Upper Front Panel, Black - CP	PLC-C400036		
	B2	PCB, Push Button Module (LT) - CP	ELE-C100417		
	B3	Bracket, Push Button, Black - CP	PLC-C400014		
C	Middle Front Panel Assm, V2, Black - CP - Sparepart		SUB-C400054		
	C1	Middle Front Panel, Black - CP	PLC-C400037		
D	Top Shelf + Top Reservoir Assm + Outlet Assm		SUB-C400038 (with Philips UVC LED)		
	D1	Top Shelf - CP	SMT-C400013		
	D2	Transformer 120V/18V/1A	ELE-C400033		
	D3	3G Ambient Reservoir - CP	PLC-C400001		
	D4	Cover, Ambient Reservoir - CP	PLC-C400002		
	D5	Electric Ball float valve	ELE-C400026		
	D6	Mechanical Float Valve	POU-C400005		
	D7	UVC LED Module, Philips, 0.8W, 12-24VDC	ELE-C100401		
		UVC LED assembly,CST-W17,Raysr	SUB-C400050 (Alternate)		
E	SS Water Outlet, UV - CP		SMT-C100235		
	115V Hot Tank + Insulation Assembly,Spare Part- CP		SUB-C200588		
	E1	SS Hot Tank, CrystalPro	SMT-C400019		
	E2	Ex Heater + Ins, 115V, 450W - K2	ELE-C100298		
	E3	98C CERAMIC MANUAL RESET	ELE-C100170	SUB-C100463	1-Apr-24
F	83C CERAMIC AUTO RESET		ELE-C100109	SUB-C100460	1-Apr-24
	115V PCB Assembly (UV LED) - CP		SUB-C400037		
	F1	PCB Box, Black - CP	PLC-C400017		
	F2	Main PCBA (LT), UVC, 100-240V - CP	ELE-C100416		
	F3	Power Switch, SPST, Green	ELE-C400007		
	F4	Power Switch, SPST, Red	ELE-C400006		
	F5	Fuse 250V 10A UL	ELE-C400032		
	F6	Power Cord, Black, 115V - CrystalPro	ELE-C400029		
	Inline Screen Filter Assembly		/		
	G1	DM Elbow, 1/4 x 3/8 IN (AEU0604),Gray	POU-C100071		
G	G2	In-Line Screen Filter, 3/8in (70 Mesh)	POU-C100063		
	G3	Plastic "C" Clip, 8mm	MIS-C100222		
	G4	JG 3/8x1/4 Straight	POU-C100026		
	G5	SS Tube, OD9.5 x L95mm	SMT-C100220		
I	Deeper Drip Tray assm, V2, Black - CP - Spare part		SUB-C400056		
	I1	Drip Tray, V2 Black - CP	PLC-C400038		
	I2	Drip Tray Cover, V2 Black - CP	PLC-C400039		
H	Foot Pedal Assembly - CrystalPro		SUB-C200819 (Option for service part)		
	H1	Wire Assm, PCB to Socket (Foot Pedal)	ELE-C100516		
	H2	Wire Assm, Foot Pedal Socket	ELE-C100517		

Installation

Position & Level

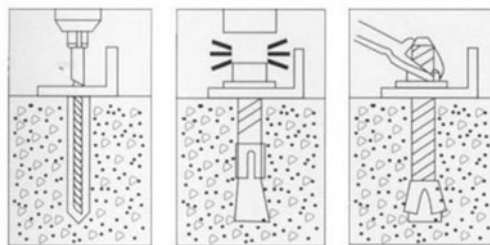
- 1) Locate the dispenser as close to the water supply and the electrical connections as possible.
- 2) Level the unit using the adjustable leveling feet and built-in level indicator.



- 3) Keep the dispenser at least 4 inches from the wall to ensure adequate airflow.

Warning: The dispenser should not be exposed to direct sunlight, heat sources, or an ambient air temperature above 100°F (38°C) or below 37°F (3°C) or structural damage may occur.

- 4) To meet CE standards (if applicable), it is necessary to fasten the unit to the floor with an M6x60 expansion bolt.
 - A. Locate and drill a 43 mm deep hole using an alloy drill bit with 9 mm diameter.
 - B. Install the flat pad, the spring washer and the nut to the bolt, and then insert into the hole.
 - C. Remove the filtration service panel and locate the alignment hole on the base plate.
 - D. Align the dispenser with the expansion bolt using the hole in the base plate.
 - E. Using a wrench, secure the unit to the expansion bolt.



- F. Reinstall the filtration service panel.
- 5) Your Crystal Pro Water Dispenser comes complete with a built-in cup holder under the water dispenser section. This holder is designed to hold up to twenty standard size cups with a diameter between 2.8" and 3.0" (71 – 76mm).

Installation

Make Water & Electrical Connections

- 1) The dispenser contains push-to-connect type fittings on the rear of the unit for the water supply and R/O drain. These fittings accept ¼" polypropylene plastic tubing. If copper tubing is to be used, these fittings must be replaced with a metal design. In addition, drain ports are provided for the hot and cold tanks.
- 2) Connect a potable, cold water supply to the unit. Pressure must be 40-80psi (2.8-5.5 bar) and at a temperature no more than 105°F (41°C).
- 3) Flush the water supply feed until it runs clear before making connection to the dispenser.

Caution:

Installation should only be executed by trained personnel. Check and follow the applicable plumbing codes and ordinances when installing this equipment. The connection must be to the potable mains water supply and should be via a shut off valve. An Appropriate anti-flood device should be fitted as close as possible to the mains connection point. In order to meet plumbing regulations, a backflow preventer may be required.

Failure to use an appropriate anti-flood device for any reason will not obligate or make Crystal Mountain responsible in any way for Product Liability issues relating to any claims, including water damage claims.

Do not connect the dispenser to a water line which exceeds 105°F (41°C) as structural damage may occur.

This water dispenser has a maximum pressure rating of 80 psi (5.5 bar). A pressure regulator must be used for all installations. This will prevent internal structural damage to the unit and potential water leaks. This should be installed on the water supply before the dispenser water inlet.

- 4) Plug the dispenser into the wall outlet and verify that the green power status indicator is "on." A fuse located on the rear service panel helps to protect the internal circuits from damage.

Caution:

Damage to the dispenser will result if hot and cold switches are turned on without water inside the tanks.

If the unit was placed on its side, it must stand upright for a minimum of twenty-four hours before operation to allow the compressor to stabilize.

Install Filtration (if applicable)

The Crystal Pro is shipped from the factory with no internal filtration installed.

Consult with your filter supplier on the best filtration solutions for the local water conditions and follow the manufacturer's instructions on their installation, use and servicing.

Flush Filters (if applicable)

All filters must be flushed prior to use per manufacturer's instructions. Depending upon your filtration or R/O system, this process may be combined with the initial sanitizing process. It is recommended to flush no less than two gallons through each filter. If using R/O, check to see if the filter manufacturer/supplier recommends soaking the R/O membrane (the R/O filter system is sold separately), prior to installation. Dispose of the first five gallons of product water.

Installation

Sanitize the Dispenser

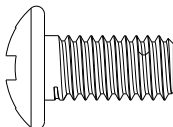
You must sanitize your system before using it for the first time. Failure to do so may result in poor water taste and water quality. This is best accomplished as outlined below.

- 1) Ensure both water connections – supply and R/O drain (if applicable) are made at the rear of the unit.
- 2) Open top service panel to gain access to the main storage tank.
- 3) Open the filtration service panel.
- 4) Place a sanitization cartridge (this can be an empty filter cartridge or one supplied by your filter supplier – not supplied with unit) inline before the water inlet of the unit.
- 5) Using a small eyedropper, prepare the sanitization cartridge by adding two teaspoons of unscented, liquid chlorine bleach.
- 6) Insert this cartridge inline prior to the system. If you have empty sanitization cartridges, install them in the filter positions. If you do not, remove your filtration system, then bypass it with a ¼" polyethylene tubing and two - ¼" union quick connect fittings. Refer to the service manual of the filtration system being used for proper sanitization of your filtration system.
- 7) Slowly turn on the water supply until the main storage tank is ½ full then turn off.
- 8) Carry out a visual inspection for any water leaks.
- 9) Lift the main storage tank lid taking care not to damage the float sensor or UV light.
- 10) Wearing sterile gloves, and using a clean, lint-free cloth thoroughly wipe down the inside of the main storage tank with the bleach solution.
- 11) Let stand for ten minutes or until completely dry.
- 12) Slowly turn on the water supply.
- 13) Depress the dispensing buttons (alternate between hot, ambient and cold spigots) to allow the solution to run through the spigots and associated lines.
- 14) Drain the system until the chlorine bleach is no longer detected at the spigot. Drain the remaining water through the drain connection at the rear of the unit.
- 15) Remove the sanitization cartridge and install the filter and/or R/O cartridges.

Note: Remember to connect the R/O drain line to the R/O cartridge. Ensure that the flow restrictor is visible inside the R/O drain line

Note: If R/O is being used, allow several hours to completely fill all tanks

The unit is supplied with a filter access door locking screw. This screw must be installed before the unit is put into service.



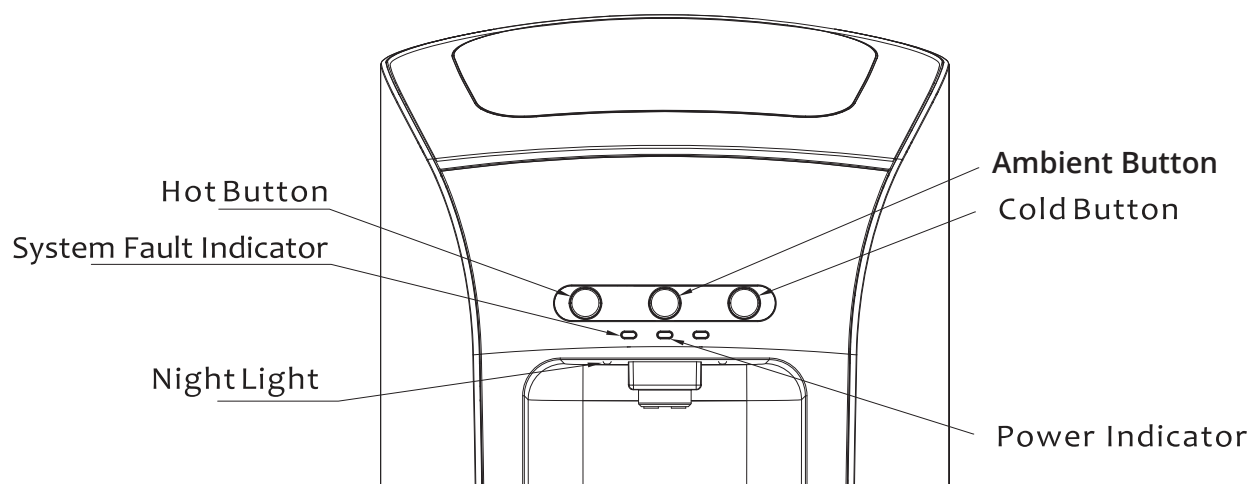
Installation

Turn on “Hot” & “Cold” Power Switches.

- 1) With all tanks completely filled with water, both the hot and cold switches at the rear of the dispenser should be turned “on.” It will take approximately twenty minutes for the hot water and two hours for the cold water to reach their temperature presets.
- 2) Record the service date on the inside filtration panel for future reference. This will ensure that maintenance intervals are recorded and scheduled.
- 3) Reinstall the filtration service panel.

Operating the Crystal Pro

Your Crystal Pro Water Dispenser contains a simple, intuitive user interface for operation and status. Hot and Cold buttons are backlit and a nightlight is provided in the dispensing area.



Button/LED	ON	OFF	Flashing
Power Indicator	Dispenser Powered	Dispenser Unpowered	N/A
Hot Button	Always On	Dispenser Unpowered	N/A
Ambient Button	N/A	N/A	N/A
Cold Button	Always On	Dispenser Unpowered	N/A
System Fault Indicator	UV Bulb Needs Replacement	UV System Ready	System Fault – i.e. Leak, Short-Circuit
Night Light	Dark Environment	Light Conditions	n/a

Note: To prevent the inadvertent dispensing of hot water, the dispense button must be held for 3 seconds until a beep is heard. Press the button again for water to dispense

Service & Maintenance

Once assembled, installed and flushed properly, your Crystal Pro Water Dispenser will provide years of trouble-free operation. Installation and service should only be carried out by a trained service professional. If applicable, filtration cartridges should be replaced every six months or as directed by the manufacturer. The hot water tank may require periodic descaling of mineral buildup inside the tank.

Service Notes

Caution:

Do not clean the water dispenser with a power washer or water jet device.

- 1) Sterile gloves must be worn when handling the filters, reservoir or any components that have contact with the drinking water.

General Maintenance

- 1) Wipe all surfaces on the front panels, dispensing buttons, dispenser area, faucet, and drip tray with an anti-bacterial cleaning wipe or spray.
- 2) Remove and clean the drip tray and grill. If the grill is damaged or heavily stained it should be replaced.
- 3) Wipe away any dust which may have accumulated on the condenser grill.
- 4) Drain both tanks after long periods of non-use.
- 5) On R/O models periodically inspect the flow restrictor to ensure it is clean and unrestricted.

Caution:

Use only factory-authorized replacement parts. Using unauthorized parts or accessories may cause damage or affect performance. Any damage, diminished performance or property damage from using unauthorized parts or accessories is not covered under the manufacturer's warranty.

Sanitize Reservoirs

- 1) All water reservoirs should be sanitized at regular intervals, especially after a long period of non-use. This is best accomplished using a sanitization kit if available or by using the procedure outlined below.
- 2) Prepare water dispenser for the service
- 3) Turn off both the hot and cold switches at the rear of the unit.
- 4) Unplug the electrical supply to the unit.
- 5) Turn off the water supply to the unit.
- 6) Drain all water storage tanks using the drain ports located at the rear of the dispenser.

Service & Maintenance

Caution:

Take care to prevent burns when draining the hot tank.

- 7) Remove the existing filtration cartridges
- 8) Open the front panel to gain access to the filtration compartment.
- 9) Remove all cartridges from the filter compartment.
- 10) For R/O systems, ensure that the drain line with flow restrictor between the R/O cartridge and drain port is removed first.

Install the Sanitization Cartridges

- 1) Place a sanitization cartridge (this can be an empty filter cartridge or one supplied by your filter supplier – not supplied with dispenser) inline before the water inlet of the unit.
- 2) Using a small eyedropper, prepare the sanitization cartridge by adding two teaspoons of unscented, liquid chlorine bleach.
- 3) Insert this cartridge inline prior to the system.
- 4) If you have empty sanitization cartridges install them in the remaining positions. If you do not, remove your filtration system, then bypass it with a ¼" polyethylene tubing and 2 - ¼" union quick connect fittings. Refer to the service manual of the filtration system being used for proper sanitization of your system.
- 5) Begin the sanitization process
- 6) Plug in the dispenser.
- 7) Slowly turn on the water supply.
- 8) Check for leaks or spills which may cause the leak detection system to activate.
- 9) Once all tanks are filled (approximately 3-5 minutes) let stand for 5-10 minutes.
- 10) Press and hold the hot, ambient and cold dispense buttons until water begins to flow.
- 11) Continue for 10 minutes, or until the bleach has been thoroughly flushed from the system.

Draining Reservoirs

- 1) Unplug the electrical supply to the unit.
- 2) Turn off the water supply to the dispenser.
- 3) Remove the cold drain plug on the rear to allow water to drain into a bucket.
- 4) Tilt the unit backward to facilitate draining of the water.
- 5) Repeat this process for the hot tank side.
- 6) Reinstall both drain plugs and verify they are secure.

Service & Maintenance

- 7) Remove and replace cartridges
- 8) Remove all sanitization cartridges from the manifold or water inlet.
- 9) Turn water supply on and fill unit to flush remaining sanitizing agents then repeat steps 18-23
- 10) Install new filtration cartridges.
- 11) For R/O systems, ensure that the drain line is connected between the R/O cartridge and drain port. Verify that the flow restrictor is properly installed.
- 12) Record the service date on the filtration panel.
- 13) Wipe down the base of the filtration compartment and reinstall the filtration panel.
- 14) Return the dispenser to service
- 15) Wipe down the drip tray and all outer panels.
- 16) Clean any dust and debris from the condenser grill.

UV System Replacement

- 1) Turn off the “hot” and “cold” switches on the rear of the dispenser.
- 2) Turn off the water supply and activate the dispensing buttons to relieve any pressure in the unit.
- 3) Unplug the electrical cord from the wall socket.
- 4) Remove the top panel to gain access to the UV assembly either on the reservoir lid or in the water outlet tube. If replacing the UV on the reservoir lid, remove the lid from the reservoir.

Warning:

Do not remove the lamp from holder while illuminated and never look directly at the UV light as UV radiation is dangerous for the eyes and skin

- 5) Unplug the UV wire connector.
- 6) Remove the old UV assembly by gently pulling the assembly out of the outlet tube or by unscrewing the locknut if replacing the reservoir UV.
- 7) Install the new UV LED (Crystal Mountain part number ELE-C100401 or SUB-C400050) by pushing into the outlet tube or, if replacing the LED in the reservoir lid, by securing it in place with the locknut.
- 8) Re-attach the wire connector.
- 9) Plug the electrical cord into the wall socket.
- 10) Slowly turn on the water supply.
- 11) If the UV on the water outlet tube was replaced, activate the dispensing buttons and check that there is no leak before installing the top panel.
- 12) Reinstall the top panel.
- 13) Turn on the “hot” and “cold” switches on the rear of the dispenser.

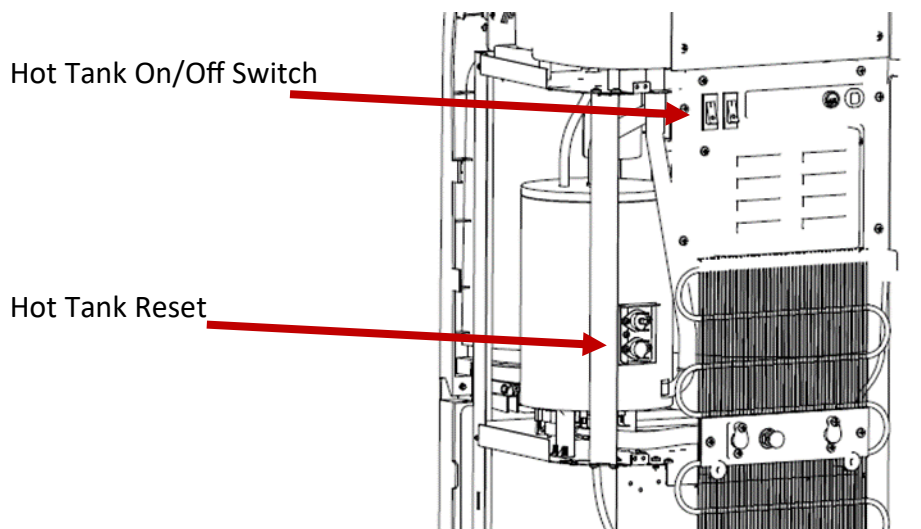
Service & Maintenance

Reset Leak Detection System

All models of Crystal Pro Water Dispensers are equipped with a leak detection system. This system will generate an audible and visual warning upon detecting water in the base of the unit. In addition, the system will automatically shut off the incoming water supply valve to prevent further damage. The leak detection warning will stop once the leak is stopped and the affected area is dried out.

Service notes

If an audible "click" is heard within 5 minutes of turning on the red power switch, the hot tank is likely empty, and has overheated. The hot tank limiter will need to be reset.



Caution:

Turn off the hot tank and unplug the unit's power cord before resetting the hot tank!

Troubleshooting

Symptom	Possible Cause	Solution
No Power / Power status indicator off	No power to unit Circuit breaker or GFCI is tripped Blown fuse	Check outlet and plug for proper connection Check external circuit breaker/GFCI Check fuse at rear of unit and replace if needed
Tanks not filling during initial setup	External water supply is turned off Leak detection system activated Blockage in filtration system R/O filtration installed	Check external water supply valve Fix source of leak Remove source of blockage Allow several hours for RO to fill
Water is not hot or cold	Power switches turned off	Check the power switches on the rear panel
No, or low, flow from cold	Water inside the cold tank frozen	Turn off the cold switch for 4 hours to melt ice inside tank
No, or low, flow from hot	Hot tank needs to be descaled	De-scale hot water tank
No, or low, flow from both hot and cold	Filter cartridges may need changed Low pressure from water supply	Change filter cartridge(s) Check water supply pressure.
Dispensed hot water is cold	Hot tank limiter has tripped	Reset the hot tank limiter.
Dispensed cold water is warm	Cold switch is off Unit is not installed correctly Refrigeration Leak	Check that the cold switch is "on" Check that the unit is 4" from the wall, not in direct sunlight or in a room with high ambient temperature.
Water has a "bad" taste	Unit not sanitized or Filters not flushed	Sanitize the dispenser. If the bad taste persists, taste the water coming directly from the filter cartridge and change as necessary. If still bad, change the filter, or contact your service provider.

Specifications

Cabinet

Color	Black/Black
Material	Metal side panels, ABS front panels
Dimensions	15.4" X 14.8 " X 46.3" (391X 375 X 1175mm)
Empty Weight	61 lbs. (22.8 Kg)
Water Connections	1/4" push to fit style

Water Dispenser

Temperature Options	Hot, Ambient and Cold
Storage Tank Material	Stainless Steel (plastic for 3 gallon internal storage tank)
Hot	Temperature Range 181°F (83 °C)
	Storage Capacity 0.3 Gallons (1.2L)
	Heating Capacity Min. 1.32 Gal/hr (5 L/hr) dispensed above 176°F (80°C)
Cold	Temperature Range 41-50°F (5-10 °C)
	Storage Capacity 3 Gallons (11.4 L)
	Chilling Capacity Min. 1.32 Gal/hr (5L/hr) dispensed below 50°F (10°C)
Min/Max Water Pressure	20 - 80 psi (1.4 – 5.5 bar) Failure to use an appropriate anti-flood device for any reason will not obligate or make Crystal Mountain responsible in any way for Product
User Interface	
Electronic Controls / Status Indicators	Illuminated Pushbutton / Power LED
Adjustable Temperature Range	No
On/Off Switch	Hot and Cold

Safety Features

Dual action, safer, hot water dispense	Standard
Leak detector with auto shutoff	Standard
Antimicrobial coating	Standard on all user contact points and post UV
UltraViolet LED	Standard

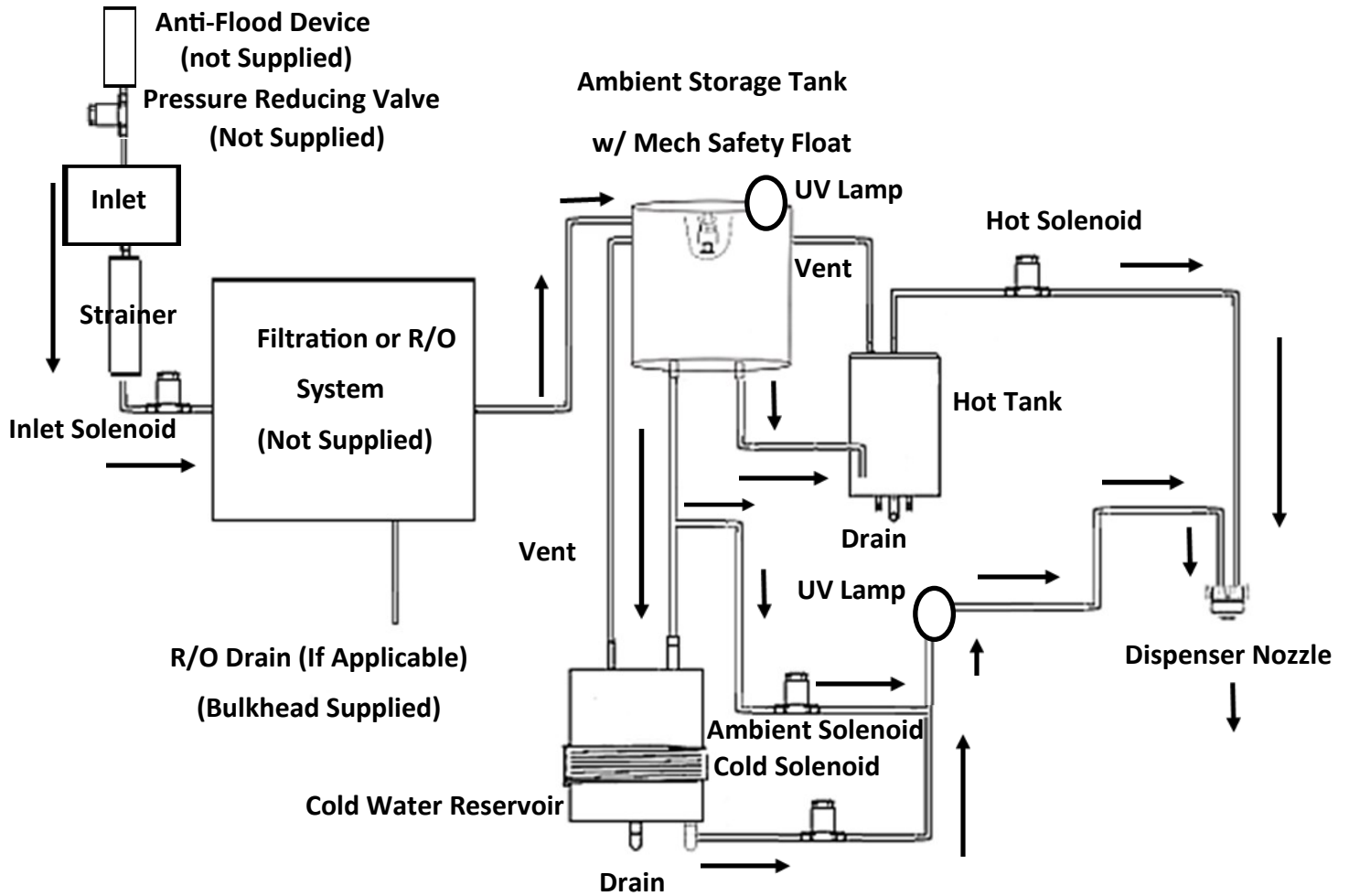
Electrical

Operating Voltage	US version: 120 VAC/60Hz (550W) EUR version: 220-240VAC/50Hz (550W)
Energy Consumption	120V/220V: ~1.0 KWH

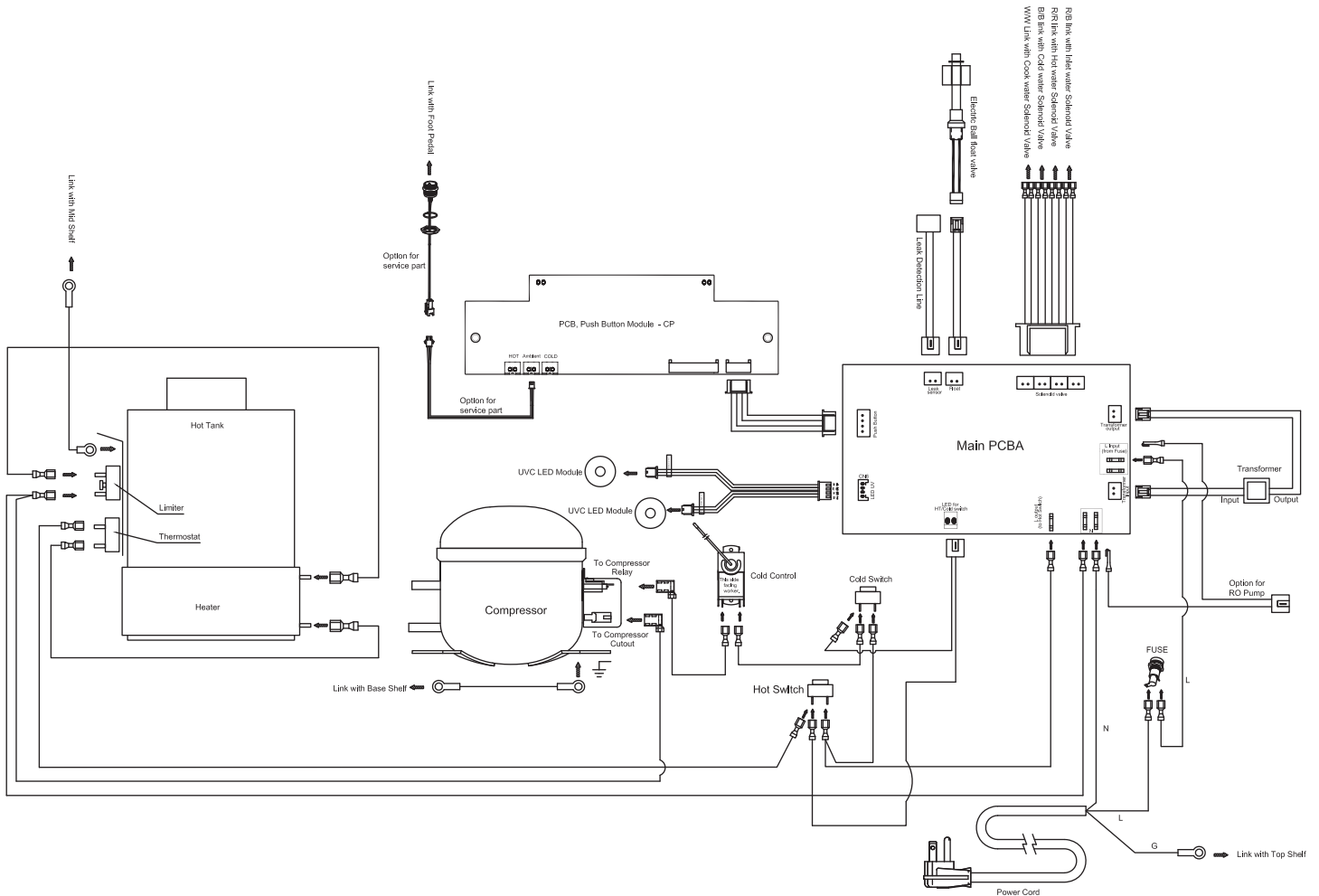
Environmental

Refrigerant	R134a 1.4 Oz (40 grams)
Decibels	45dB

Flow Diagram



Electric Diagram



Crystal Mountain Two Year Limited Warranty

FIRST YEAR:

Crystal Mountain Products Inc promises the original purchaser (user) to repair, or replace, at Crystal Mountain's discretion, any part of this water cooler which proves to be defective in material or workmanship under normal use, for a period of one year from the date of the original purchase. During the first year of warranty, Crystal Mountain will provide parts, at no charge, necessary to repair the product, provided that the water cooler has been installed and operated according to the manufacturer's written instructions. Failure to follow all instructions for operation and maintenance provided with this unit voids the warranty.

The hot tank casing is to be free from defects in material and workmanship under normal use for 2 years. This does not include electrical wiring and components.

If it becomes necessary to ship the inoperative water cooler to an authorized service center or to Crystal Mountain, the user will be responsible for shipping the product, prepaid, via common carrier. Local delivery charges are not covered.

The warranty does not cover charges to disconnect and reconnect plumbing and electrical connections. In addition, the warranty does not cover the cost of diagnostic charges, including any problems with the sealed refrigeration system.

SECOND YEAR:

Crystal Mountain promises within the second year to repair, or replace, at its discretion, any part of the sealed refrigeration system which is determined to be defective in material or workmanship.

If it becomes necessary to ship the defective water cooler to an approved service center or to Crystal Mountain, the user will be responsible for shipping the product, prepaid, via common carrier. Local delivery charges are not covered.

The warranty does not cover charges to disconnect and reconnect plumbing and electrical connections. In addition, the warranty does not cover the cost of diagnostic charges, including any problems with the sealed refrigeration system.

GENERAL PROVISIONS AND EXCLUSIONS:

This warranty is only applicable within the Continental Limits of the United States of America and Canada.

This warranty will be voided if the serial number is removed, defaced or obliterated.

This warranty will be voided if parts to repair the water cooler are not obtained from Crystal Mountain. In addition all service to the sealed refrigeration system must be performed by an authorized service agent or Crystal Mountain.

This warranty does not cover any inoperative components which occur as a result of liming, scaling or other environmental conditions.

This warranty does not apply to any water cooler or components that become inoperable because of a failure to satisfy standards or regulations adopted by any government or agency thereof, subsequent to the date of shipment from the factory.

Crystal Mountain will not be liable for damage or wear to products caused by abnormal operating conditions, accident, abuse, misuse, unauthorized alteration or repair, or if the products were not installed in accordance with Crystal Mountain's printed installation and operating instructions, or for any damage caused by hot water, freezing, flood, fire, or acts of God.

WARNING

Crystal Mountain hereby disclaims any and all implied warranties including, but not limited to, the implied warranties of merchantability and fitness for a particular purpose. The manufacturer or its agents shall not be liable for consequential damages, whether economic or otherwise, resulting from breach of this limited warranty. Failure to follow all instructions for operation and maintenance provided with this unit voids the warranty.

The foregoing is in lieu of all other agreements expressed, implied or statutory and all other obligations or liabilities of Crystal Mountain. Crystal Mountain does not assume or authorize any person to assume any obligations of liability in connection with this product. In no event will Crystal Mountain be liable for special or consequential damages or for any delay in the performance of this agreement due to causes beyond their control.

FILTER AND RO MEMBRANE LIMITED WARRANTY

Subject to the conditions and limitations described below, Crystal Mountain warrants their filter cartridges to be free from defects in material and workmanship at the time of installation, or six months from the date of purchase, whichever comes first, when used within the operating specifications listed in the filter "Installation and Service Guide".

RO MEMBRANE WARRANTY

Membranes carry a twelve (12) month prorated warranty as follows: Credit 1/12th of the replacement cost for each unused month provided the system is installed and maintained according to factory instructions and the unit is operated within the specifications listed in the filter "Installation and Service Guide".

CONDITIONS OF FILTER WARRANTY

The above warranty will not apply to the filters or RO membranes that are damaged because of neglect, misuse, alteration, accident, misapplication, physical damage, fouling and/or scaling of membranes by minerals, bacterial attack, sediment, or damage caused by fire, acts of God, freezing, or hot water.

If the filters/membrane are altered by anyone other than Crystal Mountain the warranty is void. Crystal Mountain assumes no warranty liability in connection with the Reverse Osmosis or Filtration system other than specified herein. Crystal Mountain will not be liable for any consequential damages of any kind or nature due to use of Crystal Mountain products.

