

**KEMI
MOTO**

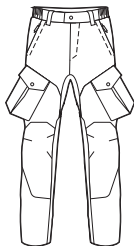


KEMIMOTO HEATED PANTS

User Guide

1 Year Limited Warranty

What's Included



HEATED PANTS X1



RECHARGEABLE BATTERY x1



TYPE-C CHARGING CABLE x1



WARNING

Read all safety warnings and instructions. Failure to follow warnings and instructions may result in electric shock, fire and/or serious injury. Save all warnings and instructions for future reference.

Cleaning Instruction



RECOMMEND TO USE MESH LAUNDRY BAG

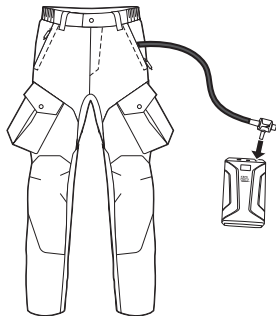
- LINE DRY
- MACHINE WASH
- GENTLE CYCLE IN COLD WATER
- HAND WASH WITH COLD WATER
- ✗ DO NOT IRON
- ✗ DO NOT BLEACH
- ✗ DO NOT DRY CLEAN
- ✗ DO NOT WRING OR TWIST



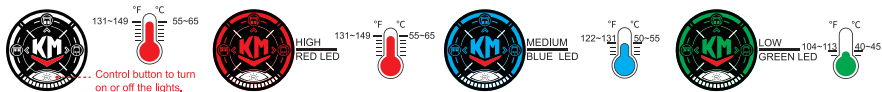
IMPORTANT: Disconnect and remove the battery from the zipper pocket, put the connector back, and zip up before washing the pants.

Operation Instruction

1. Connect the battery. The switch will light up the red, blue, and green lights in sequence, and then automatically turn off.
2. Long press the middle switch key for 3 seconds; the red light indicates high temperature. Short press the button in sequence to adjust the gear: the blue light indicates medium temperature, and the green light indicates low temperature.
3. Short press the button below to turn off the light (i.e., the switch light is off, but heating continues). Press the light button again to turn the light on. When the light is off, pressing any key in any section will turn the light on, and it will work normally. The light will automatically turn off within 2 seconds if there is no further operation.
4. To turn off, long press the middle button for 3 seconds until the LED light goes out.
5. The buttons in different sections control different heating areas, and the heating areas of each section can be turned on or off independently.



Heat Setting Indicator



The heating level can be adjusted by pressing the power button. Each press will cycle through the apparel's temperature settings. At a room temperature of 77°F/25°C, the heat will rise to 131-149°F/55-65°C on high, 122-131°F/50-55°C on medium, and 104-113°F/40-45°C on low.

Only Work for 12V heated product with 5.5mm Connector Size.

Do Not Work for heated product with 4.0mm and 3.5mm Connector Size!



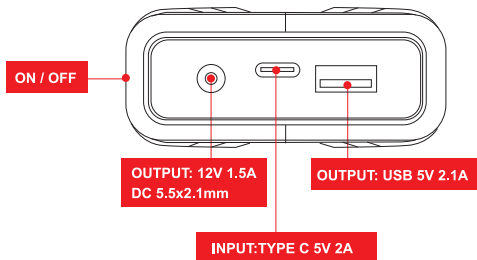
5.5mm



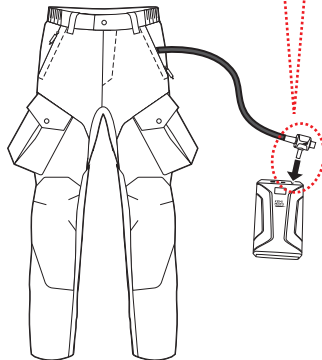
3.5mm



4.0mm



DC 5.5x2.1mm: Adapted to 12V power banks with 5.5 mm DC output.
Type C: Adapted to fast charging power banks (PD 20W or above) .



Battery Instruction

Product Model	NR2012
Nominal Capacity	20000mAh 3.85V/77Wh
Input Type-C	5V 4.5A/9V 3.8A/12V 2.9A/20V 1.75A MAX35W
Input DC	12V 1.5A
Output USB	5V 4.5A/9V 3A/12V 2A/20V 1.2A MAX22.5W
Output Type-C	5V 4.5A/dV 3.8A/12V 2.9A/20V 1.75A MAX35W
Output DC	12V 2.5A
Battery Type	Li-ion Battery

NOTE :

- Do not freeze or immerse the battery in water or any other liquid.
- Do not drop, disassemble, open, crush, bend, deform, puncture, shred, microwave, incinerate or paint the battery.
- Do not store your battery with metal objects, such as coins, keys or necklaces. If the battery terminals come in contact with metal objects, this may cause a fire.
- Recommended operating temperature of 14°F to 86°F (-10°C to 45°C).
- Fully charge before first use.
- Fully charge every 6 months if not in use to preserve the battery life.
- Keep the battery away from moisture. Store the battery pack where the relative humidity is 60 ± 15% RH.

BATTERY CHARGING :

1. Press the battery button to check the remaining power level or charging level from the battery LCD display.
2. Remove battery from the product before charging and connect battery with charger.
3. It takes about 4-6 hours for an empty battery to be fully charged using fast charging (a lightning symbol will be displayed during fast charging).
4. When the battery is fully charged, the number on the battery LCD display shows 100.

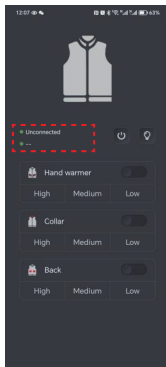
APP Operation Instruction



(Figure 1)



(Figure 2)



(Figure 3)



(Figure 4)



(IOS)



(Android)

1. Open Google Play or the App Store and search for and install the NRHeatTech APP.
2. Connect the clothing to a power source.
3. As shown in (Figure 1), turn on the Bluetooth on your phone: open the drop-down status bar at the top of the screen, click on the Bluetooth icon.
4. Click on the NRHeatTech icon (Figure 2) to open the app. Please allow precise location permission.

5. Click on "Unconnected" to enter the device list and scroll down to search for the Bluetooth device named "HeatTech".
6. Click on "HeatTech" in the list (Figure 2) to connect to the Bluetooth. The app will automatically return to the main page, displaying the currently connected product (vest, hoodie, pants, etc.), and the Bluetooth connection information bar will show "Connected".
7. Turn on the power switch on the app, and the three zones of the clothing will display high-power heating.
8. As shown in (Figure 2), click on the High, Medium, and Low buttons in the Hand warmer zone to adjust the corresponding heating temperature. Click on the N/F button in the Hand warmer zone to individually turn on or off the heating in that zone. Click on the High, Medium, and Low buttons in the Collar zone to adjust the corresponding heating temperature. Click on the N/F button in the Collar zone to individually turn on or off the heating in that zone. Click on the High, Medium, and Low buttons in the Back zone to adjust the heating temperature. Click on the N/F button in the Back zone to individually turn on or off the heating in that zone.
9. Click on the light button to turn the switch light on or off on the heated clothing. The gear position remains unchanged. In the off state, adjust the gear, and the light will turn on for 3 seconds before automatically turning off.
10. To connect another clothing product, click on "Connected" to enter the device list, refresh the list by scrolling down, disconnect the previously connected device, and select the new device to connect. Refer to control operations 7-9.

Safety Instruction



WARNING

Do not try to use this product outside of its designated use, as doing so might be dangerous.

- Do not use this heated pants with an infant, child, a helpless person, or anyone insensitive to heat, such as a person with poor blood circulation.
- If your health condition makes you sensitive to overheating, please consult your physician to determine whether it is appropriate to use this product.
- Do not allow the cords to be pinched or forced pull out.
- Not recommended to wear over bare skin.
- Never use it if inner liner is wet.
- Turn off the power immediately if discomfort occurs.

Please contact us if you have any questions



service@kemimoto.com



<http://www.kemimoto.com>

FCC Caution:

This device complies with part 15 of the FCC Rules. Operation is subject to the following two conditions: (1) This device may not cause harmful interference, and (2) this device must accept any interference received, including interference that may cause undesired operation.

Any Changes or modifications not expressly approved by the party responsible for compliance could void the user's authority to operate the equipment.

Note: This equipment has been tested and found to comply with the limits for a Class B digital device, pursuant to part 15 of the FCC Rules. These limits are designed to provide reasonable protection against harmful interference in a residential installation.

This equipment generates uses and can radiate radio frequency energy and, if not installed and used in accordance with the instructions, may cause harmful interference to radio communications. However, there is no guarantee that interference will not occur in a particular installation. If this equipment does cause harmful interference to radio or television reception, which can be determined by turning the equipment off and on, the user is encouraged to try to correct the interference by one or more of the following measures:

- Reorient or relocate the receiving antenna.
- Increase the separation between the equipment and receiver.
- Connect the equipment into an outlet on a circuit different from that to which the receiver is connected.
- Consult the dealer or an experienced radio/TV technician for help.

The device has been evaluated to meet general RF exposure requirement. The device can be used in portable exposure condition without restriction.



Please contact us if you have any questions



service@kemimoto.com



<http://www.kemimoto.com>