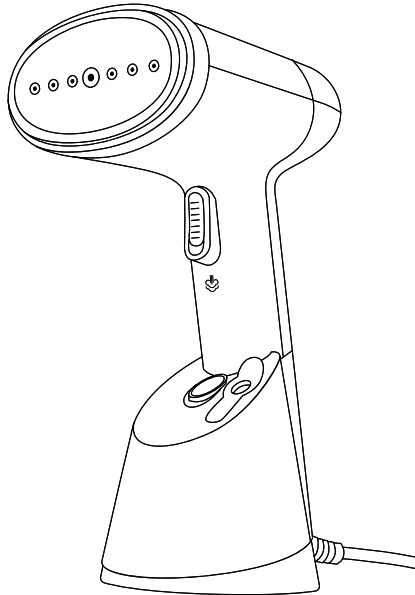




USER MANUAL

# Handheld Garment Steamer

Model : GC 111



Connect with us @goodscityindia



<https://goodscity.in>

## **IMPORTANT NOTE :**

1. This fabric steamer is not an equivalent in usage to a normal Iron. It is solely meant for sterilization of the garment and removal of wrinkles & ceases from fabrics.  
The steamer is not recommended for pressing sturdy or thick fabrics like denims & heavy cottons.
2. Do not store the clothes steamer with water in the water tank. Always empty the tank after use.
3. There may be leakage from the steam head if the clothes steamer temperature is not high enough to vaporize water and create steam. Therefore, ensure that the clothes steamer is always preheated for 20 seconds prior to use.

## **FEATURES**

- Compact, lightweight and portable
- Fast steaming in 20 Sec
- Good Steam-Out effect
- Vertical & horizontal ironing makes usage easy
- Two-button easy control, indicator light shows working status
- The movable water tank can be filled with water easily, the transparent body can observe the water level at any time, and can prevent water leakage and electricity leakage
- Multiple anti-dry burning design, comprehensive protection and more assured
- Detachable brush: Helps remove visible surface dust & lint balls from thick fabrics.

## **PRODUCT PARAMETERS**

Product Name	: Garment Steamer
Model	: GC 111
Power	: 1200W
Voltage	: 220V-240V
Steam rate	: 21+ _4g/min
Cord Length	: 1.8 meters
Water Tank	: 250 ml
Preheating time	: 30s
Working time	: 12 mins
Product Size	: 223 x 158 x 120 mm
Box Size	: 260 x 195 x 140 mm
N.W./G.W.	: 0.73KG/ 0.95KG

## **PACKING LIST**

- |                                 |                             |                  |
|---------------------------------|-----------------------------|------------------|
| 1x Hand-held Clothes Steamer    | 1x Fabric Brush (removable) | 1x Measuring Cup |
| 1x 250ml Water Tank (removable) | 1x Operating Manual         |                  |

## **IMPORTANT: PLEASE RETAIN YOUR MANUAL FOR FUTURE USE.**

We believe that safe performance is the first priority in any consumer product, so as our valued customer can confidently use and trust our products. We suggest that any electrical appliance you use should be operated in a sensible method with due care and attention placed on the following important operating instructions.

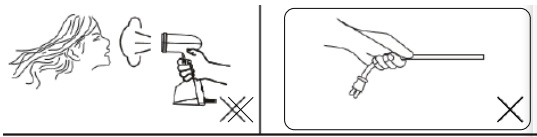
## **IMPORTANT SAFEGUARDS :**

- This appliance is not intended for use by persons (including children) with reduced physical, sensory or mental capabilities, or lack of experience and knowledge, unless they have been given supervision or instruction concerning use of the appliance by a person responsible for their safety and understand the hazards involved. Children shall not play with the appliance. Cleaning and user maintenance shall not be made by children without supervision.
- If the supply cord is damaged, it must be replaced by the manufacturer, the service agent or similarly qualified persons in order to avoid a hazard.
- Care should be taken when using the appliance due to the emission of steam.
- Please remember to unplug the clothes steamer before attaching or detaching the fabric brush during filling, cleaning and descaling.
- Any maintenance other than cleaning should be performed at an authorized service centre.
- Remove and safely discard any packaging material and promotional labels before using the clothes steamer for the first time.
- To eliminate a choking hazard for young children, remove and safely discard the protective cover fitted to the power plug of this clothes steamer.
- Do not place the clothes steamer near the edge of a bench or table during operation. Ensure that the surface is level, clean and free of water and other substances.
- Always ensure the clothes steamer is properly assembled before use. Only use the attachments or accessories provided and specified in this book. Follow the instructions provided in this book.
- Do not use in bathrooms.
- Do not leave the clothes steamer unattended when connected or in use.
- If the clothes steamer is not used for an extended period, disconnect the clothes steamer from the power outlet.
- Allow the clothes steamer to cool completely before storing the clothes steamer.
- Always place the clothes steamer on its base when storing. Do not leave the clothes steamer unattended while connected.

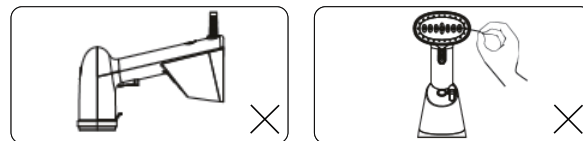
- Do not touch hot surfaces. This clothes steamer allows the user to garment steam with a large flow of steam. High temperatures are generated during use which could cause burns. Always position your hands at the neck of the clothes steamer when holding it and warn others (especially children) of the possible dangers of burns from steam, hot water or hot parts, especially when garment steaming vertically.
- Store the clothes steamer out of reach of children.
- The clothes steamer must be used and rested on a stable surface.
- When placing the clothes steamer on its base, ensure that the surface on which the base is placed is stable.
- The clothes steamer is not to be used if the clothes steamer has been dropped, if there are visible signs of damage or if it is leaking.
- The clothes steamer is designed for household use, business trip and to be used with the tap water. Do not put perfume, vinegar, or other chemicals in the tank. This appliance is not designed to work with these chemicals.
- Always test the clothes steamer on a small discreet part of the fabric to be steamed to ensure the temperatures are not too high for the fabric.
- To prevent damage to the clothes steamer, do not use alkaline cleaning agents when cleaning; Using a soft cloth and mild detergent.
- The clothes steamer generates high temperature steam. Do not touch the steam head during use. When using the clothes steamer, make sure the steamer head is facing away from you and in an upright position.
- The clothes steamer incorporates a thermal safety fuse to protect the clothes steamer from over-heating. However the clothes steamer should not be left unattended while it is connected to the power outlet. Special care should always be taken when there are children in the home/vicinity of the clothes steamer.
- Do not fill the water tank past the MAX indicator line as this may cause the water to leak.
- Never use the clothes steamer while clothes are on the body or direct the steam towards people or animals.
- Do not allow the cord to touch hot surfaces.
- Keep the clothes steamer clean. Follow the cleaning instructions provided in this book.

## PRECAUTIONS

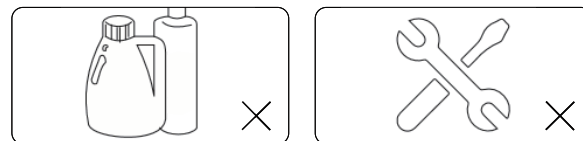
- Please do not face the steam to the human body during the use of the product to avoid burns.
- Do not entangle, pull or crush the power cord, which may expose the power cord and cause electric shock and fire.



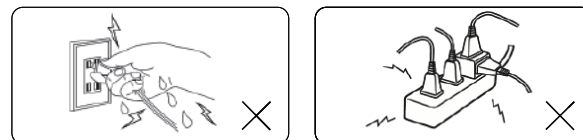
- Do not fall sideways to prevent water leakage from damaging the floor, tables and blankets.
- Do not insert needles or other foreign objects into the steam outlet of the ironing bottom plate to avoid electric shock or burns.



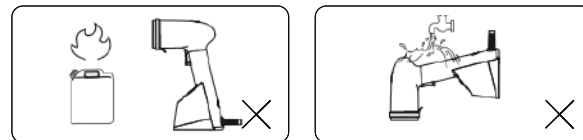
- Do not add perfume, vinegar, descaling agent or other chemicals to the water tank to avoid staining clothes.
- Please do not modify, disassemble or repair this product by yourself, it may be damaged due to a single operation and affect the life of the machine.



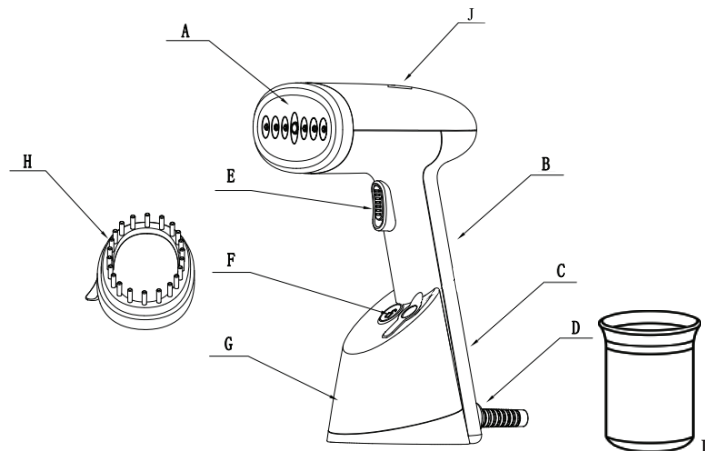
- When inserting or unplugging the plug, please hold down the plug and then pull it out, do not pull, twist the power supply, keep your hands dry to avoid electric shock.
- Do not use extension cords with external plugs and do not share plugs with other products to avoid danger.



- Do not approach water sources, fire sources, and flammable materials during use to avoid electric shock or fire.
- Do not immerse the product in water or other liquids, or aim at the water source to rinse or pour water to avoid electric shock.



## NOMENCLATURE



A. Steam head

B. Handle

C. Power button

D. Cord guard

E. Steam activation button

F. Water tank release button

G. Water tank (removable)

H. Fabric brush (removable)

I. Measuring cup

J. Power indicator light

## USING YOUR CLOTHES STEAMER

### Before first use

- Remove any sticker or protective cover from the steam head.
- Unwind and straighten the cord before use.
- When operating the clothes steamer for the first time, allow it to steam for 20 seconds.
- This will remove any impurities and odors that might have been left by the manufacturing process.
- When operating the clothes steamer for the first time, you may want to try the steamer on an old piece of fabric before steaming your garment.

**Warning:** To avoid an electrical circuit overload, it is recommended that no other appliances are plugged into the same circuit as your clothes steamer when it is in use.

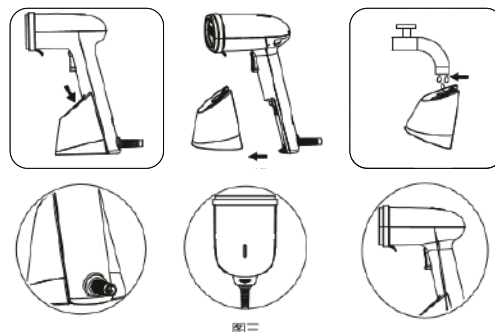
**Note:** when unpacking the clothes steamer, check to see you have received all the items listed in the parts list, before discarding the packaging.

## OPERATING YOUR FABRIC STEAMER :

1. Press the release button on the water tank to pull the tank out. Open the inlet cover next to the release button and fill water until it reaches maximum level. Replace the tank by pushing down and holding the release button. NOTE: Ensure the water tank is at least one third full.

2. Hold the appliance with your hand positioned safely at the neck of the garment steamer in an upright position, use your other hand to attach the fabric brush onto the steam head. The fabric brush can be attached either way and will lock into position with an audible "click".

3. Connect the appliance to a power outlet and switch on. Press power button to see the power indicator light flashes & appliance starts heating. Wait for 20 seconds then, As the lights become stable it indicates that you can start using the device.



## HOW TO STEAM YOUR GARMENT

- The clothes steamer is easy to use and is perfect for removing wrinkles/creases from garments and curtains as well as refreshing furnishing fabrics.
- It can be used on most fabrics as long as the fabric is hanging or where the clothes steamer can be easily used in an upright position moving over the fabric in an up and down motion.

**NOTE:** The clothes steamer is designed to be used in an upright position on hanging garments. Be careful when ironing horizontally. It is generally recommended to hang the product for ironing.

1. Check that there is ventilation behind the fabric otherwise moisture may build up causing mildew.
2. Check garment pockets are empty and turn-ups such as cuffs and hems are down.
3. Hang the garment from a hanger and stretch the fabric slightly with one hand checking that there is nothing behind the fabric that can be damaged by the steam.

**NOTE:** We recommend you do not steam over metal accessories. Using caution and steam around the metal accessories.

4. Press and hold down the steam button. you will feel vibrations and hear a subtle humming sound while steaming; this is normal, steam facing away from you and in an upright position.
5. Gently press steam head against the garment, moving your arm in an up and down motion targeting creases in the fabric.
6. Release the steam button to stop the steam.

**NOTE:** Ensure that the fabric to be steamed is being stretched whilst steaming for best results.

**WARNING:** The clothes steamer generates high temperatures of steam. Do not touch the steam head, make sure the steamer is facing away from you in an upright position.

## TO STEAM CURTAINS

1. Wash and dry curtains as directed, according to the fabric type.
2. Hang the curtains and steam when they are hanging in place.
3. Lightly stretch the curtain with one hand while steaming to help remove creases more easily.

## TO STEAM UPHOLSTERY

1. The clothes steamer can be used to help freshen up upholstery, slip covers on furniture and cushions from the furniture and in the room. Before steaming, always test on a small area of the fabric that is not visible.
2. Keeping the clothes steamer in an upright position and using an up and down motion. Lightly steam over the fabric of your furniture. Cushions should be removed and held upright for steaming. Allow cushions to dry thoroughly before replacing on furniture.

**WARNING:** If garment has metal accessories, be cautious and do not have clothes steamer directly over the metal as this may discolour the metal.

**WARNING:** Always unplug the clothes steamer before attaching or detaching the fabric brush.

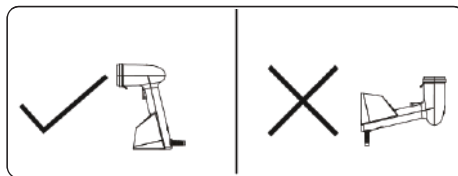
**NOTE:** Only use attachments or accessories provided.

**NOTE:** If the unit becomes noisy with a loud humming sound and no steam is being generated, check the water level in the water tank. This may indicate that the clothes steamer is out of water and needs to be refilled.

**WARNING:** Do not use the clothes steamer directly on the body, animals, or while wearing the garments.

## AFTER EACH USE

- Switch the power off at the power outlet and disconnect the power cord from the power outlet.
- Open the water tank inlet and (over a sink or bucket) invert the water tank to empty the remaining water from the tank.
- Stand the clothes steamer on its base, in an upright position, and allow to cool.

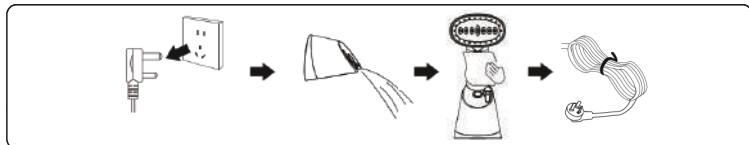


## CARE CLEANING AND STORAGE

### Care and Clean

- Clean device using a damp cloth.
- Do not use harsh or abrasive cleaning agents or solvents.
- Do not put the clothes steamer in water or any other liquid.
- Do not drop, throw or try and bend the steamer.
- Do not attempt to disassemble the appliance.
- The clothes steamer is designed for household use only and to be used with normal tap water. Do not put perfume, vinegar, or other chemicals in the tank. The appliance is not designed to work with these chemicals.
- Always empty the water tank after each use and rinse with clean water.
- Wipe outer surfaces with a damp cloth.
- Avoid operating the appliance in humid or moist places.
- Do not locate the appliance near a heat source or direct sunlight.
- Always ensure the steam outlet hole is clean and free from scaling and not blocked.

**Note:** Use only drinking water in this steamer for the long life of the steamer.



## Storage

- Once the clothes steamer has been disconnected from the power outlet, allowed to cool, emptied of water in the water tank and cleaned, it is recommended to wrap the cord safely around the steamer to store in an upright position.
- We recommend you store the clothes steamer on a flat surface, such as in a cupboard, until it is time to use it next.



Do not dispose of electrical appliances as unsorted municipal waste, use separate collection facilities. Contact your local government for information regarding the collection systems available. If electrical appliances are disposed of in landfills or dumps, hazardous substances can leak into the groundwater and get into the food chain, damaging your health and well-being.

## TROUBLESHOOTING GUIDE

Problem	Possible solution
The steamer does not heat up	<ul style="list-style-type: none"><li>Check main plug is inserted correctly.</li><li>Check power supply.</li><li>Check power button.</li></ul>
The steamer does not produce steam	<ul style="list-style-type: none"><li>Check the water level and the water tank inlet cover is properly covered.</li><li>Press the steam activation button harder.</li><li>Hold the steamer in an upright position.</li></ul>
Water spills from the water tank	<ul style="list-style-type: none"><li>Make sure water is not over the MAXIMUM level.</li><li>Make sure water tank inlet cover is properly closed.</li><li>Always use the steamer in an upright position as per the operating instructions.</li></ul>

The steamer is producing a loud humming or pumping sound	<ul style="list-style-type: none"><li>Check water level; If there is no water or it is low, refill the water tank.</li></ul>
The steamer does not seem to be removing creases easily	<ul style="list-style-type: none"><li>Hold the steamer in an upright position and stretch the fabric downward to ensure best results.</li></ul>
The steamer does not seem to be removing creases easily	<ul style="list-style-type: none"><li>Hold the steamer in an upright position and stretch the fabric downward to ensure best results.</li></ul>
Unsure when to use the fabric brush	<ul style="list-style-type: none"><li>Use when steaming is to directly touch the fabric.</li><li>When steaming delicate fabric, such as silk to reduce the risk of water dripping onto the garment while steaming.</li></ul>
Avoiding discoloring of metal accessories on the garment	<ul style="list-style-type: none"><li>Do not directly hover the clothes steamer over the metal accessories.</li><li>Use caution and steam around the metal accessories.</li></ul>

## WARRANTY & SUPPORT

Entitle yourself for the 1 year Goodscity warranty by registering your purchase and easily reach us to submit your product related issues & queries, when you follow these hassle free ways.

At Goodscity our top priority has always been our valued customers. We very well know your Goodscity product is a part and parcel of your everyday life, which is why we are more easily accessible than earlier.

\* For detailed warranty terms please visit the link :  
<https://goodscity.in>

\* For additional support :  
Mail us at : [help@goodscity.in](mailto:help@goodscity.in)  
or call us on : +91 890 890 1290