

# 6R



**JOHN DEERE**

NOTHING RUNS LIKE A DEERE



# 6R SAVES YOU MORE

Our 6R tractors feature cutting-edge automation for effortless site-specific farming thanks to 1-Click-Go-AutoSetup, and every 6R is a robust, low-weight, performance solution with supreme pulling power.

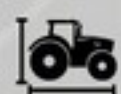
The new G5™/G5<sup>Plus</sup> CommandCenter™. Our largest screen ever. More space for your information. A faster processor for shorter boot up times. And, all in glorious high definition.





## CONTENTS

Introduction ..... 2



### OVERVIEW

Go Smart, Do More ..... 4

6R Small Frame Tractors ..... 8

6R Mid Frame Tractors ..... 10

6R Large Frame Tractors ..... 12

6R Xtra Large Frame Tractors ..... 14



### PRECISION FARMING

Farm Smart, Profit More ..... 16

1-Click-Go-AutoSetup ..... 18

Site-specific farming ..... 20

Next-level automation ..... 22



### CAB

Cab Comfort ..... 24

CommandARM™ ..... 28

Visibility ..... 30



### POWER & EFFICIENCY

Engines ..... 32

Transmissions ..... 34

CommandPRO™ ..... 38



### VERSATILITY

Ride Comfort ..... 40

Hitch Options ..... 42

Hydraulics and PTO ..... 44

Front Loaders ..... 46



### COMPLETE SOLUTION

PowerGard™ ..... 48



### SPECIFICATIONS

Specifications ..... 50





# GO SMART, DO MORE.

## NOTABLE FEATURES

Every 6R tractor is designed and engineered to be the most versatile, light and powerful constituent of your workforce – built to overcome the diverse challenges presented by terrain, prevailing conditions and operational windows.



### DOES IT ALL

Whether you're a livestock farmer, arable farmer, mixed farmer or a contracting business – one of our 6Rs was made for you.

### 1 | 1-CLICK-GO-AUTOSETUP

Reduce in-field setup time by up to 50%: Tasks planned in the John Deere Operations Center™ automatically appear on the G5™/G5<sup>Plus</sup> CommandCenter™ when entering the field – just one click confirms the details to start working.

### 2 | 6R 215: HIGHLY EFFICIENT DRIVETRAIN

The Chamber of Agriculture Lower Saxony (Germany) confirmed the exceptional efficiency of the 6R 215 in their 2020 tractor test.<sup>1</sup>

### 3 | PROVEN EFFICIENCY

The DLG-PowerMix-Test 2.0 (Field applications) confirmed the low fuel consumption of the 6R 150 with only 274 g/kWh Diesel and 8 g/kWh DEF.<sup>2</sup>

### 7 | ENGINE PERFORMANCE

The 4.5 l or 6.8 l John Deere engines with up to 301 hp give you maximum power at reduced operating costs.

### 8 | TRANSMISSIONS

Extra convenient, super efficient & powerful DirectDrive and efficient stepless AutoPower™.

### 9 | SMARTER HYDRAULICS

Smarter Intelligent Power Management for up to 40 additional HP in hydraulic applications and up to six rear selective control valves (SCV's) with up to 195 l/min hydraulic flow for top productivity.

<sup>1</sup>Chamber of Agriculture Lower Saxony (Germany) tractor test. "Comparing standard tractors (without Unimog) the John Deere achieved the lowest diesel consumption. [...] It is interesting that, despite the low fuel consumption, the 6215R was also the fastest when accelerating with two trailers"; [www.niedersachsen-profi-test.de](http://www.niedersachsen-profi-test.de), Profi Test Results, 06/2018 ([www.profi.de](http://www.profi.de)), Profi Test Results, 11/2021 ([www.profi.de](http://www.profi.de))  
<sup>2</sup>Profi 02/2023 ([www.profi.de](http://www.profi.de))





#### **4 | NEW G5™/G5<sup>PLUS</sup> COMMANDCENTER™**

Our largest screen ever. More space for your information. A faster processor for shorter boot-up times. All in glorious HD.

#### **5 | ALWAYS UP-TO-DATE**

JDLink™ enables remote servicing and operator support, and our regular over-the-air software upgrades ensure your tractor always has the latest updates.

#### **6 | LOW COST OF OWNERSHIP**

Low fuel consumption, low maintenance and repair costs and a very strong resale value guarantee the best value for your money.

#### **10 | OUTSTANDING CAB**

Extra spacious 3.33 m<sup>3</sup> very quiet 71 dB(A) cab, manufactured to automotive industry standards.

#### **11 | COMMANDPRO™**

Perfect ergonomics, driving strategy and reconfigurability.

#### **12 | COMFORT**

TLS™ Plus front axle Suspension and HCS Plus cab suspension work together to provide the best ride & drive experience.





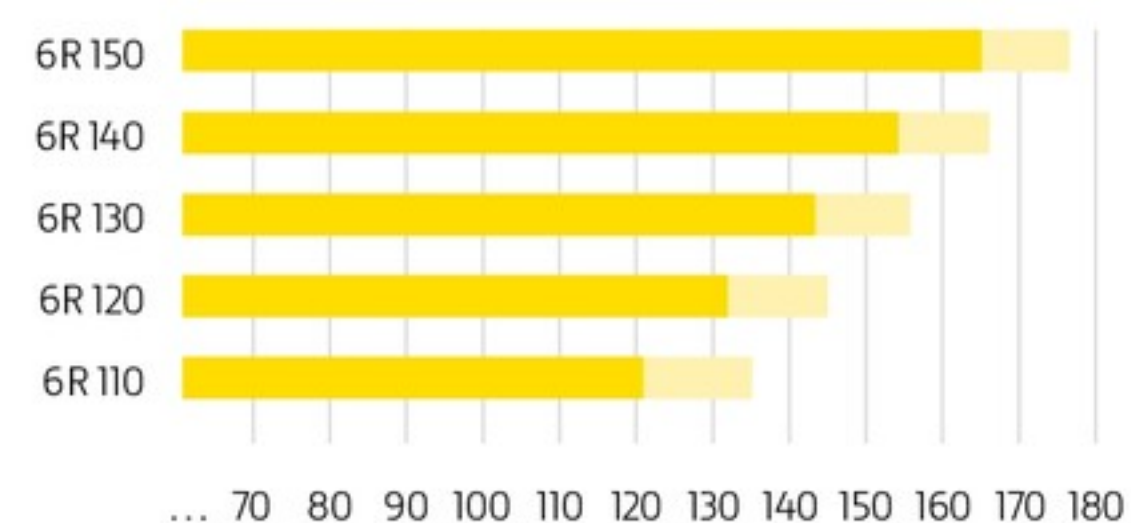
### SMALL FRAME: COMPACT, LIGHT AND POWERFUL



\* With 540/65R24 front tyres and 600/65R38 rear tyres

**6,500 KG\*\***

### ENGINE PERFORMANCE

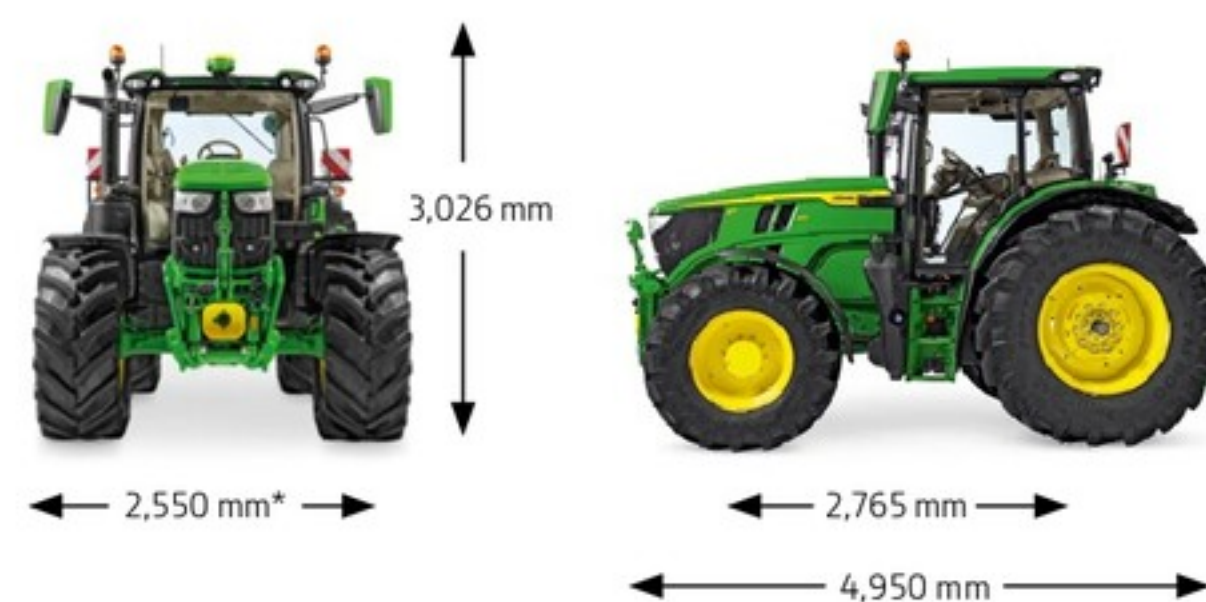


■ Max. power (ECE-R120), hp  
■ Max. power with IPM (ECE-R120), hp

\*\* With average specifications



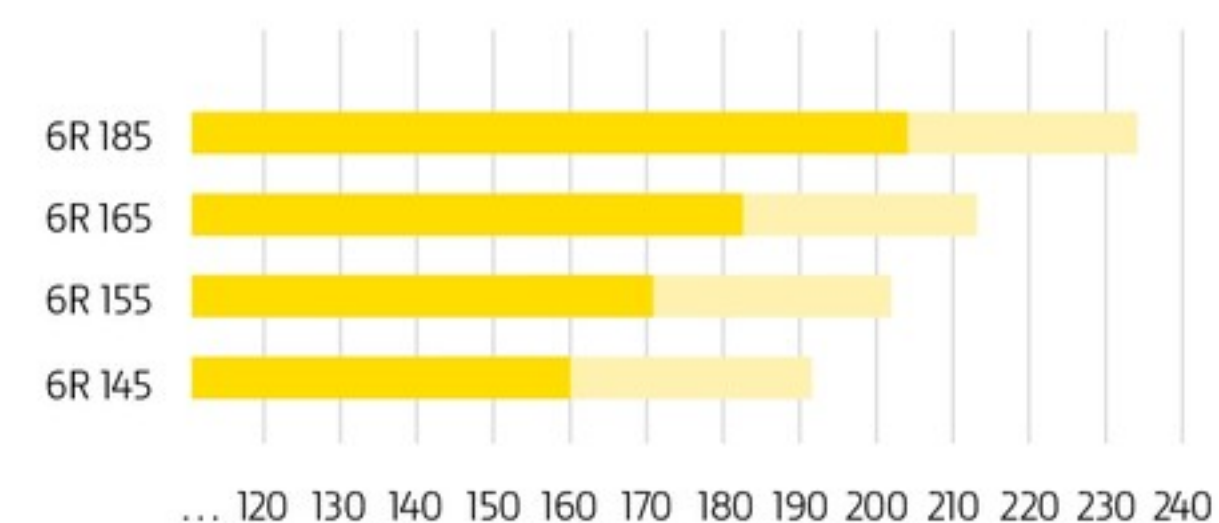
### MID FRAME: ULTIMATE VERSATILITY AND PERFORMANCE



\* With 540/65R28 front tyres and 600/65R38 rear tyres

**7,900 KG\*\***

### ENGINE PERFORMANCE



■ Max. power (ECE-R120), hp  
■ Max. power with IPM (ECE-R120), hp

\*\* With average specifications





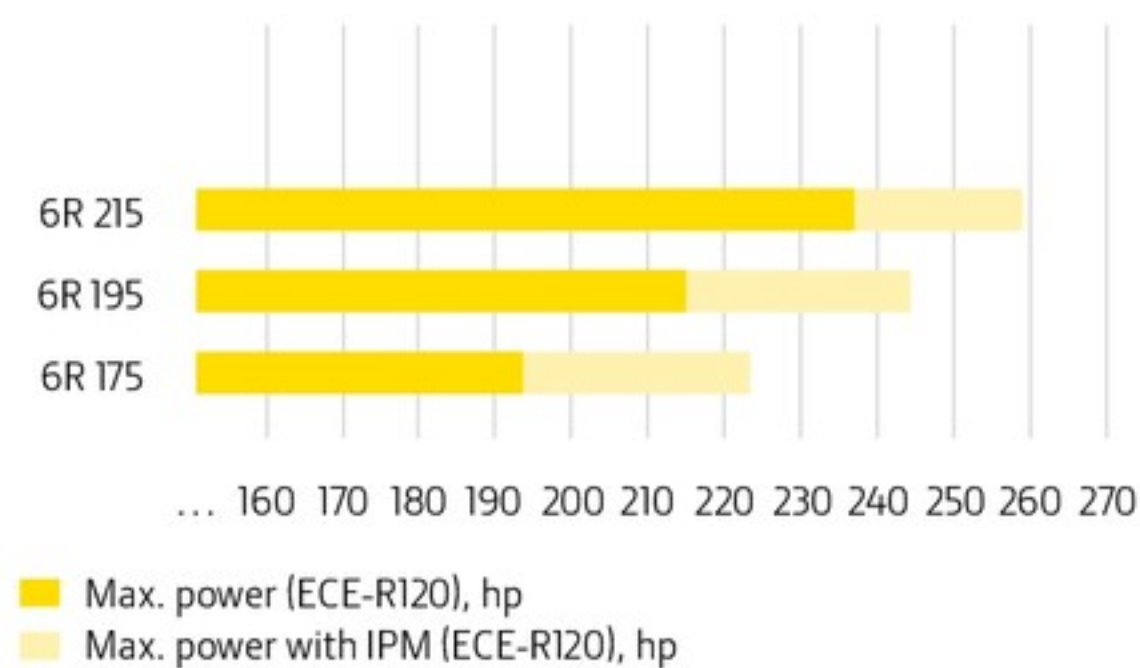
## LARGE FRAME: THE POWER TO PERFORM



\* With 600/70R30 front tyres and 800/70R38 rear tyres

**8,600 KG\*\***

## ENGINE PERFORMANCE



\*\* With average specifications



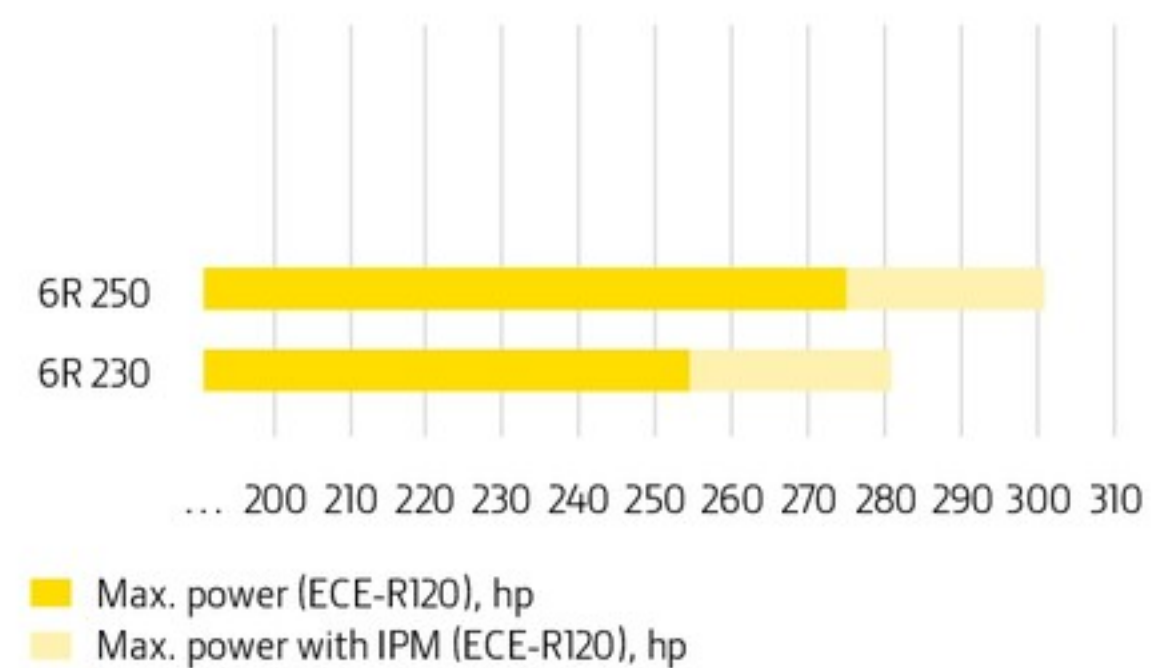
## XTRA-LARGE FRAME: POWERFULLY TOUGH



\* With 600/70R30 front tyres and 800/70R38 rear tyres

**9,500 KG\*\***

## ENGINE PERFORMANCE





# 6R SMALL FRAME TRACTORS

## COMPACT, LIGHT AND POWERFUL

Experience the versatility of this unique high-horsepower 4-cylinder compact tractor. This true front loader expert features our Dynamic Weighing System so that you'll enjoy loading your feed wagons faster and with more precision than ever.

***"THE JOHN DEERE 6R 150 IMPRESSED US WITH ITS LOW DIESEL CONSUMPTION AND VERY GOOD PERFORMANCE CHARACTERISTICS."***

PROFI 02/2023 (WWW.PROFI.DE)

## ENGINES

	6R 110	6R 120	6R 130	6R 140	6R 150
Cylinders	4	4	4	4	4
Displacement (l)	4.5	4.5	4.5	4.5	4.5
Max. power (ECE-R120), hp (kW)	121 (89)	132 (97)	143 (105)	154 (113)	165 (121)
Max. power with IPM (ECE-R120), hp (kW)	135 (99)	145 (107)	156 (115)	166 (122)	177 (130)
AutoQuad™ Plus/AutoQuad™ Plus Ecoshift	■	■	■	■	–
AutoPower™	□	□	□	□	■

■ base □ optional – not available



# 6R LARGE FRAME TRACTORS

## THE POWER TO PERFORM

Officially efficient: Contractors prefer these tractors for their outstanding efficiency<sup>1</sup>, top on-road performance, and the rock-solid, comfortable ride in all heavy-duty applications.



## ENGINES

	6R 175	6R 195	6R 215
Cylinders	6	6	6
Displacement (l)	6.8	6.8	6.8
Max. power (ECE-R120), hp (kW)	193 (142)	215 (158)	237 (174)
Max. power with IPM (ECE-R120), hp (kW)	223 (164)	244 (180)	259 (190)
AutoQuad™ Plus/AutoQuad™ Plus Ecoshift	■	■	■
DirectDrive	□	□	□
AutoPowr™	□	□	□

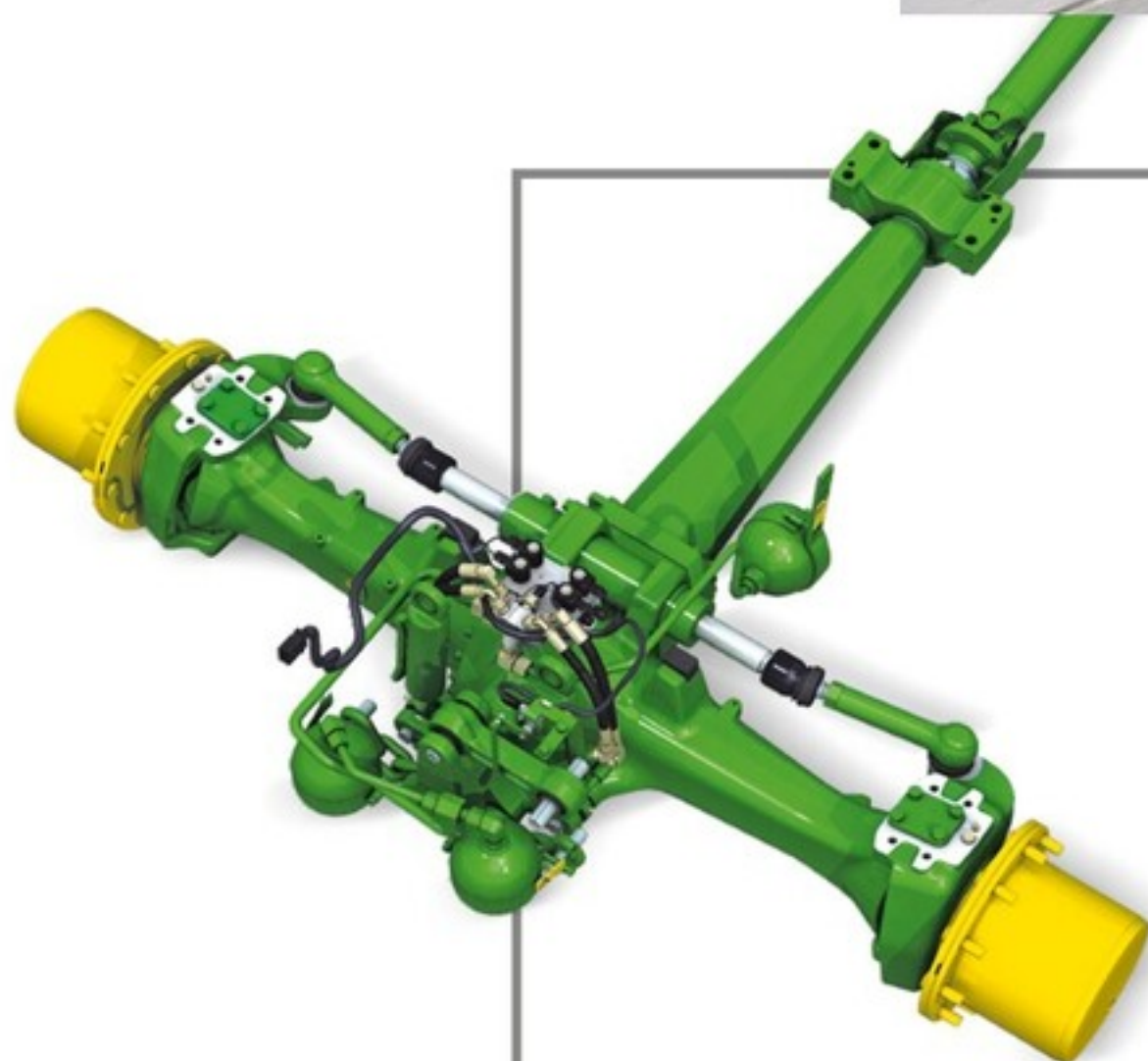
■ base □ optional – not available

<sup>1</sup> As recently confirmed for the 6215R in the Schleppertest 2020 by the Chamber of Agriculture Lower Saxony (Germany)



## 6R 215: OFFICIALLY NO. 1

At only 19.2 l/h, the 6R 215 achieved the lowest Diesel consumption in the test<sup>1</sup> and delivered the quickest acceleration pulling 30-ton trailers<sup>2</sup> – outperforming competitors in the 250 hp test with a cost advantage of at least 2.40 €/h<sup>2</sup>.



## RIDE IN COMFORT

The optional TLS™ Plus is a fully integrated, self-leveling front suspension to increase both transport and field productivity with superior stability, ride, and comfort.



## ELECTRONIC CONTROL

The electronic joystick enables you to reconfigure hitch control, all SCV's, ISOBUS functions and the PowrReverser™ for convenient and efficient one-handed control of essential tractor functions.

<sup>1</sup> Chamber of Agriculture Lower Saxony (Germany) tractor test

<sup>2</sup> "Comparing standard tractors (without Unimog) the John Deere achieved the lowest diesel consumption. [...] It is interesting that, despite the low fuel consumption, the 6R 215 was also the fastest when accelerating with two trailers" – Chamber of Agriculture Lower Saxony (Germany) Tractor Test 2020; [www.lwk-niedersachsen.de](http://www.lwk-niedersachsen.de)



# FARM SMART, PROFIT MORE

## ALL INCLUSIVE FOR A FAST START

John Deere Precision Ag Technology is easy to use and helps you plan, monitor, execute and analyse every stage of your farming operation. Guidance solutions, automation systems and site-specific farming create many opportunities to improve your farming efficiency while boosting your sustainability and profitability.

With the optional StarFire™ 7000 receiver, the G5™/G5<sup>Plus</sup> CommandCenter™ and JDLink™ connectivity, the 6R has everything you need for a quick start with precision agriculture already on board in base model. Add the free John Deere Operations Center™ and you are ready to go.



### NEW G5™ AND G5<sup>Plus</sup> COMMANDCENTER™

The G5™ and G5<sup>Plus</sup> CommandCenter™ bring you full HD resolution, additional memory, increased processing power and are among the most advanced displays available.

Already larger than its predecessor, the John Deere G5™ CommandCenter™ features a 10.1" screen. At a massive 12.8", the G5<sup>Plus</sup> CommandCenter™ offers about 35% more visual space and comes standard with AutoTrac™ and Section Control.

Featuring full AEF ISOBUS compatibility, the G5™ and G5<sup>Plus</sup> CommandCenter™ retain the reliable and familiar user interface from Generation 4 Displays and combine the latest tech with a familiar user interface to deliver an immediate performance boost without the need to re-learn anything.







**5 YEARS OF REPEATABILITY**  
**73% FASTER PULL IN TIME\***  
**17% MORE ACCURACY WITH\* SF-RTK**



### **NEW STARFIRE™ 7000 RECEIVER**

We've just made it easier and more attractive for you to work at higher accuracy levels. Now you not only get a receiver – the Operations Center also gives you an entire suite of guidance & agronomy offboard farm management tools. And thanks to the receiver's ability to communicate with GPS, GLONASS, and the new GALILEO and BEIDOU satellite constellations, you'll enjoy superior signal stability in shaded areas at any signal accuracy level.

While our standard SF1 differential correction signal is suitable for many applications, we didn't stop there. With our new StarFire™-RTK Satellite signal, you benefit from 2.5 cm pass-to-pass accuracy, over five years of precise repeatability, and rapid initialization to acquire full accuracy without the cost of previously required RTK components and activations. Choose from SF1, SF-RTK, Mobile RTK and Radio RTK correction signals depending your requirements.

\* Compared to SF3 Signal



# 1-CLICK-GO-AUTOSETUP

CUT SET-UP TIME BY UP TO 50%

Are you fed up with scribbling notes and wasting time clicking on displays? With 1-Click-Go-AutoSetup, you can reduce in-field setup time by up to 50%: your preplanned work tasks in the John Deere Operations Center™ automatically appear on the G5™/G5<sup>Plus</sup> CommandCenter™ when a machine with JDLink™ connectivity enters the field. All the operator has to do is confirm the details with one click, and they're ready to go<sup>1</sup>.



**SIGN UP FOR A FREE ACCOUNT AT  
OPERATIONSCENTER.DEERE.COM**

Wirelessly send tasks to the tractor via JDLink™ connectivity to make sure the work gets done the way you want – no mistakes, no delays, and always properly documented.



Variable application maps from affiliated software companies



**JOHN DEERE  
OPERATIONS  
CENTER™**



The free John Deere Operations Center™ is the interface to your machines and fields

<sup>1</sup> Machine must be equipped with a Gen 4 or G5 CommandCenter™ or Universal Display (with minimum SU20-3 Software), StarFire™ 3000/6000/7000 receiver, JDLink™ connectivity and a John Deere Operations Center™ account. If not already equipped with a JDLink Modem (4G) a retrofit is required.





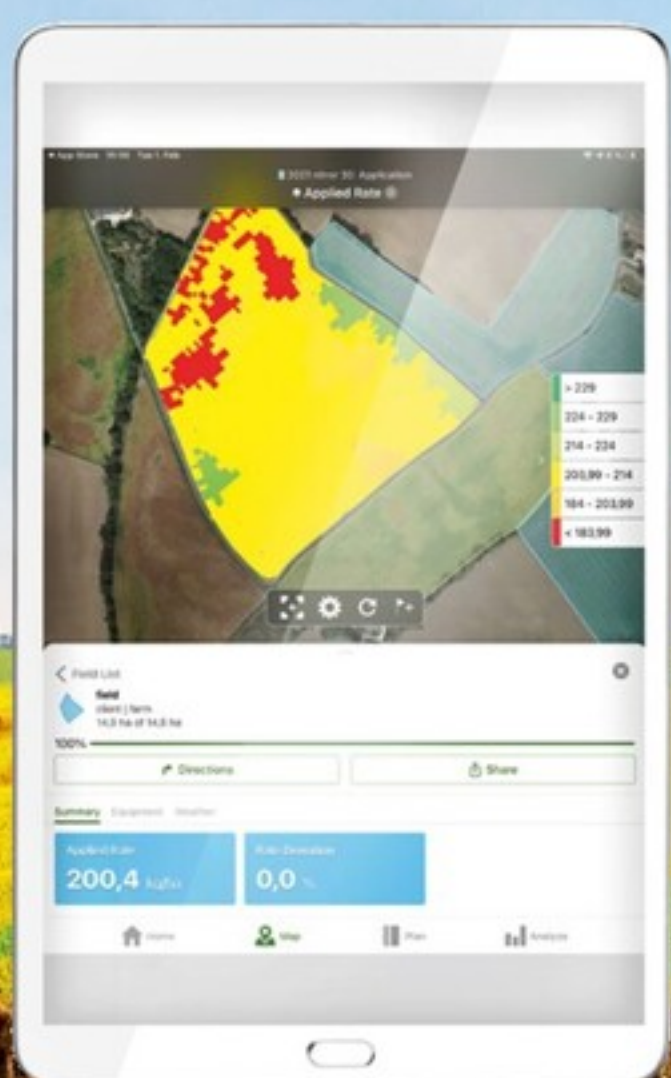
The 6R already has the necessary hardware in its basic configuration and just needs a StarFire™ receiver

Site-specific application with Section Control for up to 255 sections on your implement



# BOOST YOUR YIELD WITH SITE-SPECIFIC FARMING

Put the right seed in the right place at the right depth for successful germination. Then apply exactly the right amount of care. John Deere Precision Ag Technology is your ticket to the benefits of site-specific farming.



## SECTION CONTROL

Reduce overlap and minimise skips to ensure precise crop protectant and nutrient application with Section Control – for up to 255 sections on your implement.



## VARIABLE RATE CONTROL

Optimise your profits with variable-rate application. Increase fertiliser, seeding, and chemical efficiency while boosting yield and reducing costs. Standard with the G5<sup>Plus</sup> CommandCenter™.





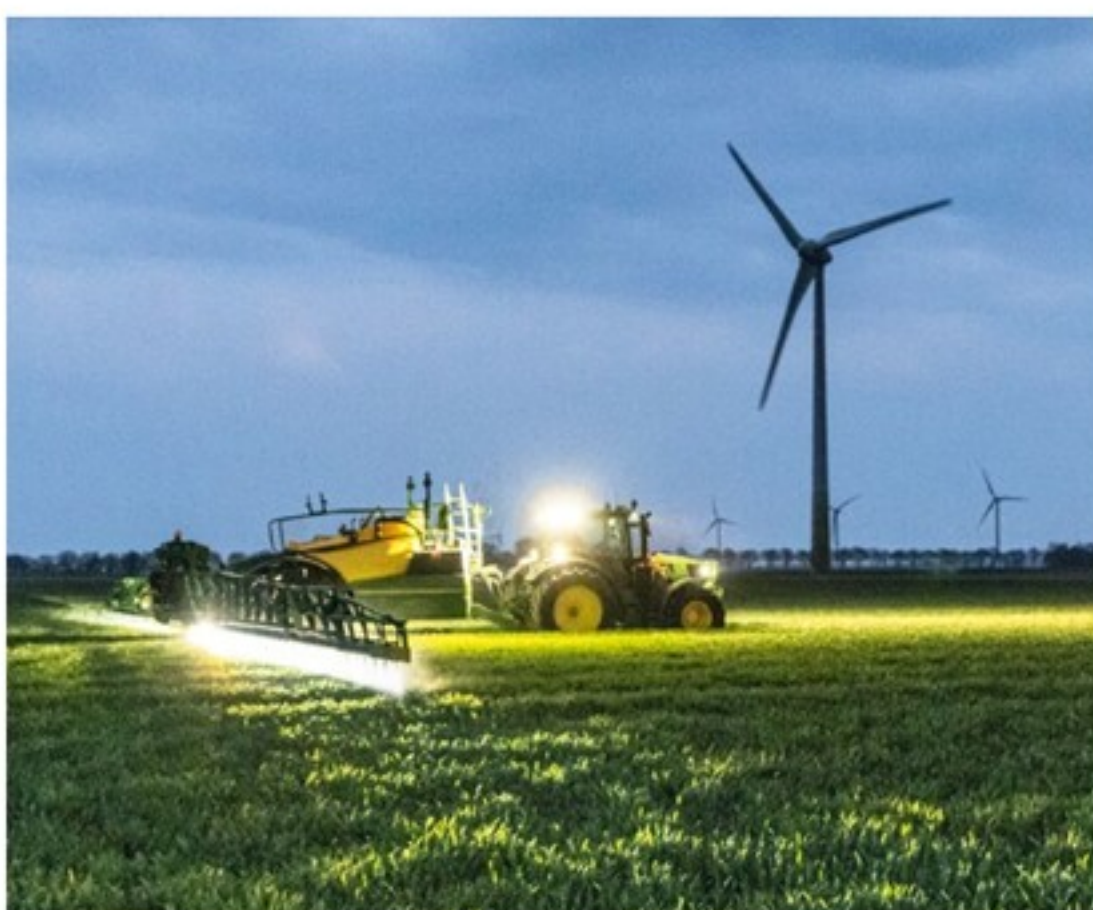
## PLANT/SEED

In your business, every seed counts. With a 6R, you can customise seeding rates for different zones in the field based on a prescription map to boost yield and lower input costs.



## NURTURE

Optimising your yields while managing fertiliser costs has never been easier. Use the 6R's Precision Ag capabilities like Variable Rate and Section Control to apply the right amount of fertiliser at the exact right spot in the field based on a prescription map.



## SPRAY BETTER

Every drop goes where it matters most when you're on a 6R tractor with a John Deere Sprayer. Achieve the highest spraying accuracy on every pass, thanks to our unique PowrSpray™ and Individual Nozzle Control technology.



## KNOW MORE, GROW MORE

Make better decisions based on better information from the John Deere Operations Center™: Powerful management tools let you monitor your machines' productivity and analyse your crops' performance. Supported by dealer specialists, you will improve your farming sustainability and profitability.

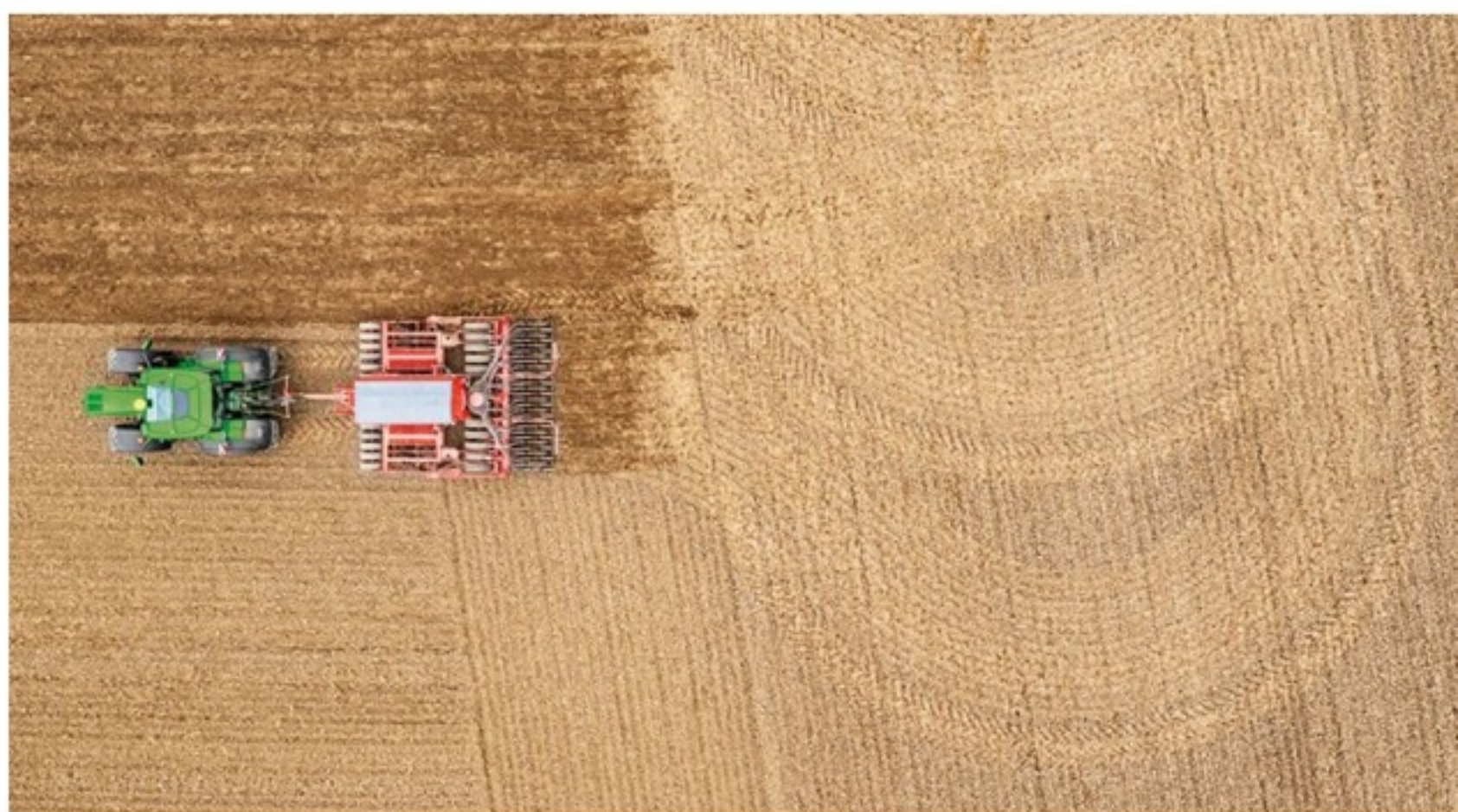


# NEXT-LEVEL AUTOMATION

On top of all premium features, you will also enjoy higher productivity from our advanced licenses like AutoTrac™ Turn Automation, AutoTrac™ Implement Guidance Passive, AutoPath™, MachineSync, and In-Field Data Sharing.

## AUTOTRAC™ TURN AUTOMATION

AutoTrac™ Turn Automation controls the entire headland turn and manages all tractor and implement functions, including forward speed changes and PTO switching. It raises or lowers the hitch or activates SCVs at exactly the right time and position in the field to guarantee perfectly consistent headland crop growth.



Compared to the SF3 signal, the new StaFire™ -RTK Satellite Signal delivers RTK accuracy, 5 year repeatability and fast initialization at lower entry costs and with no additional hardware required.



## MACHINE SYNC

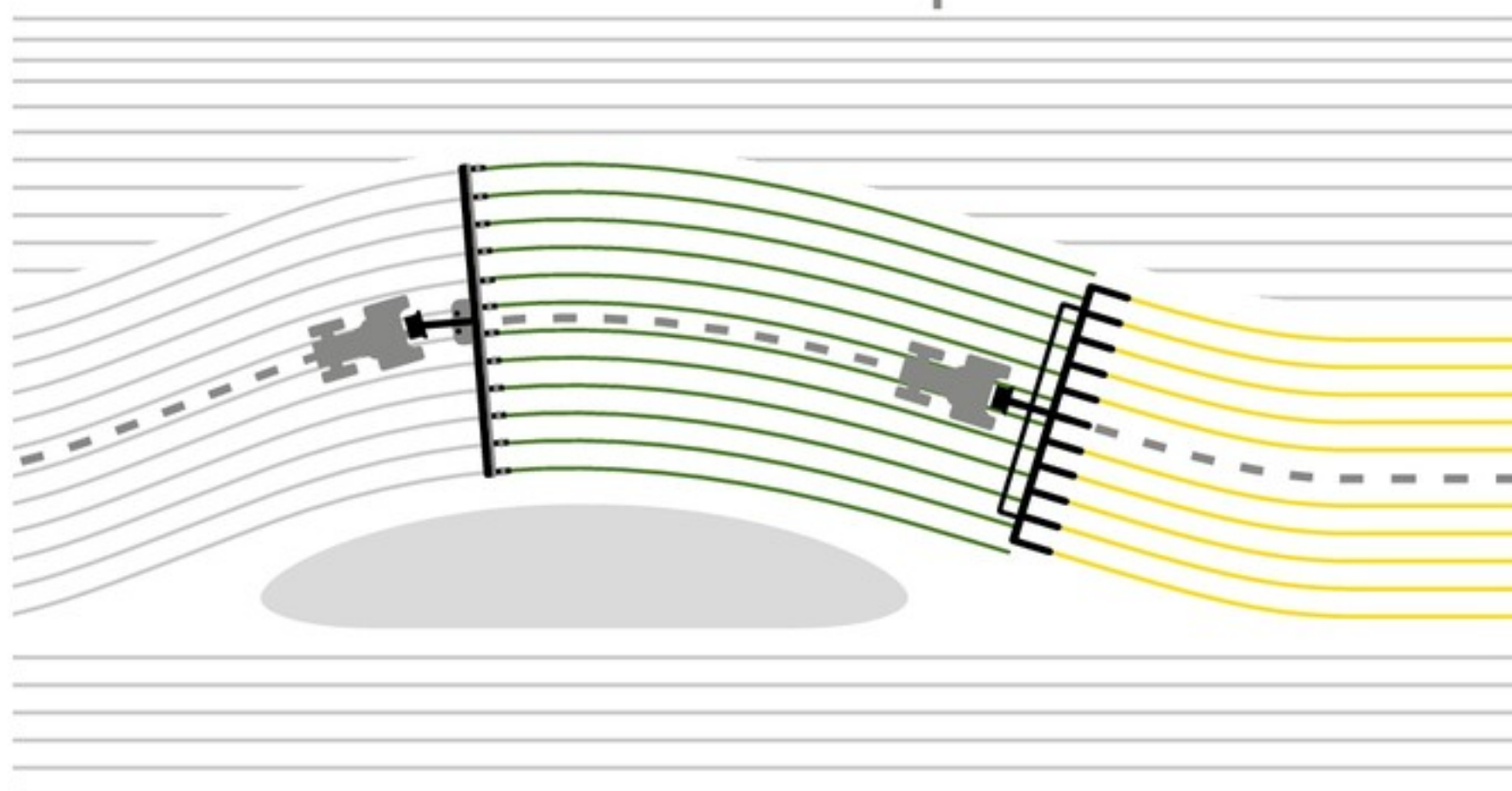
Wirelessly network multiple machines with one machine serving as the leader for precise, spill-free unloading on the go and improved harvest logistics.

## IN-FIELD DATA SHARING

With In-Field Data Sharing you can share maps and guidance lines and review the performance of up to six machines working in the same field.

## AUTOPATH™

AutoPath™ automatically creates guidance lines based on data gathered by the first pass of a strip-till implement or planter. It takes charge of your guidance line management, protecting nutrient investment and helping you make each pass with confidence and precision. Regardless of the width of the implement you use for planting, spraying, or harvesting, AutoPath™ ensures the tyres will always follow the planted rows and stay off the crop.



## AUTOTRAC™ IMPLEMENT GUIDANCE

Prevent pull-type implement drift in rolling terrain to achieve perfect pass-to-pass results without gaps and overlaps. This is an easy-to-install, low-investment package for consistent seed placement and crop growth.







# DO YOUR BEST WORK EVER

## CAB COMFORT

You'll sit down in your premium-suspension dual-motion seat, look around, and feel it: I'm going to get things done here. Better, faster, more efficiently.

***"IN TERMS OF CAB COMFORT,  
JOHN DEERE IS HARD TO BEAT."***

***"69.7 DB(A) IS A BENCHMARK,  
AS ARE FIT AND FINISH AND  
THE HUGE AMOUNT OF SPACE."***

PROFI 02/2023 (WWW.PROFI.DE)





WITH  
**LEATHER  
PACKAGE¹**



### 1 | **DOORS YOU DON'T SEE**

Our panorama doors don't look like much. That's a good thing. You'll enjoy the unobstructed view through them. A left-hand side B-post version is also available.



### 2 | **STORAGE TO UNCLUTTER YOUR CAB**

Our storage box gives you convenient access to items you want to bring along. Instead of it, we also have a small fridge available that fits the space.



### 3 | **SMARTPHONE HOLDER FOR A SECURE HOLD**

A practical holder for your smartphone always keeps it within reach and secures it safely.

<sup>1</sup> Includes leather seat, leather instructor seat, leather wrapped steering wheel, carpet floor mat and rear window decal





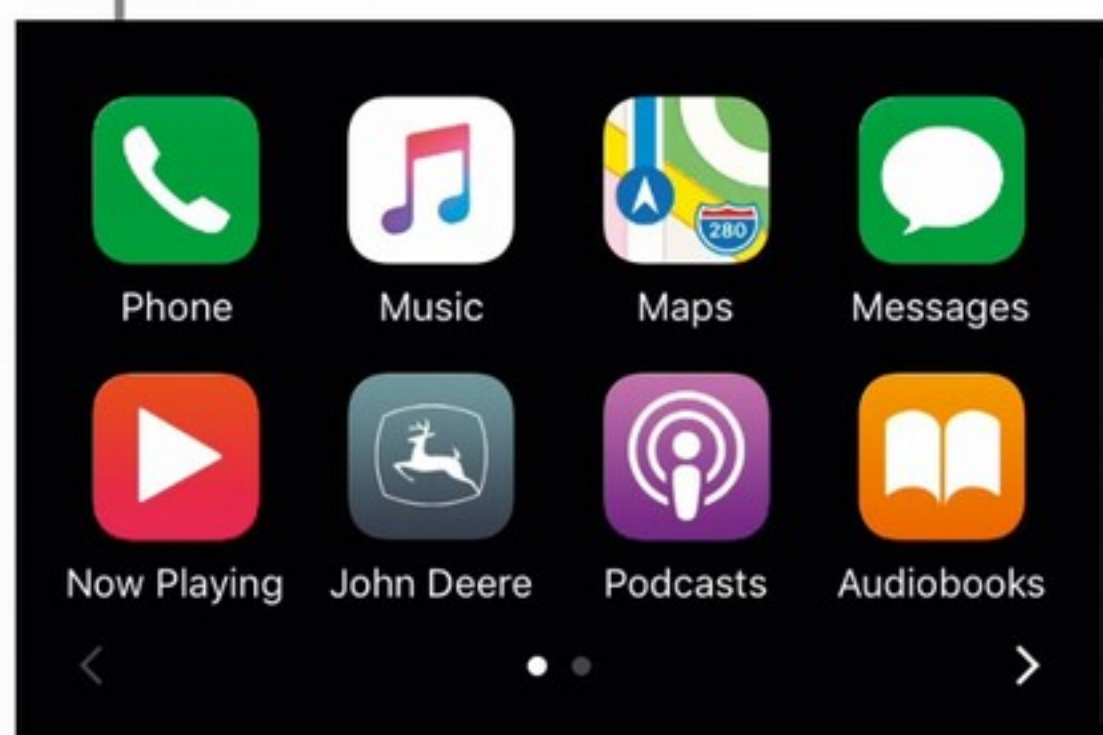
## PERFECTED OUT DOWN TO THE LAST DETAIL

In this cab, you won't miss a thing. The 6.5" high-resolution touchscreen infotainment system delivers a rich media experience with many options while you relish the comfort of the updated Dual Motion Seat.

### AUDIO AND INFORMATION SYSTEM

Conveniently mounted in the headlining you get an abundant choice of entertainment options. The multi-function touchscreen system includes a radio with DAB+, aux input, Bluetooth® with voice control and is business band ready.





androidauto

You can use it as a standalone system or pair it with your smartphone to make hands-free calls, listen to your favourite music or read text messages. It also has Apple Carplay™, a smarter, safer way to use your iPhone when driving that includes Siri voice control.



## SURROUND SOUND QUALITY

Specially created by professional acoustic engineers, the 6R Series sound system features up to six speakers plus a powerful subwoofer. It fills the cab with crystal clear sound that's rich in detail and will bring to life your favourite songs, podcasts and audiobooks.

## DUAL MOTION SEAT

Now with improved suspension, this extra comfortable seat is available as an option. The upper backrest section rotates as drivers turn around, providing back support while enabling enhanced visibility to the rear.





# INTUITIVE CONTROL

## COMMANDARM™

The 6R Series makes sophisticated agricultural technology easy to operate. Everything is within easy reach, and our touchscreen John Deere CommandCenter™ features fluid navigation with shortcuts and context-sensitive help.



**1080P HIGH  
DEFINITION  
35% LARGER  
75% FASTER**

### G5™ COMMANDCENTER™

The 10.1" G5™ CommandCenter™ features a faster processor for shorter boot-up times and delivers your information in extra crisp high definition. All 6R models with right-hand consoles and all 6R 4-cyl. models with CommandARM™ come standard with the G5™ CommandCenter™.

### G5PLUS™ COMMANDCENTER™

As our largest screen ever, the 12.8" G5Plus™ CommandCenter™ offers a lot more space for your information. It comes standard on all 6R 6-cyl. models with CommandARM™, and is available as an option for 6R 4-cyl. models with CommandARM™.

### EASY MENU NAVIGATION

Navigation is easy with a logical menu structure and a comprehensive shortcut bar. With Quick Line you can now record an AB line with just one button press.





## G5<sup>PLUS</sup> EXTENDED MONITOR

The G5<sup>PLUS</sup> Extended Monitor doubles the already massive 12.8" screen of the G5<sup>PLUS</sup>, so you can monitor more functions simultaneously and have direct access to make adjustments when needed. You could, for example, view vehicle control functions on your primary display and Precision Ag applications on the Extended Monitor. Thanks to ISOBUS you enjoy a seamless user interface with no need for an additional display for 3rd party implements.



## ELECTRONIC JOYSTICK

You will appreciate joystick-reversing and joystick-shifting for an optimal loader experience. The joystick is completely reconfigurable and controls all SCVs, front hitch and even ISOBUS functions.

## ISOBUS – AEF CERTIFIED

With Universal Terminal (UT) you can operate your implements, and Task Controller Section Control (TC-SC) allows individual control of up to 255 sections. While TC-BAS enables the documentation of totals in ISOXML data format, TC-GEO adds the capability for geo-referenced ISOXML documentation. AUX-N provides universal compatibility to the tractor joystick and CommandPRO™.



AEF Certified

**ISOBUS**



[www.aef-isobus-database.org](http://www.aef-isobus-database.org)





# LIGHT UP THE NIGHT

## VISIBILITY

### PRE-SETS FOR PRODUCTIVITY

Programming the G5™/G5Plus  
CommandCenter™ for perfect night  
work lighting couldn't be easier.



Nature has never respected normal working hours. Keep your operations productive even at night, with 360° visibility provided by up to 12 cab lights.

Working after dark is nothing new to you. But now you can see your fields in a whole new light. Our factory-installed lighting packages cast the best light to work by all around your 6R Series. Or make working the night shift more productive than ever with our LED lighting packages. They consume less power, deliver brighter, daylight-quality light and go the distance.



**SELECT LIGHT PACKAGE**

- 1 | Six front grill-mounted halogen lights
- 2 | Eight cab roof mounted halogen lights
- 3 | Two beltline mounted turn lights
- 4 | Two fender mounted brake and turn lights

**PREMIUM LIGHT PACKAGE**

- 1 | Six front grill-mounted halogen lights
- 2 | Twelve cab roof mounted halogen lights (ten if combined with panorama roof selected)
- 3 | Two beltline mounted turn lights
- 4 | Two fender mounted brake and turn lights
- 5 | Two fender mounted halogen lights
- 6 | Footsteps lights on both sides

**ULTIMATE LIGHT PACKAGE**

Same number of lights as in premium package. Halogen lights replaced by LED (2 low beam road lights).

**OPTIONAL**

- 7 | Two belt line work lights (Halogen or LED)
- 8 | Two Belt line road lights (H4)
- 9 | Single or dual beacon

Work lights are cleverly integrated into the front, rear and sides of the roofline to prevent damage from low branches.





# POWER WITHOUT LIMITS

## ENGINES

Get all the power you need with less fuel and lower emissions from our renowned 4.5 l 4 cyl. engine or the 6.8 l 6 cyl. engines (Stage V compliant). All our 6 cyl. engines feature extended drain intervals of up to 750 hours.<sup>1</sup>

### ENGINE RESPONSIVENESS

The diesel particulate filter (DPF) not only traps particles but also improves the transient response for better throttle responsiveness.

### COOLED EXHAUST GAS RECIRCULATION (EGR)

Precise amounts of cooled exhaust gases are mixed with incoming fresh air, lowering combustion temperatures. This leads to less NOx output from the engine and more efficient timing, which promotes both fuel and DEF economy.

### SELECTIVE CATALYTIC REDUCTION (SCR)

Diesel exhaust fluid is mixed with engine exhaust gases in the catalyst to further reduce NOx.

### SERIES TURBOCHARGERS

The series turbochargers deliver more low-speed torque and engine responsiveness to meet varying load requirements.



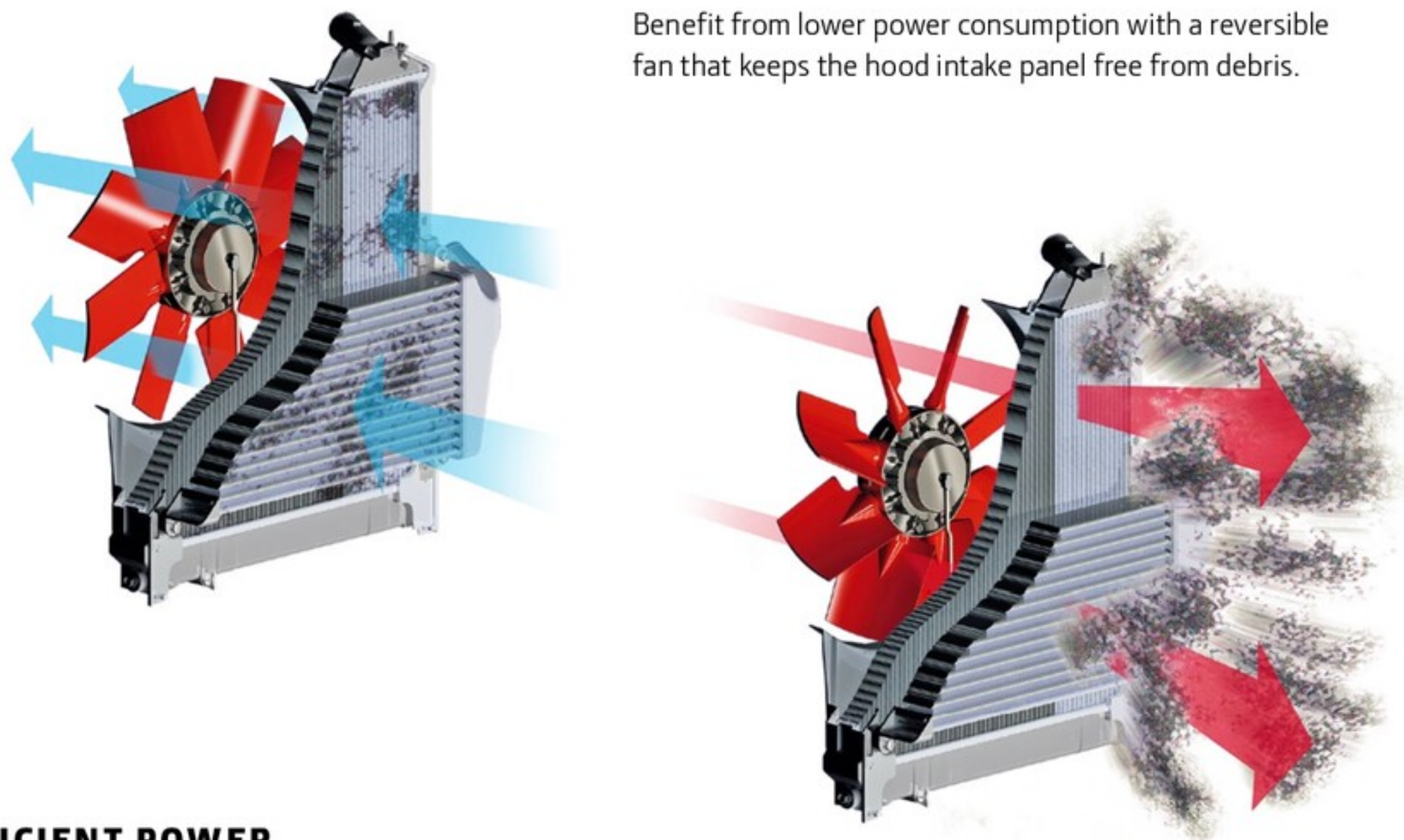
Our 4.5 l PSS engines (6R 110, 6R 120, 6R 130, 6R 140 and 6R 150) use a 2-stage turbocharging system in which the Wastegate turbocharger multiplies the pressure created by a fixed vane turbocharger. This sequential arrangement boosts power to achieve up to 177 hp (max with IPM) in the 6R 150. All 6-cylinder engines feature extended drain intervals of up to 750 hours<sup>1</sup> and hydraulic IPM.

<sup>1</sup> with John Deere Plus-50™ II



## COOL EFFICIENCY

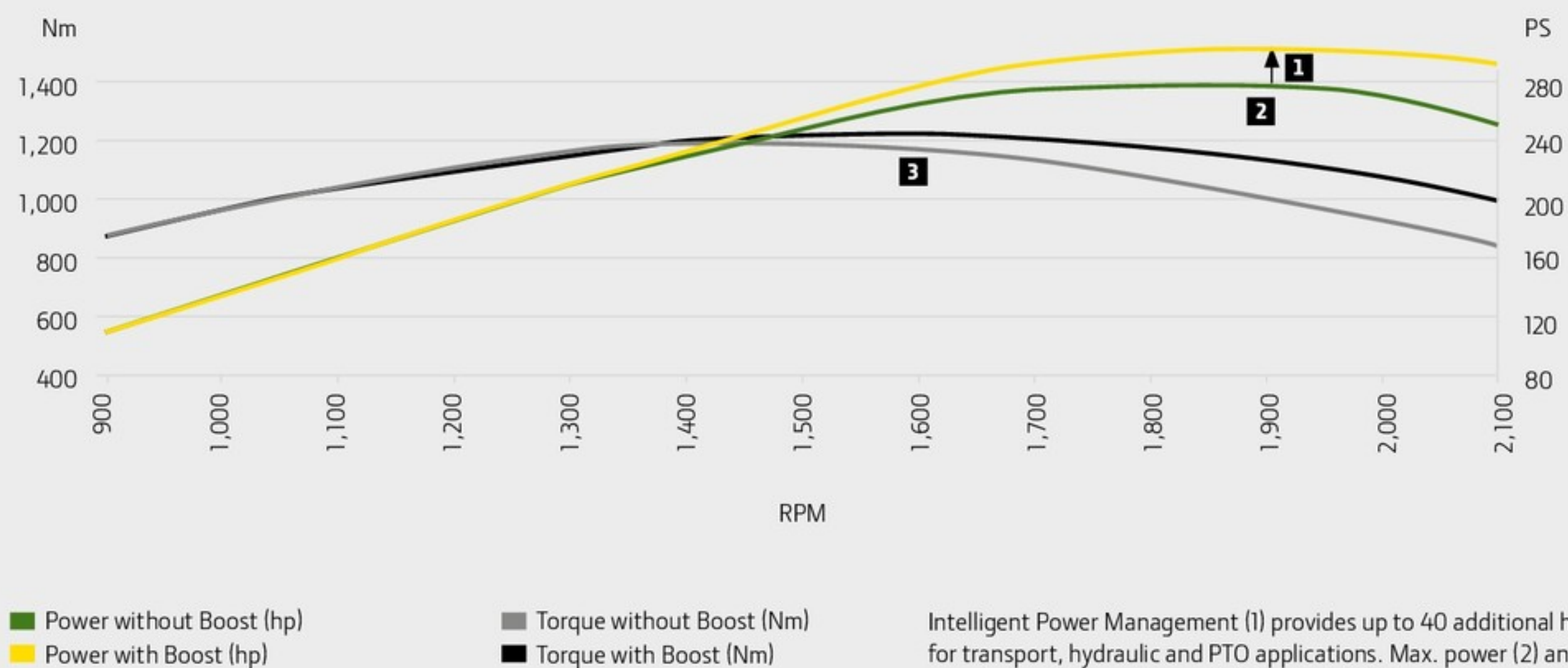
Benefit from lower power consumption with a reversible fan that keeps the hood intake panel free from debris.



## EFFICIENT POWER

The higher power output of our 6-cyl. engines comes from refined 4-valve High Pressure Common Rail technology with injection pressure of up to 2,500 bar. The PVS engine in the 6R 145 – 6R 215 has a Variable Geometry Turbocharger that boosts performance and efficiency across the torque curve. The PSS engines (6230R and 6250R) use a 2-stage turbocharging system in which the VGT multiplies the pressure created by a fixed vane turbocharger.

### THE 6R 250: PURE POWER



Intelligent Power Management (1) provides up to 40 additional hp for transport, hydraulic and PTO applications. Max. power (2) and max. torque (3) are achieved at 1,900 and 1,600 rpm respectively to ensure optimum response with low fuel consumption levels.



# ADVANCED DUAL CLUTCH TECHNOLOGY

## DIRECTDRIVE

Specifically developed for 6R tractors, DirectDrive is an eight-speed, three-range transmission designed and engineered by John Deere for heavy agricultural work.



- 1 | Clutch 1: Shifting of even gears
- 2 | Clutch 2: Shifting of odd gears

***"THANKS TO AUTO CLUTCH,  
IT IS LIKE DRIVING A CAR WITH  
AUTOMATIC TRANSMISSION."***

PROFI (JUNE 2019)



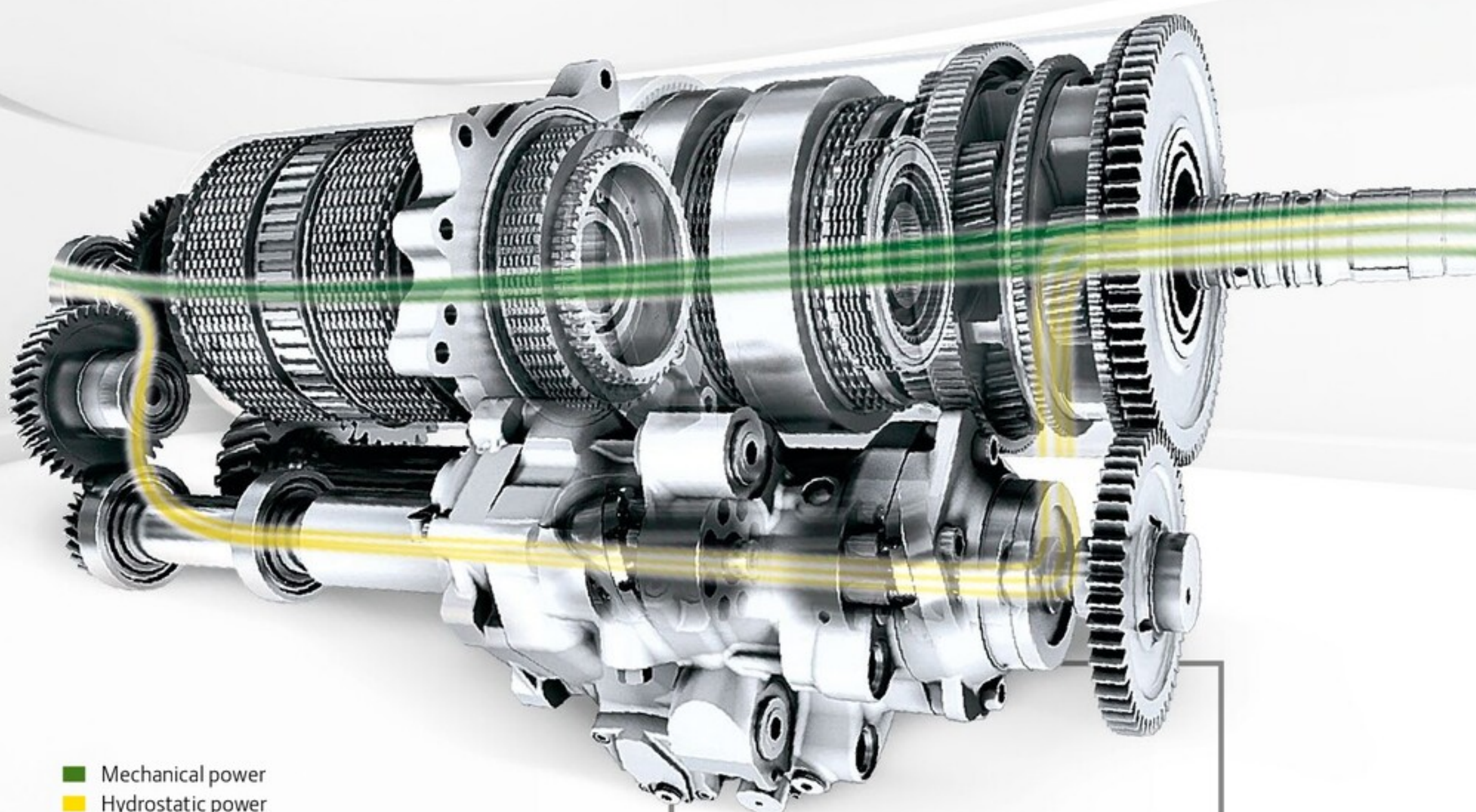




# INFINITE SPEED ADJUSTMENT

## AUTOPOWR™

AutoPowr™ is a hydro-mechanical transmission that delivers stepless and continuous power at speeds between 30 m/h and 50 km/h.



■ Mechanical power  
■ Hydrostatic power

**FINALLY, ULTIMATE  
CONVENIENCE ALSO  
MEANS SUPERIOR  
EFFICIENCY**



## COMFORT

AutoPowr™ maintains the selected speed by automatically responding to changing load conditions.

## FUEL ECONOMY

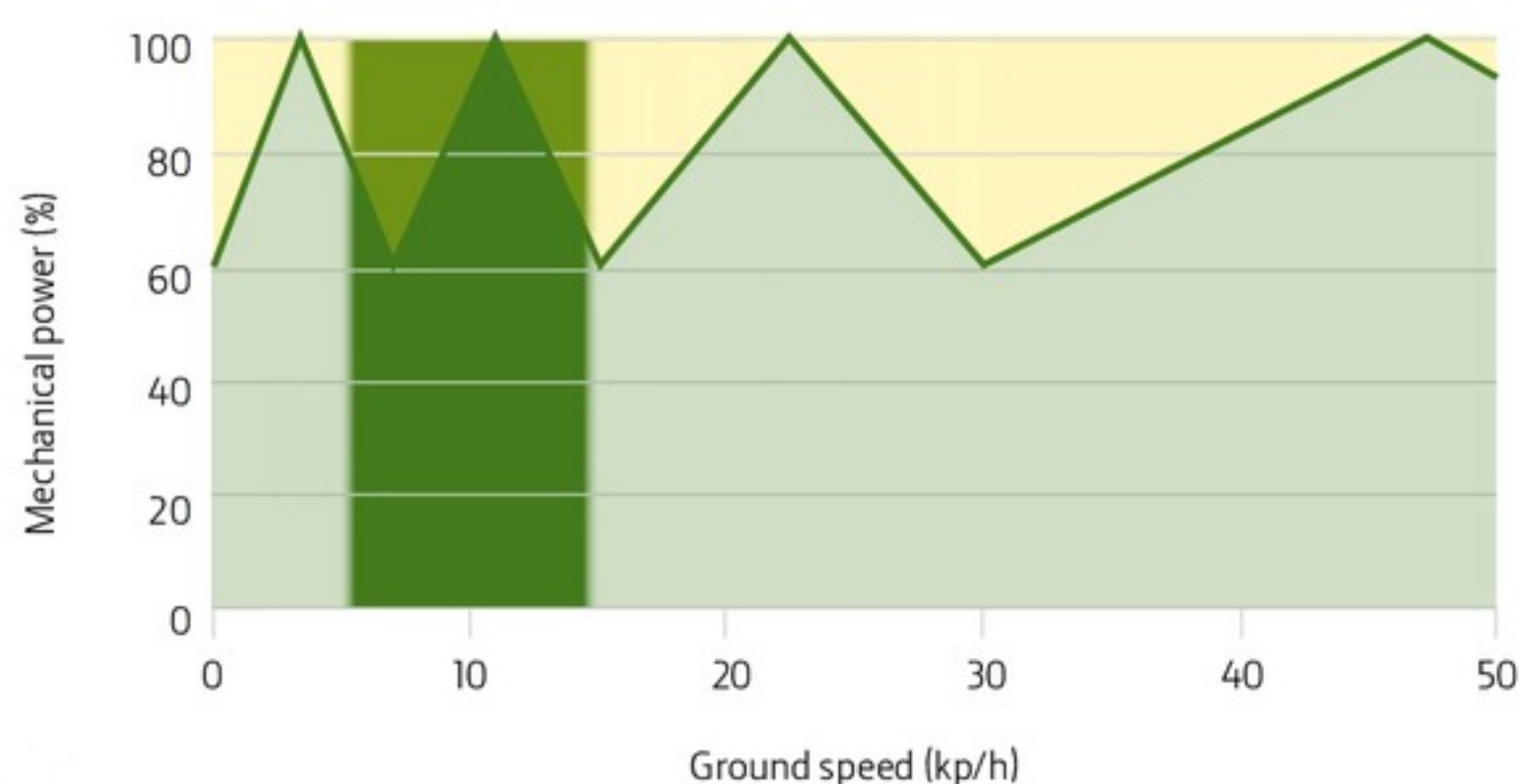
Once running at maximum road speed, engine rpm automatically drops to the minimum level required to maintain that speed – reducing noise and saving fuel. 50 km/h is maintained at 1,630 rpm, 40 km/h at 1,300 rpm with CommandPRO™. AutoPowr™ comes standard in 6R 230 and 6R 250 tractors.

## TWO CONTROL LAYOUTS

With AutoPowr™, superior efficiency comes as standard. Controlled with CommandPRO™ it also delivers ultimate convenience.



- 1 | Set-speed adjusting wheel
- 2 | Speed band two
- 3 | Speed band one



## MAXIMUM EFFICIENCY

AutoPowr™ delivers 100% mechanical power at the following working speeds: 3.5 km/h (heavy draft), 11 km/h (light draft), 22.5 km/h (heavy transport) and 47.2 km/h (light transport). This results in superb transmission efficiency, close to that of mechanical transmissions. In fact, AutoPowr™ is always using more than 60% of the available mechanical power.



# THE ERGONOMIC DRIVER INTERFACE

COMMANDPRO™

***“THE COMMANDPRO™ IS CURRENTLY THE MOST ERGONOMIC JOYSTICK ON THE MARKET. THE JOYSTICK IS GREAT.”***

TRACTOR TEST 2021, CHAMBER OF AGRICULTURE LOWER SAXONY (GERMANY)  
WWW.LWK-NIEDERSACHSEN.DE

***“THE JOYSTICK GETS TOP MARKS FROM DRIVERS FOR ITS EASE OF USE AND FUNCTIONALITY IN DAY-TO-DAY WORK.”***

PROFI 07/2022 (WWW.PROFI.DE)

Mastering the power of the 6R Series tractors is simple with the CommandPRO™ joystick and its 11 reconfigurable buttons. It's the ultimate driver interface for your AutoPowr™ transmission and makes every work day more comfortable, efficient and productive.

## THE ULTIMATE DRIVER INTERFACE

- Set top and zero speeds with one simple push or pull
- Creeping control from 0 to 5 km/h
- Simultaneous active active-pedal joystick driving
- ActiveZero function keeps the output speed actively at 0 km/h until the acceleration command is given
- Control ISOBUS implements with CommandPRO™<sup>1</sup>

## EASY SETUP

Reducing the set-up time for all your applications, the Settings Manager allows you to save machine settings such as engine, SCVs and rear hitch, as well as configuration settings for the electronic and CommandPRO™ joysticks. Instantly access the individual settings for implements or operators, transfer them from one tractor to another, and become more productive from the moment you take the wheel.



<sup>1</sup> only available with AUX-N AEF certified ISOBUS implements





**1 |** Travel set speed buttons 1 and 2

**2 |** Acceleration response button with three settings

**3 |** Travel speed adjustment wheel

**4 |** Activation button

**5 |** 11 Reconfigurable buttons for:

- Front/Rear Hitch
- Front/Rear PTO
- SCV's
- iTEC™
- AutoTrac™
- ISOBUS functions
- Engine set speed



# GREAT RIDE, ALL THE POWER

## RIDE COMFORT

The Triple Link Suspension Plus not only guarantees optimum traction and field performance, it also puts up to 10% more power to the ground.

TLS™ Plus also supports higher operator comfort, reduces operator fatigue and increases productivity, while Variable Ratio Steering improves in-field manoeuvrability.



Variable Ratio Steering off

Variable Ratio Steering on

## VARIABLE RATIO STEERING

Improves operator comfort, requiring less hand movement and less steering effort when turning on the headland or working with a loader in confined spaces. The resulting faster turning of the steering wheel increases hydraulic flow, leading to quicker tyre response. Available for all 6R models.

***“THE HYDROPNEUMATIC CAB SUSPENSION, TOGETHER WITH THE SUSPENDED AXLE, DELIVERS OUTSTANDING RIDE COMFORT.”***

PROFI 02/2023 (WWW.PROFI.DE)



## ENHANCED OPERATOR COMFORT

The intelligent hydro-pneumatic cab suspension (HCS Plus) offers more driving comfort in the field and on the road. Input from the acceleration and TLS™ sensor causes the cab suspension controller to increase or decrease the amount of oil in the shock absorber ram. This semi-active system delivers ultimate comfort in every situation.





### **ADAPTIVE FRONT AXLE**

The self-levelling TLS™ Plus automatically adjusts sensitivity and suspension rate, and synchronises with hitch sensing to compensate power hop under heavy pull conditions.



# GET HITCHED TO PRODUCTIVITY

## HITCH OPTIONS

Experience the fusion of big pulling power with versatility across a broad variety of applications. 6R tractors offer a wide range of hitch, PTO and drawbar options, with all hitch parameters easily controlled from the CommandCenter™.

### REAR PTO CHOICES

An independent 3-speed electrically shifted rear PTO is standard on all 6R tractors. Choose between the 540/540E/1000 and the 540E/1000/1000E – now available for all 6Rs.





## POWERFUL HITCH OPTIONS

6R tractors offer a variety of rear hitch options to complement application needs all the way up to 10,400 kg of pure lifting power.



Automatic and mechanical trailer hitch with 38 mm ball-pin



Piton fix hitch



Ball-type hitch



Forced Steering System



### AUTOMATIC TRAILER HITCH

Makes attaching implements much more convenient compared to manual wagon hitches.

### BALL-TYPE AND PITON FIX HITCHES

These hitches provide optimum traction and driving dynamics for tractor/trailer combinations.

### FORCED STEERING SYSTEM

For even higher versatility, our hitches can also be equipped with a forced steering system to operate large trailers with steering axles (attachment only).



### BIG FRONT HITCH LIFT

Also available: a fully integrated front hitch with up to 5,000 kg maximum lift capacity. Plus, the 6R can also be ordered with an iTEC™ capable front PTO.



# SMARTER HYDRAULICS

## HYDRAULICS AND PTO

There's plenty of power to go around with the closed-centre, pressure and flow-compensated hydraulic system.



### HYDRAULIC IPM

As a supplement to PTO and transport applications, Intelligent Power Management also delivers up to 40 additional horsepower for hydraulic driven implements. The hydraulic IPM keeps tractor wheel speed constant during applications that use power-hungry hydraulically driven implements, like slurry tankers, sprayers, or manure spreaders. Hydraulic IPM has been nominated by the jury of the Elmia Landbruk Innovation Award 2022.



### SCVS APLENTY

In a 6R you get up to six electro-hydraulic selective control valves (SCVs) – with pressure relief lever, logically clustered, and all iTEC™ capable. You can easily control flow rates and times from the cab with the CommandCenter™. For your hydraulic power requirements at the front, the front hitch can be ordered with up to two iTEC™ capable SCVs.





## POWER BEYOND

Power Beyond auxiliary hydraulic connections provide live hydraulic power to equipment. This enables the supply of hydraulic oil to implements with their own control valves or hydraulic motors (for example, on large air seeders or on planters). The system includes one motor return coupler, one flat-face sump coupler, one Power Beyond pressure coupler and one load sense coupler.



## HYDRAULIC PUMPS

Positioned at the upper end of the performance spectrum, the hydraulic pumps of the 6R 230 and 6R 250 deliver an impressive flow of up to 195 l/min. All other models still produce a strong 114 l/min flow, and an optional 155 l/min pump is also available.

	114 L/MIN	155 L/MIN	195 L/MIN
6R 110 – 6R 120	■	–	–
6R 130 – 6R 215	■	□	–
6R 230 – 6R 250	–	–	■

■ base □ optional – not available



SPECIFICATIONS

MODEL	6R 175	6R 195	6R 215	6R 230	6R 250
ENGINE					
MAX ENGINE POWER (ECE-R120), HP (KW)	193 (142)	215 (158)	237 (174)	253 (186)	275 (202)
MAX ENGINE POWER WITH IPM (ECE-R120), HP (KW)	223 (164)	244 (180)	259 (190)	281 (206)	301 (222)
Rated power (ECE-R120), hp (kW)	175 (129)	195 (143)	215 (158)	230 (169)	250 (184)
Rated power with IPM (ECE-R120) @ 2,100 rpm, hp (kW)	215 (158)	235 (173)	255 (188)	270 (199)	290 (213)
Constant power range, rpm	2,100 - 1,500				
Torque rise, percentage	40				
Maximum torque, Nm (at 1,600 engine rpm) – without boost	819	913	1,007	1,077	1,171
Maximum torque, Nm (at 1,600 engine rpm) – with boost	899	982	1,025	1,129	1,212
Rated speed, rpm	2,100				
Manufacturer	John Deere Power Systems				
Type	PowerTech™ PVS			PowerTech™ PSS	
Aftertreatment	Lifetime Diesel Particulate Filter (DPF), Diesel Oxidation Catalyst (DOC) and Selective Catalytic Reduction (SCR) using DEF				
Engine air filter	PowerCore® air filter with pre-cleaning			External A-Post Filter with pre-cleaning	
Aspiration	Single variable geometry turbocharger			Dual turbochargers, variable geometry turbo with fixed geometry turbo in series	
Cylinders/Displacement	6/6.8 l				
Cooling system	Distributed cooling system with temperature controlled viscous fan drive and dedicated fan for charge air cooling			Distributed cooling system with temperature controlled electric fan drive and dedicated fan for charge air cooling	
Fuel injection system & control	High pressure common rail system with up to 2,500 bar injection pressure, electronically controlled				
TRANSMISSION					
AUTOQUAD™ PLUS					
20/20 2.7 – 40 km/h	■	■	■	–	–
20/20 2.9 – 50 km/h	■	■	■	–	–
AUTOQUAD™ PLUS ECOSHIFT					
20/20 2.9 – 40 km/h	■	■	■	–	–
DIRECTDRIVE					
24/24 2.7 – 40 km/h	■	■	■	–	–
24/24 2.7 – 50 km/h	■	■	■	–	–
AUTOPOWR™					
0.03 – 40 km/h	■	■	■	■	■
0.03 – 50 km/h	■	■	■	■	■
AXLES					
Suspended front axle	Triple Link Suspension (TLS™ Plus) MFWD Axle in base; hydro-pneumatic, permanently active, triple link, self-levelling, load adjusting suspension			Braked Triple Link Suspension (TLS™ Plus) MFWD Axle in base; hydro-pneumatic, permanently active, triple link, self-levelling, load adjusting suspension	
Suspension range with TLS™ Plus	100 mm suspension range				
Engagement front differential lock	Self-locking differential; 100% differential lock optional			100% differential lock in base	
Engagement rear differential lock	Electro-hydraulic with oil cooled clutch				
Rear axle	Flange axle or rack & pinion axle				
STEERING					
Type	Hydrostatic, Variable Ratio Steering optional				
HYDRAULIC SYSTEM					
Type	Pressure & Flow Compensated (PFC) system with load sensing function				
Flow at rated engine speed base/option, l/min	114/155			195	
Selective control valves	Up to 6+3				
Power beyond	Optional				
Oil take out capacity with overfill, l	47				
Oil take out capacity with additional oil reservoir, l	55			80	

Air Conditioning Systems contain R134a, a Fluorinated Greenhouse Gas, with a Global Warming Potential of 1430.



MODEL	6R 175	6R 195	6R 215	6R 230	6R 250
3-POINT HITCH – REAR					
Type	Electronic lower link sensing; load & depth control, infinite mix, float				
Category	III/IIIN				
Maximum lift capacity at hooks, kg	9,550			10,400	
Lift capacity through full lift range (OECD 610 mm), kg	5,450			7,000	
Lift capacity through full lift range (OECD 1,800 mm), kg	3,800			4,300	
3-POINT HITCH – FRONT, OPTIONAL					
Type	Front hitch controlled by rear SCV (Select option) or dedicated SCV (Premium or Ultimate option)			Front hitch controlled by dedicated SCV in base	
Category	IIIN				
Maximum lift capacity at hooks, kg	4,000			5,900	
Lift capacity through full lift range (OECD at the hooks), kg	3,300			4,400	
REAR PTO					
Type	Electro-hydraulically engaged, oil cooled, multi-disc design				
Engine rpm at rated PTO speeds with 540/540E/1,000 option	1,950/1,721/1,950				
Engine rpm at rated PTO speeds with 540E/1,000/1,000E option	1,761/1,989/1,756			1,618/2,012/1,659	
FRONT PTO, OPTIONAL					
Type	Electro-hydraulically engaged, oil cooled				
Engine speed at rated PTO speed (1,000), rpm	1.969			1.965	
CAB					
Specifications	ComfortView™ cab with 2 panorama doors or B-Post on left hand side and G5™ CommandCenter™				
Suspension (option)	Adaptive hydraulic cab suspension HCS Plus				
Noise level at operator's ear, dB(A)	71				
Cab glass area, m²	6.11				
Cab volume, m³	3.33				
Display	G5™ CommandCenter™ 10.1" or G5 <sup>Plus</sup> CommandCenter™ 12.8"				
MISCELLANEOUS					
AutoTrac™ Ready	Base			Base	
ISOBUS ready	Base			Base	
CommandCenter™ video inputs	1 input for G5™, 4 inputs for G5 <sup>Plus</sup> CommandCenter™				
Immobiliser	Base				
Trailer brake systems (options)	Hydraulic and/or pneumatic system				
Pneumatic trailer brake system (option)	Hydraulic retarding valve, air drier included				
FARMSIGHT™ SERVICES					
JDLink™				Base	
Remote Machine Monitoring (incl. Expert Alerts)				Base	
CAPACITIES					
Fuel tank (base /option), l	324/421			410/470	
DEF, l	20			25	
Engine coolant, l	28			34	
DIMENSIONS AND WEIGHTS					
Wheelbase, mm	2,800			2,900	
Width × Height × Length, mm	2,550 × 3,160 × 5,050			2,550 × 3,250 × 5,190	
Measured with flanged axle, up to cab roof, from front weight support to horizontal draft link hooks and with max. front tyres / max. rear tyre sizes					
Height from centre of rear axle to top of cab (no beacon light), mm	2,183			2,273	
Turning radius, m	5.62			6.32	
According to ISO789-3 measured for 600/65R30 at 2,050 mm tread setting and 1.6 bar inflation pressure on level ground					
Shipping weight, kg	8,600			9,500	
Measured with average specifications					
Maximum permissible gross weight, kg	13,450			15,000	
TYRE SIZES					
Front tyre sizes, max. available	600/70 R28			600/70R30	
Rear tyre sizes, max. available	800/70R38				



# NOTHING RUNS LIKE A DEERE™

Chances are that when you need us, you need us right then and there. For advice, to solve a problem, or for a part. Reach out, we'll be there with technicians who are factory trained, ready to go to work for you, using only genuine John Deere parts and products. Our commitment to quality doesn't stop at your machine – we also have financing options available that are guaranteed to fit your budget and your plans.



This literature has been compiled for worldwide circulation. While general information, pictures and descriptions are provided, some illustrations and text may include finance, credit, insurance, product options and accessories not available in all regions. Please contact your local dealer for details. John Deere reserves the right to change specification and design of products described in this literature without notice. The green and yellow colour scheme, the leaping deer logo and the JOHN DEERE word mark are trademarks of Deere & Company.