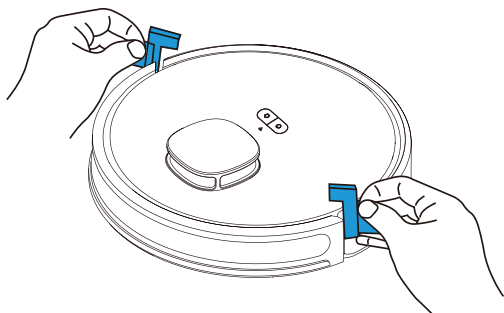


lublu

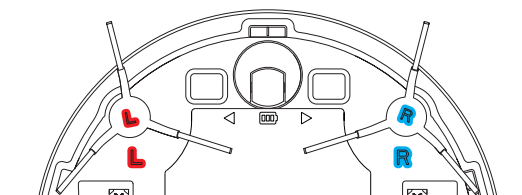
Quick Installation Guide

1



1. Remove the protective strips.

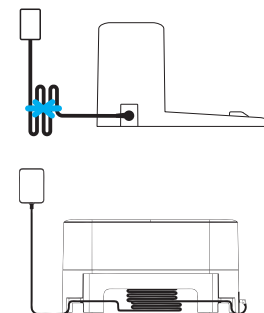
2



2. Install the side brushes.

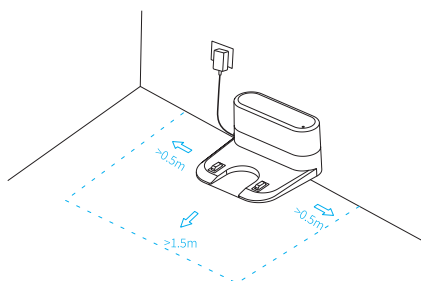
Press the left brush (L) and the right brush (R) respectively into corresponding holes until the "click" sound is heard.

3



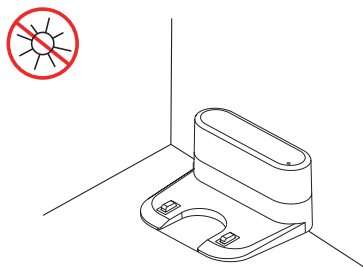
3. Connect the adapter to the charging base and arrange the power cable properly.

4



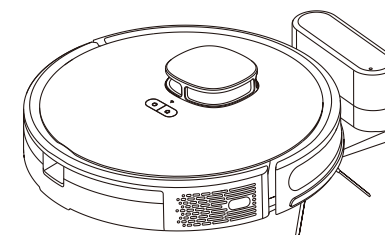
4. Place the charging base in proper position and power on for charging.

5




5. Do not move the charging base arbitrarily and keep it away from direct sunlight.

6

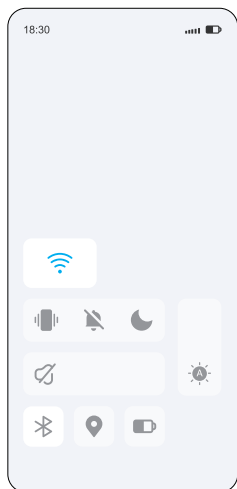


6. Power-On and Charging

Press and hold  to power on. When the indicator is illuminated, place the robot to the base for charging. The voice prompt of "Start Charging" indicates successful charging.

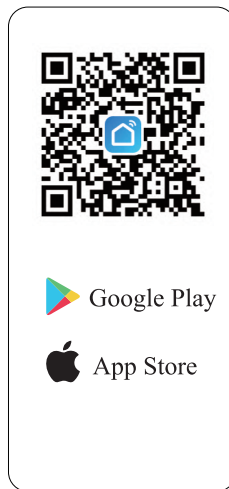
lublu

Connect to the APP



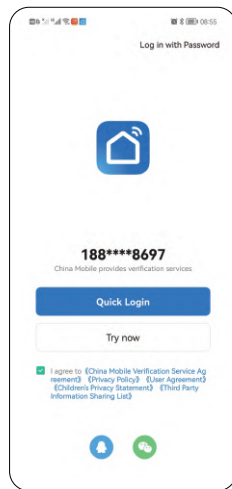
①

Activate the WiFi in phone to connect to 2.4Ghz network.



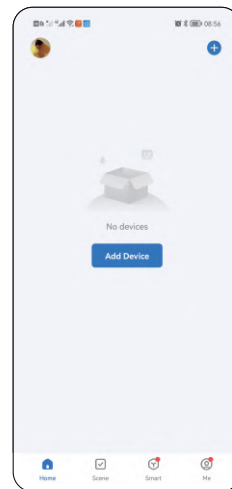
②

Download App: Search "Smart Life" in Appstore or scan the QR code.



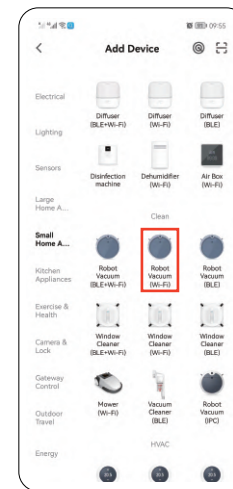
③

Registration: Open the APP and complete the registration.



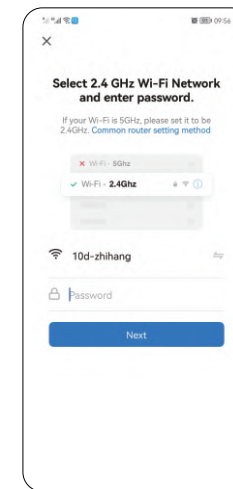
④

Login in the APP and click "Add Device"/+ Button.



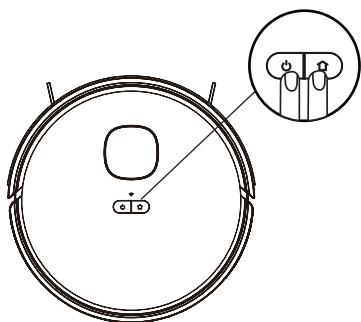
⑤

Choose "Small Home Appliances – Robot Vacuum (Wi-Fi).



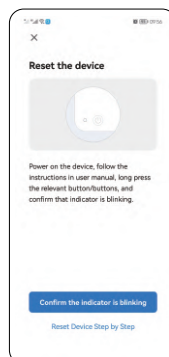
⑥

Enter the password and click "Next".



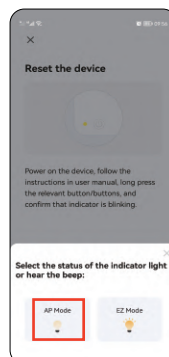
⑦

Press both "Power + Charge" buttons for 3 seconds and the light starts to flash, which means the robot starts network distribution.



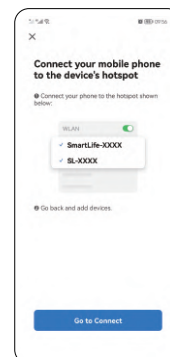
⑧

Click "Confirm the Indicator is Blinking" button.



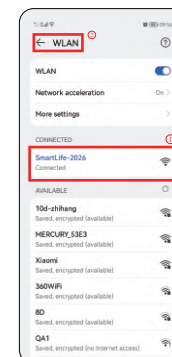
⑨

Select the AP mode.



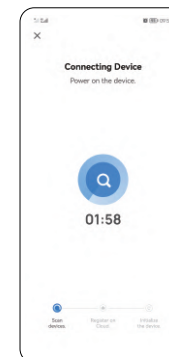
⑩

Click "Go to Connect".



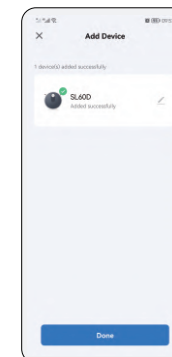
⑪

Then select SmartLife-XXXX and return.



⑫

Wait for the connection.



⑬

Click "Done" to log in APP.