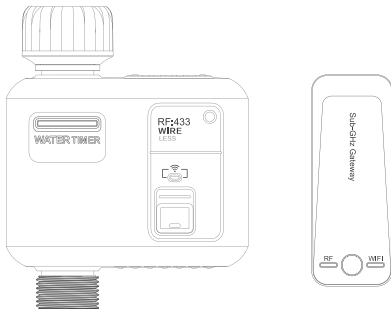


# WIRELESS WATER TIMER

Model: HCT-633-HCG-003



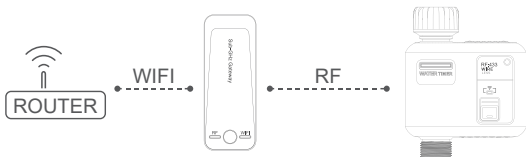
**Ideal for watering:**

lawns, gardens, shrubs, allotments, patios, pots, holiday watering, etc.

## DEVICE INTRODUCTION

---

The **Sub-GHz Gateway** allows smartphone access to the **RF Water Timers** from anywhere anytime with internet access and the **Tuya Smart APP** or **Smart Life APP**.



## DOWNLOAD THE APP

---

1. Search in APP Store / Google Play or scan the QR code of **Tuya Smart** / **Smart Life** (either of them is ok).

Tuya Smart 



Smart Life 



2. Register an account in the APP.

# SUB-GHZ GATEWAY

## 1 RF Indicator



blue led is flashing: add RF devices



blue led is on: in working mode

## 2 WIFI Indicator



orange led is flashing: in pairing mode



orange led is on: offline, lost internet connection



orange led is off: connected internet

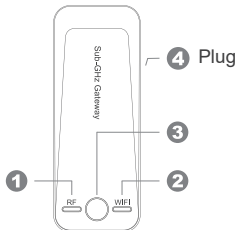
## 3 Gateway Button



hold 5 s: reset the gateway

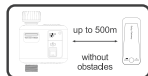
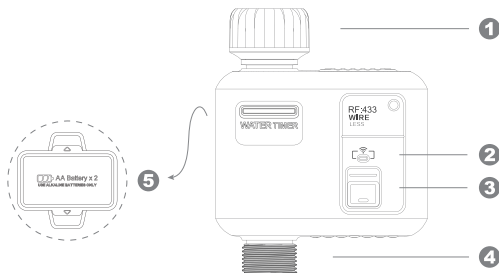


press 1 s: add RF devices



# RF WATER TIMER

- ❶ Water Inlet ..... 3/4 " Internal Thread, with built-in filter
- ❷ Light
- ❸ Button ..... Reset Button / Manual Button
- ❹ Water outlet ..... 3/4 " External Thread
- ❺ Battery Compartment



## ADD THE SUB-GHZ GATEWAY TO APP

---

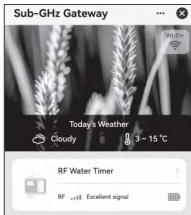
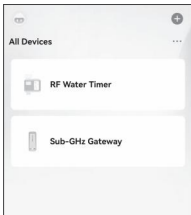
1. Plug the Sub-GHz Gateway to a power source near your WIFI router (2.4 GHz only), the closer the better.
2. The RF indicator light turns on blue and the WIFI indicator light flashes orange slowly, shows the Sub-GHz Gateway is in pairing mode waiting for network connection.
3. Turn on your phone Bluetooth and enter into **Tuya Smart / Smart Life**.
4. Follow the prompts from the app to work through the Sub-GHz Gateway setup process.
  - \* If prompted for connection timeout / failed, please hold the button for 5 sec till the WIFI light blinks slowly again. And also check your password for the WIFI router. Since if it is wrong, the connection will fail too.
5. After finishing the connection successfully, the Sub-GHz Gateway paired will display on **Home** screen and quickly move to the **Sub-GHz Gateway** screen.



6. The RF indicator light changes to flash slowly at the same time, showing it is starting to pair the RF devices.
7. Turn off your phone Bluetooth.

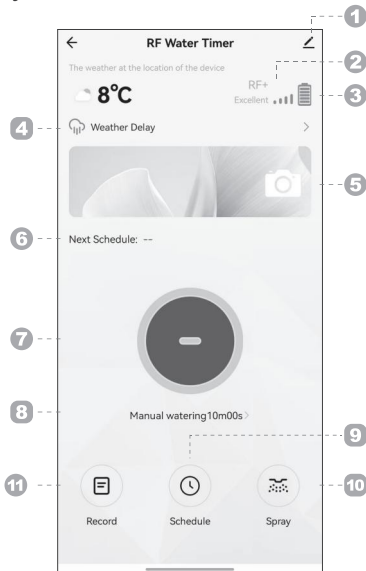
## ADD THE RF WATER TIMER TO GATEWAY

1. Install 2 × 1.5V AA alkaline batteries into the RF Water Timer.
2. The light turns on white and flashes quickly, shows the RF Water Timer is waiting for network connection.
3. Enter into **Tuya Smart / Smart Life**. Tap “**Sub-GHz Gateway**” on **Home** screen.
4. While on **Sub-GHz Gateway** screen, the RF Water Timer will be automatically added successfully in a few seconds.  
Or you can follow the prompts from the app to work through the RF Water Timer pairing process.
  - \* Make sure the RF indicator light on the Sub-GHz Gateway is flashing blue slowly. If no, please press the gateway button for 1 sec.
  - \* Make sure the light on the RF Water Timer is flashing white quickly. If no, please hold the button for 5 sec.
5. After finishing the connection successfully, the RF Water Timer paired will display both on **Home** screen device list and **Sub-GHz Gateway** screen.



## OPERATING INSTRUCTIONS IN APP

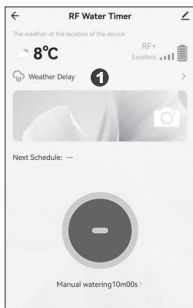
Tap “RF Water Timer” on **Home** screen device list / **Sub-GHz Gateway** screen, and enter into RF Water Timer screen.



- ❶ For additional information about the RF Water Timer, tap “✎”.
- ❷ RF signal. If weak, change the position to closer the gateway.
- ❸ Battery power. If low, change with new alkaline batteries.

#### ❹ Weather Delay:

- ❶ Tap “Weather Delay” to the setting page.
- ❷ Set 1-7 delay, cancel or Smart Weather.
- ❸ Tap “<” on the top left corner.



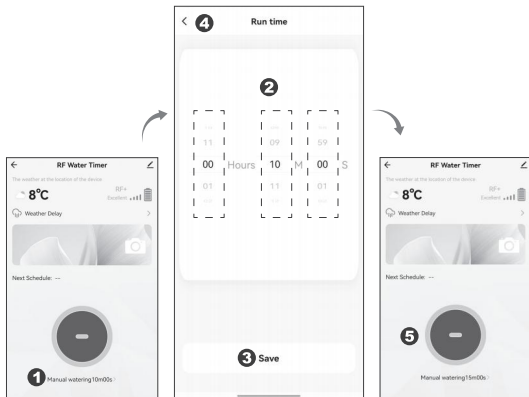
- ❺ Image Display Area
- ❻ Next Watering Notification



**7** Open / Close Button

**8 Manual watering:**

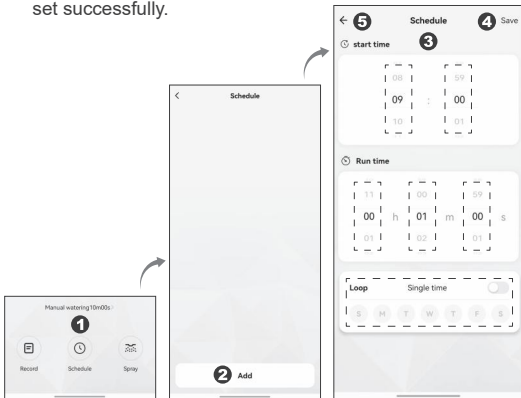
- 1** Tap “Manual watering” to the setting page.
- 2** Use the wheels to set the desired hour, minute and second.
- 3** Tap “Save” to confirm your setting.
- 4** Go back by tapping “<” on the top left corner.
- 5** Tap “⊖” to start the Manual Watering.



\* Manual watering can also be stopped / started at any time using the Open / Close button.

## 9 Schedule:

- 1 Tap "Schedule" and enter the "Add" page.
- 2 Tap "Add" to enter the content setting page.
- 3 Set start time, runtime and loop / single time.
- 4 Tap "Save" on the top right corner.
- 5 Tap "←" to go back to the "Add" page, the on-off button on the right side of the plan will be green, indicating it has been set successfully.



\* Up to 5 plans can be added by setting like above steps.

## 10 Spray:

- 1 Tap "Spray" and enter the content setting page.
- 2 Set start time, end time, spray duration, interval duration and loop / single time.
- 3 Tap "Enable" button into green.
- 4 Tap "←" on the top left conner.



- 11 Record. You can view the watering records of the past 7 days.

## PRECAUTION

---

1. Because of the communication delay, please manually scroll down to refresh every time you enter the APP for data update.
2. Due to the app version updates, the display interfaces may differ from these in the user manual. Kindly follow the instructions in current APP.
3. Please upgrade the version according to the APP prompts and regularly clean up the cache to ensure that the device can work well.
4. When the RF Water Timer is used, the water inlet must be equipped with a filter to prevent impurities from blocking the valve, which may resulting in valve switch failure or water leakage. Please clean or replace the filter regularly.
5. The timer itself does not generate pressure and needs tap water pressure or water source with pressure to work well.
6. The working temperature of the timer is 3°C - 45°C. When it reaches the freezing temperature or the timer is not in use for a long time, please take it off, pick out the batteries, empty the water in the valve tube, and store it in an indoor dry place.



## **AFTER-SALES SERVICE**

---

- In case of device performance failures, 1- year-warranty after sale is included (excluding accessories).
  - Damages caused by unauthorized maintenance, misuse, collision, negligence, abuse, accident, modification, incorrect use of the device or its parts and force majeure are not covered by the warranty.
  - You may contact local distributors or special repair stations with the device invoice and warranty card if your device fails due to quality problems.
- 

### **WARRANTY CARD**

Customer: \_\_\_\_\_ Tel.: \_\_\_\_\_

Contact Add: \_\_\_\_\_

Device Name: \_\_\_\_\_ Model: \_\_\_\_\_

Purchase Add: \_\_\_\_\_ Order Date: \_\_\_\_\_

# DECLARATION ON HAZARDOUS SUBSTANCES IN ELECTRONIC PRODUCTS

PARTS	Hazardous Substances					
	Pb	Hg	Cd	Cr(VI)	PBB	PBDE
Plastic	○	○	○	○	○	○
PCBA	○	○	○	○	○	○
Accessories	○	○	○	○	○	○

This form is compiled in accordance with the requirements of SJ / T11364.

- Indicates that the concentration of the hazardous substance contained in all the homogeneous materials of this part is below the limit requirement of the GB / T26572 standard.
- X Indicates that the concentration of the hazardous substance contained in all the homogeneous materials of this part is above the requirement of the GB / T26572 standard.

This device complies with part 15 of the FCC Rules. Operation is subject to the following two conditions:

- (1) This device may not cause harmful interference, and
- (2) this device must accept any interference received, including interference that may cause undesired operation.

FCC warning:

Any Changes or modifications not expressly approved by the party responsible for compliance could void the user's authority to operate the equipment.

Note: This equipment has been tested and found to comply with the limits for a Class B digital device, pursuant to part 15 of the FCC Rules. These limits are designed to provide reasonable protection against harmful interference in a residential installation. This equipment generates uses and can radiate radio frequency energy and, if not installed and used in accordance with the instructions, may cause harmful interference to radio communications. However, there is no guarantee that interference will not occur in a particular installation. If this equipment does cause harmful interference to radio or television reception, which can be determined by turning the equipment off and on, the user is encouraged to try to correct the interference by one or more of the following measures:

- Reorient or relocate the receiving antenna.
- Increase the separation between the equipment and receiver.
- Connect the equipment into an outlet on a circuit different from that to which the receiver is connected.
- Consult the dealer or an experienced radio/TV technician for help.

The device has been evaluated to meet general RF exposure requirement. The device can be used in portable exposure condition without restriction.

**Manufacturer:**

Ningbo Hanci Electrical Co., LTD.

No.127 -129, Dexing Road, Ninghai County, Ningbo City,  
China. 315600

Made in China

