

Statement

- 1. Thanks for purchasing this product. YESKAMO is committed to providing our customers with reliable security solution and protect your property all times.
- 2. This is the fast setup guide which only helps you familiar with this product quicker, for more information about the product, please refer to the full user manual
- 3. Though we apply all efforts to make the manual complete and accurate, there could still be some discrepancies due to products' timely update. Detailed information is in accordance with the final products.

Safety Caution

- 1. Please use the included power supply with the product to prevent damage to the product
- 2. Please avoid any avoidable obstacles and electromagnetic product between camera and NVR for better signal
- 3. All man-made damages are outside the scope of free warranty

Technical Support

Website: [www.yeskamo.com](http://www.yeskamo.com)  
Email: [usservice@yeskamo.com](mailto:usservice@yeskamo.com) (for US)  
[ukservice@yeskamo.com](mailto:ukservice@yeskamo.com) (for UK)  
US Cell: +1 830 745 5888  
UK Cell: +44 20 3807 4763

1. Product Introduction

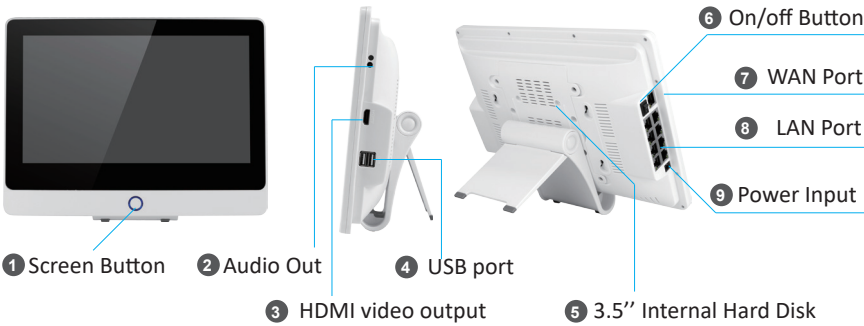
PoE Floodlight Security Camera



- 1 **IR Cut Filter:** auto switch day/night
- 2 **Weatherproof IP66 Housing:** working temperature: -20℃/-4℉ to 60℃/140℉
- 3 **2pcs Floodlight:** will turn on automatically in the darkness when AI sensor was triggered
- 4 **2pcs IR led:** IR leds will automatically switch on at darkness for night vision
- 5 **Microphone:** Pick up audio
- 6 **Speaker:** transmit sound
- 7 **2-Axis Mounting Bracket:** adjust installation angle and vandal-proof inside cable 360° all-round swiveling and 90° up-down adjusting
- 8 **RJ45 Ethernet port:** connect with supplied ethernet cable for power supply and connect to NVR to transfer signal
- 9 **Power-in Port:** back up port for power supply, connect with 12V 1A, do not cut it. (Not included power supply)

**Note:**  
It's better to install the cameras under roof or protections to help extend the life of the device.

Network Video Recorder monitor (Abbreviated as NVR monitor)



- 1 Screen button: turn on/off screen
- 2 Audio Out: Connect to speaker for audio
- 3 HDMI video output: use HDMI cable to connect your another large screen and syncs the video. (HDMI cable not included)
- 4 USB port: for USB mouse control, USB flash drive port for video footage backup and system upgrading
- 5 3.5 inches internal hard drive should be installed inside based on need
- 6 On/off Button: turn on/turn off the NVR after plugging
- 7 WAN Port: connect to router with Ethernet cable for remote viewing
- 8 Lan Port: plug the network cable for each camera into one of these sockets, it will transmit video and power simultaneously
- 9 Power Input: connect the provided **48V 2A** adapter for power supply

2. Connection Instruction



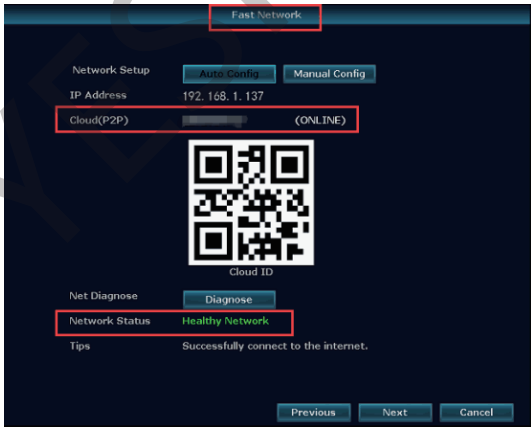
- 1 Check and make sure the NVR monitor power button is turn off.
- 2 Plug the NVR monitor to power socket with provided 48V 2A adapter
- 3 Plug the camera to the NVR monitor LAN Port via the provided Ethernet cable
- 4 Plug mouse the the NVR monitor
- 5 Turn on the NVR pwoer button
- 6 Use Ethernet cable to connect the WAN port of the NVR monitor to LAN port of router,- make the system online if you need remote view on phone app(Skip it if you only need a local view)
- 7 If you need a larger view, connect the NVR to TV/Monitor with HDMI/VGA cable(Not included)

**User name:** admin **Password:** No password (Default leave it blank)  
**Note:**  
1. Please test well the camera to ensure it works before installation.

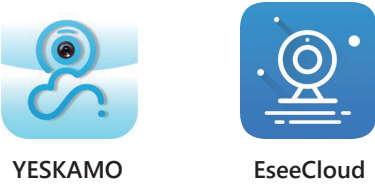
3. Remotely view the cameras on the phone



- 1) **Make sure the NVR monitor is ONLINE status:**  
Connect the WAN port of NVR monitor to LAN port of router with Ethernet cable, then the NVR monitor will be ONLINE.  
Right click the mouse to enter main menu > Fast Network > Cloud (P2P) > ONLINE

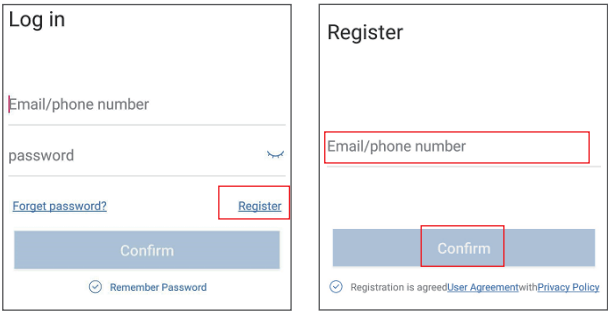


- 2) **Download free app**  
Search free APP "YESKAMO", "EseeCloud" in App store or Google play. The phone app will be updated sometimes, if your phone app menu is different from the menu in user manual, please contact us to get the latest user manual



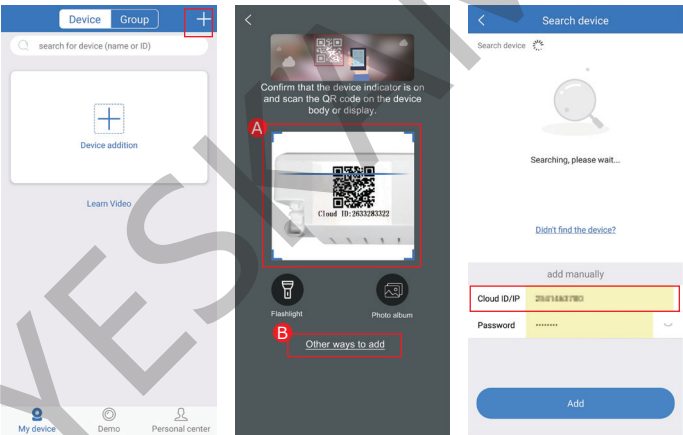
3) Create an account and log in phone app

Register an account with your email address /phone number and password. A verification code will be send via text.

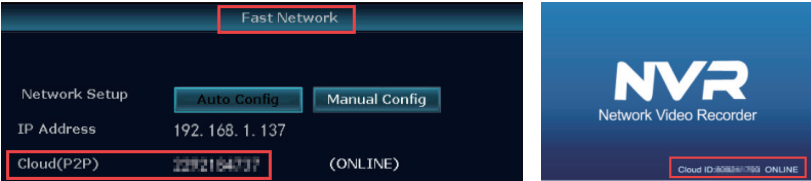


- A: Enter APP>Enter APP > click “+” in the right top corner or center of the phone > Scan the Cloud ID
- B: Enter APP > click “+” in the right top corner or center of the phone > “Other ways to add”> Input “Device Cloud ID”> the default password is no password, click "Add" and "Complete"to finish

4) Add Cloud ID:

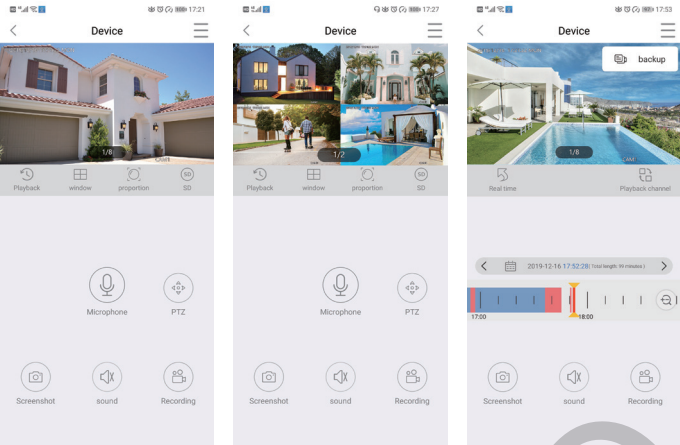


- Cloud ID:
  - A: Right click the mouse to enter main menu> Fast network> Cloud (P2P)
  - B: Right bottom corner of the monitor
  - C: The label on the NVR/Monitor
- Name of device: customize the system name (such as home, office, room...)
- User Name: default is admin (the same as your NVR monitor)
- Password: default is no password, leave it blank/empty (same as your NVR monitor system)



5) Remotely view camera via phone:

Double tap the screen, and you can view camera anywhere anytime.



6) Two way audio communication

Turn on the “speaker” button at top right corner of phone app and you can hear the audio from camera side.  
Tap “microphone” button to enter chat screen, then press and hold “microphone” button and you can talkback to camera side.  
Tap “hang up” button to return preview screen

**Note:**  
Only one user can use the “microphone” at one time, others can use the microphone when the first person hangs up.

4. How to do if I delete a camera in YESKAMO NVR recorder?  
How to add a new POE IP camera?

Keep the camera connect to the NVR via provided Ethernet cable, make sure the LAN port on the NVR is flashing, and the camera video will be live view in 1-2 minutes.



5. What’s the furthest distance can this system support?  
Any requirements to the Ethernet cable?

Generally the distance between the NVR Recorder and cameras should within 80 meters(262ft) and you can use Cat 5 or high level ethernet cable,for those with oxygen-free copper network cable can transmit more stably and furtherly.

6. How to manually turn off the floodlight at night?

This floodlight camera has a built in AI sensor and floodlights. The floodlight will automatic-ly switch on at night when detect any suspicious activities and offer true color videos. But you can customize the IR-Cut mode to turn off the floodlight as below steps:  
Before customizing the IR-Cut mode for a selected channel, please **double click** the selected channel to enter full screen mode.  
Right click mouse to enter main menu> color adjustment> IR-Cut mode: Infrared, Daylight, Night, Full Color, Smart Mode

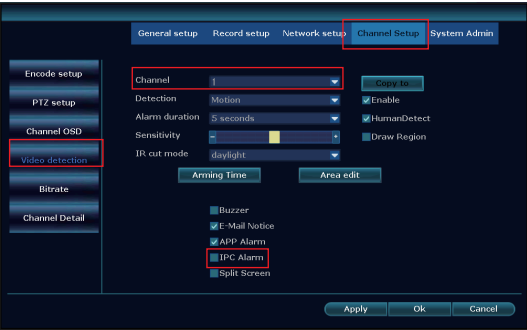


IR Cut Mode	Day	Night
Infrared	Color Picture	Black & White, floodlight will never turn on
Daylight	Color Picture	Totally black once ambient light is insufficient, floodlight will never turn on
Night	Black & White	Black & White, floodlight will never turn on
Full Color	Color picture	Color picture, floodlight always turns on at night
Smart	Color picture	Black & white when No one passby, and floodlight switch on to offer color video once someone passby and and AI activated

**Note:**  
A: The light of floodlight camera lasts for about 20 seconds.  
B: The time interval for floodlight is about 2 minutes.  
C: Only under the “Full color” mode and “Smart” mode, the floodlight will turn on at night.

7. How to turn off Siren Alarm from camera side?

There are 6 types of alert available, Buzzer, E-Mail Notice, phone app notification, IPC Alarm, Split Screen and Drawn Region. You can customize the alerts based on your requirement. Take IPC alarm as example, it sounds a siren alarm from camera side when human motion detected.  
Right click mouse to enter main menu> System Setup> Channel Setup> Video Detection> select Channel and click “Enable” > disable “IPC Alarm” > Click “Apply” to save the setting. Please noted, the default channel is channel "1", revise the channel if you need to setup other channels, such as channel "2-8".



**Note:**  
A: If you choose phone app or email alert for this camera, please make sure your camera system is online, so that you can receive the alerts. For more information, please refer to detailed user manual.  
B: If you want to setup the same alerts for all channels, please repeat above steps or click “Copy to all”.