

MEET | 智宠

MEET

MOME 宠物智能系列产品

智能猫砂自洁舱

用户手册

Auto Self-Cleaning Litter Cabin User's Manual

本产品将自动感应您的爱宠进出，代替您完成一次次繁琐的猫便清洁，并将结团猫砂自动收集在下方的垃圾箱中，垃圾箱满溢时，会提醒你进行垃圾袋更换。绑定APP更可随地远程操控，随时掌握设备状态。

This product will automatically sense your pet in and out, replace you to complete a complexThe litter is cleaned and the litter is automatically collected in the dustbin below.When the garbage can overflows, it will remind you to change the garbage bag. APP binding can be anywhereRemote operation, keep track of equipment status.

感谢您购买 MEET 品牌，MOME智能猫砂自洁舱

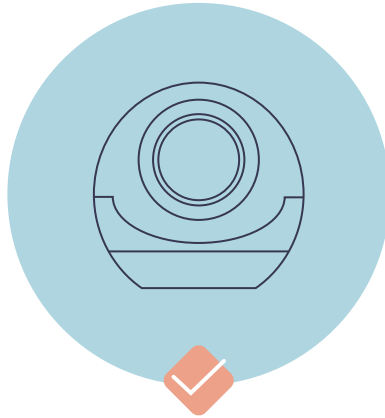
Thanks for your purchaing of our Auto Self-Cleaning Litter Cabin

1	初次使用准备	2
	First time of use	
2	功能组件	8
	Component	
3	使用说明	10
	Direction for use	
4	设备清洁	13
	Cleaning	
5	安全设计	16
	Safety design	
6	注意事项	18
	Caution	
7	产品参数	19
	Product Parameters	
8	品牌介绍	20
	Brand	

CONTENTS

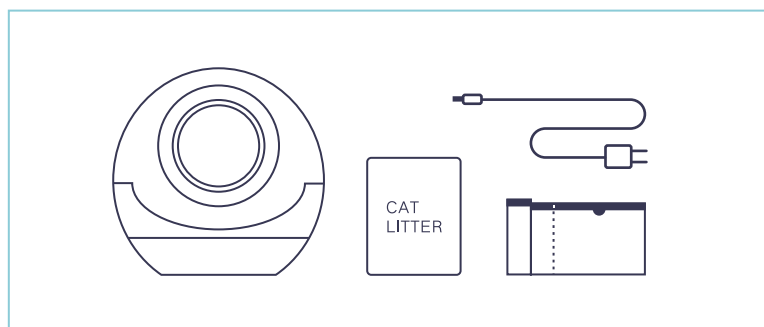
01

初次使用准备
First time of use



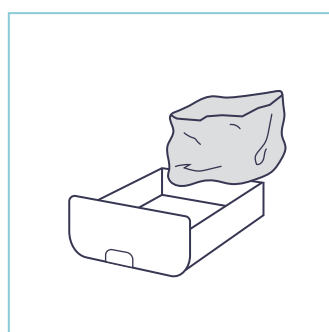
本产品已预装完成，开箱即可使用
This product has been pre-installed

OPEN AND USE IT



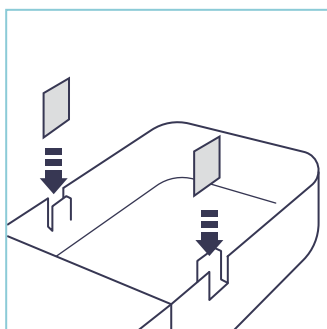
STEP 1

取出已装配好的智能猫砂盆、电源。
自行准备好可使用的猫砂、垃圾袋。
Take out the barbage bin and hang
up garbage bag.



STEP 2

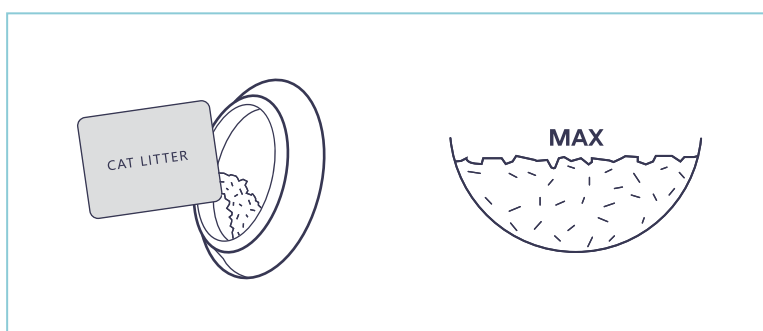
取出底部垃圾箱，
挂上垃圾袋。
Take out the barbage bin
and hang up garbage bag.



STEP 3

插入两片卡扣，将垃圾袋固定。
完成后请将垃圾箱平整放回猫砂盆底部。

Insert clasp to fix the garbage bag.
Please put back the garbage smoothly
when finished.



STEP 4

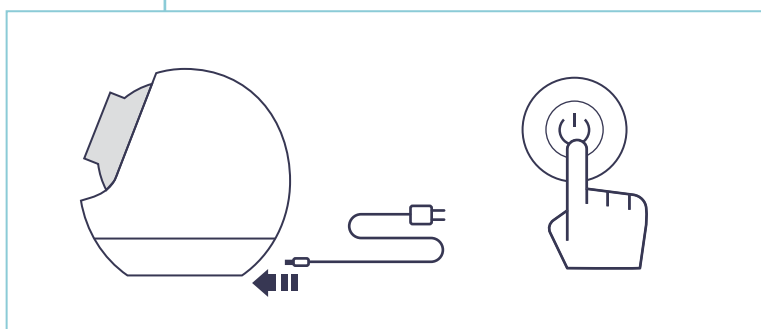
倒入猫砂，保持平整。
经测试，猫砂添加4.5L较为合适。
*开机时设备将初始化重量，请务必
*必先倒入猫砂再开机！

Pour in cat litter to make sure the
surface is smooth. (About 4.5L)
*Be sure to pour in cat litter before
starting the machine!

STEP 5

接入电源，长按3秒开机。

Plug in the power, press 3s to turn on.



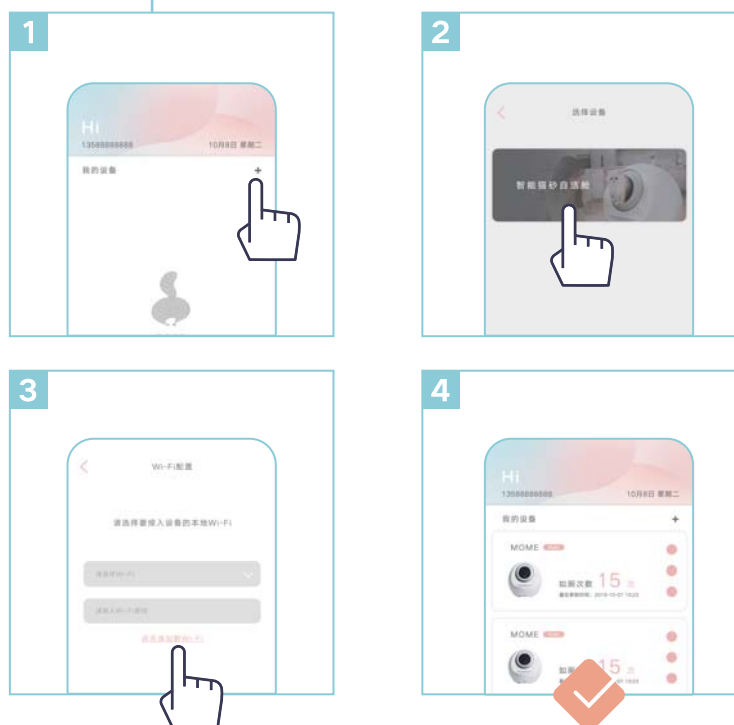
TIPS 小提示

如何处理无法正常开机的情况

- ◆ 首次确认上盖和内桶是否安装到位，因上盖右侧设有安全断电开关，当上盖未安装到位，设备将不被通电。
(上盖可能因为运输过程中颠簸，或是用户从箱子取出时导致盖子错位)
Confirm for the first time whether the upper cover and inner barrel are installed in place, because there is a safety power off switch on the right side of the upper cover. When the cover is not in place, the device will not be powered on. (the top cover may vibrate during transportation, or the cover may misplace when the user takes it out of the box.)
- ◆ 确认电源线是否安装到位和确认电源电压是否符合产品标准，否则请使用相应电压转换器。
Confirm whether the power cord is installed in place and whether the power supply voltage conforms to the product standard. Otherwise use the appropriate voltage converter.
- ◆ 排除这些原因依旧无法正常开机，请直接联系官方售后客服，为您提供专业帮助。
To eliminate these reasons, it still cannot start up normally. Please contact the official after-sales service directly. To provide you with professional help.


STEP 6

下载 MEET 宠物 APP。
Download MEET APP.



1. 开机设备自动处于WiFi匹配状态，显示屏中  图标持续闪烁。或是长按WiFi键3秒进入匹配状态。

2. 打开MEET宠物APP。注册登入后，点击添加设备，确保家中WiFi信号正常，并按照页面提示配置网络。
(请确认wifi为2.4G网络，多频合一和5G网络暂不可用)

若完成上述相应操作后，显示屏中  图标常亮，APP首页出现相应设备及状态，则说明机器已经匹配上相应WiFi可以使用了。

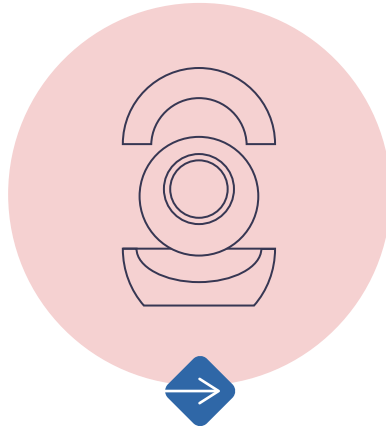
TIPS 小贴士

如何让猫咪习惯使用新的自洁舱

- ◆ 首次使用时，可以将少量原先使用的旧猫砂铺在新猫砂表面，以便猫咪熟悉气味。
For the first use, a small amount of used litter can be laid on the surface of the new litter to familiarize the cat with the smell.
- ◆ 当着猫咪的面进行设备的运转，让猫咪明白这是没有威胁的事物。
Operate the equipment in front of the cat to let them know this is not a threatening thing.
- ◆ 在设备附近放一些食物和小零食进行奖励。
Reward the cat by placing some snacks near the equipment.
- ◆ 也可以和原先的旧猫砂盆放在一起，旧猫砂盆不要去清理，猫咪会喜欢干净的如厕环境，一段时间后，便会使用新的厕所。
The new equipment can be placed with the old one, please do not clean the old one. Cats like clean toilets. They will use the new one after a period of time.

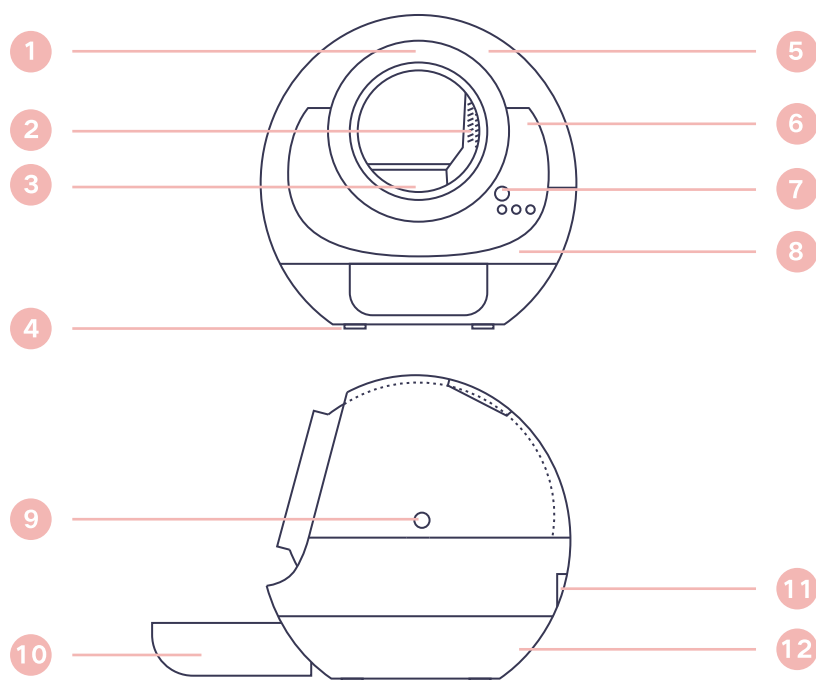
02

功 能 组 件 Component



可以通过阅读功能组件介绍，对我们的产品进行更深入地了解。

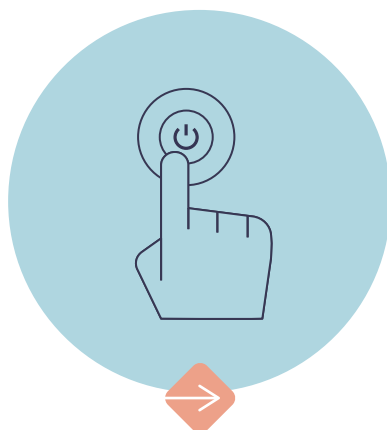
You can learn more about our product by reading Component introduction.



- | | |
|-------------------------------------|-------------------------------------|
| 1 球体舱
Ballroom | 7 按键面板
Key panel |
| 2 猫砂分离网
Strainer | 8 设备基座（不可拆卸）
Base（non-removable） |
| 3 防粘底硅胶
Anti sticking silica gel | 9 上盖卡扣
Top cover buckle |
| 4 重力传感器
Gravity sensor | 10 垃圾箱
Garbage bin |
| 5 设备上盖（可拆卸）
Top cover（removable） | 11 电源接口
Power connection |
| 6 显示面板
Display panel | 12 灯罩
Lampshade |

03

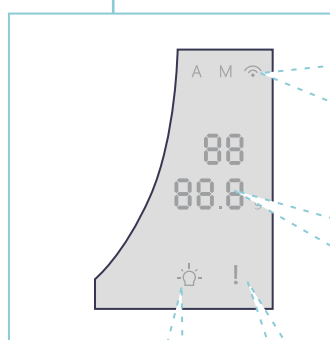
使用说明
Direction for use



为了更快让您和爱宠享受到我们的产品
请耐心等待使用说明。

In order to let you and your pets enjoy
our product faster, please read the in-
structions patiently.

显示面板 Display panel



A 自动模式
Auto

M 手动模式
Manual

 WiFi
WiFi

5
2.8 Kg

上面记录如厕次数
下面显示实时重量

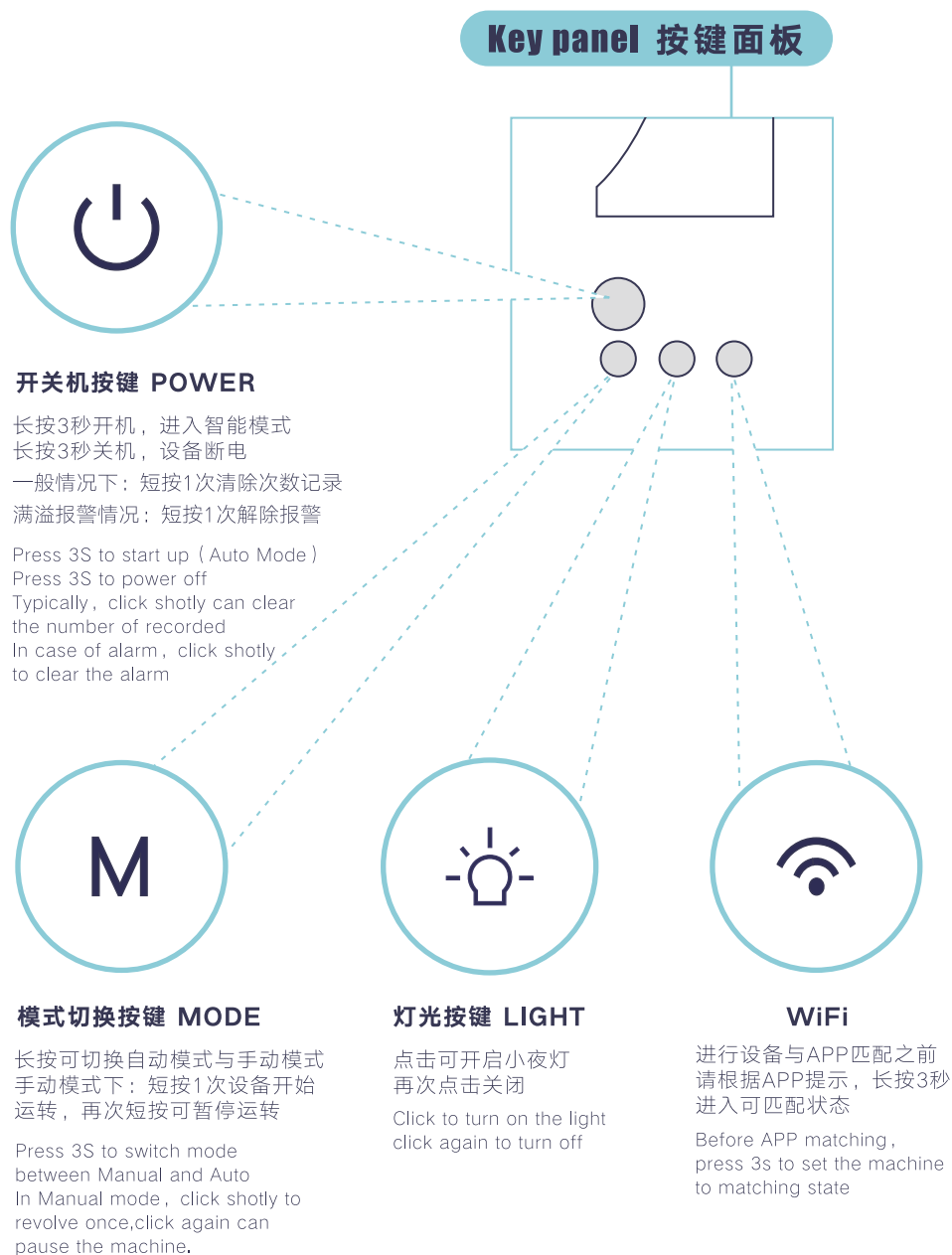
Upside: How many
times does your cat
use the litter cabin
Underside: Real-time
weight



小夜灯状态
Light

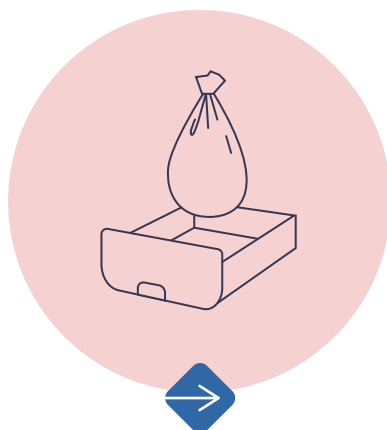


垃圾箱满溢警报
Dustbin overflow alarm



04

设备清洁 Cleaning



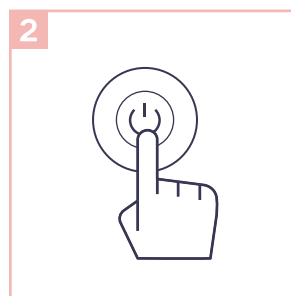
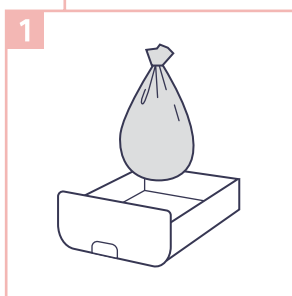
定期为猫砂盆做清理，能够给爱宠营造出最洁净的使用环境。

Clean up the cat litter cabin regularly to give your pets a clean environment.

清理垃圾箱 Clean the garbage bin

当设备感应到垃圾箱满溢时，会发出报警，不再运转，并进行APP推送（面板中“!”亮起，夜灯间隔性闪烁）此时，打开垃圾箱，并更换新袋子，完成后将垃圾箱放回原位，短按1次电源键，解除警报。

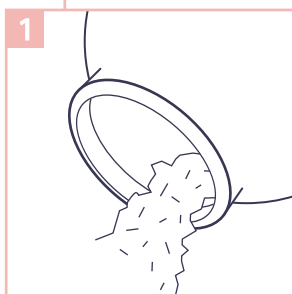
When the dustbin overflows, the machine begins to alarm and pauses. Meanwhile, APP will push the notification to your phone in the same time. Now, take out the garbage bin and change in a new garbage bag. Click the POWER button once to clear the alarm after putting the garbage bin back.



整机清理 Replace all cat litter

猫咪喜欢干净的如厕环境，球舱内猫砂不宜长期使用，建议每30天进行一次全砂更换。

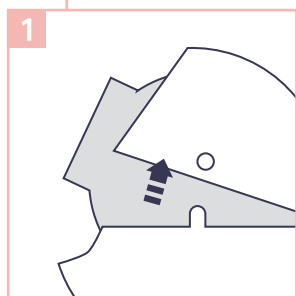
Cats like using clean toilet, we recommended that the whole cat litter need to be replaced monthly.



球舱清洗 Clean the ballroom

如需清洗球舱内部，先打开设备上盖，取出独立球舱，再用清水进行冲洗。球舱不设电路，请放心冲洗。

When it is necessary to clean the inside of ballroom, open the top cover and take out the ballroom. There are no electrocircuits on the ballroom, please rest assured to clean up.



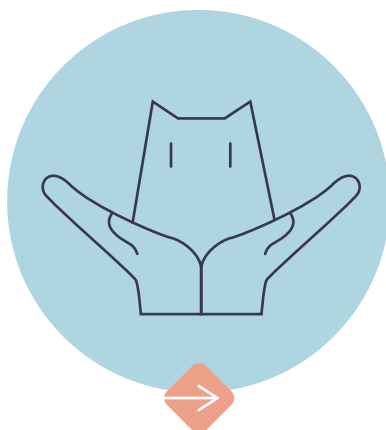
*请务必确保外圈齿轮上无水渍，再放回轨道上。
*请确保球舱内部已充分干燥，再添加新猫砂，以免出现猫砂粘壁的情况。



*Please make sure there is no water on the gear before put it back on the base.
*Please make sure that the ballroom is dry enough to pour new cat litter in it.

05

安全设计
Safety design



了解安全设计，呵护您和爱宠的安全

Safety design will make your pets
more safer

1

猫咪进入设备时暂停运转

设备装有重力感应器，在运转过程中，若感应到猫咪进入（ $\geq 1\text{kg}$ ），会立即暂停运转，直至猫咪离开。

Running paused: The machine will paused if the cat ($\geq 1\text{kg}$) jump on it while it is working.

2

防夹设计

若因特殊情况，漏沙口被异物（团块或爪子）卡住，设备会感应到此情况并进行防夹回转，直到异物排除。

To prevent the clip: When the sand leak is blocked by bodies(crumbs or cat's claws),the equipment will sense this situation and carry out anti-clip rotation.

3

安全电压

采用12V安全电压，防止宠物触电。

Using 12V safety vottage to prevent pet get an electricity shock.

06

注意事项 CAUTION



- 本设备适用于吸水性良好的小颗粒的猫砂，如膨润土猫砂和破碎的豆腐砂。
- 重新开机时会初始化重量，请完成使用前准备环节再开机使用。
- 请将设备放置于干燥、稳固、水平的地面上，地面不宜过软，以免重力传感读数错误。
- 当想给设备移动位置时，请勿直接平推设备，以免造成底部重力感应装置损坏。
- 连接电源之前，请先检查产品所标电压与当地供电电压是否相符。否则，请使用相应电源转换器。
- 请勿将设备放置于高温或潮湿的环境中，避免电路损坏。
- 请勿在设备上放置任何物品或将设备靠墙和紧靠其他物品，以免造成重力传感读数发生偏差。
- 清理完垃圾盒后，请确认安装到位。
- 如遇到无法解决的问题，请及时联系官方专业客服。



- This equipment is suitable for small particles of cat litter, such as bentonite cat litter and tofu crushed sand.
- The weight will be initialized when the rebooted. Please complete the preparation before rebooted.
- Please place the equipment on dry, stable and horizontal ground. The ground should not be too soft to avoid wrong reading of gravity sensor.
- To avoid gravity sensor damage, do not push the equipment directly when moving it.
- Before connecting the power, please check the marked voltage of the product is consistent with the local supply voltage. If not, please use the appropriate power converter.
- Do not place the equipment in a high temperature or humid environment to avoid damage the circuit.
- Do not place anything on the equipment to avoid incorrect readings of gravity sensor.
- After cleaning the garbage bin, please make sure the installation is in place.
- If you have a question about our product, please connect our official professional customer service.

07

产品参数 Product Parameters

产品名称(Name)	MOME智能猫砂自洁舱 MOME Auto Self-cleaning Litter Cabin	机身材料(Material)	PP
产品尺寸(Size)	650*630*660 (mm)	产品重量(Weight)	12kg
额定电压(Voltage)	12V	额定功率(Power)	待机1W/运行状态6W Standby Mode 1W/ Operating Mode 6W
最大承重(Max weight)	25kg	称重器误差范围 (Weight error range)	±0.5kg
猫砂容量(Cat litter capacity)	4.5L		

品牌介绍

MEET | 智宠

MEET 是一支凝聚中国新锐设计力量的团队
我们致力于满足您和爱宠的种种需求
简化养宠方式，优化人宠生活体验
人宠温情，和谐共生。

MEET team is consist of young designers.
We committed to satisfy the needs of
Pets and owners.

BRAND

FCC statement

This device complies with Part 15 of the FCC Rules: Operation is subject to the following two conditions:

1. This device may not cause harmful interference and
2. This device must accept any interference that is received, including any interference that may cause undesired operation.

RF exposure warning :

This equipment complies with FCC radiation exposure limits set forth for an uncontrolled environment. This equipment shall be installed and operated with minimum distance 20cm between the radiator & body.

This device is acting as slave and operating in the 2.4 GHz (2412 ~2462 MHz) band.

Ad Hoc function is supported but not able to operate on non-US frequencies.

Do not use the device with the environment which below minimum -30 °C or maximum over 50°C .

NOTE: This equipment has been tested and found to comply with the limits for a Class B digital device, pursuant to part 15 of the FCC Rules. These limits are designed to provide reasonable protection against harmful interference in a residential installation. This equipment generates uses and can radiate radio frequency energy and, if not installed and used in accordance with the instructions, may cause harmful interference to radio communications.

However, there is no guarantee that interference will not occur in a particular installation. If this equipment does cause harmful interference to radio or television reception, which can be determined by turning the equipment off and on, the user is encouraged to try to correct the interference by one or more of the following measures:

- Reorient or relocate the receiving antenna.
- Increase the separation between the equipment and receiver.
- Connect the equipment into an outlet on a circuit different from that to which the receiver is connected.
- Consult the dealer or an experienced radio/TV technician for help.



本公司保留一切权力



MEET

更多商品请登陆
MEET宠物用品旗舰店

公众号



官方客服

