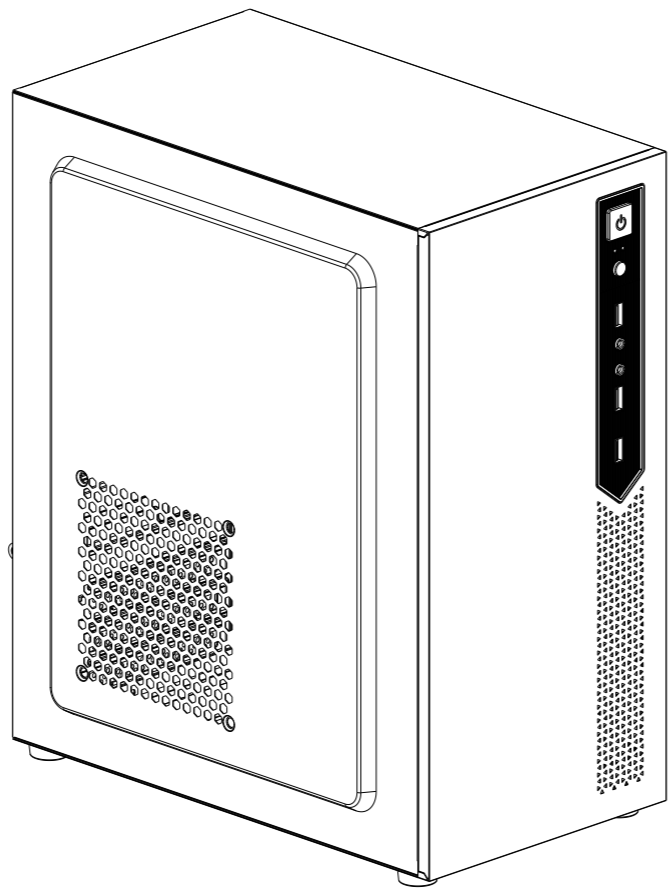


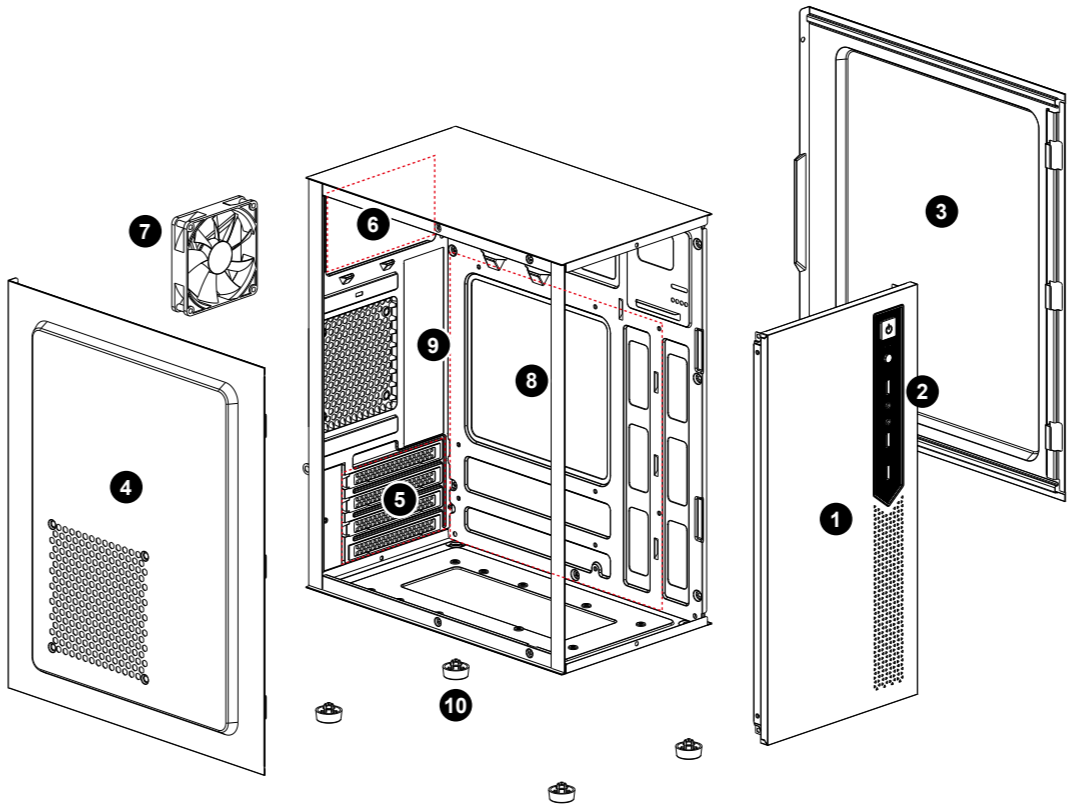


# MARS IE4M

Micro-Tower PC Case



## ▼ Case Layout and Parts Identification



1. Front Panel
2. IO Port Module
3. Right Side Panel
4. Left Side Panel
5. PCIe Slots
6. Power Supply Unit Mounting Hole
7. Rear Fan
8. Motherboard Placement
9. Motherboard Mounting Holes
10. Chassis Pedestals

## ▼ Safety Information

- 1. General Safety Warnings**
  - Always ensure the computer case is placed on a stable, flat surface to prevent it from tipping over.
  - Keep the case away from water, moisture, or high humidity environments to avoid electrical hazards.
  - Do not block or obstruct the ventilation openings to ensure proper airflow and prevent overheating.
- 2. Electrical Safety**
  - Disconnect the power supply before installing or modifying any internal components.
  - Avoid touching internal components directly; always ground yourself to prevent static discharge, which can damage sensitive components.
  - Use only compatible power supplies and cables, ensuring that all connections are secure and free from fraying or damage.
- 3. Handling Precautions**
  - Handle the computer case with care during transportation to prevent physical damage.
  - Use appropriate tools when assembling or disassembling components inside the case to avoid injury.
  - Do not force components into place; ensure they align properly before securing them.
- 4. Fire Hazard Warnings**
  - Ensure all components are properly ventilated and not overheating, as this can be a potential fire hazard.
  - Avoid overloading electrical circuits connected to the computer case to prevent overheating and potential fire risks.
  - Keep flammable materials away from the computer case.
- 5. Child Safety**
  - Keep the computer case and its components out of reach of children.
  - Do not allow children to play with or operate the computer case, especially when it is powered on.
- 6. Cleaning and Maintenance**
  - Unplug the computer case from the power source before cleaning.
  - Use a dry, soft cloth for cleaning the exterior of the case. Do not use liquid cleaners or aerosols.
  - Periodically check and clean the ventilation openings to ensure proper airflow.
- 7. Installation Safety**
  - Ensure that all components are installed correctly and securely before powering on the system.
  - Double-check connections and screws to prevent potential hazards during operation.
  - Follow the manufacturer's guidelines for component installation and ensure compatibility with the case.
- 8. Disposal Instructions**
  - Dispose of the computer case and its components according to local electronic waste regulations.

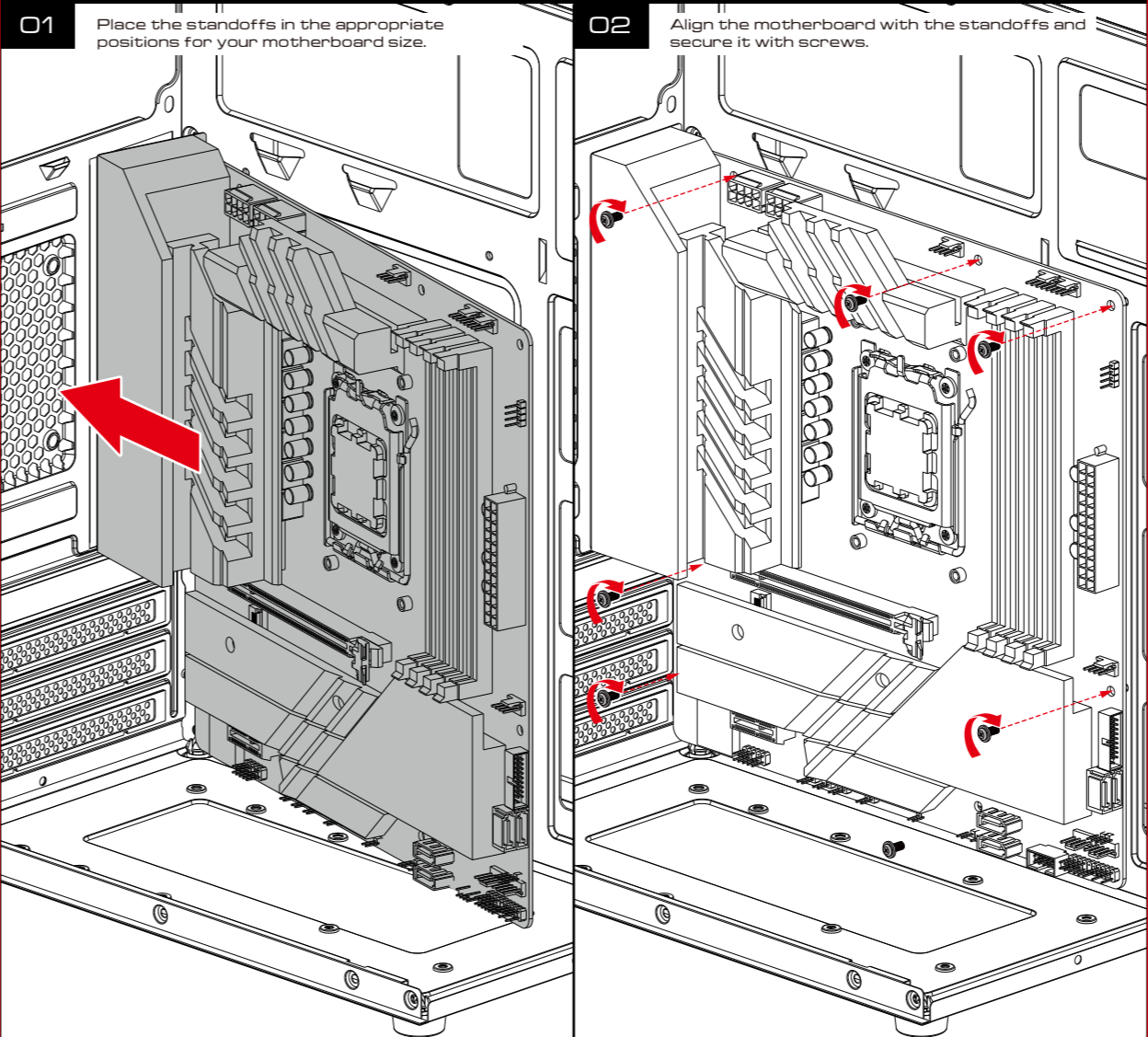
## ▼ Package Contents

1. Gaming Case : MARS E4M
2. Chassis Protection : Styrofoam

## ▼ Specification

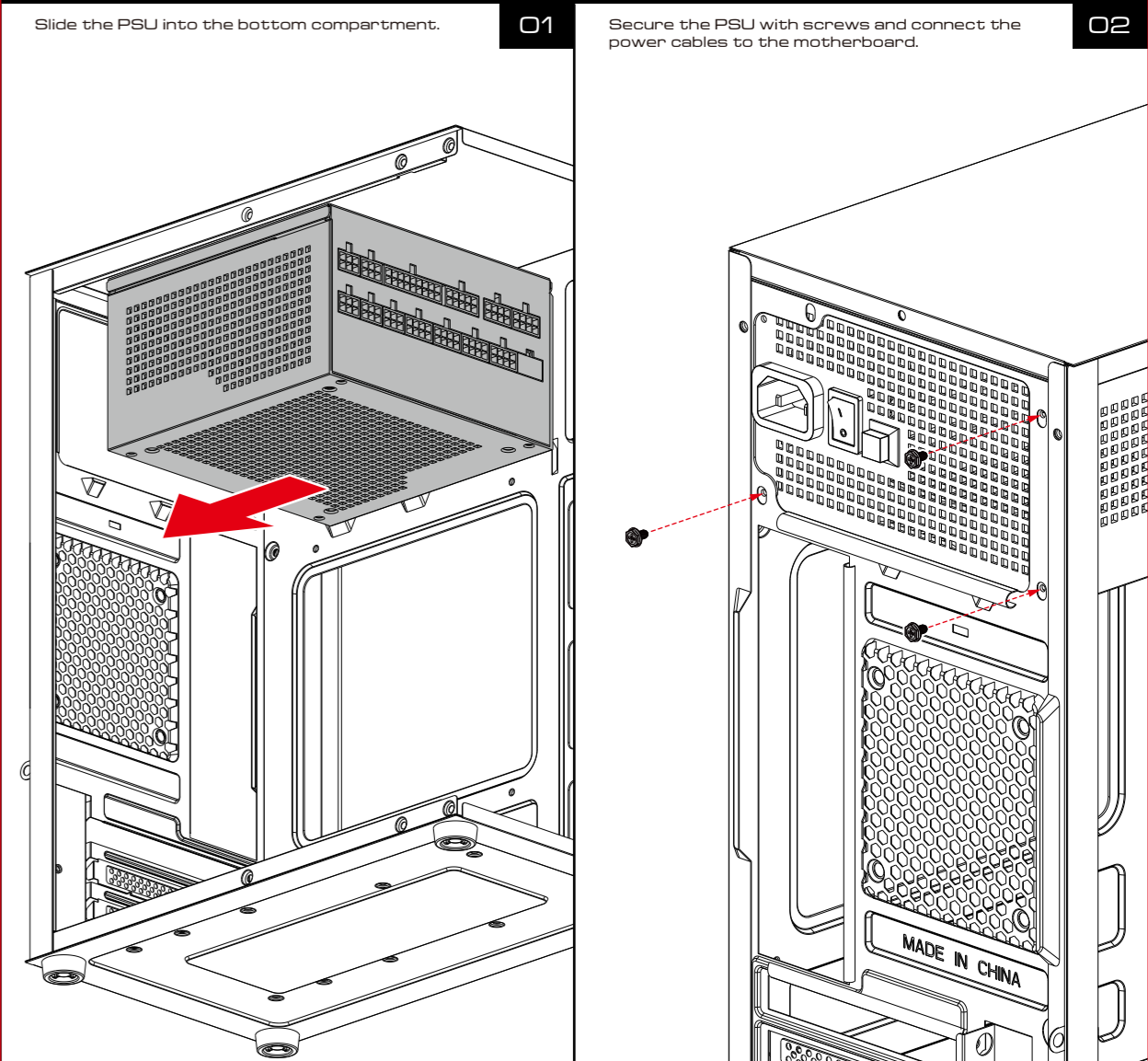
1. Case Type: Micro Tower
2. Motherboard Support: Micro-ATX, Mini-ITX
3. Expansion Slots: 4
4. Material: SPCC, ABS
5. Product Dimension : 320 x 170 x 360 mm(12.6 x 6.7 x 12.1 inch)
6. Chassis Dimension : 290 x 170 x 350mm(11.4 x 6.7 x 13.9 inch)
7. Radiator Support : No
8. Fan Support : Rear: 1 x 80mm
9. Motherboard Sync : No
10. Drive Bays : 1 x 2.5" or 1 x 3.5"(Chassis Bottom)
11. Clearance : CPU cooler height limitation: 150mm · VGA length limitation: 280mm · PSU length limitation: 160mm

## ▼ Case Layout and Parts Identification

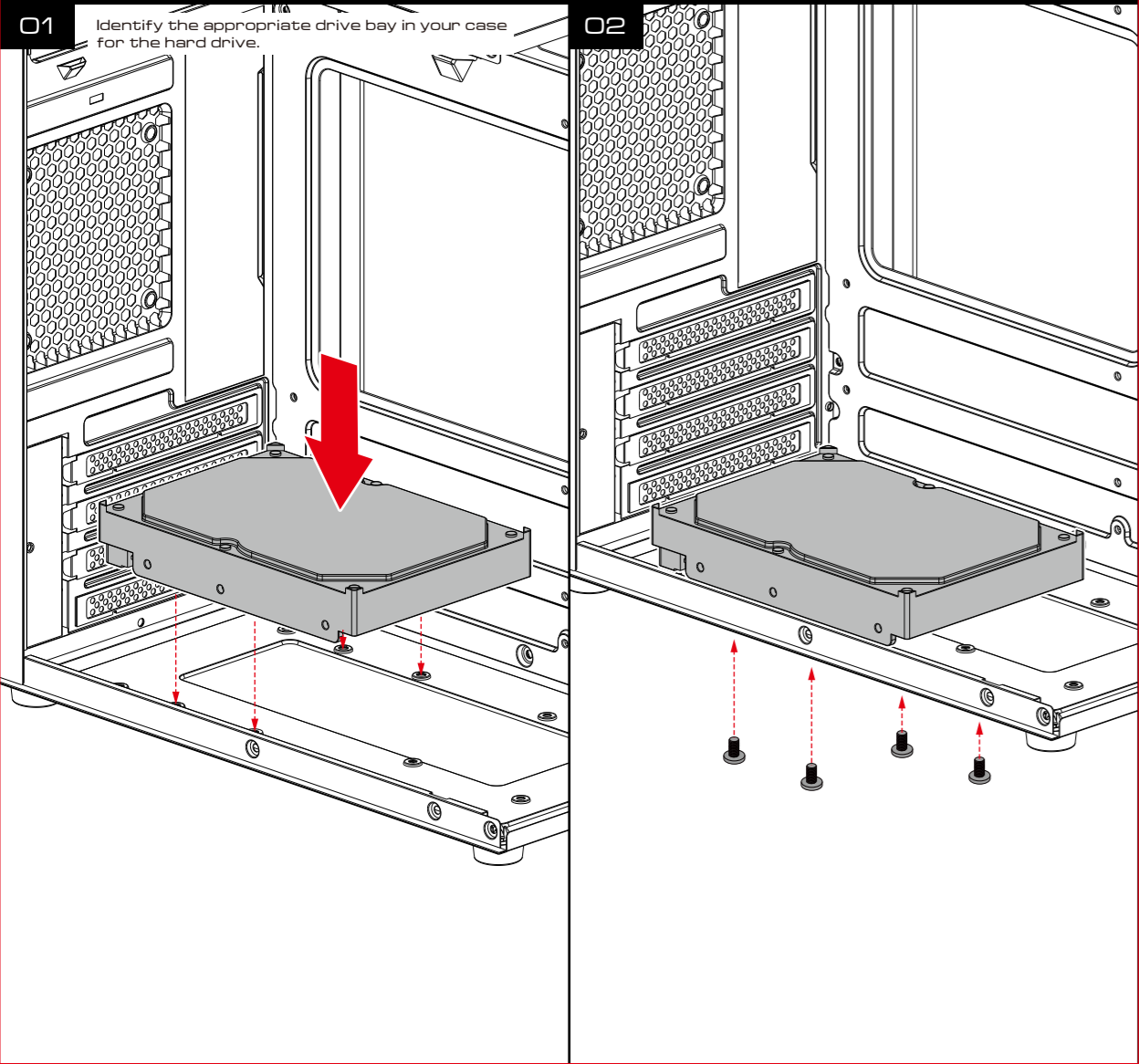


## ▼ Case Layout and Parts Identification

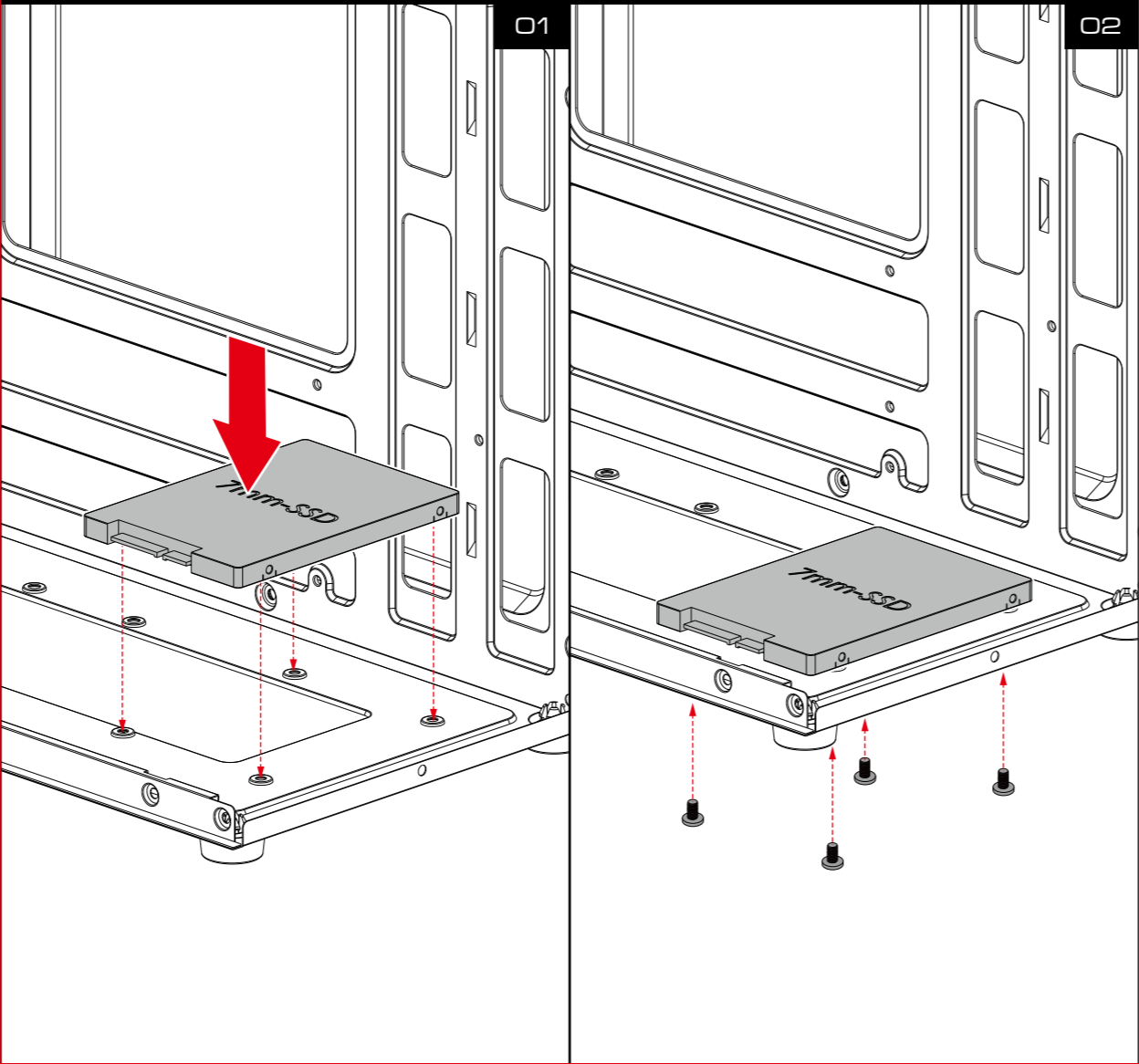
Slide the PSU into the bottom compartment.



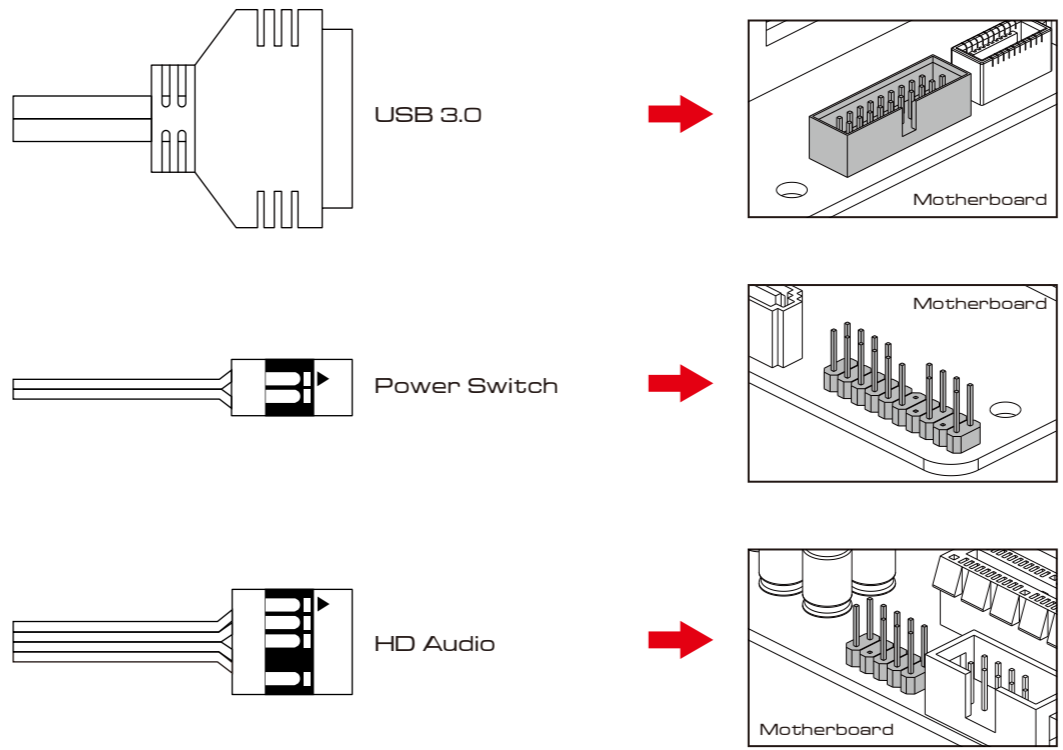
▼HDD Installation



▼SSD Installation



▼Front I/O cables



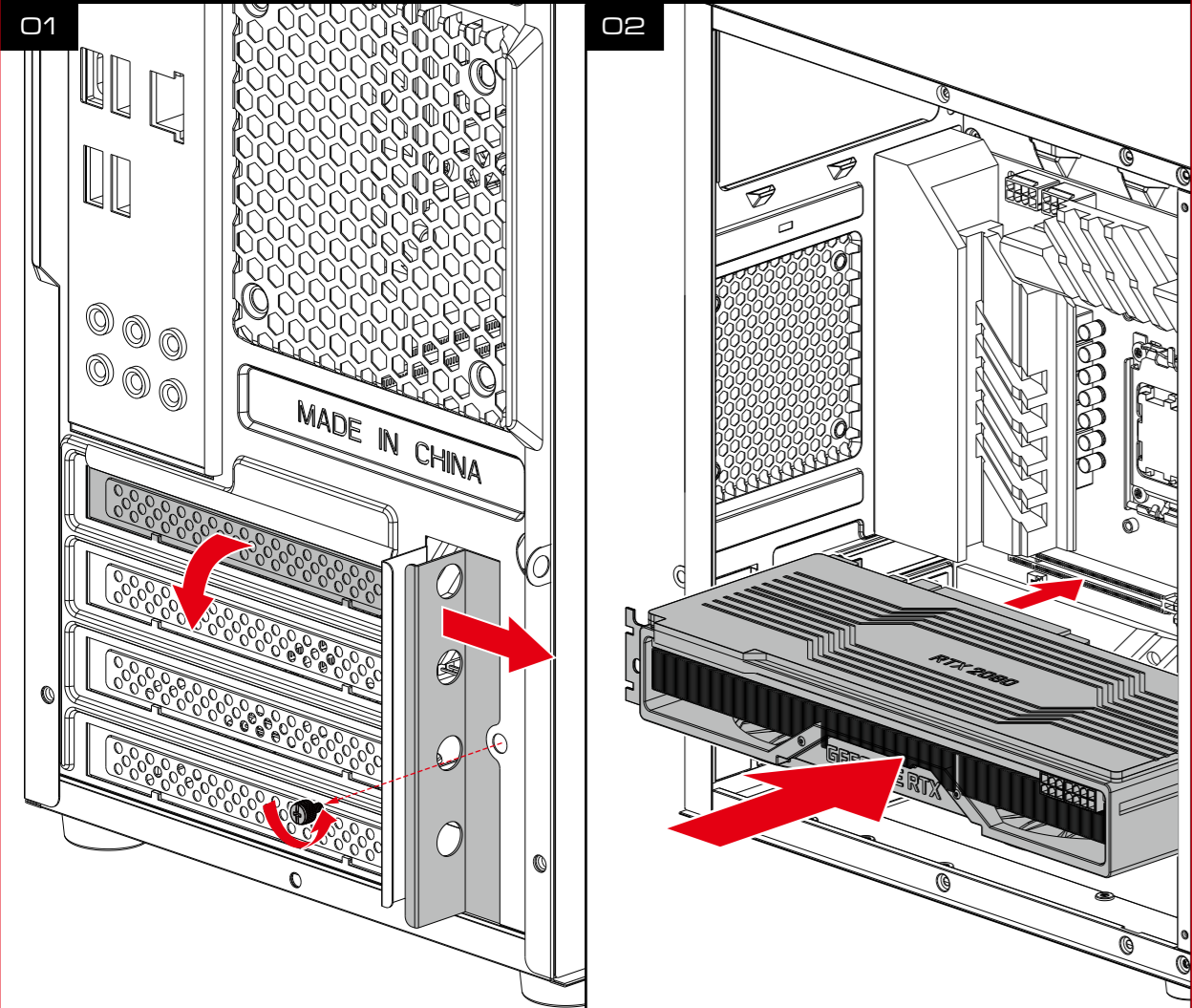
Troubleshooting and Maintenance

- Regularly clean the dust filters and fans to maintain airflow.
- Check all connections if the system is not powering on.

Warranty and Support Information

- Provide details on the warranty period and how to contact support for assistance

▼GPU Installation

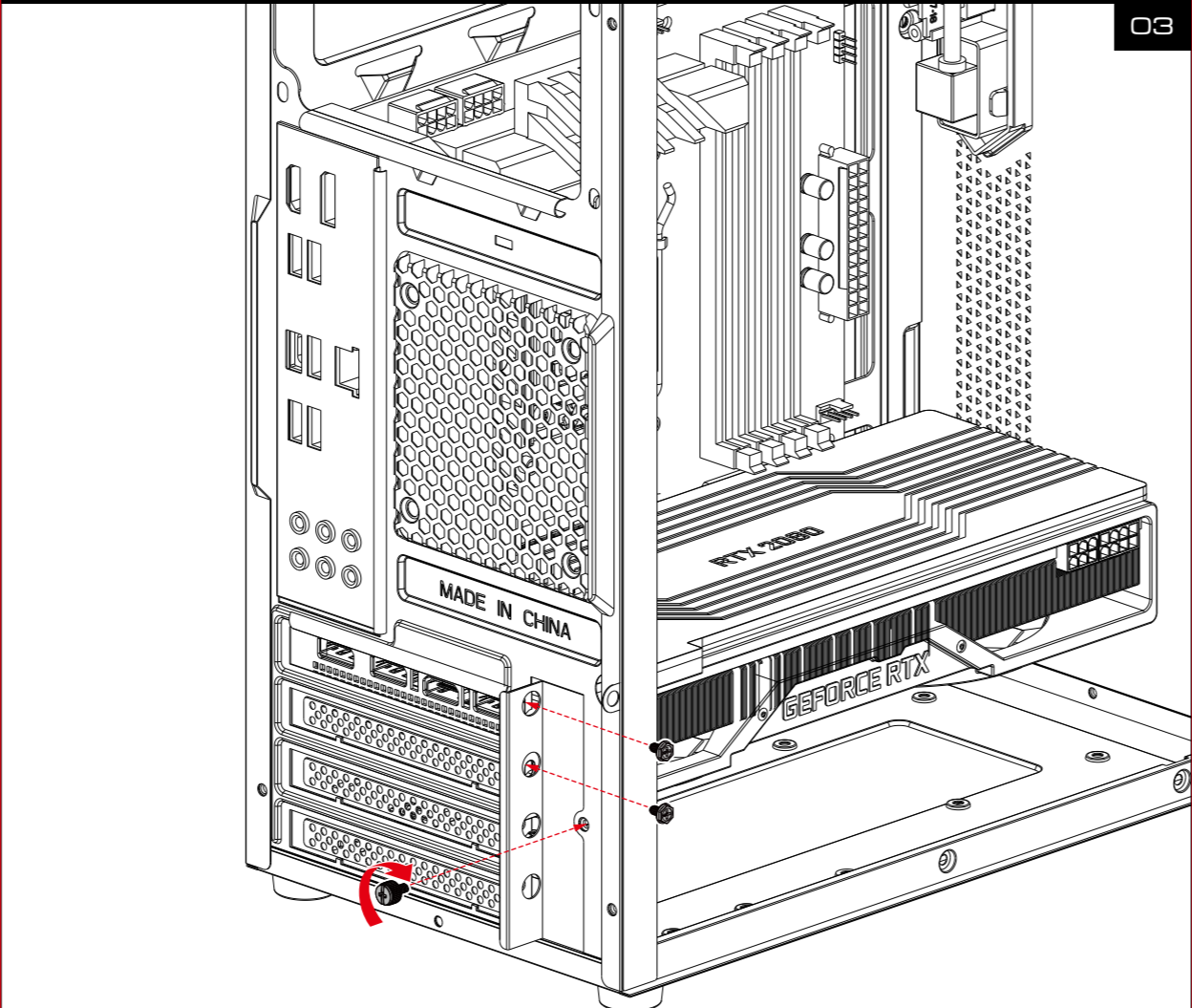


Identify the PCIe x16 slot on the motherboard, usually the largest slot, closest to the CPU.

Align the graphics card's connector with the PCIe slot and gently press down until the card is firmly seated in the slot.

Secure the card to the case with screws

▼GPU Installation



Attach the grouped cables to the case's cable management points. Ensure that the cables are not obstructing any airflow or components

Use additional zip ties or Velcro straps to secure any loose or excess cables. You can also use cable management