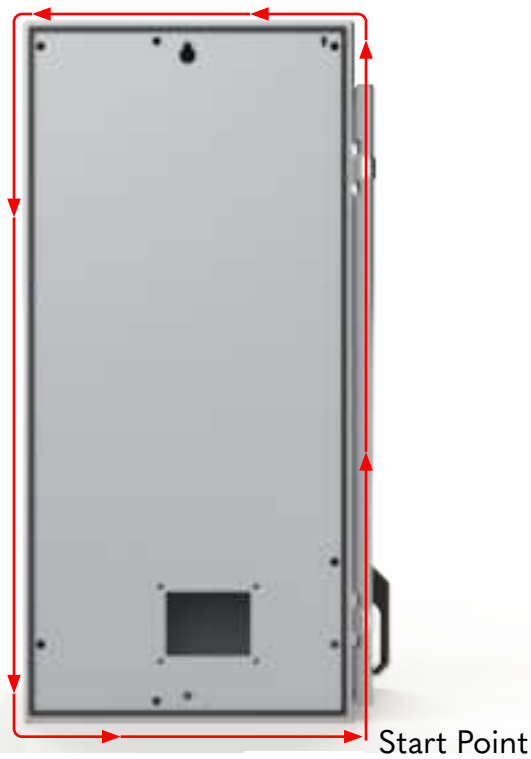
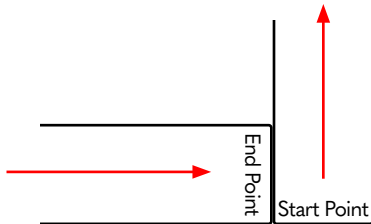


NEXD INSTALLATION



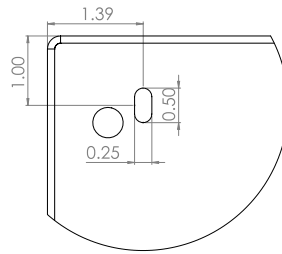
132942 BOM		
Item	Qty	Part Description
1	4	10-32 Flange Nut
2	2	0.38-16 X 0.75 Mtg Hardware
3	1	Sub-Panel and Grounding Hardware
4	1	Hole Plug - Kit
5	1	EXD and EXR Cover plate
6	1	Strip Gasket



Gasket Installation:
Starting at the bottom of the external disconnect, install the gasket (item 6) around the side of the enclosure between the edge and the holes. Edge the end of the gasket up to the start point to ensure no water can travel through.

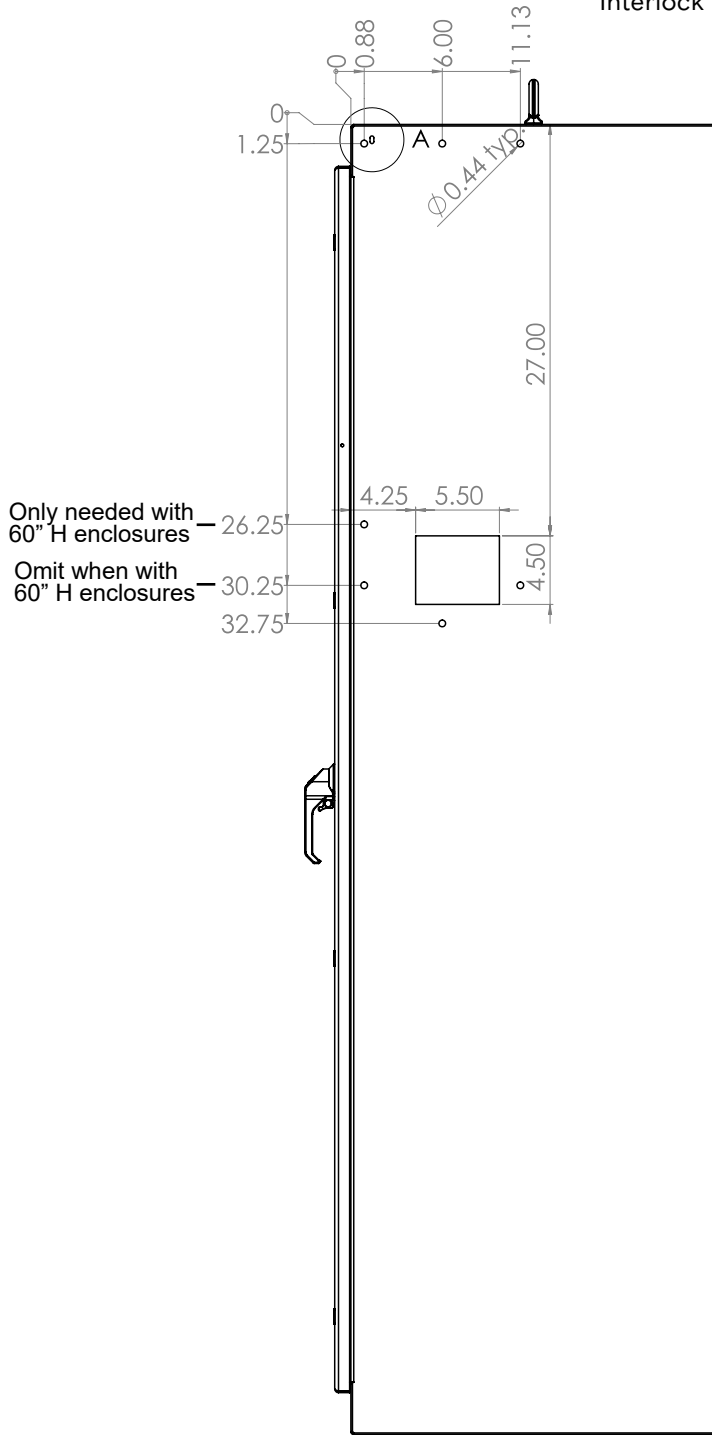


Using the provided bolt pack (item 2) use the mounting hardware to mount the external disconnect.

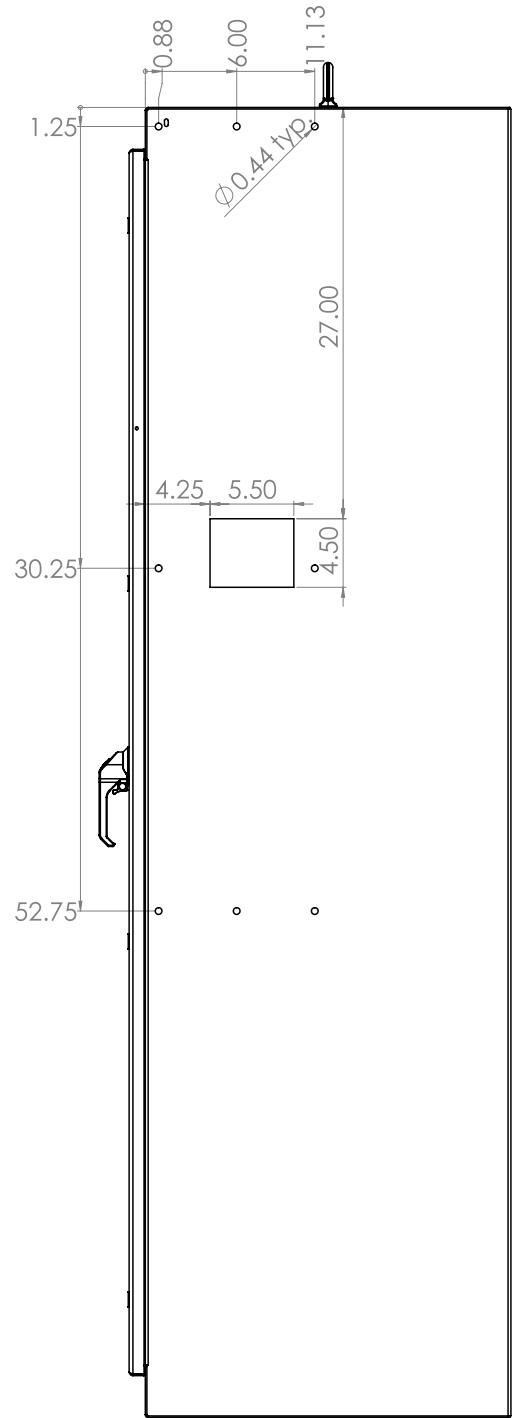


DETAIL A
SCALE 8:6

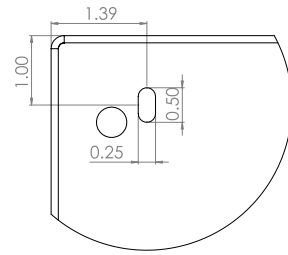
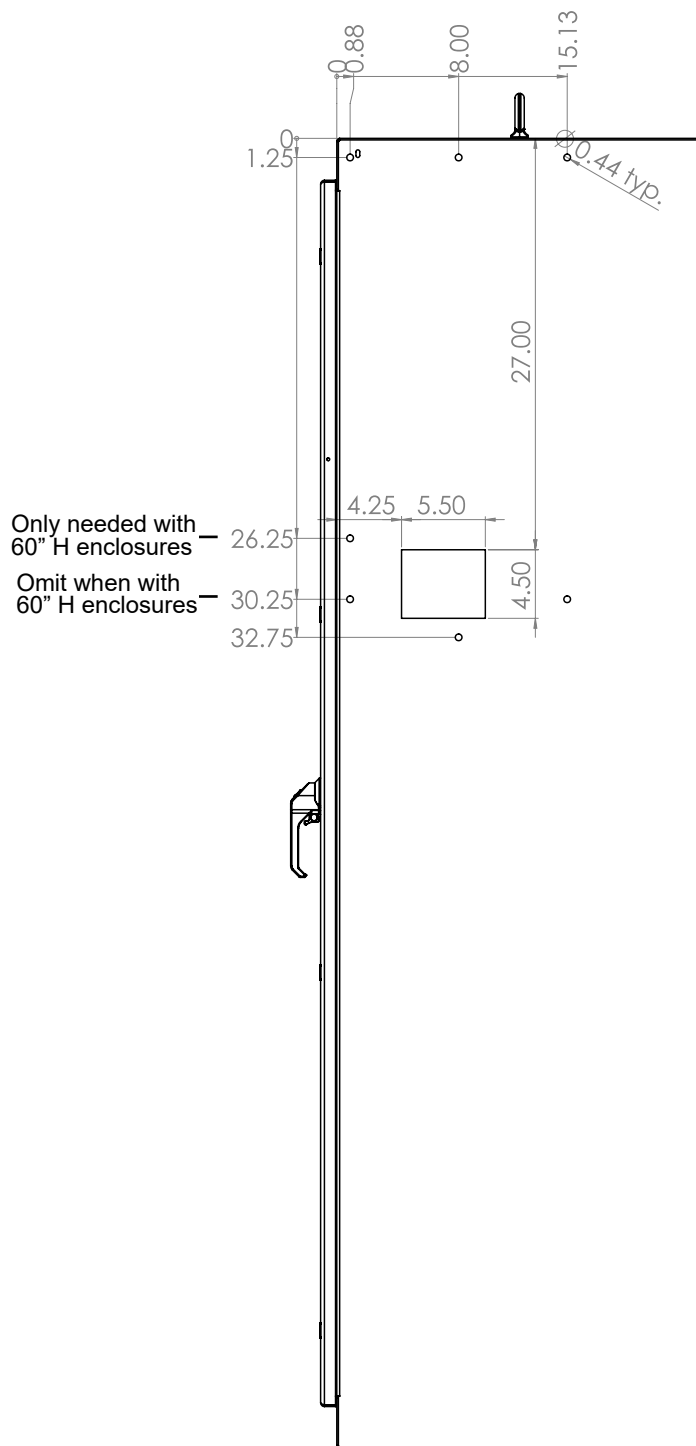
Provisions when Mechanical
Interlock SCE-NEXDMLK is needed



SCE-NEXD12/SS
12" Minimum Enclosure Depth



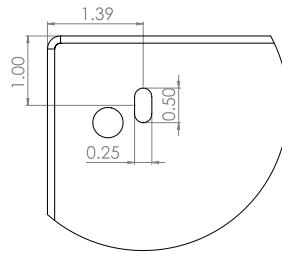
SCE-NEXD12A6/SS
12" Minimum Enclosure Depth



DETAIL A
SCALE 8:6

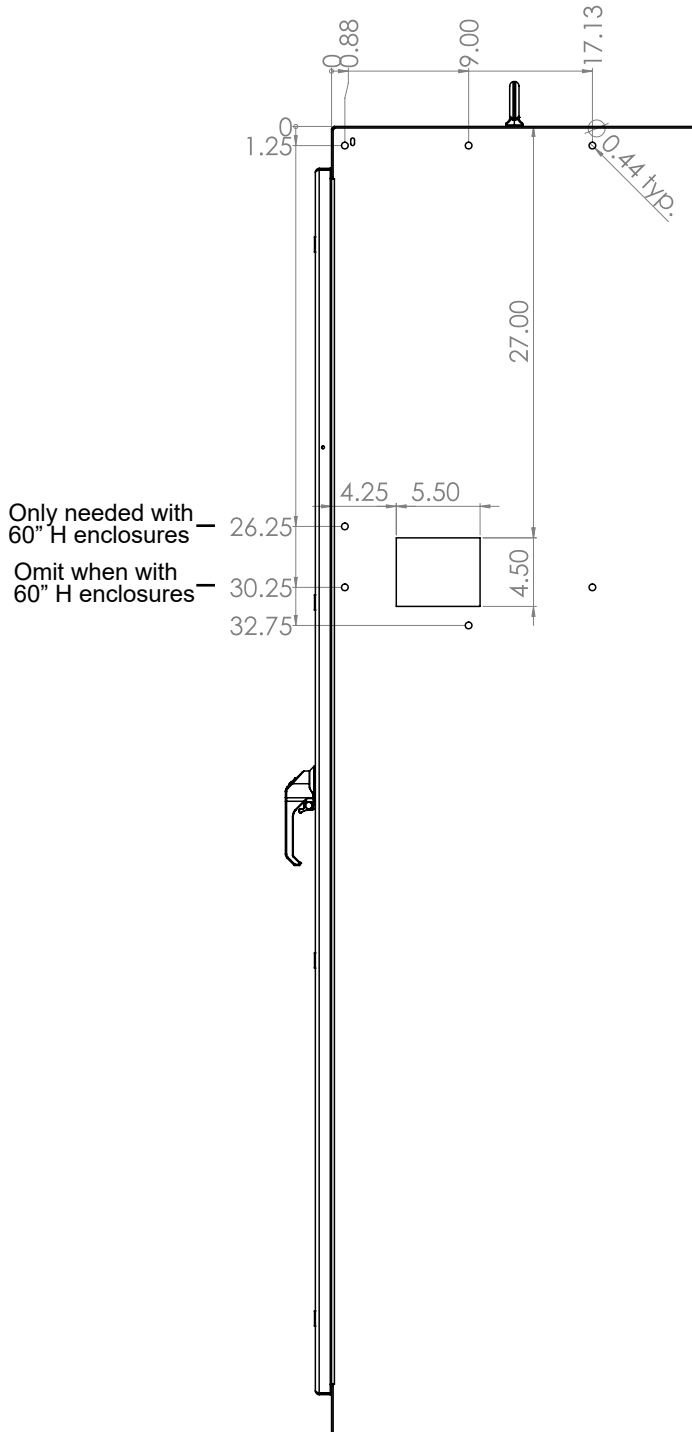
Provisions when Mechanical Interlock SCE-NEXDMLK is needed

SCE-NEXD16/SS 16" Minimum Enclosure Depth

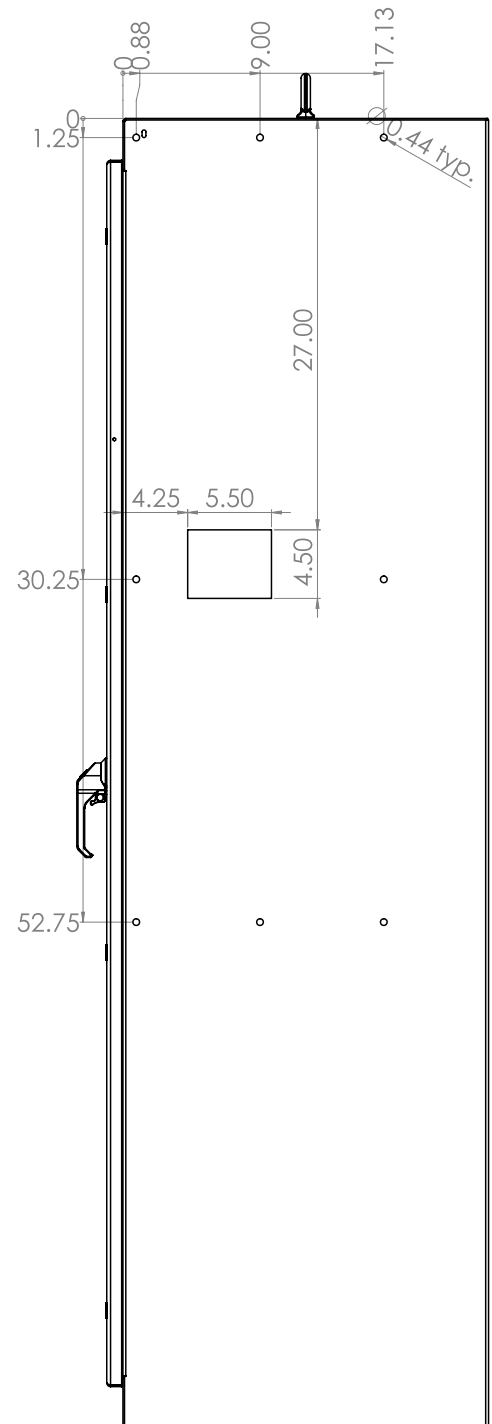


DETAIL A
SCALE 8:6

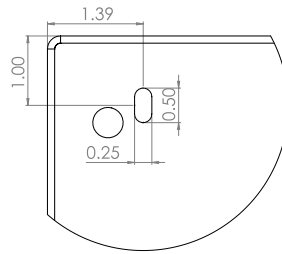
Provisions when Mechanical
Interlock SCE-NEXDMLK is needed



SCE-NEXD18/SS
18" Minimum Enclosure Depth

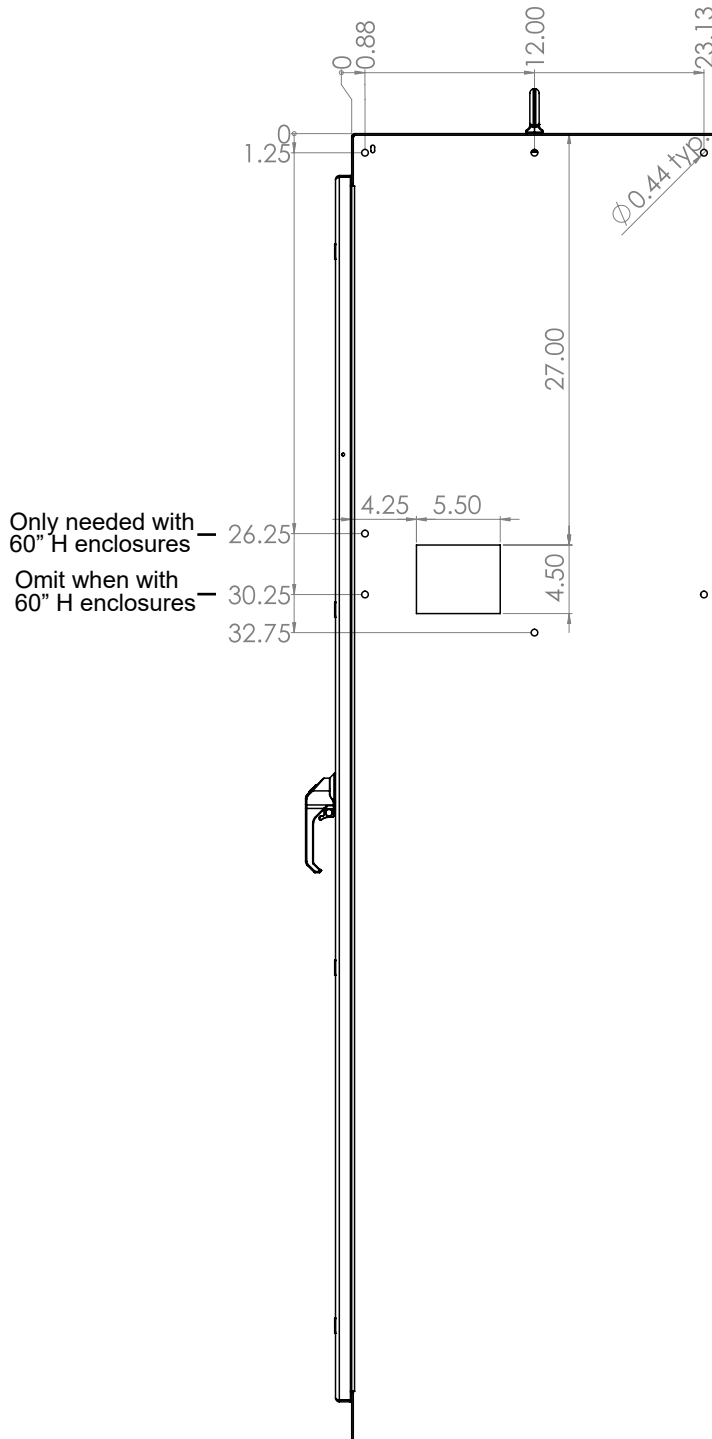


SCE-NEXD18A6/SS
18" Minimum Enclosure Depth

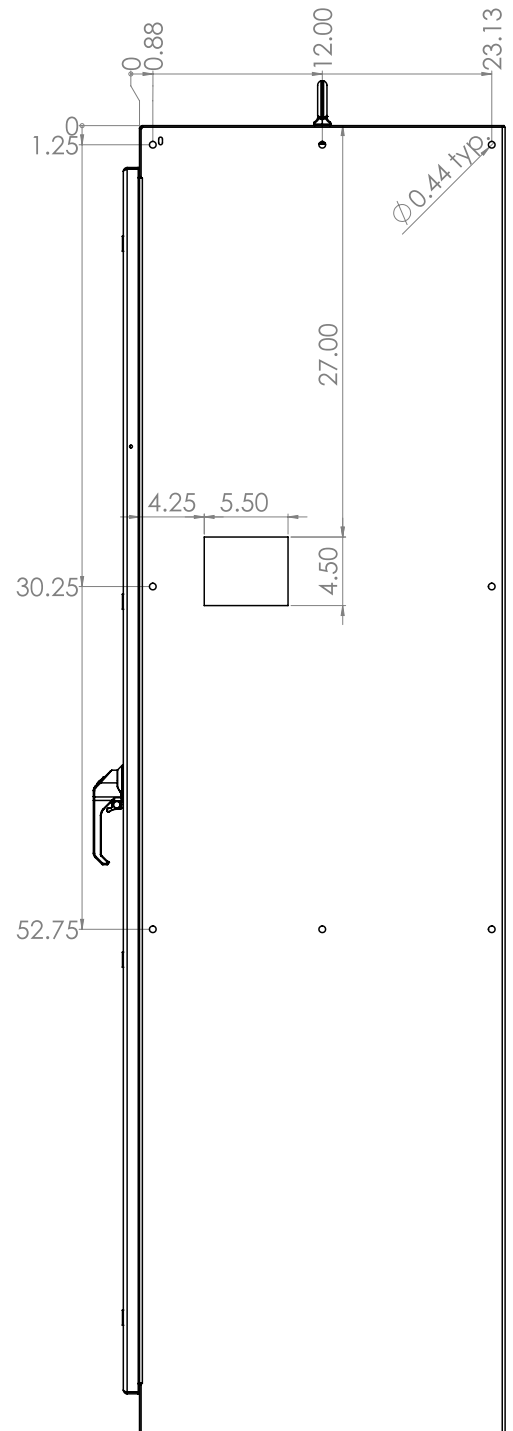


DETAIL A
SCALE 8:6

Provisions when Mechanical
Interlock SCE-NEXDMLK is needed



SCE-NEXD24/SS
24" Minimum Enclosure Depth



SCE-NEXD24A6/SS
24" Minimum Enclosure Depth