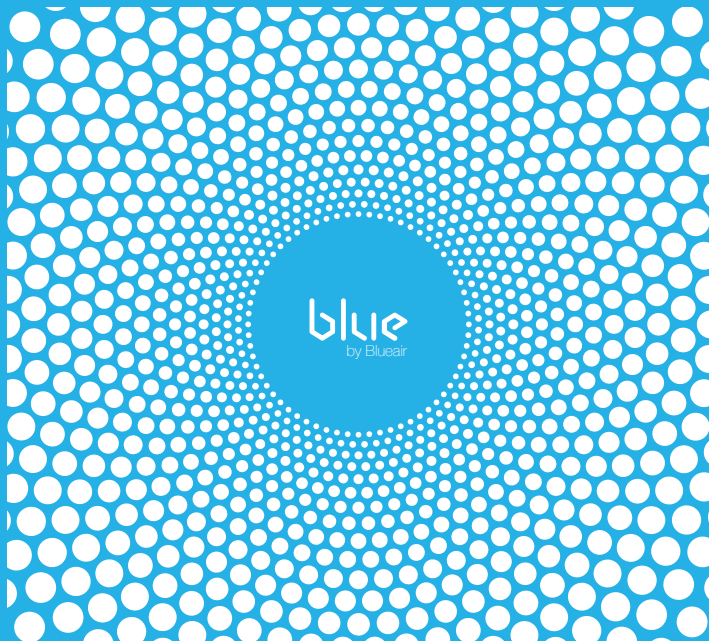




Filter Fan /
Ventilador de filtro /
Ventilateur du filtre /
مروحة المرشح



User Manual /
Manual de usuario /
Guide d'utilisation /
دليل المستخدم

Blue
PURE FAN

Blue PURE FAN

English User Manual
Model: Blue Deduster311

English User Manual

SAFETY	04
SYSTEM OVERVIEW	08
WHAT'S IN THE BOX	10
USAGE	11
SETUP	12
FILTERS	13
CARE AND MAINTENANCE	18
SPECIFICATIONS	19

General safety instructions

Remember, Blue Pure Fan is an electrical appliance. Please read these safety instructions carefully before use and take the necessary precautions to reduce the risk of fire, electric shock or injury.



WARNING: Indicates a hazardous situation that, if not avoided, could result in death or serious injury.



CAUTION: Indicates a hazardous situation that, if not avoided, could result in minor or moderate injury.

**CAUTIONS:**

- Use the grounded power cable provided with your unit to plug directly into an appropriate, grounded electrical outlet. (Refer to the rating label on your unit)
- Do not alter the plug in any way.
- Remember to always disconnect the power supply before servicing the unit.
- Do not use the unit if the power cable or plug is damaged or malfunctions in any manner.
- Keep the power cable away from heated surfaces.
- Do not sit on, stand or climb onto the unit or use the unit either as a table or for storage.
- Do not place any objects on top of the unit, block air outlets or intakes, or allow foreign objects to enter the unit as this may cause an electric shock or damage the unit.

Intended Use



CAUTIONS:

- Supervise children to ensure that they do not play with the appliance.
- This appliance is not intended for use by persons (including children) with reduced physical, sensory or mental capabilities, or lack of experience and knowledge, unless they have been given supervision or instruction concerning use of the appliance by a person responsible for their safety.

WARNING: Changes or modifications to this unit not expressly approved by the party responsible for compliance could void the user's authority to operate the equipment.

NOTE: This equipment has been tested and found to comply with the limits for a Class B digital device, pursuant to Part 15 of the FCC Rules. These limits are designed to provide reasonable protection against harmful interference in a residential installation. This equipment generates, uses and can radiate radio frequency energy and, if not installed and used in accordance with the instructions, may cause harmful interference to radio communications.

However, there is no guarantee that interference will not occur in a particular installation. If this equipment does cause harmful interference to radio or television reception, which can be determined by turning the equipment off and on, the user is encouraged to try to correct the interference by one or more of the following measures:

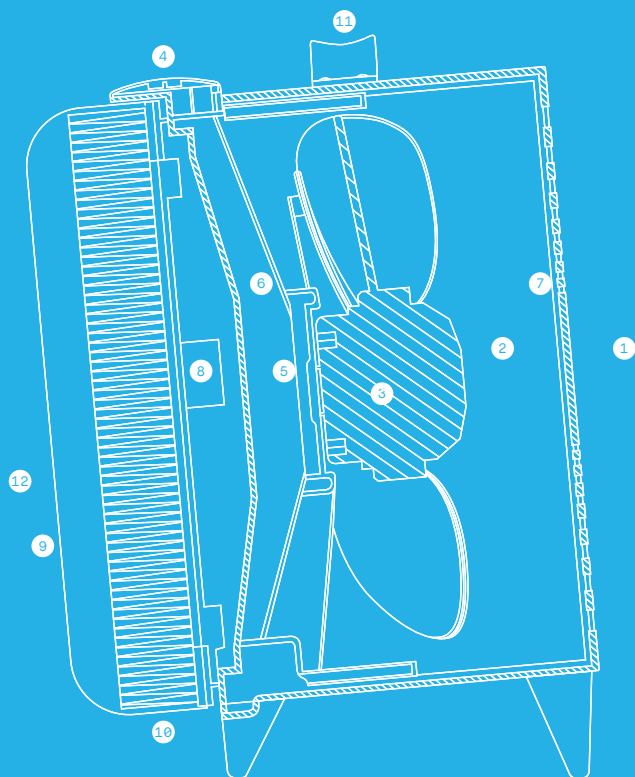
- Reorient or relocate the receiving antenna.
- Increase the separation between the equipment and receiver.
- Connect the equipment into an outlet on a circuit different from that to which the receiver is connected.
- Consult the dealer or an experienced radio/TV technician for help.

This device complies with Part 15 of the FCC Rules. Operation is subject to the following two conditions:

1. this device may not cause harmful interference, and
2. this device must accept any interference received, including interference that may cause undesired operation.

This device contains licence-exempt transmitter(s)/ receiver(s) that comply with Innovation, Science and Economic Development Canada's licence-exempt RSS(s). Operation is subject to the following two conditions: (1) This device may not cause interference, and (2) This device must accept any interference, including interference that may cause undesired operation of the device. This Class B digital apparatus complies with Canadian ICES-003.

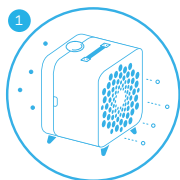
SYSTEM OVERVIEW



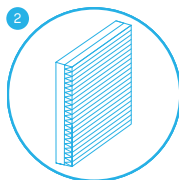
Blueprint

- 1 Air outlet
- 2 Air stream optimizer
- 3 Fan
- 4 Speed Control Button
- 5 Motor
- 6 Fan holder
- 7 Protective grill
- 8 Release button for filter
- 9 Pre-filter
- 10 Particle filter
- 11 Handle
- 12 Air inlet

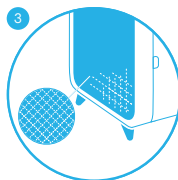
Blue Pure Fan package



The filter fan



Particle filter



Fabric pre-filter

Options

- Choice of color and design for the fabric pre-filter.

Placement

Place Blue Pure Fan in an upright position on the floor in your room. Be sure to place the unit where it won't be knocked over by any person or pet in the household.

Using it in your bedroom:

After 7 seconds the light automatically dims.

Placing the unit:



Place the unit in a location where air can circulate freely in, out and around the unit.



Do not place the unit closer than 10 cm (4") from another object.



Do not place the unit directly on or against soft furnishings such as bedding or linen.



Do not place the unit near sources of heat, such as radiators, fireplaces or ovens.

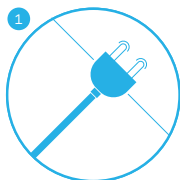


Do not place the unit near wet areas, such as bathrooms or laundry rooms where it may come into contact with water.

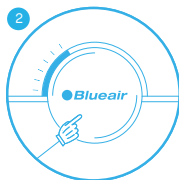


Do not place the unit outdoors.

Getting started

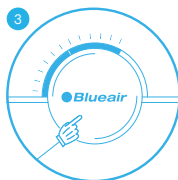


Plug in your unit.



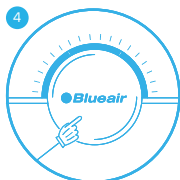
On/Low

Press the button once to turn the unit on and set it to low speed 1.



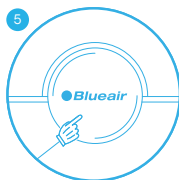
Medium

Press twice to set to medium speed 2.



High

Press three times to set to high speed 3.



Off

Press a fourth time to turn the unit off.

Moreover, Blue Pure Fan has an Autostart feature. This means that the unit will automatically restart at the set speed if a power failure occurs, the unit is unplugged or a power switch timer is used.

Filters

General information:

The unit is delivered with two fabric pre-filters and one particle filter which removes the following pollutants:



Particles



Dust



Pollen



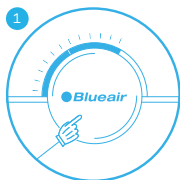
Pet dander



Dust mites

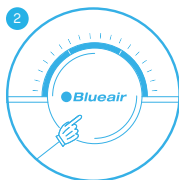
FILTERS

Button control functions



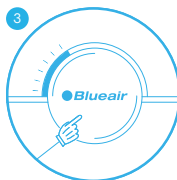
Change filter indicator

When the indicator turns yellow (after 5 months of operation), it's time to order a new filter.



Change filter

When the indicator light turns red (after 1 extra month of operation), you should change the main filter.



Reset filter alert

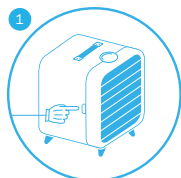
Press the button for three seconds to reset the filter alert.

You can change the filter before the indicator light turns red, i.e. when it first turns yellow. In this case, just reset the unit after changing the filter and use for another 6 months. (see "Change the main filter")

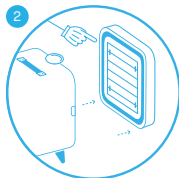
Vacuum or wash the pre-filter

Occasionally vacuum the exterior of the fabric pre-filter to remove dust.

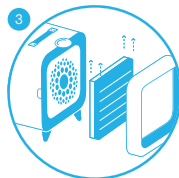
Before removing the fabric pre-filter, turn off and unplug the unit.



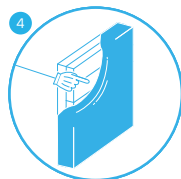
Gently press the release buttons on both sides of the unit until you hear a click.



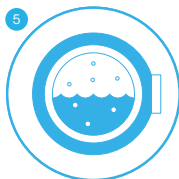
Remove the back part of the unit.



Remove the main filter and pre-filter from the filter frame.



Carefully remove the fabric pre-filter from the main filter.



Wash the fabric pre-filter on a gentle, low temperature cycle in the washing machine.

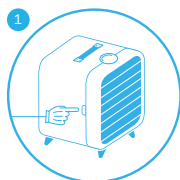
After washing the pre-filter, reverse this procedure (steps, 4, 3, 2 and 1).

Plug in and turn on the unit.

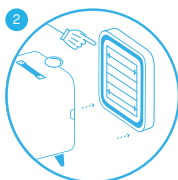
FILTERS

Change the main filter

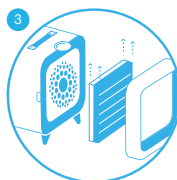
Be sure to unplug the unit before changing the main filter.



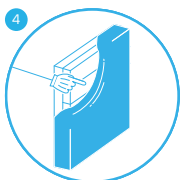
Gently press the release buttons on both sides of the unit until you hear a click.



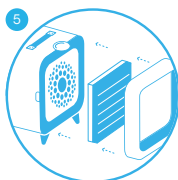
Remove the back of the unit.



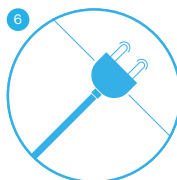
Remove the main filter from the filter frame.



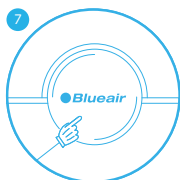
Carefully detach the fabric pre-filter from the old main filter and attach it onto the new main filter.



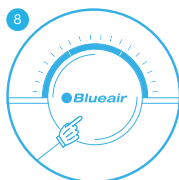
Insert the new main filter back into the filter frame and lock into position.



Plug in the unit.



Restart the unit.
Press the button
for a duration of 5
seconds to re-set the
unit.




This lets the unit
know that you have
changed the filter.
The indicator light will
flash for five seconds,
and then change from
red to white.

General care

Take good care of your filter fan to ensure that it delivers optimal performance.

- Vacuum the pre-filter occasionally to remove dust, or wash it on a gentle, low temperature cycle in the washing machine.
- Change the main filter every six months, depending on the operating conditions. Remember to unplug the unit before changing the main filter.
- When the unit is open to change the filter, vacuum any dust that may have accumulated inside the unit.
- Occasionally wipe the top of the unit with a dry dust cloth.

Specifications¹

Removal rate	cfm m ³ /h	Pollen  182 300
Filter replacement indicator	Yes	
Speeds	1-2-3-off	
Dimensions	Height:	380 mm (14.9 in)
	Width:	330 mm (13 in)
	Depth:	280 mm (11 in)
	Weight:	5.3 kg (11.6 lbs)
Airflow rate	460 m ³ /h (250 cfm)	
Power usage ²	30 - 61 W	
Noise level	31 - 56 dB(A)	
Average filter service life	six months ³	
Warranty	Local regulations	

¹Certified ratings as stated are based on U.S. version models (120VAC, 60Hz) with particle filter. Ratings may be affected by use of other Blue filter models.

²The available electrical power voltage and frequency affects the power consumption of the unit. the power consumption might therefore be different from the stated value.

³Depending on air quality in the area of use, the recommended six-month filter lifetime may be longer.



www.blueair.com

Blueair AB

Karlavägen 108
115 26 Stockholm
Sweden
Tel: +46 8 679 45 00
info@blueair.se

Blueair Inc.

125 S Clark
Suite 2000
Chicago, IL. 60603
USA
Tel: +1 888 258 3247
info@blueair.com

Blueair AB Middle East

Jafza One, Office No. AB1503
Jebel Ali Free Zone
P.O. Box No. 263947
Dubai, United Arab Emirates
Tel: +971 (4) 8821244
salesme@blueair.se

Blueair Asia Ltd.

Unit 8C, 8/F, MG Tower,
133 Hoi Bun Road,
Kwun Tong, Kowloon,
Hong Kong
Tel: +852 2345 8988
blueairasia@blueair.se

Blueair (Shanghai) Trading Co. Ltd.

Room 1001, City Gateway
No. 398 North Caoxi Road
Xuhui Distr, Shanghai,
China
Tel: 400 006 9693
info@blueair.cn

**Blueair,
Hindustan Unilever Limited (HUL)**

Unilever House, B. D.
Sawant Marg, Chakala, Andheri (E),
Mumbai - 400 099
India
Tel: 1860-210-1000
blueair.hul@unilever.com