



KeyLine, Suspended

SM350C 40S/840 PSD PCS L1200 WH

KeyLine – Power supply unit with DALI interface – Medium beam – 74° x 74° –

These days, many office owners and office lighting designers prefer lines of light. The reason is simple. Not only do light lines come in a minimalistic design; they also offer far more choice and flexibility. Short or long lines and luminaires, standalone luminaires, different shapes and even a variety of colours; anything is possible. And with KeyLine, all these benefits come at a competitive price while still complying with office lighting norms. KeyLine is a superb light line range with a slim, minimalistic design and a high lumen output to illuminate the brightest office spaces. But with comfortable, low levels of glare it's also easy on the eye and complies with UGR19. This makes KeyLine ideal for linear applications, as well as standalone suspended or surface-mounted luminaires. A range that offers the ultimate flexibility and unlimited possibilities. KeyLine design flexibility comes in the form of different lengths, colours and light outputs – including L-shapes, as well as straight lines. All with high efficiency up to 130 lm/W, and the option to upgrade with wireless connectivity and control. Add to that attractive pricing, and with KeyLine you can also enjoy excellent value that ensures a superb total cost of ownership.

Warnings and Safety

- KeyLine luminaires have an IPX0 classification and are not protected against water ingress. We strongly recommend that the installation environment is checked for suitability.
- If – despite the IPX0 classification warning – luminaires are subject to water ingress, Philips and Signify cannot guarantee safety or prevent failure. In this case the product warranty does not apply and becomes void.

Product data

| General information | | Light source replaceable | |
|----------------------------|-------------------|--------------------------|--------|
| Beam angle of light source | 120 ° | No | |
| Lamp colour code | 840 neutral white | Number of gear units | 1 unit |

KeyLine, Suspended

| | |
|---|--|
| Driver/power unit/transformer | PSD [Power supply unit with DALI interface] |
| Driver included | Yes |
| Optic type | MB [Medium beam] |
| Luminaire light beam spread | 74° x 74° |
| Control interface | DALI |
| Connection | Push-in connector 5-pole (PI) |
| Cable | - |
| Protection class IEC | Safety class I (I) |
| Glow-wire test | 850/30 [Temperature 850 °C, duration 30 s] |
| Flammability mark | F [For mounting on normally flammable surfaces] |
| CE mark | CE mark |
| ENEC mark | ENEC mark |
| Warranty period | 5 years |
| Constant light output | No |
| Number of products on MCB (16 A type B) | 22 |
| Photobiological risk | Photobiological risk group 0 @ 200mm to EN62471 |
| EU RoHS compliant | Yes |
| Product family code | SM350C [KeyLine] |
| Unified glare rating CEN | 19 |

Light technical

| | |
|---------------------|-----|
| Saturated Red | <50 |
| Flickering | 1 |
| Stroboscopic effect | 0.4 |

Operating and electrical

| | |
|---------------------|--------------|
| Input Voltage | 220 to 240 V |
| Input frequency | 50 to 60 Hz |
| Inrush current | 23.1 A |
| Inrush time | 221 ms |
| Power factor (min.) | 0.9 |

Controls and dimming

| | |
|----------|-----|
| Dimmable | Yes |
|----------|-----|

Mechanical and housing

| | |
|-----------------------------|-----------------|
| Housing material | Aluminium |
| Reflector material | Steel |
| Optic material | Polycarbonate |
| Optical cover/lens material | Polycarbonate |
| Fixation material | Stainless steel |
| Optical cover/lens finish | Textured |

| | |
|-------------------------------------|---|
| Overall length | 1127 mm |
| Overall width | 70 mm |
| Overall height | 70 mm |
| Colour | White RAL 9003 |
| Dimensions (height x width x depth) | 70 x 70 x 1127 mm (2.8 x 2.8 x 44.4 in) |

Approval and application

| | |
|------------------------------|--------------------------|
| Ingress protection code | IP20 [Finger-protected] |
| Mech. impact protection code | IK02 [0.2 J standard] |
| Sustainability rating | - |

Initial performance (IEC compliant)

| | |
|-------------------------------------|----------------------|
| Initial luminous flux (system flux) | 4000 lm |
| Luminous flux tolerance | +/-10% |
| Initial LED luminaire efficacy | 133 lm/W |
| Lamp colour temperature | 4000 K |
| Colour Rendering Index | >80 |
| Initial chromaticity | (0.39, 0.38) SDCM <3 |
| Initial input power | 30 W |
| Power consumption tolerance | +/-10% |

Over time performance (IEC compliant)

| | |
|---|-----|
| Control gear failure rate at median useful life 5 % | |
| 50,000 h | |
| Lumen maintenance at median useful life* | L80 |
| 50,000 h | |

Application conditions

| | |
|------------------------------------|---------------|
| Ambient temperature range | +10 to +35 °C |
| Performance ambient temperature Tq | 25 °C |
| Maximum dimming level | 1% |
| Suitable for random switching | No |

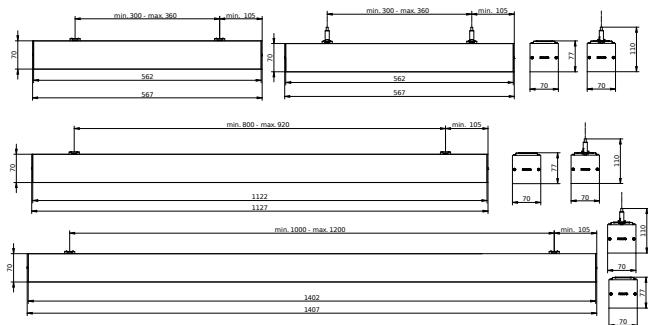
Product data

| | |
|-----------------------------------|---------------------------------|
| Full product code | 871951462424500 |
| Order product name | SM350C 40S/840 PSD PCS L1200 WH |
| EAN/UPC – product | 8719514624245 |
| Order code | 910925868360 |
| SAP numerator – quantity per pack | 1 |
| Numerator – packs per outer box | 1 |
| SAP material | 910925868360 |
| Net Weight (Piece) | 2.750 kg |



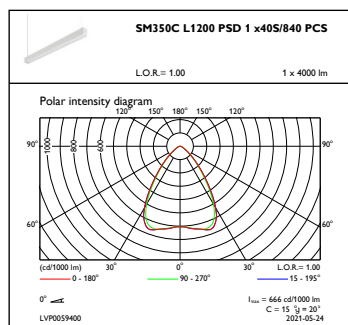
KeyLine, Suspended

Dimensional drawing

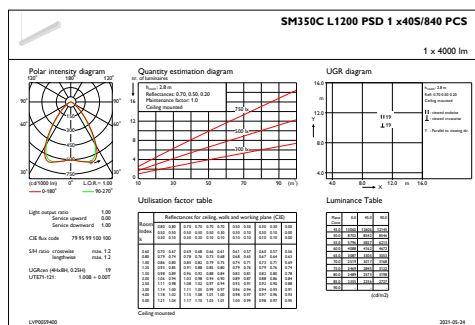


SM350C 40S/840 PSD PCS L1200 WH

Photometric data



OFPC1_SM350CL1200PSD1x40S840PCS



IFGU1_SM350CL1200PSD1x40S840PCS

