

N301086-J
Horizontal Sheer Installation Instruction



Inside Mount Semi Inside Mount Outside Mount

- Screw gun / Drill
- Tape Measure
- Screwdriver
- Level
- Pencil



Hardware Included

1. Screws needed for installing

Surface	Hardware	Drawing	Remarks
Wood	#8 x 1 1/4" Hexagon screw		To install bracket
	#8x2"round head screw		To install bracket with 2 or 3 extensions
Drywall /Plaster	Wall Anchors, Expansion Bolts		(Not provided)
Metal	Sheet Metal Screws		(Not provided)

2. Hardware for Horizontal Sheer

Hardware	Drawing	Usage
Shade bracket		To install shade (on Clutch side)
Shade bracket		To install shade (on End Plug side)
Mounting bracket		To install raceway (for inside mount)
Mounting bracket		To install raceway (for outside mount)
Extension		Optional upon request

Fascia/Valance bracket		To install Fascia / Valance (mounted on raceway)
Curved Fascia/Wood Valance clip		To install Curved Fascia / Wood Valance (placed on Fascia/Valance)

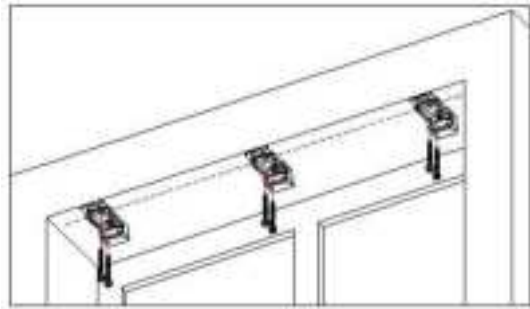
Fabric Valance Clip		To install Fabric Valance (placed on Valance)
Curved Fascia end cap		For Curved Fascia
Fabric Valance end cap		For Fabric Valance
Valance return connector		To connect wood valance returns

Bracket Installation

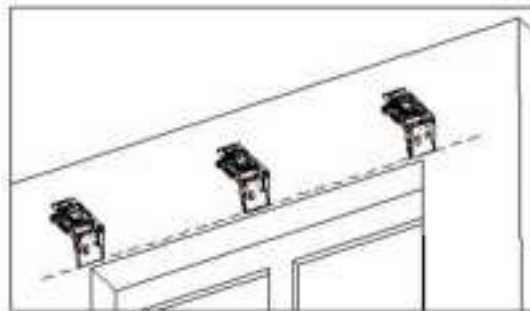
Installation of Mounting Bracket

When installing the shade bracket, the distance from the bracket's front mounting hole to the front edge of the window frame should be at least 3/4". Make sure both shade brackets line up with each other horizontally. Each shade bracket will require two 1 1/4" hexagon screws for the installation.

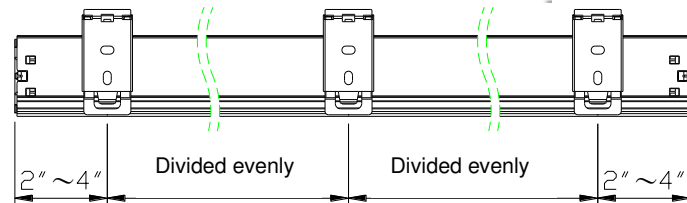
Install the brackets into the wall:



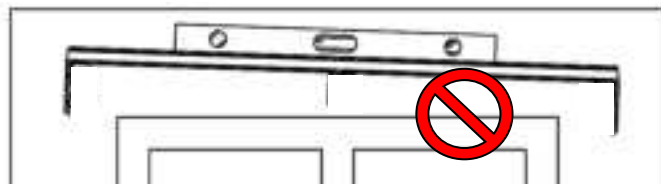
Inside Mount



Outside Mount



The space between each mounting bracket should be divided evenly as pictured.

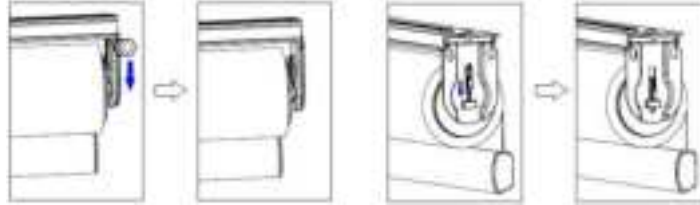


Note: Use the level to check the raceway. If it is not even, adjust the position of the shade brackets to keep the raceway leveled.

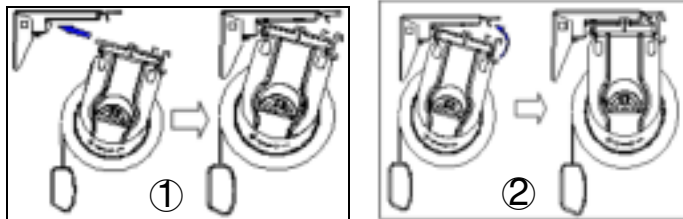
Shade Installation and Removal

There are two installation methods.

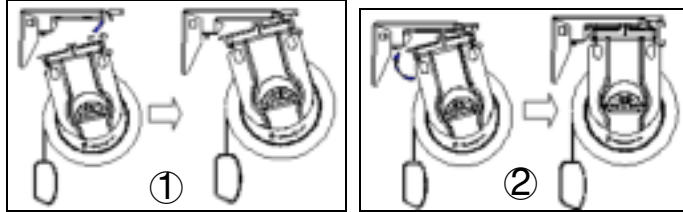
Before installing the shade into the mounting brackets, please locate the lock pin in the shade bracket on the end plug side. Slide the pin downward into the end plug to prevent the shade from falling.



1. Insert the back edge of the raceway into the back plastic part of the bracket, and then push the raceway upwards so that the front rib of the raceway snaps into the bracket.



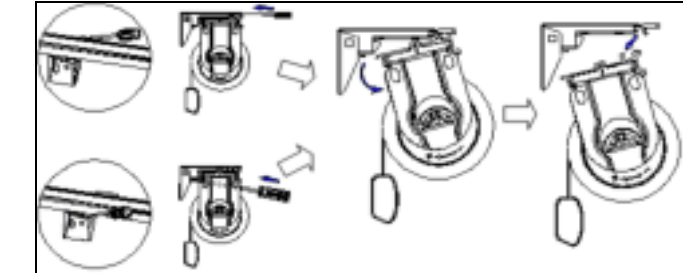
2. Snap the front rib of the raceway into the bracket, and then push the raceway backwards and upwards so that the back of the raceway is stuck to the back plastic part of the bracket.



Removal of Shade

Use a tool to push back the front or back plastic part of the brackets, and then turn the back side of the raceway downward so that it detaches from the bracket.

Finally remove the raceway by pulling downward from the brackets.

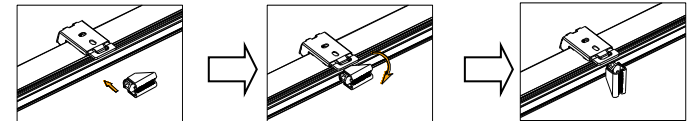


Fascia & Valance Installation and Removal

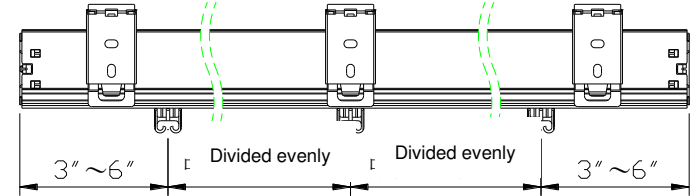
Valance Bracket Installation

Stick the valance bracket horizontally into the raceway groove and turn 90 degree to lock in the raceway groove. The top groove of the valance bracket should hook onto the top of the raceway while the bracket's

bottom groove clips into the bottom rib of the raceway, as shown below.



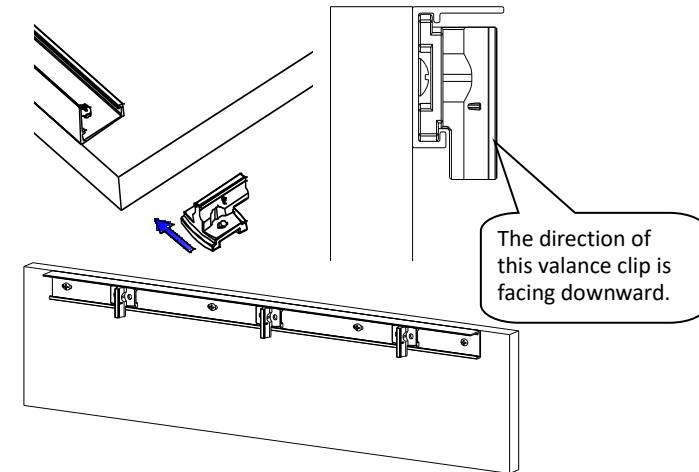
Valance bracket location: distance to ends of the raceway is 3"~6", middle distances are divided evenly. As drawing shown below:



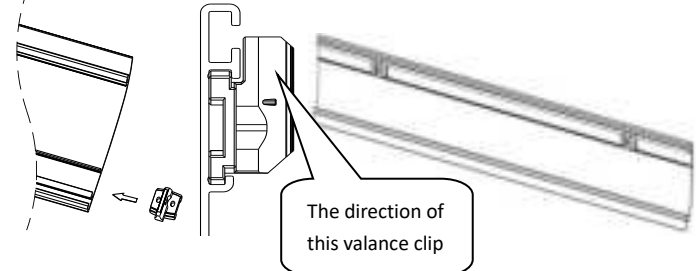
Valance Clip Installation

Insert the valance clip into the dedicated groove on the strip, paying special attention to the direction the valance clip. For a valance, the valance clip should face downwards. The valance clip location should align with the valance bracket as pictured below.

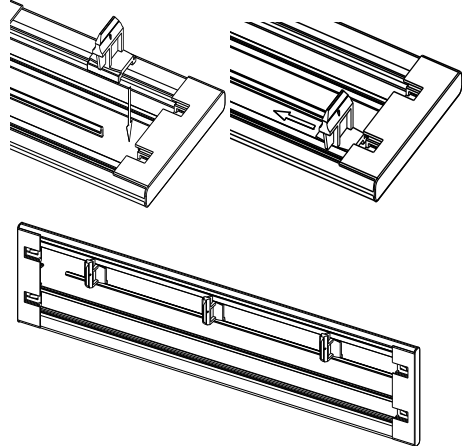
For Modern Wood Valance:



For Curved Fascia:



For Fabric Valance:



Attach Valance Return to Valance

- Note: please skip this step if there is no return.
- First insert valance return connector to return.
 - Then attach return to valance

For Modern Wood Valance:

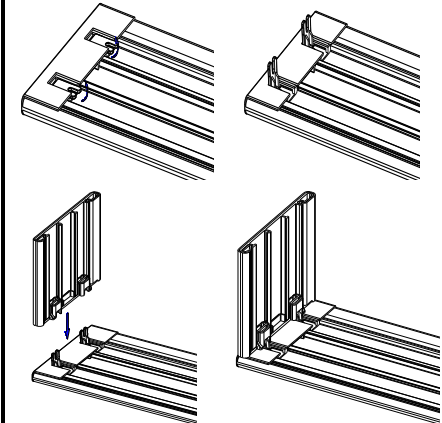


Attach Fascia End Cap to Curved Fascia



Attach End Cap to Fabric Valance

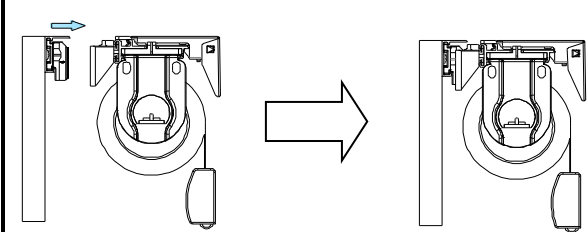
- Turn the end cap connector upwards(90°).
- Then insert the end cap.



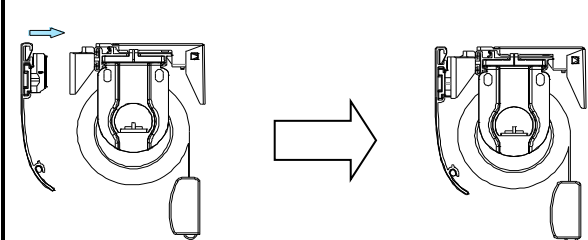
Attach Valance /Fascia to Raceway

Slide the valance clips to a position on the valance/fascia so that they are each aligned with a valance bracket on the raceway, and then push the valance clips into the valance bracket.

For Valance:

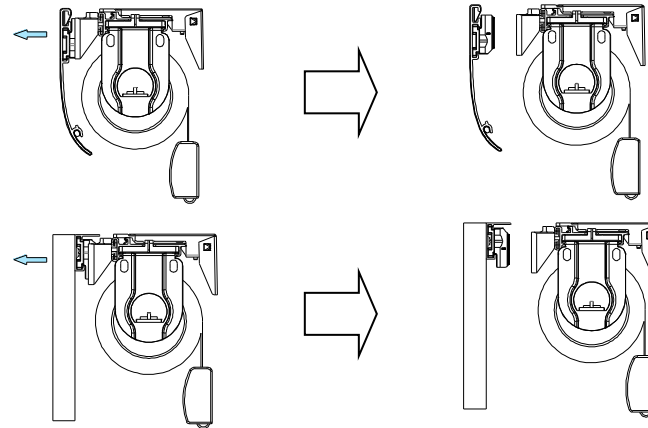


For Fascia:

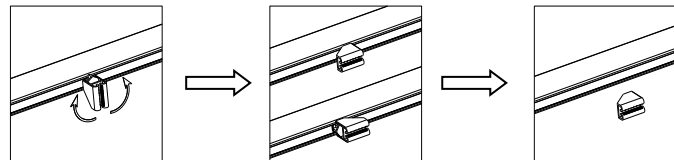


Valance/Fascia Removal

- First, remove Valance/Fascia together with valance clip from valance bracket.

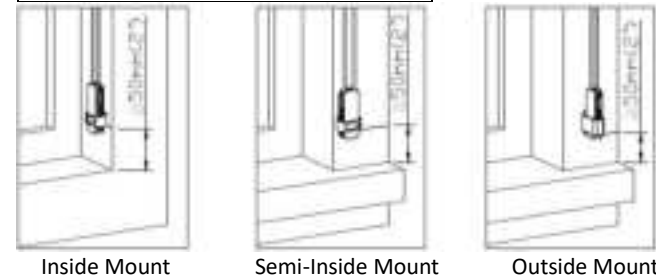


- Take the shade down from the mounting bracket before removing valance bracket from raceway. Turn the valance bracket 90 degrees, then take the valance bracket off the raceway, as shown below.



Note: The installation & removal for all fascias & valances are the same.

Cord Tensioner Installation and Removal

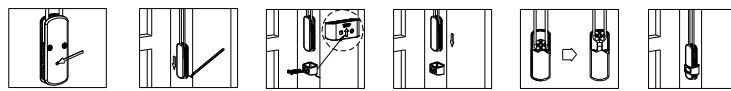


Cord tensioners are included for all mount types: inside mount, semi-inside mount, and outside mount.

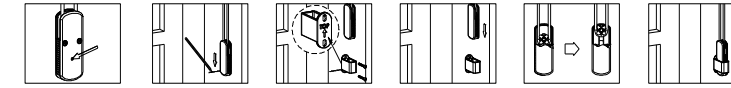
- **Important Notes:**
 - Ensure the cord is fully taut when installing the cord tensioner into the holder.
 - Leave at least 2" of space between the bottom of the holder and the window frame for easy removal of the cord tensioner.
 - If the cord becomes loose over time, press the cord tensioner downward to retighten it.
- **Installation Instructions:**
 - Press the locking point on the cord tensioner and pull it downward to release it from the slot. Mark the position of the bottom of the cord tensioner on the wall.
 - Secure the Holder:
 - Align the bottom of the holder with the marked position on the wall.
 - Attach the holder to the wall using the **provided 8 x 1 1/4" screws**.
 - Ensure the arrow on the back of the holder is pointing upward.
 - Press the locking point on the cord tensioner and push it into the holder. Pull the cord taut and release it from the slot to unlock the tensioner.

Note: The cord must be fully taut when the tensioner is installed into the holder.

Inside Mount



Outside Mount



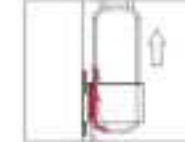
Removal Instructions

- Use a flat screwdriver to gently pry apart the interlocked teeth of the cord tensioner and its holder. Once the teeth are separated, pull the cord tensioner out of the holder.

Inside Mount

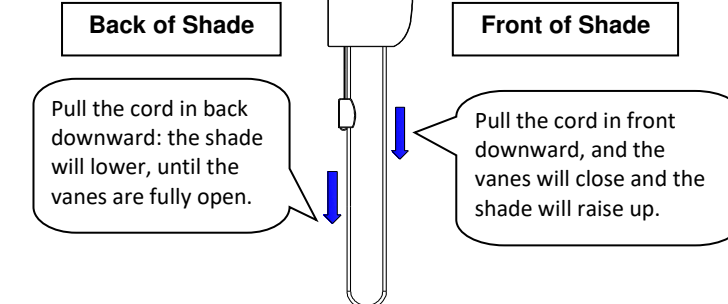
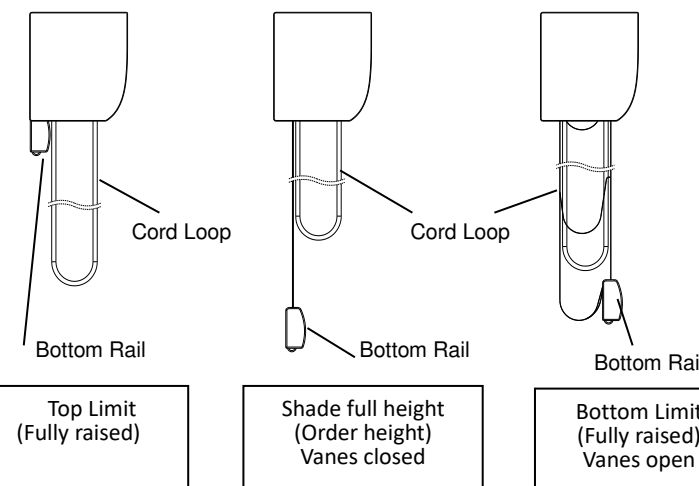


Outside Mount

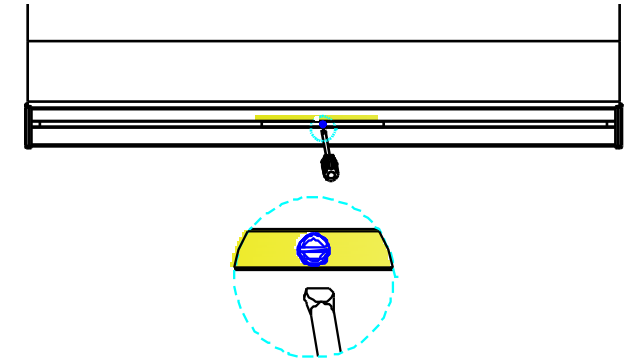


Sheer Shade Operation

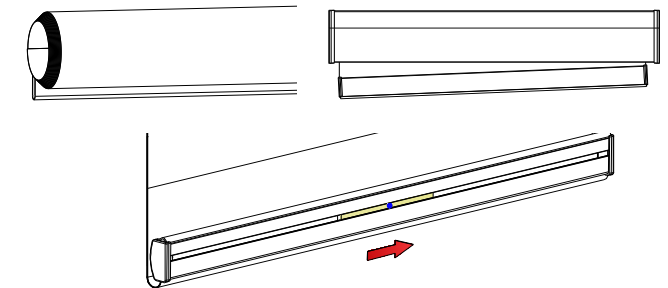
Continuous Cord Loop Operation



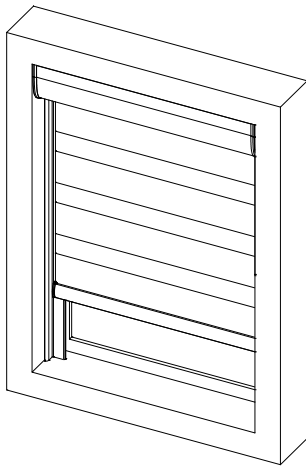
- If the shade is installed crookedly and it does not roll up correctly or if the bottom rail does not stay even, loosen the screw and adjust the counterweight on the back side of the bottom rail.



- If the fabric is moving toward the right or left side when rolling up, or if the right or left side of the bottom rail is higher than the other, flip up the bottom rail and slide the counterweight to the other side.



Light Guard System
Installation Instruction

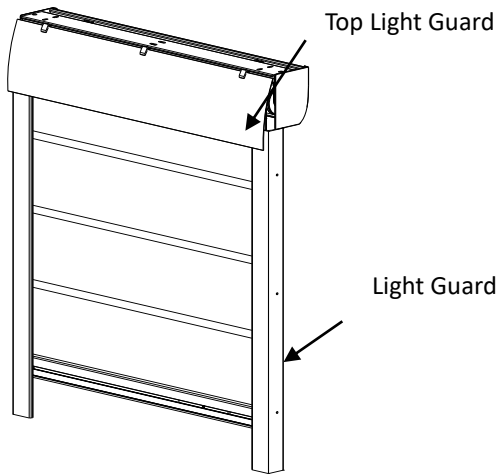
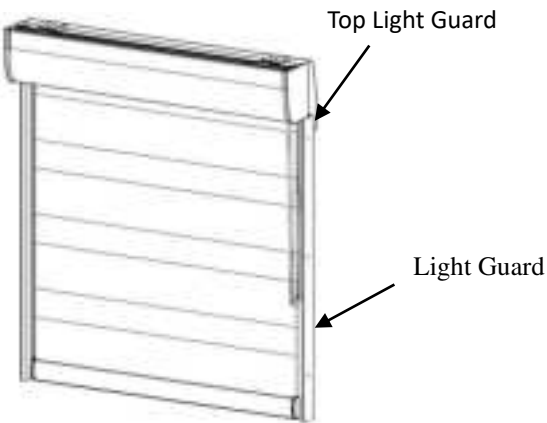


Note: please skip this step if there is no light guard.

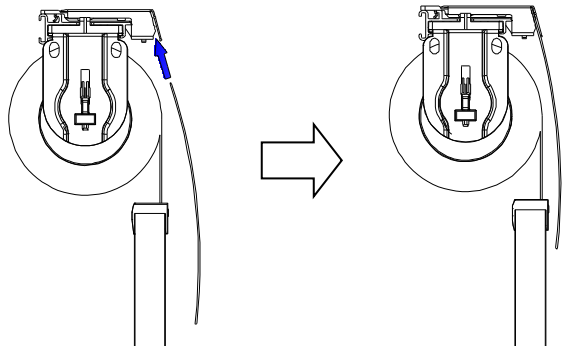
Hardware Included

Hardware	Drawing	Usage
3/4" Flat Head Screw		To install basic light guard

Installation of Top Light Guard

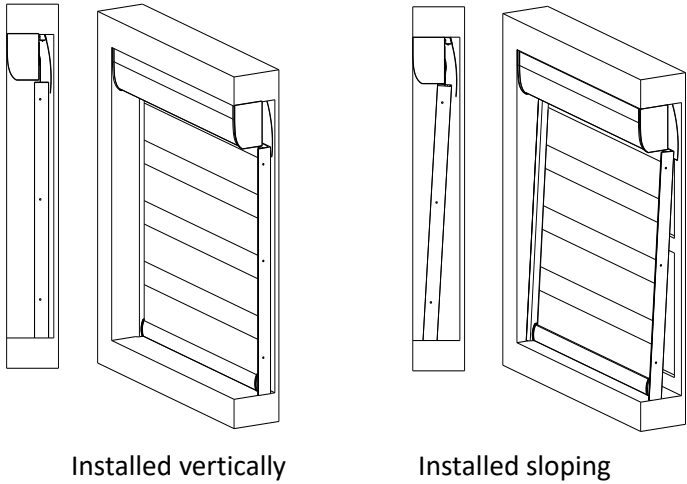


- **Install Top Light Guard**
Insert Top Light Block Piece into the mounting bracket.



Installation of Basic Light Guard

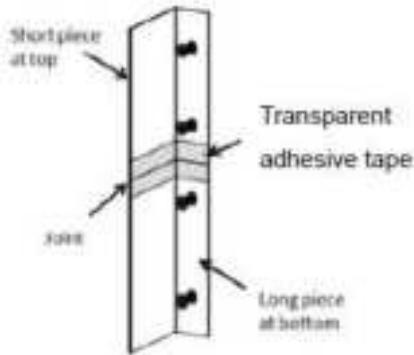
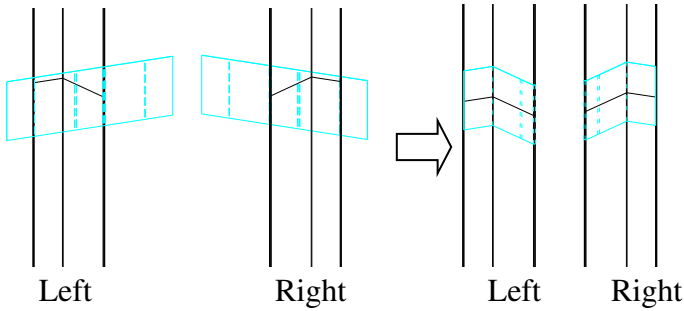
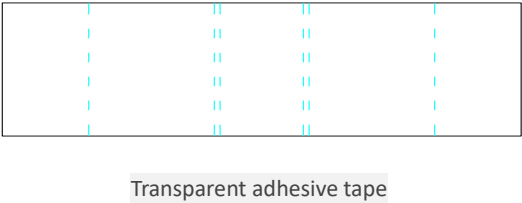
- Fully lower the shade down and place the wide side of light guard next to the back of shade fabric.
- For basic light guard, tear off the double-sided tape on the narrow side and stick the Light Guard to the window frame. To better ensure the basic light guard is fixed to the window, please use 3/4" flat head screws to secure the light guard with the pre-drilled holes.
- For better light blocking, the top of light guard should be placed next to the shade fabric and the bottom of light block is recommended to be installed sloping to the front.



Installation of Transparent adhesive tape

Transparent adhesive tape is needed for basic light guards that require splicing.

Installation: Align the double dotted line with the edge of the light guard, and fold the transparent adhesive tape on both sides, as shown in the figure below.

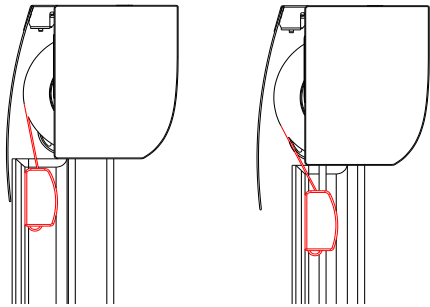


※Light Guard Installation Tips:

After the shade and top light block piece have been installed, place the side light guards next to the back of shade fabric, one for each side.

Before screwing in, please determine the position of the light guard and mark it with a pencil first and then install.

The wide side of the light guard needs to be next to the back of the shade fabric (as shown below in left drawing). Please do not push the light guard inwards (as shown below in right drawing), otherwise the shade will not raise or lower smoothly and the tops of side light guards will scrape the fabric.



Correct Position

Incorrect Position

N301086-J

Battery Motor with Charging Cord Motorized System

Information about Motorized System

NO.	Item	Specification
1	Power Source	Battery Motor with Charging Cord: Battery Power Li-ion batteries
2	Battery operating voltage range	4.2V~3.4V (Single cell)
3	Radio type	2.4G RF
4	Frequency band(s)	2415~2459MHz
5	Motor type	Brush DC motor
6	Charge type	Power Adapter: for battery motor with charging cord
7	Charging Time	< 3 hours
8	Charging Temperature	5°C/41°F ~ 35°C/95°F
9	Operating Temperature	0°C/32°F ~ 40°C/104°F
10	Relative Humidity	0% ~ 90% (Non-condensing)
11	Ave. Sound Level @1m	≤ 50dBA




Safety Precautions

Thank you for your purchase. Please review the instructions carefully before using the product, and save these instructions for future consultation.

- WARNING! Important safety instruction: It is critical for your safety and the safety of those around you to follow these instructions. Save these instructions.
- WARNING! The drive shall be disconnected from its power source during cleaning, maintenance and when replacing parts.
- The products may contain Lithium-ion batteries; the battery contains flammable materials such as organic solvents. Please read the Important Safety Precautions before using the product.
- Please recharge the batteries every 3-6 months to ensure optimal performance of batteries.
- Product operation is intended for temperatures between 0°C/32°F ~40°C/104°F.
- Please note that the limited warranty will be voided if the product is modified, dismantled or used in any manner other than its intended purpose.
- The accessories, including adapter and remote are designed to be used with our motorized shades. Do NOT use them for any other purpose.
- Please make sure the shade route is clear when operating to avoid danger or damage.
- In order to improve the user experience and functionality, the firmware and software of this product will automatically update from time to time.
- WARNING! For the purposes of recharging the battery, only use the detachable supply unit provided with this appliance.
🔌 Detachable supply unit (MX36W1-2401500U / UHVUE3036-240015SA / UHVUA3036-240015SA / UHVUK3036-240015SA)
- Do NOT disassemble the products or any of their components. They do not contain serviceable parts. Servicing of these products should be referred to qualified personnel.
- This appliance contains batteries that are only replaceable by a skilled personnel, trained authorized retailer or electrician.
- Do NOT operate the product with wet hands to avoid risk of electrical shock. The product needs to be powered off and disconnected from its power source during cleaning, maintenance and/or replacing parts.

- The appliance is not intended for use by persons (including children) with reduced physical, sensory or mental capabilities, or lack of experience and knowledge, unless they have been given supervision or instruction concerning use of the appliance by a person responsible for their safety. Children should be supervised to ensure that they do not play with the appliance.
- The appliance is only to be used with the power supply unit provided with the appliance.
- If the supply cord is damaged, it must be replaced by the manufacturer, its service agent or similarly qualified persons in order to avoid a hazard.
- WARNING: Important safety instructions. It is important for the safety of persons to follow these instructions. Save these instructions.
- WARNING: Important safety instructions. Follow all instructions, since incorrect installation can lead to severe injury
 - Before installing the drive, remove any unnecessary cords or components and disable any equipment not needed for powered operation.
 - The characteristics of the driven part must be compatible with the rated load and rated operating time.
 - The mass and the dimension of the driven part shall be compatible with the rated torque and rated operating time.
 - Fixed controls have to be clearly visible after installation.
- This appliance contains batteries that are only replaceable by a skilled person.
- Do NOT operate when maintenance, such as window cleaning, is being carried out in the vicinity.
- Do not allow children to play with fixed controls. Keep remote controls away from children.
- Frequently examine the installation for imbalance and signs of wear or damage to cables springs and fixings. Do not use if repair or adjustment is necessary.
- LpA ≤ 70 dB(A).



Check Components for Battery Motor with Charging Cord

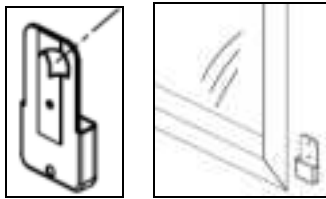
		
36W Adapter	Power Connector	Extension Cord(optional)

Remote



Remote Holder Installation

- A. Plaster Wall(Use installation screws)
1. Place the remote holder at the desired location, and use the pencil to mark the locations of the screws.
 2. Place the remote holder against the wall and use two 3/4" flat head screws to secure the remote holder.
- 
- B. Smooth Wall(Marble wall, Quartz wall, glass-Use adhesive sticker)
- For hard surfaces, such as marble, quartz, etc. It is recommended to use the double-sided foam tape provided.
- Tear off double-sided tape on the backside of the remote holder, and stick the remote holder to the desired location.
- 



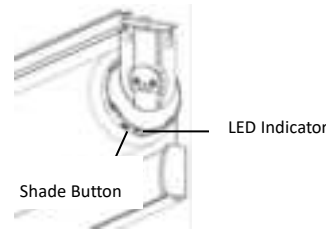
Charging the Shade of Battery Motor with Charging Cord

Warning!



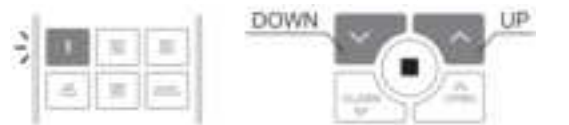
- Please charge the shade before use!
- Please DO NOT use the shade when charging.
- Please recharge your shade every 3~6 months to ensure optimal performance of batteries.
- Please only use the 36W AC Adapter included with this product. If using the extension cord, please DO NOT bend or twist the cord to avoid product damage or raise safety concerns.
- After charging, please store the 36W AC Adapter and extension cord for later use.

Battery Motor with Charging Cord Motorization Operation

For Shade with Battery Motor with Charging Cord Battery Power, press and hold the shade button for 3 seconds and the green light will flash for power on before operation.



Operating the Shade with the remote control

- Select the group number assigned to the shade.
 - Press OPEN to fully raise the shade.
If the shade is already in a vane open position, press OPEN once and the shade should fully close. Press OPEN once again to roll up the shade.
- 
- Select the group number assigned to the shade.
 - Press CLOSE to fully lower the shade.
Pressing CLOSE once will fully close the shade. Press CLOSE once again to open the vanes.
- 
- Select the group number assigned to the shade.
 - Press ⬆ or ⬇ to slightly adjust the shade height.
- 
- 🏠 : Move to Best View 🌑 : Stop the shade
★ : Move to My Favorite 🏠 : Move to Best Privacy

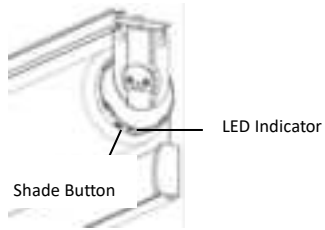
Operating the shade with the Shade Button

When the remote control is out of reach, the shade can be operated with the shade button.

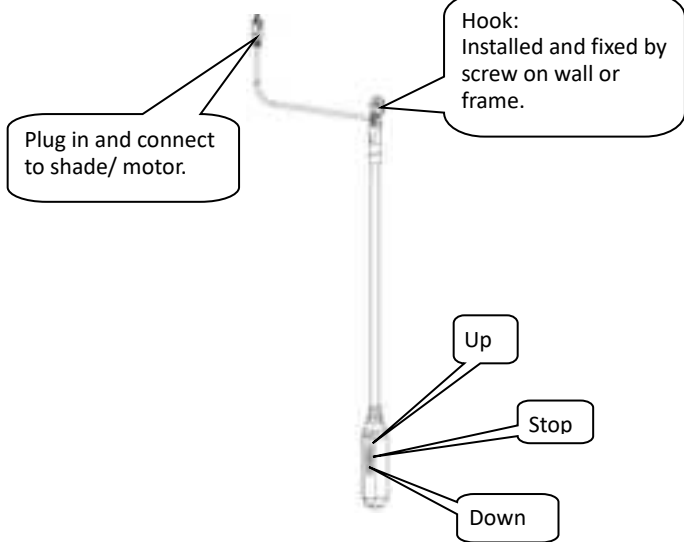
Press the button when the shade is still to raise or lower the shade.

Pressing the button while the shade is in motion will stop the shade's movement.

Pressing the button again will allow the shade is oerate in the opposite direction.





QuikClick™ Motorization Operation



N301086-J

TROUBLESHOOTING

Problem	Possible Cause	Description
No reaction upon operation	No Signal	Operate the shade by a remote and check the LED indicator on the shade. Green light blinks: The shade receives signal normally. Red light blinks: Low battery / Over temperature limit Red/Green light blinks: Other problems No light: Not receiving signal / Not paired with a Remote / The shade is powered OFF.
	Low battery of Remote	Please check if the remote group lights work normally, or replace new batteries.
	Low battery of Shade with Battery Motor with Charging Cord	Please use 36W adapter to charge the shade.
	The shade is not paired with the Remote	Press and hold the paired Group button and check if the shade responds. Shade response as shift x 1 means it has been paired. Shade no response means it needs to be paired first. Please refer to remote control manual" for pair steps.
	Over Temperature Protection	The shade might be overheated when the LED indicator on shade blinks red during operation. Please wait at least 30 minutes and operate the shade again. Please refer to the Specification for applicable operating temperature.
	The limits are not fully setup.	Press  /  on remote to operate the shade and check if the shade LED blinks green and the shade works normally. If not, the shade limits might not be fully set up for full functionality, please refer to remote control manual to set up shade limits again. IMPORTANT! Upper and Lower limits must be setup for full function of the shades.
Limits shift	Abnormal power failure	Abnormal power failure may cause a shift of limits, please refer to "Remote Control Manual" to set up limits again.
	Others	Please contact your customer service for further assistance.

SAFETY STATEMENT

Federal Communication Commission Interference Statement
This device complies with Part 15 of the FCC Rules. Operation is subject to the following two conditions: (1) This device may not cause harmful interference, and (2) this device must accept any interference received, including interference that may cause undesired operation.

This equipment has been tested and found to comply with the limits for a Class B digital device, pursuant to Part 15 of the FCC Rules. These limits are designed to provide reasonable protection against harmful interference in a residential installation. This equipment generates, uses and can radiate radio frequency energy and, if not installed and used in accordance with the instructions, may cause harmful interference to radio communications. However, there is no

guarantee that interference will not occur in a particular installation. If this equipment does cause harmful interference to radio or television reception, which can be determined by turning the equipment off and on, the user is encouraged to try to correct the interference by one of the following measures:

- Reorient or relocate the receiving antenna
- Increase the separation between the equipment and receiver.
- Connect the equipment into an outlet on a circuit different from that to which the receiver is connected.
- Consult the dealer or an experienced radio/TV technician for help.

FCC Caution: Any changes or modifications not expressly approved by the party responsible for compliance could void the user's authority to operate this equipment.

This transmitter must not be co-located or operating in conjunction with any other antenna or transmitter.
Industry Canada Equipment Standard for Digital Equipment (ICES) –Canada
This Class B digital apparatus complies with Canadian ICES-003. Cet appareil numérique de la classe B est conforme à la norme NMB-003 du Canada. CAN ICES-3 (B)/NMB-3(B)
Innovation, Science and Economic Development Canada(ISED) Compliance Statement
This device complies with ISED’s licence-exempt RSS standard(s). Operation is subject to the following two conditions: (1) this device may not cause interference, and (2) this device must accept any interference, including interference that may cause undesired operation of the device.

Le présent appareil est conforme aux CNR d’ ISED applicables aux appareils radio exempts de licence. L’exploitation est autorisée aux deux conditions suivantes : (1) le dispositif ne doit pas produire de brouillage préjudiciable, et (2) ce dispositif doit accepter tout brouillage reçu, y compris un brouillage susceptible de provoquer un fonctionnement indésirable.
Radiation Exposure Statement:
This equipment complies with FCC/ISED radiation exposure limits set forth for an uncontrolled environment. This equipment should be installed and operated with greater than 20cm between the radiator & your body.

Déclaration d'exposition aux radiations:
Cet équipement est conforme aux limites d'exposition aux rayonnements FCC/ISED établies pour un environnement non contrôlé. Cet équipement doit être installé et utilisé à plus de 20cm entre le radiateur et votre corps.

SAFETY INSTRUCTIONS FOR LITHIUM BATTERIES

The product may contain lithium-ion batteries; the battery contains flammable materials, such as organic solvents. Mishandling of the battery may cause fire, smoke, or explosion.
DANGER
Do not immerse the battery in any liquid, such as water, beverages, or other fluids.
Exposure to liquid may damage the battery or the battery pack. Damaging the battery may generate heat, smoke, catch fire, or explode.
Do not use or place the battery in or near an open flame, heater or high temperature areas (above 80°C or 176°F)), such as those near a microwave or other cooking appliance.
Subjecting the battery to high temperature or near electromagnetic radiation may damage the polyolefin separator and can cause short circuit. This may cause the battery to generate heat, smoke, catch fire, or explode.
About Charging: Do not use unauthorized chargers.
Only charge the battery within recommended conditions (e.g., temperature range, voltage, and current). Use of an unauthorized charger could cause the battery to generate heat, smoke, catch fire, or explode.
Do not attach or insert battery with polarity reversed.
If the battery does not easily fit into the charger or device, check the battery orientation. Do not force the battery into the compartment. If the battery is inserted incorrectly, the battery may generate heat, smoke, catch fire, or explode.
Do not connect the battery to an AC outlet or DC automotive plug.
The battery requires a specific charger. If the battery is connected directly to a power outlet, the battery may generate heat, smoke, catch fire, or explode.
Do not use the battery in equipment for which it was not intended.
If the battery is used in unapproved applications or systems, the battery may be damaged and generate heat, smoke, catch fire, or explode.
Keep the battery away from heat and fire.
Excessive heat will damage the battery and may cause it to generate smoke, catch fire, or explode.
Do Not connect the positive (+) and negative (-) terminals with a conductive

material. Do not carry or store the battery with any metal objects. If the battery is shorted, it may overheat and the battery may generate heat, smoke, catch fire, or explode.
Avoid excessive impact to the battery.
Impact beyond specification may damage the battery. This may cause the battery to leak, generate heat, smoke, catch fire, or explode.
Do not penetrate the battery with any sharp object.
If subjected to a hard strike or penetrated by an object, the battery may be damaged, thereby causing the battery to short-circuit. This may cause the battery to generate heat, smoke, catch fire, or explode.
Do not directly solder to the battery.
Soldering directly to the battery could melt the separator, damage the fume release vent or other safety mechanisms. This may cause the battery to generate heat, smoke, catch fire, or explode.
Do not disassemble the battery.
Disassembly or modification of the battery may damage the protection circuit. This may cause the battery to generate heat, smoke, catch fire, or explode.
Do not charge the battery near high temperature.
If the battery is charged while exposed to high temperature, the battery’s protection circuit may activate and prevent charging, or fail and cause the battery to generate heat, smoke, catch fire, or explode.
WARNING
Ingestion
Keep away from small children.
Keep the battery away from small children. If the battery or any of its component parts is swallowed, seek medical attention immediately.
Mixed Use
Do not mix with other batteries.
The battery should not be used with other batteries having a different capacity, chemistry, or manufacturer. Doing so could cause the battery to generate heat, smoke, catch fire, or explode.
Rust, Discoloration and Deformities
Do not use abnormal batteries.
Immediately stop using the battery if there are noticeable abnormalities, such as smell, heat, discoloration, or deformity. The battery may be defective and could generate heat, smoke, catch fire, or explode with continued use.
Charging Time
Stop charging if the charging process cannot be finished.
If the battery cannot finish the charging process within the specified time, halt the charging process. The battery may generate heat, smoke, catch fire, or explode.
Leakage -1
Do not use a leaking battery near open flame.
If the battery or liquid leaking from the battery has an irritating odor, the battery should be kept away from any open flame. If exposed to an open flame, the battery could ignite and explode.
Leakage -2
Do not touch a leaking battery.
If liquid leaking from the battery gets into your eyes or makes contact with your skin, immediately flush your eyes or skin with clean water and seek medical attention. If left untreated, it will cause significant eye or skin damage.
Transport
Pack the battery securely for transport.
To prevent short-circuit or damage during transport, securely pack the battery in a case or carton.
CAUTION
Exposure to Direct Sunlight
Do not use or leave the battery in a location exposed to excessive heat, such as in direct sunlight or in a car. Doing so could cause the battery to generate heat, smoke, catch fire, or explode. It may also cause the battery’s performance and life to deteriorate.
Use with other Equipment or Power
The battery pack has a protection circuit. Do not use the battery with other equipment or power as it may damage the protection circuit. If the protection circuit fails, the battery may generate heat, catch fire, smoke, or explode.
Charging Temperature Range
Only charge the battery between 5°C and 35°C. Charging outside of this temperature range may cause the battery to leak, generate heat, or result in serious damage. It may also cause the battery’s performance and life to deteriorate.
Charging Method
Read the user’s manual for proper product charging method.
First Time Usage
Please contact the supplier if the battery gives off an unusual odor, generates heat, or shows signs of rust prior to its initial use.
Flammable Materials
Do not charge or discharge near flammable materials. Doing so could result in

fire.
Handling of Exposed Contacts or Conductors
If the battery pack has a system interface consisting of stripped lead wires or exposed contact plates, handle with due care. Temporarily insulate exposed contacts and conductors with an insulator such as polypropylene tape or polyvinylchloride tape. Failure to do so could result in an electrical shock; a short circuit causing the battery to generate heat, smoke, catch fire, or explode; or the combustion of other materials.
Recycling
When disposing of the battery, recycle it according to local rules and regulations.

If you have any inquiries or need assistance, contact Customer Service at 1-800-666-1779.