

Stereo Headphones

Operating Instructions



Model: YY2983

The term "product" in this document refers to the unit or its accessories.

Reduction in the Use of Hazardous Substances in Electrical & Electronic Equipment (Applicable in Republic of India)

This product and its components, consumables, parts or spares comply with the hazardous substances restriction of India's E-Waste (Management) Rules. The maximum allowable concentrations of the restricted substances are 0.1% by weight in homogenous materials for Lead, Mercury, Hexavalent Chromium, Polybrominated Biphenyls (PBB) and Polybrominated Diphenyl Ethers (PBDE), and 0.01% by weight in homogenous materials for Cadmium, except for the exemptions specified in Schedule II of the aforesaid Rules.

High volume may adversely affect your hearing.

Do not use the unit while walking, driving, or cycling. Doing so may cause traffic accidents.

Do not use in hazardous areas unless the surrounding sound can be heard.

This product has magnet(s) which may interfere with pacemakers, programmable shunt valves for hydrocephalus treatment, or other medical devices. Do not place this product close to persons who use such medical devices. Consult your doctor before using this product if you use any such medical device.

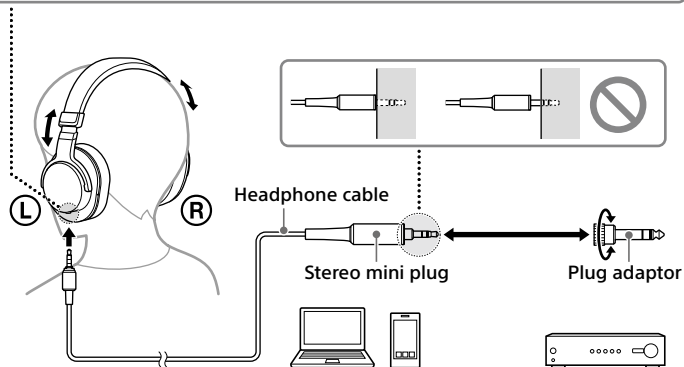
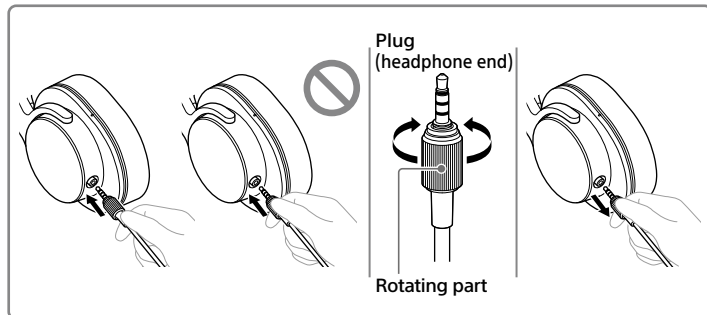
Note about static electricity

If you use the unit when the air is dry, you may experience discomfort due to static electricity accumulated on your body. This is not a malfunction of the unit. You can reduce the effect by wearing clothes made of natural materials that do not easily generate static electricity.



How to use

Grab the rubber part of the plug, insert the plug firmly until it clicks, then fasten the rotating part.



Specifications

Type:

Closed, dynamic

Driver unit:

40 mm

Power handling capacity:

1 500 mW (IEC*)

Impedance:

50 Ω at 1 kHz

Sensitivity:

102 dB/mW

Frequency response:

5 Hz - 80 000 Hz (JEITA)

Mass:

Approx. 216 g without cable

Included items:

Stereo Headphones (1)
Headphone cable (approx. 2.5 m, stereo mini plug) (1)
Headphone cable (approx. 1.2 m, stereo mini plug) (1)
Plug adaptor (stereo mini jack \leftrightarrow stereo phone plug)** (1)
Documents (1 set)

* IEC = International Electrotechnical Commission

** Attached to the headphone cable (2.5 m) at the factory

Design and specifications are subject to change without notice.

Precautions

Notes on wearing the unit

- Because the headphones achieve a tight seal over the ears, forcibly pressing them against your ears or quickly pulling them off can result in eardrum damage.
- Pressing the headphones against your ears may cause the speaker diaphragm to produce a click sound. This is not a malfunction.

Other notes

- When disconnecting the cable, pull it out by the plug, not the cable. Otherwise the cable may break.
- When connecting the cable, make sure to fully insert the plug into the jack. If the plug is not fully inserted, the sound may not be output.
- Do not subject the unit to excessive shock.
- Wipe the exterior clean with a soft, dry cloth.
- Do not apply weight or pressure to the unit for long periods, including when it is stored, as it may cause deformation.
- If you experience discomfort while using the unit, stop using it immediately.
- The earpads may be damaged or deteriorate with long-term use and storage.

Replacement parts: earpads
Please consult your nearest Sony dealer for information about replacement parts.

Location of the serial number label

