

Bowers & Wilkins

Px8  
Wireless  
Headphones

## Welcome to Bowers & Wilkins and Your Px8 Headphones

Thank you for choosing Bowers & Wilkins. When John Bowers first established our company, he did so in the belief that imaginative design, innovative engineering and advanced technology were keys that could unlock the enjoyment of audio in the home. His belief is one that we continue to share and inspires every product we design, tailored for new audio experiences outside of the home.

The Bowers & Wilkins Px8 are high performance over-ear headphones designed to deliver the highest quality mobile personal audio experience combined with the convenience of wireless operation and the serenity of noise-cancellation. This manual will tell you everything you need to know to get the most from your Px8 headphones.

Your Px8 can play music streamed wirelessly from your mobile phone, tablet or computer via Bluetooth, or conventionally connected by a jack cable to a suitable analogue headphone output. Px8 can also play audio via a USB connection from a computer and can be used for wireless telephony.

Px8 Real World Listening features include our latest innovations in Active Noise Cancellation, Ambient Pass-Through and enhanced Wear Sensing technologies. Our latest generation noise cancellation feature delivers an uncompromised listening experience. Ambient Pass-Through enables external sounds, such as conversation or safety announcements, to be heard clearly without any need to remove the headphones. The Wear Sensing feature enables Px8 to respond naturally, pausing and resuming the music simply by lifting either earpiece on or off your ear. These features can be enabled and further customised via the Bowers & Wilkins **Music** app, available for free on iOS and Android devices.

Px8 incorporates a rechargeable battery. When fully charged, depending on the degree of Bluetooth, Active Noise Cancellation and Ambient Pass-Through use, the battery pack can provide up to 30 hours of continuous wireless media streaming with noise cancellation enabled at average playback volume levels.

## 1. Px8 Carton Contents

Px8 over-ear wireless headphones  
Storage case  
USB-C to USB-C charging cable  
USB-C to 3.5 mm audio cable  
Document pack

## 2. Getting to Know Your Px8

We recommend installing the Bowers & Wilkins **Music** app on your iOS or Android device. This allows you to configure your headphones in detail and provides helpful hints and tips to make the most of your new headphones.



[bowerswilkins.com/downloadapp](https://bowerswilkins.com/downloadapp)

### 2.1 Switching Headphones On and Off

Diagram 1 illustrates power switch functionality.

#### Switching On

The power switch is located on the right earpiece. Slide the power switch up to the middle position. An audible cue will be played and the LED indicator will light up.

#### Switching Off

Slide the power switch to the bottom position. An audible cue will be played and the headphones will power down when the LED indicator is no longer lit.

#### Bluetooth Pairing

Slide the power switch to the upper position and hold for 5 seconds to enter Bluetooth pairing mode. Refer to section 6 for further information on pairing your headphones to a Bluetooth source.

### 2.2 Headphone Controls

Diagram 2 illustrates the headphone controls. The buttons on the right earpiece are used for media playback and telephony.

#### Media Playback

Function	Action
Play or pause	Press the Multi-function button once.
Play next track	Press the Multi-function button twice in quick succession. <i>Note: functionality dependent on source device.</i>
Play previous track	Press the Multi-function button three times in quick succession. <i>Note: functionality dependent on source device.</i>
Increase Volume	Press the Volume + button.
Lower Volume	Press the Volume - button.

#### Telephony

Function	Action
Answer an incoming call	Press the Multi-function button once.
End a call	Press the Multi-function button once.
Decline an incoming call	Hold the Multi-function button for 2 seconds.
Switch between two calls	With two calls active, press the Multi-function button twice.
Merge two calls	With two calls active, hold the Multi-function button for 1 second.
Toggle mute	While on a call, press the Multi-function button three times.

## 2.3 Status Indicator

The status LED indicator is located on the right earpiece, the table below explains the illumination states:

Illumination		Operational state
White		Battery charge > 30%
Amber		Battery charge between 30% and 10%
Red		Battery charge < 10%
Red flashing		Battery charge insufficient for headphone operation
Blue flashing		Pairing mode enabled
Blue (2 sec solid)		Pairing successful
Blue flashing (calls)		Incoming call
Green flashing		Rapid charging
Green solid		Battery charge full, trickle charging

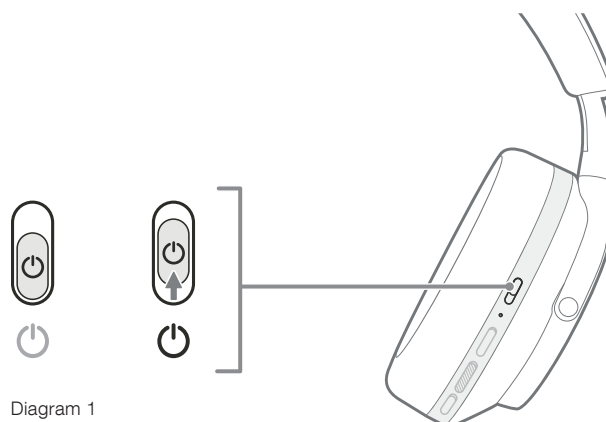


Diagram 1  
Power switch functionality

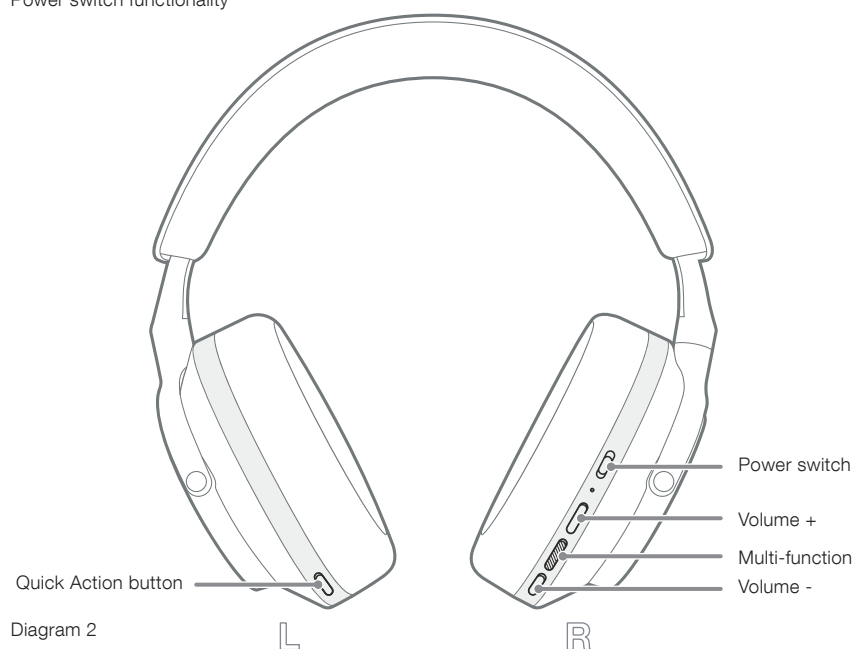


Diagram 2  
Headphone controls

### 3. Intelligent Features

#### 3.1 Environmental Controls

##### Active Noise Cancellation

Noise cancellation is a series of advanced technologies that aids in removing undesired noise from the surrounding environment. The Px8 headphones use built-in microphones to pick up and cancel out ambient sound for a more comfortable listening experience.

*Note: Noise cancellation requires a good seal between the headphones and your head for optimal performance.*

##### Ambient Pass-Through

Px8 also features an ambient "Pass-Through" mode, which allows in some external sound from the surrounding environment, allowing safety announcements or conversations to be heard without taking the headphones off.

By default, the Quick Action button on the left earpiece will cycle through the following modes, but the button can be customised from the Bowers & Wilkins **Music** app. See Diagram 2 for button location.

- Noise Cancelling On
- Pass-Through On
- Noise Cancelling and Pass-Through Off

#### 3.2 Voice Assistance

Your connected device's voice assistant can be assigned to the Quick Action button on the left earpiece from the Bowers & Wilkins **Music** app. See Diagram 2 for button locations and section 8.2 on using the Bowers & Wilkins **Music** app.

#### 3.3 Wear Sensors

##### Power Saving

Px8 incorporates our latest enhanced wear detection sensors in both earpieces (see Diagram 3), enabling intelligent battery conservation by pausing media playback and entering low power standby mode when removed from the head. When worn again, Px8 automatically wakes and connects to the last connected Bluetooth device.

##### Playback Control

During media playback, Px8 will automatically pause when either earpiece is lifted from the ear. If playback has been paused, placing the earpiece back on the ear will resume playback.

The standby timer and wear sensor features can be adjusted from the Bowers & Wilkins **Music** app.

*Note: Take care when wearing your headphones; hair or accessories trapped between your ears and the earpieces, or wearing glasses that distort the profile of your ears, may interfere with the performance of the wear sensors.*

### 4. Battery Charging and Power Saving

Your Px8 comes with the battery partially charged and may be used immediately. For best practice we recommend you fully charge the headphones before first use. Please allow up to 2 hours to fully charge. The headphones can be used while charging.

To charge:

1. Use the supplied USB-C cable and connect one end to a wall charger or powered computer port.
2. Connect the other end of the cable to the USB-C socket on the headphone's right earpiece.

*Note: During charging, the headphone indicator will flash green. When fully charged, the indicator will remain illuminated. See section 2.3 for status indicator details.*

### 5. Wearing Your Headphones

Wearing your headphones correctly will help ensure the best possible experience. See Diagram 5.

1. Identify the left and right earpieces by finding the identification legends located on the interior of each earpiece.
2. Wear the headphones accordingly with the headband adjusted so that they rest comfortably on your head.

*Note: Wearing glasses that distort the profile of your ears may interfere with headphone performance. Similarly, hair trapped between your ears and the headphone earpieces may interfere with the wear sensor performance.*



Diagram 3  
Wear sensor location

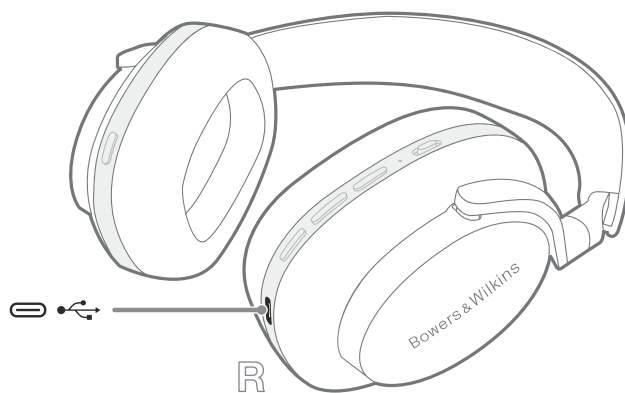


Diagram 4  
USB-C cable connection

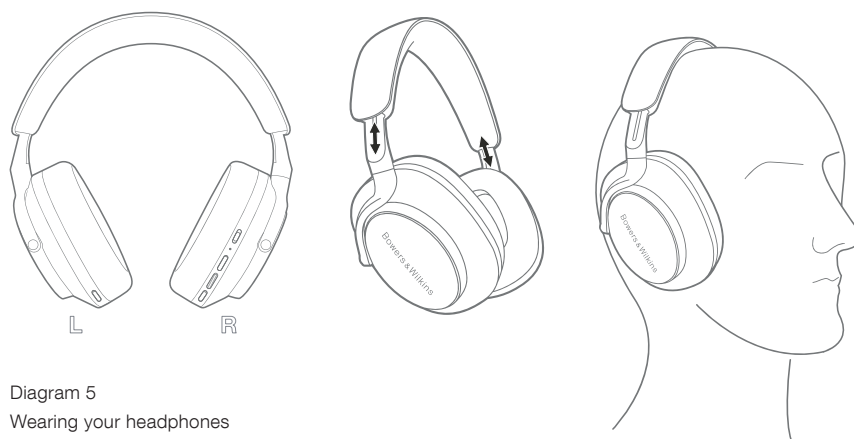


Diagram 5  
Wearing your headphones

## 6. Bluetooth Connection

### 6.1 Pairing

Your Px8 headphones are designed to stream media wirelessly from Bluetooth audio devices, such as smartphones, tablets or personal computers. To do so, the headphones and source audio device must first be paired.

#### 6.1.1 Pairing iOS System with Bowers & Wilkins Music App Installed

We recommend adding your headphones to the Bowers & Wilkins **Music** app. This allows you to configure your headphones in detail and provides helpful hints and tips to make the most of your new headphones. Please refer to section 8 for details on installing and using your headphones with the Bowers & Wilkins **Music** app.

During the process of connecting your headphones to the app for the first time, you will also be prompted to pair the headphones as an audio accessory. Tap on the confirmation popup to complete the pairing process.

#### 6.1.2 Pairing Android Devices Supporting Google Fast Pair Service (GFPS)

*Note: Compatible with Android devices running Marshmallow 6.0+.*

To add your headphones:

1. Switch on your headphones and place them no further than 10 cm (4 inches) away from your Android device (with Bluetooth enabled).
2. The first time you switch on your headphones, Bluetooth pairing mode will be enabled, the indicator will flash blue. If pairing mode is not enabled, please slide and hold the power switch to the upper (Bluetooth icon) position for 5 seconds, let go when the indicator blinks blue and an audible cue is heard.
3. A GFPS (Google Fast Pair Service) notification will pop up showing that your device has been detected and request to start the pairing process.
4. Press the **Connect** button to enable pairing; successful connection will be shown in popup.
5. Once paired, the popup will direct you to the Google Play store to install the Bowers & Wilkins **Music** App.

### 6.1.3 Pairing All Other Devices

1. The first time you switch on your headphones, Bluetooth pairing mode will be enabled, the indicator will flash blue. If pairing mode is not enabled, please slide and hold the power switch to the upper (Bluetooth icon) position for 5 seconds, let go when the indicator blinks blue and an audible cue is heard.
2. Ensure the Bluetooth feature is enabled on the audio device, Px8 will appear in the discovery list; select it to pair.
3. The indicator will flash blue while pairing is in progress, this will change to solid blue and an audible cue will play when pairing is successful.

Your headphones will remember up to eight paired Bluetooth devices. Repeat the above steps to pair more devices.

*Note: Your headphones will automatically exit Bluetooth pairing mode if no device is paired within 5 minutes. If pairing fails, the indicator will rapidly flash blue; please try pairing again.*

## 6.2 Multiple Bluetooth Connections

Px8 can be paired with up to two devices simultaneously but note that you can only play audio or take calls from one device at a time.

To switch between two devices:

1. Pause audio on the first device, or use the Px8 Multi-function button.
2. Play audio from the second device and the headphone will automatically switch over.

When streaming audio, receiving a call on the second device will automatically pause playback on the first device and the call will be routed to your headphones.

You can manage connections in further detail using the Bowers & Wilkins **Music** app.

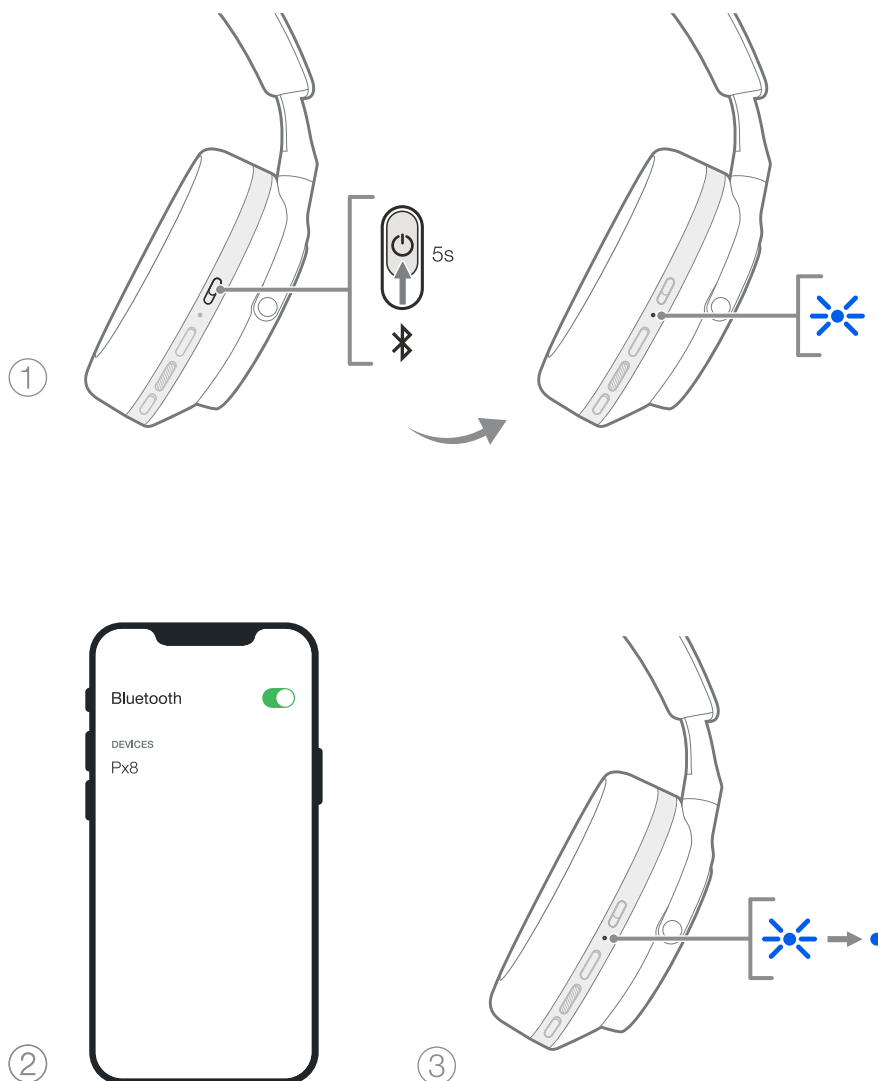


Diagram 6  
Bluetooth pairing

## 7. Auxiliary Connection

In addition to Bluetooth, your Px8 can also connect to audio sources using the supplied 3.5 mm audio or USB cables.

### 7.1 Connecting with the 3.5 mm Audio Cable

The 3.5 mm audio cable enables your Px8 to be used with a device supporting an analogue output, such as a conventional headphone socket on aeroplanes, smartphones or a traditional hi-fi system.

1. Insert the supplied USB-C to 3.5 mm audio cable into the headphone's USB-C socket on the right earpiece.
2. Insert the other end into the appropriate socket on your device.
3. Your Px8 will automatically disconnect from any Bluetooth devices.

*Note: Your headphones must have sufficient charge and be switched on to play audio from an analogue source device. The volume and play/pause buttons will not function when you are using the 3.5 mm interface.*

### 7.2 Connecting with the USB Cable

The USB connection enables your Px8 to function as a USB sound output device when connected to a capable computer.

1. Insert one end of the supplied USB-C to USB-C cable into the Px8 USB-C socket on the right earpiece.
2. Insert the other end into the appropriate socket on your computer.
3. Px8 will automatically disconnect from any Bluetooth devices.
4. Find and select your headphones from the computer's audio output control panel.

*Note: The headphone battery will also charge when connected to a capable USB port.*

## 8. Bowers & Wilkins Music App

The Bowers & Wilkins **Music** app is available for free on iOS and Android devices and provides extended setup and adjustments to features such as Active Noise Cancellation, Ambient Pass-Through and EQ settings. The app also provides further functions such as device naming, connection management and headphone software updates.



[bowerswilkins.com/downloadapp](https://bowerswilkins.com/downloadapp)

### 8.1 Connecting Your Headphones to the App

To set up your headphones in the app:

1. From your Android or iOS device, download and install the Bowers & Wilkins **Music** app.

2. Ensure your headphones are switched on.
3. Launch the app, then read and follow the instructions pertaining to app notification and permissions.
4. The app should detect your headphones automatically and invite you to set up your headphones; follow the in-app instructions to complete the setup process.
5. If your headphones are not detected automatically, navigate to the Settings page (⚙ icon), tap **App product** and follow the in-app instructions.

### 8.2 Controlling Your Headphones

Commonly used features of your headphones are accessible directly on the app homepage:

- Battery status
- Environmental controls (Noise Cancellation, Pass-Through)
- Device connections (refer to the Connections section below for further details)

#### 8.2.1 Headphone Settings Page

Other settings can be adjusted from the Settings page. Tap the ⚙ icon at the bottom of the screen to enter the Settings page, then select your headphones from the list.

#### Environmental Controls

Set the desired environmental control from the following options:

- Noise Cancelling On
- Pass-Through On
- Noise Cancelling and Pass-Through Off

#### EQ

Use the **Treble** and **Bass** sliders to customise the tone of your headphones.

#### Connections

The two most recently connected Bluetooth devices are shown in the **Connections** shortcut buttons. The buttons will appear grey if not currently connected. Tap the buttons to attempt reconnection. If only one device is shown, tap **ADD DEVICE** to place the headphones into Bluetooth pairing mode to pair them with a new device.

Tap the **CONNECTIONS** heading to view more detailed connection settings, including previously connected devices (Px8 will remember up to eight devices).

Once in the Connections page, swipe a device left to delete a device from the list. Swipe a device right to make it the preferred device to connect to when the headphones are switched on.

Toggle **Auto-connect to last device** to prompt the headphones to connect to the previously connected device when they are switched on.

Tap **PAIR A NEW DEVICE** to place the headphones into Bluetooth pairing mode and pair them with a new device.

#### Quick Action Button

The left earpiece of your headphones features a button that provides quick access to commonly used functions. Customise the function of this button from the app.

- Environmental Controls – each press of the Quick Action Button cycles through:
  - Noise Cancelling On
  - Pass-Through On
  - Noise Cancelling and Pass-Through Off
- Voice Assistant – press the Quick Action Button to activate your device's voice assistant.



Diagram 7  
Connecting the 3.5 mm audio cable

## Device Management

Toggle **Auto standby** on to place the headphones into a power-saving state after 15 minutes of inactivity.

Toggle **Wear sensor** on to enable intelligent playback control; lift an earpiece or remove your headphones to pause playback. Place them back on your ears to resume playback.

### Rename product

Tap **Rename product** to choose a new Bluetooth name for your headphones. Note that devices already paired with the headphones may still reference the previous name.

## 8.3 Headphone Software Updates

Bowers & Wilkins will occasionally make available software updates that refine and optimise the performance of your headphones or add new features. The Bowers & Wilkins **Music** app will notify you when a software update is available. Tap on the notification and then follow the in-app instructions.

## 9. Power Cycle and Reset

**The reboot/reset process may generate noise in the headphones – do not wear during this process.**

### 9.1 Power Cycle

To reboot your Px8, remove the headphones from your head and remove any cables from the headphones. Simultaneously hold the Volume + and Volume - buttons for 10 seconds until the indicator LED extinguishes. Release the buttons when the indicator lights up again. Rebooting your headphones will not reset their internal settings or clear the paired device history.

### 9.2 Factory Reset

You can clear the paired device history and restore all settings to their factory defaults. Remove the headphones from your head and remove any cables from the headphones. With Px8 powered on, simultaneously hold the Volume +, Volume - and left earpiece Quick Action button for 10 seconds until the indicator LED extinguishes. Release the buttons when the indicator lights up again; the headphones will be ready to pair to a device. Alternatively, you can perform a factory reset from the headphone's settings page of the Bowers & Wilkins **Music** app.

## 10. Care & Maintenance

### 10.1 Storing Your Headphones

Taking care of your Px8 will ensure they continue to deliver the best performance and experience.

When you are not using your headphones, stow them in the included storage pouch. It is recommended the headphones are first powered off.

1. Retract the headband on each side so they are in the smallest position.
2. With the buttons facing you, rotate the earpieces inwards so they lay flat.
3. Place the headphones into the storage case.

## 10.2 Cleaning Your Headphones

It is advised that you clean your headphones regularly. Your Px8 can be cleaned by a soft, damp microfiber cloth, gently wipe or dab clean.

The fabric on Px8 has been specially coated with moisture and stain repellent. If dirt, stain or fibre residue accumulate on the fabric surface, please clean as instructed above.

- Do NOT aggressively rub or use an abrasive tool to clean, especially the fabric or leather.
- Do NOT use paper towels, napkins or tissue as they will leave residue.
- Do NOT use cleaning detergents, soapy water, polish or chemical cleaners.
- Ensure that no moisture get inside the earpieces, buttons and interface ports.

## 11. Support

Should you require further help or advice regarding your Px8, please visit the Bowers & Wilkins support site: [www.bowerswilkins.com/support](http://www.bowerswilkins.com/support).

### 11.1 Environmental Information

This product complies with international directives, including but not limited to the Restriction of Hazardous Substances (RoHS) in electrical and electronic equipment, the Registration, Evaluation, Authorisation and restriction of Chemicals (REACH) and the disposal of Waste Electrical and Electronic Equipment (WEEE). Consult your local waste disposal authority for guidance on how properly to recycle or dispose of this product.

## Specifications

Wearing Style	Bluetooth Wireless Over-Ear Headphones
Technical Features	Active Noise Cancellation Ambient Pass-Through Wear-Detection Sensor Bluetooth® audio - Bluetooth 5.2 with aptX™ Adaptive USB-C charging & audio interface
Bluetooth Codecs	aptX™ Adaptive aptX™ HD aptX™ AAC SBC
Bluetooth Profiles	A2DP AVRCP HFP HSP BLE GATT (Generic Attribute Profile)
Drive Units	2 x ø 40 mm dynamic full range custom carbon driver
Microphones	4 x mics for ANC 2 x mics for telephony
Input Impedance	33 Ω
Distortion (THD)	<0.1% (1 kHz/10 mW)
Battery Type	Rechargeable Lithium Ion
Battery Life & Charging	30 hrs Bluetooth with ANC, 7 hrs with 15 min charge, 2 hrs for full charge
Inputs	Bluetooth, USB-C audio
In Box Accessories	1.2 m USB-C to 3.5 mm stereo jack audio cable 1.2 m USB-C to USB-C cable Carrying case
Weight	320 grams without case



# Px7 S2 and Px8 Quick Start Guide



Bowers & Wilkins

### Set-up could not be easier:

Just download the App using the link below and follow the instructions.

### La configuration ne peut pas être

**plus simple :** il suffit de télécharger l'application en utilisant le lien ci-dessous et de suivre les instructions.

### Das Setup könnte nicht einfacher sein:

Laden Sie sich einfach die App mit Hilfe des Links herunter und folgen Sie den Anweisungen.

**セットアップ簡単です。**以下のリンクを使用してアプリをダウンロードし、指示に従ってください。

### La configuración no podría ser

**más fácil:** basta con que descargue la App utilizando el enlace que figura a continuación y siga las instrucciones.

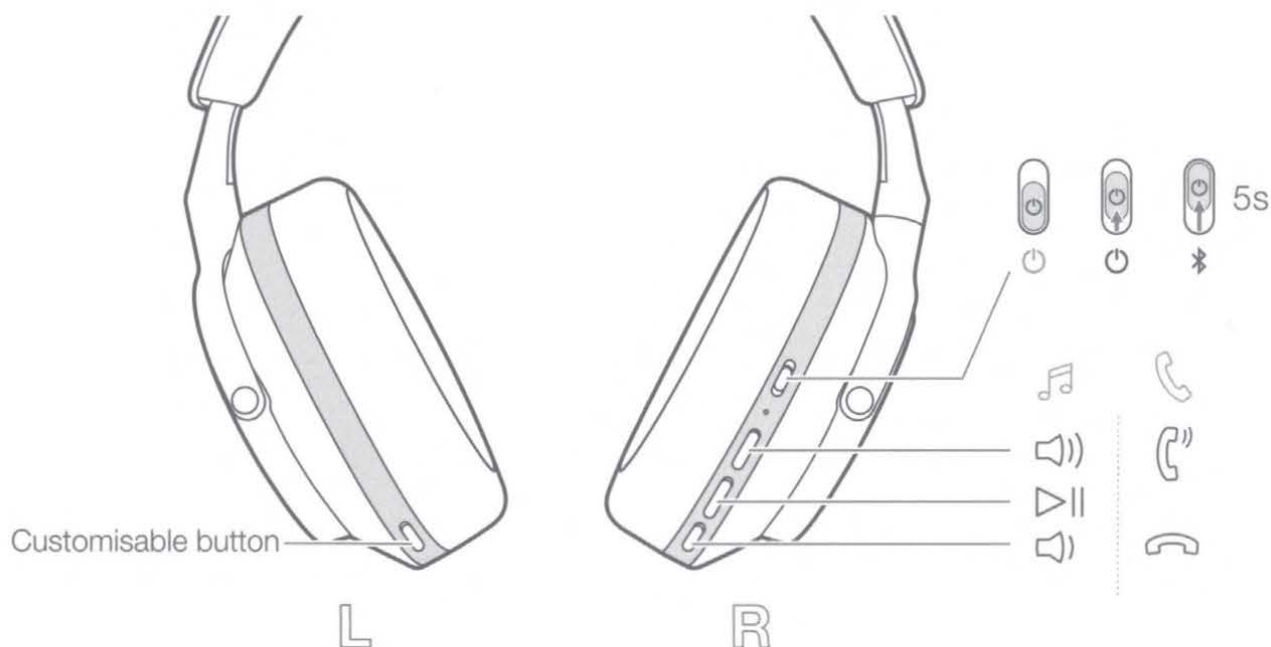
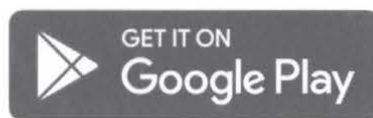
### La configurazione non potrebbe

**essere più semplice:** scarica l'app usando il link sotto e segui le istruzioni.

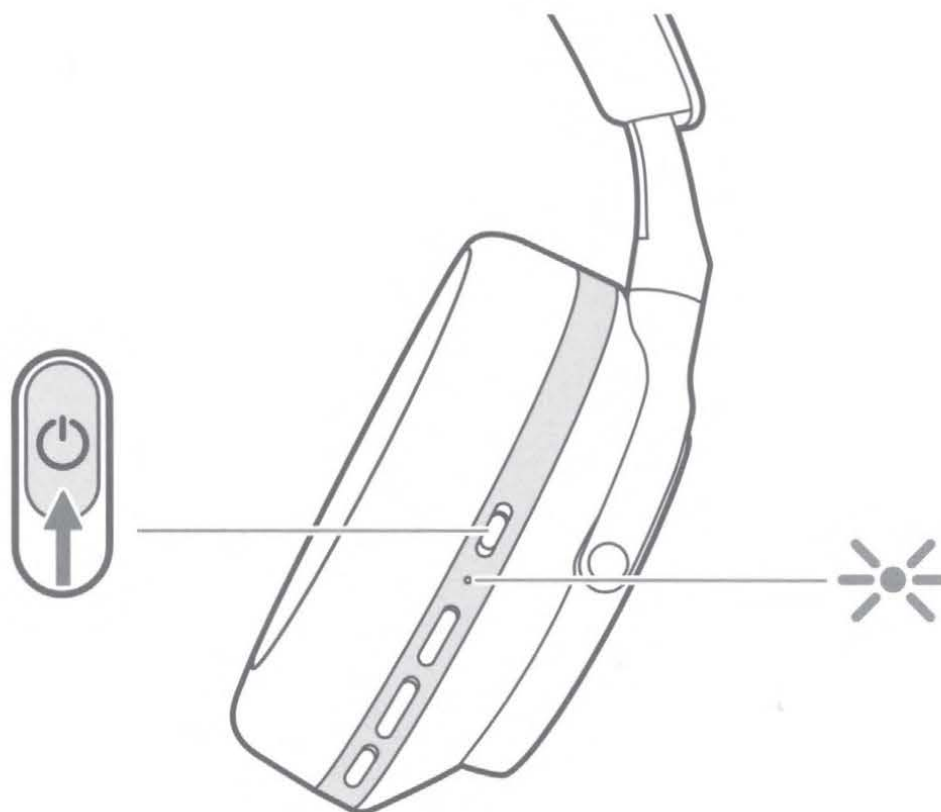
**设置便捷:** 只需扫描二维码下载应用程序, 并按照说明操作即可。



[bowerswilkins.com/downloadapp](https://bowerswilkins.com/downloadapp)



①



②



iOS 12+



Android 6.0+

## Fast Pair

In one tap, Px7 S2 and Px8 enable quick, effortless Bluetooth pairing with your Android\* devices.

\*Android phones running Marshmallow and above/6.0+.



Les Px7 S2 et Px8 permettent un couplage Bluetooth rapide et sans effort avec vos appareils Android\*.

\*Téléphones Android avec Marshmallow 6.0+.

Px7 S2 und Px8 ermöglichen eine schnelle und mühelose Bluetooth-Kopplung mit Ihren Android\*-Geräten.

\*Android-Handys mit Marshmallow und höher/6.0 +.

Px7 S2 y Px8 permiten el emparejamiento Bluetooth rápido y sin esfuerzo con sus dispositivos Android\*.

\*Teléfonos Android con Marshmallow 6.0+.

Px7 S2 e Px8 consentono un accoppiamento Bluetooth rapido e senza sforzo con i tuoi dispositivi Android\*.

\*Compatibile con Android Marshmallow 6.0+.

Px7S2とPx8は、ワンタップで素早く簡単にBluetoothペアリングが可能になります。

\*マッシュマロカ/6.0以上を搭載したAndroid携帯電話。

只需轻轻一按, Px7 S2和Px8即可实现 与Android设备 快速、轻松的蓝牙配对。

\*适用于Android手机系统6.0及以上版本。

B&W Group Ltd  
Dale Road  
Worthing West Sussex  
BN11 2BH England

EU Importer:  
Bowers & Wilkins  
Beemdstraat 11  
5653 MA Eindhoven  
The Netherlands

Copyright © B&W Group Ltd. E&OE

II15946 / 2



Pour en savoir plus :  
[www.quefairedemesdechets.fr](http://www.quefairedemesdechets.fr)





Bowers & Wilkins



**Px8 McLaren Edition**  
**Over-Ear Noise Cancelling Wireless Headphones**

Technical Information



## Technical Features

Hybrid Noise Cancellation  
Ambient Pass-Through  
Wear-Detection Sensor  
Bluetooth® audio - Bluetooth 5.2  
with aptX™ Adaptive  
USB-C charging & audio interface

## Wearing Style

Bluetooth Wireless Over-Ear Headphones

## Bluetooth Codecs

aptX™ Adaptive  
aptX™ HD  
aptX™  
AAC  
SBC

## Bluetooth Profiles

A2DP  
AVRCP  
HFP  
HSP  
BLE GATT (Generic Attribute Profile)

## Drive Units

2 x ø 40mm dynamic full range custom  
carbon driver

## Microphone

4x mics for ANC  
2x mics for telephony

## Distortion

<0.1% (1kHz/10mW)

## Battery Type

Rechargeable Lithium Ion

## Battery Life

30 hours playback

## Charge

USB-C

## Charge Time

2 hours  
15 min charge for 7 hours battery life

## Inputs

Bluetooth, USB-C Audio

## In-box Accessories

1.2m USB-C to 3.5mm stereo jack audio cable  
1.2m USB-C to USB-C cable  
Carry Case

## Dimensions (Carry Case)

189mm (w) x 63mm (d) x 233mm (h)

## Weight

320g (without carry case)



## Px8 McLaren Edition Over-Ear Noise Cancelling Wireless Headphones

Technical Information

[bowerswilkins.com](https://www.bowerswilkins.com)


Manufactured under license from McLaren Automotive Limited.  
The McLaren name and logo are registered trademarks of McLaren.



Px8

# Safety & Warranty

## English – Important safety instructions

- 1 Read these instructions.
- 2 Keep these instructions.
- 3 Heed all warnings.
- 4 Follow all instructions.
- 5 Clean only with a dry cloth.
- 6 Only use attachments/accessories specified by the manufacturer.
- 7 Ensure that the headphones are not worn with, or kept in the immediate vicinity (closer than 10cm) of, a pacemaker.
- 8 Do not insert headphone jack plugs into electric power sockets.
- 9 Always supervise children using these headphones.
- 10 The operation of switches on your hi-fi system, or the action of plugging-in the headphones, may cause audible clicks which, at high volume levels, may affect your hearing. Always therefore set the volume control to minimum before operating switches or plugging-in the headphones.
- 11 Do not use headphones while driving or cycling.
- 12 Contains small parts which may be a choking hazard. Not suitable for children aged 3 or under.
- 13 This product contains magnetic material.
- 14 Do not drop, sit on, or allow headphones to be immersed in water.
- 15  Prolonged listening at high volume levels may cause hearing damage.
- 16 This product is only designed to work at an ambient temperature of up to 40°C.
- 17 This product contains Lithium batteries, if misused or damaged this can become a hazard and is at risk of explosion.
- 18 Do not handle the product should the battery leak.
- 19 Do not incinerate the product or leave it in an extremely high temperature surrounding environment. This could result in the internal battery exploding or the leakage of flammable liquid or gas.
- 20 Do not subject the product to extremely low air pressure. This could result in the internal battery exploding or the leakage of flammable liquid or gas.
- 21 Do not attempt to access or replace the product's battery; the battery is internal and not user serviceable.
- 22 Refer to the product manual for information on battery care.
- 23 **Do not expose the product to rain or moisture.**
- 24 **Do not use the product near water, bathtubs, sinks, saunas, pools or steam rooms.**
- 25 Turn off the product before boarding aircraft.
- 26 Do not position or store the product or accessories on or near a vehicle air bag; should the airbag exploded there is a risk of injury.
- 27 Dispose of this product in accordance with local regulations. This product must not be disposed of with regular household waste. Disposal of a battery into fire or a hot oven, mechanically crushing or cutting of a battery can result in an explosion.

Compliance markings are located underneath the left and right removable ear cushions.

For skilled person: CAUTION: Danger of explosion if battery is incorrectly replaced. Replace only with the same or equivalent type. Replacement of a battery with an incorrect type can defeat a safeguard.

## Warranty

Bowers & Wilkins products are designed and manufactured to the highest quality standards. However, if something does go wrong with the product, B&W Group Ltd. and its national distributors warrant free of charge labour (exclusions may apply) and replacement parts in any country served by an official Bowers & Wilkins distributor.

This warranty complements any national or regional legal obligations of dealers or national distributors and does not affect your statutory rights as a customer. Some regional legal obligations outside the control of B&W Group Ltd. may reduce the scope or time of the terms outlined below. In particular:

- Special warranty terms apply in the Russian Federation.
- Specific import regulations apply in Brazil.
- See reverse of document for specific warranty instructions that apply in Australia.

Please contact the relevant national distributor for details.

### Terms and Conditions

This warranty:

- 1 is valid only for products purchased from an authorised Bowers & Wilkins retailer or dealer.
- 2 is valid from the date of purchase for a period of five years for passive loudspeakers and two years for powered loudspeakers, electronics and headphones, except that exclusions apply in certain countries in line with national law. Please consult the Bowers & Wilkins distributor in your country for detailed information.
- 3 is limited to the repair of the equipment. Neither transportation, nor any other costs, nor any risk for removal, transportation and installation of products is covered by this warranty.
- 4 is only valid for the original owner. It is not transferable.
- 5 will not be applicable in cases other than defects in materials and/or workmanship at the time of purchase and will not be applicable:
  - a for deterioration of component parts, the nature of which is to become worn or depleted with use, such as batteries and headphone ear pads.
  - b for any interoperability issues with third party products; unless we explicitly specify this intent,
  - c for damages caused by incorrect installation, connection or packing,
  - d for damages caused by any use other than correct use described in the user manual, negligence, modifications, or use of parts that are not made or authorised by B&W Group Ltd.,
  - e for damages caused by faulty or unsuitable ancillary equipment,
  - f for damages caused by accidents, lightning, water, fire heat, war, public disturbances or any other cause beyond the reasonable control of B&W Group Ltd. and its appointed distributors,
  - g for products whose serial number has been altered, deleted, removed or made illegible,
  - h if repairs or modifications have been executed by an unauthorised person.

### How to claim repairs under warranty

Should you have any concerns regarding the performance of your product, please use the following procedure:

- 1 You can find all contact details by clicking on 'Contact Bowers & Wilkins' at the bottom of the home page of our web site and selecting the appropriate country.
- 2 Our representative will discuss your concerns. If it is found necessary to return the product for repair, you may be given a Return Merchandise Authorisation. You should not return the product without this authorisation, if given.

To validate your warranty, you will need to produce the original sales invoice or other proof of ownership and date of purchase.

### Environmental Information

This product complies with international directives, including but not limited to:

- i. the **Restriction of Hazardous Substances (RoHS)** in electrical and electronic equipment,
- ii. the **Registration, Evaluation, Authorisation and restriction of Chemicals (REACH)**
- iii. the disposal of **Waste Electrical and Electronic Equipment (WEEE)**.

Consult your local waste disposal authority for guidance on how properly to recycle or dispose of this product.



## Australia – Warranty

Subject to the following terms, Sound United will repair or replace any part of any eligible Bowers & Wilkins product that is defective within the warranty period indicated in the table below or refund you the cost of the replacement. The benefits to a consumer given by this warranty are in addition to other rights and remedies of the consumer under a law in relation to the goods or services to which the warranty relates.

### Eligibility

To claim the benefit of this warranty you must;

- 1 Be the original purchaser of a genuine Bowers & Wilkins product (this warranty is not transferable)
- 2 Produce proof of your purchase
- 3 This warranty is limited to defects that arise;
  - a in the course of normal domestic installation and use and
  - b within the warranty period identified for the product in the table below, commencing on the date of original purchase.
- 4 This warranty excludes;
  - a defects arising from misuse, accident, neglect or improper care, fluctuation in electrical current, incorrect or failed software upgrade, damage or malfunction from incorrect assembly or installation, defects from alteration or modification, unauthorised service or repair;
  - b appearance items such as cabinetry marks or damage;
  - c products on which the serial number has been defaced or removed; and
  - d claims made later than 21 days after the defect first appears.
- 5 Note: In making a claim under this warranty, you agree that If, following receipt of your claim under this warranty, Sound United or its authorised service centre determine that your claim in respect of a product is invalid or you have provided false, inaccurate or misleading information with your claim, Sound United or its authorised service centre may charge you for any labour, parts or transport costs incurred.

### How to Claim

In order to make a claim under this warranty, take the following steps:

- 1 Attach your proof of purchase document(s) to the adjacent card and complete the details.
- 2 Contact Sound United by telephone or email (contact details below)
- 3 Deliver the product(s) the subject of your claim to the Authorised Service Centre nominated by Sound United. Details of the Authorised Services Centres are available at the below address
- 4 You must bear any expense you incur in claiming this warranty.

Notice: Our goods come with guarantees that cannot be excluded under the Australian Consumer Law. You are entitled to a replacement or refund for a major failure and compensation for any other reasonably foreseeable loss or damage. You are also entitled to have the goods repaired or replaced if the goods fail to be of acceptable quality and the failure does not amount to a major failure.

Brand	Category	Warranty Period
Bowers & Wilkins	Passive Loudspeakers	5 Years
	Active Loudspeakers (including subwoofer and Wireless Music Systems)	2 Years
	Headphones	2 Years
	Accessories	1 Year

### Sound United Sales and Marketing

Suite 303, 754 Pacific Highway, Chatswood,  
2067 New South Wales, Australia  
Tel: +61 (2) 9196 8990  
info-au.bw@soundunited.com



Make:

Bowers & Wilkins

Model No.:

Serial No.:

Date of Purchase:

Where Purchased:

## EU Declaration of Conformity

### English

Bowers & Wilkins hereby declares that this product is in compliance with the essential requirements and other relevant provisions of Directive 2014/53/EU, 2011/65/EU, and amendment Directive (EU) 2015/863. The complete Declaration of Conformity can be found at [www.bowerswilkins.com/compliance](http://www.bowerswilkins.com/compliance).

### Français

Bowers & Wilkins déclare, par la présente, que ce produit est conforme aux principales exigences et autres clauses pertinentes de la Directive 2014/53/UE, 2011/65/UE et de la modification de la Directive (UE) 2015/863. Vous trouverez le texte intégral de la Déclaration de conformité sur le site [www.bowerswilkins.com/compliance](http://www.bowerswilkins.com/compliance).

### Deutsch

Bowers & Wilkins erklärt hiermit, dass dieses Produkt den grundlegenden Anforderungen und anderen relevanten Bestimmungen der Richtlinie 2014/53/EU, 2011/65/EU und der Änderungsrichtlinie (EU) 2015/863 entspricht. Die vollständige Konformitätserklärung finden Sie unter [www.bowerswilkins.com/compliance](http://www.bowerswilkins.com/compliance).

### Español

Bowers & Wilkins declara por la presente que este producto cumple con los requisitos esenciales y otras disposiciones relevantes de la Directiva 2014/53/UE, 2011/65/UE y la enmienda de la Directiva (UE) 2015/863. Puede consultar la declaración de conformidad completa en [www.bowerswilkins.com/compliance](http://www.bowerswilkins.com/compliance).

### Português

A Bowers & Wilkins declara por este meio que este produto está em conformidade com os requisitos essenciais e outras disposições relevantes da Diretiva 2014/53/UE, 2011/65/UE e a Diretiva de emenda (UE) 2015/863. A Declaração de Conformidade completa encontra-se em [www.bowerswilkins.com/compliance](http://www.bowerswilkins.com/compliance).

### Italiano

Con la presente, Bowers & Wilkins dichiara che questo prodotto è conforme ai requisiti essenziali e ad altre disposizioni pertinenti della Direttiva 2014/53/UE, 2011/65/UE e della Direttiva di modifica (UE) 2015/863. La Dichiarazione di conformità completa è disponibile su [www.bowerswilkins.com/compliance](http://www.bowerswilkins.com/compliance).

### Nederlands

Bowers & Wilkins verklaart hierbij dat dit product voldoet aan de essentiële vereisten en andere relevante bepalingen van richtlijn 2014/53/EU, 2011/65/EU en gemeenschappelijke richtlijn (EU) 2015/863. De complete conformiteitsverklaring is te vinden op [www.bowerswilkins.com/compliance](http://www.bowerswilkins.com/compliance).

### Česky

Společnost Bowers & Wilkins tímto prohlašuje, že její produkt je v souladu se základními požadavky a dalšími příslušnými ustanoveními směrnice 2014/53/EU, 2011/65/EU a novelizující směrnice (EU) 2015/863. Plný text prohlášení o shodě naleznete na [www.bowerswilkins.com/compliance](http://www.bowerswilkins.com/compliance).

### Slovenčina

Spoločnosť Bowers & Wilkins týmto prehlasuje, že tento výrobok je v súlade so základnými požiadavkami a ďalšími príslušnými ustanoveniami smernice 2014/53/EÚ, 2011/65/EÚ a zmeny smernice (EÚ) 2015/863. Kompletné vyhlásenie o zhode nájdete na adrese [www.bowerswilkins.com/compliance](http://www.bowerswilkins.com/compliance).

### Magyar

A Bowers & Wilkins ezúton kijelenti, hogy a termék megfelel a 2014/53/EU, a 2011/65/EU irányelv és az (EU) 2015/863 módosító irányelv alapvető követelményeinek és egyéb vonatkozó rendelkezéseinek. A teljes megfelelésségi nyilatkozat a következő címen található: [www.bowerswilkins.com/compliance](http://www.bowerswilkins.com/compliance).

### Polski

Firma Bowers & Wilkins niniejszym oświadcza, że ten produkt jest zgodny z zasadniczymi wymaganiami i innymi stosownymi postanowieniami dyrektyw 2014/53/UE, 2011/65/UE oraz dyrektywy zmieniającej (UE) 2015/863. Pełną deklarację zgodności można znaleźć pod adresem [www.bowerswilkins.com/compliance](http://www.bowerswilkins.com/compliance).

### Ελληνικά

Με το παρόν η εταιρεία Bowers & Wilkins δηλώνει ότι αυτό το προϊόν συμμορφώνεται με τις ουσιαστικές απαιτήσεις και τις άλλες σχετικές διατάξεις των Οδηγιών 2014/53/ΕΕ, 2011/65/ΕΕ και της τροποποιητικής Οδηγίας (ΕΕ) 2015/863. Η πλήρης Δήλωση συμμόρφωσης είναι διαθέσιμη στη διαδικτυακή διεύθυνση [www.bowerswilkins.com/compliance](http://www.bowerswilkins.com/compliance).

### Русский

Настоящим компания Bowers & Wilkins заявляет, что этот продукт отвечает специальным требованиям и прочим соответствующим положениям Директивы 2014/53/EU, 2011/65/EU и ее поправки (EU) 2015/863. Полную Декларацию соответствия можно найти на сайте [www.bowerswilkins.com/compliance](http://www.bowerswilkins.com/compliance).

## UK Declaration of Conformity

### English

Bowers & Wilkins hereby declares that this product is in compliance with the essential requirements and other relevant provisions of Radio Equipment Regulations 2017 and The Restriction of the Use of Certain Hazardous Substances in Electrical and Electronic Equipment Regulations 2012. The complete Declaration of Conformity can be found at [www.bowerswilkins.com/en-gb/compliance](http://www.bowerswilkins.com/en-gb/compliance).

## Additional Countries

### USA

#### FEDERAL COMMUNICATIONS COMMISSION INTERFERENCE STATEMENT

This equipment has been tested and found to comply with the limits for a Class B digital device, pursuant to part 15 of the FCC Rules. These limits are designed to provide reasonable protection against harmful interference in a residential installation. This equipment generates, uses and can radiate radio frequency energy and, if not installed and used in accordance with the instructions, may cause harmful interference to radio communications. However, there is no guarantee that interference will not occur in a particular installation. If this equipment does cause harmful interference to radio or television reception, which can be determined by turning the equipment off and on, the user is encouraged to try to correct the interference by one or more of the following measures:

- Reorient or relocate the receiving antenna.
- Increase the separation between the equipment and receiver.
- Connect the equipment into an outlet on a circuit different from that to which the receiver is connected.
- Consult the dealer or an experienced radio/TV technician for help.

**FCC Caution:** Any changes or modifications not expressly approved by the party responsible for compliance could void the user's authority to operate this equipment.

**IMPORTANT NOTE:** FCC Radiation Exposure Statement: The product complies with the FCC portable RF exposure limit set forth for an uncontrolled environment and is safe for intended operation as described in this manual. The further RF exposure reduction can be achieved if the product can be kept as far as possible from the user body or set the device to lower output power if such function is available.

This transmitter must not be co-located or operating in conjunction with any other antenna or transmitter.

This device complies with Part 15 of the FCC Rules. Operation is subject to the following two conditions: (1) This device may not cause harmful interference, and (2) this device must accept any interference received, including interference that may cause undesired operation.

### Canada

#### Industry Canada Statement:

This device contains licence-exempt transmitter(s)/receiver(s) that comply with Innovation, Science and Economic Development Canada's licence-exempt RSS(s). Operation is subject to the following two conditions:

1. This device may not cause interference.
2. This device must accept any interference, including interference that may cause undesired operation of the device.

L'émetteur/récepteur exempt de licence contenu dans le présent appareil est conforme aux CNR d'Innovation, Sciences et Développement économique Canada applicables aux appareils radio exempts de licence. L'exploitation est autorisée aux deux conditions suivantes :

1. L'appareil ne doit pas produire de brouillage;
2. L'appareil doit accepter tout brouillage radioélectrique subi, même si le brouillage est susceptible d'en compromettre le fonctionnement.

CAN ICES-3 (B)/NMB-3(B)

#### Radiation Exposure Statement:

The product complies with the Canada portable RF exposure limit set forth for an uncontrolled environment and is safe for intended operation as described in this manual. The further RF exposure reduction can be achieved if the product can be kept as far as possible from the user body or set the device to lower output power if such function is available.

#### Déclaration d'exposition aux radiations:

Le produit est conforme aux limites d'exposition pour les appareils portables RF pour les États-Unis et le Canada établies pour un environnement non contrôlé. Le produit est sûr pour un fonctionnement tel que décrit dans ce manuel. La réduction aux expositions RF peut être augmentée si l'appareil peut être conservé aussi loin que possible du corps de l'utilisateur ou que le dispositif est réglé sur la puissance de sortie la plus faible si une telle fonction est disponible.

B&W Group Ltd  
Dale Road  
Worthing West Sussex  
BN11 2BH England

EU Importer:  
Bowers & Wilkins  
Beemdstraat 11  
5653 MA Eindhoven  
The Netherlands

Copyright © B&W Group Ltd, E&OE



Pour en savoir plus :  
[www.quefairedemesdechets.fr](http://www.quefairedemesdechets.fr)

