

KODAK LUMA 400

Portable HD Smart Projector

Quick Start Guide



INTRODUCTION

Thank you for purchasing the KODAK LUMA 400 Portable HD Smart Projector. This User Guide is intended to provide you with guidelines to ensure that operation of this product is safe and does not pose risk to the user. Any use that does not conform to the guidelines described in this User Guide may void the limited warranty.

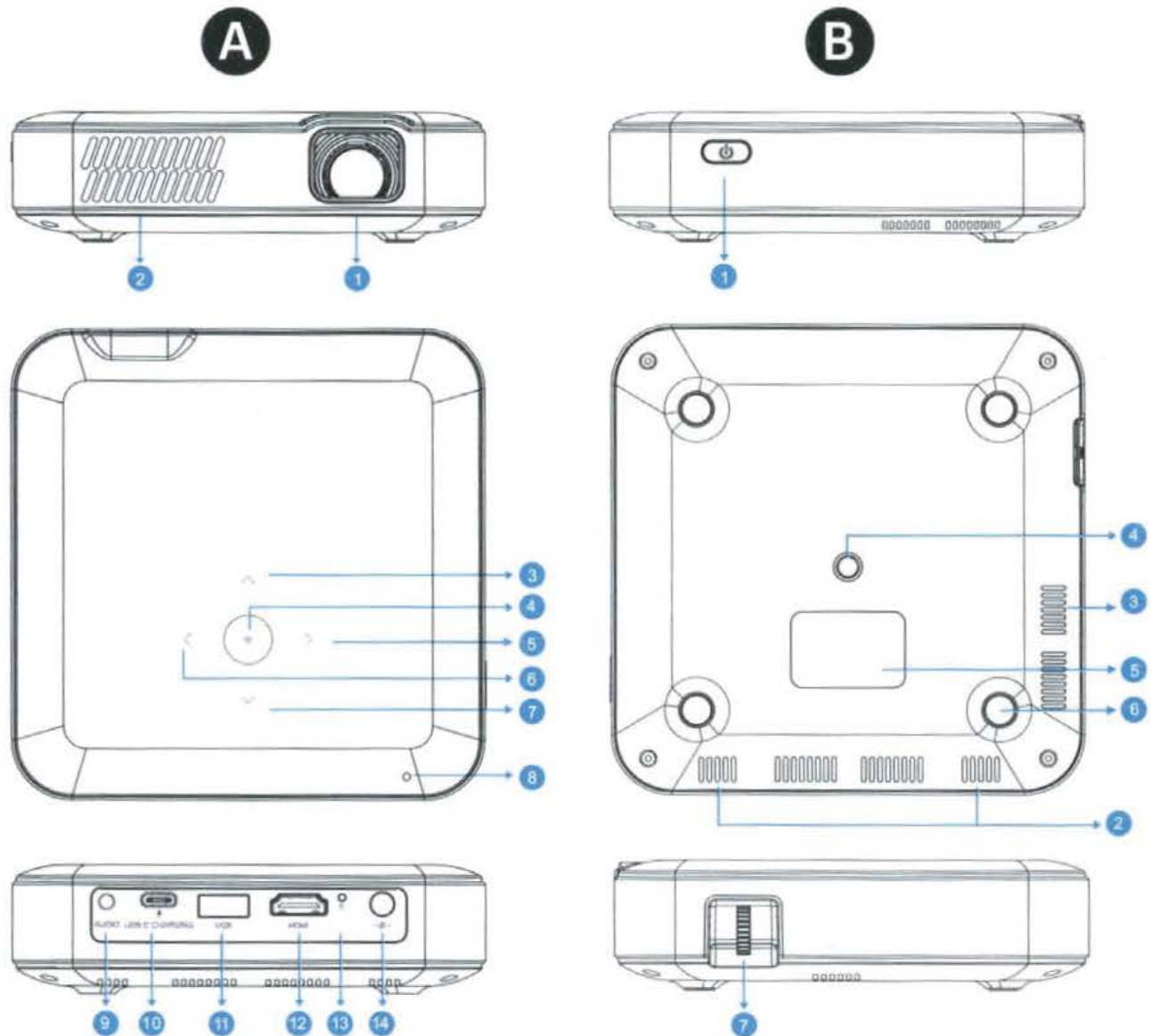
This product is covered by a limited one-year warranty. Coverage is subject to limits and exclusions. See warranty for details.

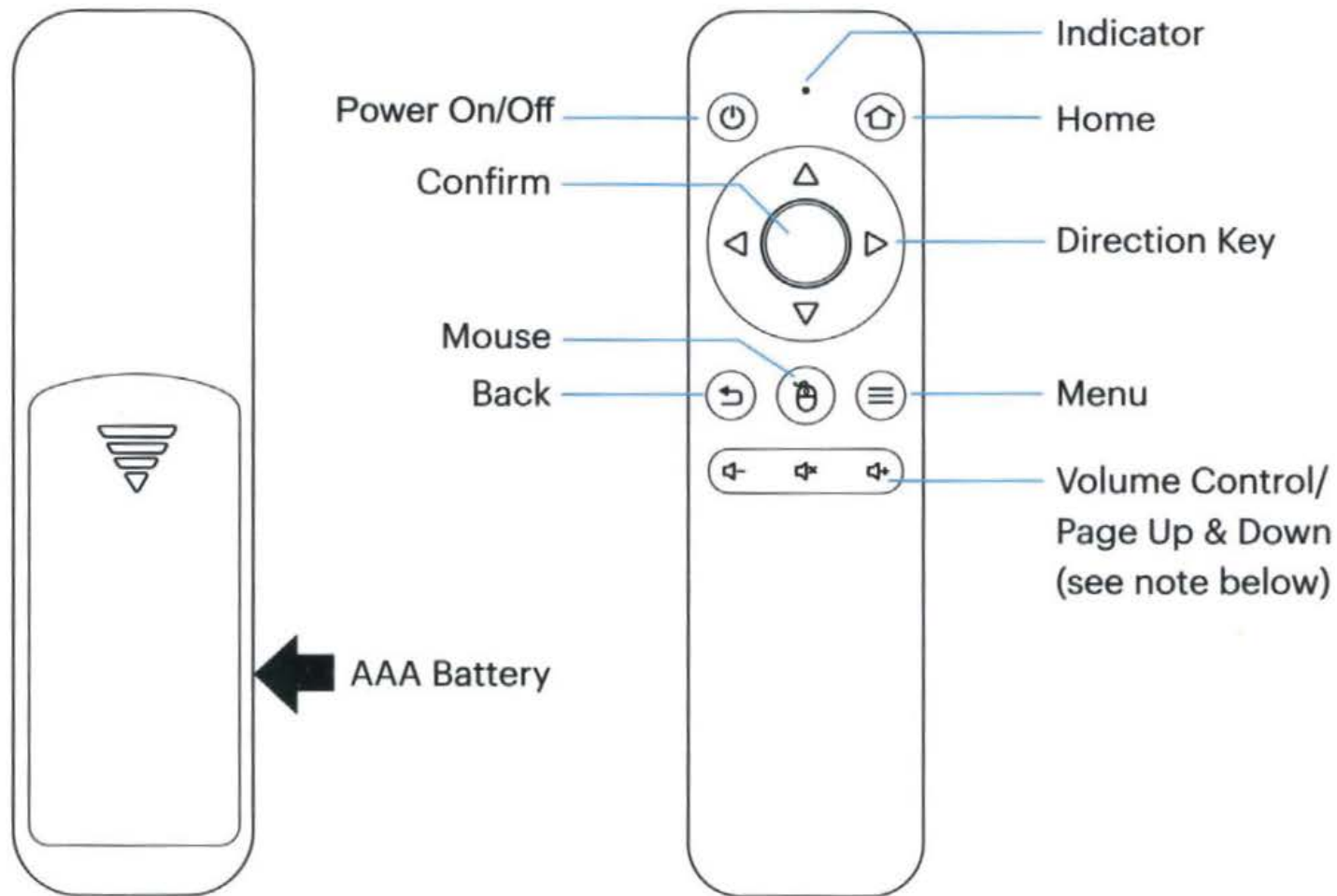
Please make sure to view and download the full user guide at <https://www.kodakphotoplus.com/pages/luma-400-projector-support>

PRODUCT OVERVIEW

- A**
1. Lens
 2. Air Outlet
 3. Up
 4. Confirm / Back
(press more than two (2) seconds)
 5. Right
 6. Left
 7. Down
 8. Power Indicator
 9. Audio Output (3.5 mm)
 10. USB-C Charging Input
 11. USB Input / Power Out
 12. HDMI Input
 13. Reset
 14. DC Input (15 V/2 A)

- B**
- | | |
|----------------|-----------------|
| 1. Power | 5. Rating Label |
| 2. Speaker | 6. Non-Slip Mat |
| 3. Air Inlet | 7. Focus Wheel |
| 4. Tripod Dock | |





1. Within two (2) minutes of turning on the projector, press and hold both the Vol + and Vol - keys for approximately three (3) seconds.
2. The indicator light in the remote will flash quickly during this time and then stop. When the flashing stops, this indicates that the remote has successfully paired with the projector.

NOTE: While the mouse button is activated, the Volume + or Volume - keys will function as page up and down.

USING YOUR PHONE

For greater ease of use and a more intuitive experience, you can control the projector with the KODAK LUMA App from the Apple App Store® or the Google Play™ store.

Once installed, you can use your phone as a remote to navigate through menus, mirror your screen, easily input login information for apps, and control media volume. Make sure to try out the reverse screen mirroring feature, which allows you to view the LUMA interface directly on your phone, and navigate that way!

1. Search for the KODAK LUMA in your phone's app store.
2. Download the app, and make sure that your phone is connected to the same Wi-Fi network as the projector.
3. Open the app and follow the instructions to pair it with the projector to enable remote functionality.

Scan this QR code to download the KODAK LUMA App and use your phone as a remote!



Apple App Store



Google Play

Scan this QR code to find out more about the KODAK LUMA App and all its great features.



CHARGING THE PROJECTOR

Before using the projector, connect it to the charger and allow it to fully charge. Always use the original charger that was provided to ensure proper charging. If the red indicator LED light is flashing, you see a red battery icon in the upper right corner of the screen, or you receive a Low Battery notification on-screen, this means that the battery is low. While the projector is charging, the indicator LED will be a solid red light. Once charging completes, the indicator LED will change to a solid white light.

To charge the projector, connect the charging cable to the USB-C charging port or connect the DC adapter to the DC port.

POWERING THE PROJECTOR ON/OFF

To turn the projector on or off, hold the power button on the side for three (3) seconds.



NOTE: The projector can be turned on or off with the remote control by pressing the POWER button when projector is connected to a power adapter.

ADJUSTING THE FOCUS

If the image on the screen appears fuzzy or unfocused when you turn the projector on, use the focus wheel on the side to correct the image. Turn the wheel up or down until the image appears sharp and clear.

NOTE: If a specific image or video remains fuzzy after adjusting the focus wheel, try pressing and holding the confirm button to return to the main menu. If the main menu graphics appear clear and the image is still fuzzy, the problem may be the image or video quality.

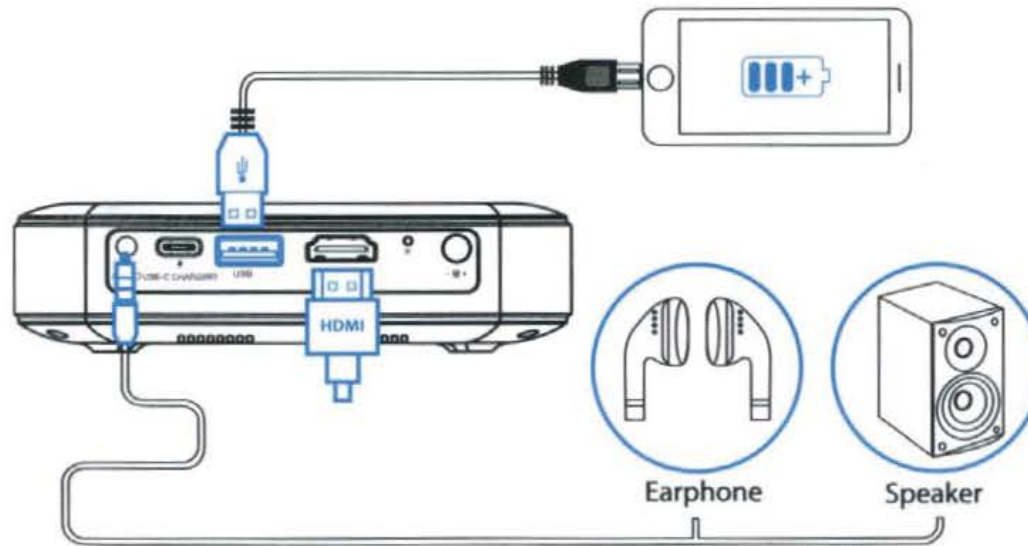
ADJUSTING VOLUME

To adjust the device volume during playback, use the + and - buttons on the remote control. There are also volume controls on the remote app for your phone.

CONNECTING TO AN EXTERNAL DEVICE

To access photos or videos stored on any USB drive, insert the drive into the corresponding port on the side, then navigate to Source > File Browser. If you're using an HDMI compatible device, connect an HDMI cable from the device to your projector to access and view images and pictures. An HDMI-to-HDMI cable is included. If your device requires an adapter, you will need to purchase it separately. For audio devices or headphones, there is an AUDIO OUT jack on the left side.

NOTE: If you connect an HDMI device as well as a USB drive, the HDMI device will take precedence over the USB drive and you will need to disconnect it to access the other connected sources.



CONNECTING TO A WIRELESS NETWORK

Connecting to the wireless network will allow you to use any of the pre-loaded apps featured on your projector's home screen, as well as download apps from the app store. This is a necessary step to allow you to take advantage of the Android operating system.

1. From the home screen, select Settings > Wi-Fi.
2. Select the correct network from the list and use the arrows on top of the projector or the remote to navigate the keyboard and enter the password.
3. The projector should connect to that network whenever it is in range.

CONNECTING A BLUETOOTH DEVICE

1. From the home screen, select Settings.
2. From the Settings menu, select Bluetooth.
3. Turn on the device you want to connect to your projector.
4. Select the device on the Bluetooth list to connect.
5. Wait a few minutes for your projector to connect to your device.

SCREEN MIRRORING (ANDROID/WINDOWS - MIRACAST®)

1. From the projector home screen, navigate to the Source page, select Screen Mirroring, and then select Miracast®. The name of the projector will be displayed on the screen so that you can accurately identify it when attempting to connect.
2. Make sure your device is connected to the same network as your projector.
3. Activate the screen mirroring software on your device.
 - a. To activate screen mirroring on your Android™ device:
 - i. On Samsung devices, swipe down from the top notification bar to the expanded view, and then swipe left (if necessary) and touch the SmartView icon to activate screen sharing.

NOTE: Check your device settings for the screen casting/screen mirroring options. The name of the function may vary by device model and service carrier. Other names used may include Cast or Screen Mirroring, as well as Smart View. All devices must be running at least Android version 4.1.2.

- b. To activate screen mirroring on your Windows® 10 device:
 - i. From the start menu, select Settings.
 - ii. In the Settings menu, select Devices.
 - iii. On the left side of the Devices menu, select Connected Devices, and then click Add a Device.

4. Select the projector from the list of devices and select Connect.

A dialog box will pop up on the projector screen for you to confirm the connection; use the arrows or the remote to highlight Accept and press the confirm button.

5. Your screen will now be mirrored to the projector.

6. When finished, select Disconnect on your device.

SCREEN MIRRORING (iOS)

1. From the projector home screen, select Source > Screen Mirroring, and then select AirPlay. The name of the projector will be displayed on the screen so that you can accurately identify it when attempting to connect.
2. Make sure your device is connected to the same network as your projector.
3. Activate the screen mirroring software on your device.
 - a. To activate screen mirroring on your iOS device:
 - i. Swipe down to reveal the Control Center and tap the Screen Mirroring button.
4. Select the projector from the list of devices and select Connect. A dialog box will pop up on the projector screen for you to confirm the connection; use the arrows or the remote to highlight "Accept" and press the confirm button.
5. Your screen will now be mirrored to the projector.
6. When finished, select Disconnect on your device.

CUSTOMER SERVICE CONTACT INFORMATION

Should you experience any problems with your product, please contact us before returning the item to the place of purchase. We're here to help!

U.S. Support: kodak@camarketing.com | 844-516-1539

International Support: kodakintl@camarketing.com | 844-516-1540

KONTAKTINFORMATIONEN FÜR DEN KUNDENDIENST

Sollten Sie Probleme mit Ihrem Produkt haben, setzen Sie sich bitte mit uns in Verbindung, bevor Sie den Artikel an den Ort Ihres Kaufs zurückbringen. Wir sind hier, um zu helfen!

Support in den USA: kodak@camarketing.com

844-516-1539

Internationaler Support: kodakintl@camarketing.com

844-516-1540

www.kodakphotoplus.com

The Kodak trademark, logo, and trade dress are used under license from Eastman Kodak Company.

Android is a trademark of Google, LLC.

Bluetooth is a trademark of Bluetooth SIG, Inc. USA.

DLP® and the DLP logo are registered trademarks of Texas Instruments.

HDMI, the HDMI logo, and High-Definition Multimedia Interface are trademarks or registered trademarks of HDMI Licensing, LLC in the United States and/or other countries.

Lightning, Mac, and AirPlay are trademarks of Apple Inc. in the U.S. and other countries.

iOS is a trademark of Cisco in the U.S. and other countries and is used under license.

Wi-Fi and Miracast are trademarks of Wi-Fi Alliance in the U.S. and/or other countries.

Windows is a trademark of Microsoft Corporation and other countries.

All other products, brand names, company names, and logos are trademarks of their respective owners, used merely to identify their respective products, and are not meant to connote any sponsorship, endorsement, or approval.

Distributed by: C&A Marketing, Inc., 114 Tived Lane East, Edison, NJ 08837, USA

© 2021 C&A IP Holdings, LLC. All Rights Reserved. Made in China.

La marque commerciale Kodak, le logo et l'habillage sont utilisés sous licence de Eastman Kodak Company.

Android est une marque commerciale de Google Inc.

iOS est une marque commerciale d'Apple Inc., enregistrée aux États-Unis et d'autres pays.

Mac est une marque commerciale d'Apple Inc., enregistrée aux États-Unis et d'autres pays.

Miracast est une marque commerciale de Wi-Fi Alliance, enregistrée aux États-Unis et d'autres pays.

Windows est une marque commerciale de Microsoft Inc., enregistrée aux États-Unis et d'autres pays.

Tous les autres produits, noms de produits, noms de sociétés ainsi que les logos sont des marques de commerce ou des marques déposées de leur détenteur respectif, et ne signifient aucun parrainage, autorisation ou approbation.

Distribué par : C&A Marketing, Inc., 114 Tived Lane East, Edison, NJ 08837, USA

© 2021. Tous droits réservés. Fabriqué en Chine.

Il marchio, il logo e l'immagine commerciale di Kodak sono utilizzati secondo licenza fornita da Eastman Kodak Company.

Android è un marchio commerciale di Google Inc.

IOS è un marchio commerciale di Cisco registrato negli Stati Uniti e altri paesi e utilizzato secondo licenza.

Apple è un marchio commerciale di Apple Inc., registrato negli USA e in altri paesi.

Miracast è un marchio commerciale di Wi-Fi Alliance registrato negli USA e in altri paesi.

Windows è un marchio commerciale di Microsoft Corporation registrato negli USA e in altri paesi.

Eventuali ulteriori prodotti, servizi, nomi e logo utilizzati sono marchi di fabbrica, di proprietà dei rispettivi produttori, utilizzati per identificare i prodotti e non per connotare finanziamenti, approvazioni o altri legami.

Distribuito da: C&A Marketing, Inc., 114 Tived Lane East, Edison, NJ 08837, USA

©2021. Tutti i diritti riservati. Prodotto in China.

La marca registrada Kodak, el logotipo y la presentación del producto se usan bajo licencia de Eastman Kodak Company.

Android es marca registrada de Google Inc.

IOS es marca registrada de Cisco en los Estados Unidos y otros países y se utiliza bajo licencia.

Mac es marca registrada de Apple Inc. en EE. UU. y en otros países.

Miracast es marca registrada de Wi-Fi Alliance en EE. UU. o en otros países.

Windows es marca registrada de Microsoft Corporation en EE. UU. o en otros países.

Todos los otros productos, nombres de marcas, nombres de compañías y logotipos son marca registrada de sus respectivos propietarios, se utilizan solo para identificar sus correspondientes productos y no pretenden connotar patrocinio, aprobación o autorización.

Distribuido por: C&A Marketing, Inc., 114 Tived Lane East, Edison, NJ 08837, USA

©2021. Todos los derechos reservados. Fabricado en China.

Die Kodak-Marke, das entsprechende Logo und die Aufmachung werden unter Lizenz von Eastman Kodak Company verwendet.

Android ist eine Marke von Google Inc.

IOS ist eine in den USA und anderen Ländern eingetragene Marke von Cisco und wird unter Lizenz verwendet.

Mac ist eine in den USA und anderen Ländern eingetragene Marke von Apple Inc.

Miracast ist eine in den USA und/oder anderen Ländern eingetragene Marke der Wi-Fi Alliance.

Windows ist eine in den USA und/oder anderen Ländern eingetragene Marke der Microsoft Corporation.

Alle anderen Produkte, Markennamen, Firmennamen und Logos sind Markenzeichen ihrer jeweiligen Eigentümer und dienen lediglich zur Kennzeichnung ihrer jeweiligen Produkte. Sie sind nicht als Sponsoring, Billigung oder Zustimmung gedacht.

Vertrieben durch: C&A Marketing, Inc., 114 Tived Lane East, Edison, NJ 08837, USA

©2021. Alle Rechte vorbehalten. Hergestellt in China.

