



V380 Pro Smart camera--Product Manual (Suitable for 4G camera)

①Download

Search for "V380 Pro" in the APP Store or scan the QR code below to download and install the V380 Pro APP



Scan the QR code to download the V380 Pro APP

Electronic manual

Use the V380 Pro APP to scan the QR code on the camera to add the device and follow the instructions to view the electronic manual of the device.

②Reset the camera

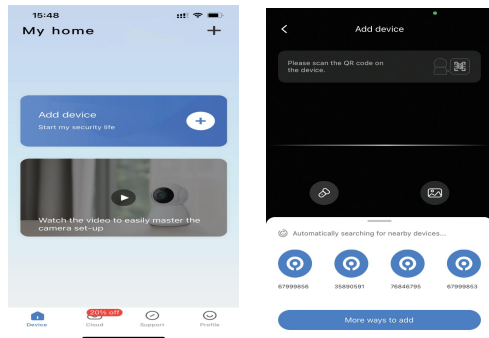
1. Power on the camera. (For 4G camera, please ensure the SIM card has been inserted into the camera before power on.)
2. Press and hold the reset button for several seconds, the camera will prompt "Reset completed".



Note: The position of the reset button and SIM card slot is for reference only, depending on your device.

③Preparations before network distribution

1. Open the APP, click on the account registration, enter the mobile phone number or email address, obtain the verification code, set the account password and complete the registration;
2. Click "+" in the upper right corner, click "+ Add device", and scan the QR code on the body of the machine with your mobile phone;

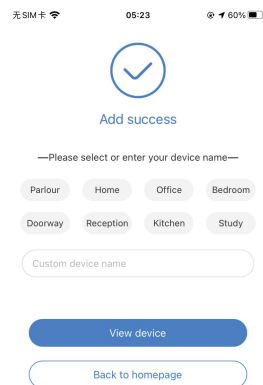


Note: Each APP version may be different, please follow the prompts in the latest version of APP to set up the camera.

2. If the QR code cannot be recognized, or the QR code is damaged, click "More ways to add".
3. Tap 4G Internet/Direct Cable Connection, enter the device ID on the label, and add the device as prompted.

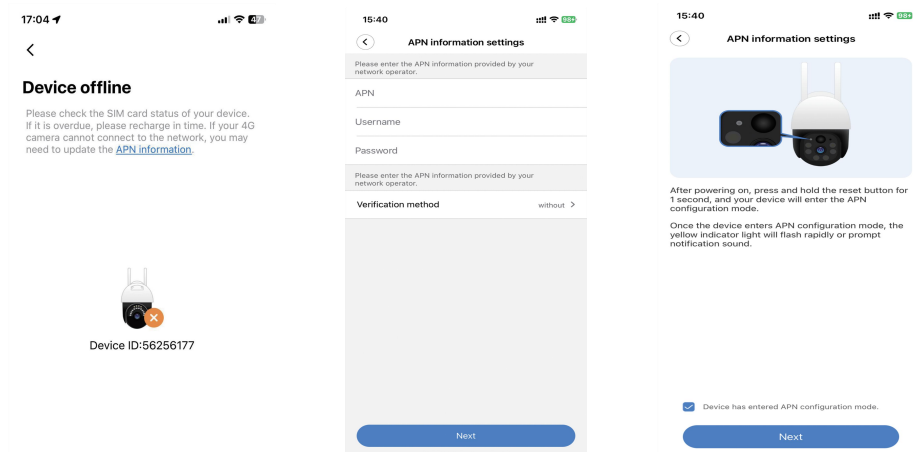
④Add complete

After the addition is complete, you can create groups for cameras and set camera names.



APN settings

1. Click "APN information settings" to set APN parameters.
2. After the setting is complete, click "Next".
3. Short press the reset button on the device for one second. The device's yellow indicator light will flash or the device will prompt a sound of "Beep", which means it has entered the APN setting mode.



If the 4G camera is offline, please try to set APN.

Please contact your SIM card operator for APN information.

4. The APP will generate the QR code and then use the device to scan this QR code.

5. After the device identifies the QR code successfully, it will prompt a notification sound.



Solar-powered camera indicator light

4G camera

1. Indicator is off: device is powered off or standby mode ;
2. Indicator is red: device is powered on and wakes up, but the network is unavailable;
3. Indicator is yellow: device is connected to the network;
4. Indicator red light flashes continuously: device can't detect the SIM card, please check whether the card is inserted;
5. Indicator red light flashes twice continuously: SIM card can be detected, but device can't connect to the Internet. Please check whether mobile data plan is available.

Micro SD card recording

When installing the SD card, turn off the camera first, and then turn on the power after the installation is complete.

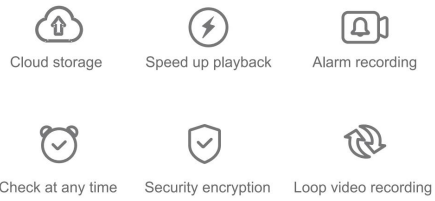
Attentions

1. Concerning Micro SD card recording, when the recording capacity reaches the upper limit, the earliest recording file of the recording event will be automatically overwritten.
2. Long-term use in the unconventional environment (high temperature, high humidity, the large amount of dust or smoke, etc.) may damage the camera.
3. V380 Pro APP and device firmware will be updated from time to time. For your best experience, please update the APP and upgrade the device firmware in time.

Cloud service

You can enjoy these special functions after subscribing the cloud service on the[Cloud] interface of the V380 Pro APP.

Cloud service special functions



Cloud service is a value-added service that requires payment.