

Smart Diffuser Lamp™

- it is not just any other diffuser lamp -

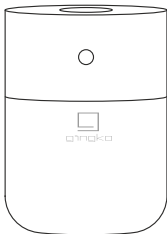


Quick User Manual



Smart Diffuser LampTM

- it is not just any other diffuser lamp -



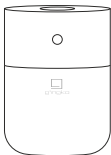
Thank you for purchasing the Gingko Smart Diffuser Lamp. Please read the instruction manual carefully to achieve the best performance of this product.

If you have any further queries, please feel free to get in touch with us at **support@gingkodesign.co.uk**

Please Keep this Instruction Manual safe for future reference



Packing List



the Smart Diffuser Lamp



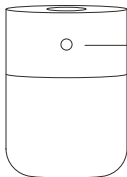
Micro USB Charging Cable



Instruction Manual

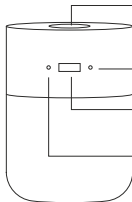


Product Description



Touch Control Button

- ① A quick touch on this button to turn on and adjust the Brightness (3 light intensities)
- ② Touch the control button for 3 seconds to turn on or turn off the Diffuser



Copper Oil Diffuser Plate

- ③ DO NOT touch when it's in use



Diffuser LED Indication Light

- ④ turns blue when the diffuser is turned on



USB Charging Port



LED Charging Indication Light

- ⑤ turns red when the product is charging and turns green when fully charged



Product Charging Instruction

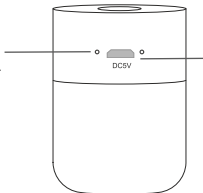
The product usually arrives 70% charge ,however, please fully charge before using for the first time by following the below instruction:

1. Take the micro USB charging cable out from box underneath product.
2. Connect the USB charging cable to any USB plug adapter with a **5V output** i.e. a smartphone charger or a USB port on the computer.
3. Carefully connect it to the charging port on the product.

ATTENTION: IMPORTANT

Please make sure the micro USB is facing the right direction before connecting it to the product. Do not force the micro-USB into the charging port if placed in the wrong direction as it may damage the fragile charging port.

The indication light will be red when being charged. After fully charged, this light will turn off.



The top side of the Micro-USB is generally smaller than the bottom side. Please make sure it's facing the right way when connecting to charging port of the product.



How to Use the Diffuser

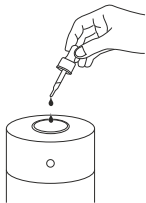
The steps below will show you how to use the unique Diffuser of this lamp



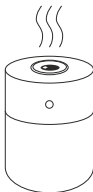
- ② Touch the button for 3 seconds to turn on the diffuser, it will then gently and silently heat up to between 38 -42 °C



- ① Peel off the protective film on top of the copper plate



- ③ Drop your essential oil into the copper plate.



④

The plate will stay on at 38 -42 °C and slowly diffuse the oil; when the essential oil has been used up, a small oil residue will remain. Please use a damp cloth to wipe clean before using again.



How to Use the Light

The Smart Diffuser Lamp has 3 different light intensities and it works independently to the diffuser. Therefore, it can be used either as an ambient light or just a diffuser.



A quick touch of the sensor button will turn on the light. Touch it again and it will change to 2nd and 3rd brightness intensity. To turn it off, simply touch it again when it's on the brightest level (the 3rd intensity)



What is the Smart Diffuser Lamp Made of?

We care for the environment as much as you and providing something which is sustainably designed and made is also our key product philosophy to our business.

The Smart Diffuser Lamp is made of natural and sustainably sourced walnut or white ash wood with recyclable frosted acrylic glass. Some wood and acrylic glass we used on this product might be also from recycled source.



**DURABLE
NON-FRAGILE**
Frosted Acrylic glass



Unbreakable



Shatter Proof



DESIGN



TECHNOLOGY



Warranty & Product Care

Warranty

This product is covered under one year manufacturer warranty starting from the date of purchase. Within the warranty period, any repair service or components replacement will be provided for free.

Warranty does not apply to the following circumstances:

1. Product failure due to improper use, misuse, drops, abuse, alteration, faulty installation, power line surge or modification
2. Product failure due to acts of nature such as natural disaster, fire, flood, or casualty.
3. Any damaged made to the charging port by user error is not covered by the manufacturer warranty.

Product Care

1. The product is made of natural wood, any natural wood grain on the wood is not a product fault.
2. Any drop of this product could cause damage to the device.
3. You can use tissue or a damp cloth to clean the copper diffuser plate when it's not in use.
4. Please take extra care when charging this product with the micro-USB charging port.



Discover more elegant and unique Gingko designs at

www.gingkodesign.co.uk

Copyright © Gingko Design Ltd

All rights registered

Product designed in Warwick, UK by Gingko Design Ltd

