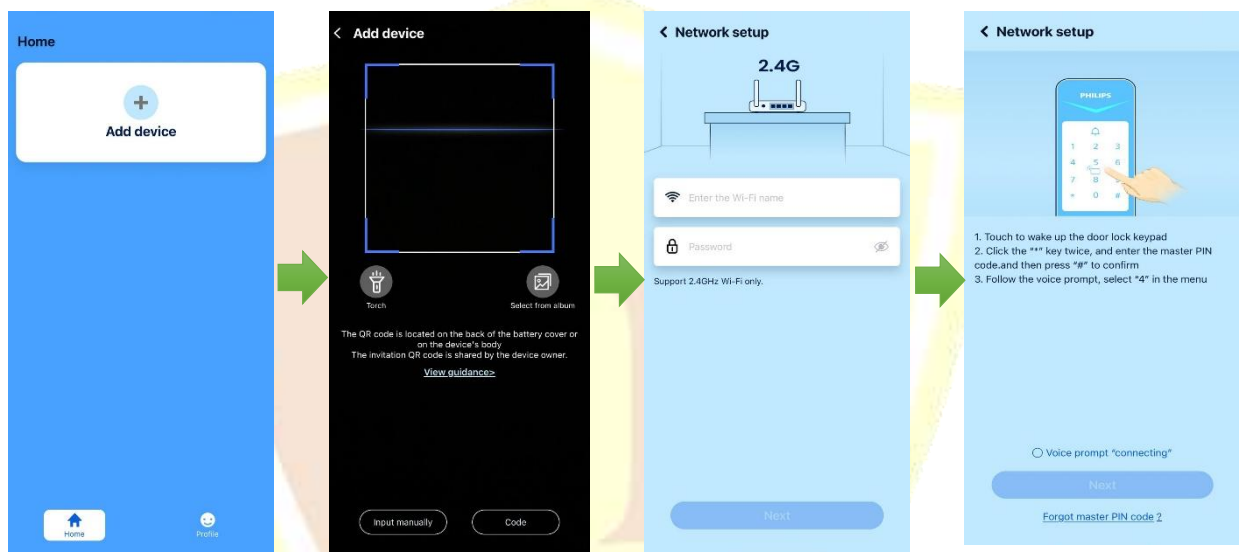


Philips Smart Lock DDL720-FVP APP Connection

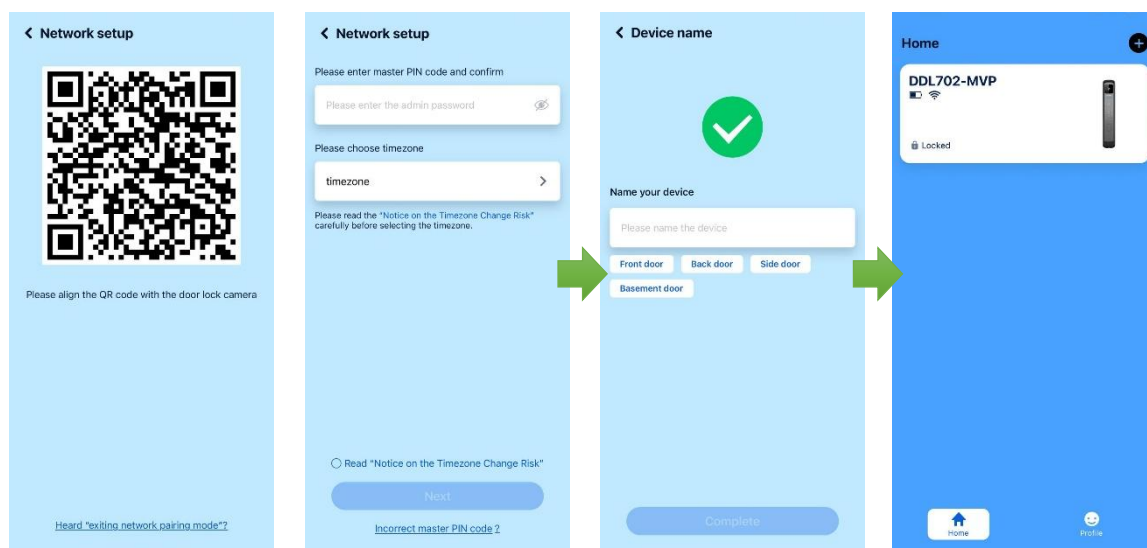


1 Register and log in to the Philips Home Access app.

2 Connect to APP

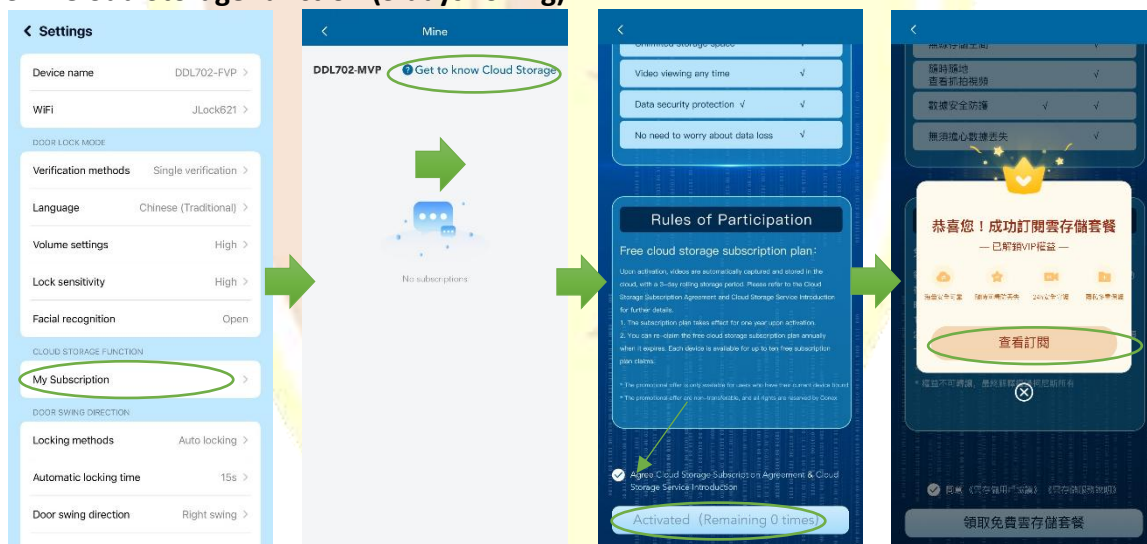


- 2.1 Enable Wi-Fi on your phone and tap the "Add Device" button on the app.
- 2.2 Scan the 'App Binding' QR code on the back of the device's screen.
- 2.3 Click "Next Step" after selecting the correct router wireless network *
- 2.4 Touch to wake up the door lock keypad
- 2.5 Click the "*" key twice, and enter the master PIN code and then press "#" to confirm.
- 2.6 Follow the voice prompt, select "4" in the menu



- 2.7 Align the QR code with the door lock camera.
- 2.8 Enter the master PIN code and choose time zone.
- 2.9 Set your smart lock name.

3 Cloud Storage function (3 days rolling)



- 3.1 In the APP Setting to Cloud Storage function Click" My Subscription"
- 3.2 Click "Get to know cloud storage"
- 3.3 Click "Active free cloud storage"

- The first account to connect to the door lock is the app administrator. Other accounts cannot directly connect to the door lock and must be authorized by the app administrator.
- The network connection must be 2.4 GHz. Please ensure your router provides this.
- Cloud storage offers a free 3-day trial. The subscription term is 10 years, requiring annual renewal.

If you need technical support, please contact our Customer Service Officer during office hours.