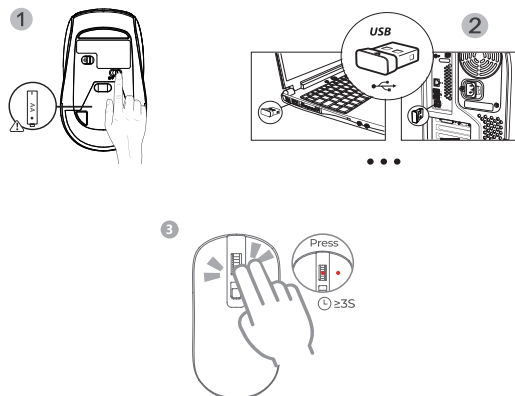


Q: How to solve it if the mouse doesn't work?



1. **Make sure** the mouse switch is "ON".
2. **Take out** the battery and install it back with the **correct polarity direction**.
3. **Unplug** the USB receiver and **replug it back**.
4. Turn on the mouse switch, press the scroll wheel and right button **simultaneously over 3s** and it will enter code pairing mode. **Move the mouse within 20s** and it works normally indicating successful code pairing.

Q: How to solve these if mouse and keyboard have lag issues or any other malfunctioning problems?

1. The battery of the product is running low, please **change the battery**.
2. You computer gets stuck, please **reboot the computer** and try it again.
3. Please keep the distance between the product and the USB receiver **within 10m** as it's their maximum working distance, and do not put any metal obstacle between them.

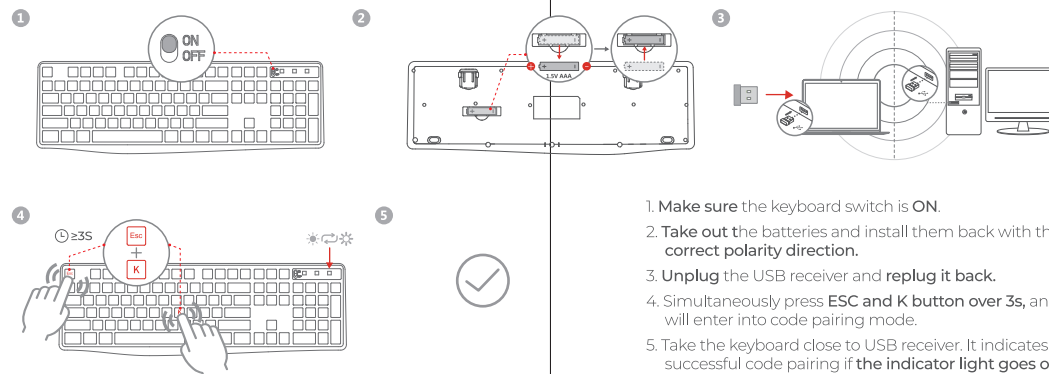
If your problems still can't get solved via above solutions, please contact our customer service for help.
(After-sales service Email: earlylitcsm001@126.com)

FAQ Card



(After-sales service Email: earlylitcsm001@126.com)

Q: How to solve it if the keyboard doesn't work?



1. **Make sure** the keyboard switch is **ON**.
2. **Take out** the batteries and install them back with the **correct polarity direction**.
3. **Unplug** the USB receiver and **replug it back**.
4. Simultaneously press **ESC and K button over 3s**, and it will enter into code pairing mode.
5. Take the keyboard close to USB receiver. It indicates the successful code pairing if **the indicator light goes out**, and you can use the product after that.