



**juice pack air &  
juice pack wireless**

Made for iPhone 7 & iPhone 7 Plus

---

**USER MANUAL**

## Welcome

Thank you for purchasing the mophie **juice pack** wireless or **juice pack** air battery case with **charge force** wireless power, made for the Apple iPhone 7 or iPhone 7 Plus. Your **juice pack** case gives your phone everyday protection and enough power to go all day without your needing to find a power outlet. With **charge force** wireless power, recharging your **juice pack** case and phone couldn't be any easier — simply place the **juice pack** case against any mophie **charge force** accessory or virtually any other wireless charging technology.

## Package Contains

- mophie **juice pack** wireless or **juice pack** air battery case made for Apple iPhone 7 or iPhone 7 Plus
- mophie wireless **charging base** (included in **juice pack** wireless)
- Micro-USB Cable
- Quick-start guide

## Features

Your mophie **juice pack** battery case's lithium-polymer battery delivers hours of extra battery whenever you need it, all while providing a comfortable ergonomic design and the complete protection of a hard-shell case.

**Here are just some of the reasons why your *juice pack* case is so great:**

- Wireless charging — you can simply place the **juice pack** case on just about any wireless charging base to immediately begin recharging the phone and case.
- The **juice pack** case is compatible with mophie **charge force** accessories for your home, desk and car, and with any Qi-compatible wireless charger. (Click [here](#) to see mophie **charge force** products.)
- (Take a breath) Ergonomic, form-fitting, fully protective impact-resistant case-and-battery-in-one made for iPhone 7 or iPhone 7 Plus.
- High-impact protection featuring internal rubberized support pads — built to withstand drops and hard falls.
- A 2-second press of the status button allows you to charge your phone whenever it needs it. However, even in standby mode your phone still has full-case protection.
- Priority+ wireless charging provides power to your phone first before the **juice pack** case starts to recharge.
- Track battery power at a glance with the integrated four-light LED status indicator. You can keep tabs on charging status and current battery life. Know before you go!

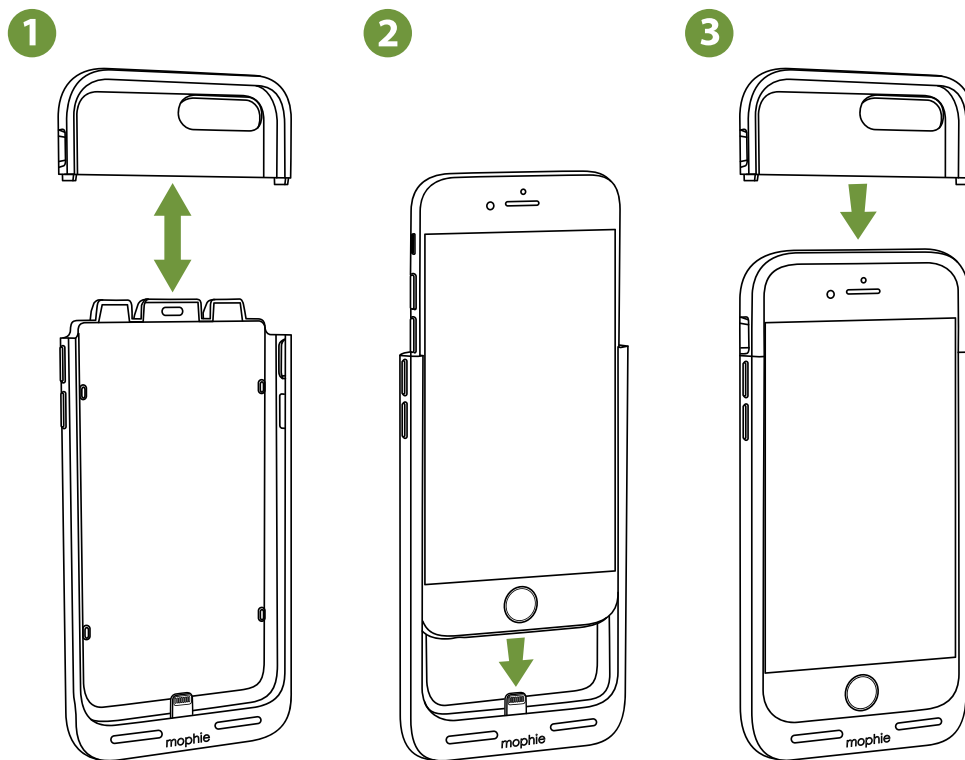
- Rechargeable for over 500 full cycles. Our case is built to last, letting you do more, longer.
- Built in short-circuit, over-charge, and temperature protection, so you can charge with confidence. Safety first!

## **Compatibility**

- The mophie **juice pack** wireless and **juice pack** air battery cases made for iPhone 7 are designed and intended solely for the Apple iPhone 7 smartphone. Please do not attempt to use them with any other device.
- The mophie **juice pack** wireless and **juice pack** air battery cases made for iPhone 7 Plus are designed and intended solely for the Apple iPhone 7 Plus smartphone. Please do not attempt to use them with any other device.
- The mophie **juice pack** wireless and **juice pack** air battery cases made for iPhone 7 or iPhone 7 Plus will charge wirelessly from mophie **charge force** accessories or any Qi-compatible wireless charger, and are also compatible with other wireless charging technologies, such as those used at coffee houses, on airline flights, in furniture products with wireless charging, and in consumer vehicles that support wireless charging.
- The mophie wireless **charging base** will wirelessly charge any Qi-compatible wireless device.

## Installing your *juice pack* case

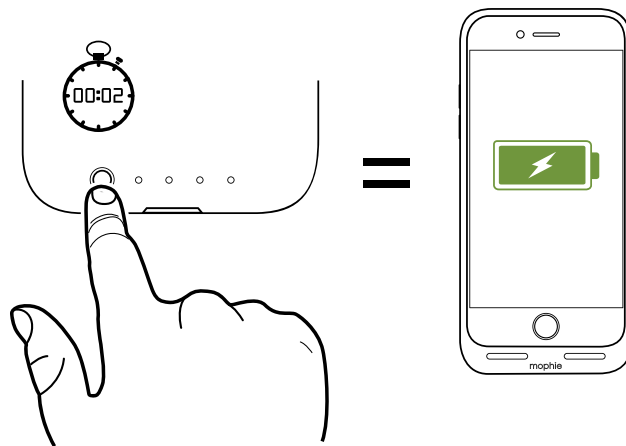
1. Separate the **juice pack** case sections.
2. Slide your iPhone all the way into the bottom section of the **juice pack** case so that the case's connector is fully inserted into the phone.
3. Slide the top section of the **juice pack** case all the way over the exposed top of the phone so that it snaps into the bottom section of the case.



## Charging your phone using your *juice pack* case

IMPORTANT: Before using your **juice pack** case for the first time, fully charge it (so that pressing the charge status button lights all 4 LEDs).

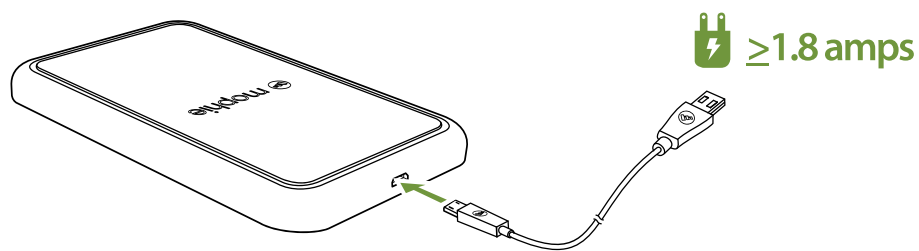
To begin charging your phone, press the status button for two seconds.



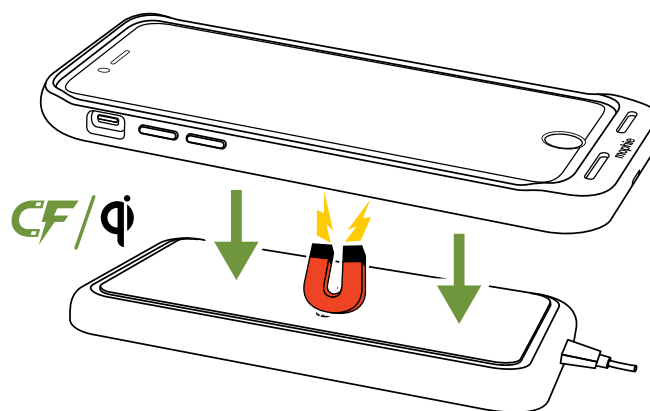
## (Wireless) Charging your *juice pack* case

Your **juice pack** case will charge wirelessly from mophie **charge force** accessories and all Qi-compatible wireless chargers, and can be wirelessly charged by most brands of wireless charging bases. It is also compatible with other wireless charging technologies, such as those used at coffee houses, on airline flights, in furniture products with wireless charging, and in consumer vehicles that support wireless charging.

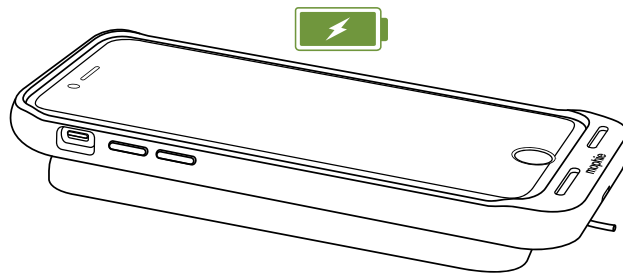
1. Connect the wireless charging base according to its manufacturer's instructions.
  - For the mophie wireless **charging base** included with the **juice pack** wireless case, connect the charging base to a wall charging adapter with at least a 1.8-amp output.



2. Place the **juice pack** case against the wireless charging base or on the mophie **charge force** accessory to begin charging.

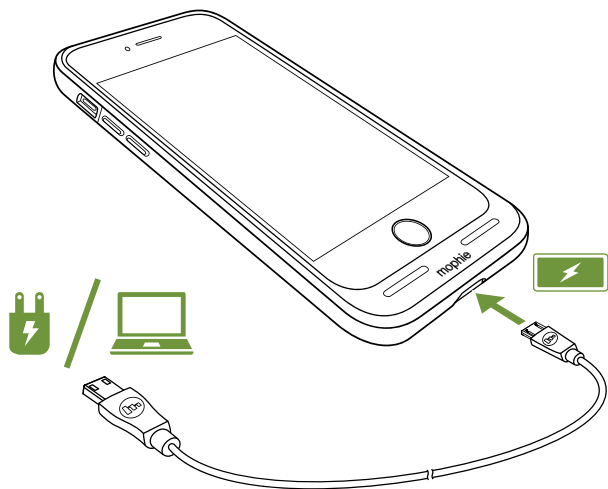


3. Make sure that the **juice pack** case is centered on the charging base. (When charging from a mophie **charge force** accessory the **juice pack** case will automatically align itself for a proper charge.)



### **(Wired) Charging your *juice pack* case**

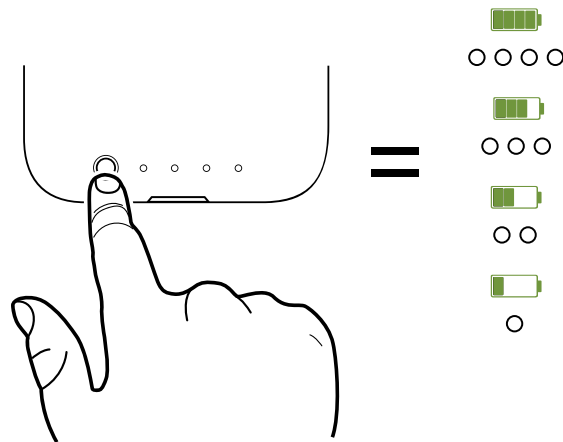
Use the supplied cable connect your **juice pack** case to the adapter included with your iPhone or another USB wall adapter, or to a computer's USB port.





## Checking your *juice pack* case's charging status

Momentarily press the status button on your **juice pack** case and the status LEDs will indicate its charge level. Four LEDs means that the case is fully charged, while one LED means that it's almost empty. Know before you go!



## Taking care of your *juice pack* battery case

- Keep your **juice pack** case dry and away from moisture and corrosive materials.
- Do not clean your **juice pack** case with harsh chemicals, soaps or detergents. Just wipe it with a soft, water-dampened cloth.
- Make sure the case's USB ports do not become contaminated with lint or other debris. Use a canned-air type of product periodically to ensure that the port openings are clear.
- Recharge your **juice pack** case once every three months when not in use. If you plan on putting it away, charge it for one hour first.

## **Warranty**

At mophie, we are dedicated to making the best quality products we can. To back this up, this product is warranted for 2 years from date of purchase. This warranty does not affect any statutory rights that you may be entitled to. Keep a copy of your purchase receipt as proof of purchase. Be sure to register your product at [mophie.com](http://mophie.com). Failure to register your product and/or provide proof of purchase may void the warranty.

## **Exclusions & Limitations**

Except for the limited warranty expressly set forth or to the extent restricted or prohibited by applicable law, mophie expressly disclaims any and all other warranties express or implied, including any warranty of quality, merchantability, or fitness for a particular purpose, and you specifically agree that mophie shall not be liable for any special, incidental, indirect, punitive, or consequential damages for breach of any warranty of any type on any mophie product. In addition to and without limiting the generality of the foregoing disclaimers, the limited warranty does not, under any circumstances, cover the replacement or cost of any electronic device or personal property inside or outside of the mophie product.

## Customer Service

Telephone: 1-888-8mophie

International: +1 (269) 743-1340

Web: [www.mophie.com/cs](http://www.mophie.com/cs)

## Warning

Read all instructions and warnings prior to using this product. Improper use of this product may result in product damage, excess heat, toxic fumes, fire or explosion, for which damages you ("Purchaser"), and not mophie llc ("Manufacturer") are responsible.

**WARNING!** This product contains magnets. To reduce the risk of interference with other electrical equipment, consult your doctor and/or device manufacturer before using this product if you have a pacemaker or other implanted electrical device.

- ☠ Before using your **juice pack** case for the first time, fully charge it (so that pressing the charge status button lights all 4 LEDs).
- ☠ Do not store device in high-temperature environment, including heat caused by intense sunlight or other forms of heat. Do not place device in fire or other excessively hot environments.
- ☠ Be cautious of excessive drops, bumps, abrasions, or other impacts to this device. If there is any damage to the device such as dents,

punctures, tears, deformities, or corrosion due to any cause, discontinue use. Contact Manufacturer or dispose of it in an appropriate manner at your local battery-recycling center.

- ☠ Do not disassemble this device or attempt to re-purpose or modify it in any manner.
- ☠ For questions or instructions for the various ways to charge the device refer to the *Charging your **juice pack** case* sections of this manual.
- ☠ Do not attempt to replace any part of this device.
- ☠ If this device is intended by Purchaser to be used by a minor, purchasing adult agrees to provide detailed instructions and warnings to any minor prior to use. Failure to do so is sole responsibility of Purchaser, who agrees to indemnify Manufacturer for any unintended use/misuse by a minor.
- ☠ All products have gone through a thorough quality assurance inspection. If you find that your device is excessively hot, is emitting odor, is deformed, abraded, cut or is experiencing or demonstrating an abnormal phenomenon, immediately stop all product use and contact Manufacturer.
- ☠ Before storing your battery for an extended period of time, charge it for one hour.
- ☠ Never dispose of batteries in the garbage. Disposal of batteries in the garbage is unlawful

under state and federal environmental laws and regulations. Always take used batteries to your local battery-recycling center.

## **Legal**

This product is meant for use only in conjunction with the appropriate device. Please consult your device packaging to determine whether this product is compatible with your particular device. Manufacturer is not responsible for any damages to any device incurred through the use of this product. Manufacturer shall not in any way be liable to you or to any third party for any damages you or any third party may suffer as a result of use, intended or unintended, or misuse of this product in conjunction with any device or accessory other than the appropriate device for which this product is designed. Manufacturer will not be responsible for any damages you or any third party may suffer as a result of misuse of this product as outlined above. If you are responsible for product use with an unintended device and damages result from such use, you agree to indemnify Manufacturer for any resulting injuries to any third part(ies).

mophie, juice pack, charge force, Priority+, Stay Powerful, mophie loves you, the five-circles design, and the mophie logo are trademarks of mophie inc. Apple and iPhone are trademarks of Apple

Inc., registered in the U.S. and other countries. The trademark “iPhone” is used with a license from Aiphone K.K. “Made for iPhone” means that an electronic accessory has been designed to connect specifically to iPhone, and has been certified by the developer to meet Apple performance standards. Apple is not responsible for the operation of this device or its compliance with safety and regulatory standards. Please note that the use of this accessory with iPhone may affect wireless performance. The ‘Qi’ symbol is a trademark of the Wireless Power Consortium. All rights reserved. Patents: [mophie.com/patents](http://mophie.com/patents).

This device complies with part 15 of the FCC Rules and RSS-Gen of IC Rules. Operation is subject to the following two conditions: (1) This device may not cause harmful interference, and (2) this device must accept any interference received, including interference that may cause undesired operation.

NOTE: This equipment has been tested and found to comply with the limits for a Class B digital device, pursuant to part 15 of the FCC Rules. These limits are designed to provide reasonable protection against harmful interference in a residential installation. This equipment generates, uses, and can radiate radio frequency energy and, if not installed and used in accordance with the instructions, may cause harmful

interference to radio communications. However, there is no guarantee that interference will not occur in a particular installation.

If this equipment does cause harmful interference to radio or television reception, which can be determined by turning the equipment off and on, the user is encouraged to try to correct the interference by one or more of the following measures:

- Reorient or relocate the receiving antenna.
- Increase the separation between the equipment and receiver.
- Connect the equipment into an outlet on a circuit different from that to which the receiver is connected.
- Consult the dealer or an experienced technician for help.

**CAUTION:** To comply with the limits of the Class B digital device, pursuant to Part 15 of the FCC Rules, this device must be used with certified peripherals and shielded cables. All peripherals must be shielded and grounded. Operation with non-certified peripherals or non-shielded cables may result in interference to radio or reception.

**MODIFICATION:** Any changes or modifications of this device could void the warranty.

 STAY POWERFUL™

CRE-0543-A