

Quick Start Guide

Handheld Particle Counter Model 3888 and 3889

For detail description, please refer to the user manual

Include

- Main unit
- USB cable
- CD-ROM: USB driver, Remote software, User manual
- Li-ion battery x 2 (installed in the unit)
- Zero filter with tubing
- Inlet protective cap
- AC adaptor

Functions



Note: Please do not cover or insert anything into the threaded exhaust port on back of the instrument



General setting

Opens the menus to set the unit, calendar, data, sound, language and to display instrument information



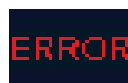
History

Views the historical data or measurements



Measurement setting

Opens the menu to set the mode, alarm, save, remote and temperature/humidity



Error

Tap the Error key to display an error description



Preset

Opens the menu to set or select up to 18 Presets

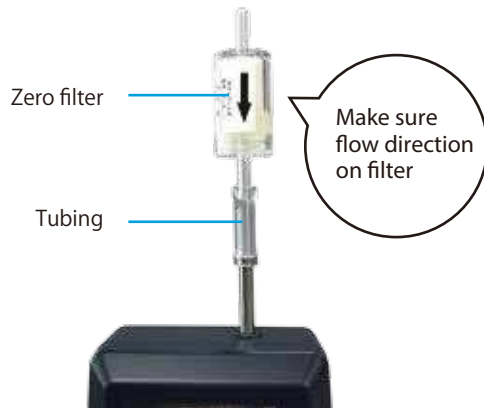


Differential Δ

Opens the Differential Δ display on the Main screen

Purging

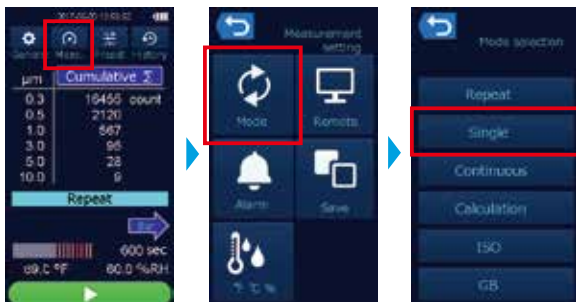
Prior to using the instrument in a clean environment such as cleanrooms, it is recommended to purge the instrument with the provided zero count filter.



- 1 Attach the provided zero count filter to the inlet
- 2 Turn the power on and press the Start button. Perform a continuous measurement for approximately 15 minutes until the measuring count value is suitable for 10 seconds or more.
- 3 After measurement, remove the zero count filter from the inlet

Measurement

- 1 Select measurement mode



Measurement modes

Repeat	Repeats the measurement of configured sampling time and cycle
Single	Performs a measurement of set sampling time only once
Continuous	Continues a measurement until pressing the Stop button
Calculation	Calculates the average, standard deviation, maximum, and minimum after measurements
ISO	Performs measurements in accordance with ISO 14644
GB	Performs measurements in accordance with Chinese National Standard

- 2 Set up location and sampling time



Location

Sets measurement locations by number
Ranges: from 1 to 99

Sampling time

Sets the sampling time of 1 cycle
Ranges: from 6 sec to 99 min 59 sec

- 3 Start measurement



① Go to main screen by pressing Home button

② Press start button to start measurement

* Measurement starts after 10 seconds warm up time

General Setting

Select  on the Main screen to set the unit, calendar, data, language, and sound



Unit

Select one of the following 3 options of units to reflect to the readings displayed on the Main screen and Measurement results.



Language

Selects a language from English, Japanese, Chinese, Spanish



Calendar

Set the date and time



Sound

Sets the operation sound ON/OFF



Data

Confirms the information and perform operation on the entire measured data



Information

Displays the instrument information
Latest calibration date and firmware version