

REPLACING A SIDE PANEL

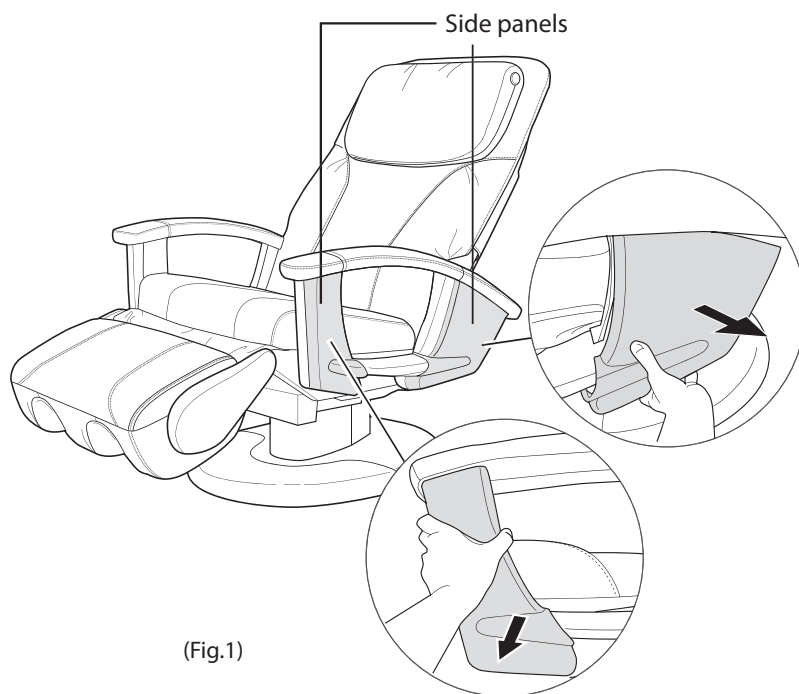
To ensure that Human Touch® products are repaired in a manner that is fully consistent with the practices used during the manufacturing process, Human Touch requires that all product repairs are performed using only factory-new parts and in accordance with these product repair instructions.

SERVICE LEVEL: 1

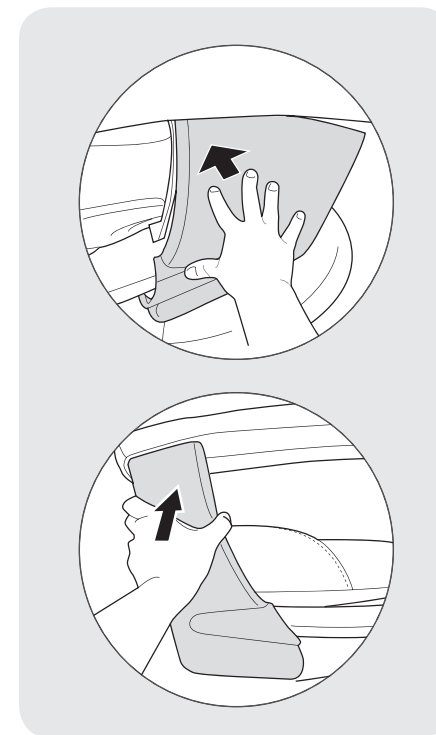
TOOLS REQUIRED: None.

REPLACING A SIDE PANEL

1. Pull outward on the side panel to remove it from the chair base (Fig.1).
2. Align the posts on the inside of the new side panel with the corresponding guides on the chair.
3. Push the new cover firmly into place (Fig.2).
4. Pull gently outward on the cover to ensure that it is secure.



(Fig.1)



(Fig.2)