



Telephone Service

+1(855)400-3853

(Mon-Fri 9:00am-5:00pm EST)



Email Service

support@iveise.com



Amazon Customer Service

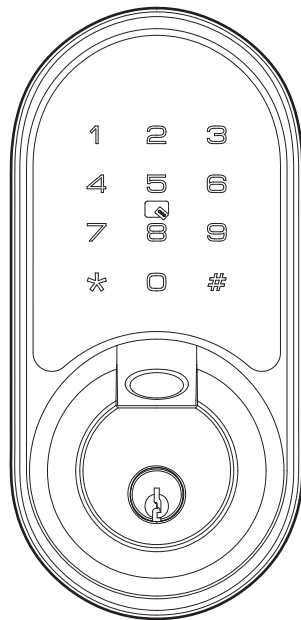
24/7 email support

RZ07

Smart Lock

Installation Instruction

Thank you for purchasing our products. Please review this manual thoroughly before operating your device.
All pictures in this manual are for illustration purpose only. Actual product may vary due to product upgrade.



Installation Instruction

⚠ Read this manual carefully before installing and operating!

P 3 STEP 1: Prepare the door and check dimensions

P 4 STEP 2: Install the latch and strike

P 6 STEP 3: Install exterior assembly

P 7 STEP 4: Install interior assembly

User Guide

P 9 At a Glance

P10 How to Lock / Unlock

P 11 *Definitions*

P 12 Programming guide

P 14 Factory default settings

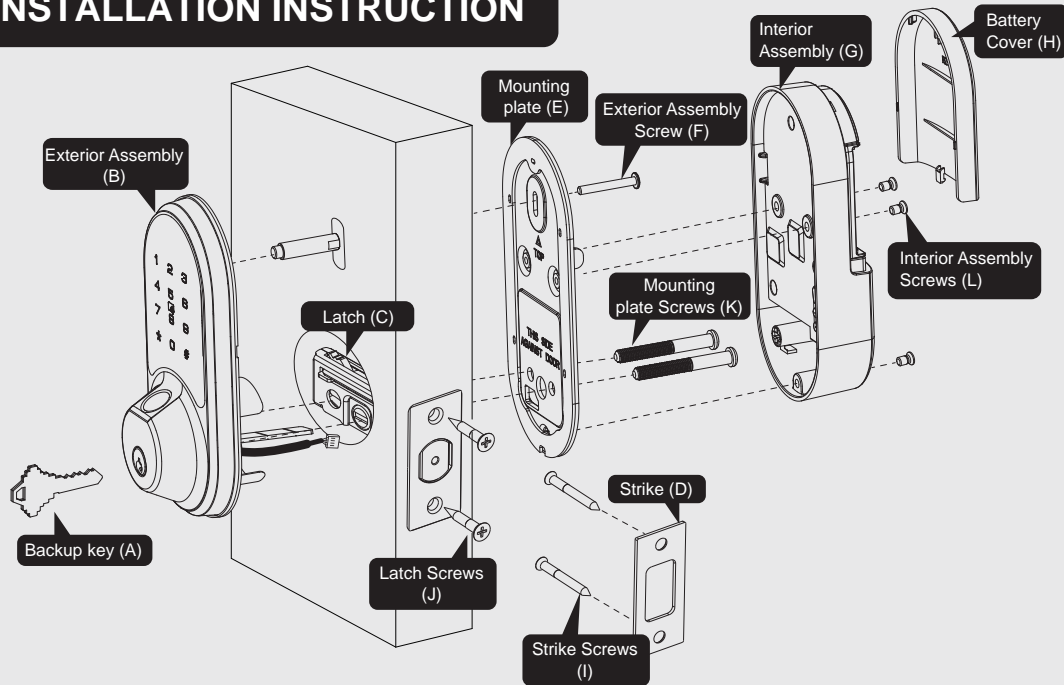
P15 DDLock Guide

TOOL REQUIRED:



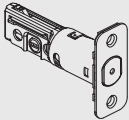


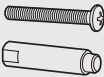
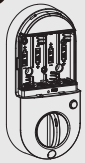







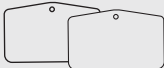


Do not use an electric screwdriver during installation.

INSTALLATION INSTRUCTION



Parts List

<p>A Backup Key x2</p> 	<p>B Exterior Assembly x1</p> 	<p>C Latch x1</p> 	<p>D Strike x1</p> 
<p>E Mounting Plate x1</p> 	<p>F Exterior Assembly Screw (Optional)</p> 	<p>G Interior Assembly x1</p>  <p>H Battery Cover x1</p> 	<p>I Strike Screws x2</p>  <p>J Latch Screws x2</p> 
<p>K Mounting plate Screws x2</p> 	<p>L Interior Assembly Screws x3</p>  <p>M Reset Tool x1</p> 	<p>N Drive-In Collar (Optional)</p> 	<p>O IC card x2</p> 

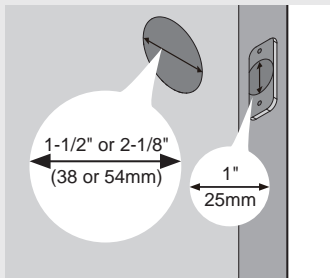
If any parts are missing or damaged, please contact Customer Support.

1 Prepare the door and check dimensions

A

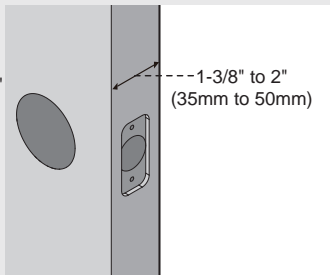
Measure to confirm that the hole in the door is 1-1/2" or 2-1/8" (38mm or 54mm)

Measure to confirm that the hole in the door edge is 1" (25mm).



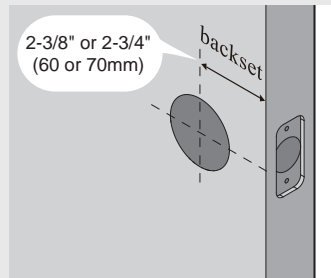
C

Measure to confirm that the door is 1-3/8" to 2" (35mm to 50mm) thick.



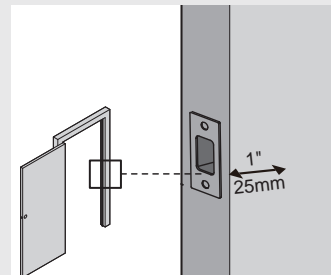
B

Measure to confirm that the backset is either 2-3/8" or 2-3/4" (60 or 70mm)



D

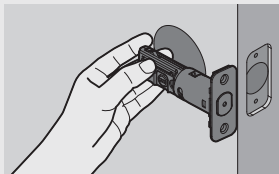
Make sure the hole in the door frame is drilled a minimum of 1" (25mm) deep, to leave enough space for the deadbolt to extend into the door frame when the door is locked.



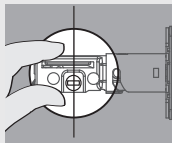
Notes: Make sure the door frame is aligned with the door.
There are no obstructions stuck in the door frame.

2 Install the latch and strike

A Determine backset and adjust the latch

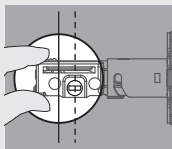


Hold the latch in front of the door hole, with the latch face flush against the door edge. Is the slotted hole centered in the door hole?



YES

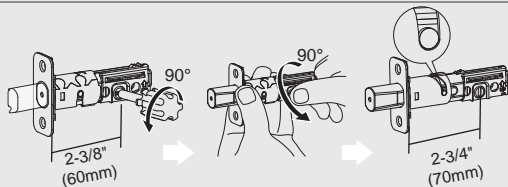
No adjustment is required.
Proceed to next step.



NO

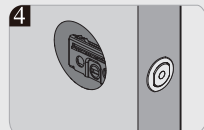
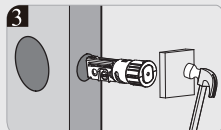
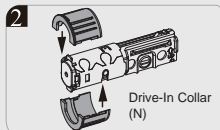
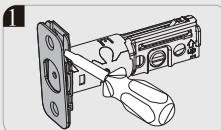
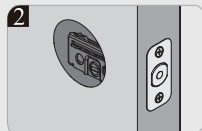
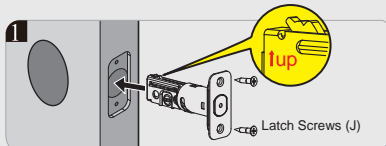
Slotted hole is
NOT centered.

Rotate and pull the
latch as shown to
extend latch.

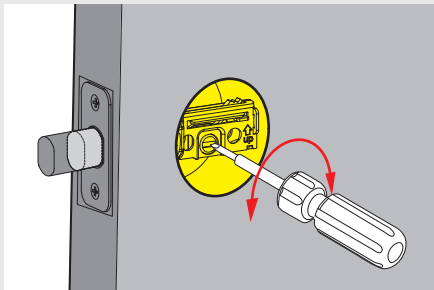


B

Install the latch



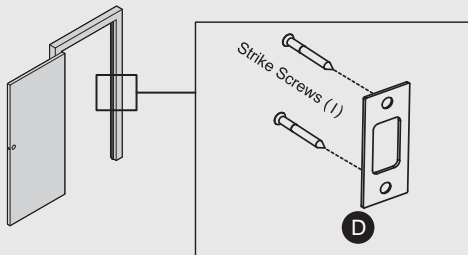
- C** Use a screwdriver to test if deadbolt works smoothly.



- D** Install strike on the door frame.

! IMPORTANT:

Make sure the hole in door frame is drilled a minimum of 1" (25mm) deep.



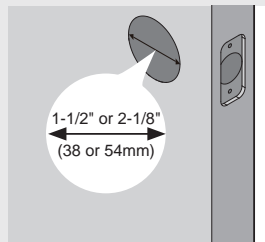
Install exterior assembly

! IMPORTANT:

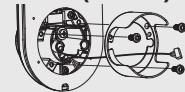
Before installation, make sure the latch is fully retracted (in the unlocked position)



A Measure the diameter of the hole in the door.



1-1/2" (38mm)



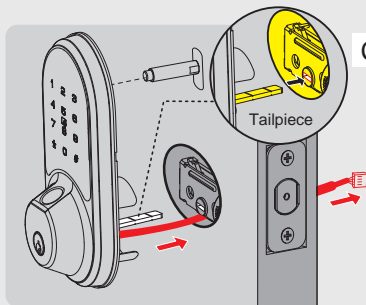
Remove the spacer

2-1/8" (54mm)

Proceed to next step

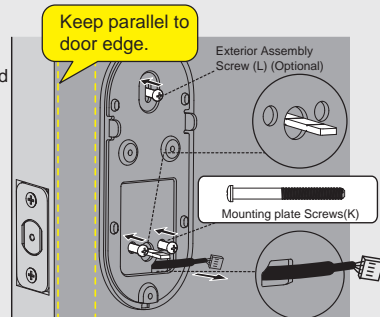
B

With the latch fully retracted (in the unlocked position), route the cable below the latch, and insert the tailpiece through the slot in the latch.



C

Secure the mounting plate with the supplied screws. Do not overtighten screws.



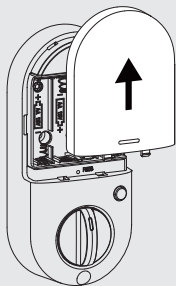
4 Install interior assembly

A

Push the battery cover out in the direction as illustrated.

! IMPORTANT:

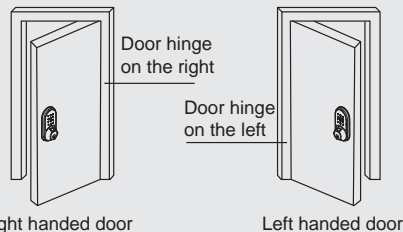
Do not load batteries until lock is completely installed.



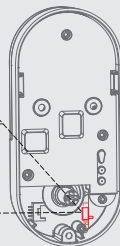
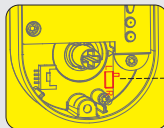
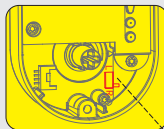
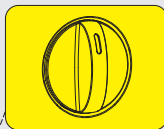
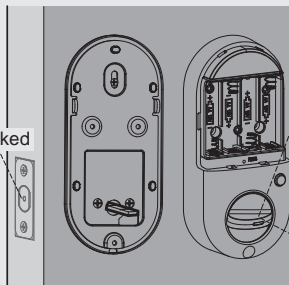
B

Determine the door is right handed or left handed.

Notes: If the direction of the slide switch is set incorrectly, it can be reset in DDLock App.



Unlocked



Right handed door

Move the slide switch to "R"

Turn the thumb turn to the Vertical position.

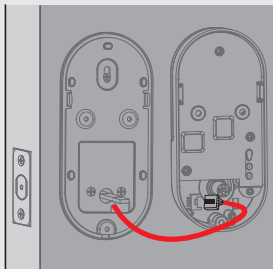
Left handed door

Move the slide switch to "L"

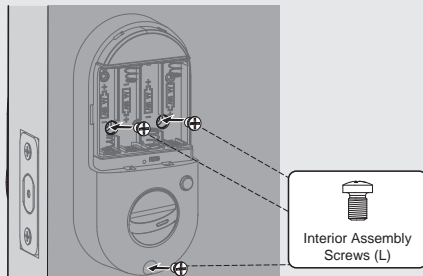
Turn the thumb turn to the Horizontal position.

4 Install interior assembly

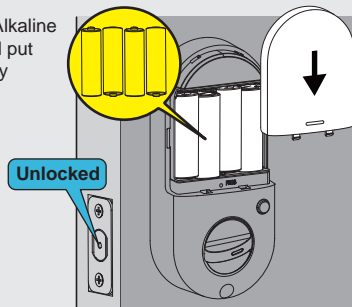
- C** Insert the cable connector to the socket. Push the connector in firmly until it is completely attached.



- D** Attach Interior Assembly to Mounting Plate and tighten 3 Screws.



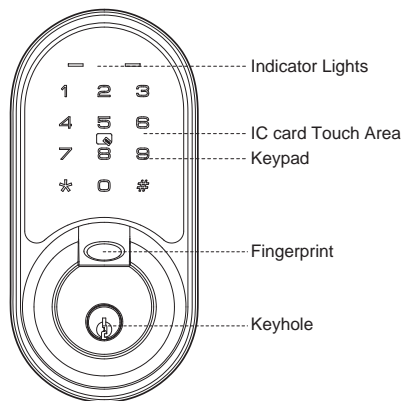
- E** Insert 4 AA Alkaline batteries and put on the battery cover.



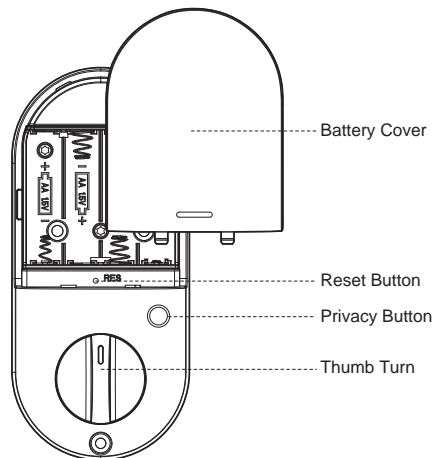
USER GUIDE

At a Glance

Exterior Assembly

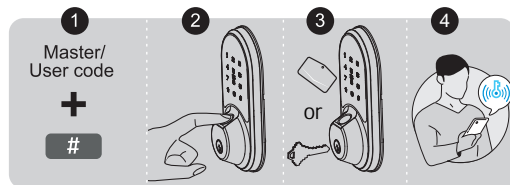


Interior Assembly

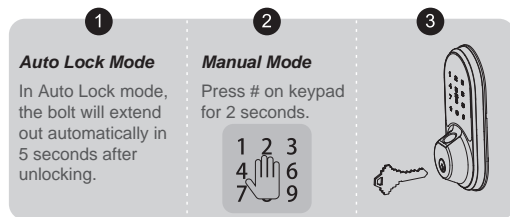


How to Lock / Unlock

UNLOCK the door from outside

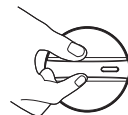
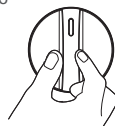


LOCK the door from outside



UNLOCK the door from inside

Rotate the thumb turn to
Unlock position.



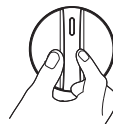
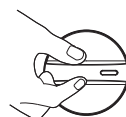
LOCK the door from inside

Auto Lock Mode

In Auto Lock mode,
the device will be
locked automatically.

Manual Mode

Rotate the thumb turn to Lock Position.



Definitions

• **Master Code**

Required for programming user codes, fingerprints and IC card. The default master code needs to be changed before programming.

After pairing DDLock App successfully, the master code will be changed to a random 7 digit number, and you can change it to your own master code in App.

• **Auto Lock & One-touch Lock**

Automatically locks the deadbolt after the door closed in 5 seconds. Auto Lock is disabled by default. The Auto Lock time can be customized between 1 and 900 seconds.

One-touch Lock is pressing and holding "#" on the touch keypad for 2 seconds to lock from outside.

• **Private Mode**

Press and hold "Privacy button" on the inside panel for more than 2 seconds to enable Private Mode.

Press "Privacy button" once to disable Private Mode.

In Private Mode, it's unable to unlock by Password, Fingerprint, IC cards. Bluetooth, Physical Key and Admin password unlocking are available.

• **Wrong Entry Limit**

After 5 times unsuccessful attempts at entering an invalid password, the device will shut down for 2 minutes.

• **Passage Mode**

Enable Passage Mode, the lock will stay Unlocked until it's locked manually.

In Passage Mode, Auto-lock will be disabled.

• **Anti-peeping password**

Entering random numbers before or after correct password will also unlock the door, which can prevent the password being exposed. The length of anti-peeping password should be within 16 digits.

83618 137192 14710

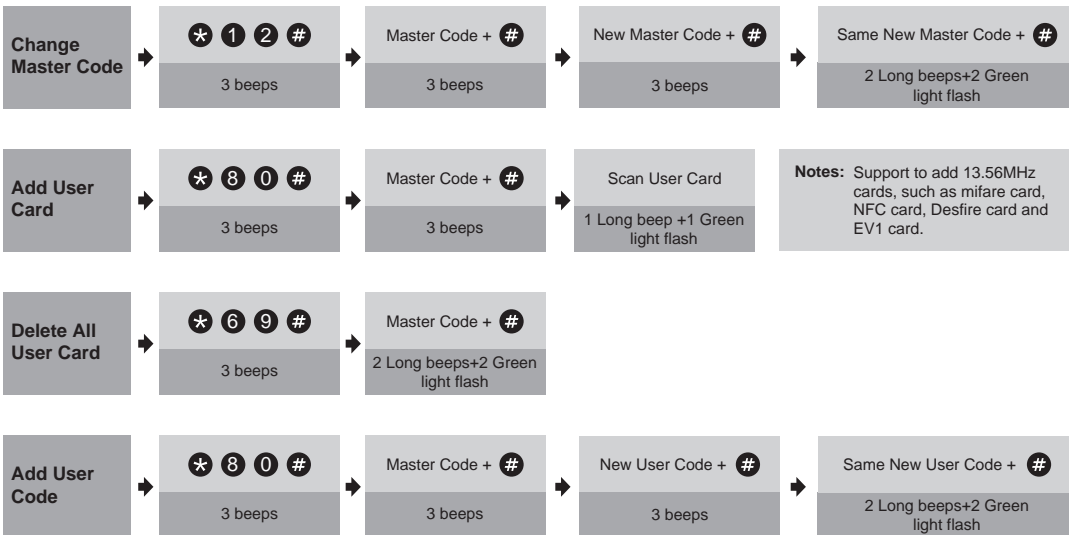
password
----- Random digits -----

Programming Guide

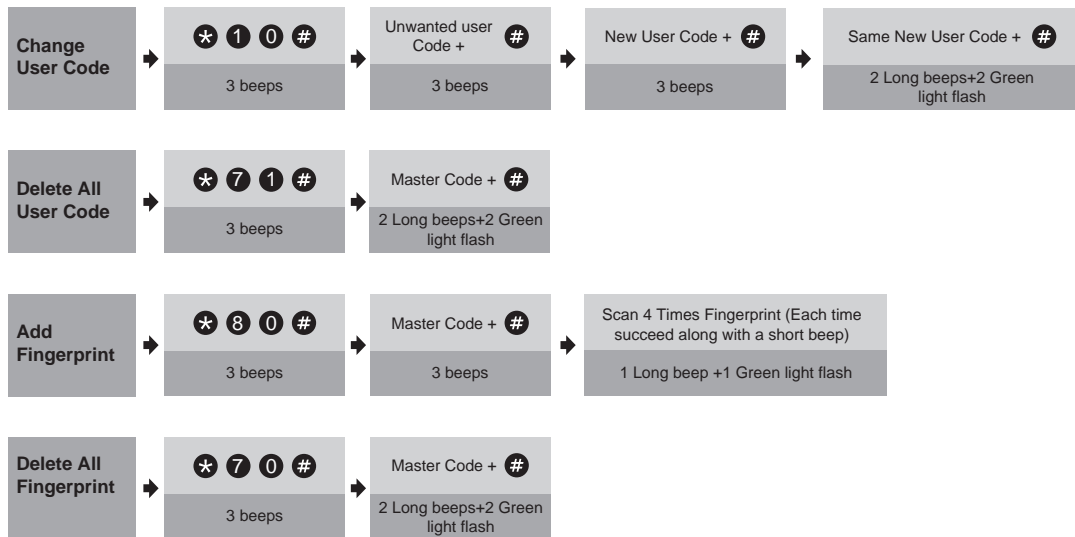


IMPORTANT:

The default Master Code is **123456**. It is required that you change it to a code of your own before programming.



Programming Guide



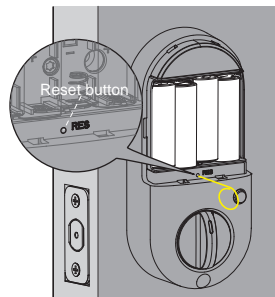
Factory Default Settings

How to Reset?

Press and hold the Reset button on the interior assembly for 5 seconds by using the Reset tool, until you hear a short beep and Green light flashes once.



IMPORTANT: The Reset Button must be turned on in DDLock App before resetting.



Settings	Factory Default
Master Code	123456
Auto Lock	Off
Passage Mode	Off
Reset Button	On
Lock Sound	On
Wrong Code Entry Limit	5 times
Shutdown Time	2 minutes