

G900 package contents

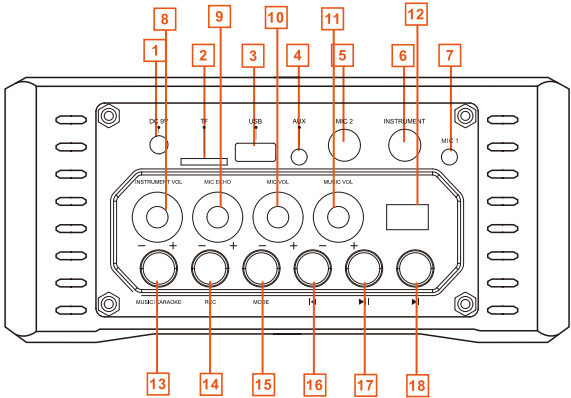
- 1 x Speaker
- 2 x UHF Wireless microphone
- 1 x Remote control
- 1 x 3.5mm adapter cable
- 1 x Power adapter
- 2 x AAA battery (For remote)
- 4 x AA battery (For microphone)

Specifications

- Output Power: 40W
- Input voltage: 9V 1A
- Battery Voltage: DC 9V
- Battery Capacity: 6000mAh
- Battery Type: Rechargeable Lithium Battery
- Frequency Response: 60Hz-20KHz
- Charging time: 3~4 hours
- Music playing time: 6~10 hours
- Voice amplifier time: 12~15 hours
- Weight: 2350g
- Size: 7.48 x 3.54 x 8.26 inch
- Support format: MP3/WMA/WAV/FLAC/APE

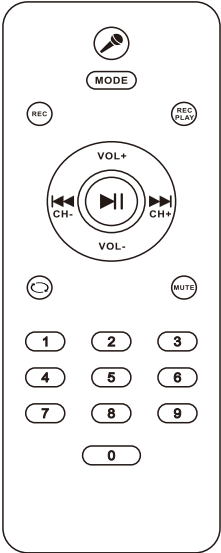
Guide to control and setting

① DC 9V Charging port	⑩ Adjust Mic Volume
② SD Card Interface	⑪ Adjust Music Volume
③ USB Disk Interface	⑫ Power On/Off
④ AUX IN Port	⑬ Music/KARAOKE
⑤ 6.5mm MIC IN	⑭ Record
⑥ 6.5mm Instrument In	⑮ Mode Selection
⑦ 3.5mm MIC IN	⑯ Previous Track
⑧ Adjust Instrument Volume	⑰ Play/Pause
⑨ Adjust Mic ECHO Volume	⑱ Next Track



- NOTE:**
1. Long press the “REC” button can delete your record file.
 2. Long press the “M” button can disable the device connection.
 3. Music/KARAOKE button: remove vocals from song to make a karaoke.

The remote control



Key	Function
	Remove vocals from song to make a karaoke.
MODE	Switch mode:Pairing , FM, USB, SD, LINE IN
REC	Record
REC PLAY	Record play
	Play/Pause
VOL+	Volume increase
VOL-	Volume decrease
/ CH-	Previous song/channel, Backward
/ CH+	Next song/channel, Fast-forward
	When playing music via USB flash drive or SD card, Press once to enter single song loop mode, then press again to revert to all songs or record play mode.
MUTE	Mute the song, but it will not pause.
0~9	When playing music via USB flash drive or SD card, you can select the song at your will quickly. For example, if you need to play the 205th song, you can press the “2” “0” “5”three button in sequence and wait for one second, then it will auto switch to the 205th song.

Wireless microphone

Instructions for Microphone Operation

- Please Note:
1. Turn on the microphone and it will be automatically connected to the speaker, then please adjust the microphone volume on the speaker to use.
 2. When the display on the microphone is flashing, it means that the power is about to run out, please replace the battery for better sound play.

FCC Warning Statement

Changes or modifications not expressly approved by the party responsible for compliance could void the user’s authority to operate the equipment. This equipment has been tested and found to comply with the limits for a Class B digital device, pursuant to Part 15 of the FCC Rules. These limits are designed to provide reasonable protection against harmful interference in a residential installation. This equipment generates uses and can radiate radio frequency energy and, if not installed and used in accordance with the instructions, may cause harmful interference to radio communications. However, there is no guarantee that interference will not occur in a particular installation. If this equipment does cause harmful interference to radio or television reception, which can be determined by turning the equipment off and on, the user is encouraged to try to correct the interference by one or more of the following measures:

- Reorient or relocate the receiving antenna.
- Increase the separation between the equipment and receiver.
- Connect the equipment into an outlet on a circuit different from that to which the receiver is connected.
- Consult the dealer or an experienced radio/TV technician for help.

This device complies with part 15 of the FCC Rules. Operation is subject to the following two conditions: (1) This device may not cause harmful interference, and (2) this device must accept any interference received, including interference that may cause undesired operation. The device has been evaluated to meet general RF exposure requirement.

Function

Pairing Mode

1. Turn on the speaker, the default mode is Pairing when turned on, and the screen flashes to show blue rhode.
2. Turn on the Pairing mode of your device, search “G900” for pairing, when the voice announces “Connected”, the pairing is successful.
3. To adjust the volume of music, please adjust the “MUSIC VOL” knob on the speaker or adjust the volume on your connected device.
4. Long press the “M” button can disable the device connection.

FM Mode

1. Press the “mode” button on the speaker or remote control to switch to FM radio mode.
2. Long press the “M”button to search FM channel automatically, the channel will be saved automatically and the screen display “P01”, “P02”. and so on.
3. The channel to be saved is called “P01” “P02”. , you can press the “Previous song” or “Next song” button to select a saved channel.

Record Mode

1. Insert the SD card or USB flash drive firstly, please ensure enough storage space.
 2. Please make sure there is at least one song in the SD card or USB flash drive, otherwise this mode will not work because it is not recognized.
 3. Please turn on the microphone to record before entering to “REC” mode, if you do not use the microphone to record, the sound of the recording will be very low.
 4. Press the “REC” button to start recording, press “REC” button again to finish recording. During this period, you may pause and continue recording by pressing “M” button.
 5. Long press the “REC” button can delete your record file.
 6. Unplug the USB flash drive or SD card, insert it to your computer to check the recording file. The recording file will be MP3 format.
- Note:**
1. Please make sure you have increase the “MUSIC VOL” knob when you are recording.
 2. Please make sure you have increase the “INSTRUMENT VOL” knob when you are using the “instrument in” port to record.

SD Card Mode

1. Insert the SD card to active the SD card mode, it will show “Sd” on the speaker screen and the voice announces “SD card mode”. The speaker will play music after the SD card mode active. Note: Please make sure there is at least one song in the SD card, or it will not be recognized.
2. You can press the “M” “M”button to select the previous/next song, press the “M” button to play/pause the music. Long press the “M” “M”button to backward/fast forward the song.
3. The file system of the SD card must be FAT32 format.

USB Driver Mode

1. Insert the USB flash drive to active the USB driver mode, it will show “usb” on the speaker screen and the voice announces “USB driver mode”. The speaker will play music after the USB driver mode active.
- Note:** Please make sure there is at least one song in the USB flash drive, or it will not be recognized.
2. You can press the “M” “M”button to select the previous/next song, press the “M” button to play/pause the music. Long press the “M” “M”button to backward/fast forward the song.

LINE IN Mode

1. The speaker has a “LINE INE” jack (3.5mm AUX jack) to connect devices. (Come with a 3.3FT 3.5mm AUX cable)
2. The speaker will automatically switch to LINE IN mode when your devices plug into the AUX port, and the voice will announces “LINE IN mode”.
3. One end of the cable is plugged into the “LINE IN” jack, and the other end is connected to the audio output port of the devices, such as a computer, mobile phone and amplifier.
4. You can switch to the LINE IN mode by pressing the “MODE” button on the speaker/remote control if you have plug in your devices.

MIC IN

1. The speaker has two “MIC IN” jack (6.5mm and 3.5mm jack).
2. If connected to a wireless microphone, please plug the receiver to the MIC IN port to use.
3. You can increase/decrease your microphone volume by rotating the “MIC VOL” knob.
4. Please note that the frequency of the other wireless microphone cannot be 681.20MHz/689.20MHz, otherwise it will interfere with the included microphone.

Instrument In

1. The speaker has a “Instrument In” jack (6.5mm AUX jack) for a wired device, such as electric guitar and so on.
2. You can increase/decrease your instrument volume by rotating the “INSTRUMENT VOL” knob.

MIC ECHO Function

1. You can enhance your microphone’s sound by rotating the MIC ECHO button, suitable for multi-person and spacious areas.
2. Please note that the ECHO function only works for the microphone, it doesn’t work on the music.

Charge the Speaker

1. When the speaker voice announces “low battery” and the screen flashes, it means the speaker is in low battery level. Then please use the included charging adapter to charge.
2. When charging, the charging indicator lights up, and it is red light. When fully charged, the indicator light will turn to blue. The battery indicator on the screen will flash add batteries from bottom to top.

Warranty information

This product carries ONE YEAR limited warranty.

For more regarding to this warranty, please contact:

support@giecy.com

<https://www.facebook.com/giecytechnology>

Important Product Information

Product Model_____

Serial Number_____