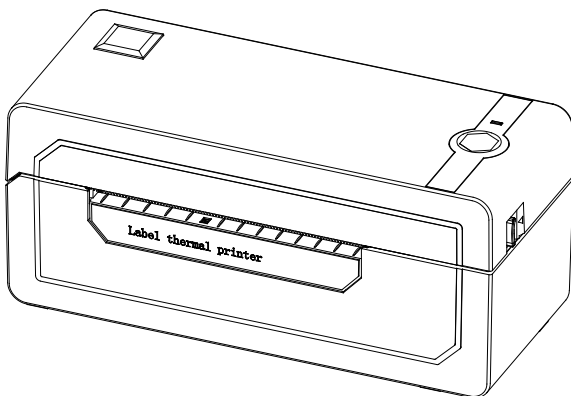


JADENS[®]



Thermal Label Printer

JD-268BT

User Manual

Version: 2.0

Thanks for choosing us!

Customer Support

Please kindly contact us if you have any trouble or question when installing and using

 support@jadens.com

 1-800-752-7660

 support.jadens.com

How can we help you today?

Enter your questions here 

Scan the below QR code to talk with us



Customer Support

Scan or upload this QR code using the WhatsApp camera to add us



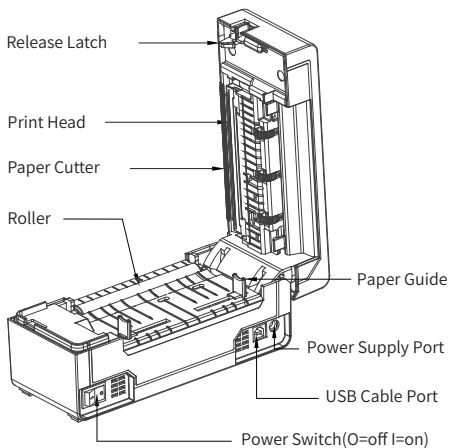
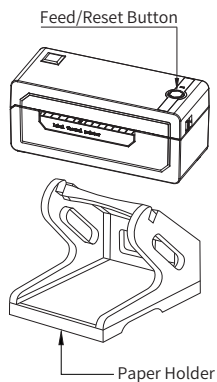
Extended Warranty

Please contact Warranty@jadens.com to extend the warranty to 3 years with your order No.

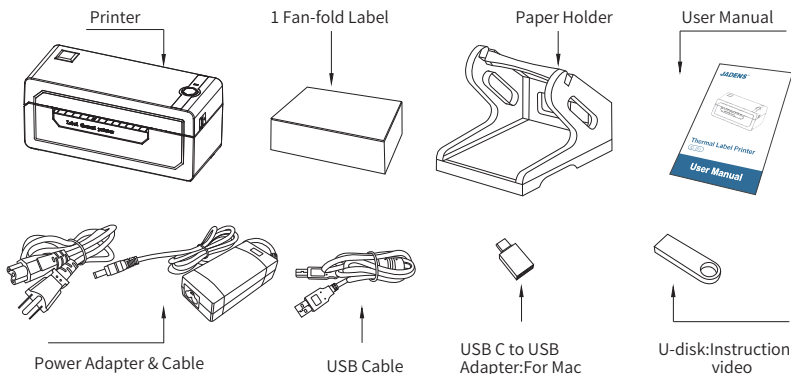
Content

| | |
|---|----|
| 1. Appearance | 1 |
| 2. Packing list | 1 |
| 3. Printer connection | 2 |
| 4. The suitable label size | 3 |
| 5. How to feed label | 3 |
| 6. Installation for Windows | 5 |
| 7. Installation for Mac | 11 |
| 8. Printer preference setting | 16 |
| 9. Smartphone APP Setup | 24 |
| 10. Important Tips: Print label of multiple size using "Take a snap shot" | 24 |
| 11. Frequently asked questions | 28 |
| 12. Pro tips | 28 |
| 13. Driver removal | 28 |
| 14. LED indicator | 32 |
| 15. Specifications | 32 |
| 16. Safety tips | 33 |
| 17. Maintenance | 33 |

1.Appearance



2.Packing list



If any accessories missing, please contact us to get support.

3. Printer Connection

Note:

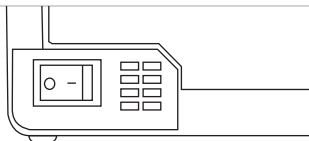
- Ensure the printer is OFF.
- Use original power adapter only in case harm or injury.
- Unplug if no use in a long time.



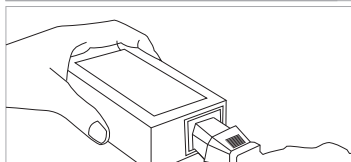
OFF



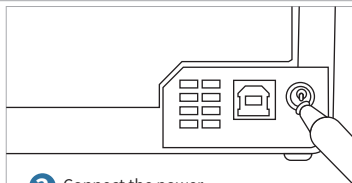
ON



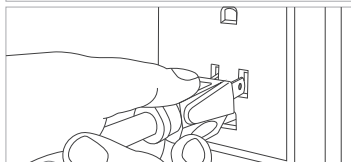
1 Ensure the printer is off



2 Attach the power cord to the adapter



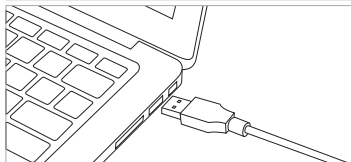
3 Connect the power



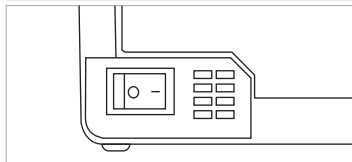
4 Plug the power cord into the socket



5 Connect the USB cable to the printer



6 Connect the printer and computer

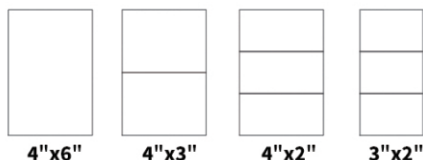


7 Turn the power on

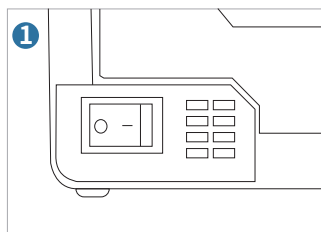
4.The suitable label size

- Jadens printer works with any Thermal Direct Label, and compatible with a width range from 1.57" to 4.1" and length over 1.18"
- Ideal for 4"*6"

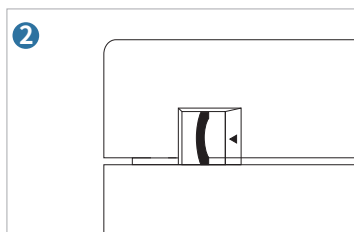
Label standard size



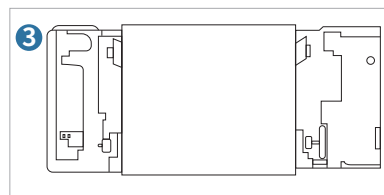
5.How to feed label



Ensure the printer is off

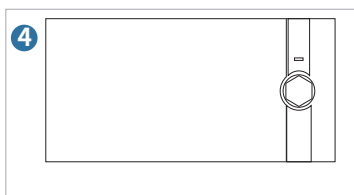


Pull the release latch to open the cover

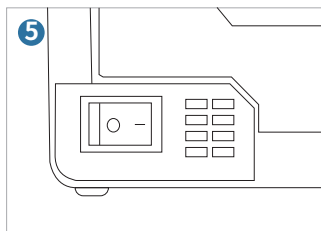


Load the label and adjust the paper guide to fit the width of paper.

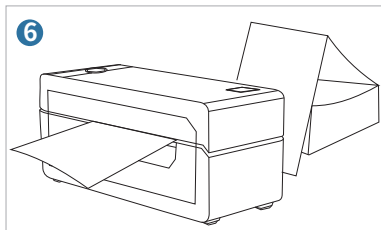
The label you peel off should be facing up (toward the ceiling)



Carefully close the cover



Turn the power on

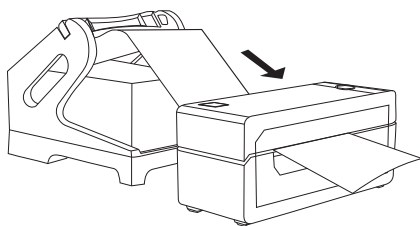
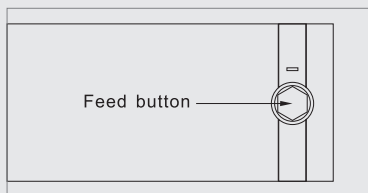


Jadens will start automatic label identification, the label will go back and forth for several times and then be positioned at the tear-off point. Jadens is ready to print.

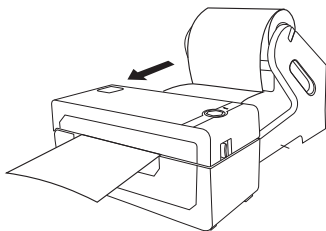


Tips:

Anytime you change your label, run the automatic label identification. Press and hold the feed button until you hear one beep.



Fan-fold Type Label Loading



Roll Type Label Loading

6.Installation for Windows



Note:

Recommend to close security software before installation in case of preventing installation, and you can open it again after installation.

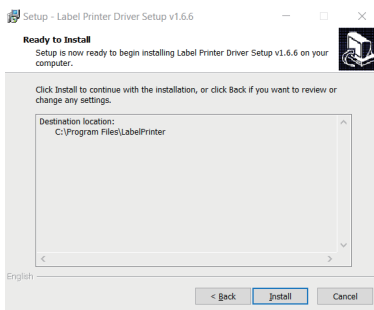
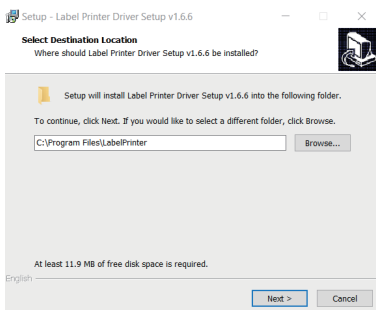
■ Win 7 or later ✓ Chrome book, Linux, Win ARM ✕

■ Installation guide video in U-disk for better reference.

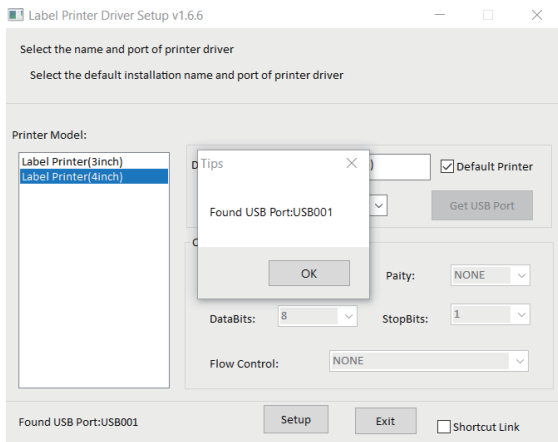
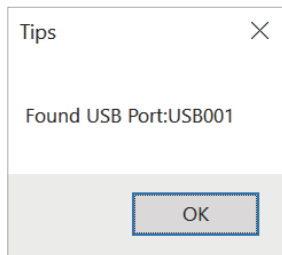
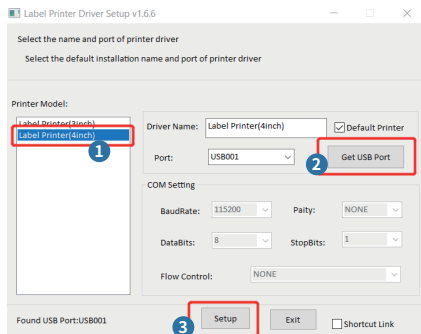
Step1: Install the driver

- Connect power and computer(Please skip this step if you have finished it before.)
- Install the driver and printer for Windows
 - Copy the driver in the U-disk(Label Printer Driver Setup.exe) to your PC desk, open and install it as below:

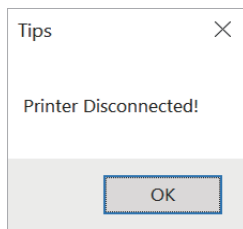
(You can also download 'Driver for Windows (JD-268BT)' from <https://www.jadens.com/support/download/label-printer-drivers/>
Driver version may be updated, see latest info at support.jadens.com.



- > Click 'Get USB Port' to get the USB port which your computer connect to the printer, and then click 'Setup'. The printer will be successfully set up.



If you get the tips 'Printer Disconnected' that means your computer and printer are not connected. Please connect them via USB port or turn on power, then install again.



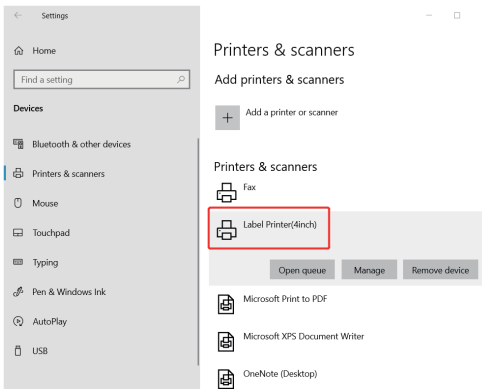
c. After setting up the printer, check your computer if the printer has installed or not.

Go to the 'Setting' > click 'Device' > click 'Printer & scanners', and then you will find the printer 'Label Printer(4inch)'. Click 'Manage' to print a test page and print labels successfully, that means you have set up the printer successfully.



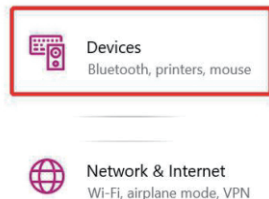
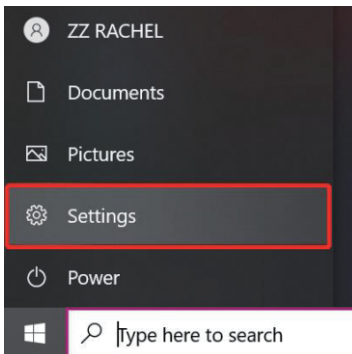
Note:

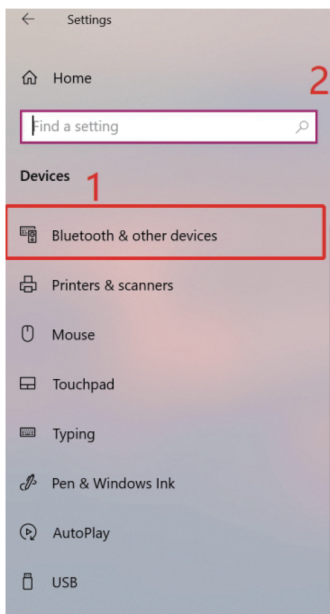
If you can't print successfully, please restart your computer and printer, then install driver again. Repeat installation will create duplicate copies of the printer in your operating system such as "Printer(4inch)(1,2...)" . Only keep and use the latest one you install.



Step2: Add the Bluetooth of Printer

a. (Keep the printer and computer connected with USB cable). Click 'Setting' > 'Devices' > 'Bluetooth & other devices' > 'Add Bluetooth or other device'.





Bluetooth & other device



Add Bluetooth or other device

Bluetooth

☒ On

Now discoverable as "DESKTOP-A1AH01U"

Mouse, keyboard, & pen



USB Receiver

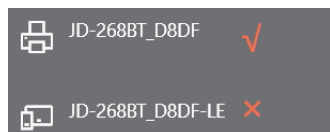
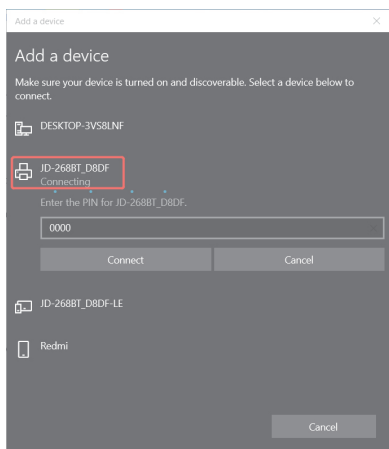
Other devices



MXT USB Device

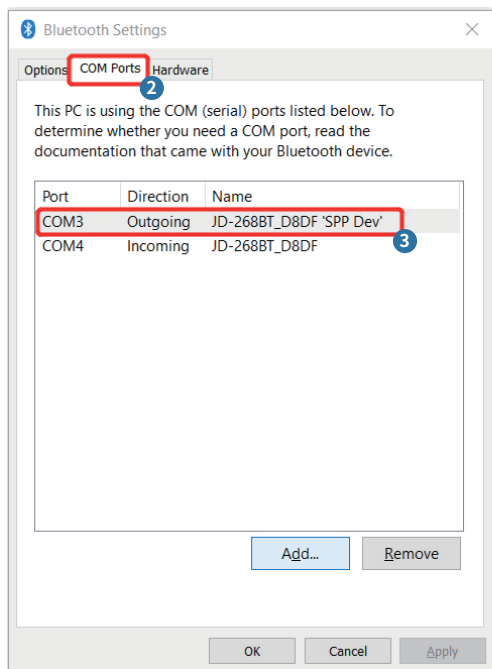


Show notifications to connect using Sw



Step3: Match the COM port

a.Click ' Bluetooth & other device' > ' More Bluetooth options' > 'COM Ports' > Check OUTGOING port of the Bluetooth ' JD-268BT_ XXXX' (XXXX are suffixes, which will vary depending on the different printer) and **mark down the COM number** (For example, here is COM3).



Turn on Bluetooth even faster

To turn Bluetooth on or off without opening Settings, open action center and select the Bluetooth icon.

Related settings

[Devices and printers](#)

[Sound settings](#)

[Display settings](#)

[More Bluetooth options](#)

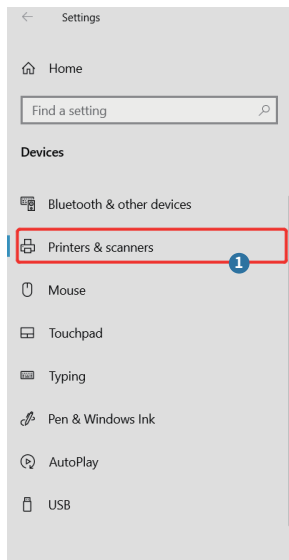
[Send or receive files via Bluetooth](#)

[Get help](#)

[Give feedback](#)

b.Change printer's port to the COM that matches to the Bluetooth.

Click'Printer & Scanners'> Find'Label Printer(4inch)'>'Manage'>'Printer properties'>'Ports' > Check in the Ports match to your Bluetooth Port(For example, here is COM3)>Click'OK'.



Printers & scanners

Add printers & scanners



Printers & scanners



Fax



JD-268BT_D8DF

Driver is unavailable



Label Printer(4inch)

Open queue

Manage

Remove device



Microsoft Print to PDF



Microsoft XPS Document Writer

Note:
Please ignore the message
'Driver is unavailable', as
it is normal and won't affect
the printing.

Label Printer(4inch)

Manage your device

Printer status: Idle

Open print queue

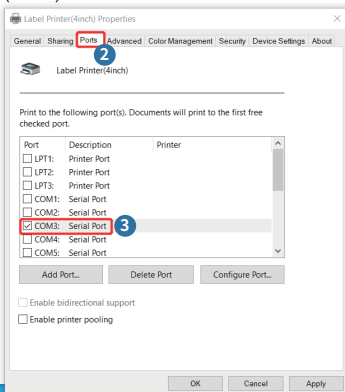
Print a test page

Run the troubleshooter

Printer properties

Printing preferences

Hardware properties



If you can't find which COM
port match with Bluetooth
port, please restart your
computer and printer, then
install driver again.

c.Now you can unplug the USB cable from computer, and then Open PDF file (recommend to use Adobe)>Choose printer named 'Label Printer(4inch)'.>You may set up printer preference like darkness, speed, size, then click 'Print' (via Bluetooth).



Note:

If you can't print successfully, please restart your computer and printer, install again.

7. Installation for Mac

- JADENS is only compatible with MAC OS V 10.9 or later.
- Installation guide video in U-disk for better reference.

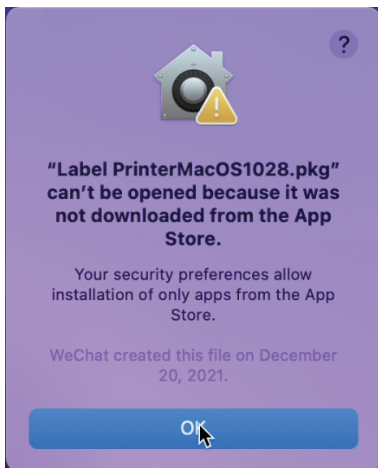
Step1:Install the driver for Mac

a.Connect power and computer

b.Copy driver 'Label Printer-MacOS.pkg'to desk and install it.(You can also download 'Driver for Mac (JD-268BT)' from

<http://www.jadens.com/support/download/label-printer-drivers/>

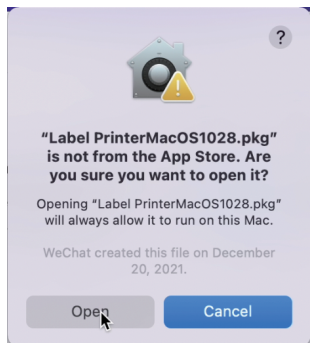
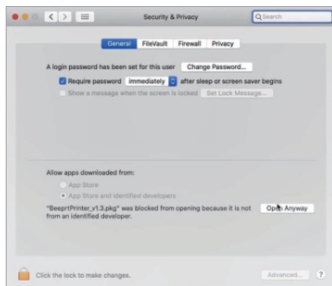
Driver version may be updated, see latest info at support.jadens.com.



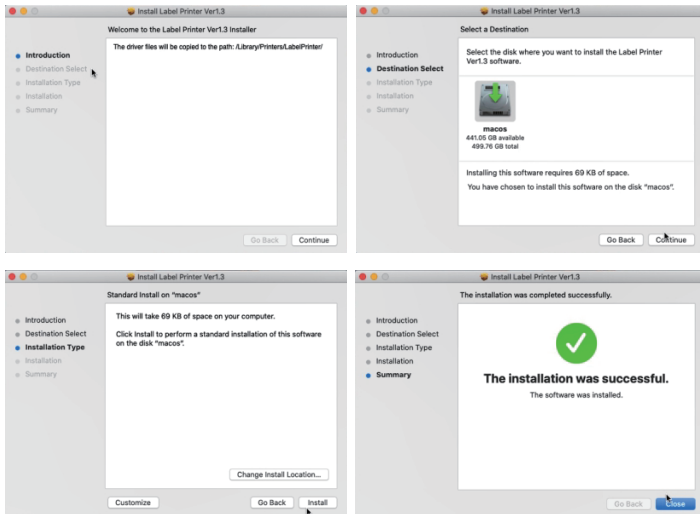
- c. Open 'System Preferences', and click on 'Security & Privacy'. (If you don't see the warning, you can skip this step)



- d. Click on 'Open Anyway' button. (If you don't see the warning, you can skip this step)



- e. Click on 'open' and continue to install the printer. Follow the installation steps until you see 'The installation was successful' window.



- f. Open 'System Preferences' >> click 'Printer and Scanners'.

