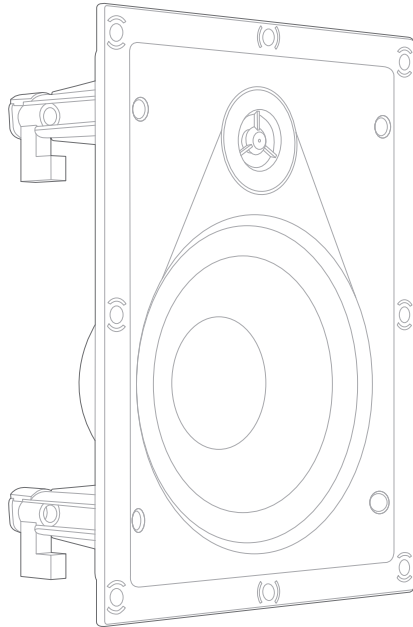
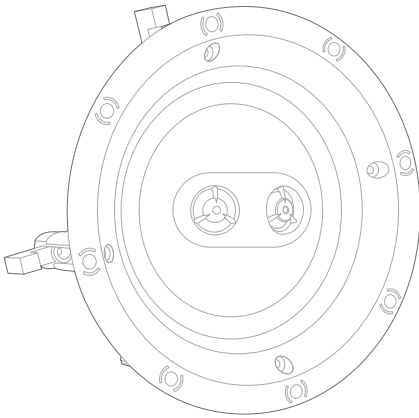




B-Series
Owner's Manual
Mode d'emploi
Manual del propietario
Montageanleitung
Manuale utente
Руководство пользователя
取扱説明書
用戶手冊
擁有者手冊



INTRODUCTION

Thank you for purchasing your new JBL B-Series architectural loudspeaker. This loudspeaker is designed to bring the best sound to your home. We urge you to take a few minutes to read through this manual, which describes the product and includes step-by-step instructions to help you set up and get started.

Customer Support: Please contact your dealer if you have any questions about your product, its installation or its operation. For more information about this product, or to contact JBL please visit our website at www.JBL.com.

BOX CONTENTS

- 1 x Loudspeaker
- 1 x Loudspeaker grille
- 1 x Wall cut-out template
- 1 x Owner's manual

MINIMUM TOOLS REQUIRED FOR INSTALLATION

- Screwdriver
- Wire strippers
- Level
- Stud Finder
- Saw

IN-WALL LOUDSPEAKER PLACEMENT

JBL B-Series in-wall loudspeakers are designed for standard drywall construction, ceiling and drop ceilings with at least 3/8" wall material thickness. For stereo or home theater listening, position the loudspeakers so the tweeters are close to ear-level, and position the left and right speakers closely with the television. (See Fig 1 & 2) For background listening, position the loudspeakers in any convenient location.

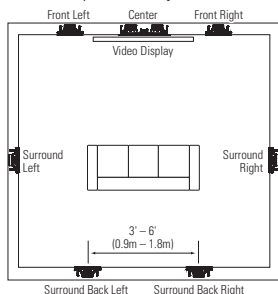


Figure 1

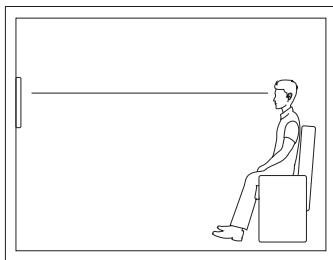


Figure 2

In-Ceiling Speaker placement

JBL B-Series in-ceiling loudspeakers are designed for standard drywall ceilings and drop ceilings with at least 3/8" thick wall material. In drop ceiling installations, JBL recommends to replace the ceiling tile with plywood or medium density fiber board to prevent sagging ceiling tiles. For home theater, position the loudspeakers as in Figure 3. For background music, position the speakers in any convenient location to distribute the sound throughout the room. (Figure 4)

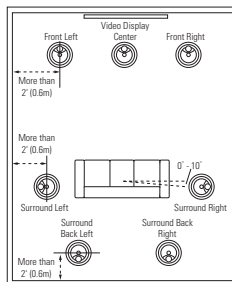


Figure 3

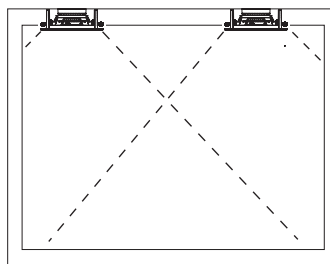


Figure 4

Installation

Make sure to allow at least 1" (25.4mm) between the edge of the supplied installation template and any rafters or other obstructions behind the wall, so the speaker's locking mechanism will have room to engage fully. Be sure that there are no studs, lengths of conduit, pipes, heating ducts or air returns in any wall/ceiling cavity that will interfere with the speaker.

1. Use the provided wall cut-out template to mark the location of the loudspeaker. Use a saw to cut the appropriate size. (Figure 5)
2. Run speaker wiring to the wall openings. Be sure to comply with all local construction and building codes. Attach the speaker wire to the loudspeaker's appropriate speaker terminals. Confirm that each wire matches the correct color and polarity on the system amplifier. (Figure 6)
3. Insert the loudspeaker into the opening. Use your screwdriver to tighten the four screws on the loudspeaker front side. The loudspeaker brackets will clamp down on the wall material. (Figure 7)
4. If needed, paint speaker grille before inserting on the loudspeaker. Gently remove the cloth before painting and replace after the paint dries. This loudspeaker grille is designed to support most types of interior paint.
5. Place the grille into the loudspeaker. (Figure 8)

Note: Once the grille is installed, you may need to use a screwdriver to remove the grille from the loudspeaker.

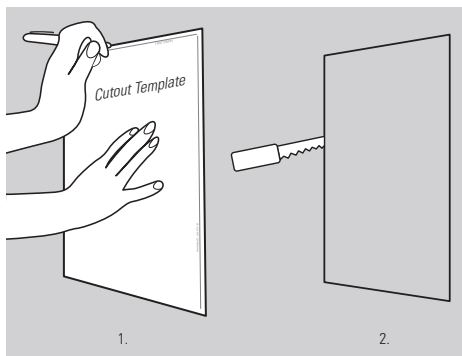


Figure 5

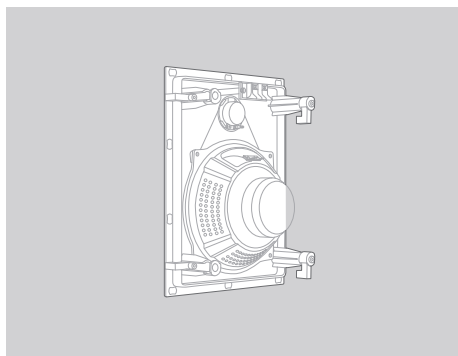


Figure 6

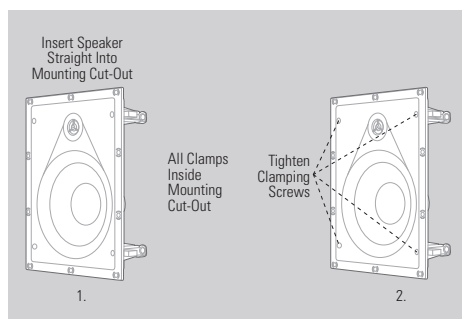


Figure 7

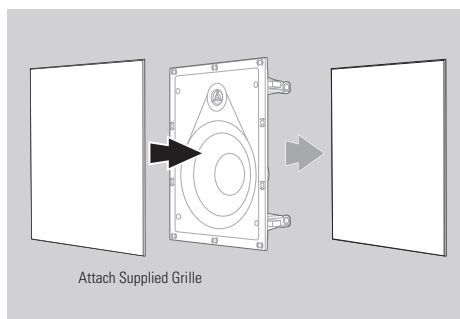


Figure 8

WARNING: HARMAN International assumes no responsibility for improper installation of hardware or for any personal injuries or product damages resulting from improper installation or a fallen loudspeaker.

Limited Warranty

JBL B-Series speakers are warranted against defects. The duration of the speaker's warranty depends on the laws in the country in which it was purchased. Your local JBL retailer can help you determine the length of your warranty.

Specifications	B-6IC	B-8IC	B-6ICDT	B-6IW	B-8IW
Nominal Impedance	4 ohm	4 ohm	4 ohm	4 ohm	4 ohm
Power (WRMS/Peak)	35/140W	40/160W	35/140W	35/150W	45/160W
Frequency Response	50Hz – 20kHz	45Hz – 20kHz	50Hz – 20kHz	50Hz – 20kHz	45Hz – 20kHz
Loudspeaker Sensitivity	90dB	92dB	90dB	91dB	91dB
Woofer	6.5" (165mm) Poly woofer	8" (203mm) Poly woofer	6.5" (165mm) Poly woofer	6.5" (165mm) Poly woofer	8" (203mm) Poly woofer
Tweeter	0.5" (13mm) Polymer Tweeter	0.5" (13mm) Polymer Tweeter	0.5" (13mm) Polymer Tweeter	0.5" (13mm) Polymer Tweeter	0.5" (13mm) Polymer Tweeter
Cutout Dimensions	7.9" (202mm)	9.6" (243mm)	7.9" (202mm)	9.7" × 7.2" (246mm × 182mm)	11.7" × 8.8" (299mm × 223mm)
Grille Finished Dimensions	9.1" (232mm)	10.7" (272mm)	9.1" (232mm)	8.4" × 10.9" (213mm × 277mm)	10" × 12.9" (255mm × 329mm)
Mounting Depth	3.6" (92mm)	3.9" (100mm)	3.6" (92mm)	3.3" (84mm)	3.7" (96mm)