

Chapter**1****Service Overview**

Carefully read through this chapter for a look at various components of the UN62 and necessary cautions and tools before performing any service and repairs.

To provide the best service and support for the UN62, we have provided the below information for technicians from distributors and resellers to perform the complete the UN62 disassembly and assembly. But before performing the procedures, please be sure to read through the overview in this chapter for component overview, cautions and tools to avoid any unwarranted damages to the hardware.

The following chapter includes:

- UN62 Overview
- Batt-Li Module
- Memory Module
- WLAN Module
- Daughter BD Module
- SSD Module
- Switch BD Module
- Main Board
- Thermal Module
- Service Overview

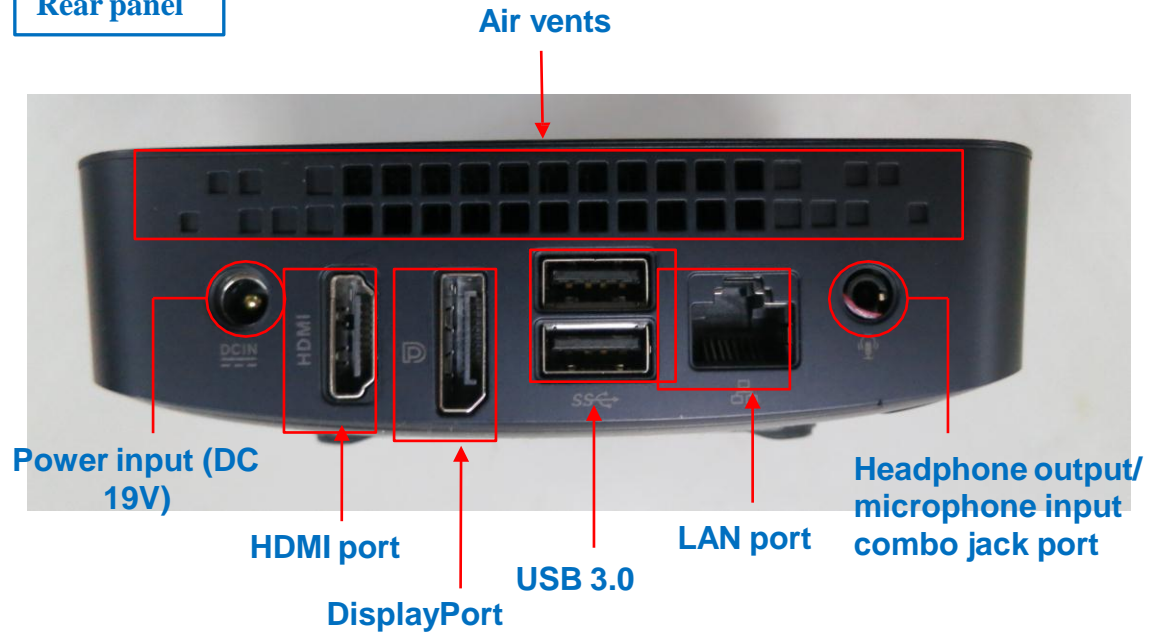
OVERVIEW

UN62 Overview

The illustrations below show the UN62 overview from front view, left side view, and rear side view. Most of the parts will be discussed in this manual.

Front view**Left View**

Rear panel



COMPONENTS

Components

The illustrations below show the components of the UN62 .

Batt-Li Module

The illustration below shows the Batt-Li Module (lithium battery).



**MEMORY
MODULE**

Memory Module

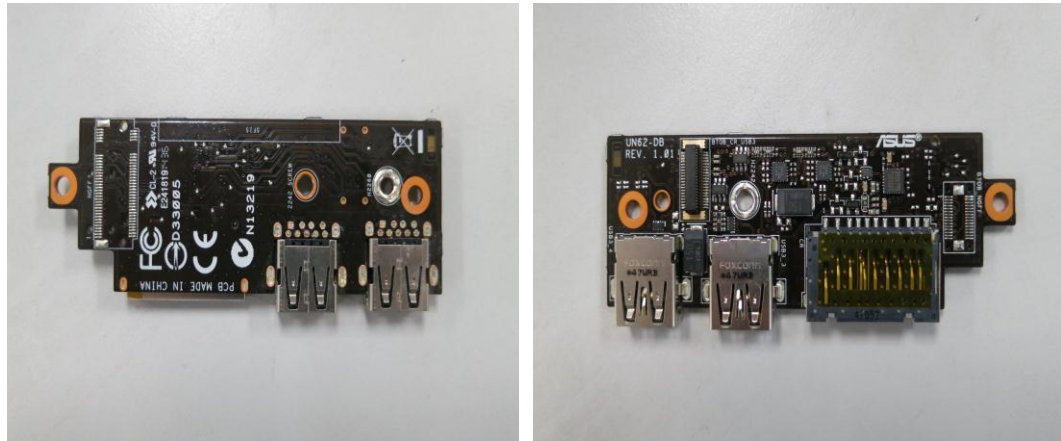
The illustration below shows the Memory Module.



DAUGHTER BD MODULE

Daughter BD Module

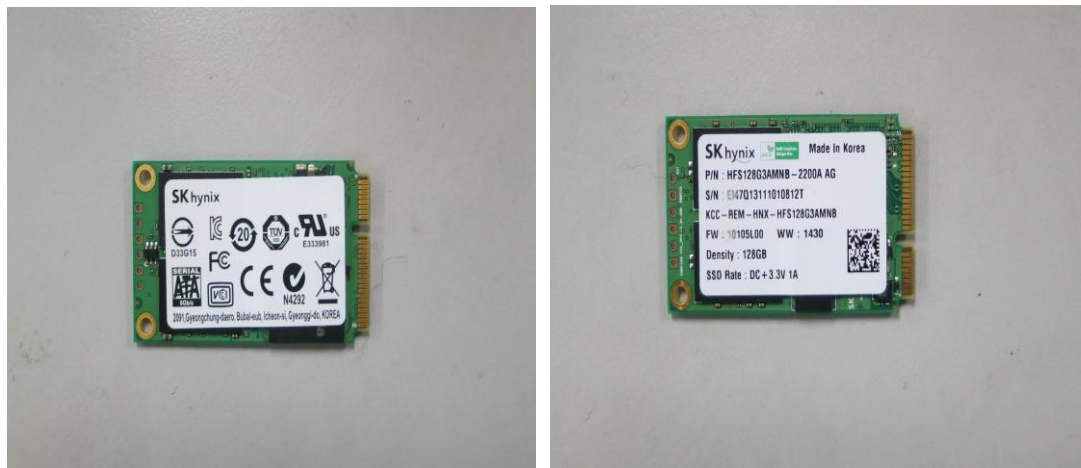
The illustration below shows the Daughter BD Module.



SSD MODULE

SSD Module

The illustration below shows the SSD Module.



WLAN MODULE

WLAN Module

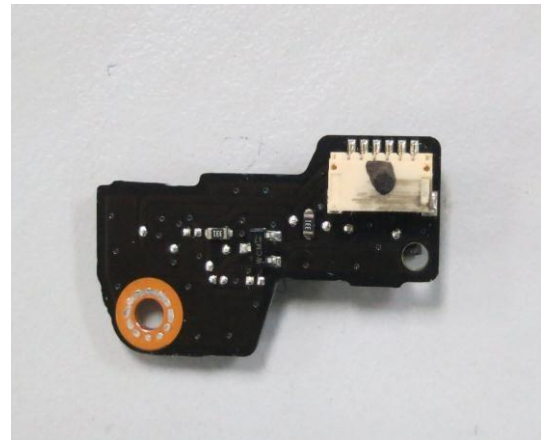
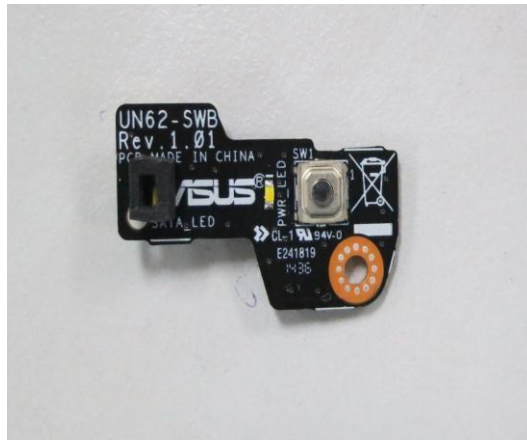
The illustration below shows WLAN Module.



SWITCH BD MODULE

Switch BD Module

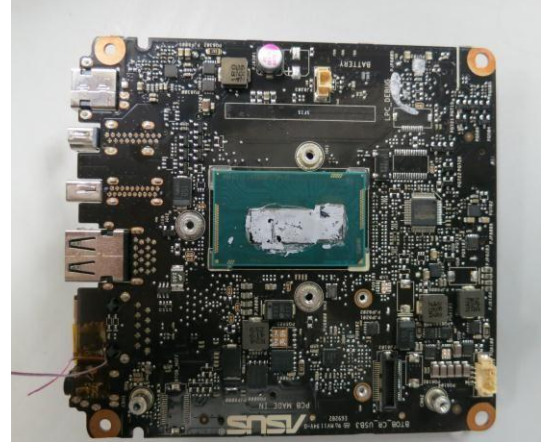
The illustration below shows Switch BD Module.



MAIN BOARD

Main Board

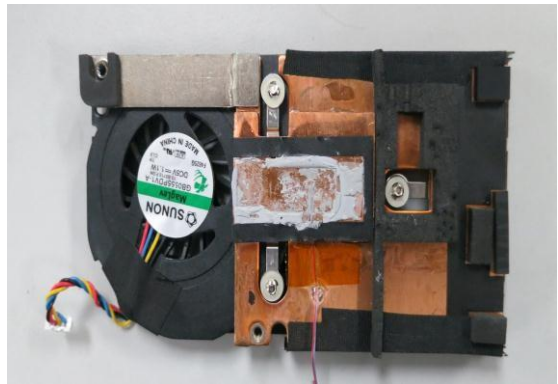
The illustration below shows the Main Board.



THERMAL MODULE

Thermal Module

The illustration below shows the Thermal Module.



Service Overview

Please pay special attention to the cautions below to prevent any damages to the UN62 and also please be sure to select the appropriate tools described in this section to perform any services desired.

Precautions

1. Before you perform any service and or repair on UN62, please follow the steps below first.
2. Be sure that UN62 is powered down.
3. Disconnect the AC plug from the UN62.
4. Remove all rings, watches and any other metal objects from your hands.



5. Always wear a ground strap on your hand to protect the UN62 from static discharge.
6. Please refer to "ANSI ESD S20.20" about ESD protection measure.
7. Put the disassembled up cover and bottom cover in the PE BAG to avoid any damages.
8. Environment temperature is 20-30 °C and humidity is 40% - 70%.


Appropriate Tools

The illustrations below show the appropriate tools that should be used for the service and repair.

CROSS SCREW- DRIVER

Cross Screwdriver

Please according to different screw specification choose different screwdriver and head. Below photos are for reference only.

1. Use a cross screwdriver to fasten/remove screws. 



PLASTIC BLADE

Plastic Blade (PN: 20LT0-0005O000)

Use plastic blade pry open the cover and other solid things.



TWEEZERS

Tweezers

Use a pair of tweezers to remove/insert flexible cables.



Chapter**2**

Disassembly (Assembly) Procedure

Please follow the information provided in this section to perform the complete disassembly procedure of UN62. Be sure to use proper tools described before.

A **SUS UN62** consists of various modules. This chapter describes the procedure for UN62 disassembly and assembly. Assembly document please look up from the last page. In addition, in between procedures, the detailed disassembly procedure of individual modules will be provided for your service needs.

The disassembly procedure consists of the following steps:

- Bottom Cover Module
- Memory Module
- SSD Module
- WLAN Module
- Main Board Module
- Thermal Module
- Daughter Board Module
- Batt-Li Module
- Switch Board Module

Assembly Procedure

Please read the document from end to beginning, and pay special attention to the assembly notice in the yellow frame.

**BOTTOM
COVER
MODULE**

Bottom Cover Module

The illustration below shows how to remove the Bottom Cover module from UN62.

Remove the Bottom Cover Module

1. Remove 4 rubbers on the bottom case.



Assembly Notice: When put the rubbers back please make sure put the right rubber in the right place.

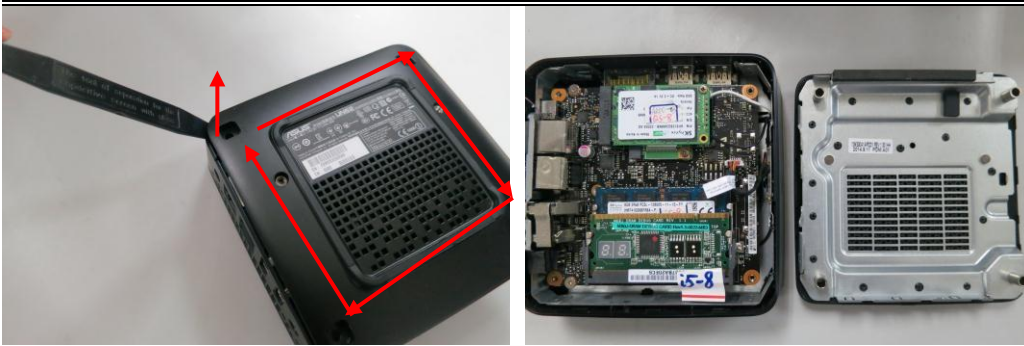


2. Remove 4 screws (M2.5*5L) and use plastic blade to pry open the cover in a specific order.





Disassembly (Assembly) Procedure



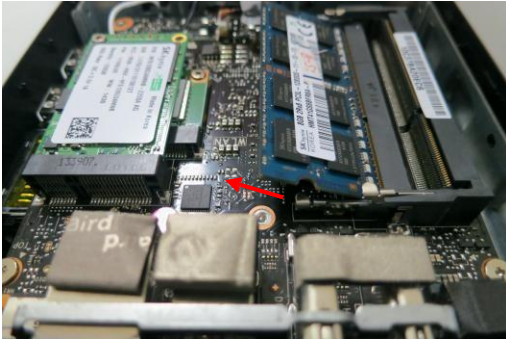
MEMORY
MODULE

Memory Module

The illustrations below show how to disassemble and remove the Memory Module from UN62.

Remove the Memory Module

1. Push two latches here to pop the memory module up at 45° angles, and then pull out the module at that angle.



SSD

MODULE

SSD Module

The illustration shows how to remove the SSD Module from UN62.

Remove SSD Module

Remove 1 screw (M2*2.5L) on SSD module, SSD module is up at 45° angles, and then pull out the module at that angle.



WLAN MODULE

WLAN Module

The illustrations below show how to remove the WLAN Module from UN62.

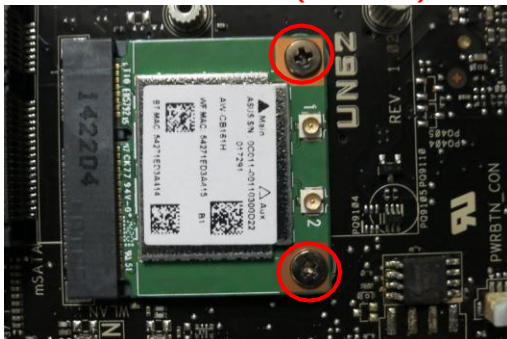
Remove WLAN Module

1. Disconnect the antennas



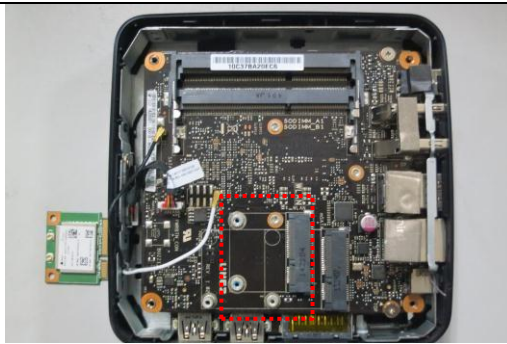
Assembly Notice: Black antenna is connected to the main port showing as ▲
White antenna is connected to the aux port showing as ○.

2. Remove 2 screws (M2*2.5L) on the WLAN board and take it away.





Disassembly (Assembly) Procedure

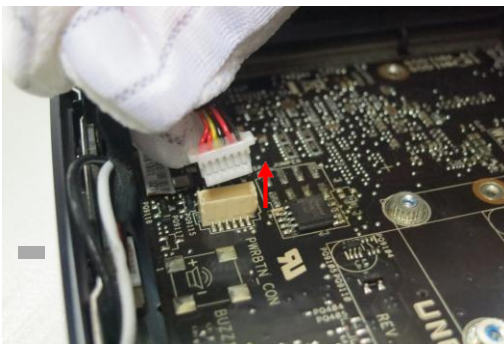
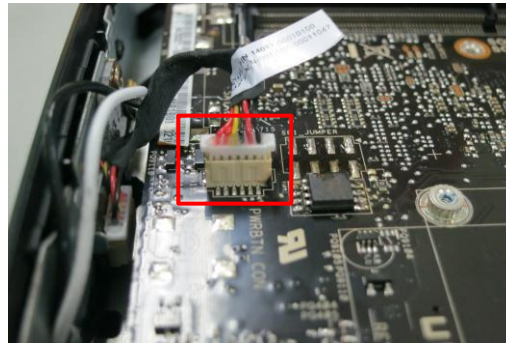


MAIN BOARD
MODULE
Main Board Module

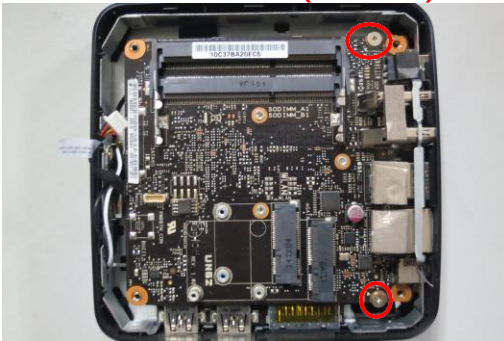
The illustrations below show how to remove the Main Board Module (including Thermal Module, Daughter Board Module and Batt-Li Module) from UN62.

Remove Main Board Module

1. Disconnect the power cable.



2. Remove 2 screws (M2.5*5L) from the two sides.



3. Remove the mainboard.



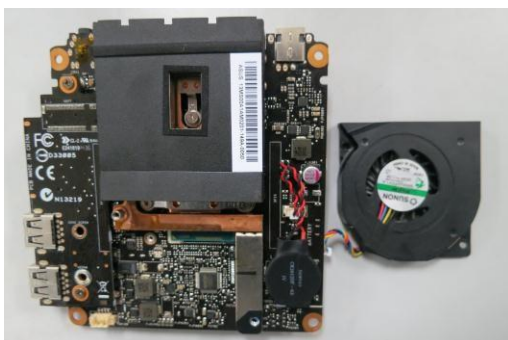
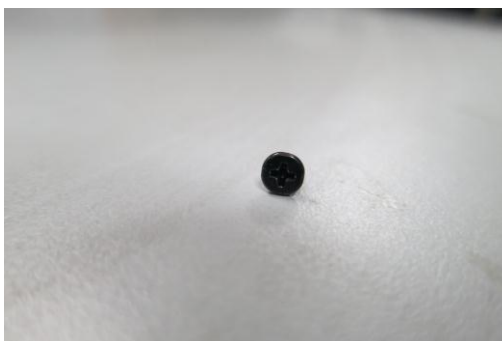
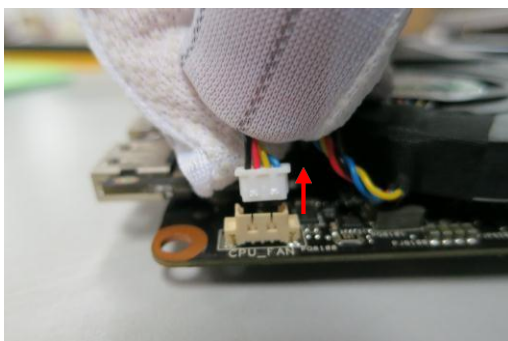
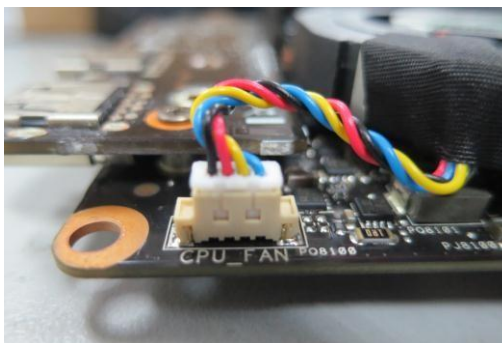
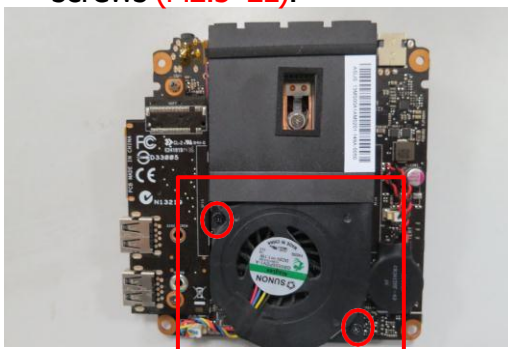
Main Board Module is consisting of Thermal Module, Daughter Board Module and Batt-Li Module.

**THERMAL
MODULE**
Thermal Module

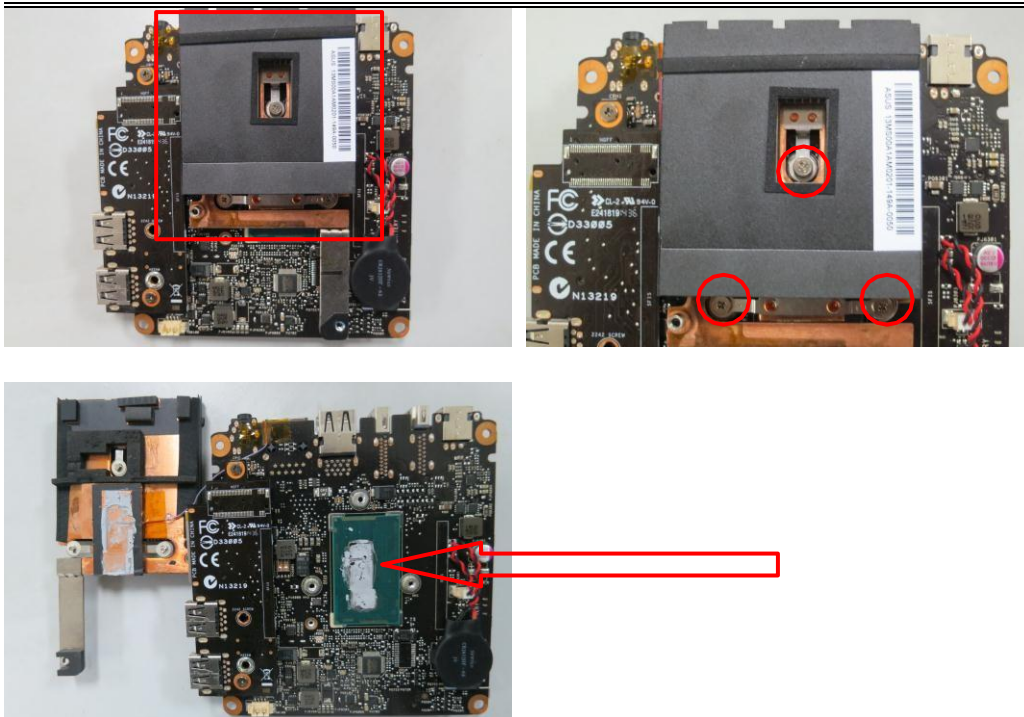
The illustrations below show how to remove the thermal module from UN62.

Removing the Thermal Module

1. Turn reversal the mainboard, disconnect the FAN cable and remove 2 screws (M2.5*2L).



2. Remove 3 screws.



Assembly Notice: When put Thermal Module back, please make sure there is enough thermal grease on CPU.

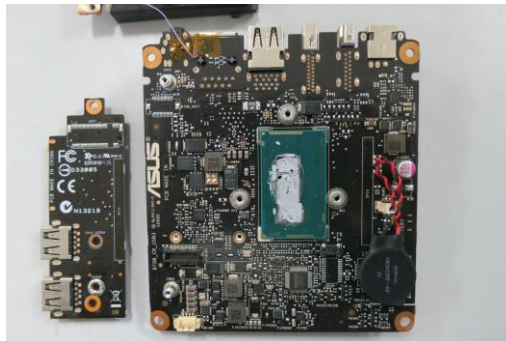
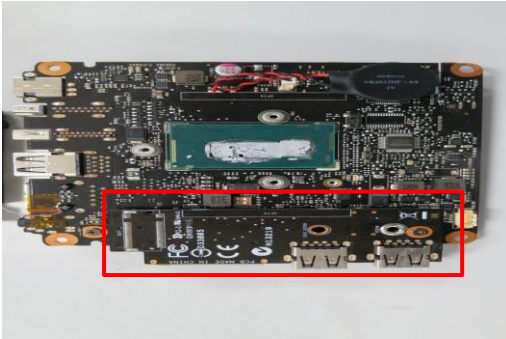
DAUGHTER
BOARD
MODULE

Daughter Board Module

The illustrations below show how to remove the Daughter Board Module from UN62.

Remove Daughter Board Module

Remove 2 screws (M2.5*4L).



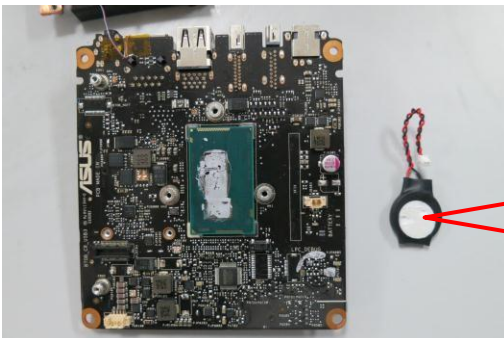
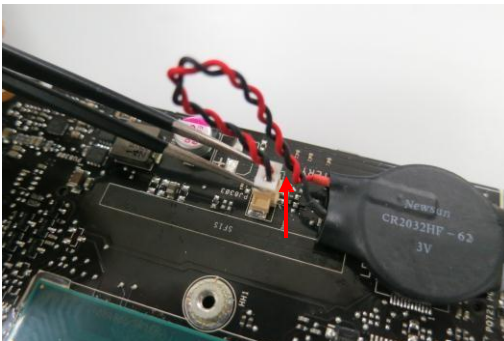
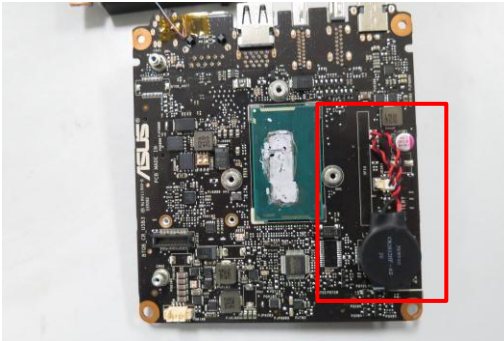
BATT-LI MODULE

Batt-Li Module

The illustrations below show how to remove the Batt-Li Module (Lithium Battery) from UN62.

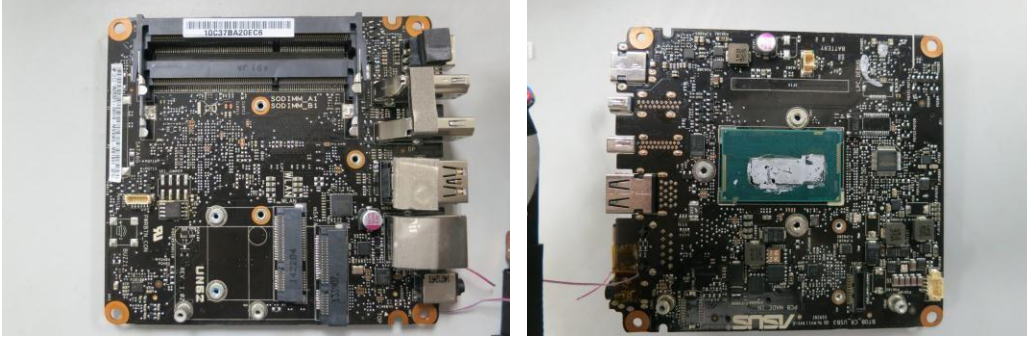
Remove Batt-Li Module

Disconnect the cable.



Assembly Notice: If double-coating tape on the back of battery is not working, please put some more on it.

When all above actions are finished, there is the main board left:



SWITCH
BOARD
MODULE

Switch Board Module

The illustrations below show how to remove the Switch Board Module from UN62.

Remove Switch Board Module

Remove 1 screw (M2*2.5L).

