

AIRPLUS

AIRPLUS
DEHUMIDIFIER
USER MANUAL



WARNINGS

This appliance can be used by children aged from 8 years and above and persons with reduced physical, sensory or mental capabilities or lack of experience and knowledge if they have been given supervision or instruction concerning use of the appliance in a safe way and understand the hazards involved. Children shall not play with the appliance. Cleaning and user maintenance shall not be made by children without supervision.

CONTENTS

01 Product Details

Operation 03

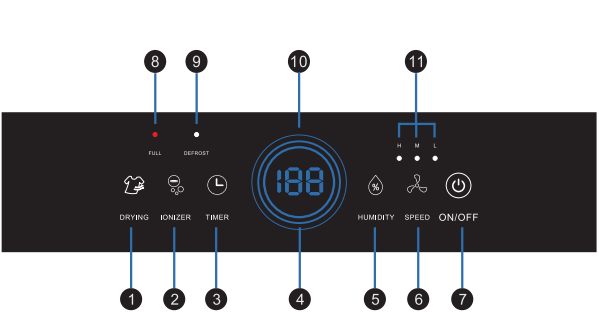
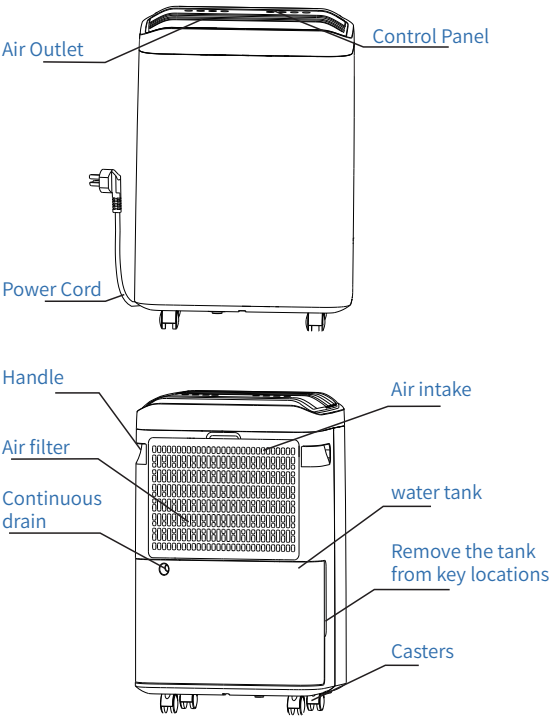
- Control Panel

05 Care & Cleaning

- Cleaning
- Storage

Troubleshooting 08

Product Details

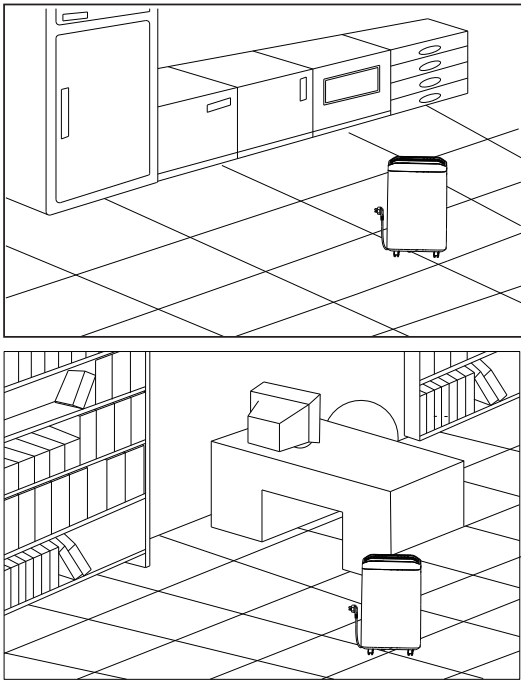


- ① Dry button
- ② Negative ion button
- ③ Timer keys
- ④ Humidity status indicator
- ⑤ Humidity button
- ⑥ Wind speed button
- ⑦ Standby button
- ⑧ Water full indicator
- ⑨ Defrost indicator
- ⑩ Digital display
- ⑪ Wind speed indicator

Applicable Place

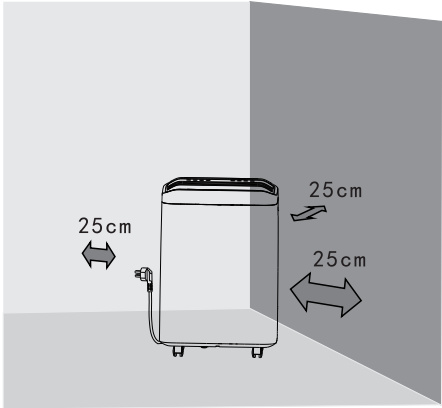
Wide range of applicable places:

basement, storage room, library, archives, living room, bedroom, cloakroom, toilet, etc

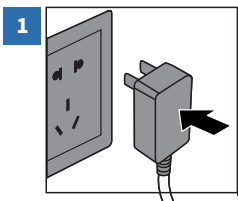


Position it correctly:

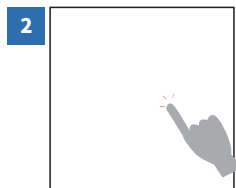
In order to better play the performance of the dehumidifier, the main engine air inlet is used during use. Keep a certain distance from shelters such as walls.



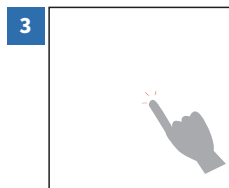
Usage Method



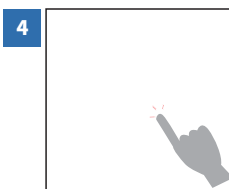
Plug in the power supply, prompt the sound, The machine is powered on



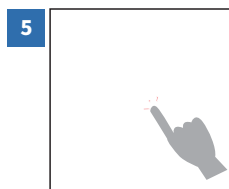
Press the standby button, the corresponding indicator light is on, Displays the system default operating mode. again, Press the switch key once to shut down



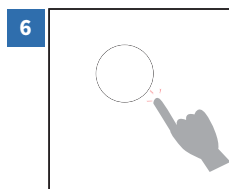
Press the wind speed selection key to switch, There are three modes of low wind, medium stroke, and high wind ring



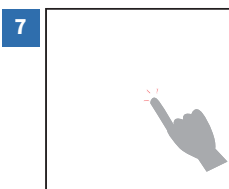
In the standard mode state, press Wet, Degree key, humidity can be RH40%-80% and Cyclic selection between CO (continuous dehumidification).



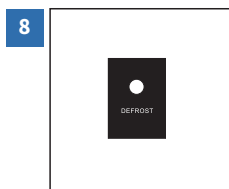
Press the dry button, the dry clothes icon lights up, Dry mode start; Press down on the dry suit again, The dry button goes off and returns to standard mode;



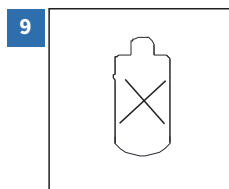
In the shutdown state, press the timing key to make an appointment for 0-24 hours and start the machine at a fixed time; Under the power-on state, press the timing key to conduct 0-24 hours of timed shutdown



Press the negative ion bond to start the negative ion work Yes, the negative ion indicator is on



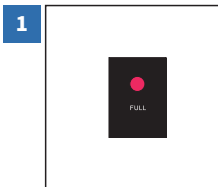
Intelligent detection of dehumidification system temperature, turn on Defrost mode to ensure low temperature environment Maintain efficient dehumidification performance



Compressor power failure protection

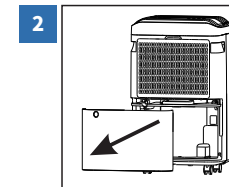
Usage Method

Pour water



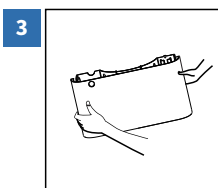
Full of water

When the water tank is full of water, the machine will automatically stop dehumidification, and the full water indicator will light up to indicate that water needs to be poured



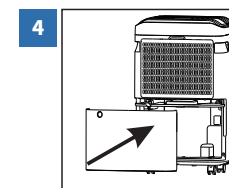
Remove the water tank

Grasp the handles on both sides of the water tank and pull outward to take out the water tank



Pour water

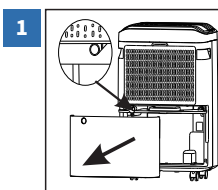
Grasp the sides of the tank and pour the water clean



Put back in the tank

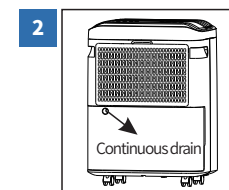
Put the tank back and get back to work, If the water tank is not placed in place, the machine The device does not work, and the full water indicator is on

Continuous drainage



Continuous drain

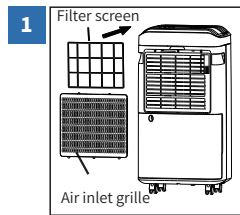
Remove the tank and see the continuous drain location



Continuous drain pipe

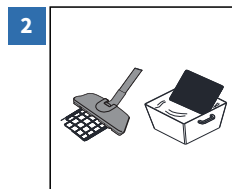
Insert the water pipe into the continuous drain, put back into the tank, pipe mouth facing to ensure that the condensate is discharged smoothly

Clean the strainer



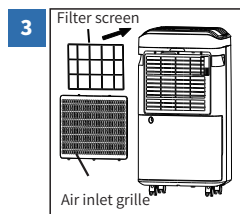
Remove the filter frame

First remove the inlet grille, Then remove the filter frame



Dust cleaning

First use the dust collector to dust the air filter, and dry it after cleaning



Install the filter frame

Install the filter screen onto the air inlet grille, and then install the air inlet grille onto the machine

BASIC PARAMETER INFORMATION

Product Model	AP25-2003EE
Power Supply	115~60Hz
Rated Power/current (DB80°F RH60%)	305W/3.11A
Rated Dehumidification Capacity (DB80°F RH60%)	0.42KG/H
Daily Dehumidification (DB86°F RH80%)	25L/D
Operating Ambient Temperature	41-86°F
Compressor	Reciprocating
Refrigerants	R134a/5.82oz
Water Tank Volume	4.8L
Product Weight	31.75lb
Form Factor	38×26.8×52cm
Execution Standards	GB4706.1-2005 GB4706.32-2012 GB/T19411-2003
Remark	If the technical parameters are subject to change, the nameplate shall prevail

Matters Needing Attention

- ◆ Keep the machine in an upright position, ensure that there is at least 25cm space distance around the machine;
- ◆ After transportation or tilting, the machine needs to stand for 2 hours before it can be connected to the power supply;
- ◆ The air inlet and outlet shall not be blocked by other objects, so as not to affect the performance of the product;
- ◆ Before moving the machine, please turn off the machine and cut off the power, and then empty the water in the tank before moving;
- ◆ It is strictly forbidden to use bad or flammable detergents to clean the machine;
- ◆ When the machine fails, please shut down and cut off the power first;
- ◆ Must use a three-core socket power supply with ground wire;
- ◆ If the power cord is damaged, in order to avoid danger, it must be replaced by professionals from the manufacturer, its maintenance department or similar departments;
- ◆ If the machine is not used for a long time, please turn off the power and unplug the power cord, drain the water in the water tank and dry the water tank, clean the air filter, and store it in a cool and dry place;
- ◆ After 3-6 months of use of the air filter, it is recommended to clean it.

Warm Tips

It is necessary to prevent the drainage pipeline from freezing in cold environment

Common troubleshooting

Symptom	Analysis of possible causes	Processing method
The machine does not work	1. The machine is placed uneven or the ground is uneven to introduce vibration	1.Check the power supply of the socket to ensure that there is power
	2. The water full indicator light is on (the water tank is full or the water tank is not placed in place)	2. Drain the water in the tank or replace the tank to ensure that it is in place
	3. The humidity of the room is lower than the humidity setting value of the machine	3. Reset the humidity setting value of the machine to ensure that it is lower than the humidity of the room
Noisy	1. The air filter is too dirty to cause poor air inlet or foreign objects to block the air outlet	1.Clean the air filter or clean up foreign matter at the air outlet
	2. The doors and windows are not closed	2.Close the doors and windows
	3. The room temperature is lower than 5°C or the room humidity is low	3. This is a normal phenomenon
The wind wheel does not rotate or the air output is small	1.Resonance caused by uneven machine placement or uneven ground	1.Place the machine on the horizontal ground
	2.The air filter is blocked	2. Clean the air filter
	3. Compressor starting period	3. The compressor will disappear by itself in a few minutes after starting the work
The machine does not dehumidify or has poor dehumidification effect	1.The wind wheel is stuck	1.Reassemble the wind wheel or remove foreign objects
	2.The air filter is blocked	2.Clean the air filter