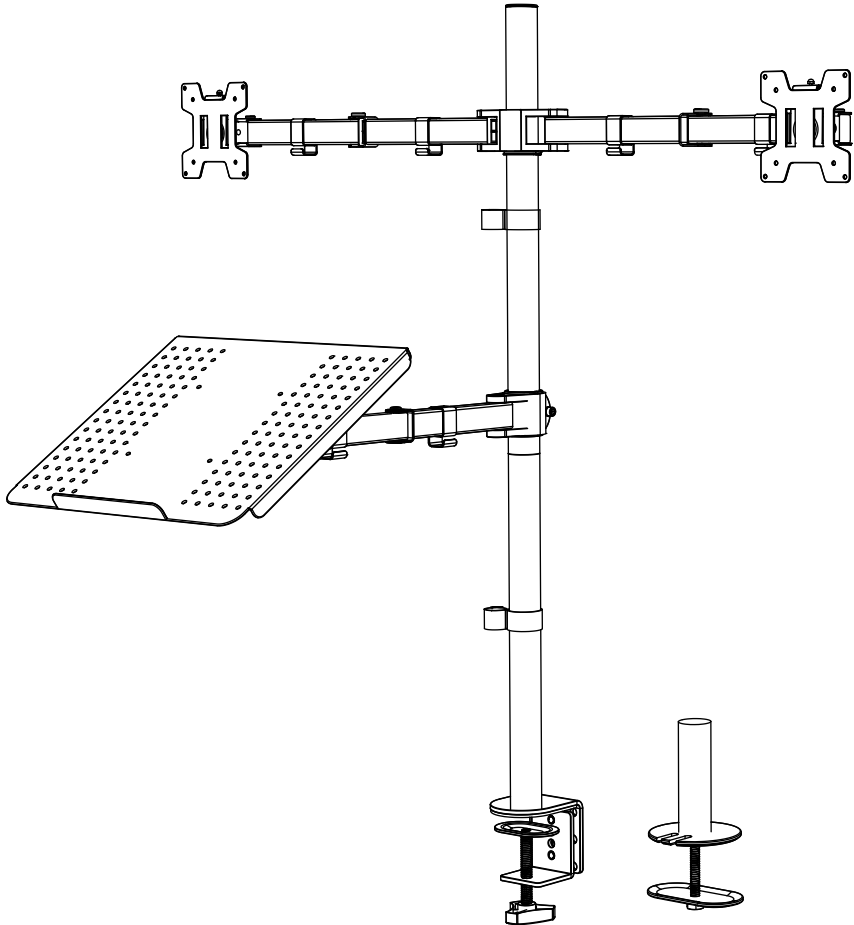




Dual Desk Mount with Laptop Tray



M002XLLP



75x75/100x100



support@walelectric.com

WARNING!

If you do not understand these directions, or if you have any doubts about the safety of the installation, please call a qualified technician. Check carefully to make sure there are no missing or defective parts. Improper installation may cause damage or serious injury. Do not use this product for any purpose that is not explicitly specified in this manual. Do not exceed weight capacity. We cannot be liable for damage or injury caused by improper mounting, incorrect assembly or inappropriate use.



TIPOVER WARNING

**SERIOUS OR FATAL CRUSHING INJURIES CAN OCCUR FROM TIPOVER.
TO HELP PREVENT TIPOVER:**

- NEVER ALLOW CHILDREN TO CLIMB, STAND, HANG, OR PLAY ON ANY PART OF MONITOR OR STAND.
- USE TIPOVER RESTRAINT OR ANCHOR STAND TO WALL.

USE OF TIPOVER RESTRAINTS MAY ONLY REDUCE, BUT NOT ELIMINATE RISK OF TIP OVER.

SMALL PARTS- NOT FOR CHILDREN UNDER 3 YEARS. ADULT SUPERVISION IS REQUIRED.

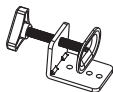
Supplied Parts List



Lower Pole
a1 (x1)



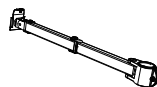
Upper Pole
a2 (x1)



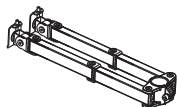
C-Clamp
b (x1)



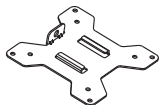
C-Clamp Brace
c (x1)



Swivel Arm
d1 (x1)



Swivel Arm
d2 (x1)



VESA Plate
e (x3)



M5x14 Bolt
f (x3)



M8x12 Bolt
g (x2)



Nut
h (x3)



M10 Bolt
i (x1)



Support Plate
j (x1)



M10 Washer
k (x1)



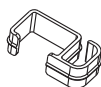
Spring Washer
l (x1)



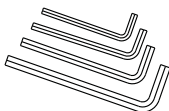
Grommet Base Plate
m (x1)



Wire Clip
n1 (x2)



Wire Clip
n2 (x6)



Allen Key
o (x1)



Wrench
p (x1)



M4x12 Bolt
q (x12)



M4x30 Bolt
r (x12)



M4 Spacer
s (x12)



Laptop Tray
t (x1)



M4x10 Bolt
u (x4)



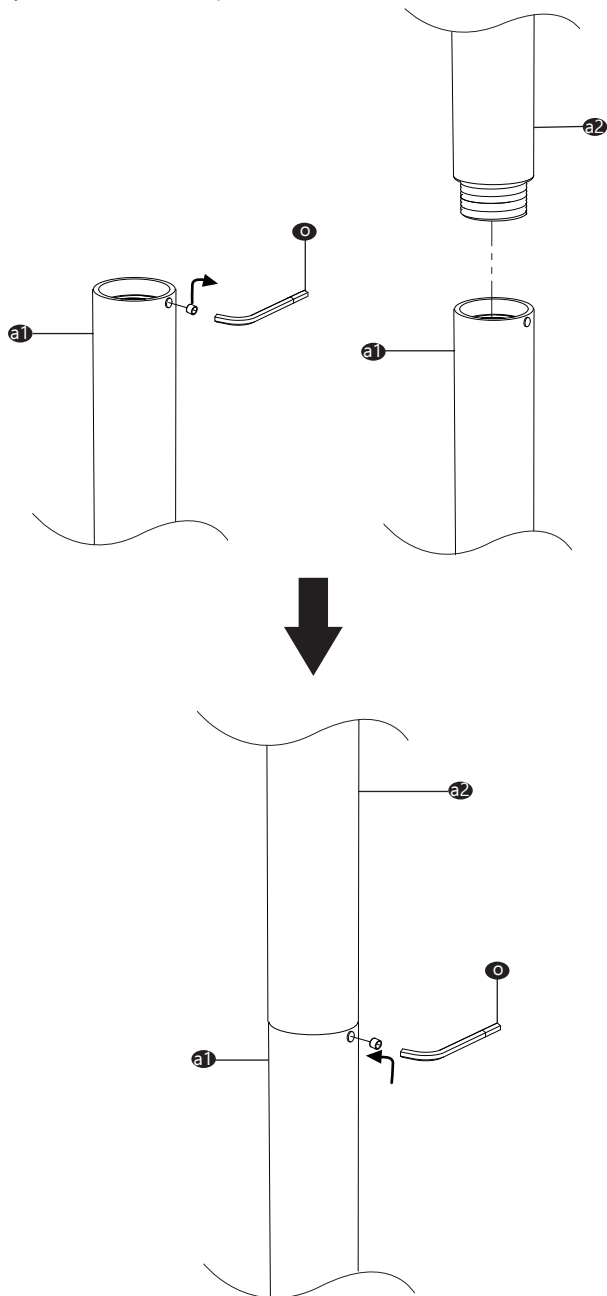
M4 Nut
v (x4)



Anti-skid Pad
w (x4)

Step 1 > Pre-Assembly

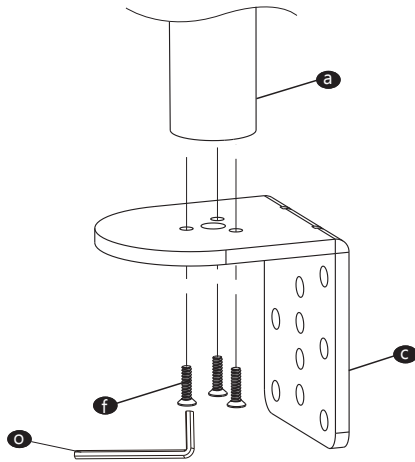
Loosen the screw on the Lower Pole **a1** with Allen key 2mm **o**. Connect Lower Pole **a1** to Upper Pole **a2** and tighten the screw with Allen key 2mm **o** to fix the two poles.



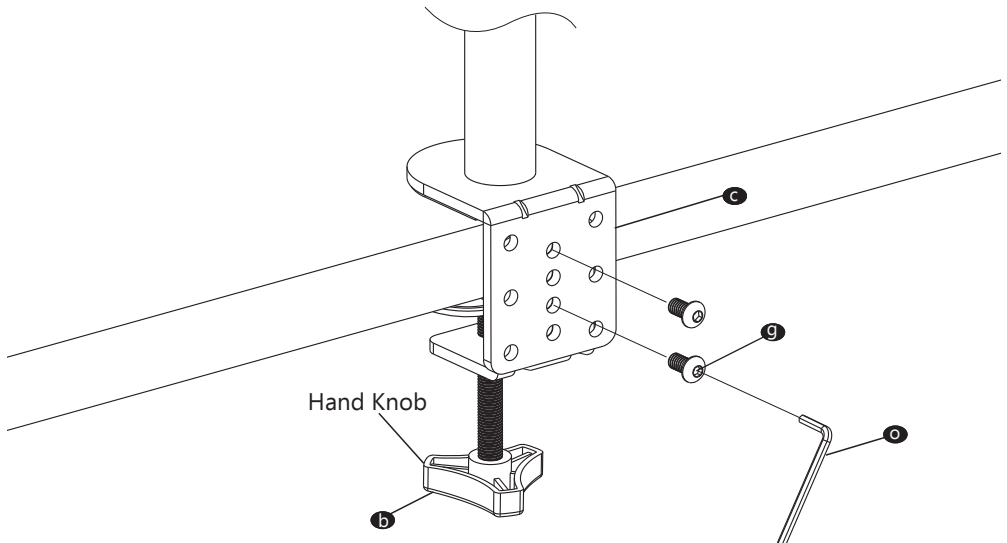
Step 2

Option A : Clamp Installation

1. Connect Pole **a** and C-Clamp Brace **c** from the bottom using M5x14 Bolt **f** and tighten with Allen Key 3mm **o**.

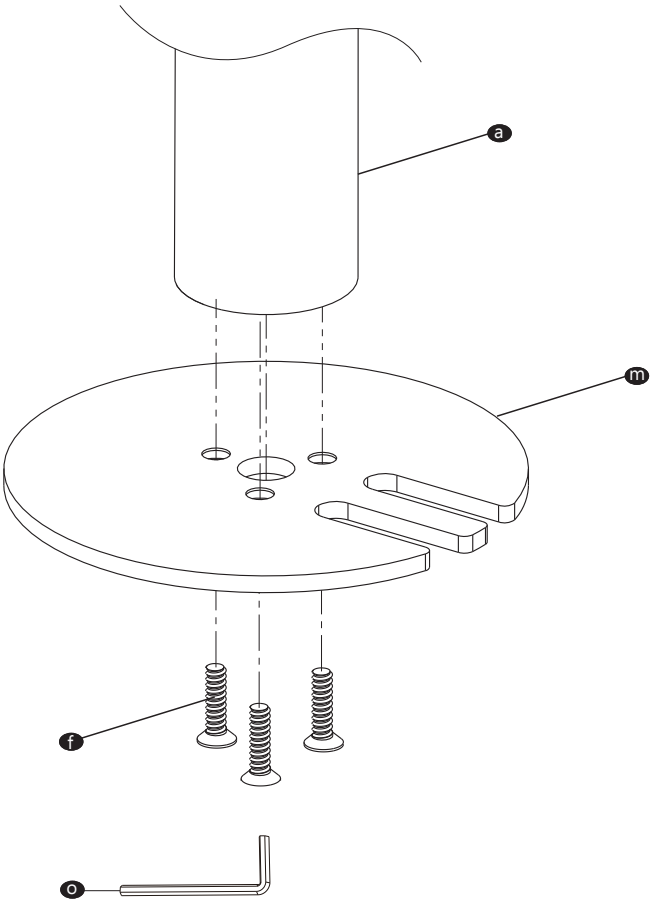


2. Select the preferred height according to your desk thickness. Connect C-Clamp **b** to C-Clamp Brace **c** using M8x12 Bolt **g** and tighten with Allen Key 5mm **o**. Rotate the hand knob to fasten for stability.



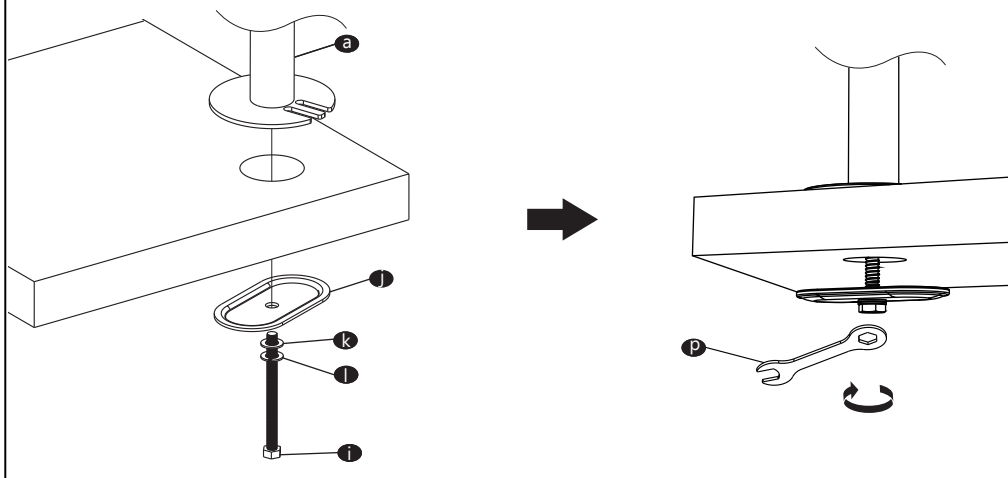
Option B : Grommet Base Installation

1. Place Pole **a** onto Grommet Base Plate **m** . Connect them from the bottom using M5x14 Bolt **f** and tighten with Allen Key 3mm **o** .



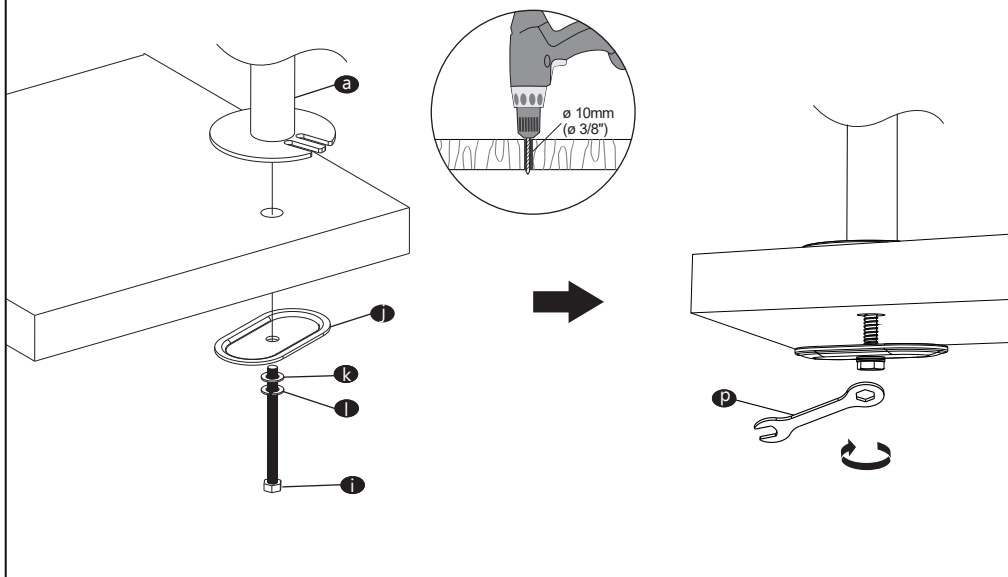
2a. Existing Grommet Hole Installation

If the existing grommet hole comes with a plastic protector, remove it to ensure a flat surface before installing the desk mount. Position the Pole **a** on the mounting surface and secure using the Support Plate **j**, M10 Washer **k**, Spring Washer **l**, and M10 Bolt **i**. Fasten the Bolt using the provided Wrench **p**.



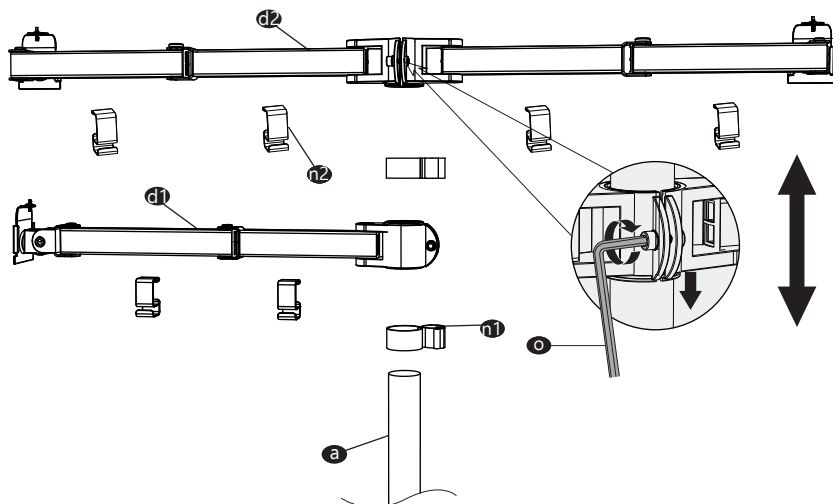
2b. Self-drilled Grommet Hole Installation

Mark the position of the hole on your mounting surface. Drill a 3/8"(10mm) diameter hole at the marked position through the mounting surface. Position the Pole **a** on the mounting surface and secure using the Support Plate **j**, M10 Washer **k**, Spring Washer **l**, and M10 Bolt **i**. Fasten the Bolt using the provided Wrench **p**.



Step 3

Put the Wire Clip **n1** and Swivel Arm **d** through the Pole **a**, adjust the preferred height and tighten using Allen Key 6mm **o**. Attach the Wire Clips **n2** to the Swivel Arm **d1** and **d2**.

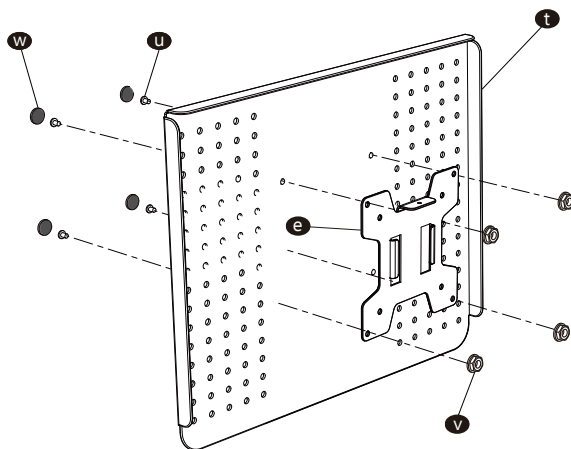


Step 4

A: Laptop Tray Installation

Using M4 X 10 Bolt **u** and M4 Nut **v** to attach the VESA Plate **e** to the laptop tray **t** and tighten with a screwdriver.

Put the Anti-skid Pad **w** on the designated position on the tray. (Screwdriver not included)



B: Monitor Mount Installation

Select bolts and spacers (if needed) according to your TV/Monitor. Attach the VESA Plate to the Monitor and tighten with a screwdriver. (Screwdriver not included)

Step 4.1

Select Monitor Screws

Only one screw size fits your Monitor

M4x12

M4x30

Hand thread screws into the threaded inserts on the back of your Monitor to determine which screw (M4x12 or M4x30) to use.

Step 4.2

Select Spacers (if needed)

NOT NEEDED

NEEDED FOR

Inset Holes

Round Monitor

Step 4.3a

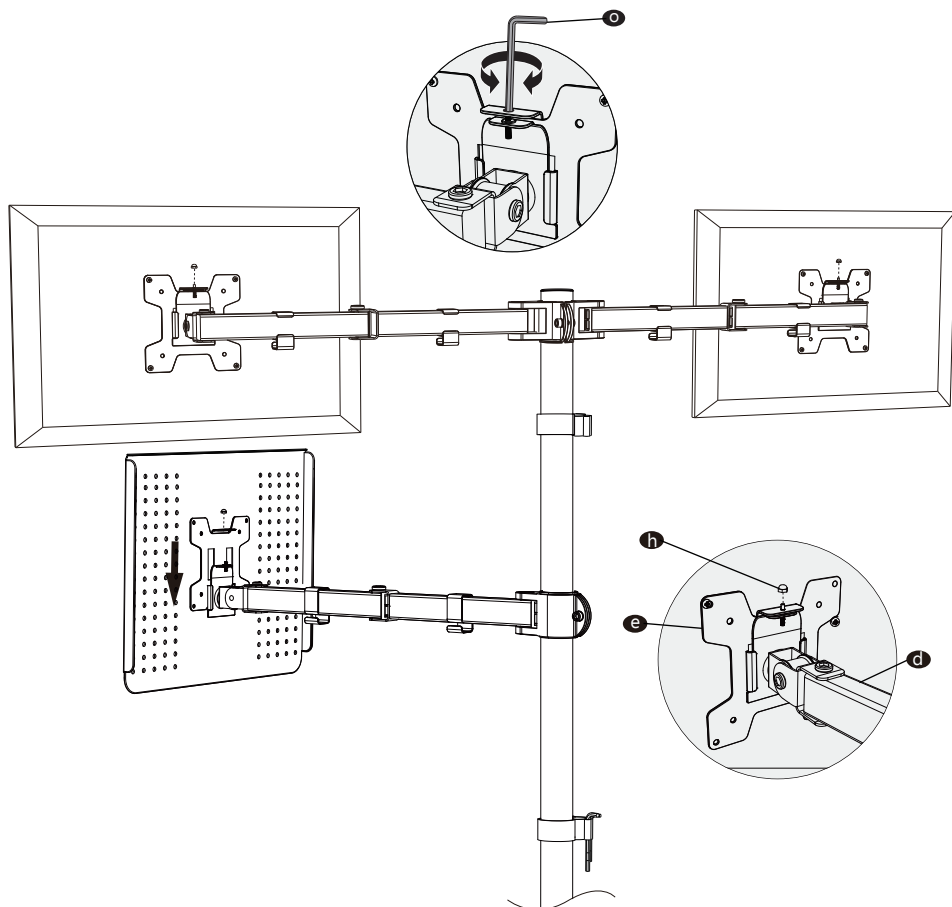
Flat Back Monitor

Step 4.3b

Curved or Recessed Back Monitor

Step 5

Put the assembled TV/Monitor onto the Swivel Arm **d** and tighten the VESA Plate **e** with Nut **h** for stability.
If one monitor is lower, remove the Nut **h** and turn the bolt counter-clockwise using Allen key 3mm **o** to raise the monitor.
Tighten the VESA Plate **e** with Nut **h** for stability after the adjustment.

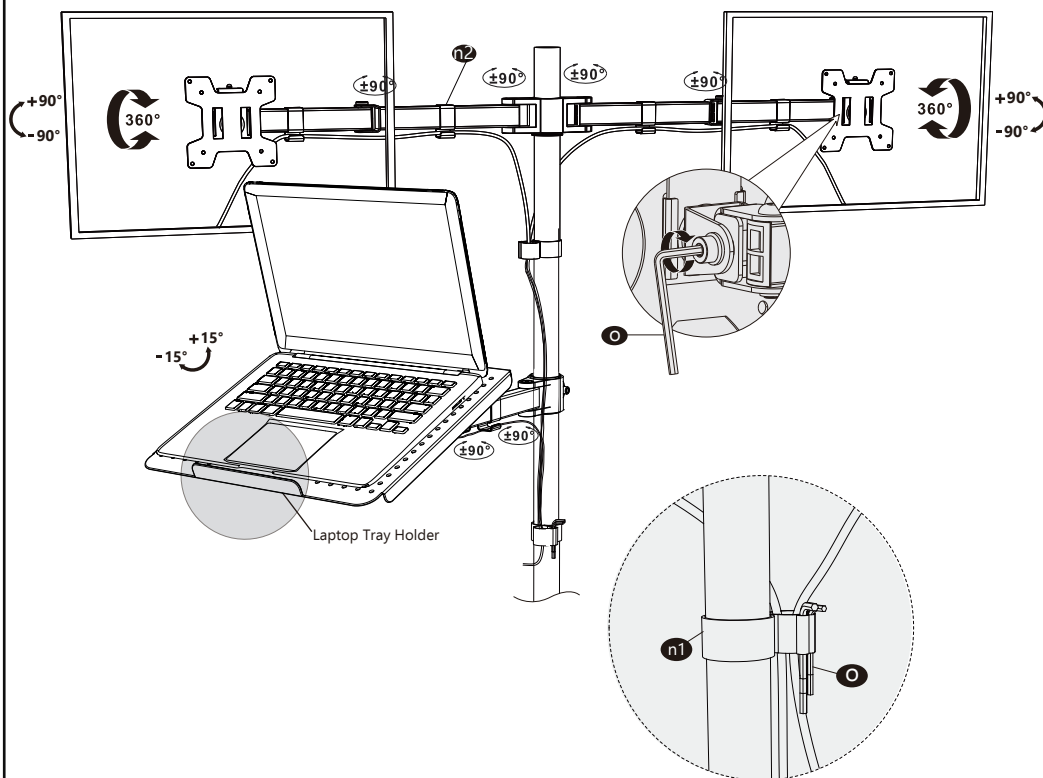


Step 6

Guide the cable through the Wire Clips (**n1**, **n2**) and store the Allen Keys **O** in the Wire Clip **n1**.

Adjust the tilt angle using Allen Key 5mm **O**.

Manually swivel, tilt, and rotate the monitor for the best viewing angle.





Thank you for choosing us!

We support the technology that brings your home to life.
We offer high quality products, professional customer service,
and extensive technical support.

If you have any questions, please contact us.

☎ 1-844-SATTLER (18447288537)

✉ support@wallelectric.com