



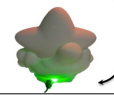
User Manual

Version 1.0

Glow Star Device Operation:

Step 1: Charge the unit.

- On the back of the device is the charging port.
- Use the supplied cable with any USB charging block. Plug the micro-USB plug into the port on the back of the device.
- The light will turn green when fully charged



Step 2: Turn on the unit.

- Press the power button until the unit lights up (approx. 2 seconds).



Step 3: Install iPhone or Android application

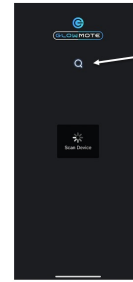
- Once the application is installed and the device is powered on the application will automatically connect to the unit.



Note: Only one smart phone device can control the Glow Star at a time. The second smart phone will not be able to connect and will not see the Glow Star in the discovery list.

Smart Phone Application Operation`

When the application starts the first screen shows it's scanning for available devices. This uses **BlueTooth** so you will need to be within approx. 30 ft of the device.

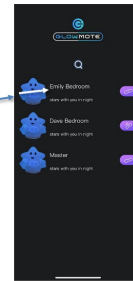


Press the eye glass to **SCAN** for new devices.

If a device is found it will automatically take you to the device control screen

If no devices are within range it will "Scan Devices" and then briefly display "No Devices Found"

Once available devices are found you can touch the unit's name to rename the device. This will help to organize multiple units.



Touch the device you want to connect, which will bring you to the LED color palette.

CONNECT TO UNIT

NOTE: The unit and application use Bluetooth to communicate so you can only connect one Smart Phone to a device at a time. You will have to turn off the Glowmote Smart app on one phone to enable another to connect and control.

RENAME UNIT

Shows the start and stop times of the scene

Represents the MUSIC selected for the scene.

Scene's enable you to Create schedules to Promote quality sleeping Habits.

You can start and/or stop daily with changing colors and music depending on the day or time of your choosing.

SCENE CONTROL SCREEN

Enable/Disable a SCENE

CONFIGURE a scene. This takes to the next screen.

SCENE DETAILS SCREEN

Select your ON TIME

Select your OFF TIME

Select the DAYS of the week the scene will run.

Select the LED color For the scene.

Enable color STROBE

Enable/Disable ON TIME.

Enable/Disable OFF TIME.

LOOP your Selected music.

Enable color ROTATION

Select the MELODY or CUSTOM RECORDING

SCENE COLOR SELECTION SCREEN

Select your COLOR preference to be used when the scene is executed.

SCENE MUSIC SELECTION SCREEN

Select your MUSIC preference to be used when the scene is executed.

NOTE: Use this icon for a custom voice recording.

Safety Precautions

This device complies with part 15 of the FCC Rules. Operation is subject to the following two conditions: (1) This device may not cause harmful interference, and (2) this device must accept any interference received, including interference that may cause undesired operation.

Any Changes or modifications not expressly approved by the party responsible for compliance could void the user's authority to operate the equipment.

Note: This equipment has been tested and found to comply with the limits for a Class B digital device, pursuant to part 15 of the FCC Rules. These limits are designed to provide reasonable protection against harmful interference in a residential installation. This equipment generates uses and can radiate radio frequency energy and, if not installed and used in accordance with the instructions, may cause harmful interference to radio communications. However, there is no guarantee that interference will not occur in a particular installation. If this equipment does cause harmful interference to radio or television reception, which can be determined by turning the equipment off and on, the user is encouraged to try to correct the interference by one or more of the following measures:

- Reorient or relocate the receiving antenna.
- Increase the separation between the equipment and receiver.
- Connect the equipment into an outlet on a circuit different from that to which the receiver is connected.
- Consult the dealer or an experienced radio/TV technician for help.

*RF warning for Portable devices:

The device has been evaluated to meet general RF exposure requirement. The device can be used in portable exposure condition without restriction.

You can select pre-configured colors at the top.

Or use the color wheel to select a CUSTOM COLOR.

Change the WHITE BRIGHTNESS

Adjust the frequency of the strobe light

Power the unit On and Off

Back to HOME

Change the COLOR BRIGHTNESS

Change the WHITE WARMTH

Adjust the color ROTATION

SCENE Control

COLOR Control

MUSIC Control

DEVICE CONTROL SCREEN

Enable/Disable BLUETOOTH. Used with Streaming providers (Spotify, Pandora, etc.)

NOTE: Bluetooth will Disable when using Pre-programmed Melodies.

PAUSE/STOP and PLAY Music

VOLUME Control

Record a CUSTOM RECORDING

Pre-Programmed MELODIES and WHITE NOISE options

Stores the CUSTOM RECORDING Use this icon for scenes.

MUSIC CONTROL SCREEN

Enable/Disable BLUETOOTH. Used with Streaming providers (Spotify, Pandora, etc.)

NOTE: Bluetooth will Disable when using Pre-programmed Melodies.

PAUSE/STOP and PLAY Music