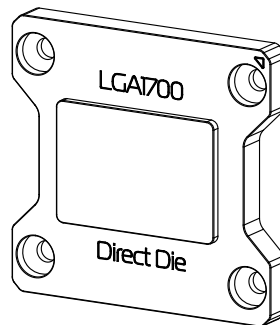
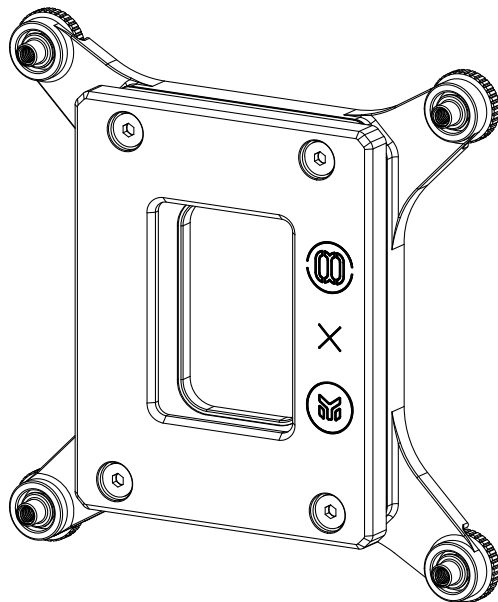


EK-Quantum Velocity² Direct Die Upgrade Kit



Please note the installation of the product is intended to be undertaken by an adequately trained and experienced person. You are installing the product at your own risk. If you are not properly trained or experienced or feel unsure about the installation procedure, please refrain from installing the product yourself and contact our tech support for assistance. We disclaim our liability for any damages to the product as well as incidental, consequential, or indirect damages incurred due to improper or inappropriate installation.

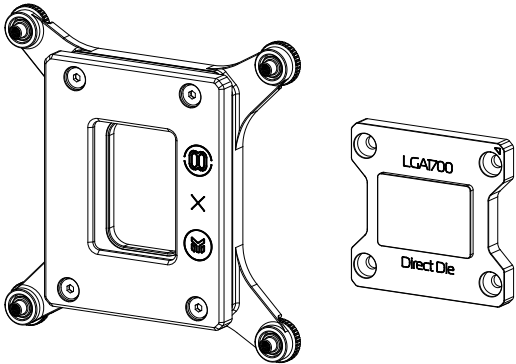
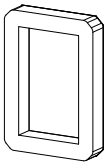



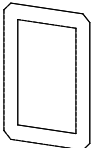
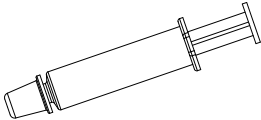
Before you start using this product, please follow these basic guidelines:

Please carefully read the manual before beginning the installation process.

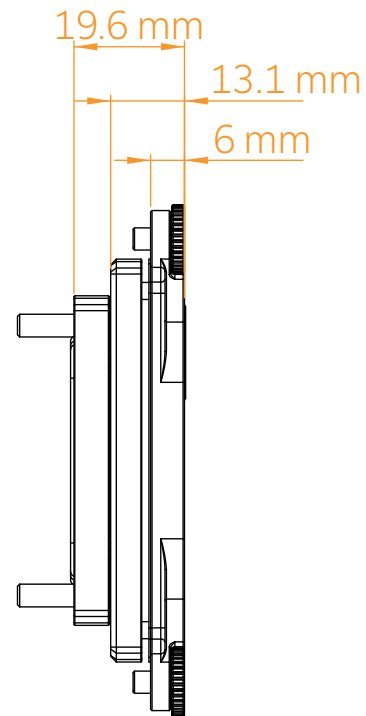
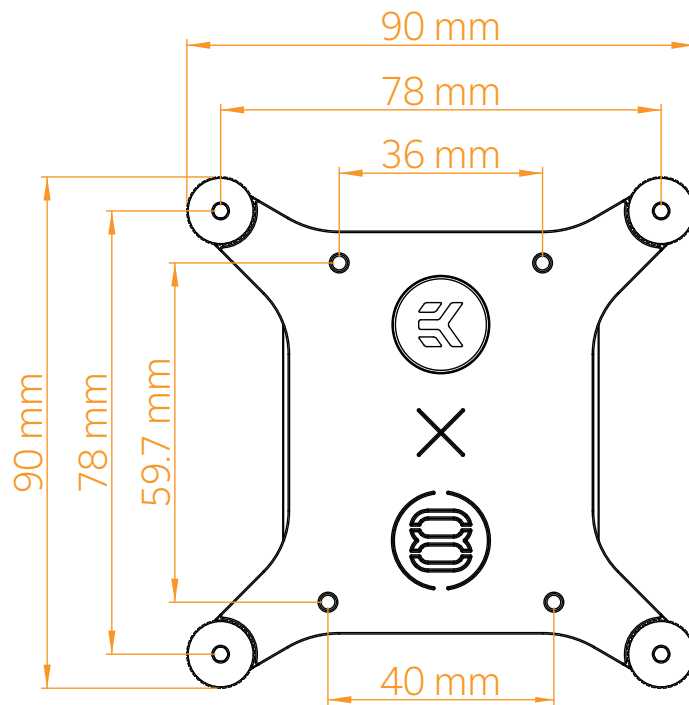
TABLE OF CONTENTS

BOX CONTENTS	4
UPGRADE KIT DIMENSIONS	5
TECHNICAL SPECIFICATIONS AND UPGRADE KIT PARTS	6
PREPARING THE WATER BLOCK	7
PREPARING THE MOTHERBOARD	8
INSTALLING THE DIE GUARD AND APPLYING THE PASTE	10
INSTALLING THE CPU WATER BLOCK	12
SUPPORT AND SERVICE	13
SOCIAL MEDIA	13

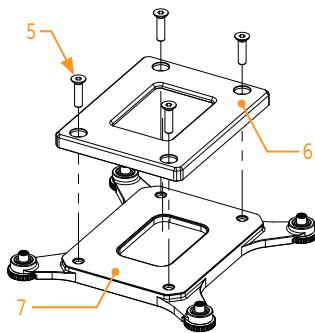
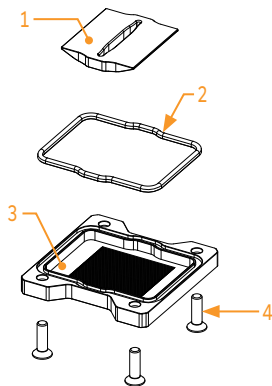
BOX CONTENTS

	 <p>Protective Foam 5mm (1 pc)</p>	 <p>Allen Key 2 mm (1 pc)</p>
	 <p>Allen Key 2.5 mm (1 pc)</p>	 <p>TX20 L-Shaped Wrench (1 pc)</p>
	 <p>Protective Sticker (1 pc)</p>	 <p>Thermal grease (1 pc)</p>

UPGRADE KIT DIMENSIONS

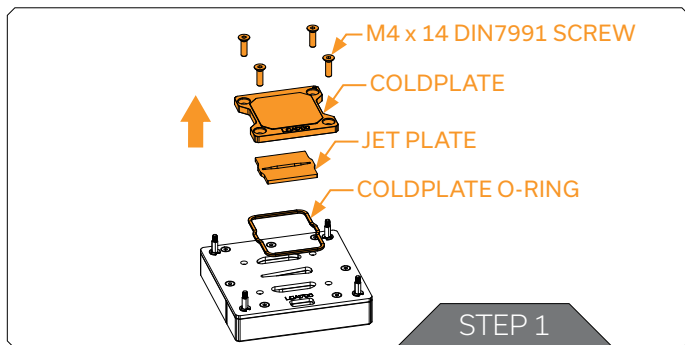


TECHNICAL SPECIFICATIONS AND UPGRADE KIT PARTS



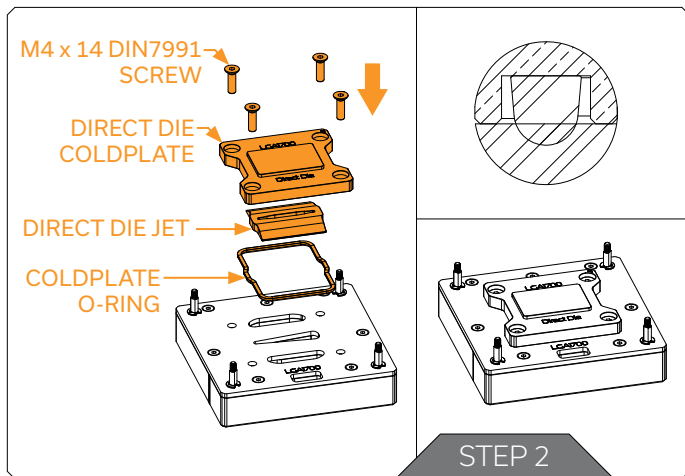
Position	EAN	Description	Quantity
1	105575	Jet Plate (Plexi)	1
2	104773	OR Coldplate	1
3	105574	Coldplate Direct Die (Ni)	1
4	104686	Screw M4 x 14 DIN7991	4
5	8202	Screw M3 x 12 DIN7991	4
6	105584	Alu - Die Guard	1
7	3831109897874	Exact Mount Velocity ² Direct Die	1

PREPARING THE WATER BLOCK



STEP 1

Take your Velocity² 1700 block, unscrew the M4 x 14 screw, and remove the coldplate, jet, and O-ring.



STEP 2

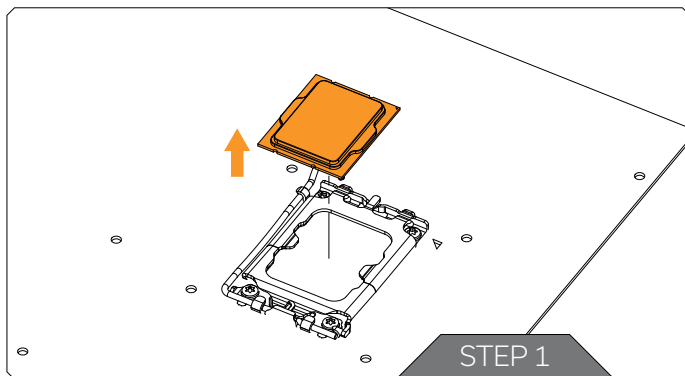
Install Direct Die Coldplate, Direct Die Jet, and O-ring on the water block using the M4 x 14 screws.

Position the O-ring so the flat part of the o-ring is in the coldplate like shown in the drawing.

PREPARING THE MOTHERBOARD

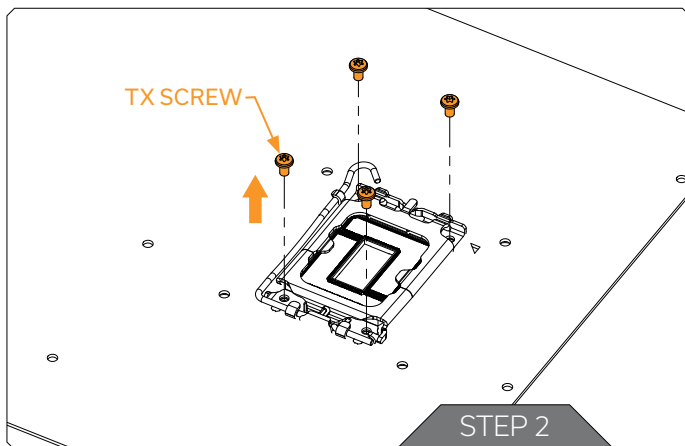
STEP 1

Remove the CPU from the socket.



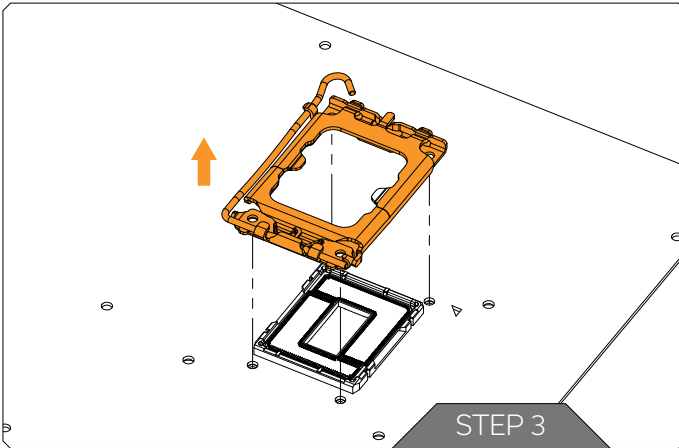
STEP 2

Remove the stock Torx screws from the motherboard. For this step, you must use TX20 Key (included in the mounting bag)



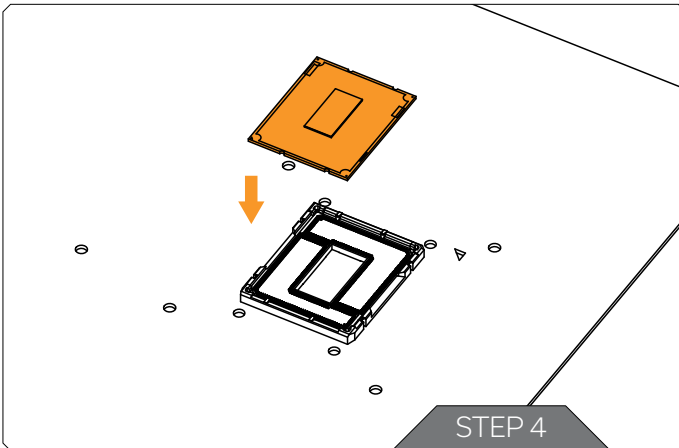
STEP 3

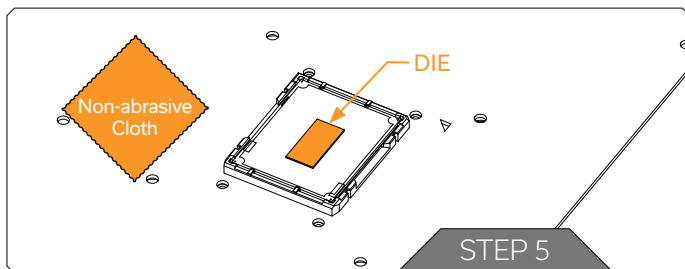
Remove the stock mounting mechanism from the motherboard.



STEP 4

Install the Delidded CPU in the socket.

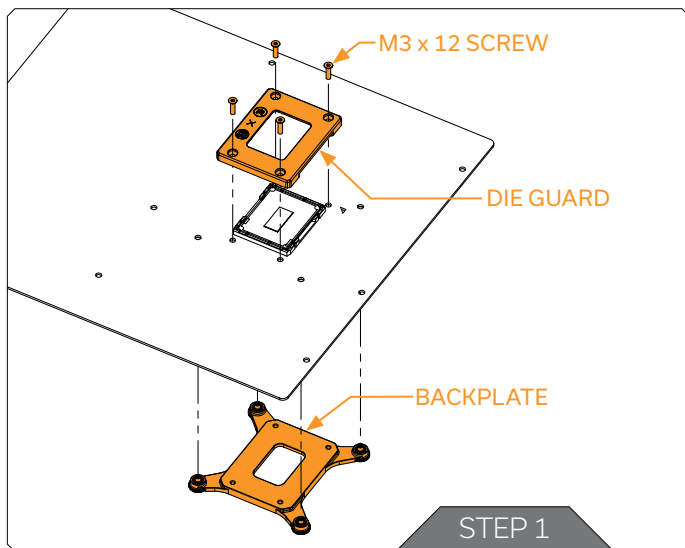




STEP 5

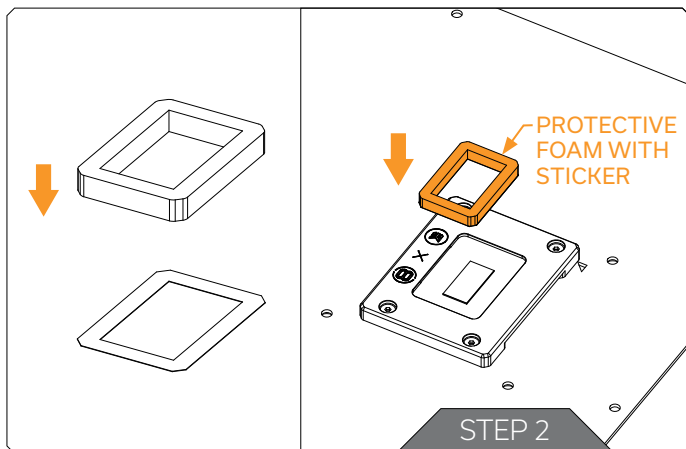
Cleaning the CPU: Wipe the DIE clean using a non-abrasive cloth or Q-tip.

INSTALLING THE DIE GUARD AND APPLYING THE PASTE



STEP 1

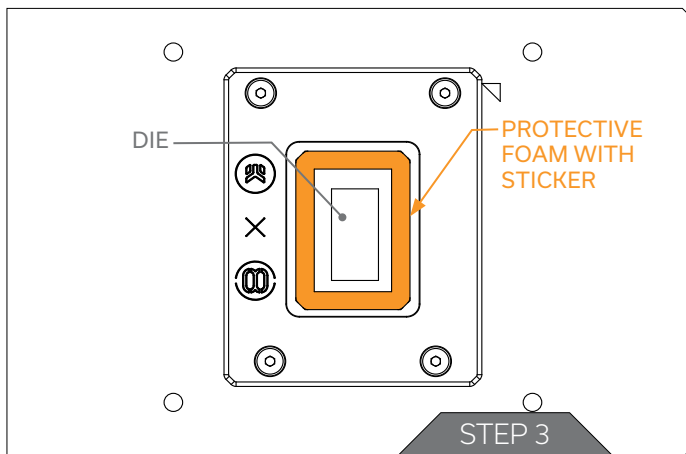
Place the DIE GUARD on the motherboard and align it with the holes. On the back of the motherboard place the BACKPLATE. Then use the M3 x 12 screw to mount the DIE GUARD to the BACKPLATE.



STEP 2

Take the Protective FOAM and glue it to the Protective STICKER on the side of the STICKER with no glue.

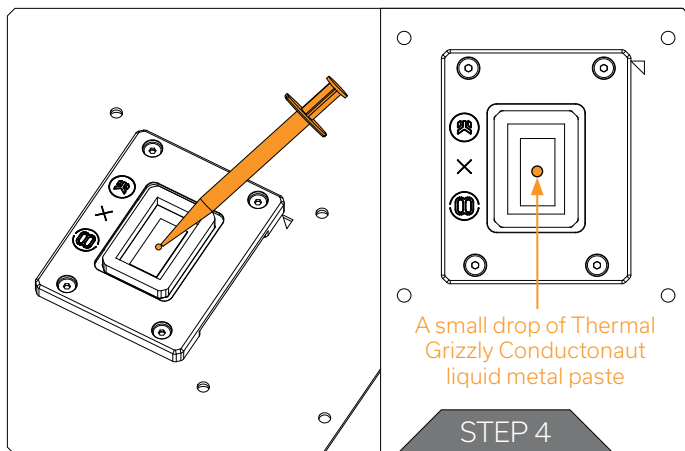
Now you can glue the Protective FOAM and STICKER on the CPU.



STEP 3

Put the protective FOAM with a sticker on the CPU so that it doesn't touch the DIE with the glue part of the facing the CPU.

Position the protective FOAM and STICKER so the DIE is in the center of the protective FOAM.



STEP 4

Apply a small drop of Thermal Grizzly Conductonaut liquid metal paste and spread it evenly over the DIE with cotton swabs that are included in the bag. Use the provided needle accessory that is included in the bag. Don't press the syringe too hard!

Use the provided needle accessory that is included in the bag. Don't press the syringe too hard!

For more information read the Thermal Grizzly Conductonaut instructions.

INSTALLING THE CPU WATER BLOCK

Proceed with installing the water block just follow the instruction manual that is posted online, chapter INSTALLING THE WATER BLOCK, page 12.

<https://www.ekwb.com/shop/EK-IM/EK-IM-3831109857663.pdf>

SUPPORT AND SERVICE

In case you need assistance or wish to order spare parts or a new mounting mechanism, please contact:


<https://www.ekwb.com/customer-support/>

For spare parts orders, refer to the page with " TECHNICAL SPECIFICATIONS AND UPGRADE KIT PARTS" where you can find the EAN number of each part you might need.


Include the EAN number with quantity in your request. Mounting Mechanism EAN can be found under "BOX CONTENTS"

Thermal pads are readily available in the EK shop


SOCIAL MEDIA

 EKWaterBlocks

 @EKWaterBlocks

 ekwaterblocks

 EKWBofficial

 ekwaterblocks

