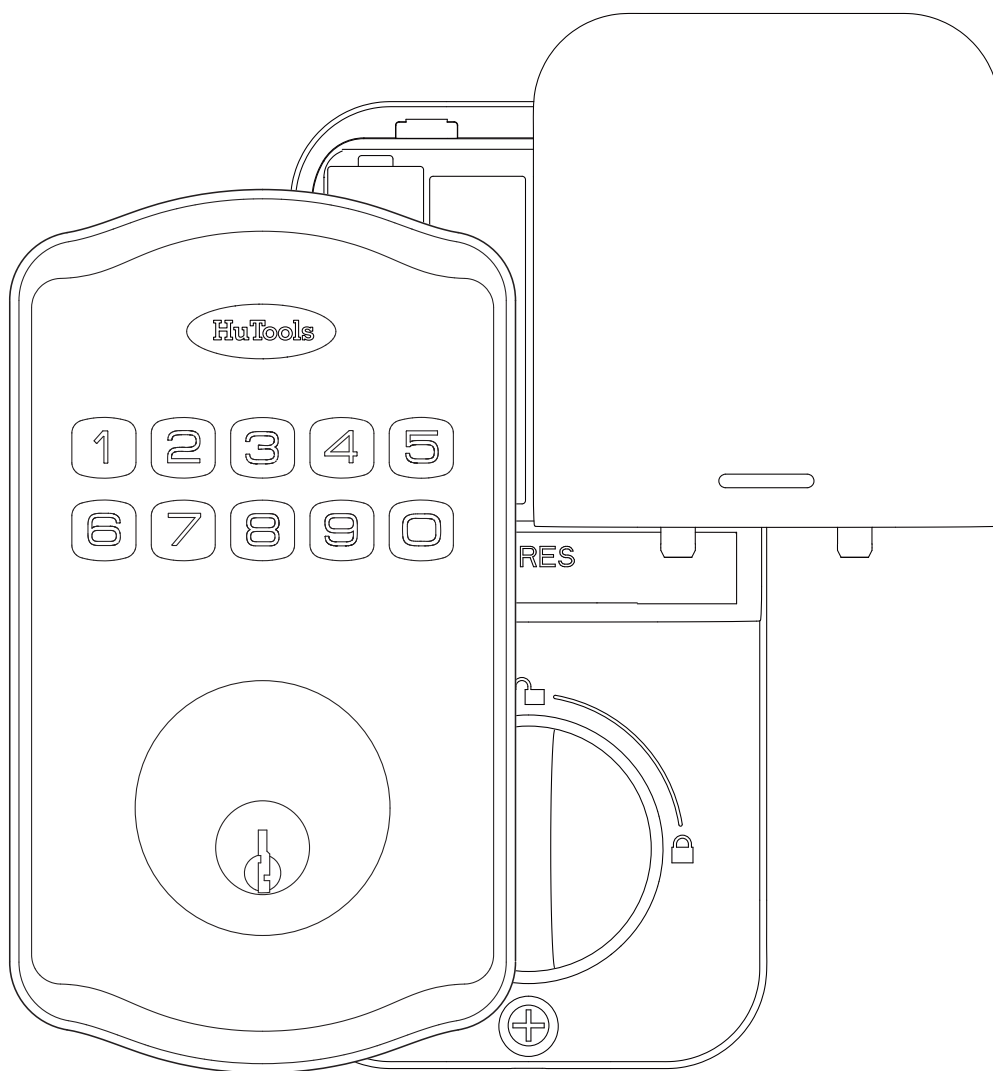


DKS01 Digital Deadbolt Lock

HuTools

Installation and Operation Manual



I Installation Overview

1

Install the physical lock
(Page 2 - 6)

2

Detect door orientation
(Page 7)

3

Change the default master code
(Page 10)

4

Customize setting
(Page 10 - 11)

Important tips to ensure a successful installation:

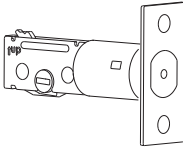

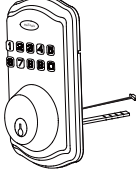
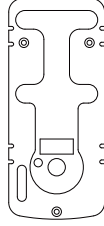
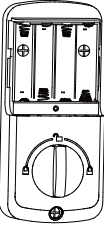
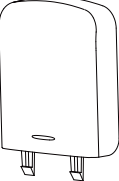


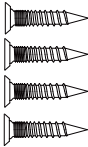
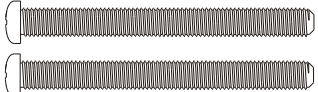
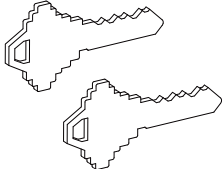
- * Always reset your lock after installation.
- * Do not use electric drill to tighten screws.
- * Wait to install the batteries until instructed to do so.
- * Do not insert the backup key before the lock is fully installed.
- * Change the default master code before programming.

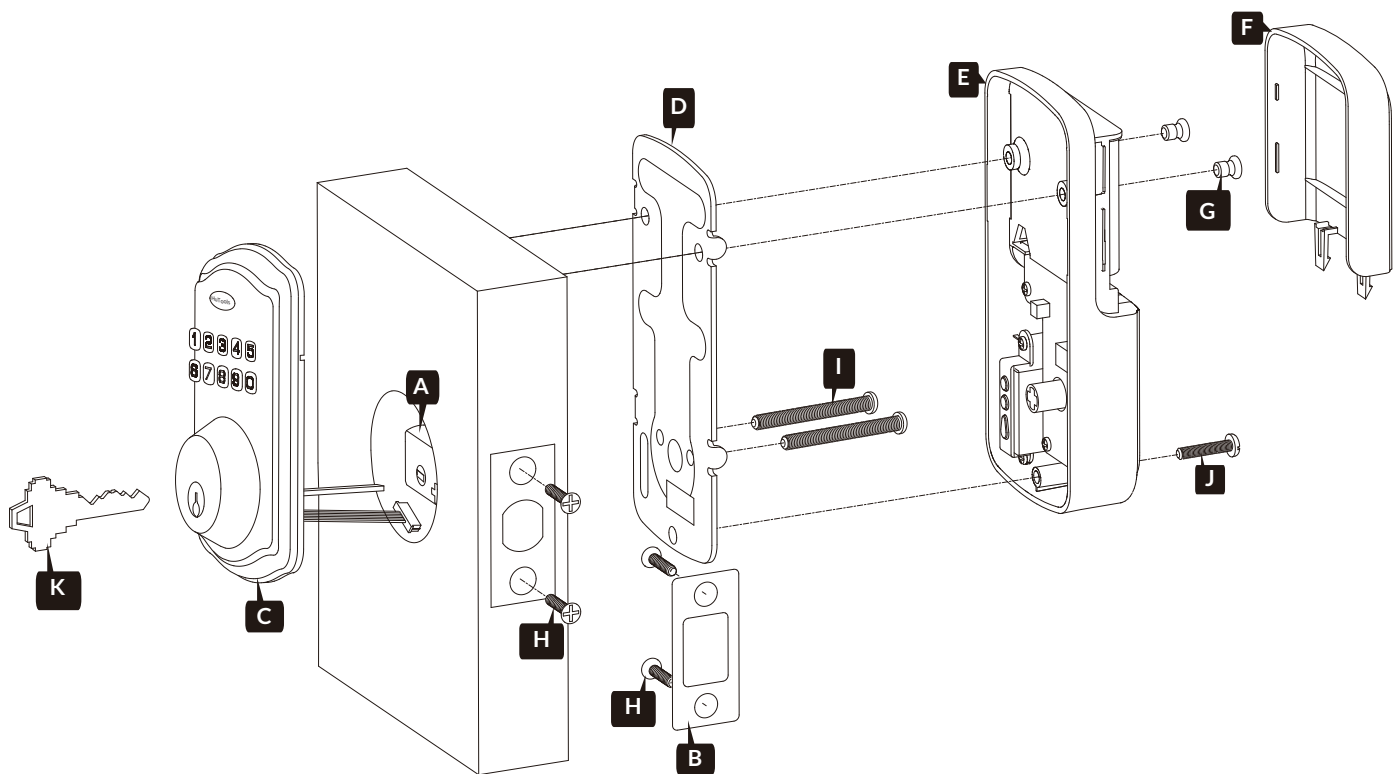


Questions?

Please reach out to us for help.

I Parts List

Latch A 	Strike B 	Keypad Assembly C 	Mounting Plate D 
Interior Assembly E 	Battery Cover F 	Interior Assembly Screws G x 2  J x 1 	Latch & Strike Screws H x 4 
Mounting Plate Screws I x 2 		Backup Keys K x 2 	



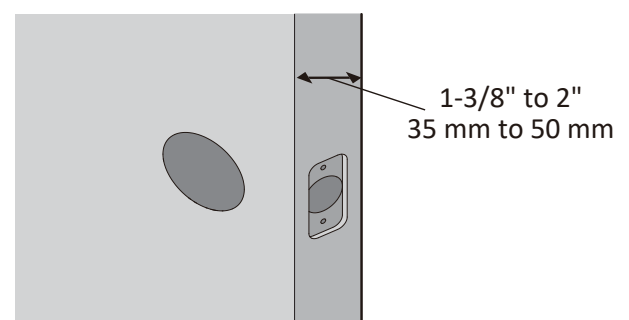
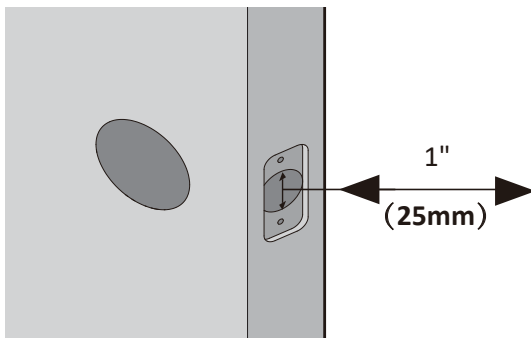
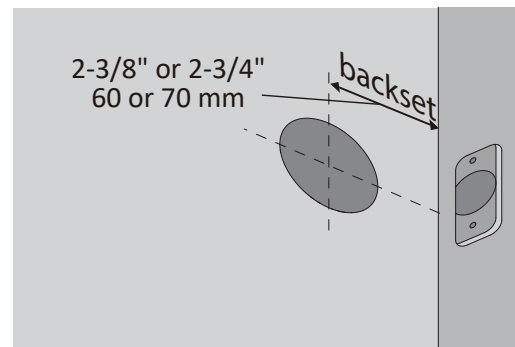
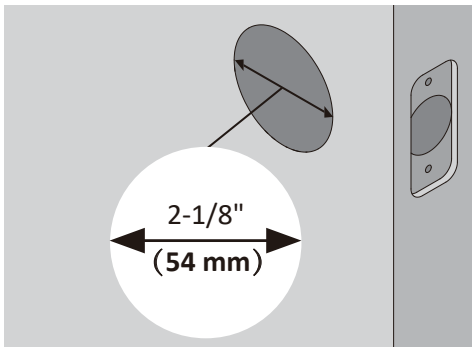
TOOL REQUIRED: 

NO ELECTRIC DRILLS



Installation Instructions

1 Door Measurements



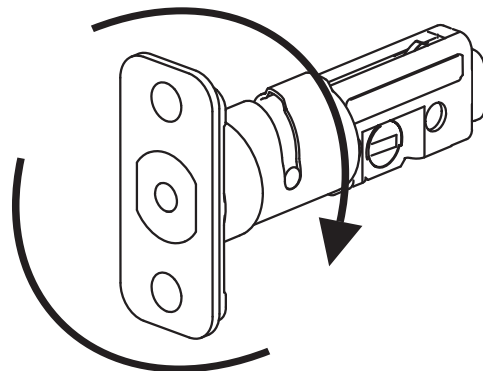
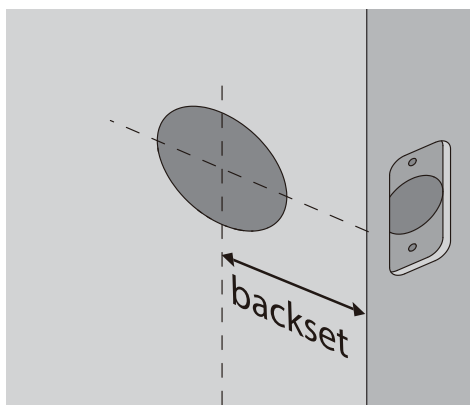
2 Adjust Latch Backset

Backset:

The distance from door edge to center of hole on door face.

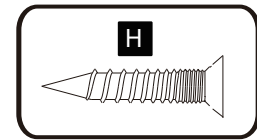
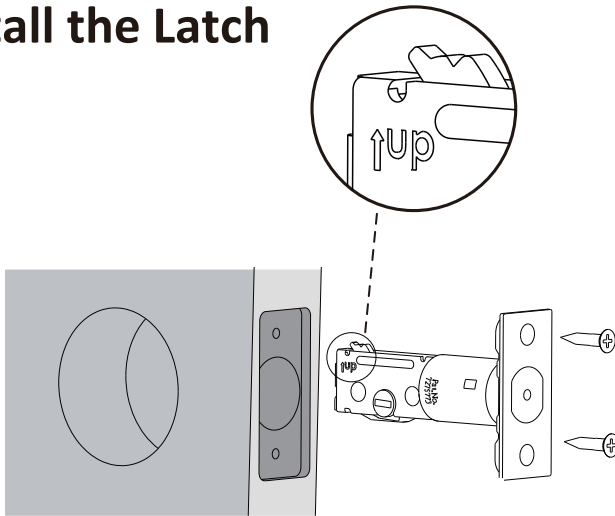
For $2\text{-}3/4"$ (70mm) backset, rotate the latch to extend latch.

For $2\text{-}3/8"$ (60mm) backset, no adjustment is needed.



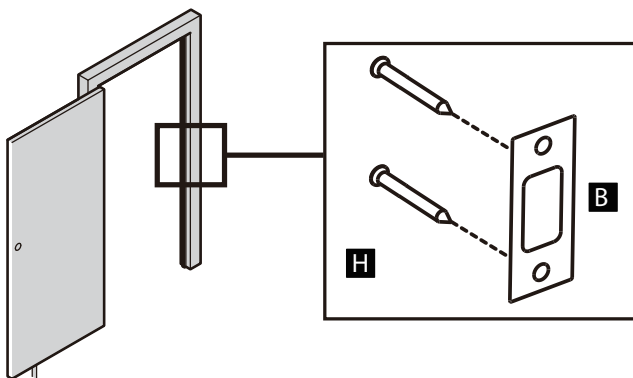
Installation Instructions (Continued)

3 Install the Latch



Do not overtighten screws.

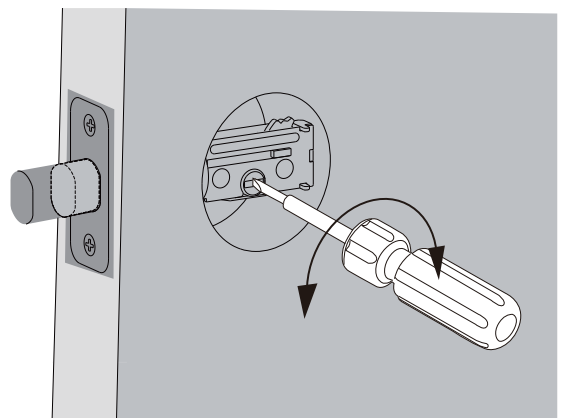
4 Install Strike on the door frame



Make sure hole in door frame is at least 1"(25mm) deep.

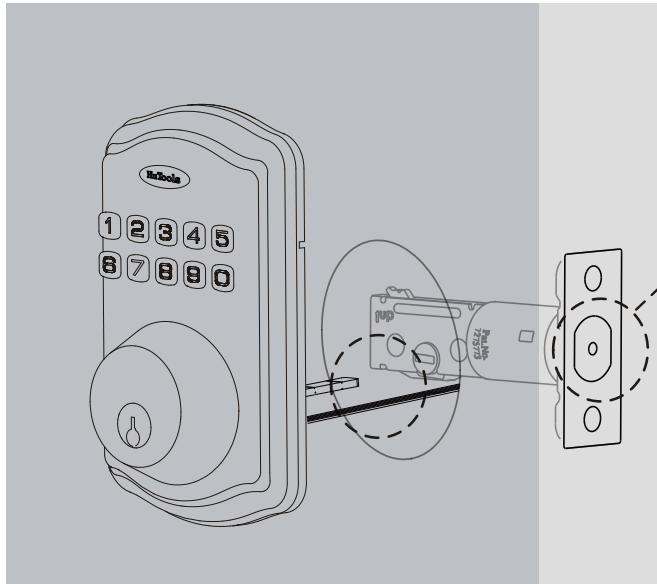
5 Check Alignment

With the door closed, check alignment between the latch and the strike plate, making sure when the deadbolt is extended, it is going into the bolt hole and not hitting the deadbolt strike or door frame.



Installation Instructions (Continued)

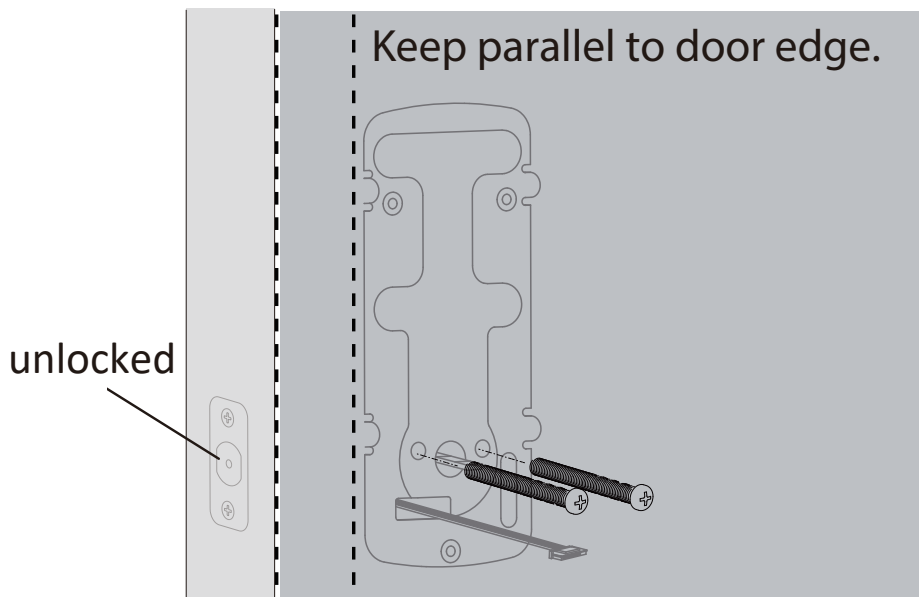
6 Install Keypad Assembly



unlocked

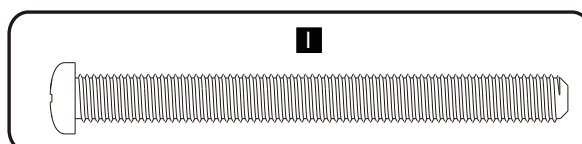
Do not insert the physical key until lock is completely installed.

7 Install Mounting Plate



Keep parallel to door edge.

unlocked

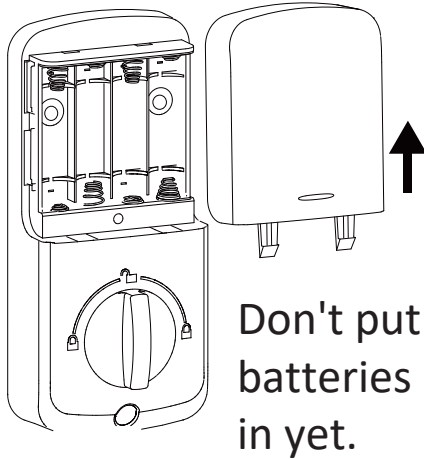


Do not overtighten screws.

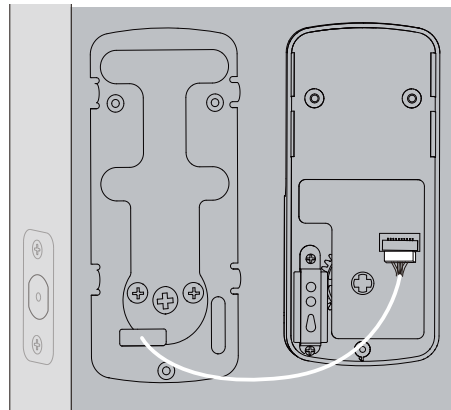
Installation Instructions (Continued)

8 Install Interior Assembly

8a

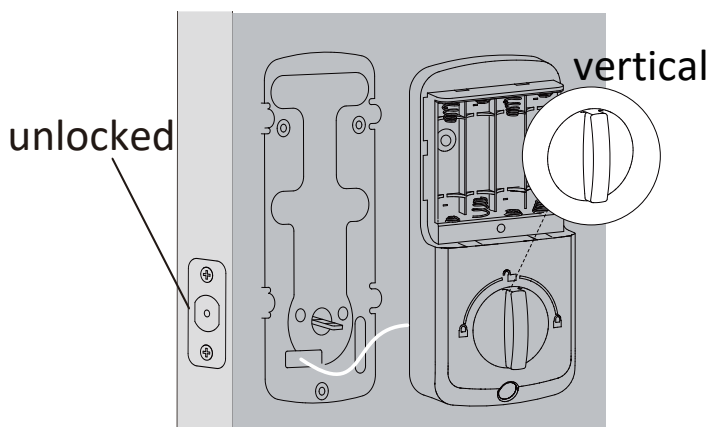


8b

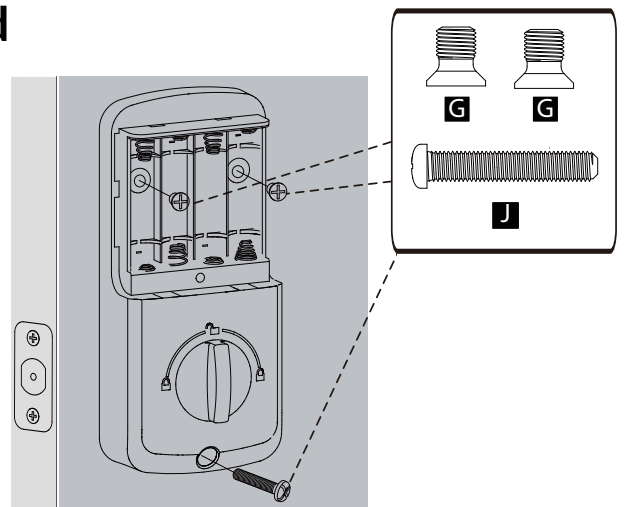


Connect the cable by pushing connector in firmly until it is completely seated .

8c

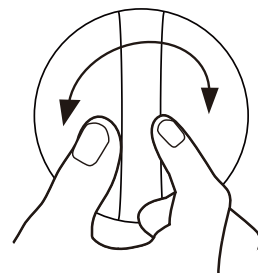


8d




8e

Check deadbolt operation by turning the thumbturn back and forth.
If thumbturn doesn't rotate, repeat steps 8c and apply much more force.



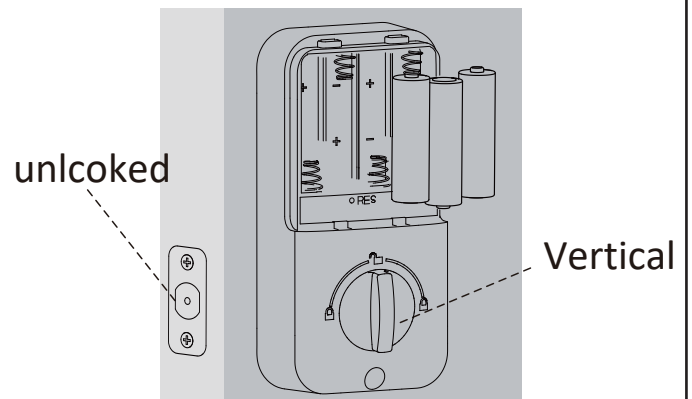
Detect door orientation / Factory reset

 Always reset your lock after installation.
The motor will not operate before completing the step.

9a

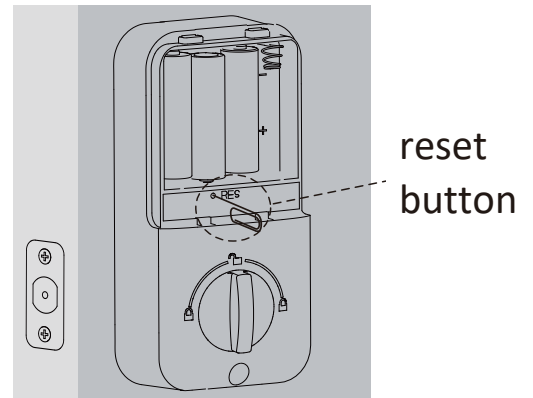
Install 3 AA batteries.

Use new, non-rechargeable Alkaline batteries only and do not mix old and new batteries.



9b

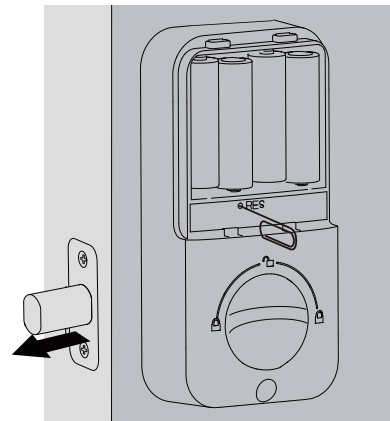
Press and hold the Reset button with a pen or a paper clip and proceed to the next step.



9c

Place the 4th battery and keep holding the reset button until the latch extend.

If the latch doesn't extend within 15 seconds, repeat step **8C** and **9A**, making sure the latch is always retracted.

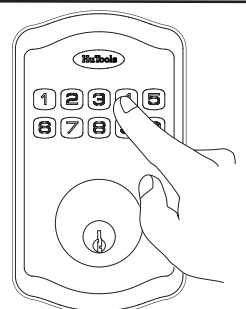


Test the Lock

(test with the door open to avoid accidental lockout)

Locking: Press and hold any key for 2 seconds.

Unlocking: Press any key to activate → 12345678 → 



Program & Use

UNLOCK from outside

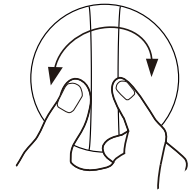
- 1 Press any key to activate.
- 2 Enter Master code / User code.
- 3 Press **HuTools** to confirm.

LOCK from outside

- Press and hold any key for 2 seconds.
- Enable Auto Lock (See page 11)

LOCK & UNLOCK from inside

- Rotate the thumbturn to lock and unlock position.



Programming Basics

 READ this before programming.

A Master Code

- Master code is the administrative code for program lock functions. It will also unlock the door. The default master code is 12345678.
- For security reason, the default master code dose not program the lock. You must change it to a code of your own prior to programming.

B Code Format

- Code is 4-10 digits long.
- Codes with the following sequence are not supported.
 - a. Forward number sequence, ex.: 123456789
 - b. Backward number sequence, ex.: 987654321
 - c. Repeat number sequence, ex.: 5555555
 - d. Contain existing code sequence,
ex.: If 4852 is an existing code, then 93674852 is not supported.

IProgram & Use (Continued)

C Wrong Entry Limit

- After 10 unsuccessful attempts at entering a valid access code, the lock will shut down for 3 minutes.

D Unlock with Fake code

User can prevent pin code exposure from strangers by entering random digits before or after pin code.



E Battery Indicator

If you see 10 red flashes after pressing any key or lock and unlock the door, that's an indication that the batteries need to be replaced soon.

Please replace with 4 new AA alkaline batteries and do not mix old and new batteries.

All settings are retained in the memory when the batteries are removed and replaced.

F Key Override

Key Override can be used to gain access when the batteries are completely dead or when no valid User Code is known.

Please keep at least one copy of the backup key in secure location outside of your place.

I Program & Use (Continued)



Important Tips:

- During a programming steps, the **HuTools** button turns green to indicate that you can proceed. Please proceed to the next steps before the green light goes off.
- If you hear 6 rapid beeps with flashing red lights, it indicates entry error. Please start over.
- Activate the keypad by press **HuTools** before programming.

A Change Master Code



The default Master Code is 12345678.

It is required that you change it to a code of your own prior to programming the lock.

HuTools → **HuTools** → Master Code → **HuTools** → ① → New Master Code → **HuTools**
→ Enter the New Code Again → **HuTools**

B Add User Code

- Up to 20 User Codes can be created.

HuTools → **HuTools** → Master Code → **HuTools** → ② → New User Code → **HuTools**
→ Enter the New User Code Again → **HuTools**

C Delete User Code

HuTools → **HuTools** → Master Code → **HuTools** → ③ → Unwanted User Code → **HuTools**

D Enable Silent Mode

- The beep sounds when pressing keypad can be muted.

HuTools → **HuTools** → Master Code → **HuTools** → ④ → ② → **HuTools**

I Program & Use (Continued)

E Disable Silent Mode

HuTools → HuTools → Master Code → HuTools → 4 → 1 → HuTools

F Enable Auto Lock

- Automatically locks the deadbolt 30 seconds after unlocking. This feature is off by default.

HuTools → HuTools → Master Code → HuTools → 5 → 1 → HuTools

G Disable Auto Lock

HuTools → HuTools → Master Code → HuTools → 5 → 2 → HuTools

H Set Auto Lock Time Delay

- You can set the Auto Lock time delay between 10 and 99 seconds.

HuTools → HuTools → Master Code → HuTools → 8 → Enter Duration Time → HuTools
(10-99)

I Add One-Time Code

- This code can only be used once and is automatically deleted when used.

HuTools → HuTools → Master Code → HuTools → 7 → New One-Time Code → HuTools
→ Enter the New Code Again → HuTools

J Vacation Mode

- This is a security feature for you when you are leaving your home for vacation or long trip.

It restrict all user codes until master code is entered on keypad.

HuTools → HuTools → Master Code → HuTools → 6 → HuTools

Program & Use (Continued)

► Factory Default Settings

Settings	Factory Default
Master Code	12345678
Auto Lock	Disabled
Silent Mode	Disabled
Wrong Code Entry Limit	10 times
Vacation Mode	Disabled

► How To Reset



By performing the steps below, you will teach the lock the orientation of your door and delete all User Codes associated with the lock.

Step1 Keep the door opened, latch retracted and thumbturn vertical.

Step2 Press and hold the reset button with one hand and the other hand takes out one battery and places it back. Keep holding the reset button until the latch extends.

► Safety Warnings

- Protect your Master Code.
- Restrict access to your lock's interior assembly and routinely check your settings to ensure they have not been altered without your knowledge.
- Proper cleaning and maintenance of your lock ensures it will continue to work as it should.
- Do not apply cleaner or detergent directly to any part of the lock.
- The HuTools lock meets IP54 water-resistance. It can withstand water splashes ; however, do not let water and liquids get into the lock.
- Avoid exposure to direct sunlight. Long-term exposure to direct sunlight may damage the lock.
- The temperature range of the HuTools lock is between -4°F to 129°F.

Troubleshooting

NO.	When	Issues	Solutions refers to
1	Reset	the latch does not extend but I CAN hear the motor turning.	A; B; C; D
2		the latch does not extend and making any sound.	E
3		I lost all the preset codes after door handing.	F
4	Program	I received 6 rapid beeps when programming.	G
5		I forgot my master code.	E
6		I want to delete a user code but don't remember the code.	E
7	Using	The thumbturn can not be rotated manually.	H
8		The keypad doesn't respond when touched.	I
9		The lock does not lock or unlock electronically.	E
10		The lock only functions electronically when the backup key is in; I cannot pull the key out in the unlocked or locked position.	H
11		The latch bolt doesn't FULLY extend or retract, unless turn the knob manually.	C; D
12		When attempting to LOCK or UNLOCK the deadbolt electronically, the latch goes in and out for a few times.	J

Troubleshooting

Solutions	
A	The latch and strike are misaligned, causing the latch to bind. <ul style="list-style-type: none"> • Adjust the position of the strike plate on latch bolt. • Make sure you reset the lock with the door opened. • Do not over tighten screws.
B	Clear residual charge: take out all batteries and unplug power cable wire; press random buttons on keypad for one minute; let the lock sit for 2 minutes, before reconnecting the cable and reinstall batteries.
C	Slightly loosen the screws(H and I) that secure the latch bolt and exterior keypad.
D	Remove the lock from the door and assemble the lock by holding all the parts together with your hands. Reset your lock and enter your code to see if the lock works.
E	Repeat (Step 9) for factory reset. Make sure reset it properly. Once the reset is completed, all codes and settings will be erased and the master code will return to the default value (12345678).
F	Door handing is the same as factory reset. Your lock has restored to factory default. Re-program your codes.
G	Six rapid beeps indicates enter error or time out. Check your master code and code format.
H	Remove and re-install the whole lock, making sure that the thumbturn is vertical and the lock is in unlock position when installing. Do not insert the backup key when installing.
I	<ul style="list-style-type: none"> • Make sure the cable is properly connected. • Change the batteries with 4 fresh AA standard alkaline batteries. Do not mix old and new batteries.
J	<ul style="list-style-type: none"> • Make sure the bolt hole on the door frame is at least 1 inch deep so the bolt fully extends. • Check if the door closes properly. Make sure when the deadbolt is extended, it is going into the bolt hole and not hitting the deadbolt strike or door frame. • Check for loose door hinges.

*** If none of the above resolves your issue, please let us know.**