

Uninterruptible Power Supply (UPS) RT Design

ZIRCONTM
The Smart Power Solution

model
Pi
prime

Advance Protection

- Server • Network Device
- Workstation • Gaming Com
- Storage devices • PSU80+
- Play Station (PS4/PS5)
- Medical • iMac

FEATURES

- Fully Pure sine wave
- Digital Display
- Output power factor (PF.) 0.8
- DSP digital control Technology
- Boost and buck AVR voltage stablition
- Frequency adaptive
- Adjustable charge current and battery shutdown point.
- Settable no-load shutdown
- Humanized alarm system
- Power On Self Test, Cold start
- Automatic startup when AC recovers
- Intelligent battery management
- Short circuit and overload protection
- Automatic charging at UPS Off mode
- USB & RJ45,AS400/SNMP (optional) communication port



SNMP Card (Optional)

The iSearch product is a PC software designed to facilitate the monitoring of SNMP by managers. This software provides monitoring and management of SNMP cards in LAN.

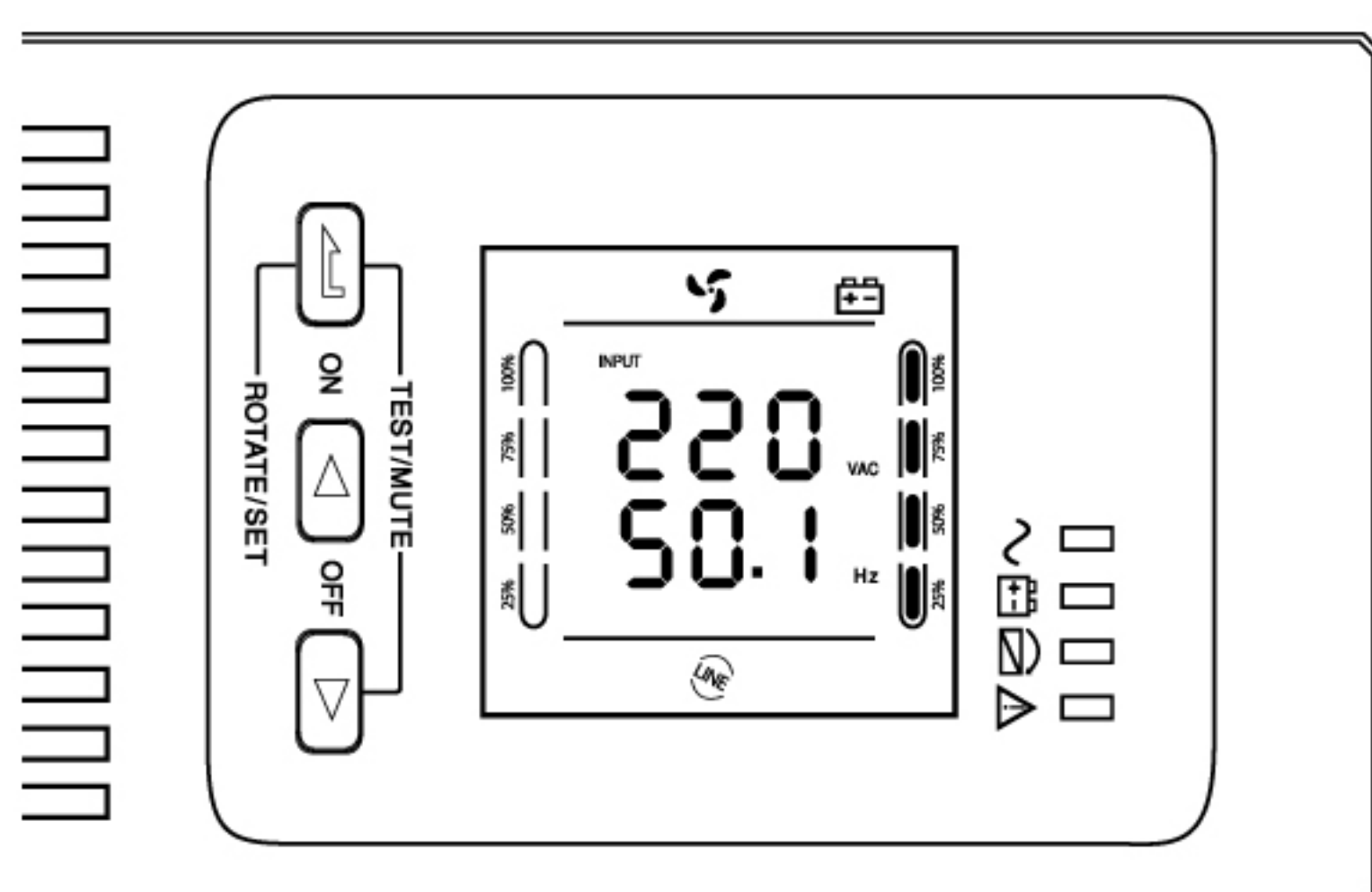


1kVA : 2U

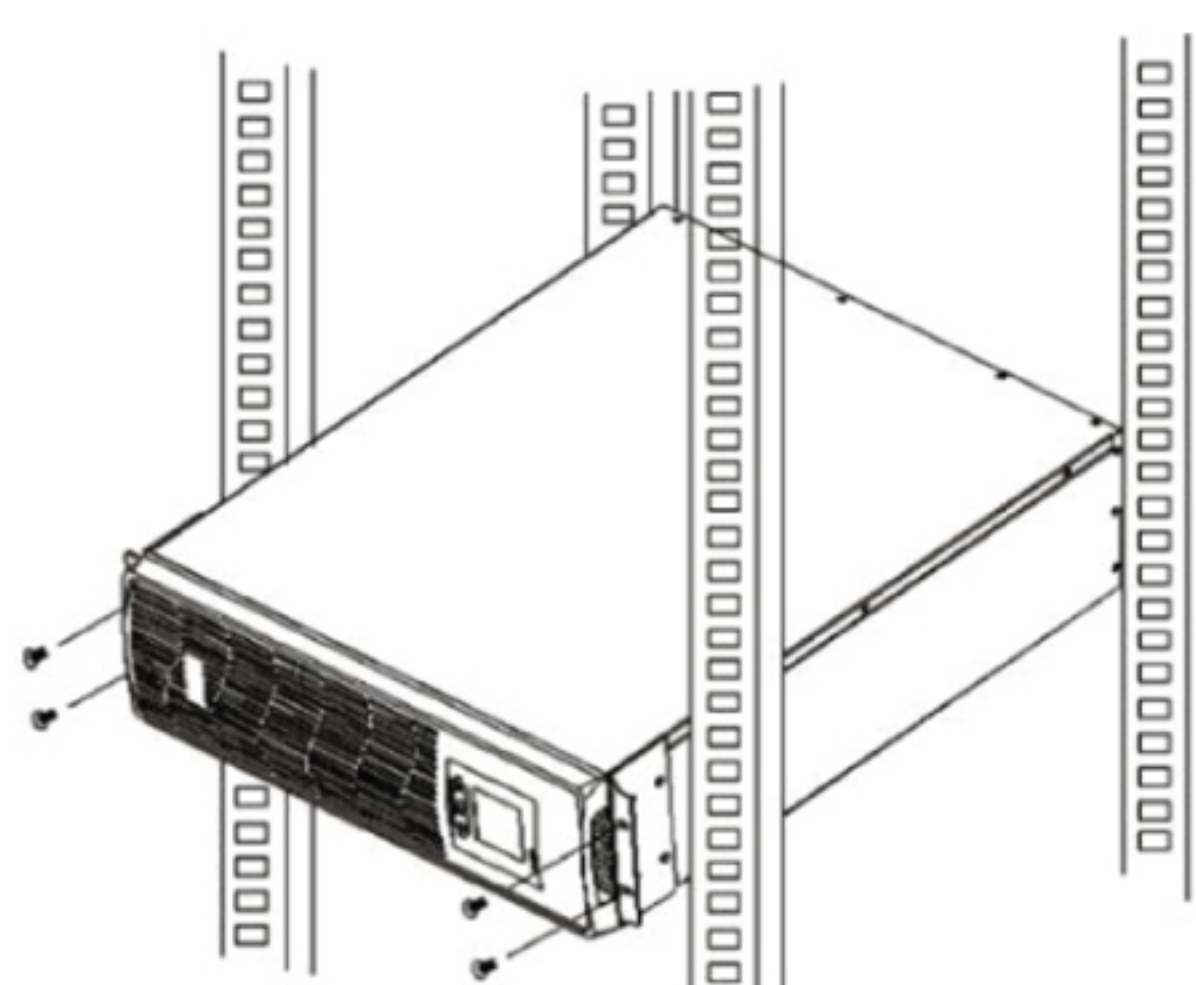
1.5-3kVA : 3U

ZIRCON "PI-PRIME Series"

Power : 1KVA-3KVA UPS provides a sinusoidal output with power factor 0.8. It ensures a high level of protection against mains power disturbances. When the mains power supply fails, it powers sensitive equipment with a perfectly sinusoidal supply for maximum power continuity and reliability. It is the ideal solution for the protection of peripheral network devices, servers, and network backup systems



Intuitive LCD display forease of configuration and management



PI-PRIME Rack Installation
(No RAILKIT)



**ENERGY SAVING
FULLY PURE SINWAVE
RACK & TOWER (RT)**

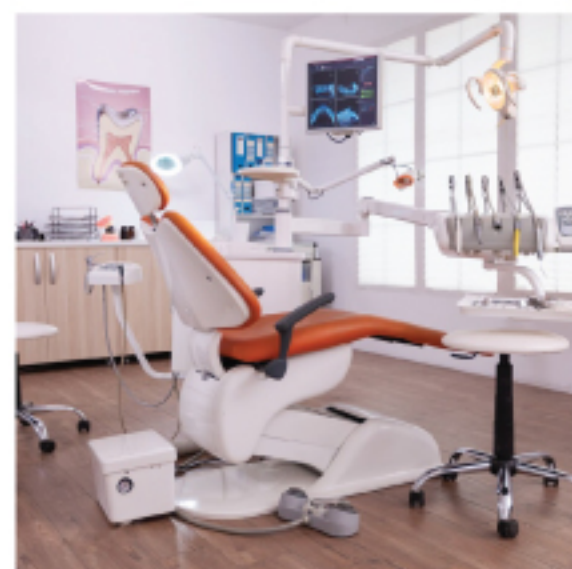
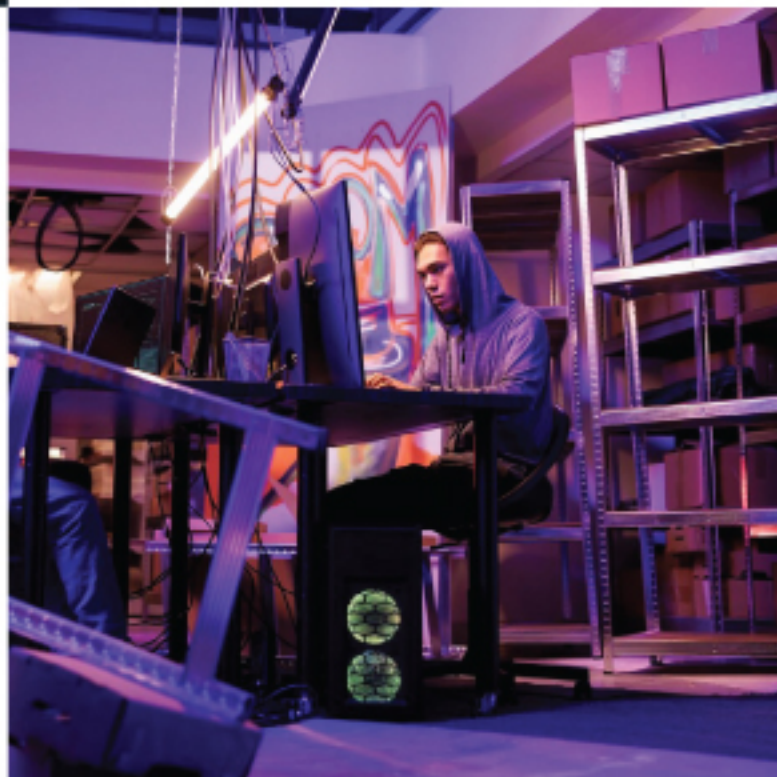
www.zircon.co.th

Advance Protection



*Server
Network Devices*

*Gaming Com /PSU80+
PS4/iMac*



Medical

*Security
system*



Exceptional efficiency, manageability and energy metering capabilities for IT managers

Manageability

The new graphical LCD display provides clear information on the UPS's status and measurements on a single screen. Enhanced configuration capabilities are also available with easy-to-use navigation keys.

the PI-Prime can meter energy Load: Display WATT and VA values of the connected load, depending on load type and load capacity

- Input: Display the input voltage and input frequency
- Output: Display UPS output voltage and output frequency
- Temperature: Display the temperature inside the cabinet
- Battery: Display the battery voltage and battery capacity

Performance and Efficiency

With an optimised electrical design, the PI-prime can provide up to 99% efficiency, reducing cooling and utility costs. With a power factor of 0.8, the PI-prime delivers more real output power. The PI-prime is compatible with all modern IT equipment.

Availability and Flexibility

The PI-prime is available in a rack/tower convertible.

Stronger, longer battery life: ZIRCON battery management technology uses an innovative three-stage charging technique that only recharges the battery when necessary, so the battery experiences less corrosion and service life is prolonged by up to 50%.

PI-PRIME

Professional Rackmount Series

PIPRIME10002U/PIPRIME15003U
PIPRIME20003U/PIPRIME30003U

PF 0.8

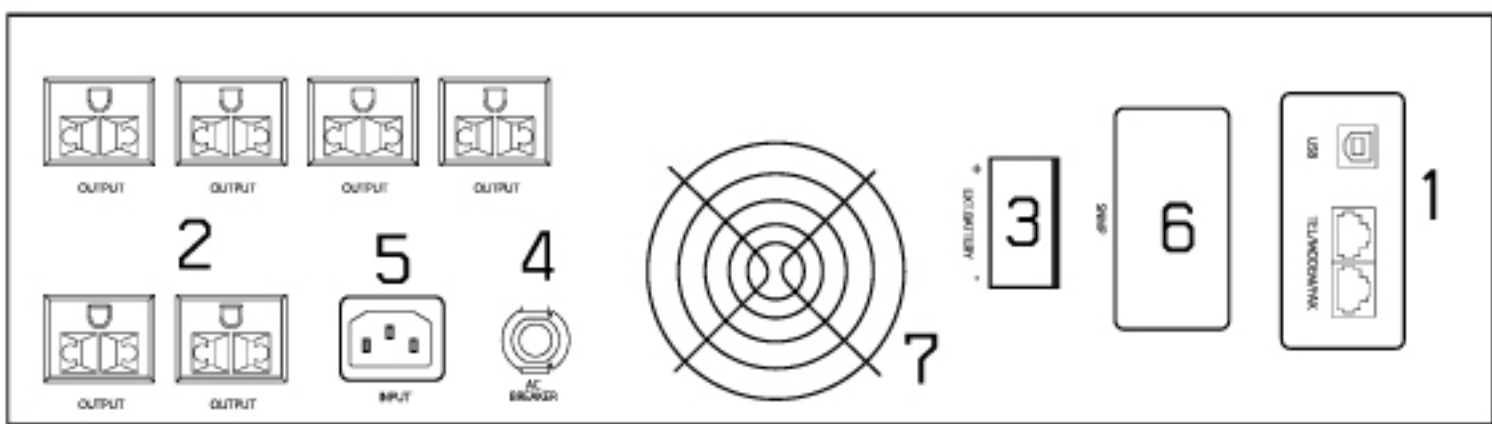
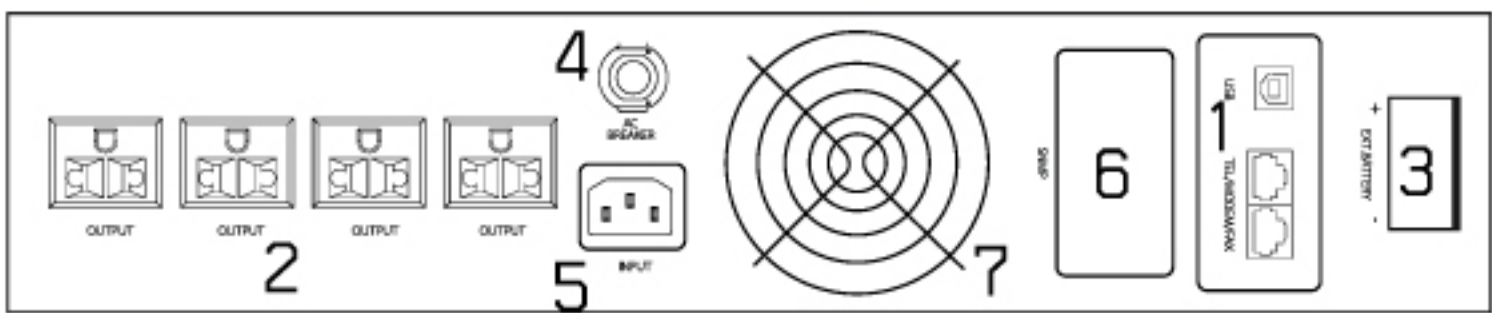
- :: 1000VA/800W
- :: 1500VA/1200W
- :: 2000VA/1600W
- :: 3000VA/2400W



Specifications

| MODEL | | PI-Prime 500 | PI-Prime 1000 | PI-Prime 1500 | PI-Prime 2000 | PI-Prime 3000 |
|----------------------------------|--------------------------------------|--|---------------------|---------------------|-----------------------------|------------------|
| Capacity | | 500 VA / 300 W | 1000 VA / 800 W | 1500 VA / 1200 W | 2000 VA / 1600 W | 3000 VA / 2400 W |
| DC INPUT | | | | | | |
| Rated voltage | | 12 V | 24 V | | 36 V (S) 48 V (H) | 48 V |
| DC input range (default) | | 10 ~ 15 V | 20 ~ 30 V | | 30 ~ 45 V (S) 40 ~ 60 V (H) | 40 ~ 60 V |
| AC INPUT | | | | | | |
| Input Voltage | | 220 / 230 / 240 Vac +/-25% | | | | |
| Frequency input range | | 50 / 60 Hz (auto-sensing), 50 / 60 Hz ± 5% ~ 15% | | | | |
| Generator connection | | Available (generator input power is settable) | | | | |
| OUTPUT | | | | | | |
| Output Voltage (AVR/Battery) | | 220 / 230 / 240 Vac +/-5% (Settable) | | | | |
| Output frequency | | 50Hz / 60Hz +/-0.1% (Settable) | | | | |
| Waveform | | Pure sine wave | | | | |
| Inverter efficiency | | Max. 75% | Max. 80% | | Max. 85% | |
| Energy saving mode | | Settable (< 3% load), enter in 80 s | | | | |
| No-load shutdown | | Settable (< 3% load), shut down in 80 s | | | | |
| Transfer time | | typical 2-4 ms. | | | | |
| THDV (resistive load) | | ≤ 5% | | | | |
| Protections | | Overload, short circuit (inverter), battery low voltage, battery overcharge, overtemperature | | | | |
| Overload (mains mode) | | 110% for 120 s, 125% for 60 s, 150% for 10 s (transfer to bypass mode) | | | | |
| Overload (inverter mode) | | 110% for 60 s, 125% for 10 s, 150% for 5 s (shut down directly) | | | | |
| Mute | | Automatic mute in 60 s or by manual | | | | |
| BATTERIES | | | | | | |
| Inbuilt battery (standard model) | | / | 12 V / 7 Ah x 2 | 12 V / 9 Ah x 2 | 12 V / 9 Ah x 3 | 12 V / 9 Ah x 4 |
| Charging current | | Standard model (S): 1 A (default) | | | | |
| Equalizing charge voltage | | Single battery 14.1 Vdc (default), 13.6 ~ 15 Vdc adjustable | | | | |
| Floating charge voltage | | Single battery 13.5 Vdc (default), 13.2 ~ 14.6 Vdc adjustable | | | | |
| Low voltage alarm point | | Single battery 10.8 Vdc (default), 9.6 ~ 13 Vdc adjustable | | | | |
| Low voltage shutdown point | | Single battery 10.2 Vdc (default), 9.6 ~ 11.5 Vdc adjustable | | | | |
| Battery Type | | Seal lead acid maintenance free battery | | | | |
| Battery Back-up | | 15-30 Mins.(Depend on loads), 5 Mins at fullload | | | | |
| OTHERS | | | | | | |
| Topology | | Line Interactive UPS | | | | |
| Communications | | USB & RJ45 (standard), dry contacts / SNMP (optional) | | | | |
| Operating temperature | | 5℃ ~ 40℃ | | | | |
| Operating humidity | | Relative humidity ≤ 93% | | | | |
| Noise level | | ≤ 50 dB (1 m) | | | | |
| Rack-mount | Dimensions (W × D × H) (mm) | / | 440 × 338 × 88 (S) | 440 × 410 × 132 (S) | | |
| | Packaged dimensions (W × D × H) (mm) | / | 611 × 448 × 208 (S) | 611 × 505 × 235 (S) | | |
| | Net weight (kg) | / | 14.6 (S) | 17.2 (S) | 21.3 (S) | 26.7 (S) |
| | Gross weight (kg) | / | 16.8 (S) | 20.4 (S) | 24.5 (S) | 30.5 (S) |

- All specifications are subject to change without notice.
- Custom-made specifications are acceptable.



- Rear Panel**
1. USB port / RJ45
 2. Output Universal Outlet
 3. EXT. battery [Optional]
 4. AC Breaker
 5. Input
 6. SNMP [Optional]
 7. Fan