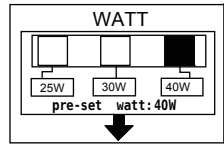
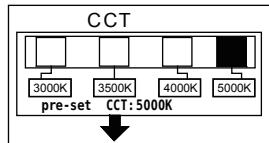


LED TROFFER

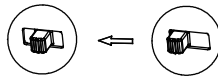
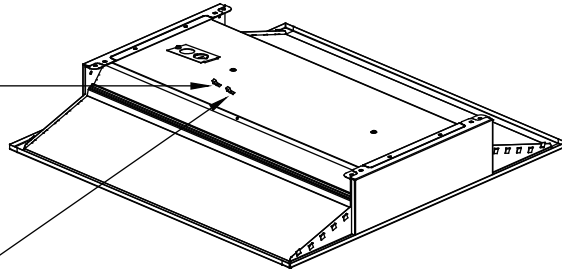
CCT AND WATT CHANGING



WATT CHANGING: 25W/30W /40W



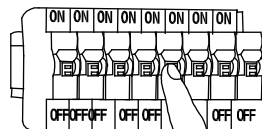
CCT CHANGING: 3000K/3500K/4000K/5000K



Installation manual

A.T-Grid ceilings installation

Step1

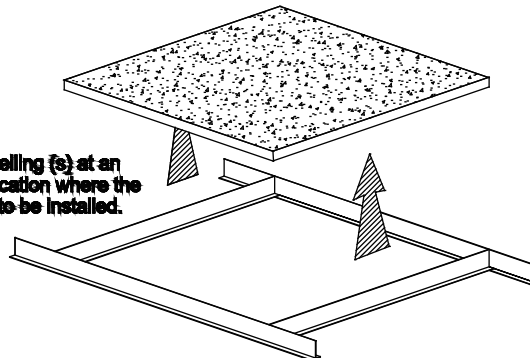


OFF

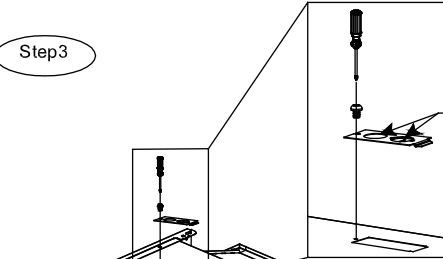
Turn off the switch

Step2

Remove the ceiling (s) at an appropriate location where the light fixture is to be installed.



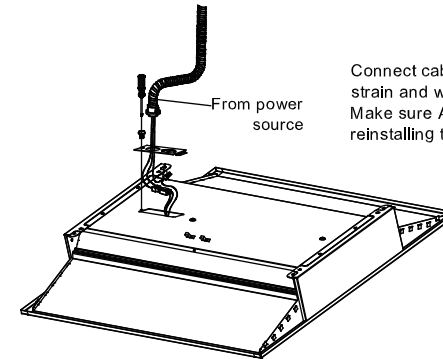
Step3



Power Leads Connection Remove screw holding access cover plate and remove the necessary knockout

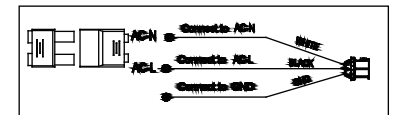
Knockout

Step4



Connect cable wires with appropriate relief strain and wire connectors(ont provided). Make sure ALL wires are tucked in before reinstalling the cover plate.

Wiring Diagram



Step5

