



Affordable. Reliable. Home Improvement.

GLASS TV STAND

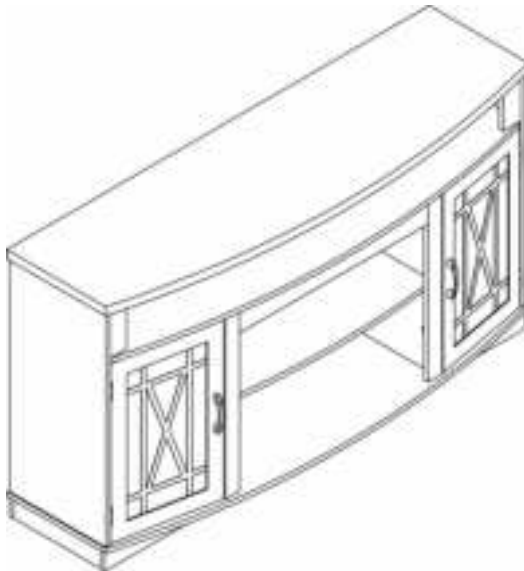
MODEL: C250034D-01

VEVOR

Affordable. Reliable. Home Improvement.

GLASS TV STAND

MODEL: C250034D-01



This is the original instruction, please read all manual instructions carefully before operating. VEVOR reserves a clear interpretation of our user manual. The appearance of the product shall be subject to the product you received. Please forgive us that we won't inform you again if there are any technology or software updates on our product.

SAFETY INSTRUCTIONS

WARNING:

Read this material before using this product. Failure to do so may result in serious injury.

Assembly precautions

1. Assemble only according to these instructions. Improper assembly may create hazards.
2. Wear ANSI-approved safety goggles and heavy-duty work gloves during assembly.
3. Keep the assembly area clean and well-lit.
4. Keep bystanders out of the area during assembly.
5. Do not assemble if tired or when under the influence of alcohol, drugs or medication.
6. The product capabilities apply to properly and completely assembled products only.
7. Assemble on a flat, level, hard and smooth surface capable of safely supporting the Glass TV Stand.
8. For additional information regarding the parts listed in the following pages, please refer to the Assembly Diagram of this manual. Unwrap and separate all parts in a clean work area.

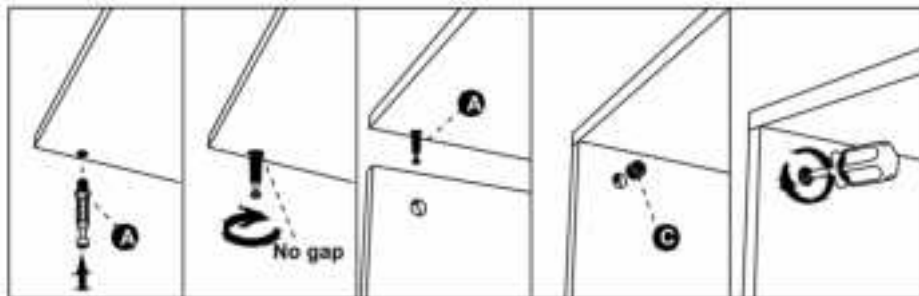
Use precautions

1. DO NOT SIT OR STAND ON THIS ITEM.
2. This product is not a toy. Do not allow children to play with or near this item.
3. Do not exceed specified weight capacities.
4. Use only on a flat, level, hard, and smooth surface that can safely support a fully loaded Glass TV Stand.
5. Use as intended only.
6. Inspect before every use; do not use if parts are loose or damaged.

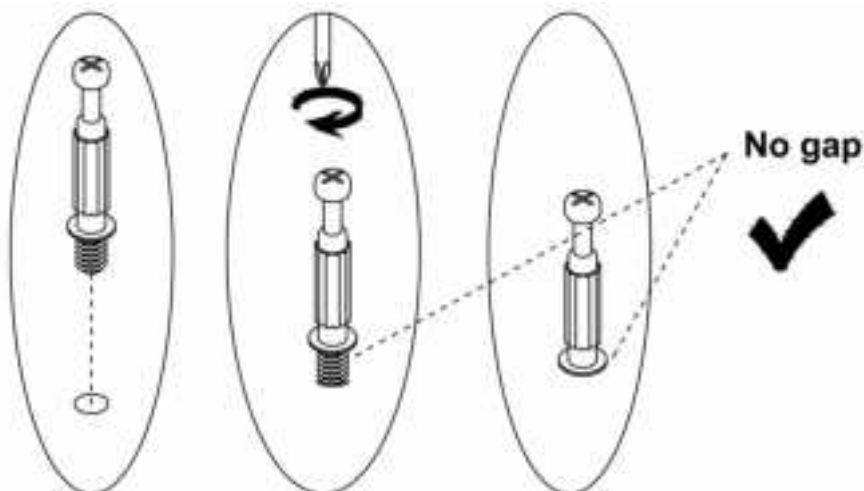
SAVE THIS MANUAL

INSTALLATION OF CAMS AND PINS

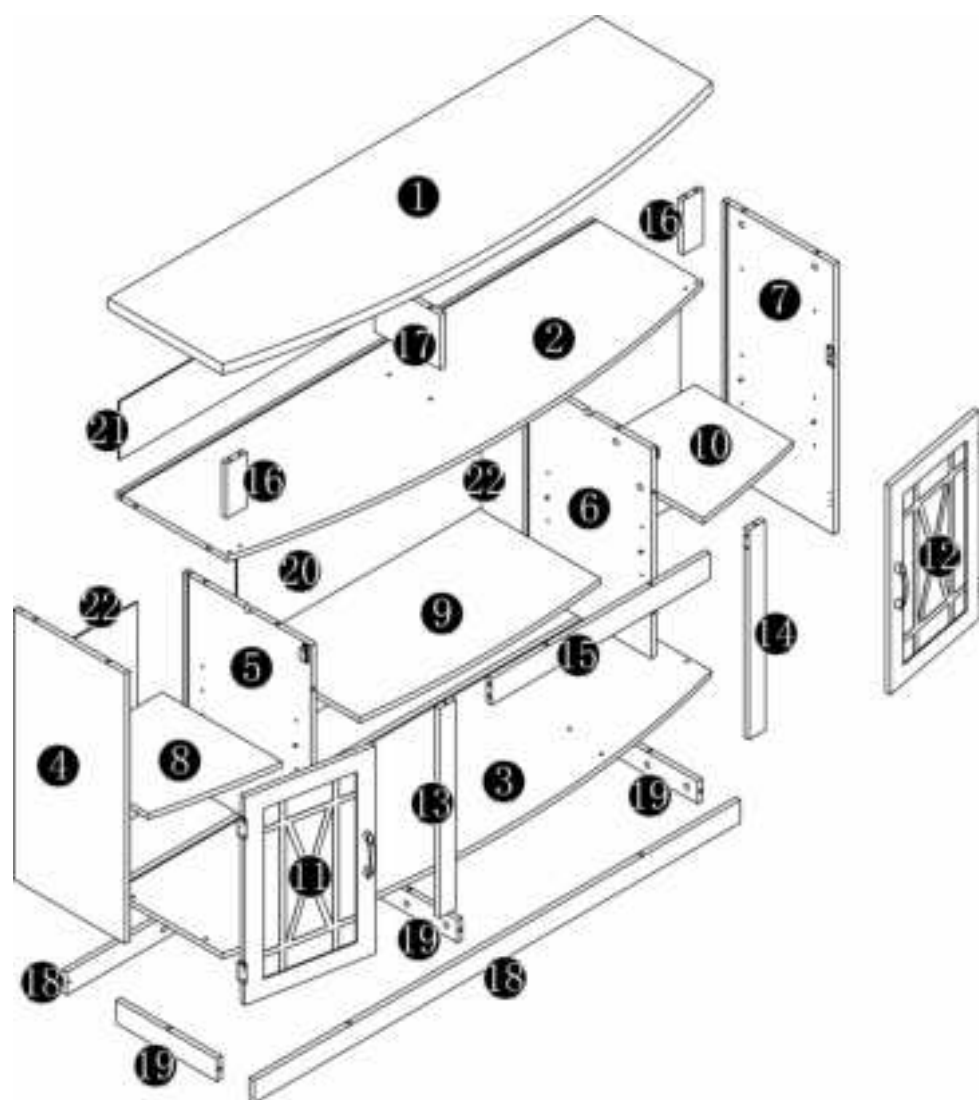
Screw the pin into the hole. To set the cams correctly, ensure that the arrow on the cam is opening to the hole of the pin it is locking. Lock the cam by turning the cam head with a screwdriver until it is tightened. Please do not use an electric screwdriver to assemble the unit.

























Read each step carefully before starting. It is very important that each step of instruction is performed in the correct order. If these steps are not followed in sequence, assembly difficulties will occur.



PARTS LIST



PARTS LIST

 ① 1pc	 ② 1pc	 ③ 1pc	 ④ 1pc
 ⑤ 1pc	 ⑥ 1pc	 ⑦ 1pc	 ⑧ 1pc
 ⑨ 1pc	 ⑩ 1pc	 ⑪ 1pc	 ⑫ 1pc
 ⑬ 1pc	 ⑭ 1pc	 ⑮ 1pc	 ⑯ 2pcs
 ⑰ 1pc	 ⑱ 2pcs	 ⑲ 3pcs	 ⑳ 2pcs
 ㉑ 1pc		 ㉒ 2pcs	

PARTS LIST

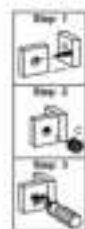
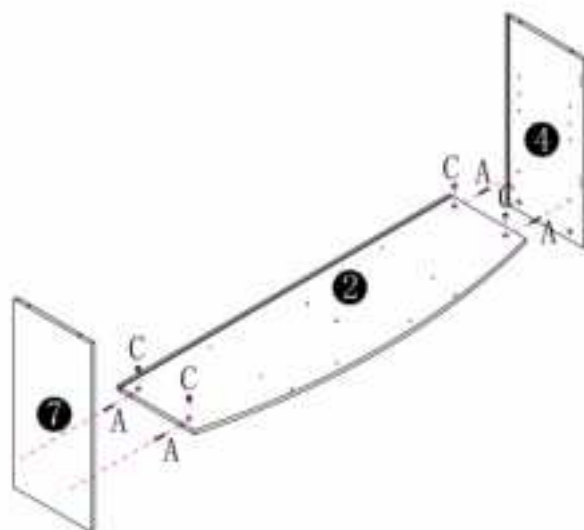
 A 37pcs	 B 12pcs	 C 37pcs	 K 2pcs
 O 10pcs	 P 44pcs	 Q 2pcs	 S 4pcs
 T 12pcs	 U 1pc	 V 4pcs	 W 2pcs
 X 4pcs	 Y 12pcs	 Z 1set	

ASSEMBLY STEP

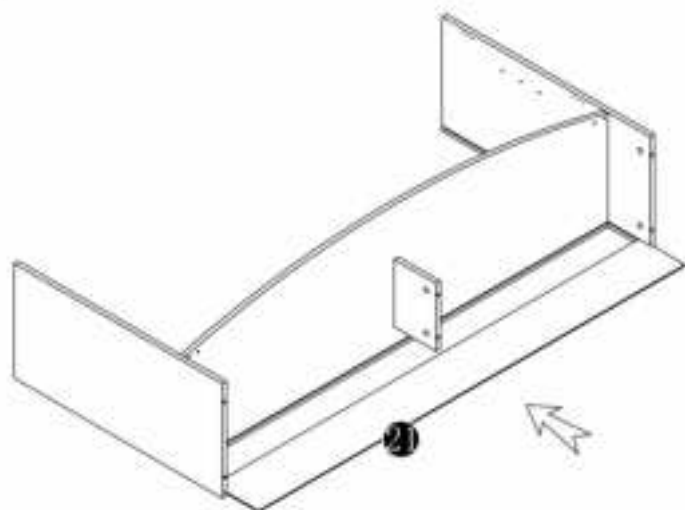
1



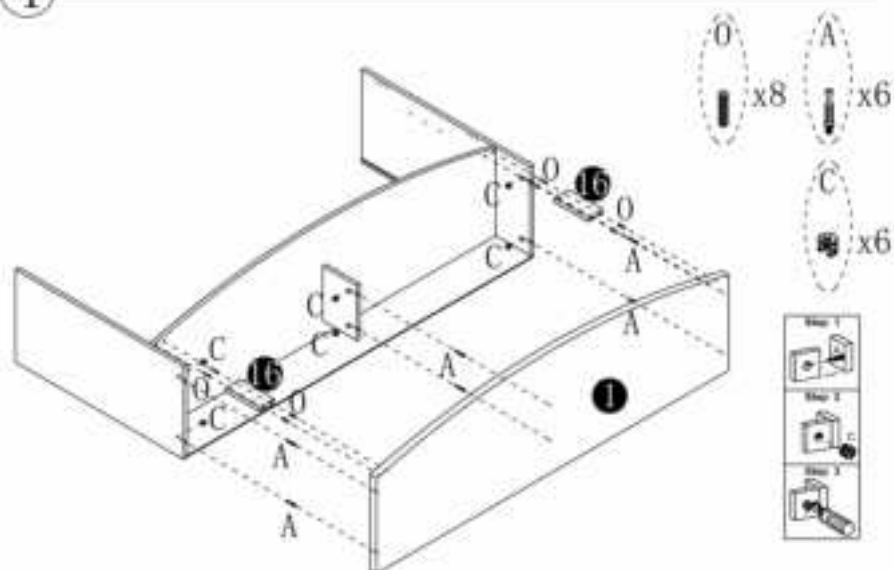
2



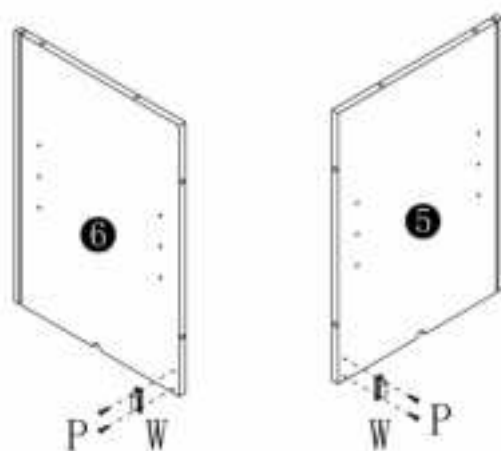
3



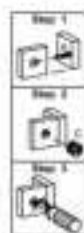
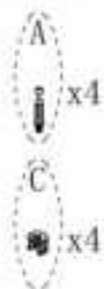
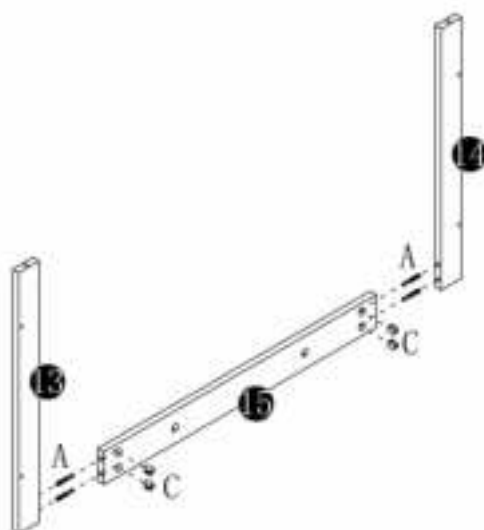
4



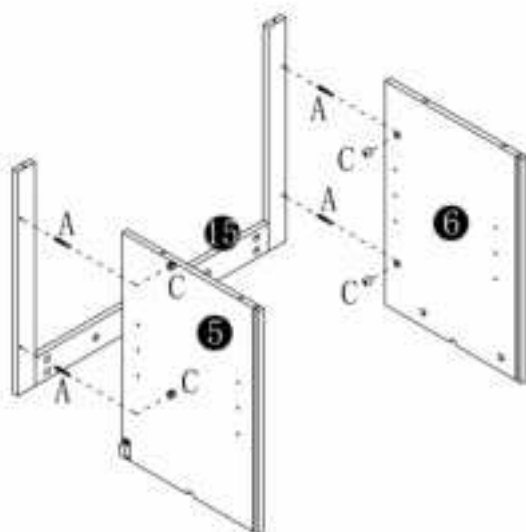
5



6

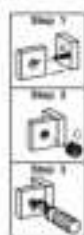


7

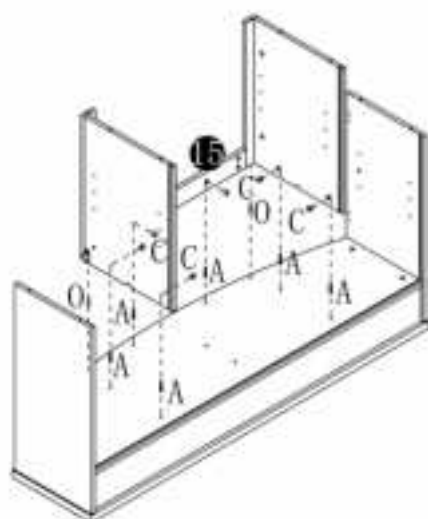


A x4

C x4



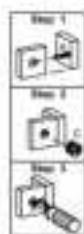
8



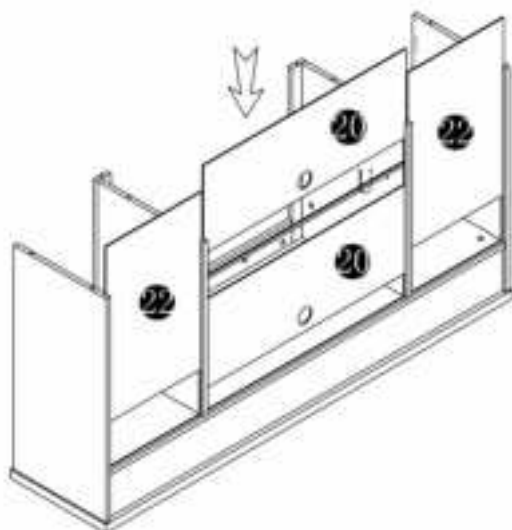
O x2

A x6

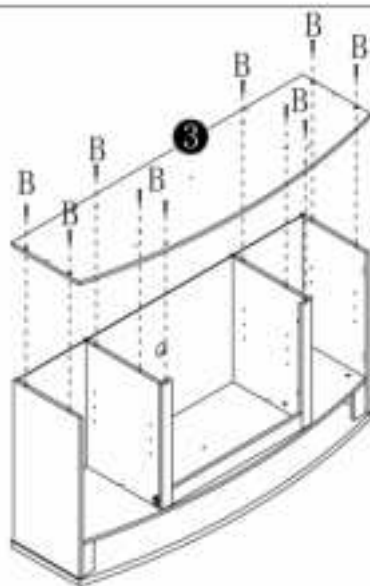
C x6



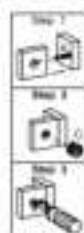
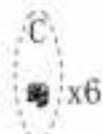
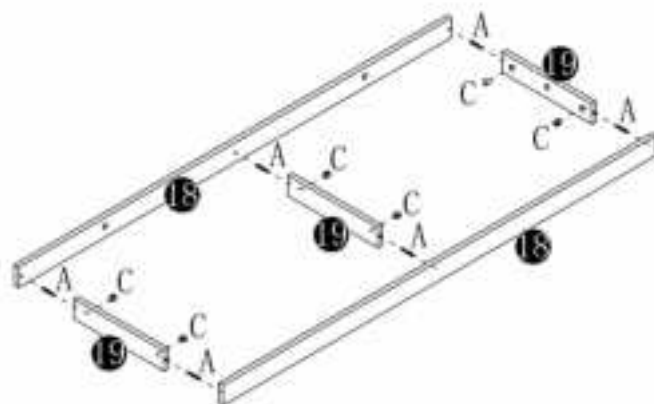
9



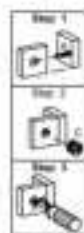
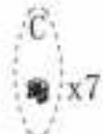
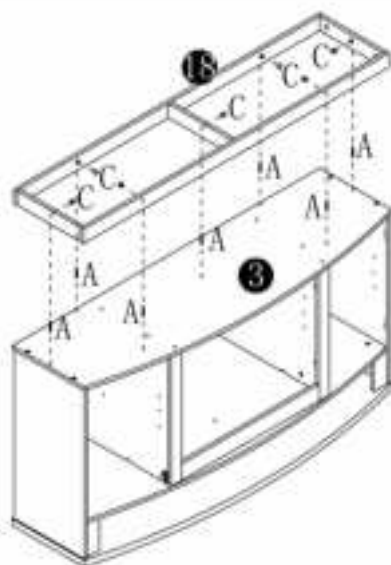
10



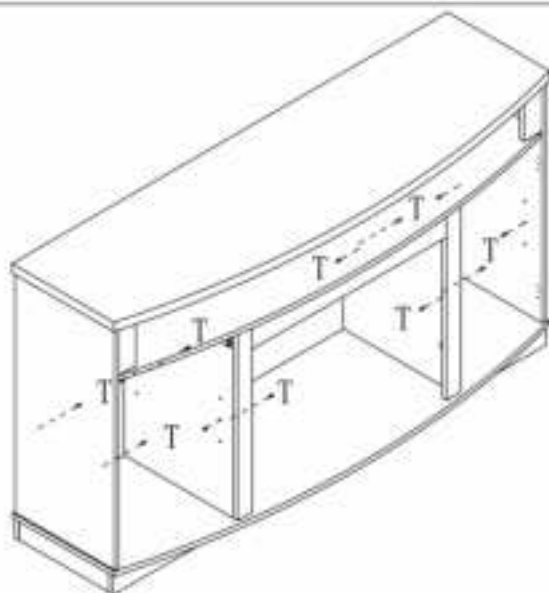
11



12

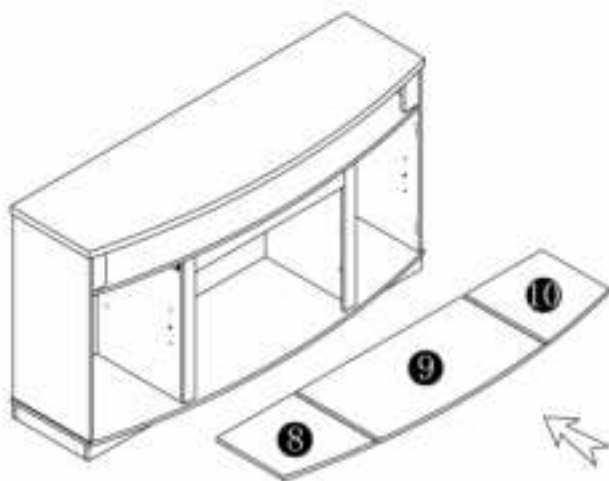


13

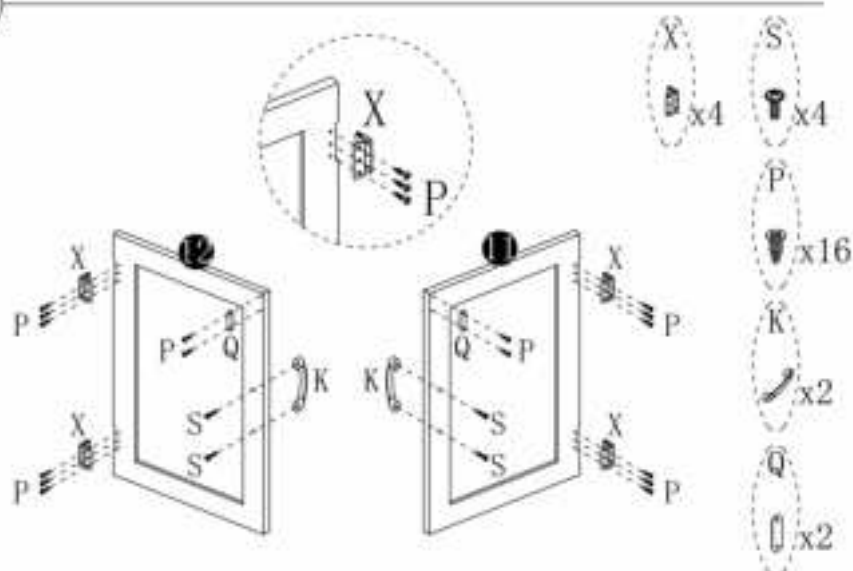


T x12

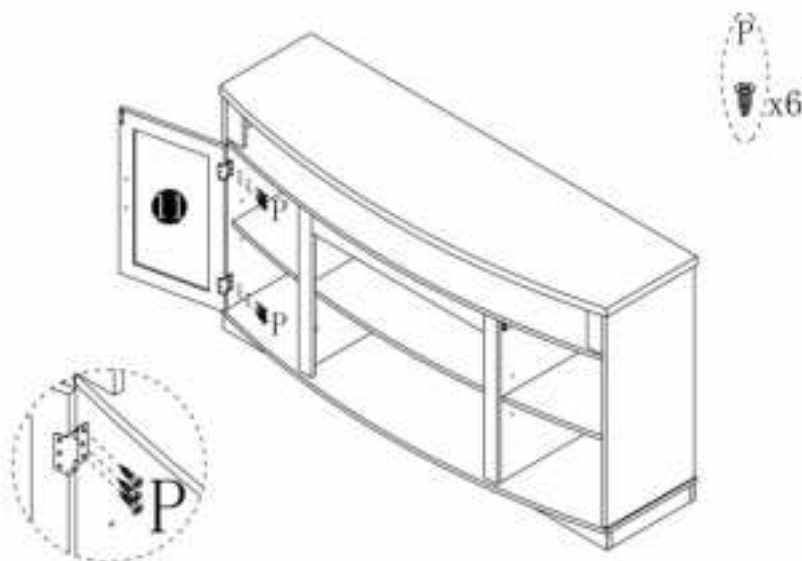
14



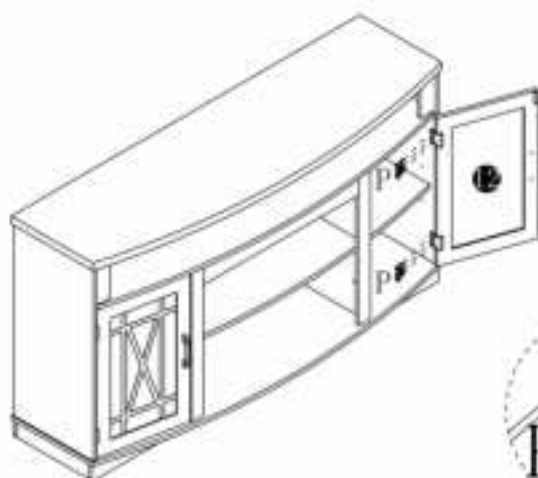
15



16

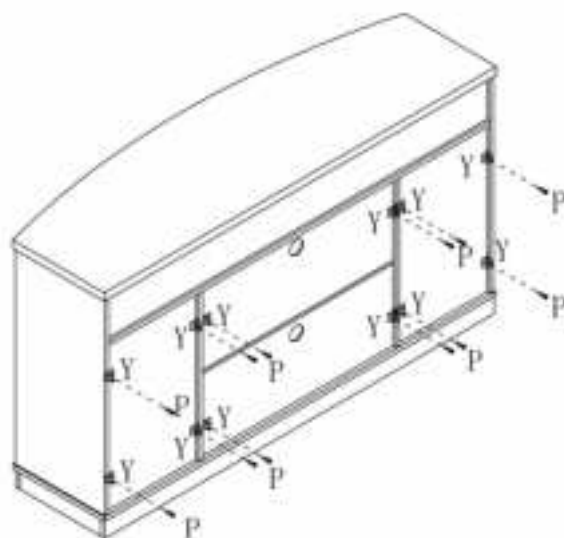


17



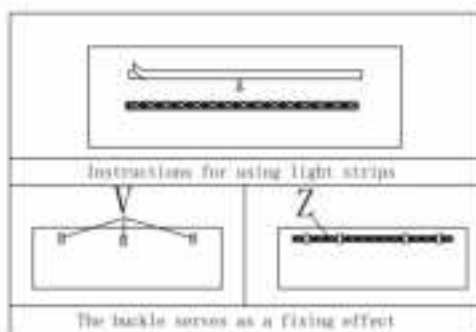
P
x6

18

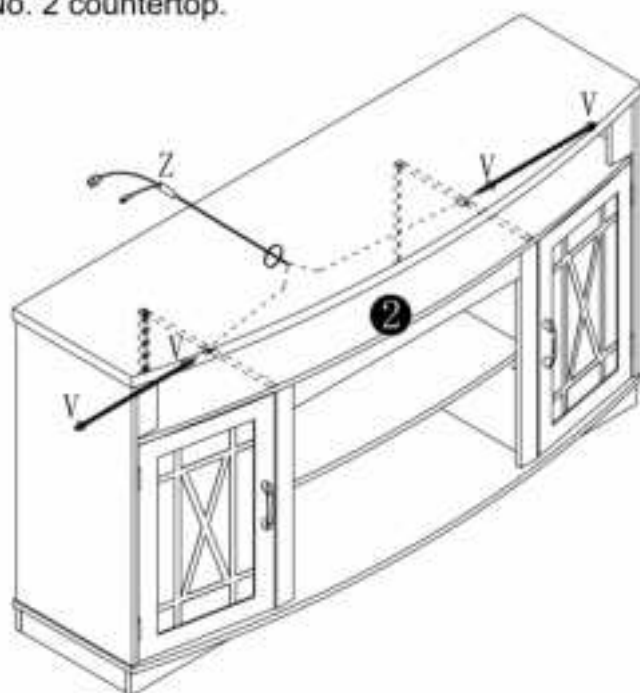


Y
x12
P
x12

19



The light strips are installed under the table No. 2 countertop.



PRODUCT PARAMETER

Model	C250034D-01
Power	Input: DC 5-24V, 6000mA (Via Strip Light)
Safe Loading Weight	300 lbs
TV Size	65 " Max
Colour	Gray
Product Size	1500*450*820 mm

Manufacturer: Shanghaimuxinmuyeyouxiangongsi

Address: Shuangchenglu 803nong11hao1602A-1609shi, baoshanqu, shanghai 200000 CN.

Imported to AUS: SIHAO PTY LTD. 1 ROKEVA STREETEASTWOOD NSW 2122 Australia

Imported to USA: Sanven Technology Ltd. Suite 250, 9166 Anaheim Place, Rancho Cucamonga, CA 91730

UK	REP
-----------	------------

YH CONSULTING LIMITED. C/O YH Consulting
Limited Office 147, Centurion House, London
Road, Staines-upon-Thames, Surrey, TW18 4AX

EC	REP
-----------	------------

E-CrossStu GmbH
Mainzer Landstr.69,
60329 Frankfurt am Main.

