



# USB DISPLAY ADAPTER

QUICK INSTALLATION GUIDE

JUA210 / JUA230 / JUA250

# GETTING STARTED

## Installation on Windows

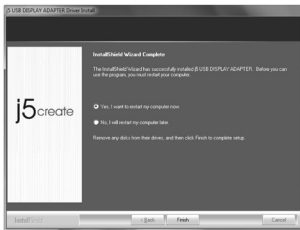
1. Insert the Driver CD into the drive; the setup program should launch automatically.
  - **Make sure that the USB Display Adapter is NOT connected to your host computer.**
2. Executing the Setup.exe application will launch the following screen. Click "**Next**" to continue.



\*Driver download is available at [www.j5create.com](http://www.j5create.com) in "support > download" area.

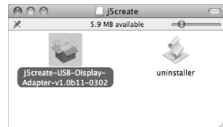


3. When the installation is complete, select **“Yes, I want to restart my computer now”** and click **“Finish”** to restart.



## Installation on MAC (Snow Leopard)

1. Insert the Driver CD into the CD-ROM drive and run the **.dmg** file to draw drivers.
  - **Make sure that the USB Display Adapter is NOT connected to your host computer.**



\*Driver download is available at [www.j5create.com](http://www.j5create.com) in “support > download” area.

2. Click **“Continue”** to proceed

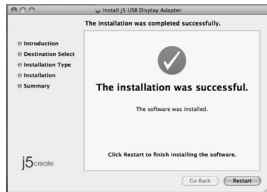


3. Type your password then click **“OK”**.



It will take few minutes to process.

4. Click **“Restart”** to complete



## DEVICE HARDWARE INSTALLATION



1. After the computer has rebooted, connect the external display device to the VGA/DVI/HDMI connector of the **USB Display Adapter**.
2. Connect the **USB Display Adapter** into a USB 2.0 port on the host computer.
3. Software processing will take a few minutes. After the software processing is complete you will be ready to use the **USB Display Adapter**.

### \*Multi-USB Display Adapter Installation

If you are going to install more **USB Display Adapters**, please repeat the hardware installation and then reboot the computer.

## DISPLAY FUNCTION INSTRUCTIONS

### Display Resolution

Select the resolution you want on the display device.

### Display Orientation

Turn the connected display device



\* This function is not available on MAC

### Display Mode

#### Extended mode



#### Mirror mode

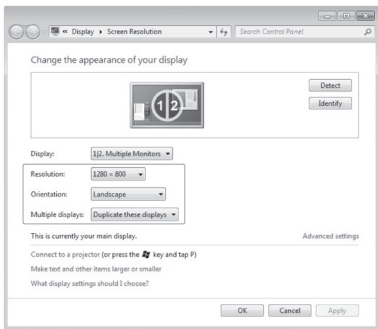


#### Primary mode



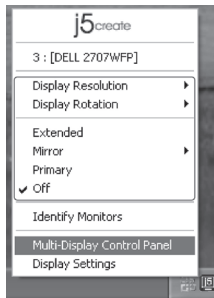
## Display Setting on Windows 7

Right click on the desktop and go to **"Screen Resolution"**




## Display Setting on Windows Vista/XP

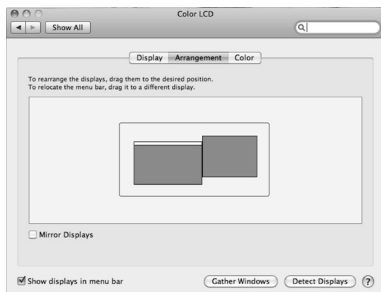
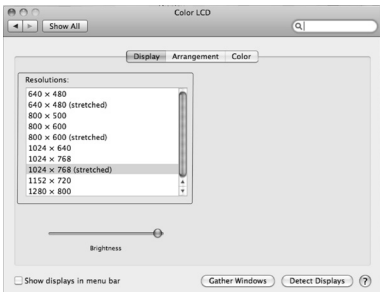
Right click on the icon (  ) on the lower right-hand side of the toolbar.



## Display Setting on MAC (Snow Leopard).

Go to (  ) and then **"System Preferences"**.  
Choose the **"Display"** or **"Arrangement"** tab to adjust.

For complete instructions on Functions please refer to the User Manual.





## Required Environment

- Microsoft Windows 7, Vista, XP (32-bit or 64-bit)
- Mac OS X v10.6 (Snow Leopard) / v10.7 (Lion)
- Available USB 2.0 port
- Minimum System Requirements

QTY	1~2 Dongles	3~4 Dongles
<b>CPU</b>	Intel / AMD Dual core 1.8 GHz or above	Intel / AMD Quad core 2.4 GHz or above
<b>RAM</b>	2 GB or Higher	4 GB or Higher
<b>USB</b>	Independent power supply was required when using the USB HUB to connect multiple dongles.	

- This device is prioritized for 'Office Application' not for 'Home Entertainment', only one monitor for full screen DVD playback is recommended.

## Package Contents

- USB Display Adapter
- Driver CD with E-Manual
- Quick Installation Guide

## Regulatory Compliance

- FCC / CE / C-Tick / VCCI

## Disclaimer

Information in this document is subject to change without notice. The manufacturer does not make any representations or warranties (implied or otherwise) regarding the accuracy and completeness of this document and shall in no event be liable for any loss of profit or any commercial damage, including but not limited to special, incidental, consequential, or other damage. No part of this document may be reproduced or transmitted in any form by any means, electronic or mechanical, including photocopying, recording or information recording and retrieval systems without the expressed written permission of the manufacturer.

# STOP !!

If you have any issues using this product, please try the instructions below before returning this product to the store.

## 1. The User Manual

Contains detailed instructions and a troubleshooting section, many common issues can be easily resolved by reading the user manual.

## 2. Online Support

Please visit the j5 create website ([www.j5create.com](http://www.j5create.com)) to find the latest software for your device. If you still experience issues, you can submit a trouble ticket through j5 web support. Your ticket will be handled within 24 hours. We stand behind our products and it is our goal to provide you world class support.

## 3. Telephone Support

Please call us @ 888-689-4088 and one of our support technicians will be very happy to assist you.

## TECHNICAL SUPPORT

Toll free number: 888-689-4088

Business Hours: Mon. – Fri. 10:00 a.m – 6:00 p.m E.S.T

Email: [service@j5create.com](mailto:service@j5create.com)