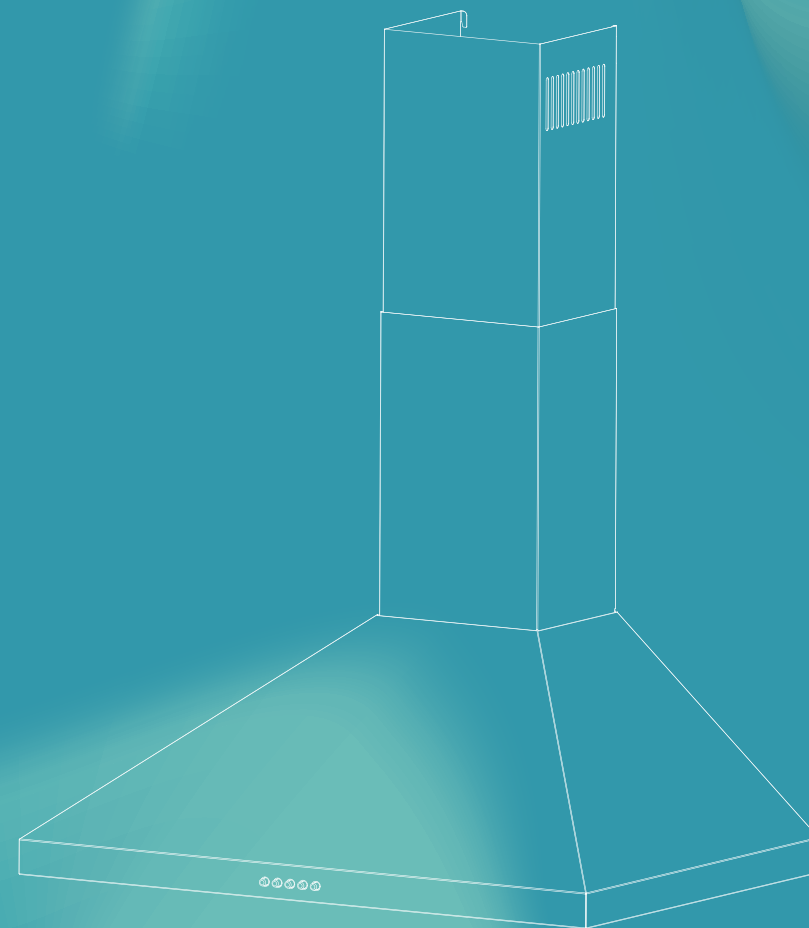


SKU: ZX-RH-03

# RANGE HOOD



Congratulations on purchasing your new product. To ensure proper operation, please read this instruction manual carefully before using this product. Keep this manual in a safe place for future reference.

 **Email:**  
[support@homyd.com](mailto:support@homyd.com)

# Congratulations

Dear Customer:

Welcome to our family. Thank you for purchasing our range hood.

Our goal is to provide you with superior service. If there is anything missing from or wrong with your order, or if you have any questions about using our range hood, PLEASE contact us.

Email: [support@homyd.com](mailto:support@homyd.com)

Our team is available 24/7 to address your questions, comments, and concerns. Your satisfaction is our ultimate goal. We want to make everything right so you'll share your positive experience with other shoppers on Amazon.

If you experience any problems, please send an email to [support@homyd.com](mailto:support@homyd.com).

## I Before You Begin

### INSTALLERS -Start Here

**Safety Instructions are on pages 4 and 5 and Installation Instructions are on pages 8 to 14.**

Please perform these steps:

1. Read the safety instructions.
2. Read all instructions in the Installation section of this manual BEFORE installing the range hood.
3. Remove all packing materials.
4. When finished, make sure to leave these instructions with the consumer.
5. Installation is to be done by a qualified technician only. However, the ultimate responsibility for proper installation falls to the owner.
6. Product failure due to improper installation is not covered under the Warranty.



### CONSUMERS -Start Here

**Safety Instructions are on pages 4 and 5 and Operating Instructions are on pages 15 to 17.**

Please perform these steps:

1. Read the safety instructions.
2. Read all instructions in the manual BEFORE operating the range hood.
3. Remove all packing materials.
4. Installation is to be done by a qualified technician only. However, the ultimate responsibility for proper installation falls to the owner.
5. Product failure due to improper installation is not covered under the Warranty.

## CONTENT

Safety Precaution	1
Parts Diagram	2
Installation Instructions	4
Air Outlet Installation Method	5
Installation	6-7
Filter Installation	8
Operation	9
Maintenance	10-11
Product Information	12
Trouble-Shooting	13
Environmental Protection	13
Warranty and service	14

## I Safety Precaution

- Never let the children operate the machine,
- The cooker hood is for home use only, not suitable for barbecue, roast shop and other commercial purpose.
- Clean the cooker hood according to the instruction manual and keep the unit from danger of burning. There is a fire risk if cleaning is not carried out in accordance with the instructions.
- Please keep the kitchen room a good convection before connecting this appliance; Please check that the power supply cord is undamaged, A damaged supply cord must be replaced by qualified service personnel only.
- Regulations concerning the discharge of air have to be fulfilled,
- This appliance can be used by children aged from 8 years and above also the persons with reduced physical, sensory or mental capabilities or lack of experience and knowledge if they have been given supervision or instruction concerning use of the appliance in a safe way and understand the hazards involved. Children shall not play with the appliance. Cleaning and user maintenance shall not be made by children without supervision,
- If the supply cord is damaged, it must be replaced by the manufacturer, its service agent or similarly qualified persons in order to avoid a hazard.



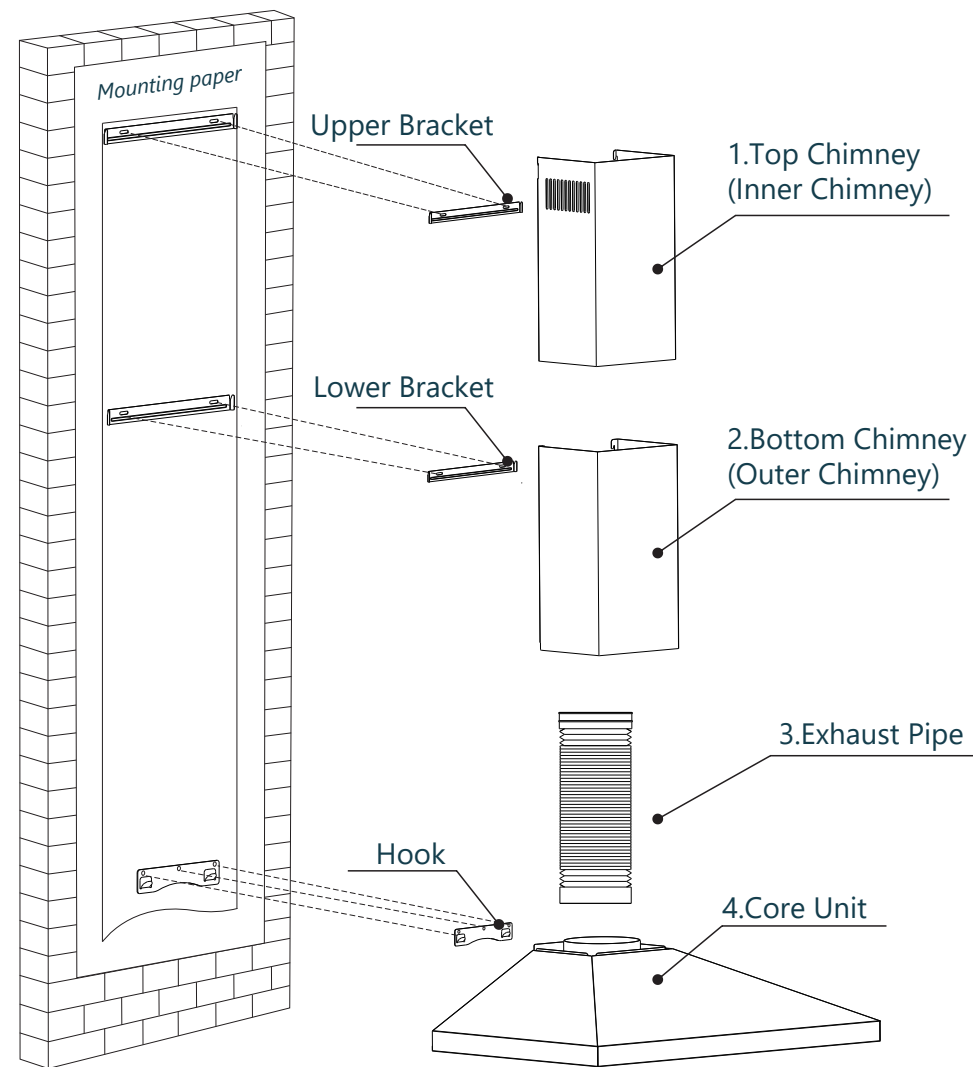
### CAUTION:

**Accessible parts may become hot when used with cooking appliance.**

#### Electrical Shock Hazard

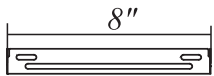
Only plug this unit into a properly earthed outlet. If you have doubts, seek advice from a suitably qualified engineer.

## I Parts Diagram

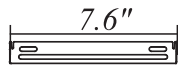


## I Parts Diagram

### Parts Supplied



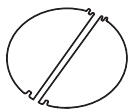
Upper Chimney Bracket



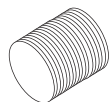
Lower Chimney Bracket



Range Hood Hook



Dampers



Flexible Pipe



St4x30



$\phi 5 \times \phi 8$



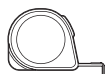
St3x10

(2 screws extra)

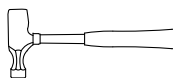
### Tools Required



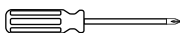
Pencil



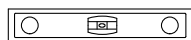
Measuring tape



Hammer



Screwdriver



Level



Electric drill

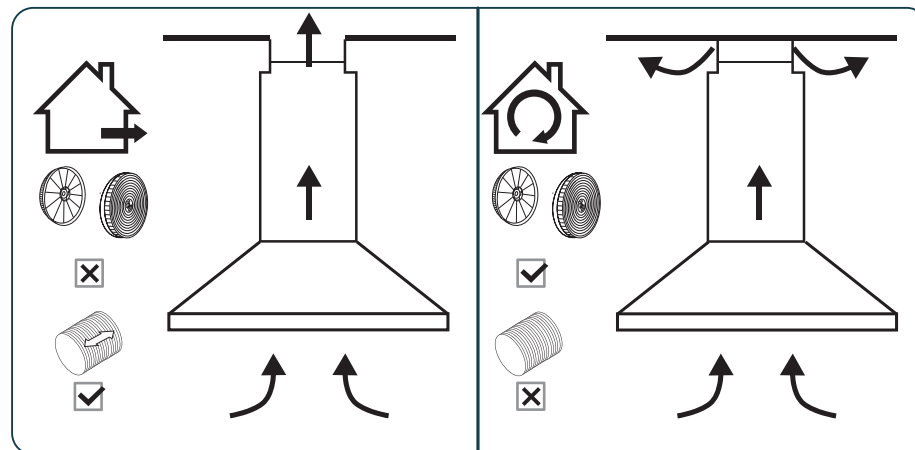


Duct Tape



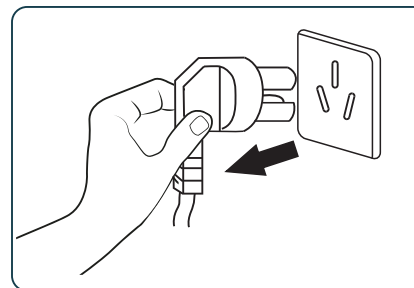
Gloves

## I Installation Instructions

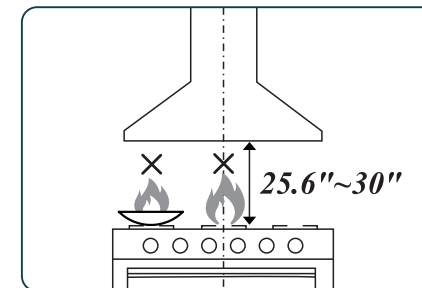


DUCTED OPTION

RECIRCULATION OPTION



b. Before installation, turn the unit off and unplug it from the outlet.



c. The cooker hood should be placed at a distance of 25.6"~30" above the cooktop for the best effect.

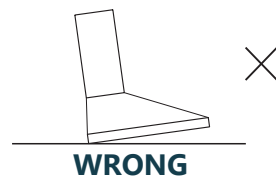
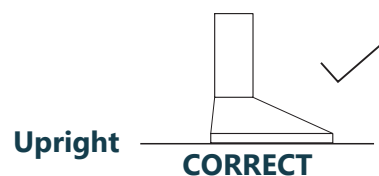
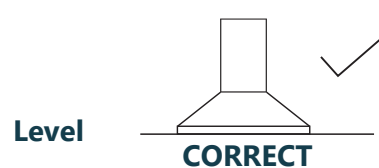
**Note:** The power cord is 36 (in) L. It is not recommended that user replace the power cord or cut the power cord.



**Note**

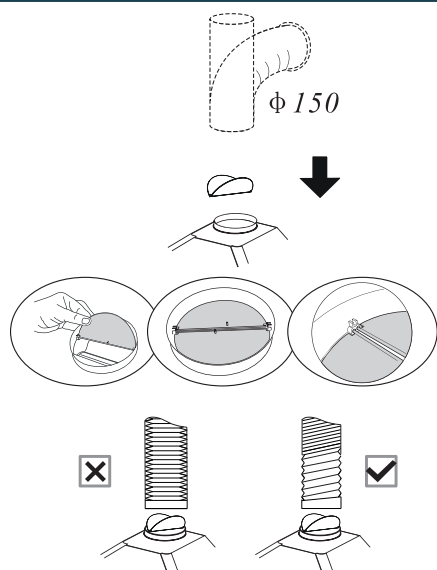
No open flames directly approach to the range hood.

# Installation Instructions



After hanging the unit on the wall, ensure the range hood is straight and horizontal.

## Air Outlet Installation Method



**Installation method for 150mm diameter pipe:** insert the one-way -value as the pic and fix the duct.

**Attention:** The bump of the one- way-value must be upward.

The pipe near the air outlet need to be fully extended.

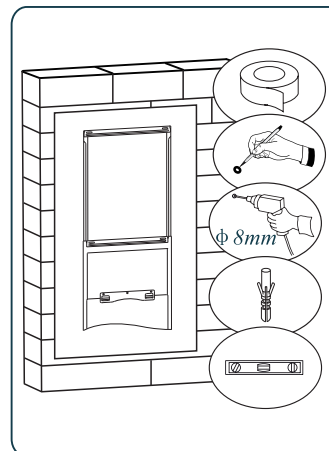
# Installation



**Note**

Please connect the power supply to test and confirm that the power is on before installing this wall mount range hood.

## Refer to the installation instructions:



Prepare pencil, electric drill, plastic wall anchors and level before installation.

Recommended installation height: 27.6"

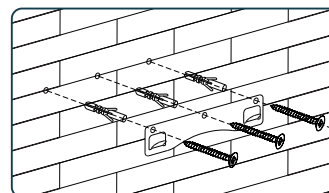
Required minimum installation height: 25.6"

1. Stick the installation template on the wall.
2. Drill the holes which showing on the template.

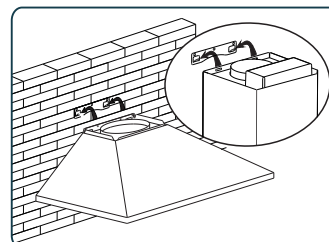


**CAUTION :**

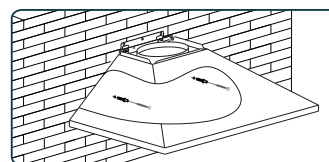
**Peel off the paper after drilling the holes.**  
The chimney covers height can be adjusted from 500mm to 750mm.



Drill 3 x 8mm holes to accommodate the bracket. Screw and tighten the hook onto the wall with the screws & plastic wall anchors provided.

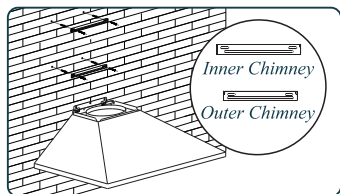


Lift the cooker hood and hang onto the wall hook.

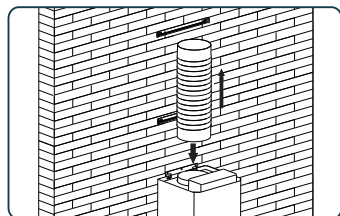


Need to drill 2x8mm extra holes & fixing screws & plastic wall anchors before installation.

## I Installation



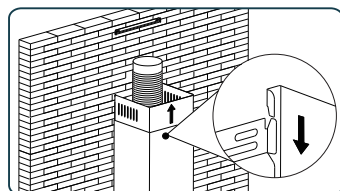
Mark the position and drill 2 holes for each chimney bracket and tighten the bracket with screws.



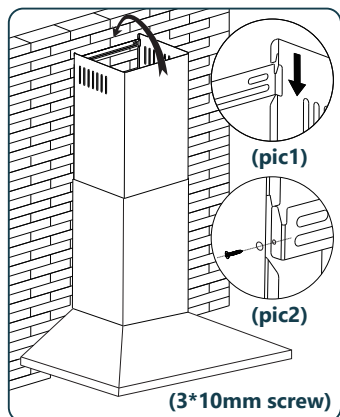
Fix the one-way-value to the air outlet of the cooker hood, and then attached the pipe onto the air outlet as picture.



**The longer bracket is upper  
Note chimney bracket**



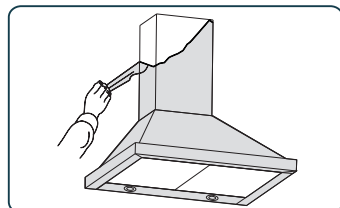
Put the upper chimney into lower chimney .  
Then pulling out the upper chimney upwards.  
Adjust to reach the height required.



There are 2 methods for installing the chimney cover. Please check the below pic for reference.

1.After drilling the 2 holes and fixing the bracket, hang the chimney cover by matching the both side lock.(Pic1)

2.After drilling the 2 holes and fixing the bracket, install the chimney cover by locking with 2 screws in both side holes.(Pic2)



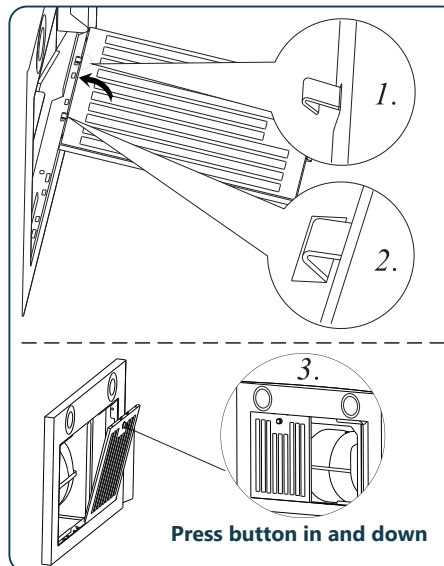
**CAUTION :**

**BEFORE USE**

Please remove the white/blue protective film on the rangehood, chimney covers and baffle filters.

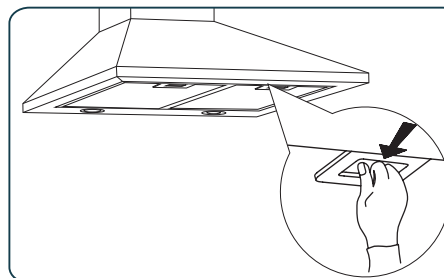
## I Filter Installation

### Baffle Filter:

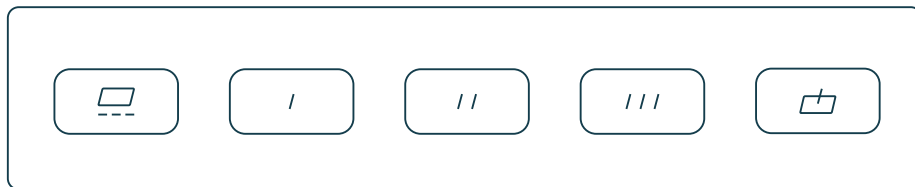


- 1.Line up filter hooks to holes in unit.
2. Lift filter for hooks to go into holes.
3. Lock Filter into place.

### Aluminium Filter:



## I Operation



Light Key

Press one time for turning the lights on, press another time to turn the lights off



Low Speed Key



Middle Speed Key



High Speed Key



ON/OFF key

Press this key to turn power/motor on and off.

## I Maintenance

**Before cleaning switch the unit off and pull out the plug.**

### I. Regular Cleaning

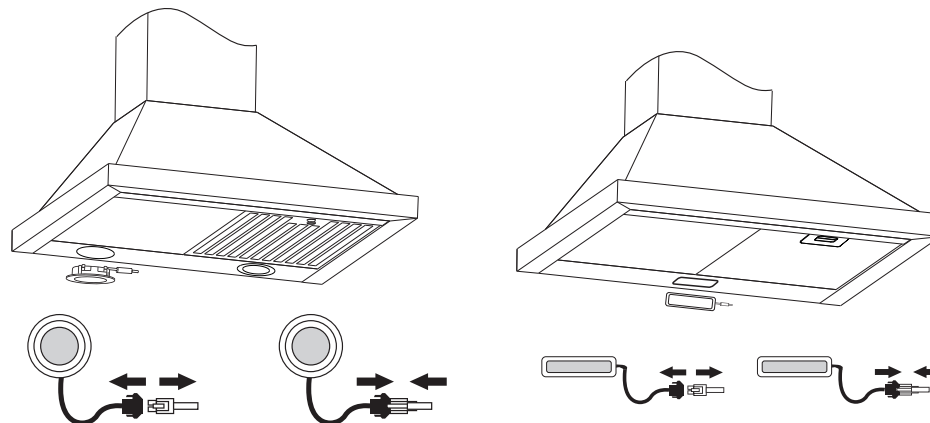
Use a soft cloth moistened with hand-warm mildly soapy water or household cleaning detergent. Never use metal pads, chemical, abrasive material or stiff brush to clean the unit.

### II. LED Light Replacement

Switch the unit off and unplug the appliance.

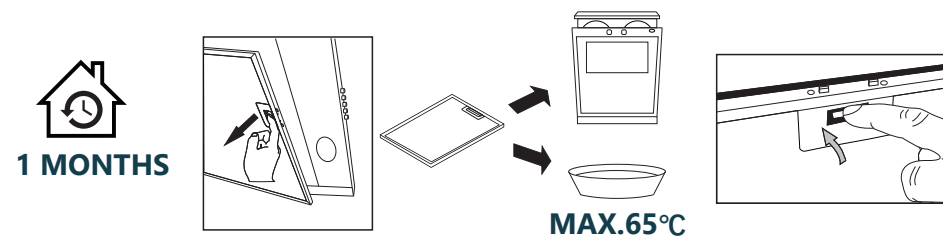
#### **CAUTION: LAMP UNIT MAY BE HOT!**

WAIT UNTIL THE UNIT IS COOL. BEFORE attempting to replace the LED lamps make sure the unit is powered off and UNPLUGGED.



### III. Filter and charcoal filters replacement

In order to install the carbon filter, the grease filter should be detached first. Press the lock and pull it downward.





## I Maintenance

### Filters:

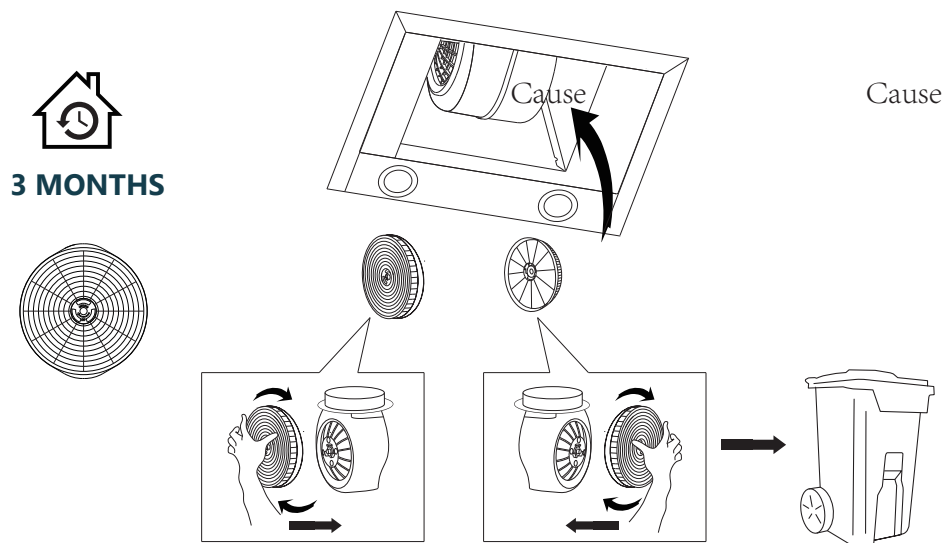
To avoid fires, clean thoroughly once a month or whenever the display pilot lights up (if fitted). To do so, remove the filters and soak in hot water and detergent for an hour. If using a dishwasher, position the filters vertically to improve the cleaning process.

### IV. Charcoal filter life time:

Suggest changing to new one every 3 months (According to different kitchen condition, the life time of charcoal filter might be longer or shorter than 3 months).

### Installation:

Fix carbon filter into the unit and turn it in as below picture shows. Repeat the same on the other side.



### BEFORE USE

1. Make sure the filter is securely locked. Otherwise, it would loosen and cause abnormal noise and danger.
2. Using charcoal filter would reduce the air flow of the range hood.

## I Product Information

<b>Product Name:</b>	Range Hood
<b>Product Model:</b>	ZX-RH-03
<b>Rated Voltage:</b>	110-120V/60hz
<b>Rated Power:</b>	193W

## I Trouble-Shooting

Fault	Cause	Solution
Light on, but fan does not work	The fan blade is jammed.	Switch off the unit and repair by qualified service personnel only.
	The motor is damaged.	
Both light and fan do not work	Light is burnt out.	Replace the LED light with correct rating.
	Power cord is loose.	Plug into the power supply again.
Serious Vibration of the unit	The fan blade is damaged.	Switch off the unit and repair by qualified service personnel only.
	The fan motor is not fixed tightly.	
	The unit is not hung properly on the bracket.	Take down the unit and check whether the bracket is in proper location.
Suction performance not good	Too far distance between the unit and the cooktop.	Readjust the distance between 25.6"-30"

## Environmental Protection

Waste electrical products should not be disposed of with household waste.

Please recycle where facilities exist.

Check with your Local Authority or retailer for recycling advice.



## I Warranty and service

This product is covered by a 12-month product and warranty from the date of initial purchase in case of any problems, please contact the Customer Service Center via the contact information listed in this User Guide.

Our warranty covers replacement products by repairing or replacing any defective parts and labor necessary to bring it up to its original specifications, and we can provide a replacement product instead of repairing the defective product.

Our sole obligation under this warranty is limited to such repair or replacement.

Any claim will require a receipt showing the date of purchase, so please keep all receipts in a safe place. While greatly appreciated, product registrant is not required to activate any warranty and product registration does not eliminate the need for proof of original purchase.

The warranty will be voided if repairs are performed by a non-authorized third party and/or if spare parts other than those provided by us are used.

These are the general terms of our warranty service, but we always urge our customers to contact us ([support@homyd.com](mailto:support@homyd.com)) with any questions they may have, regardless of the terms of the warranty.