

HISTORY INFORMATION FOR THE FOLLOWING MANUAL:

REPAIR MANUAL

RB1FK Chassis

Segment: BA



KDL-40R450A

<i>MODEL</i>	<i>COMMANDER</i>	<i>DESTINATION</i>
KDL-40R450A	RM-YD092	US/CND/LA/MX
KDL-46R450A	RM-YD092	CND/LA/MX

Version	Date	Subject
1.0	01/28/2013	Original Manual Release Date.

LCD Digital Color TV

SONY[®]

9-883-499-01

TABLE OF CONTENTS

Cautions and Warnings	ii	Section 4 - Exploded View/Part Number Information	20
Section 1 - Specifications and Layouts	1	KDL-40R450A/46R450A	20
Specifications	1	Connectors	21
Board Layout	2	KDL-40R450A.....	21
KDL-40R450A.....	2	KDL-46R450A.....	21
KDL-46R450A.....	2	Screws.....	22
Wire Dressing	3	Section 5 - Accesories Part Number Information	23
KDL-40R450A.....	3	Accessories and Packaging	23
KDL-46R450A.....	3	Miscellaneous.....	23
Section 2 - Troubleshooting	4	Optional Accessories	23
Diagnosing the Error	4	Remote Commander	23
Viewing the Self Check Diagnosis History	4	Appendix A: Encryption Key Components	A-1
Triage Chart.....	5		
Flowcharts and Diagrams.....	6		
Overall Block Diagram	6		
Power and Control Block Diagram.....	7		
No Power Flowchart	8		
Standby LED Blinking Flowchart	9		
No Video Flowchart	10		
Video Distorsion Flowchart	11		
Section 3 - Repair Information	12		
Repairing the TV.....	12		
Removing the Table-Top Stand.....	12		
Removing the Cover Under	12		
Replacing the Main Board	13		
Replacing the Power Supply Board.....	18		
Removing the Switch Unit	18		
Removing the Bezel	19		

CAUTIONS AND WARNINGS


CAUTION!!

These servicing instructions are for use by qualified service personnel only. To reduce the risk of electric shock, do not perform any servicing other than that contained in the operating instructions unless you are qualified to do so.

WARNING!!

An isolation transformer should be used during any service to avoid possible shock hazard, in case of live chassis.

SAFETY-RELATED COMPONENT WARNING!!

There are critical components used in LCD color TVs that are important for safety. These components are identified with shading and  mark on the schematic diagrams and the parts list. It is essential that these critical parts be replaced only with the part number specified in the parts list to prevent electric shock, fire or other hazard.

NOTE: Do not modify the original design without obtaining written permission from the manufacturer or you will void the original parts and labor warranty.

ATTENTION!!

For safety reasons, component level repair of the Power Supply Boards and/or the Inverter Boards is prohibited.


ATTENTION!!

Ces instructions de service sont à l'usage du personnel de service qualifié seulement. Pour prévenir le risque de choc électrique, ne pas faire l'entretien autre que celui contenu dans le Mode d'emploi à moins que vous soyez qualifié faire ainsi.

ALERTE!!

Afin d'éviter tout risque d'électrocution provenant d'un châssis sous tension, un transformateur d'isolement doit être utilisé lors de tout dépannage.

ATTENTION AUX COMPOSANTS RELATIFS A LA SECURITE!!

Les composants identifiés par une trame et par une marque  sur les schémas de principe, les vues explosées et les listes de pièces sont d'une importance critique pour la sécurité du fonctionnement. Ne les remplacer que par des composants Sony dont le numéro de pièce est indiqué dans le présent manuel ou dans des suppléments publiés par Sony. Les réglages de circuit dont l'importance est critique pour la sécurité du fonctionnement sont identifiés dans le présent manuel. Suivre ces procédures lors de chaque remplacement de composants critiques, ou lorsqu'un mauvais fonctionnement suspecte.

ATTENTION!!

Pour des raisons de sécurité, Interdire de réparer ou remplacer les composants dans les blocs d'alimentation et/ou sur les modules d'inverseur.

CAUTIONS AND WARNINGS

SAFETY CHECK-OUT

After correcting the original service problem, perform the following safety checks before releasing the set to the customer:

1. Check the area of your repair for unsoldered or poorly soldered connections. Check the entire board surface for solder splashes and bridges.
2. Check the interboard wiring to ensure that no wires are “pinched” or touching high-wattage resistors.
3. Check that all control knobs, shields, covers, ground straps and mounting hardware have been replaced. Be absolutely certain that you have replaced all the insulators.
4. Look for unauthorized replacement parts, particularly transistors, that were installed during a previous repair. Point them out to the customer and recommend their replacement.
5. Look for parts which, though functioning, show obvious signs of deterioration. Point them out to the customer and recommend their replacement.
6. Check the line cords for cracks and abrasion. Recommend the replacement of any such line cord to the customer.
7. Check the antenna terminals, metal trim, “metallized” knobs, screws and all other exposed metal parts for AC leakage. Check leakage as described in “Leakage Test”.

LEAKAGE TEST

The AC leakage from any exposed metal part to earth ground and from all exposed metal parts to any exposed metal part having a return to chassis, must not exceed 0.5 mA (500 microamperes). Leakage current can be measured by any one of three methods.

1. A commercial leakage tester.
Follow the manufacturers’ instructions provided with the tester.
2. A battery-operated AC milliammeter.

3. Measuring the voltage drop across a resistor by means of a VOM or battery-operated AC voltmeter. The “limit” indication is 0.75 V, so analog meters must have an accurate low voltage scale. Nearly all battery-operated digital multimeters that have a 2 VAC range are suitable. (see Figure A)

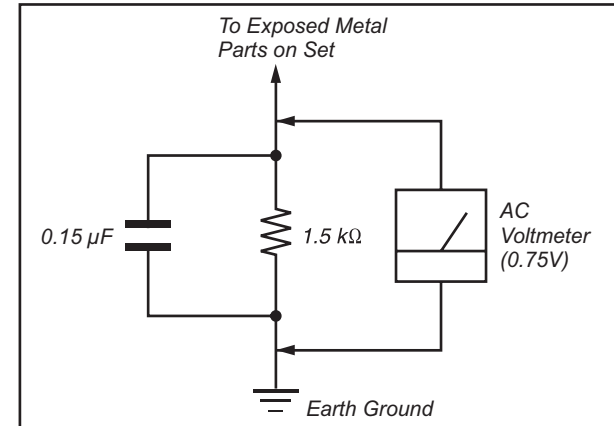


Figure A. Use an AC voltmeter to check AC leakage.

HOW TO FIND A GOOD EARTH GROUND

The cover-plate retaining screw on most AC outlet boxes is at earth ground. Verify the AC outlet box retaining screw ground by connecting a 60W to 100W incandescent (not a neon or fluorescent lamp) between the hot side of the receptacle and the retaining screw. Try both slots, if necessary, to locate the hot side on the line; the lamp should light at normal brilliance if the screw is at ground potential. (see Figure B)

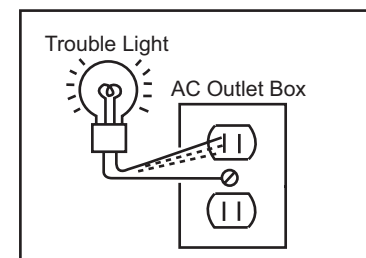


Figure B. Checking for earth ground.

SECTION 1 - SPECIFICATIONS AND LAYOUTS

SPECIFICATIONS

System	
Television system	NTSC: American TV Standard ATSC (8VSB terrestrial): ATSC Compliant 8VSB QAM on cable: ANSI/SCTE 07 2000 (Does not include CableCARD functionality)
Channel coverage	Analog Terrestrial: 2 - 69 / Digital Terrestrial: 2 - 69 Analog Cable: 1 - 135 / Digital Cable: 1 - 135
Panel system	LCD (Liquid Crystal Display) Panel, LED Backlight
Speaker output	8 W + 8 W
Input/Output jacks	
CABLE/ANTENNA	75-ohm external terminal for RF inputs
VIDEO IN	VIDEO: 1 Vp-p, 75 ohms unbalanced, sync negative AUDIO: 500 mVrms (Typical) / Impedance: 47 kilohms
COMPONENT IN	YPBPR (Component Video): Y: 1.0 Vp-p, 75 ohms unbalanced, sync negative / Pb: 0.7 Vp-p, 75 ohms PR: 0.7 Vp-p, 75 ohms / Signal format: 480i, 480p, 720p, 1080i, 1080p AUDIO: 500 mVrms (Typical) / Impedance: 47 kilohms
HDMI IN 1 (ARC) HDMI IN 2/MHL	HDMI: Video: 480i, 480p, 720p, 1080i, 1080p, 1080/24p MHL: Video: 480i, 480p, 720p, 720/30p, 1080i, 1080/30p, 1080/24p Audio: Two channel linear PCM 32, 44.1 and 48 kHz, 16, 20 and 24bits, Dolby Digital PC Input
AUDIO OUT	500 mVrms (typical)
DIGITAL AUDIO OUT (OPTICAL)	PCM/Dolby Digital Optical Signal
USB	Photo, Music and Video

Model name	KDL-46R450A	KDL-40R450A
Power and others		
Power requirement	110-240 V AC, 50/60 Hz (USA/Canada/Mexico 120 V AC, 60 Hz)	
Power consumption		
in use	109 W	89 W
in standby	Less than 0.2 W with 120 VAC and less than 0.3 W with 240 VAC	
Screen size*		
(measured diagonally)	46	40
(inches)		
(cm)	116,8	101,6
Display resolution	1,920 dots (horizontal) × 1,080 lines (vertical)	
Speaker/Full range (2)	(mm)	40 × 100
	(inches)	(1 5/8 × 4)
Dimensions* with stand	(mm)	1053 × 641 × 181
	(inches)	41 1/2 × 25 1/4 × 7 1/4
without stand	(mm)	1053 × 622 × 76
	(inches)	41 1/2 × 24 1/2 × 3
wall-mount hole pattern	(mm)	300 × 300
wall-mount screw size	(mm)	M6 (8~12 mm)
		M4 (6.5~10 mm)
Mass*	(kg)	9.4
with stand	(lb)	20.8
without stand	(kg)	9.1
	(lb)	20.1
Supplied accessories	Remote control RM-YD092 (1) / Size AAA batteries (2) / Operating Instructions (1) Quick Setup Guide (1) / Warranty Card (1) / Safety and Regulatory Booklet (1) / Software License (1) Stand installation guide (1) / Table-Top Stand (1 set) / Screws (4) (KDL-46R450A) Screws (2) (KDL-40R450A) / Attachment Parts (2) (KDL-46R450A only)	
Optional accessories	Connecting Cables / Support Belt Kit	

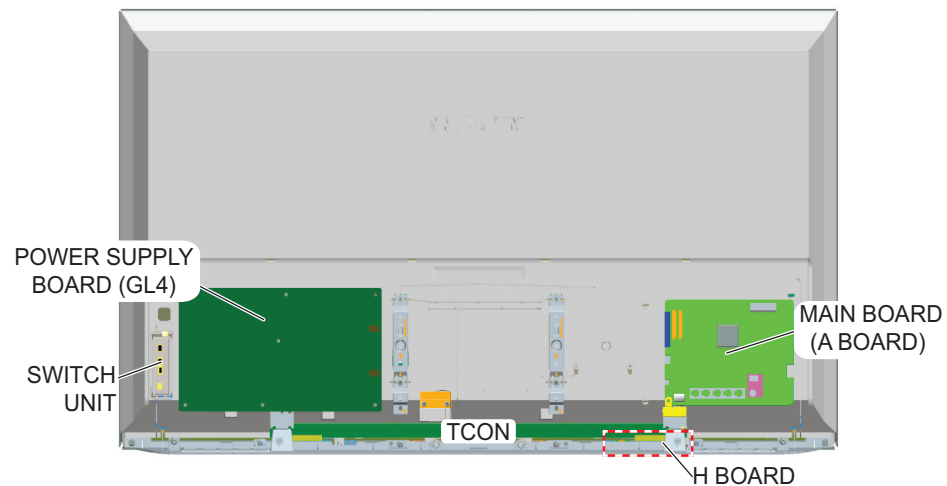
- Optional accessories availability depends on its stock.
- Design and specifications are subject to change without notice.

* Dimensions and mass are approximate values.

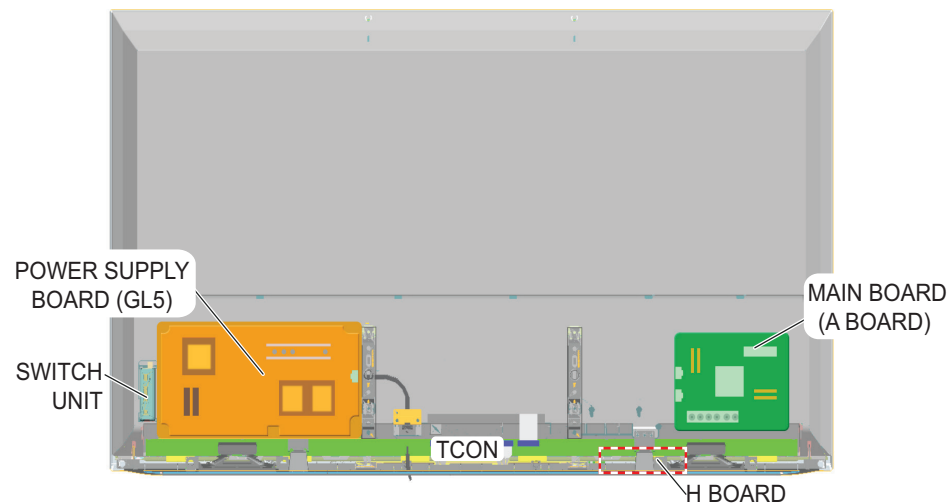
SECTION 1 - SPECIFICATIONS AND LAYOUTS

BOARD LAYOUT

KDL-40R450A



KDL-46R450A



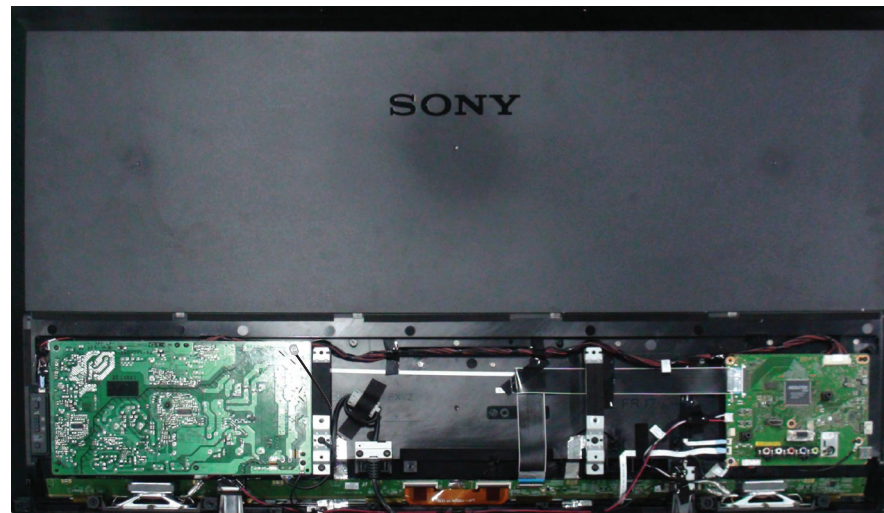
SECTION 1 - SPECIFICATIONS AND LAYOUTS

WIRE DRESSING

KDL-40R450A



KDL-46R450A



SECTION 2 - TROUBLESHOOTING



DIAGNOSING THE ERROR

Before servicing the Television:

- 1. Verify the TV has the symptom the customer indicated.
- 2. Check to see if the latest Software is installed.
 - a. If not, install the latest version.
- 3. Determine the replacement part required.

VIEWING THE SELF CHECK DIAGNOSIS HISTORY

When an error is detected, the Self Check screen records the number of times the error occurred. This is helpful in confirming past occurrences of an error and for determining if an error is intermittent when the customer is not sure what is causing the television to shut down. If the screen displays a “0”, no error has occurred.

- 1. Press **POWER** to turn on the TV and then turn it off again.
- 2. Press the following buttons on the **Remote Commander** within 1 second of each other:



NOTE: This differs from accessing Service Adjustments Mode (Volume +).

SELF CHECK

Back

<<

002	MAIN_POWER	001
003	DC_ALERT1	000
003	AUDIO_PROT	000
004	BALANCER_ERR	000
005	TCON_ERR	000
005	PANEL_ID_NVM_ERR	000
006	BACKLIT	000
007	TEMP_ERR	000

001160002400115

[Home] Exit

Indicates
an error
has occurred

Indicates
no error
has occurred

SAMPLE SELF CHECK DIAGNOSIS PAGE

SECTION 2 - TROUBLESHOOTING

TRIAGE CHART

Use this general Triage Chart to determine what may possibly be causing the error before going out to the customers location.

1. Confirm the symptom from the customer.
2. Select that symptom from the chart.
3. Bring the primary component listed for that symptom.
4. Follow the associated flowcharts in the Training Manual to isolate the board.
5. Chart Color Code.

RED Dot: (Primary) Most likely defective part.

BLUE Triangle: (Secondary) Possible defective part.

Board	Protection Modes				Power	Video			Audio
	2X	3X	5X	6X	Dead set	No Video	Whole Screen Distortion	Isolated Area Distortion	No Audio
MAIN BOARD		●			▲	▲	●		●
POWER SUPPLY	●			●	●				
LCD PANEL								●	
TCON			●			●	▲	▲	

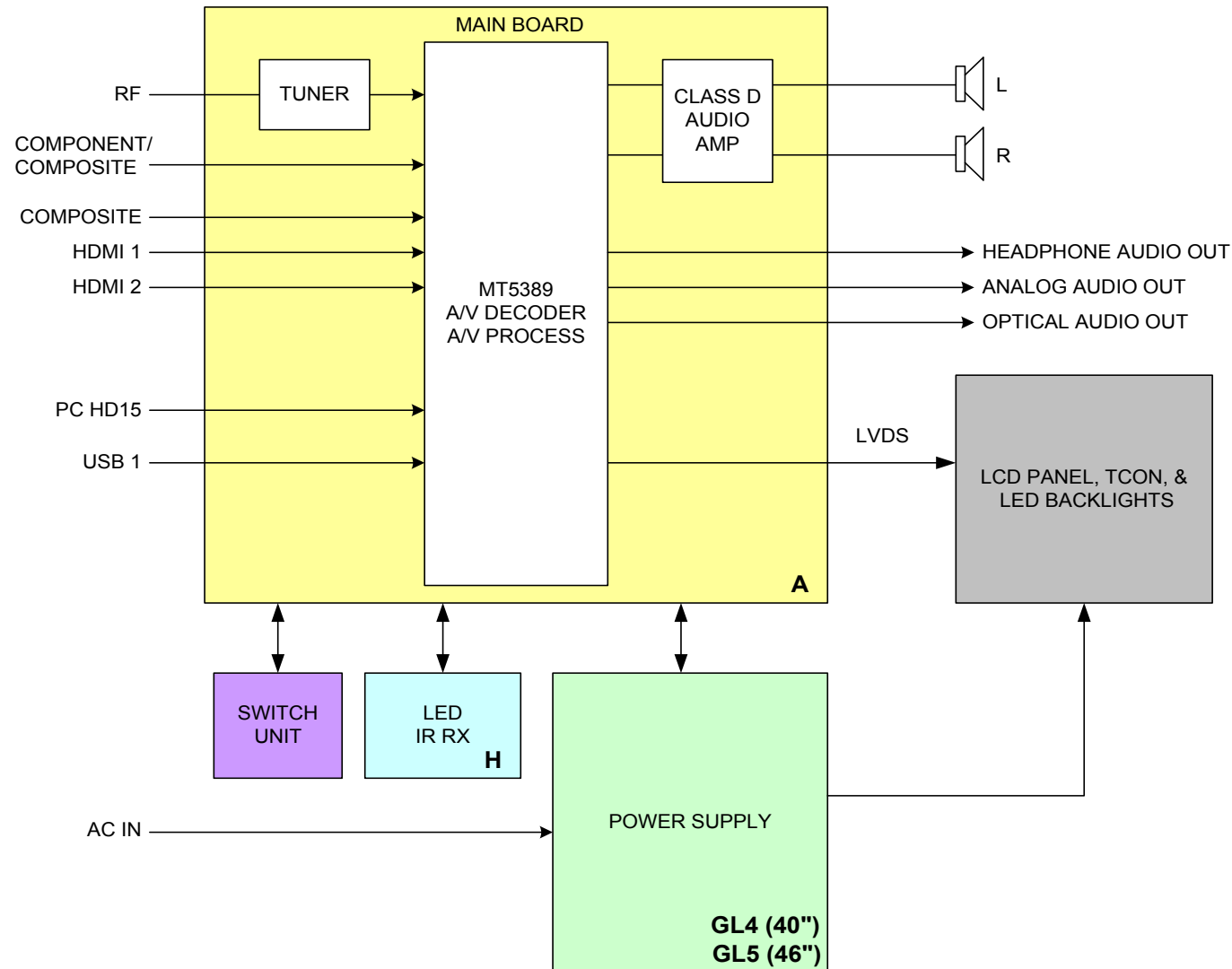
***NOTE:** REFER TO LCD PANEL SERVICE MANUAL IN REFERENCE LIBRARY DATABASE FOR CORRECT REPLACEMENT PARTS BASED ON SERIAL NUMBER.

To access the most recent version of the Triage documents for the models listed in this manual, login into the Sony Authorized Servicer Portal at <http://www.sony.com/asp>.

SECTION 2 - TROUBLESHOOTING

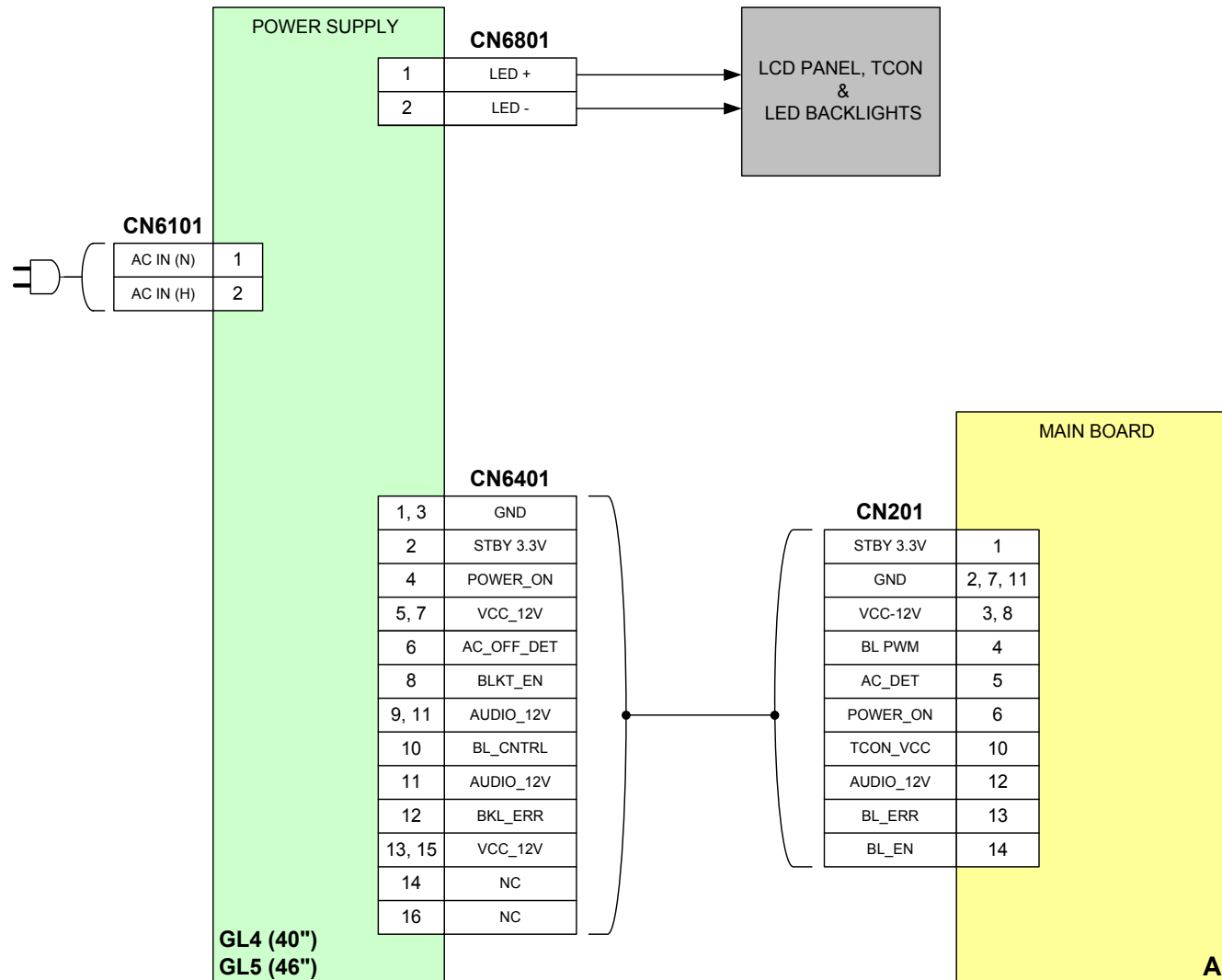
FLOWCHARTS AND DIAGRAMS

OVERALL BLOCK DIAGRAM



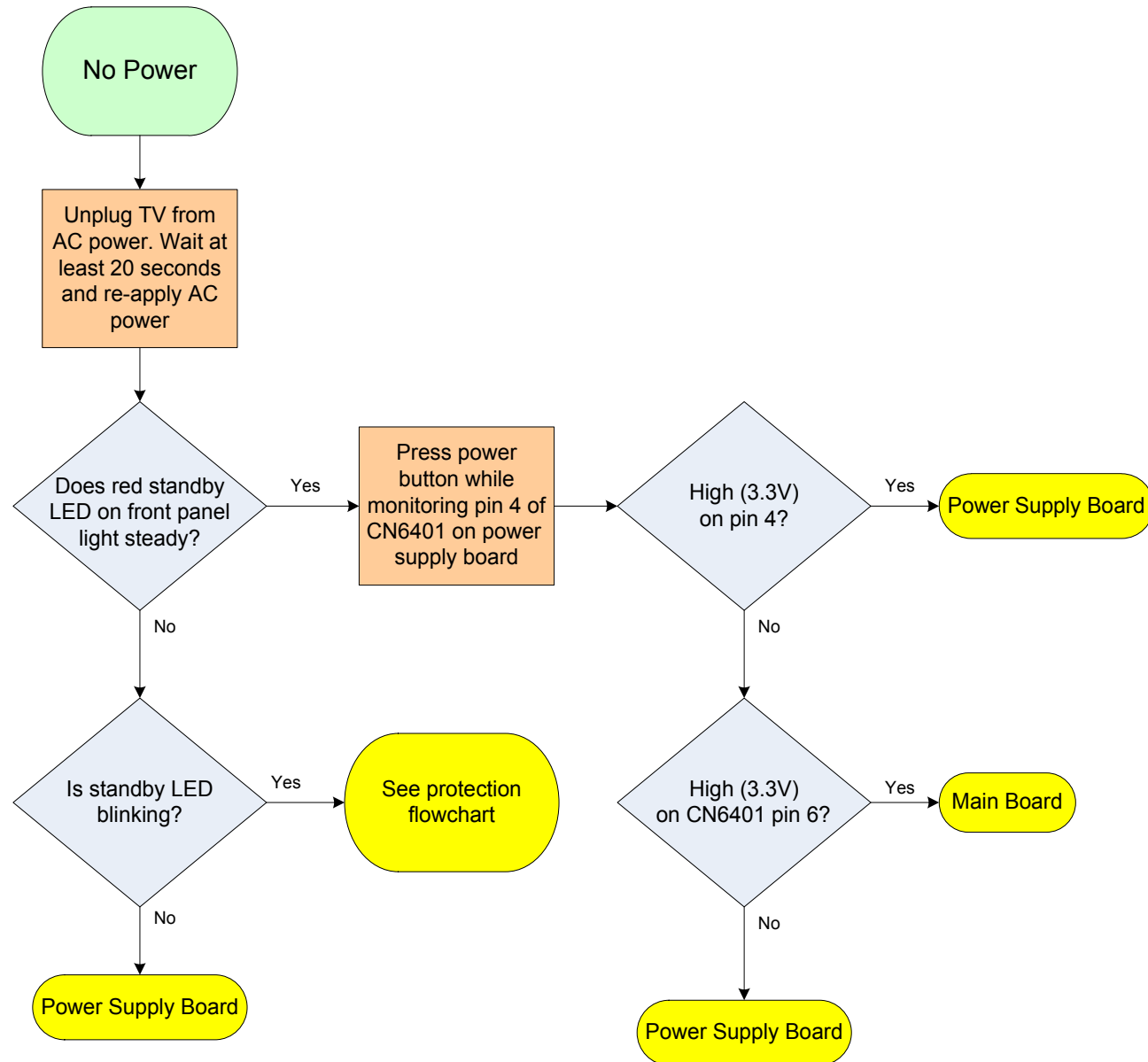
SECTION 2 - TROUBLESHOOTING

POWER AND CONTROL BLOCK DIAGRAM



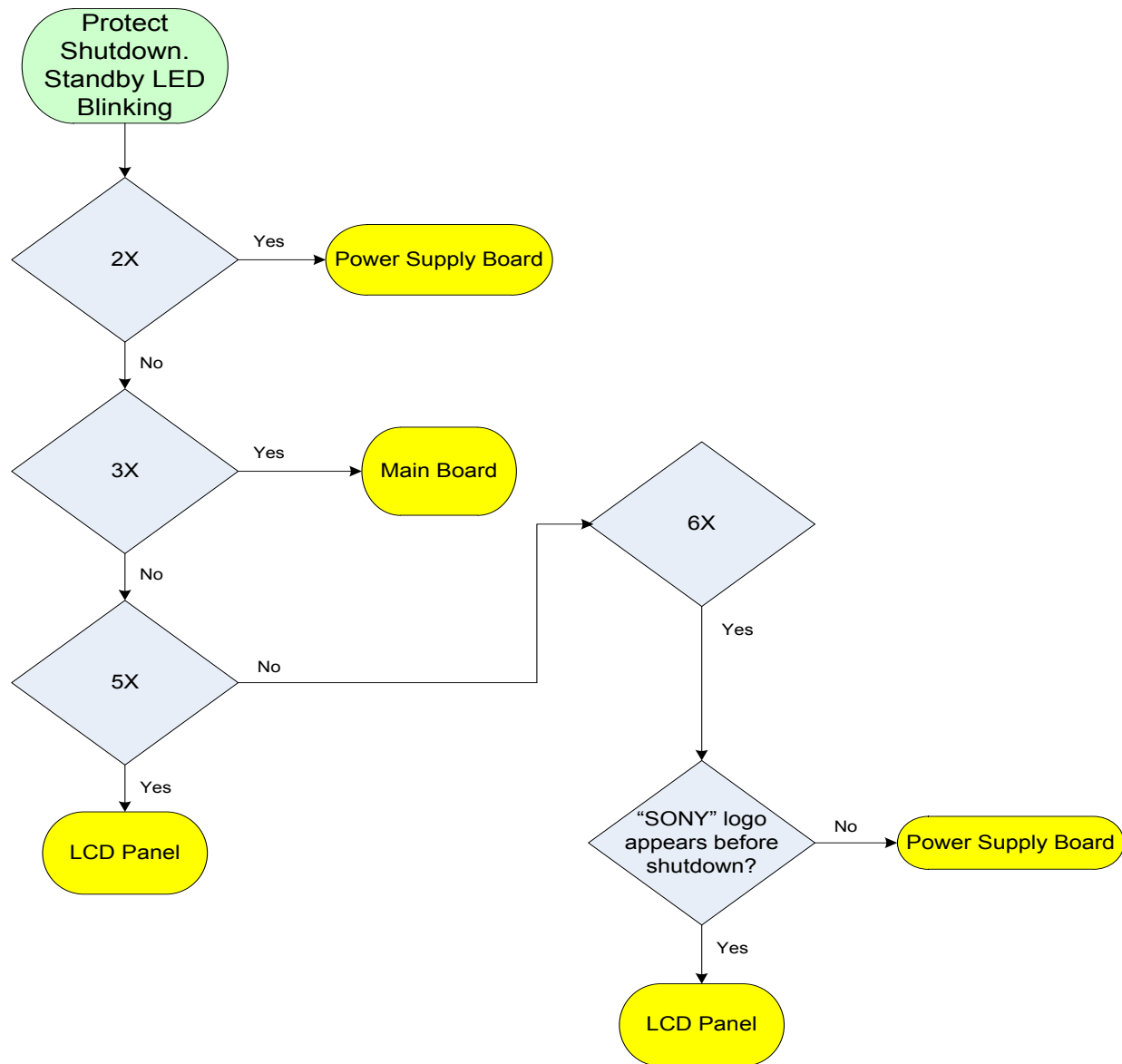
SECTION 2 - TROUBLESHOOTING

NO POWER FLOWCHART



SECTION 2 - TROUBLESHOOTING

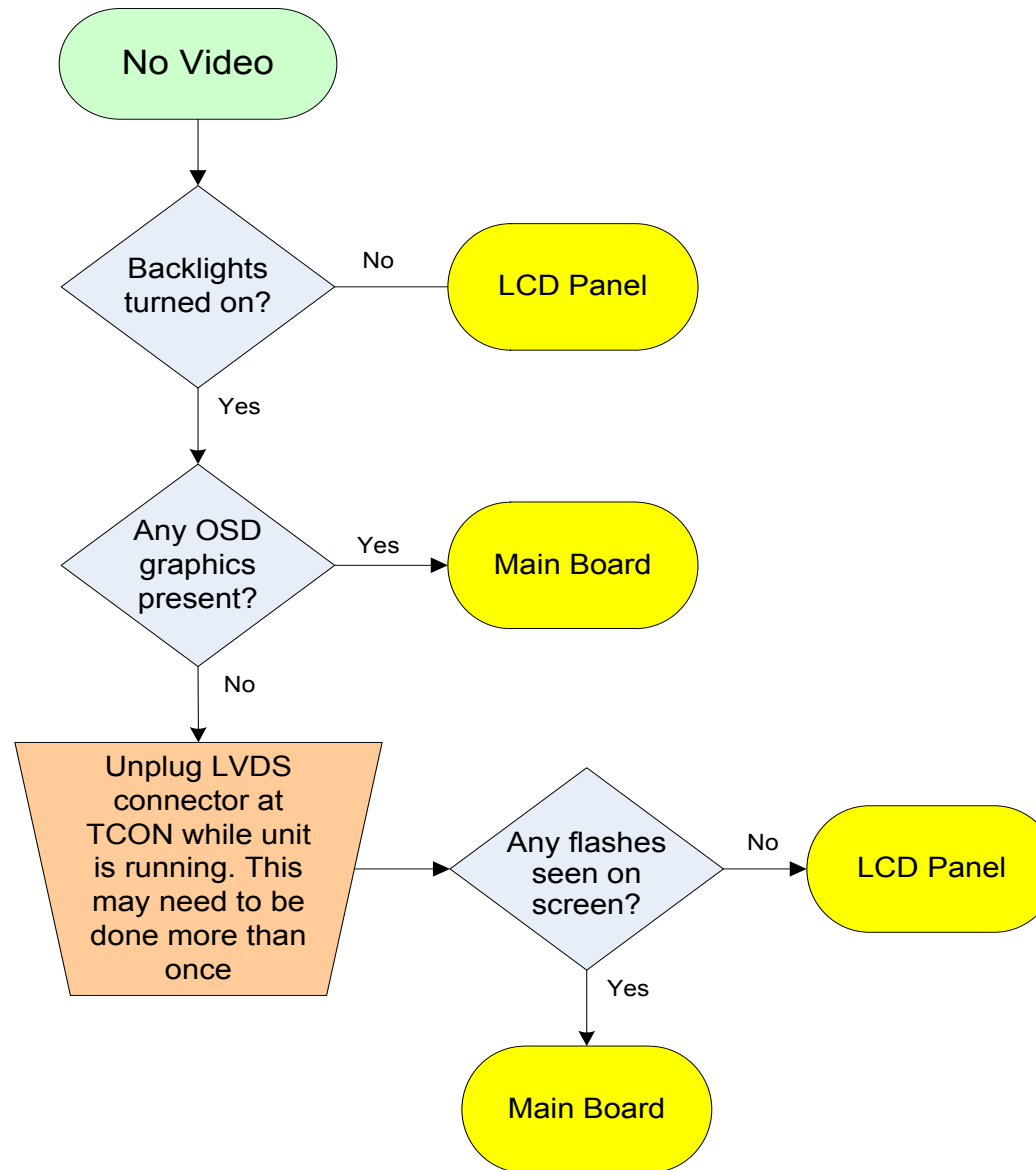
STANDBY LED BLINKING FLOWCHART



*For Part Number information, refer to ["Section 4 - Exploded View/Part Number Information" on page 20](#).

SECTION 2 - TROUBLESHOOTING

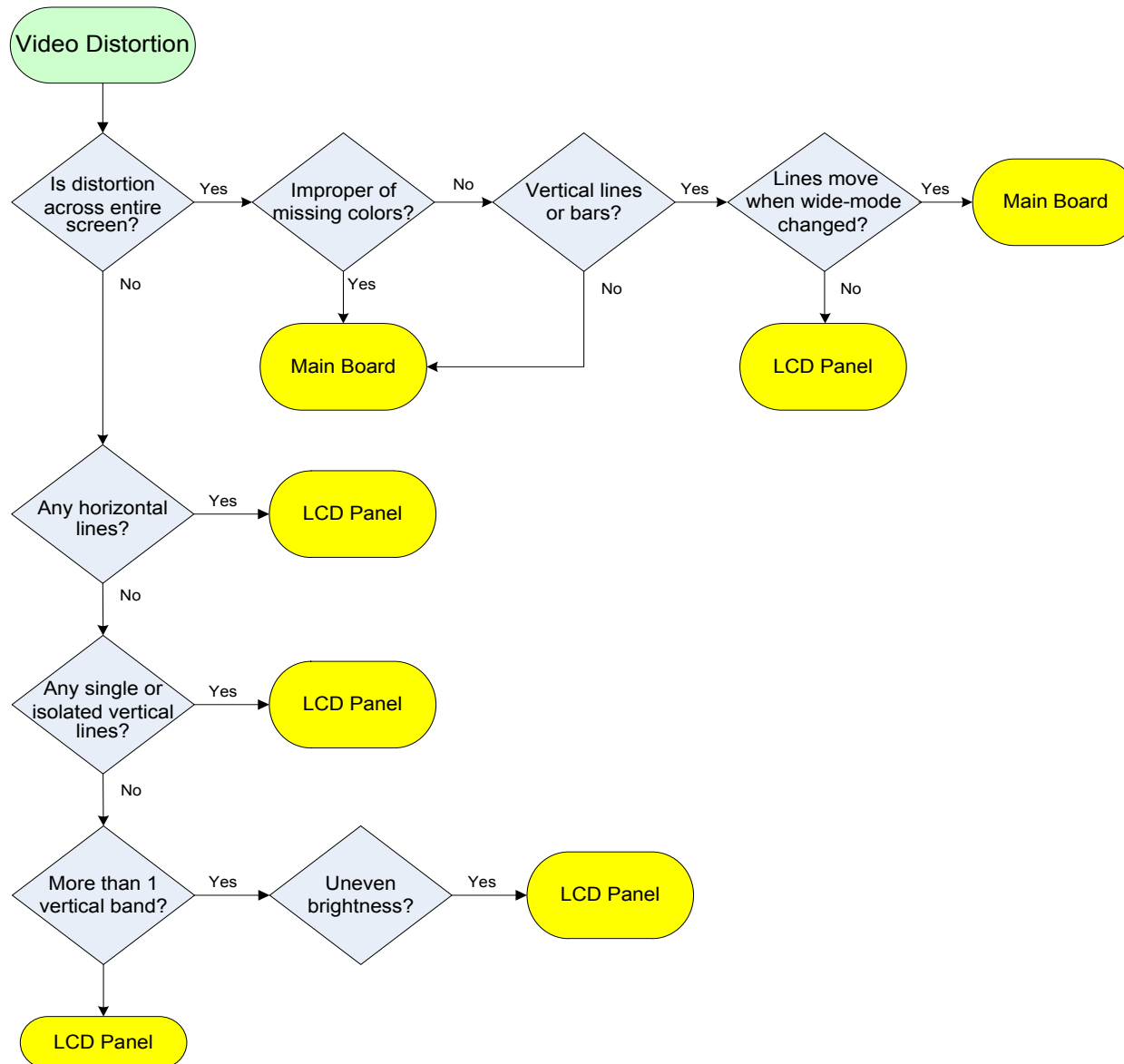
NO VIDEO FLOWCHART



*For Part Number information, refer to ["Section 4 - Exploded View/Part Number Information" on page 20](#).

SECTION 2 - TROUBLESHOOTING

VIDEO DISTORSION FLOWCHART



*For Part Number information, refer to ["Section 4 - Exploded View/Part Number Information" on page 20](#).

SECTION 3 - REPAIR INFORMATION

REPAIRING THE TV

If the latest Software does not correct the issue, complete the following:

1. Verify the television has the symptom the customer indicated.
2. Replace part causing the error.
3. Install the latest version of Software. (Required for ALL repairs)
4. Perform the required service adjustments and checks.
5. Verify the repair resolved the issue.

STARTING THE REPAIR

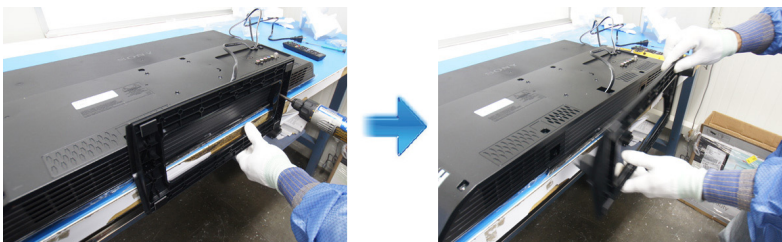
The following information explains how to remove the Table-Top Stand and Rear Cover.

REMOVING THE TABLE-TOP STAND

1. Place TV facing down on a soft and flat surface.

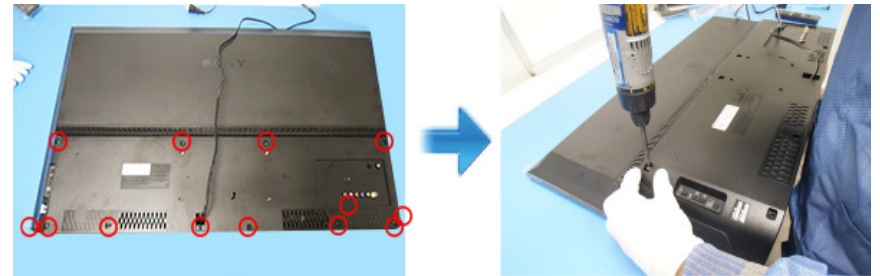


2. Remove 2 screws from Table-Top Stand and carefully detach from Rear Cover.

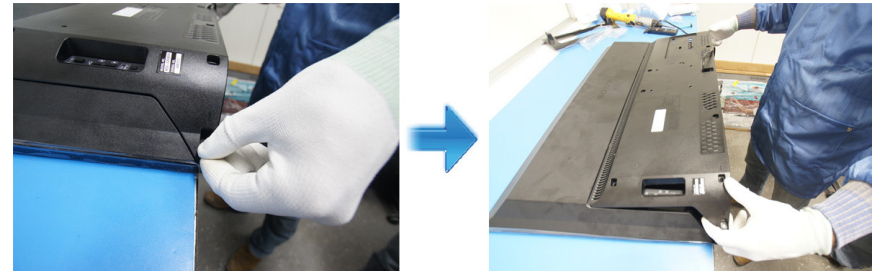


REMOVING THE COVER UNDER

1. Remove the 13 screws from the Cover Under.



2. Hold the bottom of the Cover Under with both thumbs and flip to open it.



3. Grasp the Cover Under from the corner and lift to detach from the bottom.

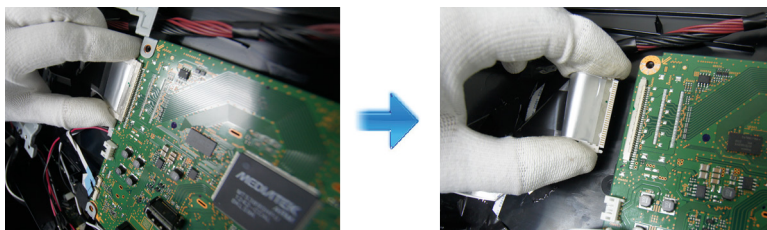


SECTION 3 - REPAIR INFORMATION

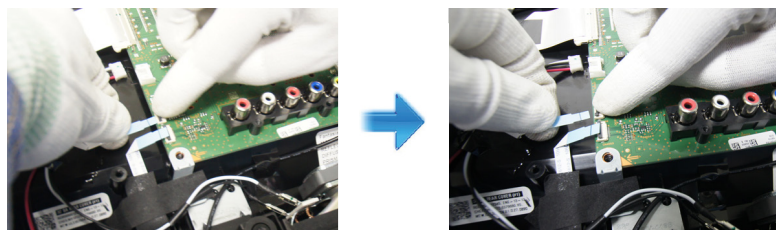
REPLACING THE MAIN BOARD

The Main Board used in these models is available for repair. For Part Number information refer to [Section 4 - Exploded View/Part Number Information on page 20](#).

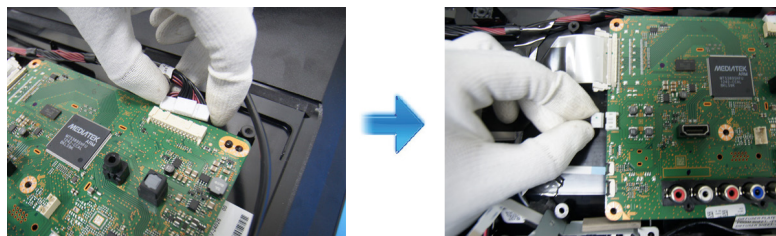
1. Disconnect LVDS and FFC connectors.
 - a. Press both sides to unclamp connector and pull to release.



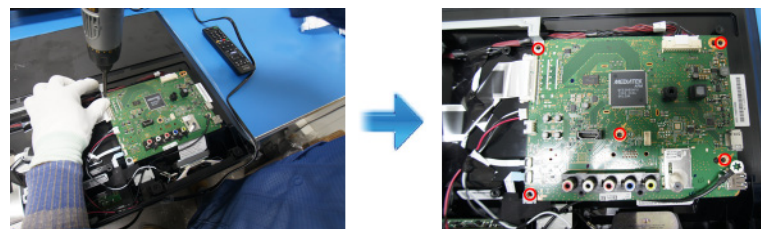
- b. Lift the black bar and pull blue FFC cables to release.



2. Unplug connectors from the Main Board.



3. Remove 5 screws from the Main Board.

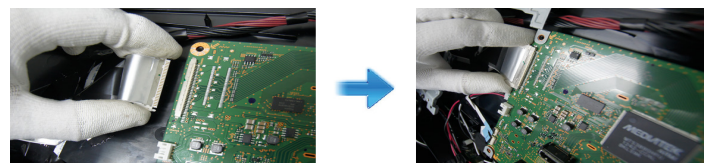


4. Lift to detach from the Rear Cover.

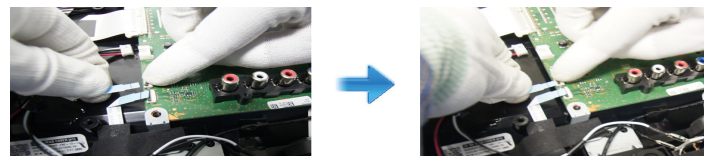


5. Replace with new Main Board.
6. Reconnect the LVDS, FFC Cables and all connectors.

- a. Press both sides to clamp connector and insert back.



- b. Hold the blue FFC cables and insert back in the connector. Once the black marking line is straight, close the bar to secure position.



CAUTION: Make sure the black line is aligned to the Main Board connector when reinserting.

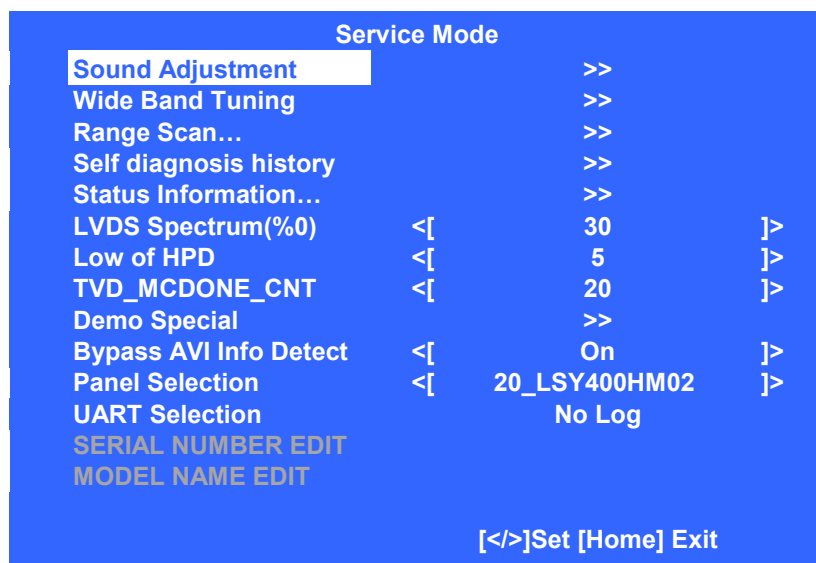
SECTION 3 - REPAIR INFORMATION

7. Turn the TV on, to update the Software.

After ALL repairs **UPDATE** the SOFTWARE to the latest version.
Instructions for updating the Software are included with the Software package on the [Sony Authorized Service Portal](#) website.

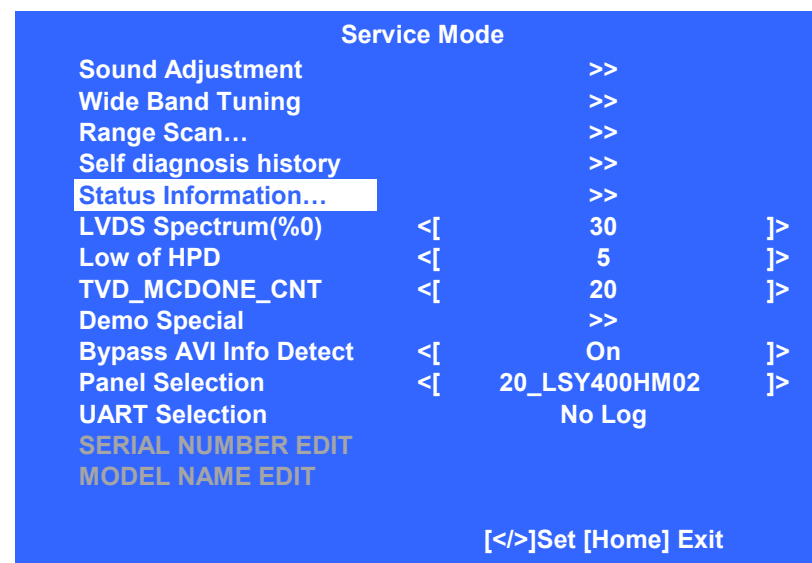
8. After update is complete, press **POWER** to turn off the TV.
9. Access **Service Mode** by pressing the following buttons within 1 second of each other:

DISPLAY → **Channel 5** → **Volume +** → **POWER**



10. Verify the latest Software is installed before proceeding to the service adjustments:

11. Press **↓** until **Status information** is selected.



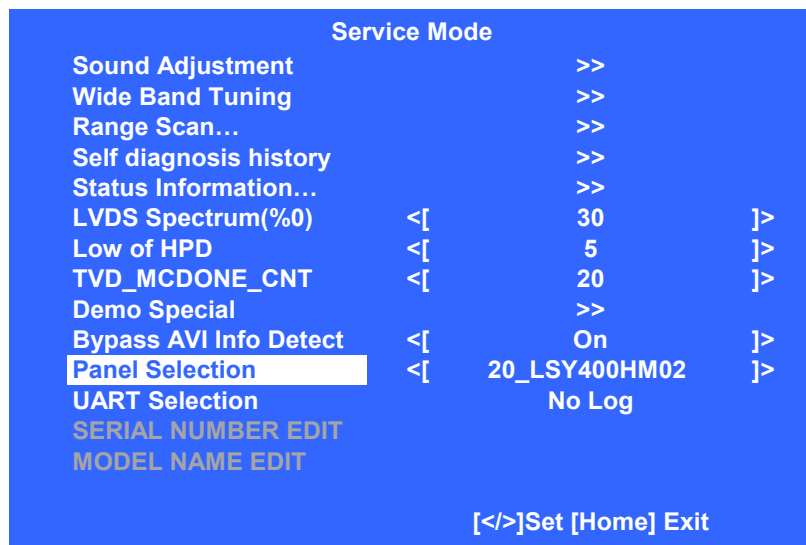
12. Press **→** to view the **Status Information** screen.
The latest version is displayed as shown:





13. Press **RETURN** to display the **Service Mode** screen again.

SECTION 3 - REPAIR INFORMATION

14. Press  until **Panel Selection** is selected.

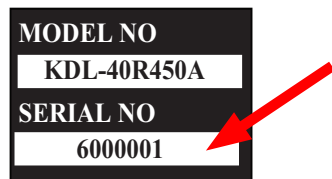


15. Press  or  to select the correct Panel Code for the Panel ID.
(Use the table below for reference).

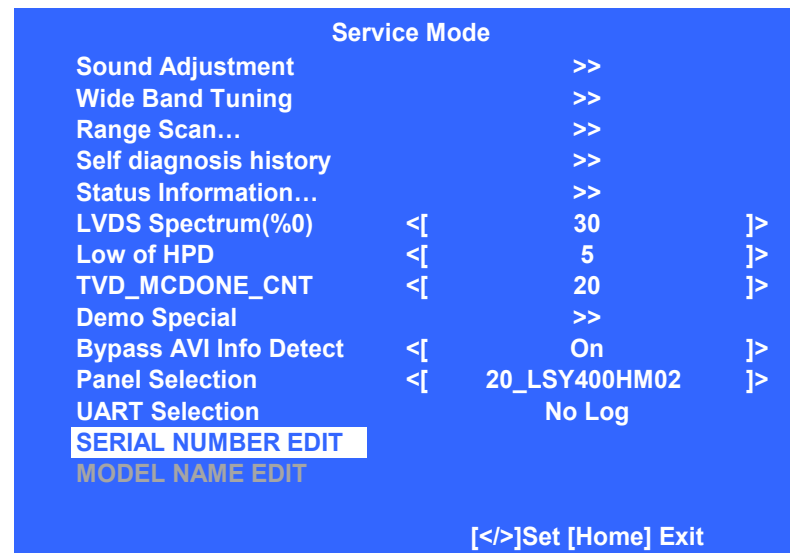
Model Name	Panel Code	Panel Type	Panel ID
KDL-40R450A	20_LSY400HM02	SEC	LSY400HM02
KDL-46R450A	22_LSY460HN01	SEC	LSY460HN01

CAUTION: You **MUST SELECT THE CORRECT PANEL ID CODE** for the picture to display properly.

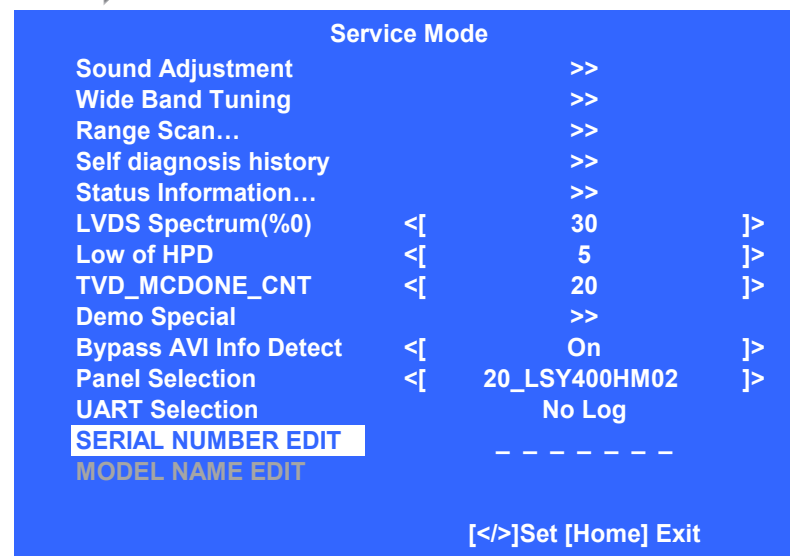
16. Locate the Serial Number for the TV on the side of the Rear Cover of the TV.



17. Press  until **SERIAL NUMBER EDIT** is selected.

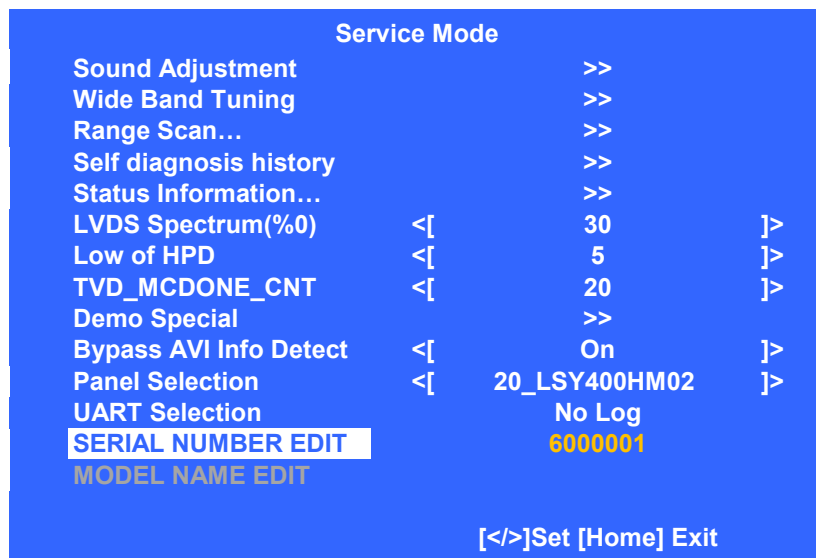


18. Press  to be able to select the first digit.






SECTION 3 - REPAIR INFORMATION

19. Press  or  and  to enter all the digits of the Serial Number.

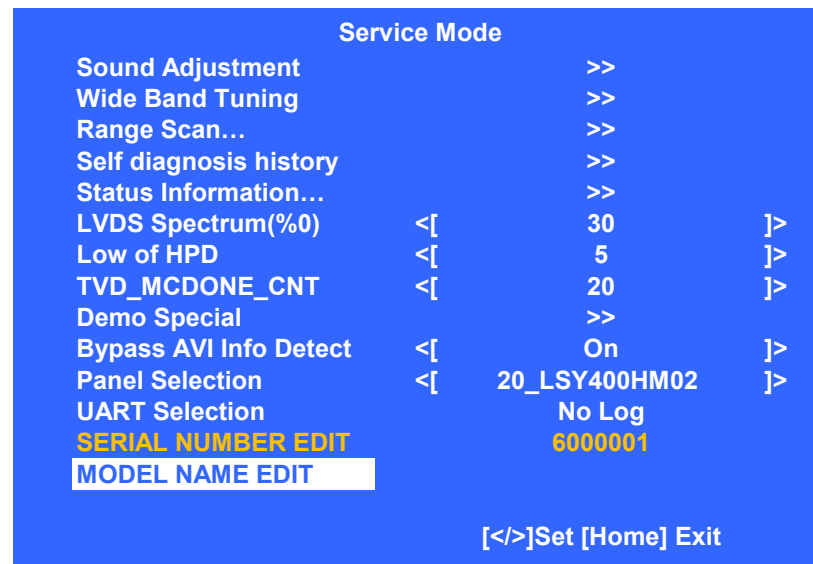



CAUTION: The Serial Number can only be selected once. Be sure to verify the information is correct before saving the changes.

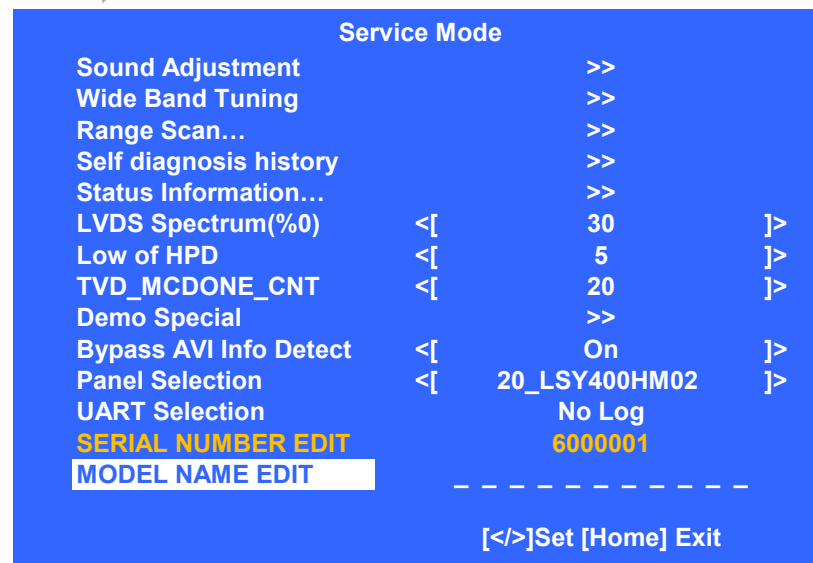
20. When the complete Serial Number is displayed, press .

21. The confirmation screen displays, press  to select **YES** and then press .




22. Press  until **MODEL NAME EDIT** is selected.

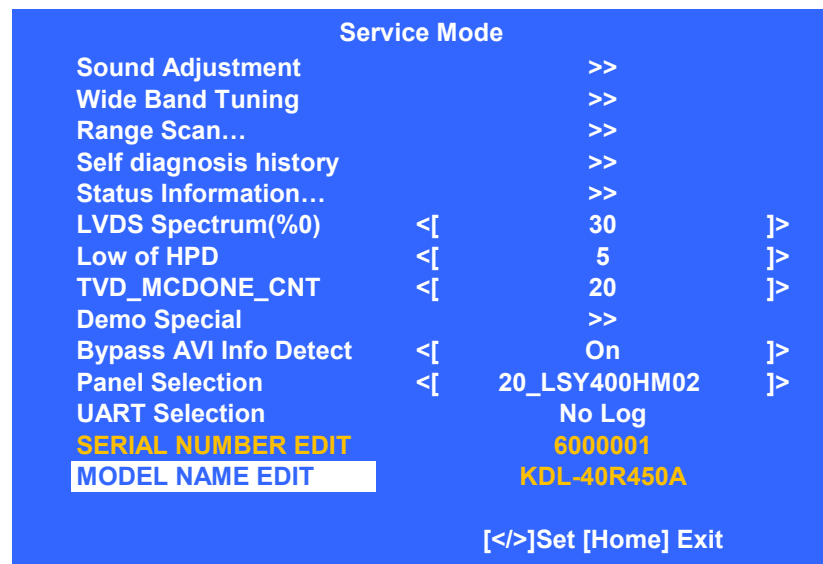


23. Press  to be able to select the first character.





SECTION 3 - REPAIR INFORMATION

24. Press  or  and  to enter all the characters of the Model Name.



CAUTION: The Model Name can only be selected once. Be sure to verify the information is correct before saving the changes.

25. When the complete Model Name is displayed, press .

26. The confirmation screen displays, press  to select **YES** and then press .

27. Press  to exit **Service Mode**.

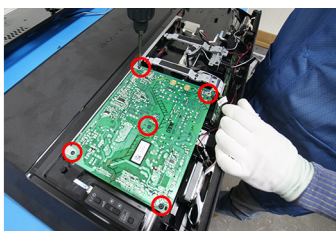
SECTION 3 - REPAIR INFORMATION

REPLACING THE POWER SUPPLY BOARD

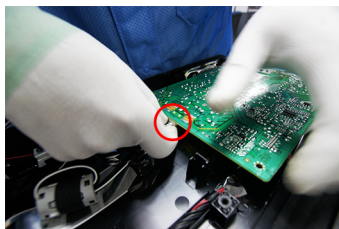
1. Remove the screws and detach brackets.



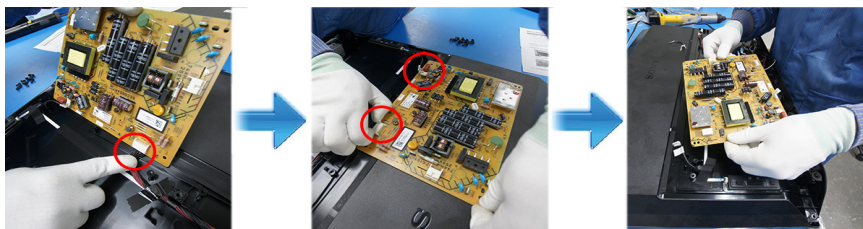
2. Remove 5 screws from the Power Supply Board.



3. Disconnect the Power Cord from the Power Supply Board.



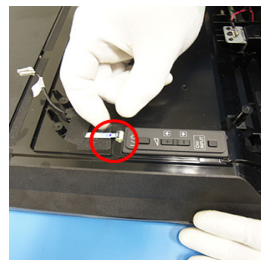
4. Disconnect all the connectors to detach from the Rear Cover.



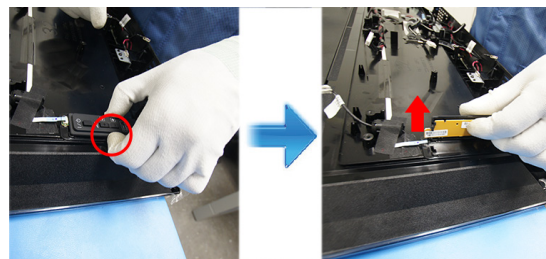
5. Confirm if the latest version of the Software is installed and if not, you must update it.

REMOVING THE SWITCH UNIT

1. Disconnect FFC cable from Switch Unit.



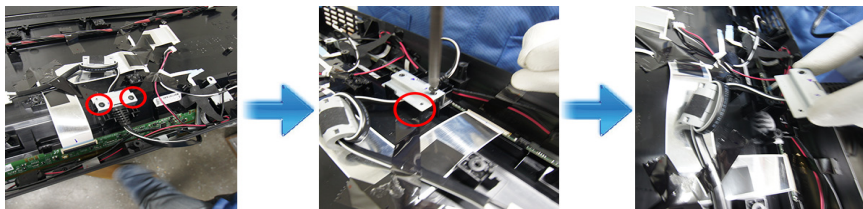
2. Insert finger on the free space on the left side pocket where Switch Unit is located and pull to detach from Rear Cover.



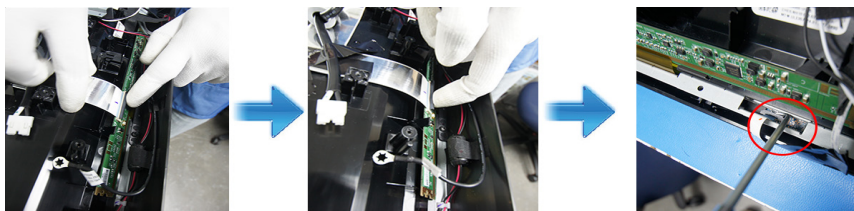
SECTION 3 - REPAIR INFORMATION

REMOVING THE BEZEL

1. Remove the screws and detach the Power Cord.

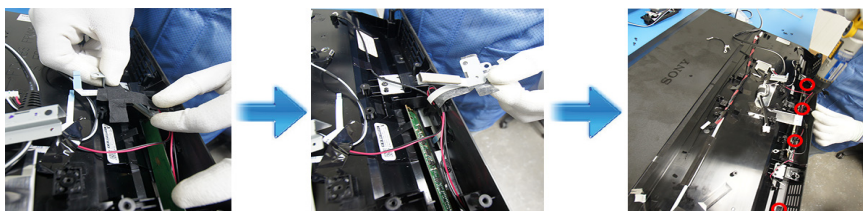


2. Disconnect connectors from the TCON and H Board.

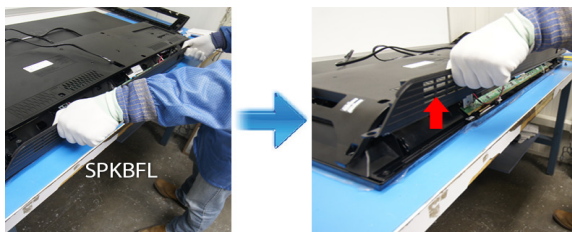


Caution: To avoid damaging the connector, make sure the H Board is disconnected before removing the SPK BFL from the Rear Cover.

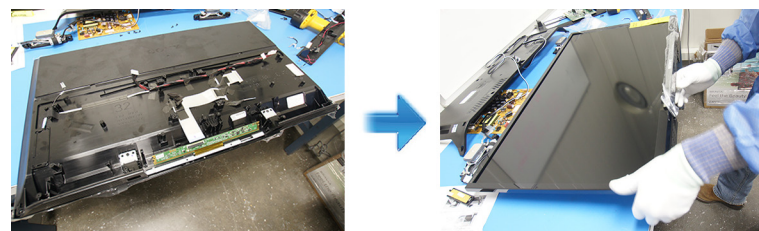
3. Remove the harness assembly carefully.



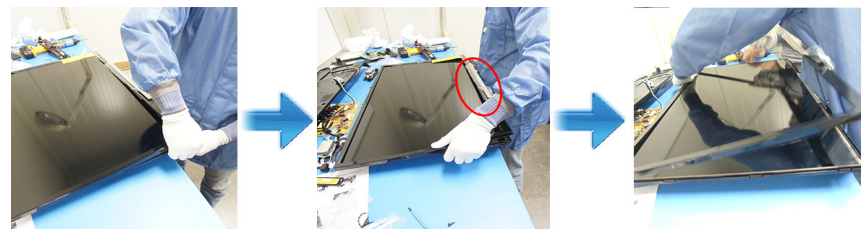
4. Gently lift up the cover and detach from LCD Panel.



5. Flip the TV face up and press the gap between the LCD Panel and Bezel.




6. Gently lift up and unhook the Bezel to detach.




SECTION 4 - EXPLODED VIEW/PART NUMBER INFORMATION

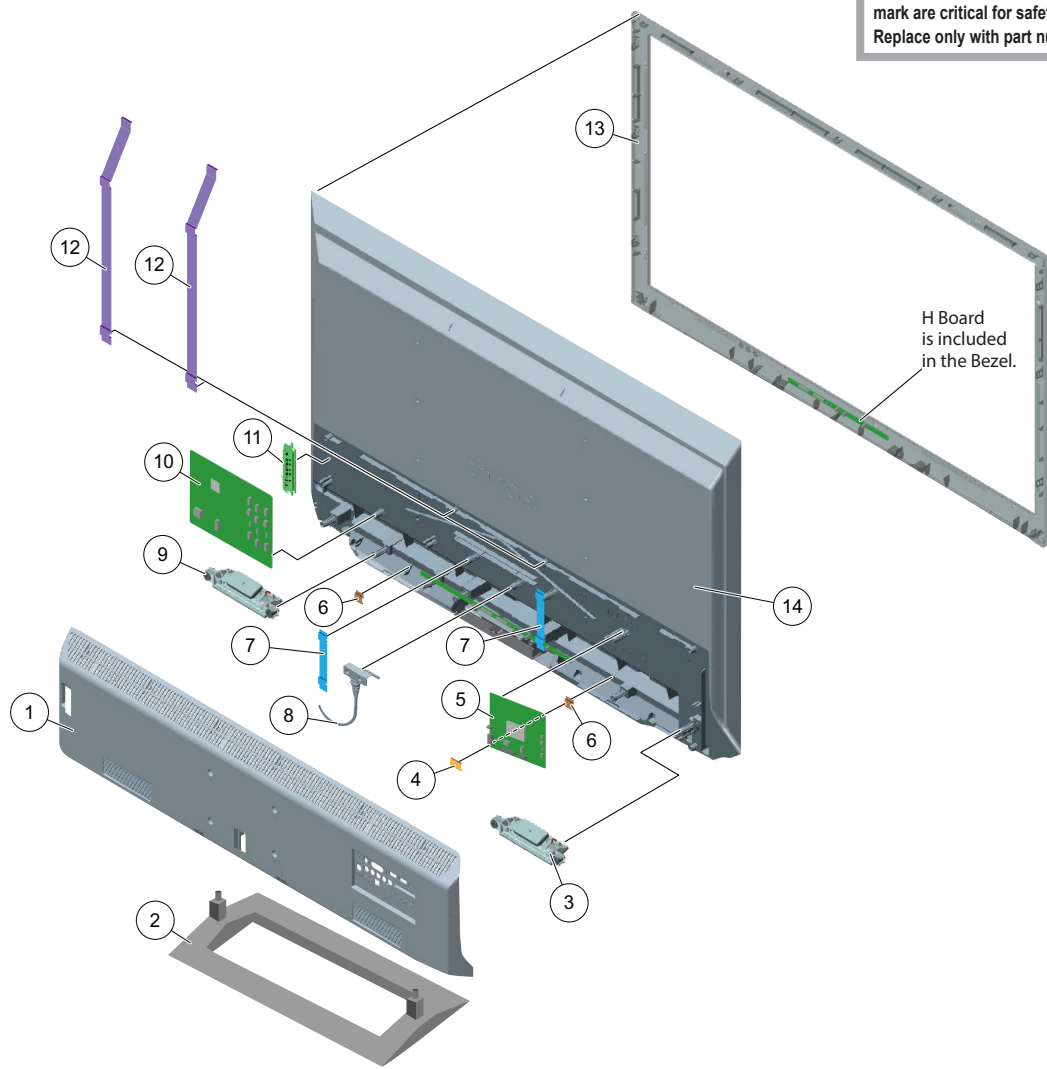
KDL-40R450A/46R450A




Components not identified by a part number or description are not stocked because they are seldom required for routine service.

NOTE: The components identified by shading and a  mark are critical for safety. Replace only with part number specified.

The component parts of an assembly are indicated by the reference numbers in the far right column of the parts list and within the dotted lines of the diagram.


NOTE: The components identified by a red outline and a  mark contain confidential information. Specific instructions must be adhered to whenever these components are repaired and/or replaced. (See Appendix A)




REF. NO.	PART NO.	DESCRIPTION	[ASSEMBLY INCLUDES]
1	4-459-446-01	COVER, UNDER (40FANF) (KDL-40R450A ONLY)	
1	4-459-473-01	COVER, UNDER (46FANF) (KDL-46R450A ONLY)	
2	4-459-511-01	PLASTIC, STAND (ML1F)	
3	1-858-888-11	LOUD SPEAKER (L) 40X100MM	
4	4-459-445-01	BRACKET, SP (40FANF) (KDL-40R450A ONLY)	
4	4-459-472-01	BRACKET, SP (46FANF) (KDL-46R450A ONLY)	
 5	1-895-371-11	A BOARD, COMPLETE	
AFTER REPLACING THE MAIN BOARD, YOU MUST UPDATE THE SOFTWARE TO THE LATEST VERSION.			
6	4-459-477-01	BRACKET, STAND A (40FANF)	
7	4-459-475-01	BRACKET, VESA (FANF) (KDL-40R450A ONLY)	
7	4-459-475-11	BRACKET, VESA (FANF) (KDL-46R450A ONLY)	
 8	1-846-638-11	POWER-SUPPLY CORD (KDL-40R450A ONLY)	
 8	1-846-638-31	POWER-SUPPLY CORD (KDL-46R450A ONLY)	
9	1-858-888-21	LOUD SPEAKER (R) 40X100MM	
10	1-474-487-11	GL4 BOARD, COMPLETE (KDL-40R450A ONLY)	
10	1-474-488-11	GL5 BOARD, COMPLETE (KDL-46R450A ONLY)	
11	1-492-329-11	SWITCH UNIT	
12	4-459-474-01	BRACKET, VESA TOP A (46FANF) (KDL-46R450A ONLY)	
13	A-1932-053-A	BEZEL (40FANFB MR) (KDL-40R450A ONLY)	
13	A-1932-061-A	BEZEL (46FANFB MR) (KDL-46R450A ONLY)	
14	NA	LCD PANEL	
FOR ALL LCD PANEL AND TCON BOARD PART NUMBER INFORMATION REFER TO THE LCD PANELS SERVICE MANUAL.			

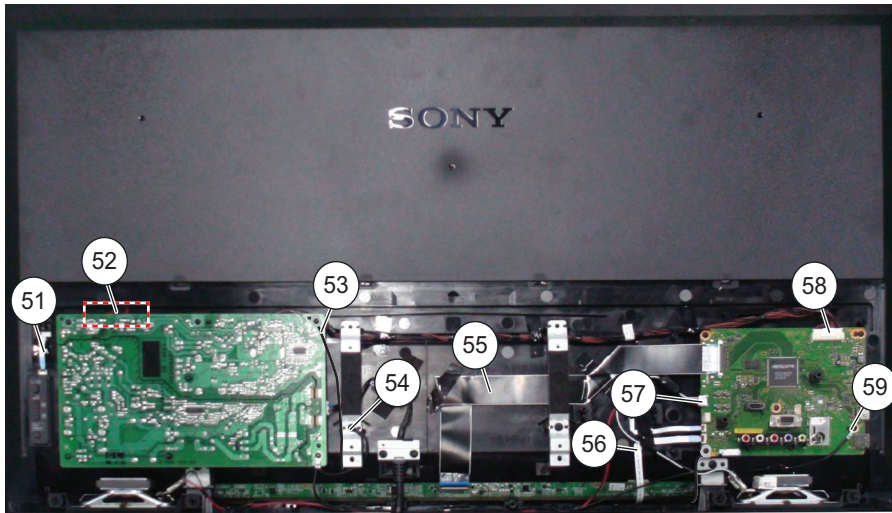
SECTION 4 - EXPLODED VIEW/PART NUMBER INFORMATION

CONNECTORS

NOTE: The components identified by shading and  mark are critical for safety.
Replace only with part number specified.

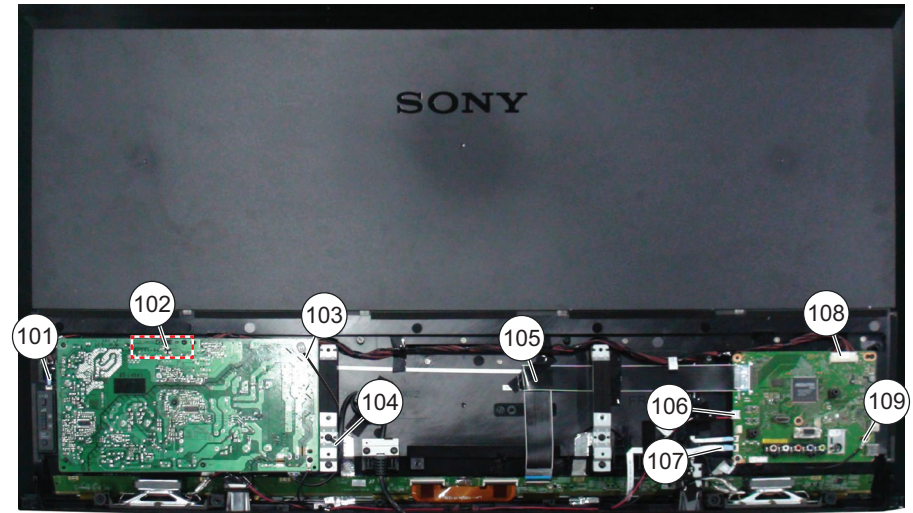
NOTE: The components identified by a red outline and a  mark contain confidential information. Specific instructions must be adhered to whenever these components are repaired and/or replaced. (See Appendix A)

KDL-40R450A



REF. NO.	PART NO.	DESCRIPTION
51	1-910-107-50	FFC CABLE 40 MB-KEY 6P
52	1-910-107-47	CONNECTOR ASSEMBLY 40/46 PSU-LED
53	1-910-107-44	GROUND CABLE 40 MB-PSU (M) (LA,MX MODELS ONLY)
54	1-910-107-46	GROUND CABLE 40 MB-SOURCE
55	1-910-107-48	(LVDS) FFC CABLE 40 MB-TCON 51P
56	1-910-107-49	FFC CABLE 40 MB-IR 10P
57	1-910-107-43	CONNECTOR ASSEMBLY 40 MB-SP LR 4P
58	1-910-107-42	CONNECTOR ASSEMBLY 40 MB-PSU 14P
59	1-910-107-45	GROUND CABLE 40 MB-PSU (L)


KDL-46R450A






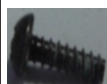


REF. NO.	PART NO.	DESCRIPTION
101	1-910-107-67	FFC CABLE 46 MB-KEY 6P
102	1-910-107-47	CONNECTOR ASSEMBLY 40/46 PSU-LED
103	1-910-107-62	GROUND CABLE 46 MB-PSU (M) (LA,MX MODELS ONLY)
104	1-910-107-64	GROUND CABLE 46 MB-SOURCE
105	1-910-107-65	(LVDS) FFC CABLE 46 MB-TCON 51P
106	1-910-107-61	CONNECTOR ASSEMBLY 46 MB-SP LR 4P
107	1-910-107-66	FFC CABLE 46 MB-IR 10P
108	1-910-107-60	CONNECTOR ASSEMBLY 46 MB-PSU 14P
109	1-910-107-63	GROUND CABLE 46 MB-PSU (L)

SECTION 4 - EXPLODED VIEW/PART NUMBER INFORMATION

SCREWS

NOTE: The components identified by shading and  mark are critical for safety. Replace only with part number specified.

NOTE: The components identified by a red outline and a  mark contain confidential information. Specific instructions must be adhered to whenever these components are repaired and/or replaced. (See Appendix A)

P/N	DESCRIPTION	KDL-40R450A	KDL-46R450A
 2-580-639-01	Screw, +BVTP 4x12 TYPE2 IT-3	Rear Cover (12), Bracket Vesa (2), Bracket AC (2), Bracket Stand(2) Speaker Blaffe (4)	Rear Cover (12), Bracket Vesa (4), Bracket AC (2), Bracket Stand (2), Speaker Baffle (4)
 7-685-646-79	SCREW, +BVTP 3X8 TYPE2 IT-3	G Board (7), A Board/Bracket SP (5)	G Board (6), A Board (4), Bottom Bracket (2)
 7-685-647-79	SCREW +BVTP 3X10 TYPE2 IT-3	RC Terminal (1)	Not Used
 2-580-608-11	SCREW, +PSW M5X16	Table Top Stand to TV (2)	Table Top Stand to TV (2)
N/A	GEAR SCREW M3X5 22	Not Used	A Board (1), G Board (1)
 7-685-648-71	SCREW +BVTP 3X12 TYPE2 IT-3	Not Used	RC Terminal (1)

SECTION 5 - ACCESORIES PART NUMBER INFORMATION

ACCESSORIES AND PACKAGING

PART NO.	DESCRIPTION
2-580-608-11	SCREW, +PSW M5X16 (SCREWS TO ATTACH TABLE-TOP STAND TO LCD TV) <i>For product protection and safety reasons, Sony strongly recommends that you use the screws provided with the TV.</i> <i>CAUTION: These screws cannot be used to secure the TV to the Wall Mount Brackets.</i>
2-580-602-01	SCREW, +PSW M4X12 (ATTACHMENT PARTS FOR WALL-MOUNT BRACKETS) (KDL-46R450A ONLY)
4-459-301-11	GUIDE, QUICK SETUP (ENGLISH VERSION)
4-459-301-21	GUIDE, QUICK SETUP (FRENCH VERSION)
4-459-301-31	GUIDE, QUICK SETUP (SPANISH VERSION)
4-459-301-51	GUIDE, QUICK SETUP (ENGLISH AND SPANISH VERSION)
4-458-509-11	MANUAL, INSTRUCTION(ENGLISH VERSION)
4-458-509-21	MANUAL, INSTRUCTION (FRENCH VERSION)
4-458-509-31	MANUAL, INSTRUCTION (SPANISH VERSION)
4-456-270-11	SUPPLEMENT (STAND INSTALLATION)

MISCELLANEOUS

PART NO.	DESCRIPTION
3-299-071-06	FLYER, SAFETY
4-464-002-01	GASKET (40FANF) (KDL-40R450A ONLY)
4-464-000-01	GASKET (46FANF) (KDL-46R450A ONLY)

OPTIONAL ACCESSORIES

PART NO.	DESCRIPTION
4-414-470-01	SUPPORT BELT KIT




REMOTE COMMANDER

PART NO.	DESCRIPTION
1-492-065-11	REMOTE COMMANDER (RM-YD092)

APPENDIX A: ENCRYPTION KEY COMPONENTS

Encryption key components developed by Sony Corporation contain confidential information and shall be handled under the non-disclosure obligations provided in the applicable agreement with Sony Corporation (and/or its subsidiary).

As part of this agreement specific instructions must be adhered to whenever a Circuit Board containing encryption key components is repaired and/or replaced pursuant to the following:

1. In the service manual the Circuit Board(s) containing encryption key components shall be identified with a red outline and a .
2. Only repair boards or components listed in the service manual shall be utilized for replacement and/or repair.
3. Disassembly, decryption or reverse-engineering component(s) is strictly prohibited.
4. Any board in which the Servicer replaces an encryption key component must be placed back into the set it originally came from and the replaced defective component MUST BE DESTROYED. Boards cannot be swapped.
5. If a Circuit Board identified with a red outline and a  in the service manual is deemed to be defective:
 - a. and if a core charge is imposed and is covered under the product warranty, the defective un-repaired or modified board MUST BE RETURNED to Sony.
 - b. and if the core charge is NOT covered under the product warranty, the defective un-repaired or modified board MUST BE DESTROYED.
6. If a unit is destroyed (such as field scrap), the Circuit Board identified with a red outline and a  in the service manual MUST BE DESTROYED.

SONY® is a trademark of Sony Electronics.

Reproduction in whole or part without written permission is prohibited. All rights reserved.

Sony Corporation

Sony LCSC

Technical Services

Service Publication Department

9-883-499-01

English
2013AJ74WEB-1
© 2013.1