

X Max Series  
DAW Remote Script  
User Guide

V1.0.2

**MIDIPLUS**

# Contents

Ableton Live.....	3
I. Installation Steps .....	3
II. Script Features .....	4
Cubase/Nuendo.....	4
I. Installation Steps .....	4
II. Script Features .....	4
III. Notes .....	4
FL Studio.....	5
I. Installation Steps .....	5
II. Script Features .....	6
III. Notes .....	6
Logic Pro X .....	6
I. Installation Steps .....	6
II. Script Features .....	7

# Ableton Live

## I. Installation Steps

1. Locate the following directory:

PC Users

C:\Users\Your Username\AppData\Roaming\Ableton\Live (Version Number)\Preferences\User Remote Scripts

Mac Users

mac/Users/Your Username/library/preferences/Ableton/Live (Version Number)/User Remote Scripts

- Copy the decompressed script folder (including the outer MIDIPLUS script folder) into the User Remote Scripts folder.
- Connect the MIDI keyboard to your computer, press the SCENE button on the MIDI keyboard, and use the X knob to select the ABLETON LIVE preset. Then open the Ableton Live software.
- Open Options - Preferences and go to the Link/Tempo/MIDI tab.
- In the Control Surface section, select your keyboard model.
- In the Input/Output section, select your MIDI keyboard.
- Set the MIDI Ports as shown in the image below to start using.



## II. Script Features

6 transport buttons correspond to: Rewind, Fast Forward, Loop, Record, Play, and Stop.

8 knobs correspond to: Quick mapping parameters for software instruments and plugins.

8 buttons control mute for 8 tracks.

8 faders adjust the volume of the current 8 tracks.

# Cubase/Nuendo

## I. Installation Steps

1. Locate the following directory:

PC Users

C:\Users\Your Username\Documents\Steinberg\Cubase\MIDI Remote\Driver Scripts\Local

Mac Users

mac/Users/Your Username/Documents/Steinberg/Cubase/MIDI Remote/Driver Scripts/Local

2. Copy the decompressed script folder (including the outer MIDIPLUS script folder) into the Local folder

3. Connect the MIDI keyboard to your computer, press the SCENE button on the MIDI keyboard, and use the X knob to select the CUBASE preset. Then open Cubase to start using.

## II. Script Features

The X knob rotates to switch tracks; pressing it opens software instruments.

6 transport buttons correspond to: Rewind, Fast Forward, Loop, Record, Play, and Stop.

8 knobs correspond to: Quick mapping parameters for software instruments and plugins.

8 buttons correspond to: B1: Undo B2: Redo B3: Solo B4: Mute B5: Metronome B6: MixConsole

B7: Export Audio B8: Save Project.

8 faders adjust the volume for the current eight tracks. Use the X knob to switch between different track groups, enabling volume adjustment for all tracks in the project.

## III. Notes

If the script does not work or is not recognized, please check the following:

1. The SCENE button is set to CUBASE mode.

2. The MIDI keyboard channel is set to Channel 1. (long-press the X knob and use the keyboard's secondary function to switch channels)
  3. Disable and re-enable the script. (required when reconnecting multiple X Max models)
  4. The software version is Cubase 11 or higher.
1. Ensure that the SCENE button has been used to switch to CUBASE mode.
  2. Ensure that the MIDI keyboard channel is set to channel 1 (long press the X knob and use the secondary function keys to switch channels).
  3. Try disabling the script and then re-enabling it (this is necessary when connecting multiple models).
  4. Ensure that you are using Cubase 11 or later.

# FL Studio

## I. Installation Steps

1. Locate the following directory:

PC Users

C:\Users\Your Username\Documents\Image-Line\FL Studio\Settings\Hardware

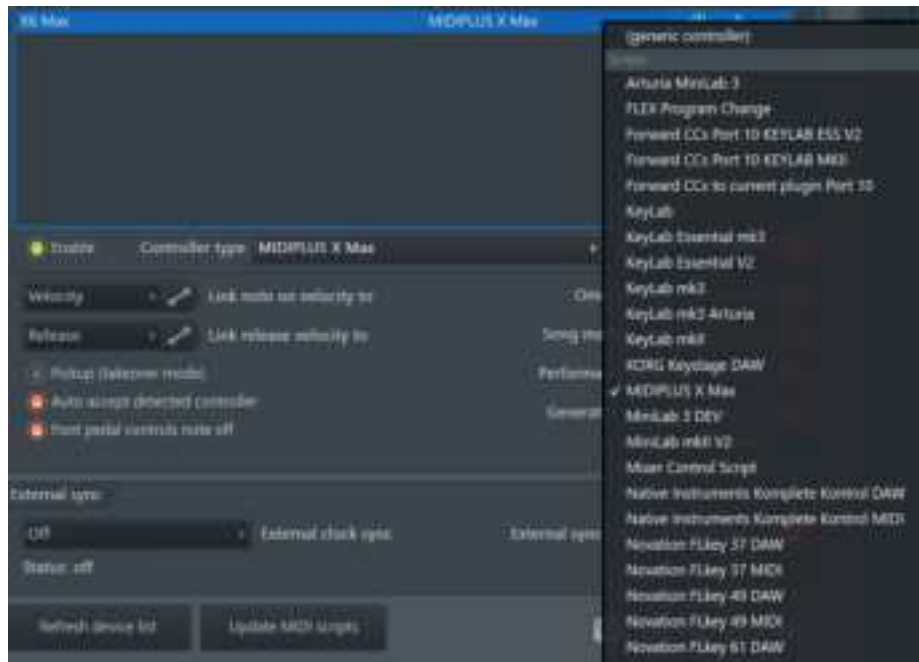
Mac Users

mac/Users/Your Username/Documents/Image-Line/FL Studio/Settings/Hardware

2. Copy the decompressed script folder (including the outer MIDIPLUS script folder) into the Hardware folder.
3. Connect the MIDI keyboard to your computer, press the SCENE button on the MIDI keyboard, and use the X knob to select the FL STUDIO preset. Then open FL Studio.
4. Click Options - MIDI Settings in the FL Studio.
5. In the Settings - MIDI Input/Output Devices window, select the MIDI tab, then highlight and select your X Max series keyboard in both the Output and Input sections.



6. In the Controller type dropdown, select the MIDIPLUS X Max script, set both input and output Ports to 0, and click the Enable button.



## II. Script Features

The X knob rotates to switch channels and control the playback bar; pressing it opens VST instruments.

6 transport buttons correspond to: Rewind, Fast Forward, Loop, Record, Play, and Stop.

8 knobs provide mapping for plugin parameters or panning.

8 buttons correspond to: B1: Undo B2: Redo B3: Solo B4: Mute B5: Metronome B6: Toggle between song/pattern mode B7: Switch edit areas B8: Save Project.

8 faders adjust the volume for the current 8 tracks. Use the X knob to adjust the volume for all tracks in the project.

## III. Notes

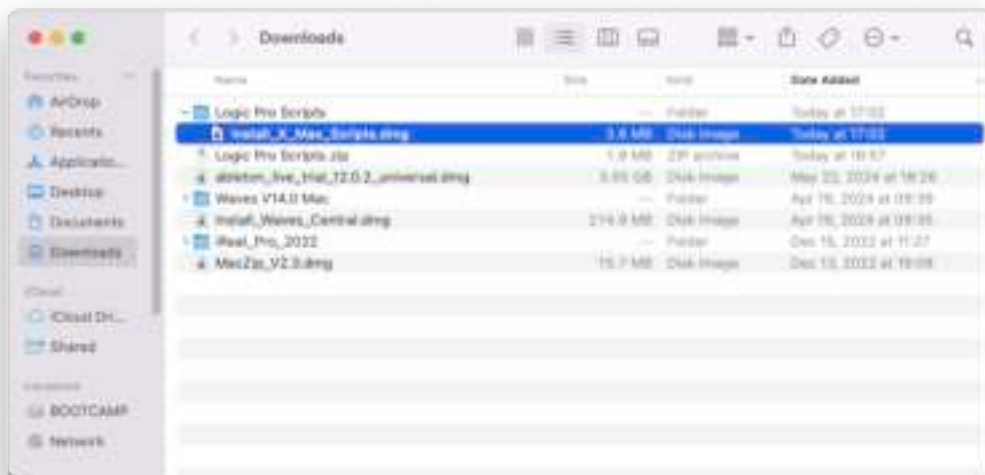
This script requires FL Studio 2024 or later. Older versions may have compatibility issues.

# Logic Pro X

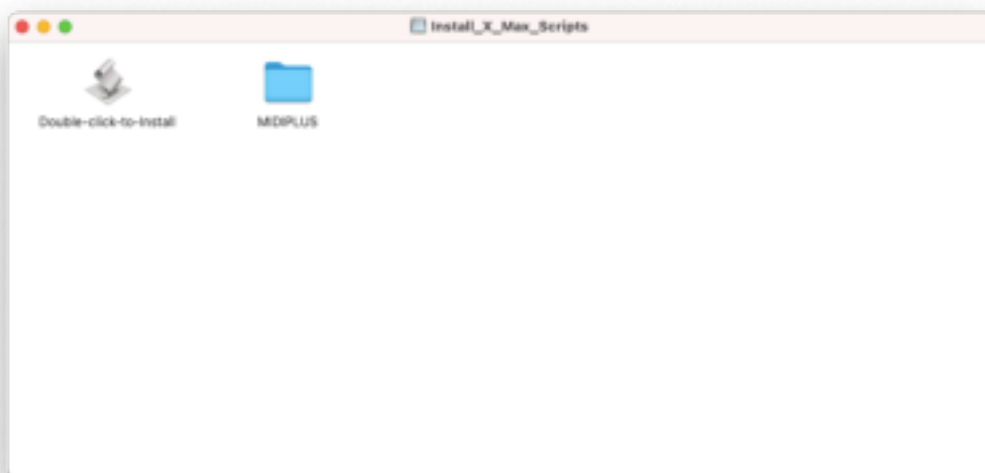
## I. Installation Steps

1. Decompress the script file.

2. Double-click to load the Install\_X\_Max\_Scripts.dmg.



3. Double-click the Double-click-to-Install icon to install.



## II. Script Features

The X knob rotates to switch tracks; pressing it opens software instruments.

6 transport buttons correspond to: Rewind, Fast Forward, Loop, Record, Play, and Stop.

8 knobs provide mapping for plugin parameters or panning.

8 buttons correspond to: B1:Undo B2: Redo B3: Solo B4: Mute B5: Metronome B6: Note Quantize

B7: Track/Instrument Switch B8: Save Project.

8 faders adjust the volume for the current 8 tracks. Use the X knob to adjust the volume for all tracks in the project.

Note: This script is also compatible with GarageBand.