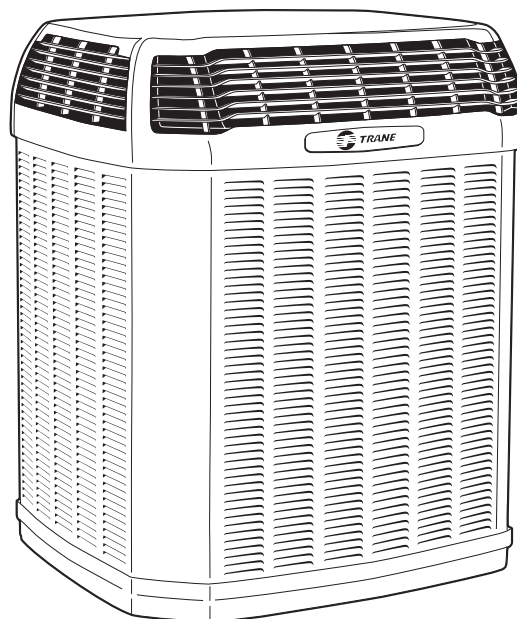




Submittal

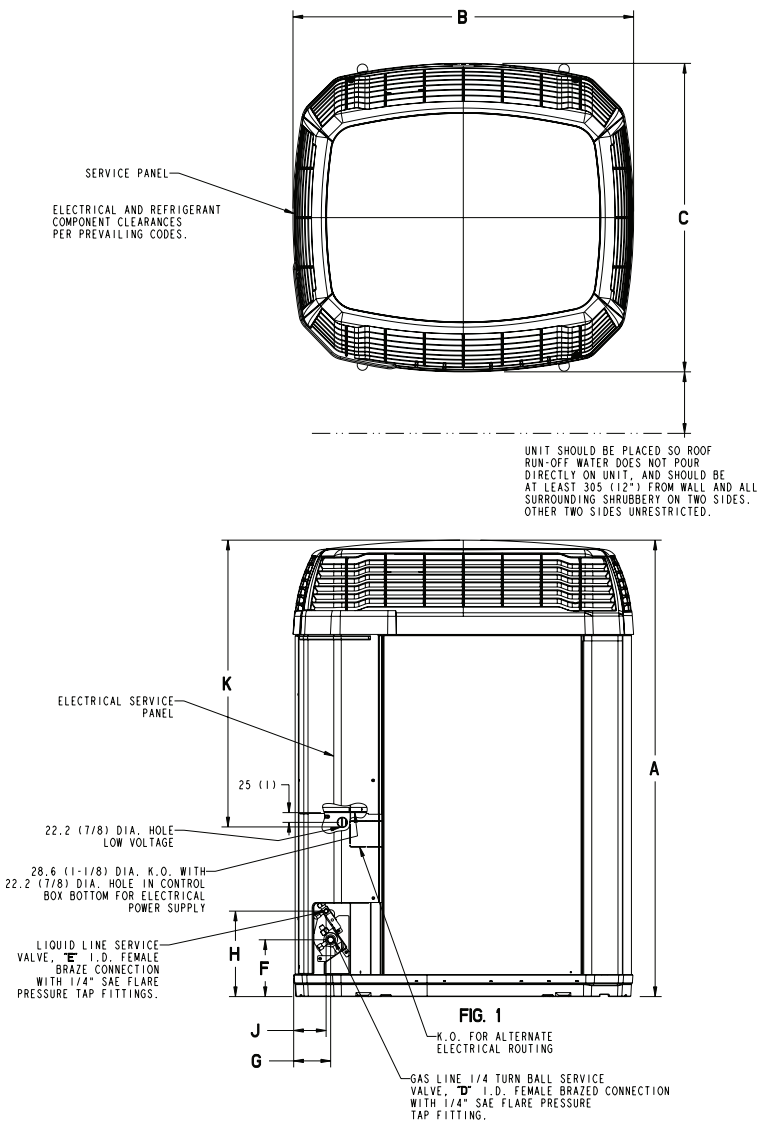
3 Ton Split System Heat Pump — 1 Ph

4TWX7036E1000A



Note: "Graphics in this document are for representation only.
Actual model may differ in appearance."

NOTE: All dimensions are in mm/inches.



From Dwg. D152635 Rev. 16

Product Specifications

OUTDOOR UNIT ①②		4TWX7036E1000A
POWER CONNS. — V/PH/HZ ③		208/230/1/60
MIN. BRCH. CIR. AMPACITY		20
BR. CIR. PROT. RTG. — MAX. (AMPS)		35
COMPRESSOR		CLIMATUFF® - SCROLL
NO. USED - NO. STAGES		1 - 2
VOLTS/PH/HZ		208/230/1/60
R.L. AMPS ⑦ - L.R. AMPS		15.3 - 83
FACTORY INSTALLED		
START COMPONENTS ⑧		NO (Uses BAYKSKT266)
INSULATION/SOUND BLANKET		NO
COMPRESSOR HEAT		YES
OUTDOOR FAN		PROPELLER
DIA. (IN.) - NO. USED		27.6 - 1
TYPE DRIVE - NO. SPEEDS		DIRECT - 1
CFM @ 0.0 IN. W.G. ④		3700
NO. MOTORS - HP		1 - 1/8
MOTOR SPEED R.P.M.		835
VOLTS/PH/HZ		200/230/1/60
F.L. AMPS		0.77
OUTDOOR COIL — TYPE		SPINE FIN™
ROWS - F.P.I.		1 - 24
FACE AREA (SQ. FT.)		30.79
TUBE SIZE (IN.)		3/8
REFRIGERANT CONTROL		EEV
REFRIGERANT		R-410A
LBS. — R-410A (O.D. UNIT) ⑤		10 LBS.- 15 OZ.
FACTORY SUPPLIED		YES
LINE SIZE - IN. O.D. GAS ⑥		3/4
LINE SIZE - IN. O.D. LIQ. ⑥		3/8
CHARGING SPECIFICATION		
SUBCOOLING		9°F
DIMENSIONS		H X W X D
CRATED (IN.)		55.6 X 35.1 X 38.7
WEIGHT		
SHIPPING (LBS.)		307
NET (LBS.)		257

- ① Certified in accordance with the Air-Source Unitary Air-conditioner Equipment certification program, which is based on AHRI standard 210/240. In order to achieve AHRI standard rating, the indoor fan time delay on the comfort control must be enabled.
- ② Rated in accordance with AHRI standard 270.
- ③ Calculated in accordance with Natl. Elec. Codes. Use only HACR circuit breakers or fuses.
- ④ Standard Air — Dry Coil — Outdoor
- ⑤ This value approximate. For more precise value see unit nameplate.
- ⑥ Max. linear length 60 ft.; Max. lift - Suction 25 ft.; Max lift - Liquid 25 ft. For greater length consult refrigerant piping software Pub. No. 32-3312-0* (* denotes latest revision).
- ⑦ This value shown for compressor RLA on the unit nameplate and on this specification sheet is used to compute minimum branch circuit ampacity and max. fuse size. The value shown is the branch circuit selection current.
- ⑧ No means no start components. Yes means quick start kit components. PTC means positive temperature coefficient starter.

MODEL	BASE	A	B	C	D	E	F	G	H	J	K
4TWX7036E	4	1307.024 (51.435)	946 (37-1/4)	870 (34-1/4)	3/4	3/8	152 (6)	98 (3-7/8)	219 (8-5/8)	86 (3-3/8)	668.024 (26.31)

Sound Power Level

Model	A-Weighted Sound Power Level [dB(A)]	Full Octave Sound Power [dB]							
		63 Hz	125 Hz	250 Hz	500 Hz	1000 Hz	2000 Hz	4000 Hz	8000 Hz
4TWX7036E	72	66	66	64	64	63	57	54	48

Note: Rated in accordance with AHRI Standard 270-2008

Mechanical Specification Options

General

The outdoor condensing units are factory charged with the system charge required for the outdoor condensing unit, ten (10) feet of tested connecting line, and the smallest rated indoor evaporative coil match. This unit is designed to operate at outdoor ambient temperatures as high as 115°F. Cooling capacities are matched with a wide selection of air handlers and furnace coils that are AHRI certified. The unit shall be certified to UL 1995. Exterior is designed for outdoor application.

Casing

Unit casing is constructed of heavy gauge, G60 galvanized steel and painted with a weather-resistant powder paint on all louvers and panels. Corrosion and weatherproof CMBP-G30 DuraTuff™ base.

Refrigerant Controls

Refrigeration system controls include condenser fan, compressor contactor and high pressure switch. High and low pressure controls are inherent to the compressor. A factory installed liquid line drier is standard.

Compressor

The Climatuff® 2-stage compressor features internal over temperature and pressure protection and hermetic motor. Other features include: roto lock suction and discharge refrigerant connections, centrifugal oil pump and modular plugs for electrical connections.

Condenser Coil

The outdoor coil provides low airflow resistance and efficient heat transfer. The coil is protected on all four sides by louvered panels.

Low Ambient Cooling

As manufactured, this unit has a cooling capability to 55°F. For low ambient cooling below 55° see Application Guide APP-APG013-EN.



Trane - by Trane Technologies (NYSE: TT), a global climate innovator - creates comfortable, energy efficient indoor environments for commercial and residential applications. For more information, please visit trane.com or tranetechnologies.com.



The AHRI Certified mark indicates Trane U.S. Inc. participation in the AHRI Certification program. For verification of individual certified products, go to ahridirectory.org.

Trane has a policy of continuous data improvement and it reserves the right to change design and specifications without notice. We are committed to using environmentally conscious print practices.