



COMMERCIAL OUTBOARD RANGE

MERCURY[®] | SEAPRO



 **MERCURY**
SeaPro

BUILT ON TRUST. PROVEN TO PERFORM. TRUSTED FOR RELIABILITY.

Mercury SeaPro commercial outboards are built to work as hard as you do purpose, engineered for commercial use and designed to be ultra-resilient partners for those who make their living on the water. From 15hp to 500hp SeaPro Outboards have earned their credentials for reliability by performing under the toughest working conditions possible to deliver trouble-free operation year after year

Since 1939, Mercury has been a name you can trust and when your livelihood depends on the water, a reliable engine isn't optional it's essential.

Every SeaPro outboard features unique components specifically calibrated to cope with the additional demands of professional operation.

Mercury SeaPro outboards deliver the power, speed, and durability that commercial boating demands, year in, year out.

RIGOROUS TESTING = LEGENDARY DURABILITY

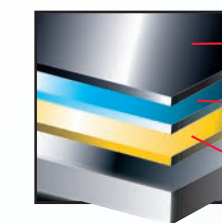
Whatever you decide to put your Mercury engine through we've already done it.

We test our engines rigorously putting them through the toughest possible conditions to ensure ultimate reliability, putting our engines through vicious log strikes, saltwater spray booths, high humidity chambers and hot and cold water temperatures. Each engine is then run for thousands of hours to prove its undeniable durability.

We not only test our engines meticulously but also support them with leading corrosion protection and warranties.



MERCFUSION PAINT SYSTEM



Powder Paint (Top Coat)
Thicker, Harder & Tougher

EDP (Electro-Deposition Priming)
Seals out the Environment

Irridite (Metal prep & sealing)
Provides highly resistant barrier

MERCFUSION PAINT PROCESS

MercFusion, is a proprietary paint process engineered to handle the extreme marine environment. Using both manual and robotic applications, Mercury's own low copper aluminium is coated with a chemical film called irridente that creates a corrosion barrier and lays a base to which the paint can adhere. Next, an electro-deposition paint primer is applied.

The powder paint top coat contains special polymers – designed by Mercury – to adhere better and longer. Once the finish is thermo-cured, the result is a harder, thicker and tougher finish than provided by any other brand.

CORROSION RESISTANCE

A collection of corrosion blocking defenses have been built in so we can offer an industry leading 3 year corrosion warranty. It starts with superior metals, intelligently designed cowlings and sealed electricals to keep the water out. We then use more stainless steel components, add sacrificial anodes and finish it all off with a multi stage MercFusion Paint Process.



SEAPRO COMMERCIAL WARRANTY

SeaPros are engineered for the long term, with the 3 year (2+1 year) SeaPro Warranty* coverage to prove it. Your investment is well protected with a vast network of sales and service dealers throughout Australia & New Zealand, Mercury Marine will always be here to help you with whatever it is you need.

* SeaPro 3 year (2+1 year) warranty coverage for Australia & New Zealand region only.



IN IT FOR THE LONG HAUL

Fuel Efficiency That Pays Off

SeaPro outboards are calibrated for fuel efficiency without compromising on performance. Advanced Range Optimisation ensures peak efficiency on 91 RON fuel, ideal when fuel costs matter. Lightweight and tuned performance, SeaPro engines help commercial operators go further on less while delivering consistent performance.

Maintenance Made Simple

SeaPro engines are built to reduce downtime. With easy access service points, top cowl oil checks and on the water gearcase oil changes, maintenance is quick and hassle-free. A maintenance-free valve train cuts long-term servicing costs, keeping your engine, and your operation, running efficiently.

Performance You Can Rely On

From 15hp to 500hp, SeaPro outboards deliver dependable performance for every task. High-displacement lightweight engines offers more torque at lower RPMs provide elite on-plane performance and top speed. High-output alternators and stiffened Upper mounts twice as stiff as recreational models means SeaPro engines are built to handle the demands of long hours and harsh conditions.

Smarter Technology, Built In

Every SeaPro is loaded with commercial-grade features including high-output alternators and reinforced engine mounts. From 25hp and above, SmartCraft digital displays provide real-time performance data and diagnostics, helping operators monitor their engine and make informed decisions on the go.

Mercury propellers. The right way forward.

After your engine, your propeller is the single most important factor in how your boat performs.

Affecting everything from:
Handling > Engine Life > Speed >
Acceleration > Fuel Economy > Safety

Mercury is the world's largest propeller designer and manufacturer with over 700 propellers in our range.

We have the best props for every application, from custom racing to 2.5hp portables. Mercury propellers are proven for superior strength and all-round performance.

Speak to your dealer about the right propeller for your needs or use our online propeller selector.

FIND OUT MORE



SEAPRO 500HP

7.6L V12 AMS

OUR MOST INNOVATIVE, MOST POWERFUL & CAPABLE COMMERCIAL OUTBOARD YET.

Immense Power & Displacement

The marine industry's first V12 outboard, with a 7.6-litre displacement and quad-cam design, delivers superior torque to power big boats and boosts hole shot, acceleration and mid-range punch. It also reduces engine stress, enhancing both reliability and efficiency.

Innovative Steerable Gearcase

Unlike conventional outboards, the V12 SeaPro features a steerable gearcase that reduces transom-mounted weight and allows tighter 27-inch centre-to-centre mounting. Smooth electric steering and Digital Throttle and Shift (DTS) controls respond instantly for precise manoeuvrability around docks and effortless handling in open water.

Industry-First Two-Speed Transmission

The V12 SeaPro introduces the first-ever two-speed automatic transmission in an outboard. Shifting takes place within the transmission, eliminating shift clunk and improving low speed maneuverability, especially when paired with optional joystick control. Dual forward gears provide strong hole-shot acceleration, mid-range thrust and higher top-end speed for a smoother boating experience.

Whisper Quiet & Smooth

The V12 SeaPro sets a new standard for reduced noise, vibration and harshness, with features including fuel injector covers, a sound-dampening cowl and Advanced Mid-Section (AMS). It is up to 5% quieter than a 25hp competitor at idle, 21% quieter than a 150hp at cruise and 70% quieter than a 350hp at wide-open throttle.

Durability, Reliability & Maintenance

- ▶ Multi-port fuel injection reduces complexity and cost while providing a robust and reliable fuel system.
- ▶ 150 Amp Alternator with Idle charge management maintains battery power during low-speed commercial operations by increasing rpm to boost alternator output.
- ▶ Convenient service hood allows 200-hour maintenance to be done in-water, with no cowl removal needed until 1,000 hours reducing down time.

Performance

- ▶ The closed-loop fuel system uses oxygen sensors to automatically adjust the fuel mixture for maximum efficiency and performance.
- ▶ Performance Tuned intake providing higher intake velocity and packing more air into the cylinders boosting hole shot performance.
- ▶ Transient Spark Technology which optimises fuelling and spark timing boosting.

Fuel Efficiency

- ▶ Advanced Range Optimisation (ARO) precisely adjusts fuel delivery for the best possible efficiency at cruise
- ▶ Provides peak performance with 87-octane fuel reducing overall fuel costs.



SEAPRO 350HP

5.7L V10 AMS

THE SEAPRO 350HP 5.7L V10 DELIVERING HEAVY-DUTY POWER WITH EVERYDAY COMFORT.

Class-Leading Displacement

The V10 SeaPro delivers class-leading 5.7L displacement, generating exceptional torque and power with reduced engine stress boosting reliability and efficiency. Its high torque at lower rpm improves hole shot, acceleration and midrange punch, allowing commercial operators to push engine performance without compromising the engine's long-term durability.

Advanced Mid-Section (AMS)

Perimeter-style mounts isolate the powerhead to reduce vibration, noise, and hull crabbing, protecting the engine in tough weather conditions. The unique placement minimises steering play and side thrust, while enabling compatibility with Mercury's exclusive Electric Steering, Joystick Piloting, and Joystick Steering for effortless handling and improved vessel control.

Heavy Duty Gearcase

The V10 SeaPro's rugged 6.4-inch gearcase is engineered for heavy commercial loads, with advanced hydrodynamics for superior control and efficiency. Validated to last three times longer than recreational gearcases, it delivers the durability needed for high-demand operations without compromising performance.

Advanced Range Optimisation (ARO)

Cruising is more efficient thanks to Advanced Range Optimization and a closed-loop fuel system that constantly adjusts the air-to-fuel ratio. Combined with the ability to run on standard 91 RON fuel, the V10 SeaPro helps commercial operators save at the pump while still delivering full performance.

Built-In Intelligence for Demanding Operations

- ▶ Advanced Range Optimisation (ARO) precisely adjusts fuel delivery for the best possible efficiency at cruise.
- ▶ Transient Spark Technology optimises spark timing and fuelling, boosting torque to improving hole shot.
- ▶ Idle charge battery management system monitors battery voltage and automatically adjusts RPM when idle to boost alternator output.

Enhanced Comfort and Control

- ▶ Adaptive Speed Control (ADS) maintains engine RPM despite changes in load or conditions, with no throttle adjustment.
- ▶ Precision-tuned intake and exhaust, combined with fuel-injector covers, minimise noise and is 28% quieter at cruise than a leading competitor.
- ▶ Standard Digital Throttle & Shift (DTS) delivers smooth quiet shifting and instant throttle response for an unmatched driving experience.
- ▶ Optional electric steering enables compatibility for Mercury's Joystick piloting for effortless, fingertip control, shift and steering.

Maximum Uptime. Minimal Maintenance

- ▶ The top-cowl access door lets you check or top up oil without removing the cowl. Gearcase oil drains easily from the torpedo.
- ▶ Compact 26-inch mounting matches V6 and V8 models for easier repowers and new installations.
- ▶ Multi-port fuel injection reduces systems cost and complexity providing requiring just one fuel pump.



SEAPRO 300HP

4.6L V8 AMS

**MORE DISPLACEMENT AND MORE POWER.
MORE DURABILITY AND MORE EFFICIENCY.**

**THE SEAPRO 300HP V8 OUTBOARD BRINGS
MORE OF EVERYTHING TO THE JOB.**

Class Leading Performance

At 4.6 litres or 279 cubic inches, this V8 design works less to produce more torque and horsepower. Extra cylinders mean more displacement. 32 Valve Dual Overhead Cam means more air. Low internal friction design and an Advanced Lubrication system means more power. The perfect combination for a commercial outboard.

Transient Spark Technology

Mercury's proprietary Transient Spark technology, boosts torque by as much as 7% during hole shot by optimising spark timing and fuelling, gets boats on plane quickly.

Maximised Fuel economy with ARO & Adaptive Speed Control

Adaptive Speed Control automatically maintains set rpm through changing load or sea conditions, reducing the need for throttle adjustments. At cruising speed, Advanced Range Optimisation (ARO) seamlessly adjusts fuel delivery for optimal efficiency helping operators go further on less fuel without any impact on performance or ride quality.

Advanced Midsection (AMS)

The 300hp SeaPro Verado comes with the exclusive Advanced MidSection (AMS), virtually eliminate vibration from being transmitted to the boat. In fact, transmitted vibration is a whopping 60% less than the leading competitor's 300hp engine. Models featuring the Advanced MidSection also feature electric steering as standard.

Engineered for maximum Durability and Reliability.

- ▶ The gearcase oil is drained through the torpedo, which means gearcase oil can be changed in or out of the water - simply tilt the engine up.
- ▶ Unmatched corrosion resistance starts with superior aluminium alloys and coatings, plus four serviceable anodes, including one in the cylinder block.

Smooth Power, Smart Control

- ▶ High-displacement V8 4.6L powerhead delivering loads of torque at a lower rpm with less stress on the engine.
- ▶ Industry-exclusive 115amp battery-management technology with ample charging output to keep Accessories Powered Up.
- ▶ Optional Joystick Piloting provides maximum control and manoeuvrability on both single multi engine applications.
- ▶ Features as standard Next Generation Digital Throttle & Shift (DTS) for smooth, quiet shifting and instant throttle response.

Go Further on Every Drop

- ▶ Mercury's FourStrokes are designed to run on unleaded regular (91 RON) fuel without sacrificing performance or reliability.
- ▶ Lightweight design and Advanced Range Optimization maximize fuel economy at cruise speed.



SEAPRO 225-300HP

4.6L V8

**THE V8 MERCURY SEAPRO FOURSTROKE OUTBOARDS
BRING MORE OF EVERYTHING TO THE JOB.**

GUARANTEED TO DO ITS JOB, SO YOU CAN DO YOURS.

Lightest in its Class

A 4.6L V8 weighing in at only 239kg. These V8's FourStrokes are the lightest models available. Every component in Mercury's V8 has been engineered to meet stringent targets at the absolute minimum weight. The SeaPro engines are extremely compact, and light yet deliver ample torque that makes these outboards ideal power for heavily loaded boats.

Class Leading Displacement

At 4.6 litres or 279 cubic inches, this V8 design works less to produce more torque and horsepower. This robust design allows the engine to spool up into its power curve more rapidly delivering best in performance, reliability and efficiency.

Top Cowl Service Door

No longer do you have to remove the cowl for simple service checks such as checking the oil level or oil fill (if needed). For easy cowl removal, open the top cowl service door, push the red button then lift the handle to unlatch the cowl. The handle also acts as a carrying handle.

Electronically-Actuated Throttle & Shift

All V8's are equipped with a new, custom designed rotary shift actuator that executes extra smooth shifting. Electronic Throttle Body throttle operation is now controlled by an electronic valve. Providing a smooth, low effort shift and throttle operation!

Durability, Reliability & Maintenance

- ▶ Exceptionally lightweight design and Advanced Range Optimisation maximise Fuel Economy at cruise.
- ▶ Easy to perform regular maintenance tasks
- ▶ The gearcase oil is drained through the torpedo, which means gearcase oil can be changed in or out of the water - simply tilt the engine up.

Top Performance

- ▶ Industry-exclusive 85amp battery-management technology with ample charging output and keeps accessories powered up.
- ▶ Mercury outboards are designed to run on regular unleaded (91 RON) fuel without sacrificing performance or reliability.



A large, black Mercury SeaPro 200HP outboard motor is shown from a low angle, dominating the left and right sides of the frame. The motor features the 'MERCURY' brand name, '200' horsepower rating, and 'V6' engine type. The background is a bright, blue sky with white clouds. The motor's cowling has a silver-colored vent on the left side. The overall image conveys a sense of power and reliability for commercial fishing or heavy-duty recreational use.

SEAPRO 200HP

3.4L V6

START STRONG. WORK HARD. STAY TOUGH.

**THE 3.4L V6 SEAPRO IS BUILT TO ENDURE
RELENTLESS COMMERCIAL DEMANDS,
DELIVERING LASTING POWER AND RELIABILITY.**

Lightest 200hp in its Class

A V6 3.4L weighing in at only 223kg. The 200hp is the lightest 200hp FourStroke available today. Every component in Mercury's V6 has been engineered to meet stringent targets at the absolute minimum weight. Provides a broader range of hulls for re-power and improves hull performance, handling and efficiency.

Class Leading Displacement

At 3.4 litres or 209 cubic inches, this V6 design works less to produce more torque and horsepower. The robust design allows the engine to spool up into its power curve more rapidly delivering best in performance, reliability and efficiency.

SeaPro - Centralised Motor Mounts

The new upper robust one-piece mount works in harmony with the lower mounts to isolate overall vibration increasing durability while providing smooth, quiet overall operation.

High Output 85AMP (1071Watt) Alternator

The compact top-mounted alternator provides class leading "On Demand" charging ensures use of electronics, pumps and other accessories with a NET Charge to Battery 25Amps at 600RPM and 60Amps at WOT keeping equipment & accessories powered up.

Maximum Durability, Reliability & Longevity

- ▶ A Top Cowl Service Door, an industry-exclusive, simplifies routine maintenance with easy oil checks and oil fills without removing the cowl.
- ▶ Commercial warranty to match rigors of high-hour commercial operation.
- ▶ A heavy-duty gearcase tested at three times the lifespan of a recreational gearcase.
- ▶ The gearcase oil is drained through the torpedo, which means gearcase oil can be changed in or out of the water - simply tilt the engine up.

Performance, Control & Comfort

- ▶ Tuned to make full power on regular unleaded (91 RON) fuel to deliver maximum fuel savings.
- ▶ Compatible with mechanical or digital controls, hydraulic or electro- hydraulic steering and Mercury's Big Tiller.
- ▶ Improved throttle response and drivability.
- ▶ Exceptionally smooth and quiet.



SEAPRO 150HP

BUILT TO DEVELOP TORQUE LOADS WITH REDUCED STRESS TO ENSURE LONG TERM DURABILITY.

Stiffer Upper Mounts

New upper mounts are designed to produce less noise and vibration. On the SeaPro range they're also twice as stiff as the recreational models in order to maximise durability. Their longevity makes them ideally suited to the demands and rigours of commercial applications.

Easy Oil Drainage & Fill

The gear-case oil is drained through the torpedo, which means the engine doesn't have to come out of the water – it's simply tilted forward.

High Displacement

Higher displacement equals more torque. The SeaPro 3.0L 150hp FourStroke has plenty of it, which allows it to churn out power without breaking sweat. Greater horsepower and lower weight equal better acceleration, providing better handling and control.

Easy to Gauge

Accurate digital information is presented in a clean, easy-to-read gauge for instant, reliable information at a glance. Combined with additional sensors, Mercury's digital gauges are powerful tools, providing safety and comfort while on the water.

Maximum Durability, Reliability & Longevity

- ▶ The SeaPro 150hp FourStroke weighs just 206kgs and has almost 20% fewer parts than its competitors.
- ▶ Maintenance-Free Valve Train lowering cost of ownership.
- ▶ More stainless steel for longevity.
- ▶ Sacrificial aluminium anodes and extensive use of stainless-steel increases corrosion protection.
- ▶ Exclusive oil cooler and sump maintains correct oil temperature, enhances performance and extends the life of the engine.

Performance, Control & Comfort

- ▶ Fewer moving parts for less friction and greater reliability; quiet operation making conversation easy.
- ▶ Best-in-class on demand Battery charging system to ensure optimum power to all your electronic accessories.
- ▶ Focused engine mount system and optimum mount design reduce overall vibration while improving durability for comfort and long-term performance.
- ▶ SeaPro 150hp FourStrokes are available with Mercury's Big Tiller giving commercial operators just what they want – more room in the boat and easy hands-on control of their engine with integrated shift, trim and throttle controls.





SEAPRO 75-115HP

SEAPRO FOURSTROKE MID-RANGE. UNBRIDLED POWER, COMPACT DESIGN, ROCK-SOLID RELIABILITY AND CLASS-LEADING FUEL EFFICIENCY—THE HARDEST-WORKING MID-RANGE FOURSTROKES YET.

Leading Gear-Case Technology

All 75-115hp SeaPro FourStrokes utilise the Command Thrust gear-case. This heavy-duty gear-case allows users to run an oversized prop, sits deeper in the water and incorporates a different gear case ratio – all designed to improve handling and more easily lift heavier boats.

Easy Oil Drainage & Fill

All 75-115hp SeaPro FourStroke engines include a gear-case oil drain and fill located in the torpedo, which means the engine doesn't have to come out of the water – it's simply tilted forward.

Easy to Gauge

Accurate digital information is presented in a clean, easy-to-read gauge for instant, reliable information at a glance. Combined with additional sensors, Mercury's digital gauges are powerful tools, providing safety and comfort while on the water.

Stiffer Upper Mounts

New upper mounts are designed to produce less noise and vibration. On the SeaPro range they're also stiffer to maximise durability. Their longevity makes them ideally suited to the demands and rigours of commercial applications.

Maximum Durability, Reliability & Longevity

- ▶ Fewer moving parts for less friction and greater reliability.
- ▶ Uncompromising reliability and built to last, from tough and durable components with over 17,000 hours of total testing time.
- ▶ More stainless steel for longevity.
- ▶ Sacrificial aluminium anodes and extensive use of stainless-steel increases corrosion protection.
- ▶ Sealed electrical connections are designed and validated to remain leak-proof.

Performance, Control & Comfort

- ▶ FourStroke technology provides maximum fuel economy, smoothness and uncompromising reliability.
- ▶ At 2.1 litres, the all-new Mercury SeaPro 75-115hp range has one of the largest displacements in its class.
- ▶ Our 115hp is the lightest in its class – it has a similar weight to the competitor's 75-90hp, but it offers over 30% more displacement for 'out-of-the-hole' performance and torque loads to help get the boat on plane while delivering quicker acceleration.
- ▶ Improved engineering technology has packed incredible power into a light, compact outboard, improving power-to-weight ratio and reducing the overall package weight of the boat.
- ▶ Smooth and quiet operation featuring a new, quiet trim pump system, a refined clutch system, sound-absorbent cowl design and a closed-cell acoustic lining in the driveshaft housing chaps – all making conversation easier.





SEAPRO 40-60HP

THE 60 AND 40HP ENGINES OFFER INCREASED DURABILITY AND EASY MAINTENANCE FOR COMMERCIAL USE.

THESE MODELS HAVE ENHANCED FEATURES THAT ARE ENGINEERED FOR HIGH-HOUR APPLICATIONS AND BUILT TO WITHSTAND THE HARSH SALTWATER ENVIRONMENTS.

Anodised Driveshaft Housing

60 and 40hp SeaPro FourStroke engines come standard with an anodised driveshaft housing – decreasing the opportunity for corrosion throughout a vital section of your engine.

Stainless Steel Thermostat

A stainless-steel thermostat comes standard on the 60 and 40hp SeaPro FourStroke engines – improving performance and life in harsh saltwater environments.

Easy Maintenance

A pictorial maintenance decal and owner's manual supplement for the 60 and 40hp SeaPro FourStroke engines makes simple service and maintenance even easier by providing step-by-step instructions.

Engineered for Commercial

Engineered to deliver longer engine life while maintaining the power and performance necessary to get the job done.

Maximum Durability, Reliability & Longevity

- ▶ The 60 and 40hp SeaPro FourStroke engines offer robust upper mounts to increase durability in commercial applications.
- ▶ The gearcase oil is drained through the torpedo, which means gearcase oil can be changed in or out of the water - simply tilt the engine up.
- ▶ Mercury 60 and 40hp SeaPro FourStroke engines offer an improved gas assist trim cylinder, increasing durability in commercial applications.

Performance & Technology

- ▶ The 60 and 40hp SeaPro FourStroke engines have been upgraded to be fully SmartCraft capable. This allows the user to utilise the complete Mercury suite of SmartCraft gauges, keeping a better eye on their engine to make sure it is running right for the long haul.
- ▶ The 60 and 40hp SeaPro FourStroke engines come standard with the Command Thrust gearcase. This heavy-duty gearcase allows users to run a larger propeller, sits deeper in the water and incorporates a 2.33:1 gear ratio – all designed to improve handling and lift larger, heavier boats.

- ▶ Accurate digital information is presented in a clean, easy-to-read gauge for instant, reliable information at a glance. Combined with additional sensors, Mercury digital gauges are powerful tools, providing safety and peace of mind while on the water.
- ▶ 60 and 40hp SeaPro FourStrokes are available with the Mercury Big Tiller. The Big Tiller gives commercial operators just what they want – a longer, more durable tiller handle with integrated shift, trim, and throttle that is easy to reach and use.
- ▶ 18-amp alternator provides superior battery charging capability.





SEAPRO 15-25HP

FOR BIG JOBS IN SMALLER BOATS.

IT'S HARD TO BEAT THE CAPABILITIES OF MERCURY 25 AND 15HP SEAPRO OUTBOARDS.

Big Performance in a Small Package

SeaPro outboards combine lightweight design with high-output performance. High-displacement powerheads and performance-tuned intakes deliver strong torque and acceleration, while reduced internal friction enhances efficiency. Easy to carry and quick to plane, they're ideal for demanding small-boat commercial work.

Reliable Starts. Zero Complications.

The SeaPro's Battery-Free EFI system eliminates the need for a battery, offering fast, consistent manual starts even in tough conditions. It delivers smooth operation and crisp throttle response while optimising fuel use through changing weather and elevations. The pressurised system reduces maintenance and improves reliability for commercial use.

Ambidextrous Tiller for Ultimate Control

Mercury's centre-mounted, multi-function tiller is built for all-day comfort and control. It features reversible throttle grip, plus horizontal and vertical adjustments. A forward-mounted shift lever and friction knob ensure smooth, precise operation tailored to any operator.

SmartCraft Intelligence on the Water

Standard on 25hp SeaPro outboards, SmartCraft technology gives commercial operators real-time visibility and control. From digital gauges to touchscreen Vessel View displays, you stay connected to critical engine data. Features like Troll Control let you dial in speed, adjusting RPM in 10-rpm increments for smoother, more efficient operation.

Durability, Reliability & Maintenance

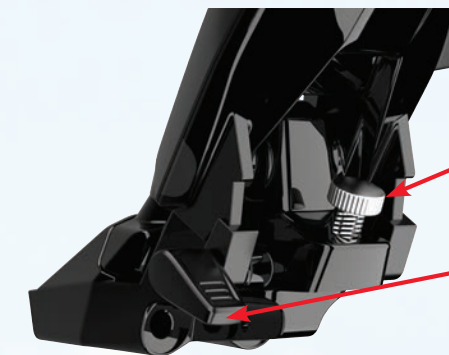
- ▶ Durable alloys and serviceable anodes protect against corrosion in harsh conditions.
- ▶ Class-leading alternator provides powerful battery-charging output at all speeds.
- ▶ Reduced down time no-spill oil change system, easy-out fuel filter.
- ▶ Lifetime maintenance-free valve train and a gearcase that will fully drain from any tilt position.

Performance

- ▶ Lightweight design offers enhanced portability and improved performance.
- ▶ High-volume air intake boosts torque for moving heavy loads with ease.
- ▶ Smooth, quiet operation promotes comfortable all-day driving.

Fuel Efficiency

- ▶ Lightweight and efficient design reduces overall fuel consumption.
- ▶ Optimised performance on Regular Unleaded (91Ron) means savings at the pump.



The adjustable vertical down stop sets the tiller at a comfortable operating position.

The tiller vertical angle locks at 73 degrees to create more boat space for the driver.



GAUGE OPTIONS

ONLY MERCURY MARINE HAS SMARTCRAFT

SmartCraft gauges bring all your vessel's information together onto one simple-to-navigate device giving you the vital information that you need to make good decisions on the water. **Available on Mercury SeaPro engines from 25hp and above. SmartCraft provides you with a full picture of your fuel consumption, range, remaining fuel and much more* at the push of a button.**

VESSELVIEW 703/903

The premier 7" or 9" touchscreen displays from Mercury lead the way in the recreational marine industry and puts the power at the captain's fingertips to control much more than just the engines. With all the features of the smaller VesselView 502 plus autopilot, video inputs, and ability to pair with Simrad NSS Evo2 accessories, this is one control system you will wonder how you did without. Bring Radar, Sonar, fish finder, Sonic hub/Fusion link, c-zone switching and more to your vessel and link directly to your iPad/iPhone via Wi-Fi for updates or as an additional display.



VESSELVIEW 502

This 5" high definition glare reducing glass touchscreen will open up a whole new world of possibilities. Feature packed with a built in 10Hz GPS and Chart Plotter compatibility#, and capable of simultaneously displaying information for up to 4 engines, the 502 will be the central hub for your boat's electronic systems. Wired NMEA 2000, Wi-Fi and Bluetooth capability allows seamless linking to Genset, HVAC and any NMEA 2000 devices.



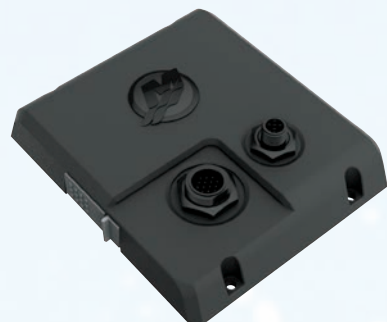
VESSELVIEW 403

Featuring a 4" glass screen with a glare-reducing coating, the VesselView 403 is a great value option for single and twin engine boats. Access over 30 engine parameters with help from an adaptive screen, that automatically presents crucial information and empowers any captain from novice to professional. Standard features include ECO screen, Troll Control, Cruise Control, and SmartTow (some features require DTS) and an NMEA 2000 Gateway allowing SmartCraft data to be displayed on NMEA 2000 devices.



* May require optional sensors

SmartCraft



VESSELVIEW LINK

Ideal for repowers where the boat is already running selected Simrad or Lowrance instruments. Mercury's VesselView Link integrates Mercury SmartCraft engine data with Simrad NSS & NSO Evo2, or Lowrance HDS Gen 2 Touch or Gen 3 fish finder/chart plotter units. The link provides a fully functioning VesselView user interface on the unit's display plus instant access to advanced Mercury SmartCraft features.

SC1000 - BETTER BOATING MADE EASY

Accurate digital information is presented in a clean, easy-to-read gauge for instant, reliable information at a glance. Combined with additional sensors, Mercury's digital gauges are powerful tools to provide safety and comfort while on the water.



SC1000 - Tach & Speed

SMARTCRAFT CONNECT MOBILE

Mobile monitors engines, all in one convenient, intuitive app. Mobile features include customisable engine performance data displays, notifications and warnings, maps, checklists and maintenance reminders.



ACTIVE TRIM

AUTOMATIC TRIM SYSTEM



The highly intuitive GPS-Based system from Mercury Marine is a must have for experienced and new boaters. Similar to driving an automatic car, all you have to worry about is the throttle and steering.

The Active Trim system automatically adjusts the engine to the optimal trim position. As the boat accelerates, the engine is automatically trimmed out, as the boat slows or turns the engine is automatically trimmed in.

In addition to making boating effortless, Active Trim increases fuel economy allowing you to spend more time on the water.

Active Trim suits all Mercury FourStroke Outboard engines from 40-400hp and can be controlled by the dedicated Active Trim pad, or selected VesselView touchscreen displays.

CONTROL OPTIONS



SIDE-MOUNT CONTROL

Side-mount controls are great for entry-level boat segments. The single-unit control is typically mounted onto the inner wall in close proximity to the steering wheel. As with all Mercury mechanical controls, the soft-grip handles provide comfortable operation for hours on the water.



FLUSH/PANEL MOUNT

The panel flush mount control is ideal for single-engine applications where a lower profile control is desired.



CONSOLE MOUNT CONTROL

The product of choice for centre console, pontoon and larger cruising boats for throttle and shift functions.

DIGITAL OPTIONS



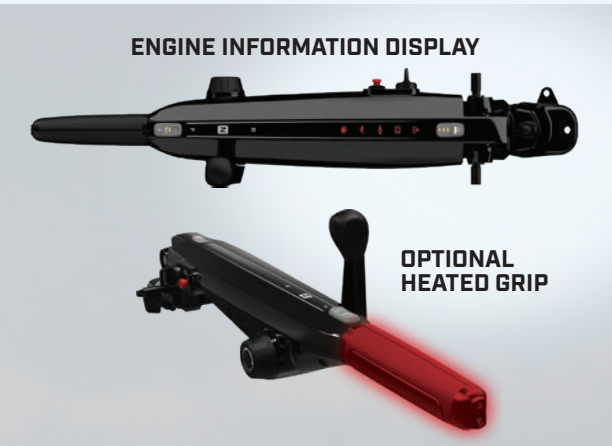
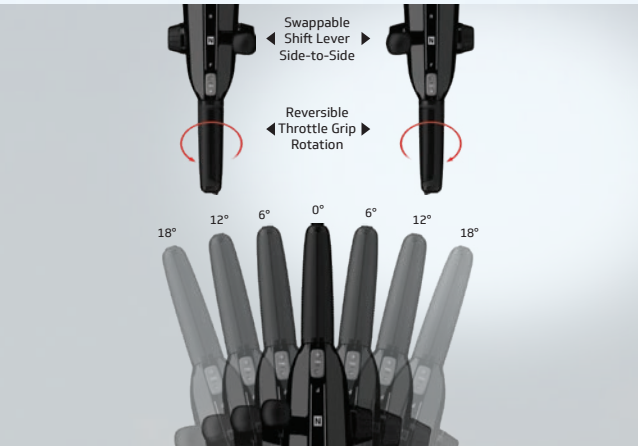
MERCURY NEXT GENERATION DIGITAL THROTTLE & SHIFT (DTS)

Mercury Next Generation Digital Throttle & Shift (DTS) enhances the performance of Mercury propulsion systems by integrating SmartCraft® digital technologies into the most advanced suite of electronic remote controls in the marine space. It's compatible with all Mercury DTS-enabled outboard engines, including the V8 and V6 FourStroke outboards and the Verado® engine family.

TILLER STEERING

ALL-NEW 40HP – 115HP TILLER FOR OUTBOARDS

Whether you are fishing or use your boat for commercial applications, and need the flexibility of a tiller handled outboard for your time on the water, Mercury's new tiller makes boating easier, more comfortable and more enjoyable.



REMOTE STEERING OPTIONS



MERCURY® ELECTRIC STEERING

Delivers smooth, quiet, and highly responsive handling – perfectly paired with Joystick Piloting for Outboards (JPO). Compatible with all V8 and V10 AMS models, it eliminates hydraulics for cleaner rigging, saves space, and cuts power consumption by over 50% compared to previous systems.



HYDRAULIC STEERING

Used on 75hp and above outboard-powered boats. Hydraulic steering utilises hydraulic pressure to reduce the amount of torque or effort that it takes to steer the boat. The result – improved boat performance.



ELECTRO HYDRAULIC STEERING

Designed exclusively for 175-300hp & Verado engines – brings automotive-style power steering to the marine industry. The innovative technology was designed and tested by Mercury Marine to safely control the additional torque and power of larger engines.

ERGONOMIC DESIGN

The new Mercury 40-115hp tiller delivers unmatched comfort, control and safety with the **most angle adjustments on the market.**

- The new and innovative tilt system is controlled with paddles located on either side of the tiller handle.
- The user can easily lock the tiller at broad 12°, 30°, or 55° angles with one hand while underway or stopped. Tilt locks provide stability and comfort.
- Lifting the tiller past 65° automatically disengages the locking mechanism, allowing the tiller to move freely. Leaving the paddles flipped back keeps the tiller in the free, unlocked state. Tiller can be locked at 90° for trailering.
- The down-stop angle can be finely adjusted +/- 7° with a thumb screw to place the throttle grip exactly where it feels best.

ULTIMATE AMBIDEXTROUS CONTROL

Every boat operator should be comfortable steering their boat, and Mercury's new tiller made that happen by:

- Offering the **most side-to-side angle adjustments** for ultimate comfort and control.
- Providing left- or right-hand operation by adjusting the tiller arm's side-to-side angle 18° port and starboard from centre in 6° increments.
- Designing the only tiller with the capability to **swap the shift handle side-to-side** and reverse the throttle-grip rotation.

ADVANCED FEATURES

- **Troll Control** comes standard and allows anglers to dial in precise trolling speeds by tapping a button to **increase or decrease speed in 10rpm increments.** That's five times more precise than the competition's 50rpm increments.
- The integrated **Engine Information Display** delivers visual and audible feedback and a unique alert that instructs operators to attach their safety lanyard cord.
- The **industry's first optional heated grip** offers three levels of heat for cold-weather operation. Anglers can warm their hands after handling their catch, and electronic features prevent excessive battery drain.

JOYSTICK PILOTING FOR OUTBOARDS

Now available for both multi-engine and select single-engine (DTS-equipped) setups from 200hp, Mercury Joystick piloting brings intuitive fingertip control to more boaters than ever.

With a single hand, you can steer, shift, throttle and move diagonally, forward, backward, or rotate in place.

Advanced features include:

- 360° Control – Total directional command for precise manoeuvring (multi-engine only).
- Auto Pilot – Navigate to waypoints via your Multi-Functional Display.
- Skyhook® – Digital anchor holds your position and heading using GPS.
- Auto Heading – Keeps your boat on course automatically.



MERCURY OILS AND LUBRICANTS

Mercury propellers are proven for superior strength, and all-round performance.

Mercury oils and lubricants are specifically engineered for the unique needs of marine engines and rigorously tested to meet our high standards. So you can get the most out of your engine while having total peace of mind that your engine is being protected. Exactly what you should expect from the only marine engine manufacturer 100 % focused on the marine industry for over 80 years.

The best match for your SeaPro engine is the Mercury Synthetic Blend 4-Stroke Outboard Oil.



500-300HP AMS FOURSTROKE SEAPRO PRODUCT SPECIFICATIONS

Specifications	500 AMS	350 AMS	300 AMS
Propshaft Rated Power (hp / kW)	500/373	350/257	300/224
Max RPM at full throttle	5800	5900	5600
Cylinders/engine configuration	V12, 48 Valve Dual Overhead Cam (DOHC)	V10, 40 Valve Dual Overhead Cam (DOHC)	V8, 32-valve Dual Overhead Cam (DOHC)
Displacement (litres)	7.6	5.7	4.6
Bore & Stroke (Inch. / mm)	96mm x 87mm	92mm x 86mm	92mm x 86mm
Induction system	Performance-Tuned Long Runner Intake Manifold	Performance-Tuned Long Runner Intake Manifold	Performance-Tuned Long Runner Intake Manifold
Fuel system	Electronic Fuel Injection (EFI) Computer Controlled with Advanced Range Optimization (ARO)	Electronic Fuel Injection (EFI) Computer Controlled with Advanced Range Optimization (ARO)	Electronic Fuel Injection (EFI)
Fuel requirements	Regular unleaded (90 RON). Max 10% ethanol	Regular unleaded (90 RON). Max 10% ethanol	Regular unleaded (91 RON), Max 10% ethanol
Ignition system	SmartCraft PCM Digital inductive	SmartCraft PCM Digital inductive	SmartCraft PCM Digital inductive
Charging system	150amp with Idle Charge	115 amp with Idle Charge	115 amp with Idle Charge
Starting	Electric Start with SmartStart Protection	Electric Start with SmartStart Protection	Electric Start with SmartStart Protection
Exhaust system	Through prop with Advanced Sound Control	Through prop with Advanced Sound Control	Through prop
Cooling system	Water cooled with thermostat	Water cooled with Thermostat	Water cooled with Thermostat
Oil requirement	NMMA Certified FCW SAE 25W-40	NMMA Certified FCW SAE 25W-40	NMMA Certified FCW SAE 25W-40
Oil capacity (litres)	13.3	9.5	6.6
Engine management system	SmartCraft ECM	SmartCraft ECM	SmartCraft ECM
Engine control system	Digital Throttle & Shift DTS	Digital Throttle & Shift DTS	Digital Throttle & Shift DTS
Engine protection system	SmartCraft Engine Guardian	SmartCraft Engine Guardian	SmartCraft Engine Guardian
Gear shift	F-N-R	F-N-R	F-N-R
Gear ratio	2.50:1	2.08:1	1.75:1
Driveshaft lengths	20" (L) 25" (XL) 30" (XXL) 35" (XXXL)	20" (L) 25" (XL) 30" (XXL) 35" (XXXL)	20" (L) 25" (XL) 30" (XXL)
Counter-rotation	Contra-Rotating Twin Prop	Available	Available
Trim/tilt system ¹ >Maximum tilt range >Maximum trim range	82° [-6° to 76°] 20° [-6° to 14°]	73° [-6° to 67°] 20° [-6° to 14°]	74° [-6° to 67°] 21° [-6° to 14°]
Steering system	Integrated Electro Hydraulic Power Steering or Optional Joystick Piloting for Outboards	Integrated Electro Hydraulic Power Steering or Optional Joystick Piloting for Outboards	Integrated Electro Hydraulic Power Steering or Optional Joystick Piloting for Outboards
Dry weight (kg) ² Lightest Available	572	315	239

¹ As measured on a 13° transom
² Dry weight refers to base engine without liquids, battery cables, throttle/shift cables, bolt-on steering components, mounting hardware, or propeller/hub kits.

300-150 HP FOURSTROKE SEAPRO PRODUCT SPECIFICATIONS

Specifications	300	250	225	200	150
Propshaft Rated Power (hp /kW)	300/224	250/186	225/168	200/149	150/110
Max RPM at full throttle	5600	5600	5600	5400	5300
Cylinders/engine configuration	V8, 32 Valve Dual overhead cam (DOHC)	V8, 32 Valve Dual overhead cam (DOHC)	V8, 32 Valve Dual overhead cam (DOHC)	V6, 24 Valve Dual overhead cam (DOHC)	In-Line 4, 8 Valve single overhead cam (SOHC)
Displacement (litres)	4.6	4.6	4.6	3.4	3.0
Bore & Stroke (Inch. / mm)	3.6 x 3.4 / 92 x 86	3.6 x 3.4 / 92 x 86	3.6 x 3.4 / 92 x 86	3.6 x 3.4 / 92 x 86	4.0 x 3.6 / 102 x 92
Induction system	Performance-Tuned Long runner Intake Manifold	Performance-Tuned Long runner Intake Manifold	Performance-Tuned Long runner Intake Manifold	Performance-Tuned Long runner Intake Manifold	Performance-Tuned Scroll Intake Manifold
Fuel system	EFI ¹	EFI ¹	EFI ¹	EFI ¹	EFI ¹
Fuel requirements	Regular unleaded (91 RON). Maximum 10% ethanol	Regular unleaded (91 RON). Maximum 10% ethanol	Regular unleaded(91 RON). Maximum 10% ethanol	Regular unleaded (91 RON). Maximum 10% ethanol	Regular unleaded (91 RON). Maximum 10% ethanol
Ignition system	SmartCraft ECM digital inductive	SmartCraft ECM digital inductive	SmartCraft ECM digital inductive	SmartCraft ECM digital inductive	SmartCraft ECM digital inductive
Charging system	85A (1071 Watt) with Idle Charge	85A (1071 Watt) with Idle Charge	85A (1071 Watt) with Idle Charge	85A (1071 Watt) with Idle Charge	60A (756 Watt) belt driven alternator
Starting	Electric (turn-key) with SmartStart	Electric (turn-key) with SmartStart	Electric (turn-key) with SmartStart	Electric (turn-key) with SmartStart	Electric (turn-key) with SmartStart
Exhaust system	Through prop	Through prop	Through prop	Through prop	Through prop
Cooling system	Water cooled with thermostat	Water cooled with thermostat	Water cooled with thermostat	Water cooled with thermostat	Water cooled with thermostat
Oil requirement	NMMA Certified FCW SAE 25W-40	NMMA Certified FCW SAE 25W-40	NMMA Certified FCW SAE 25W-40	NMMA Certified FCW SAE 25W-40	NMMA Certified FCW SAE 25W-40
Oil capacity (litres)	6.6	6.6	6.6	6.6	6.0
Engine management system	SmartCraft ECM	SmartCraft ECM	SmartCraft ECM	SmartCraft ECM	SmartCraft ECM
Engine control system	Digital Throttle & Shift DTS	Digital Throttle & Shift DTS	Remote Mechanical or Digital Throttle & Shift DTS	Remote Mechanical or Digital Throttle & Shift DTS	Standard Mechanical Throttle & Shift
Engine protection system	SmartCraft Engine Guardian	SmartCraft Engine Guardian	SmartCraft Engine Guardian	SmartCraft Engine Guardian	SmartCraft Engine Guardian
Gear shift	F-N-R	F-N-R	F-N-R	F-N-R	F-N-R
Gear ratio	1.75:1	1.75:1	1.75:1	1.85:1	1.92:1
Driveshaft lengths	20" (ELPT) 25" (EXLPT) 30" (EXXLPT)	20" (ELPT) 25" (EXLPT) 30" (EXXLPT)	20" (ELPT) 25" (EXLPT) 30" (EXXLPT)	20" (ELPT) 25" (EXLPT)	20" (ELPT) 25" (EXLPT)
Counter-rotation	Available	Available	Available	Available	Available on 25" (CXL) models
Trim/tilt system ² >Maximum tilt range >Maximum trim range	74° (-6° to 67°) 21° (-6° to 14°)	74° (-6° to 67°) 21° (-6° to 14°)	74° (-6° to 67°) 21° (-6° to 14°)	73° (-6° to 67°) 20° (-6° to 14°)	73° (-6° to 67°) 22° (-6° to 14°)
Steering system	Dual Cable Mechanical, Hydraulic EHPS ⁴ - Big Tiller ⁵	Dual Cable Mechanical, Hydraulic EHPS ⁴ - Big Tiller ⁵	Dual Cable Mechanical, Hydraulic EHPS ⁴ - Big Tiller ⁵	Dual Cable Mechanical, Hydraulic EHPS ⁴ - Big Tiller ⁵	Dual Cable Mechanical, Hydraulic EHPS ⁴ - Big Tiller ⁵
Dry weight (kg) ³ Lightest Available	239	239	239	220	206

¹ Computer controlled multi-port electronic fuel injection
² As measured on a 13° transom

³ Dry weight refers to base engine without liquids, battery cables, throttle/shift cables, bolt-on steering components, mounting hardware, or propeller/hub kits.

⁴ EHPS: Electro-hydraulic power steering optional
⁵ Big Tiller optional
⁶ Big Tiller models available

115-15 HP FOURSTROKE SEAPRO PRODUCT SPECIFICATIONS

Specifications	115	90	75	60	40	25	15
Propshaft Rated Power (hp /kW)	115/86	90/67	75/56	60 / 45	40/30	25/18.4	15/11.1
Max RPM at full throttle	5500	5500	5500	5500	5500	5800	5500
Cylinders/engine configuration	In-Line 4, 8-valve single overhead cam (SOHC)	In-Line 4, 8-valve single overhead cam (SOHC)	In-Line 4, 8-valve single overhead cam (SOHC)	In-Line 4, 8-valve single overhead cam (SOHC)	In-Line 4, 8-valve single overhead cam (SOHC)	In-Line 3	In-Line 2
Displacement (litres)	2.1	2.1	2.1	0.995	0.995	0.5	0.333
Bore & Stroke (Inch. / mm)	3.5 x 3.2 / 90 x 81	3.5 x 3.2 / 90 x 81	3.5 x 3.2 / 90 x 81	2.56 x 2.95 / 65 x 75	2.56 x 2.95 / 65 x 75	2.40 x 2.24 / 61 x 57	2.4 x 2.24 / 61 x 57
Induction system	Performance-tuned scroll intake manifold	Performance-tuned scroll intake manifold	Performance-tuned scroll intake manifold	Performance-tuned intake manifold	Performance-tuned intake manifold	Electronic Fuel Injection (EFI)	Electronic Fuel Injection
Fuel system	EFI ¹	EFI ¹	EFI ¹	EFI ¹	EFI ¹	EFI	EFI ¹
Fuel requirements	Regular unleaded (91 RON). Maximum 10% ethanol	Regular unleaded (91 RON). Maximum 10% ethanol	Regular unleaded (91 RON). Maximum 10% ethanol	Regular unleaded (91 RON). Maximum 10% ethanol	Regular unleaded (91 RON). Maximum 10% ethanol	Regular Unleaded (91 RON) Maximum 10% ethanol	Regular unleaded (91 RON). Maximum 10% ethanol
Ignition system	SmartCraft ECM digital inductive	SmartCraft ECM digital inductive	SmartCraft ECM digital inductive	SmartCraft ECM digital inductive	SmartCraft ECM digital inductive	CDI with electronic spark advance	CDI with electronic spark advance
Charging system	35A (441 Watt) stator w/water-cooled voltage regulators	35A (441 Watt) stator w/water-cooled voltage regulators	35A (441 Watt) stator w/water-cooled voltage regulators	18A (226 Watt) stator w/water-cooled voltage regulators	18A (226 Watt) stator w/water-cooled voltage regulators	17-amp (210 Watt)	12-amp (145 Watt)
Starting	Electric (turn-key) with SmartStart	Electric (turn-key) with SmartStart	Electric (turn-key) with SmartStart	Electric (turn-key)	Electric (turn-key)	Manual or Electric	Manual
Exhaust system	Through prop	Through prop	Through prop	Through prop	Through prop	Through prop	Through prop
Cooling system	Water cooled with thermostat	Water cooled with thermostat	Water cooled with thermostat	Water cooled with thermostat	Water cooled with thermostat	Water cooled with Thermostat	Water cooled with thermostat
Oil requirement	NMMA Certified FCW SAE 25W-40	NMMA Certified FCW SAE 25W-40	NMMA Certified FCW SAE 25W-40	NMMA Certified FCW SAE 25W-40	NMMA Certified FCW SAE 25W-40	NMMA Certified FCW SAE 10W-30	NMMA Certified FCW SAE 10W-30
Oil capacity (litres)	5.2	5.2	5.2	2.8	2.8	1.4	1.5
Engine management system	SmartCraft ECM	SmartCraft ECM	SmartCraft ECM	SmartCraft ECM	SmartCraft ECM	SmartCraft ECM	Digital CDI
Engine control system	Standard Mechanical Throttle & Shift	Standard Mechanical Throttle & Shift	Standard Mechanical Throttle & Shift	Standard Mechanical Throttle & Shift	Standard Mechanical Throttle & Shift	Mechanical	Manual Tiller
Engine protection system	SmartCraft Engine Guardian	SmartCraft Engine Guardian	SmartCraft Engine Guardian	SmartCraft Engine Guardian	SmartCraft Engine Guardian	SmartCraft Engine Guardian	Low oil pressure - Over Rev - Overheat - Sensor failure
Gear shift	F-N-R	F-N-R	F-N-R	F-N-R	F-N-R	F-N-R	F-N-R
Gear ratio	2.38:1	2.38:1	2.38:1	2.33:1	2.33:1	2.17:1	2.15:1
Driveshaft lengths	20" (ELPT) 25" (EXLPT)	20" (ELPT) 25" (EXLPT)	20" (ELPT)	20" (L) 22.5" (LL) 25" (XL)	20" (L) 22.5" (LL) 25" (XL)	15" (MH) 20" (MLH) 25" (EL)	15" (MH) 20" (MLH)
Counter-rotation	Available on 25" (CXL) models	Not available	Not available	Not available	Not available	Not Available	Not available
Trim/tilt system ² >Maximum tilt range >Maximum trim range	70° (-6° to 64°) 22° (-6° to 16°)	70° (-6° to 64°) 22° (-6° to 16°)	70° (-6° to 64°) 22° (-6° to 16°)	70° (-6° to 64°) 22° (-6° to 16°)	70° (-6° to 64°) 22° (-6° to 16°)	73° (-8° to 65°) 34° (-8° to 26°)	6 positions 6 positions
Steering system	Dual Cable Mechanical, Hydraulic EHPS ⁴ - Big Tiller ⁵	Dual Cable Mechanical, Hydraulic EHPS ⁴ - Big Tiller ^{5 or 6}	Dual Cable Mechanical, Hydraulic EHPS ⁴ - Big Tiller ^{5 or 6}	Mechanical or Hydraulic - Big Tiller ^{5 or 6}	Mechanical or Hydraulic - Big Tiller ^{5 or 6}	Remote or Tiller	Tiller
Dry weight (kg) ³ Lightest Available	165	165	165	118	118	30.1	47

¹ Computer controlled multi-port electronic fuel injection

⁴ EHPS: Electro-hydraulic power steering optional

² As measured on a 13° transom

⁵ Big Tiller optional

³ Dry weight refers to base engine without liquids, battery cables, throttle/shift cables, bolt-on steering components, mounting hardware, or propeller/hub kits.

⁶ Big Tiller models available

KNOWLEDGE IS POWER

**FIND ENGINE SPECIFICATIONS, BOATER TESTIMONIALS
AND INFORMATIVE COMPARISONS.**

Keep up with all the latest news, deals and info from Mercury Marine Australia, New Zealand.

 www.facebook.com/mercurymarineaustralia

 www.facebook.com/mercurymarinenz

 [mercurymarine_aust](https://www.instagram.com/mercurymarine_aust)

 [mercurymarinenz](https://www.instagram.com/mercurymarinenz)

 www.youtube.com/user/MercuryMarineAU

[mercurymarine.com.au](https://www.mercurymarine.com.au)

[mercurymarine.co.nz](https://www.mercurymarine.co.nz)



© 2025 Mercury Marine. Mercury, Mercury Outboards, Verado, Pro XS, SmartCraft, SeaPro and Quicksilver are registered trademarks with the Mercury and Go Boldly logo being trademarks of the Brunswick Corporation. Please note: Mercury Marine continuously explores means to improve the products it designs, manufactures and distributes. Changes to the specifications of its engines, boats and accessories are ongoing. Every effort is made to produce sales and service literature which is current. This brochure should not be regarded as a precise guide to the latest specifications. This brochure is also not an offer for sales of any particular engine, boat or accessories. Distributors and dealers are not agents of Mercury Marine and they have no authority to bind Mercury Marine by any express undertaking or representation, including but not limited to representations of a product sales, application or service nature. Warranty conditions contained within pertain only to Australia and New Zealand. *For full details on warranty terms and conditions go to: www.mercurymarine.com.au ©2025 MERCURY MARINE, All rights reserved. Reproduction in whole or in part without permission is prohibited.



9 329768 006750

8M18000405