



AVERY TABLE LAMP COPPER

User Guide

MATT BLATT

MBLIBTAVTLA

SAFETY & WARNINGS

Ensure power is completely switched off before installing. Assemble as per the instructions below, and only connect to power when complete.

Notes:

1. Read this user guide carefully before installing the lamp.
2. To protect the lamp and prevent damage or scratches, ensure a soft blanket is laid down. We recommend wearing gloves when assembling the lamp.
3. If the power cord is damaged, cease use immediately. Contact help.kogan.com for support.

SPECIFICATIONS

Power Supply 220V-240V ~50Hz

Base E27 (Edison screw, 27mm)

Wattage Max. 40W

COMPONENTS



A Lamp shade

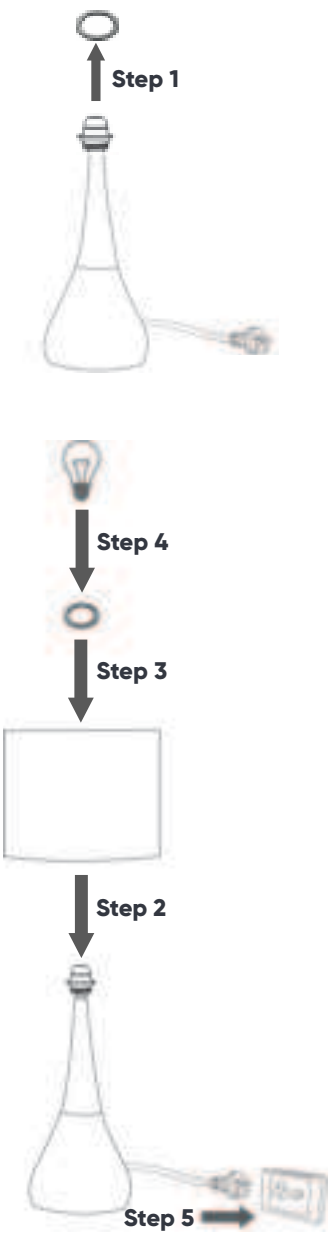


B Base

ASSEMBLY

Note:

The bulb is not included.



NEED MORE INFORMATION?

We hope that this user guide has given you the assistance needed for a simple set-up. For the most up-to-date guide for your product, as well as any additional assistance you may require, head online to **help.mattblatt.com.au**

MATT BLATT