

# X10DR<sup>®</sup>

LIBERATE YOUR MOBILE RADIO

 **WIRELESS PACIFIC<sup>™</sup>**  
...WHEN IT MATTERS

Secure Wireless Microphone



## Programming Parameter Guide

Some features are only applicable to firmware version 4.0 Rev 1.3

## How to install Programmer:

Runs On PC or Mac running Windows 7/10

NOTE: Requires **USB 2.1** Port. The programmer will not work with USB 3 - if your PC only has USB3 ports suggest you attach X10DR device via a usb patch block most are 2.1)

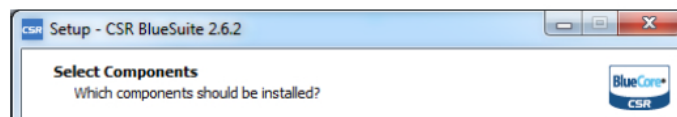
Included with the Programmer download file application are instructions on how to set-up the programmer on your Windows 7/10 PC. Please follow those instructions to install the programmer correctly onto your computer.



## USER PROGRAMMER INSTALLATION GUIDE

The X10DR User Programmer requires two separate programs to be installed.

**Step 1** – Drivers : Install BlueSuite found on [www.x10dr.com](http://www.x10dr.com) (BlueSuite...EXE).  
When given the choice of components to install please select the options shown below.  
(Do not install Core, BlueTest3 or DFU tools).



## How to use Programmer:

Runs On PC running Windows 7/10

Requires **USB 2.1** Port.

### To put Handset into programming mode:

Turn off handset, attach programming cable between device Hirose port and PC then press red handset on/off button while holding PTT. LED will light red.

### To put Gateway into programming mode:

Turn off gateway. Then hold gateway ON/OFF button down while attaching the programming cable to device micro-USB port and PC USB port. The LED will light red. *Note: The gateway's RJ45 socket should **not** be connected to the host radio.*

**Always READ device first before proceeding further.**

**We suggest you SAVE file onto your PC for re-loading if required.**

**A GREYED out feature means your device does support that capability.**

### Read Device

Press to load current programming parameters from device to screen.

### Program Device

Press to load current screen programming parameters to a device.

### Restart (important)

Press to **restart** programmed device before removing programming cable.

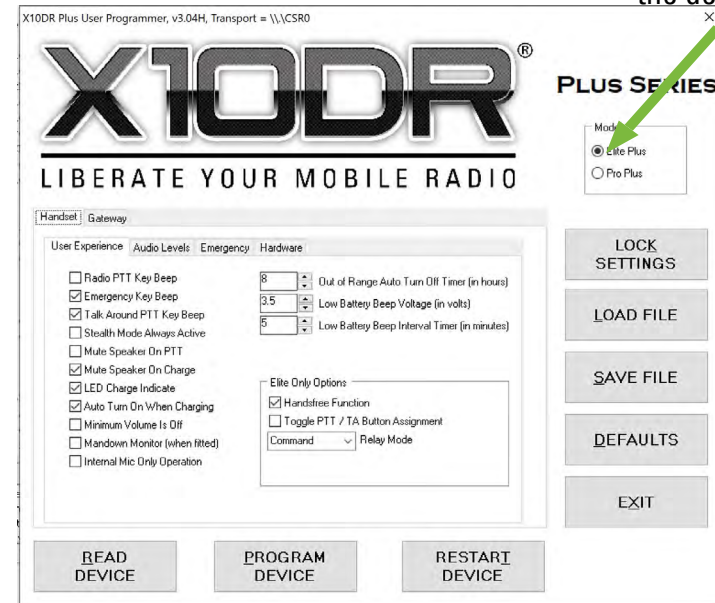
### Lock - Unlock File

Press to lock your desired parameter configuration before undertaking batch fleet programming. This will prevent you errantly changing a parameter unknowingly during reprogramming.

### Load File

Press to load a previously saved programming parameters to device from its saved PC location.

Note: The Programmer automatically identifies the device type



### Save File

Press to save a programming parameters from screen to desired PC location saved location.

### Defaults

Press to reset with default device parameters

### Exit

Press to exit program.

# Handset Parameters







## Programming Feature: Basic functions - Handset

### Radio PTT key beep

Sounds talk permit tone sequence whenever PTT is pressed and handset is in range of its gateway.

**Default - OFF**

### Emergency key beep

Sounds single tone whenever Emergency button is pressed and handset is in range of its gateway.

**Default - ON**

### Talkaround PTT key beep

Sounds talkaround tone sequence whenever Talkaround button is pressed and handset is in range of its gateway. **Default - ON**

### Stealth mode always active

Disables all alert tones and LED status light. User can manually enable stealth mode if programmed off.

**Default - OFF**

### Mute speaker on PTT

Disables all speaker audio whenever PTT is pressed. **Default - OFF**

### Mute speaker on charge

Disables speaker when handset is in gateway or a charger. **Default - ON**

### LED charge indicate

Disables "momentary blink" charge indicate when handset is placed into gateway or a charger and device is charging. **Default - ON**

### Auto turn on when charging

Causes handset to automatically turn on whenever it is placed in gateway or a charger. **Default - On**

### Minimum volume is off

Allows user to turn the speaker audio off instead of level 1. **Default - OFF**

### Mandown Biometric Monitor (when fitted)

Enables/disables function via programmer for Plus handsets fitted with XMD option. **Default - OFF**

### Internal Mic Only Operation

Maintains operation via internal microphone when accessory attached to Hirose port. required for earpiece (WPEH-X10/WPTEP-X10) use via Hirose headset port. **Default - OFF**

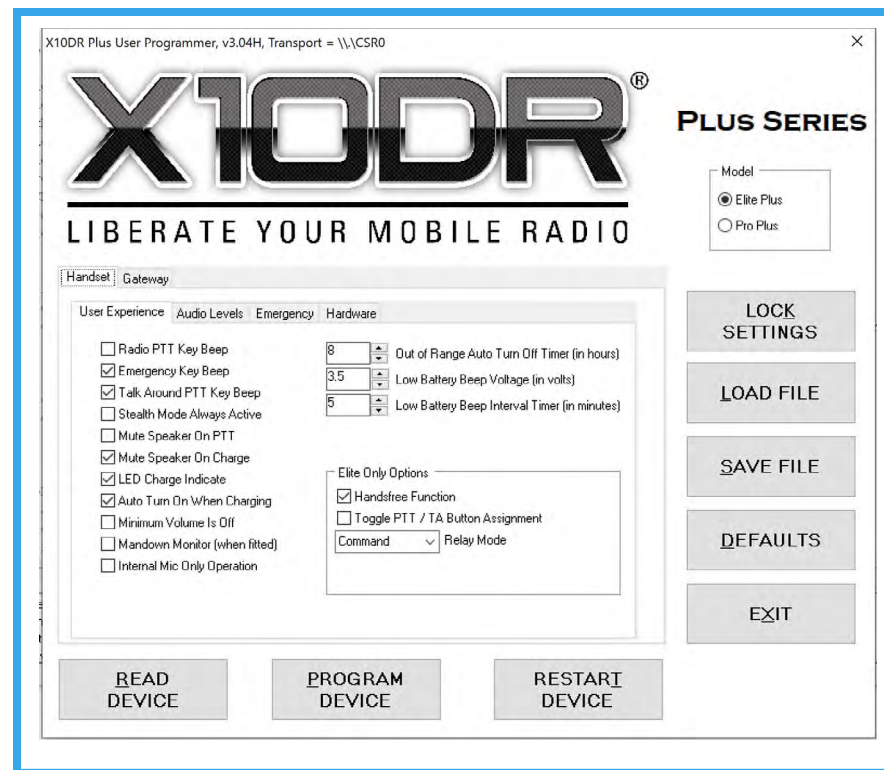
### Out of range turn off time

Sets time in hours that a handset that is not actively connected to a gateway will remain powered on before turning itself off. **Default - 8 hours**

### Low battery beep voltage

Sets the remaining battery voltage that will cause the low battery alert tones to be generated. (for longer shift life you may set voltage lower but you may get less warning before device automatically shuts off.

**Default - 3.5V**



### Low battery beep interval timer

Sets the interval that the low battery alert tones are sounded in the handset.

**Default - 5 minutes**

## ELITE PLUS ONLY OPTIONS

### Handsfree Function (shows "disabled" if feature not enabled)

Enables user selectable handsfree function in Elite Plus handsets

**Default - ON**

### Toggle PTT/TA Button Assignment

Configures handset so that pressing the top grey Control button toggles the side PTT button assignment between host radio PTT and Talkaround or 2nd Radio device PTT /PA Mode when used with XSJB or similar.

**Default - OFF**

### Command Relay Mode / Automatic Relay Mode

Selects the Relay Mode type in Elite Plus handsets.

**Default - Command Relay**



**WIRELESS PACIFIC**  
...WHEN IT MATTERS™



## Programming Feature: Audio Levels - Handset

**Note:** Use the **Gateway Audio Level Adjustment** - XGALA software tool can be downloaded at [www.x10dr.com](http://www.x10dr.com) for setting audio in and out of gateway to host mobile radio.

The following handset adjustments are designed to cater for different audio accessories and/or user applications requiring alternate audio sensitivities to suit different operating conditions.

### Internal Mic Gain

Sets the internal microphone's transmit audio level sensitivity.

**Default - 3**

### Internal Mic High Gain Boost

Sets the internal microphone's sensitivity when "Live Mic" is active.

**Default - 6**

### External Mic Gain

Sets the external microphone's transmit audio level sensitivity.

**Default - 9**

### External Mic High Gain Boost

Sets the external microphone's sensitivity when the X10DR's "Live Mic" is active or when user manually selects high gain by powering up microphone with blue volume up button pressed.

**Default - 6**

### Remote PTT Gain Boost

Increases sensitivity of internal microphone when remote/handlebar PTT is pressed.

**Default - 9**

### Fixed Alert Tone Volume

Limits all user monitored alert tones to level set below rather than being controlled by handset volume controls.

**Default - OFF**

### Alert Tone Volume

Sets the value of the "Fixed Alert Tone" when enabled that a user will hear from their handset.

**Default - 5**



## Programming Feature: Emergency - Handset

*- Applicable when handset is configured for press & hold emergency*

### Audio link active time

Sets the duration the transmit audio is active after Emergency button is released. Feature is intended for those mobiles that activate their own internal "Live Mic" function whenever emergency is triggered. This allows the handset's Tx audio to be broadcast over the radio's transmit channel, (assuming mobile sources "Live Mic" from its external mic input). **Default - 0**

*- Applicable when handset is configured for short/long press emergency*

### Transmit Time

Sets the time duration that X10DR "Live Mic" handset Tx audio is active when Advanced Emergency activated.

**Default - 0**

### Receive Time

Sets the time duration that X10DR "Live Mic" handset Rx audio is active when Advanced Emergency activated.

**Default - 0**

### Emergency repeat cycles

Sets the number of "Live Mic", Tx and Rx cycles when Advanced Emergency is triggered.

**Default - 1**

### Transmit audible emergency tone

Causes an audible emergency warble tone to be transmitted over the host mobile radio channel when emergency is activated.

**Default - Off**

X10DR Plus User Programmer, v3.04G, Transport = \\.\CSRO

**X10DR®**  
LIBERATE YOUR MOBILE RADIO

Plus Series

Model  
☒ Elite Plus  
☐ Pro Plus

Handset Gateway

User Experience Audio Levels Emergency Hardware

Press and Hold Emergency Function  
0 Audio Link Active Time (in second)

Short or Long Press Emergency Function  
0 Transmit Time (in second)  
0 Receive Time (in second)  
1 Emergency Repeat Cycles

☐ Transmit Audible Emergency Tone

LOCK SETTINGS  
LOAD FILE  
SAVE FILE  
DEFAULTS  
EXIT

READ DEVICE PROGRAM DEVICE RESTART DEVICE



## Programming Feature: Hardware - Handset

### Hirose Pin 2 function

Sets Hirose pin 2 to be either BAT+ (~3.8VDC) to power external accessories or bridged output speaker audio when pin 2 is set for speaker negative. **Default - Speaker -VE**

### Acc PTT

Sets whether Hirose PTT input generates Talkaround or Radio PTT. **Default - Radio PTT**

### PTT

Sets function of main large PTT button. Choose from drop down box. **Default - Radio PTT**

### Top 1

Sets function of top left button. Choose from drop down box. **Default - Emergency**

### Top 2

Sets function of top right button. Choose from drop down box. **Default - Talkaround PTT**

### Left 1

Sets function of top left button.

**Default - short press Volume up / Elite Plus only - long press Relay mode off/on**

### Left 2

Sets function of bottom left button.

**Default- short press Volume down**

### Right 1

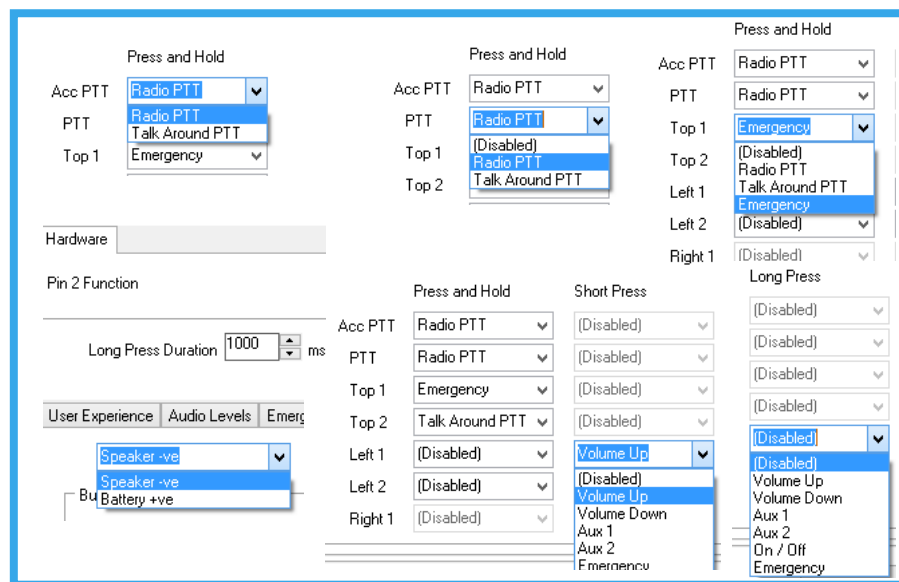
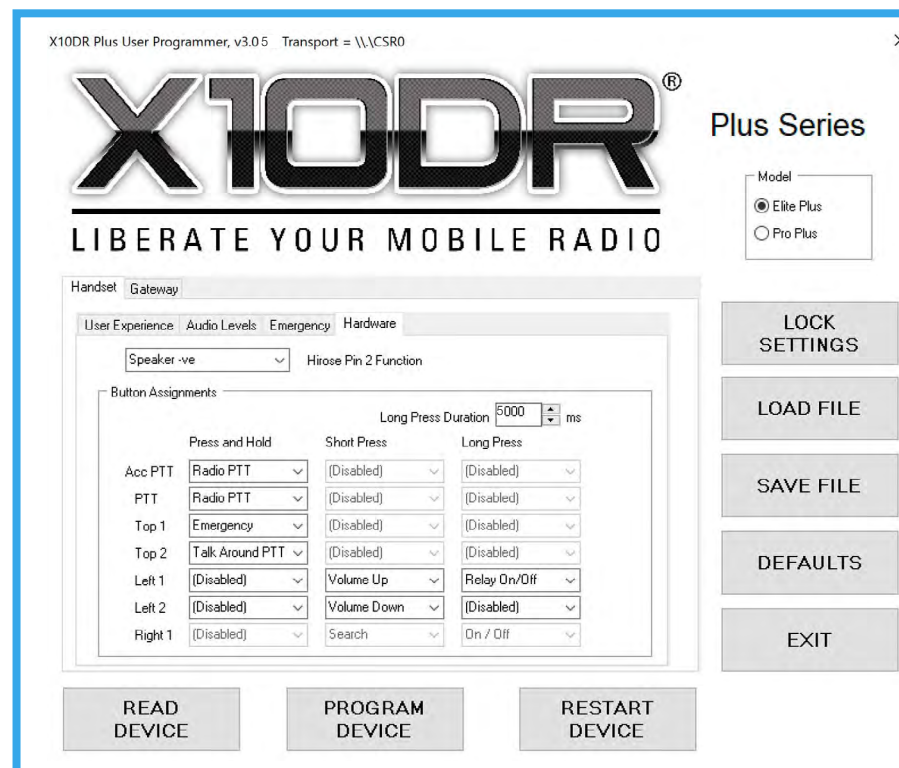
Sets the function of right side button. Re-assigning requires hardware modifications.

**Default - short press Search / long press Power off/on**

### Long Press Duration

Sets time button must be pressed to detect a Long Press.

**Default - 5000mSec**



**WIRELESS PACIFIC**  
...WHEN IT MATTERS™



# Gateway Parameters

**PRO Series**



**ELITE Series**



**Elite Series- X10W**



**XRTG Elite Plus**



Status  
light

**Function Button**  
- Manual Off/On  
- Touchless Pairing  
- Master Reset  
- Find Me



**XIVG Gateway**



## Programming Feature: Audio Levels - Gateway

### Receiver Input Gain From Radio

Sets the receive input sensitivity. **Default - 0**

### Transmit Output Gain To Radio

Sets the audio output level to radio when local/remote /handlebar PTT is pressed or when "Live Mic" is active. **Default - 0**

### Talk Around Output Gain to other X10DRs

Sets the "intercom" microphone audio level. **Default - 0**

### Find Me™ Function

Enables Find Me function in gateway. User double presses gateway **Function** button to trigger Find Me alert tones or triggers Remote FindMe.

**Default - OFF**

### Radio Receive VOX/COR

Enables VOX derived COR. **Default - ON**

### VOX Trigger Level

Sets the gateway's audio detect sensitivity for VOX derived COR. **Default - 70**

### Public Address Mode

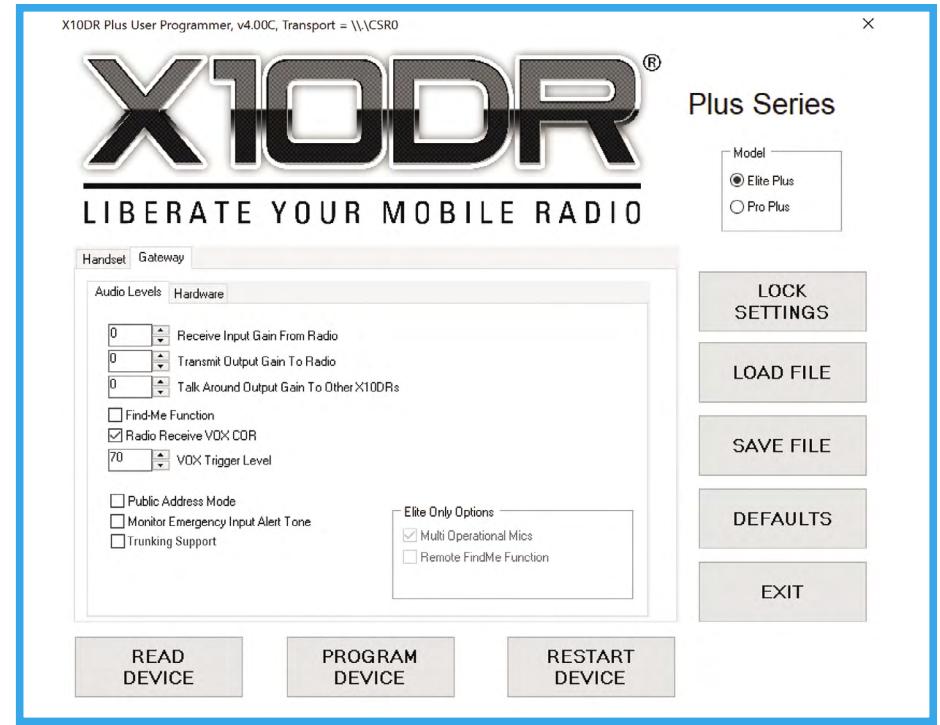
Sets the gateway so only handset Talkaround audio is sent to the gateway 3.5mm jack. When unchecked both Radio PTT and Talkaround audio is available for in-car monitor use. **Default - OFF**

### Monitor Emergency Input Alert Tone

Causes Emergency warble alert tone to sound in all cross connected X10DR handsets whenever emergency input is triggered. (i.e. triggered from another gateway or externally supplied ground input).

**Default - OFF**

*For ease of setting we recommend you use the XGALA Gateway Audio Level Adjustment software tool that can be downloaded from [www.x10dr.com](http://www.x10dr.com) Support page*



### Trunking Support

Enables speaker audio upon PTT for 500mS, so host trunked mobile's Channel Grant /Talk Permit tones can be clearly distinguished by user. Handset Mic audio is also muted for 500mS to prevent those tones being rebroadcast over talkgroup. For optimum performance set VOX trigger level for 90-100 for fastest response.

**Default - OFF**

### ELITE Series Only Options

#### Multi Operational Mics

Allows two or three Elite Series Mics to be simultaneously operational through the one Elite gateway unit.

**Default - ON**

#### Remote Find Me™

Enables Find Me function in gateway via grounding the white wire connected to pin 8 (Replaces Remote PTT function)

**Default - OFF**



## Programming Feature: Hardware - Gateway

### I/O

Defines whether the specific gateway interface pin is assigned as an input or an output.

### Active

Sets whether the interface pin needs to be held low or pulled up high to activate assigned functionality.

### Function

Assigns desired functionality to Interface pin.  
Choose the desired input or output from the dropdown boxes.

### Pulse

Defines the length of time an input must be activated before the function is triggered or alternatively how long an output is activated when the assigned function has been triggered. A value of zero means an input triggers instantly.

X10DR Plus User Programmer, v3.04G, Transport = \\.\CSR0

# X10DR®

LIBERATE YOUR MOBILE RADIO

Plus Series

Model  
☒ Elite Plus  
☐ Pro Plus

LOCK SETTINGS

LOAD FILE

SAVE FILE

DEFAULTS

EXIT

Handset Gateway

Audio Levels Hardware

	I/O	Active	Function	Pulse (ms)
Radio PTT	Output	Low	Radio PTT	0
Radio Emergency	Output	Low	Emergency	0
Radio COR	Input	Low	Radio COR	0
Function 1	Input	Low	Disabled	0
Function 2	Input	Low	Disabled	0
Function 3	Output	Low	Disabled	0
Function 4	Output	Low	Disabled	0
Function 5	Output	High	Handsfree active	0
Function 6	Output	High	Handset in Cradle	0

READ DEVICE PROGRAM DEVICE RESTART DEVICE

	I/O	Active	Function	Pulse (ms)
Radio PTT	Output	Low	Radio PTT	0
Radio Emergency	Output	Low	Emergency	0
Radio COR	Input	Low	Radio COR	0
Function 1	Output	Low	Disabled	500
Function 2	Output	Low	Radio COR	500
Function 3	Output	Low	Remote PTT	0
Function 4	Output	Low	Find Me	0
Function 5	Output	Low	Handset in Cradle	0
Function 6	Output	Low	Handset out of Range	0
Function 7	Output	High	Disabled	100
Function 8	Output	High	Disabled	100

Function	Pulse (ms)
Radio PTT	0
Emergency	0
Disabled	0
Radio PTT	0
Emergency	500
Talk around	500
Aux 1	500
Aux 2	500
Handset in Cradle	0
Handset out of Range	0
Handset out of Range	0
Disabled	100
Disabled	100



# Pro Plus Default settings: Handset - Gateway

X10DR Plus User Programmer, v3.04G, Transport = \\VC5R0

**X10DR®**  
LIBERATE YOUR MOBILE RADIO

Plus Series  
Model  
☐ Elite Plus  
☒ Pro Plus

Handset Gateway

User Experience Audio Levels Emergency Hardware

Speaker vce Hiwse Pin 2 Function

Button Assignments

	Press and Hold	Short Press	Long Press
Acc PTT	Radio PTT	(Disabled)	(Disabled)
PTT	Radio PTT	(Disabled)	(Disabled)
Top 1	Emergency	(Disabled)	(Disabled)
Top 2	Talk Around PTT	(Disabled)	(Disabled)
Left 1	(Disabled)	Volume Up	(Disabled)
Left 2	(Disabled)	Volume Down	(Disabled)
Right 1	(Disabled)	Search	On / Off

Long Press Duration: 5000 ms

LOCK SETTINGS  
LOAD FILE  
SAVE FILE  
DEFAULTS  
EXIT

READ DEVICE PROGRAM DEVICE RESTART DEVICE

X10DR Plus User Programmer, v3.04G, Transport = \\VC5R0

**X10DR®**  
LIBERATE YOUR MOBILE RADIO

Plus Series  
Model  
☐ Elite Plus  
☒ Pro Plus

Handset Gateway

User Experience Audio Levels Emergency Hardware

Internal Mic Gain  
Internal Mic High Gain Boost  
External Mic Gain  
External Mic High Gain Boost  
Remote PTT Gain Boost

Fixed Alert Tone Volume  
Alert Tone Volume

LOCK SETTINGS  
LOAD FILE  
SAVE FILE  
DEFAULTS  
EXIT

READ DEVICE PROGRAM DEVICE RESTART DEVICE

X10DR Plus User Programmer, v3.04G, Transport = \\VC5R0

**X10DR®**  
LIBERATE YOUR MOBILE RADIO

Plus Series  
Model  
☐ Elite Plus  
☒ Pro Plus

Handset Gateway

Audio Levels Hardware

Receive Input Gain From Radio  
Transmit Output Gain To Radio  
Talk Around Output Gain To Other X10DRs

FindMe Function  
Radio Receive VOK COR  
VOK Trigger Level

Public Address Mode  
Monitor Emergency Input Alert Tone

Elite Only Options  
Multi Operational Mics  
Remote FindMe Function

LOCK SETTINGS  
LOAD FILE  
SAVE FILE  
DEFAULTS  
EXIT

READ DEVICE PROGRAM DEVICE RESTART DEVICE

X10DR Plus User Programmer, v3.04G, Transport = \\VC5R0

**X10DR®**  
LIBERATE YOUR MOBILE RADIO

Plus Series  
Model  
☐ Elite Plus  
☒ Pro Plus

Handset Gateway

User Experience Audio Levels Emergency Hardware

Press and Hold Emergency Function  
Audio Link Active Time (in second)

Short or Long Press Emergency Function  
Transmit Time (in second)  
Receive Time (in second)  
Emergency Repeat Cycles

Transmit Audible Emergency Tone

LOCK SETTINGS  
LOAD FILE  
SAVE FILE  
DEFAULTS  
EXIT

READ DEVICE PROGRAM DEVICE RESTART DEVICE

X10DR Plus User Programmer, v3.04G, Transport = \\VC5R0

**X10DR®**  
LIBERATE YOUR MOBILE RADIO

Plus Series  
Model  
☐ Elite Plus  
☒ Pro Plus

Handset Gateway

User Experience Audio Levels Emergency Hardware

Radio PTT Key Beep  
Emergency Key Beep  
Talk Around PTT Key Beep  
Stealth Mode Always Active  
Mute Speaker On PTT  
Mute Speaker On Charge  
LED Charge Indicate  
Auto Turn On When Charging  
Minimum Volume Is Off  
Handover Monitor (when fitted)  
Internal Mic Only Operation

Out of Range Auto Turn Off Timer (in hours)  
Low Battery Beep Voltage (in volts)  
Low Battery Beep Interval Time (in minutes)

Elite Only Options  
Handfree Function  
Toggle PTT / TA Button Assignment  
Command Relay Mode

LOCK SETTINGS  
LOAD FILE  
SAVE FILE  
DEFAULTS  
EXIT

READ DEVICE PROGRAM DEVICE RESTART DEVICE

X10DR Plus User Programmer, v3.04G, Transport = \\VC5R0

**X10DR®**  
LIBERATE YOUR MOBILE RADIO

Plus Series  
Model  
☐ Elite Plus  
☒ Pro Plus

Handset Gateway

Audio Levels Hardware

	I/O	Active	Function	Pulse (ms)
Radio PTT	Output	Low	Radio PTT	0
Radio Emergency	Output	Low	Emergency	0
Radio COR	Input	Low	Radio COR	0
Function 1	Input	Low	Disabled	0
Function 2	Input	Low	Disabled	0
Function 3	Output	Low	Disabled	0
Function 4	Output	Low	Disabled	0
Function 5	Output	High	Disabled	0
Function 6	Output	High	Handset in Cradle	0

LOCK SETTINGS  
LOAD FILE  
SAVE FILE  
DEFAULTS  
EXIT

READ DEVICE PROGRAM DEVICE RESTART DEVICE



All rights reserved Wireless Corporation Limited ©2022  
Wireless Pacific™, X10DR®, Liberate your mobile™, Find Me™, Powerfully Simple™ and their logos are  
trademarks or registered trademarks of Wireless Corporation Limited : Manual revision 1.2