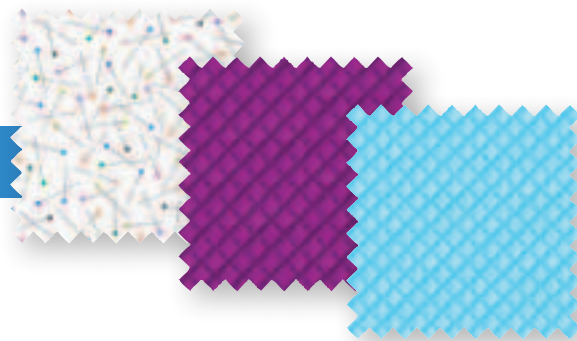
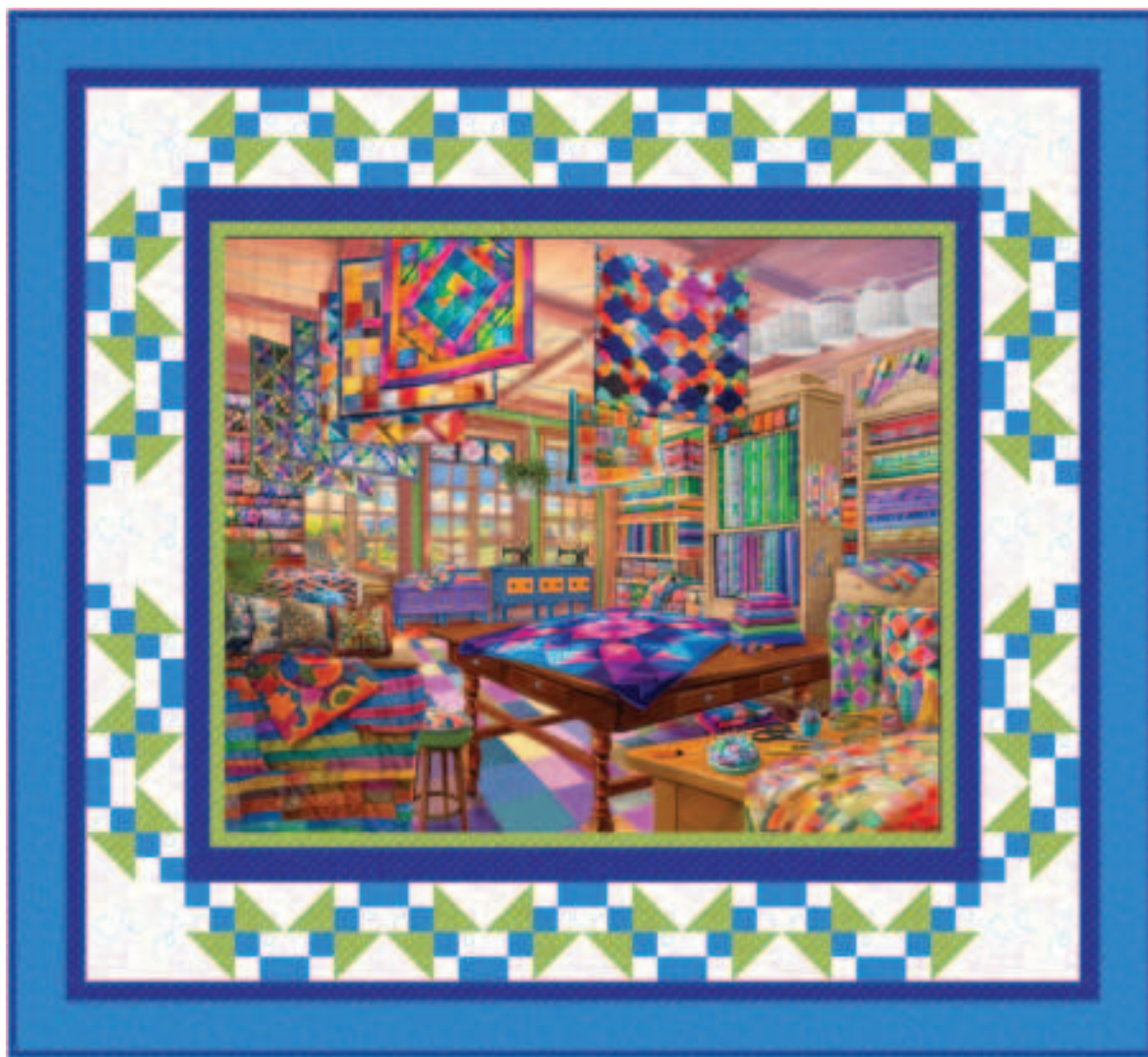


Love of Quilting

Love of Quilting Quilt designed by Cyndi Hershey



Approximate size: 57" x 52"



*Featuring fabrics from the Love of Quilting fabric collection
by Bigelow Illustrations*

P&B Textiles • pbtex.com • 800-351-9087 • 208 Clock Tower Square, Portsmouth, RI 02871



Love of Quilting

Fabric collection by Bigelow Illustrations
Love of Quilting Quilt designed by Cyndi Hershey
Finished size approximately: 57" x 52"

Yardage:

Fabric A	LOQU5994-PA.....	1 panel
Fabric B	LOQU5996-DB	1 yard
Fabric C	LOQU5996-G	1/2 yard
Fabric D	OSTS6015-B	7/8 yard
Fabric E	OSTS6015-WMU.....	3/4 yard
Backing	LOQU5995-LS.....	3 1/2 yards
Batting	65" x 60"

Cutting Instructions:

Please read all instructions carefully before beginning. Strips are cut across the width of fabric **WOF** (perpendicular to selvages) unless otherwise stated. All seams are sewn with 1/4" seam unless otherwise stated. Label all pieces.

Fabric A:

- Fussy cut one 36 1/2" x 30 1/2" rectangle centered on the design. (**Quilt Center**)

Fabric B:

- Cut five 1 1/2" x WOF strips. Sew the strips together end to end with diagonal seams and cut two 1 1/2" x 52 1/2" strips and two 1 1/2" x 45 1/2" strips. (**Inner Border**)
- Cut two 1 3/4" x WOF strips; sub-cut two 1 3/4" x 32" strips. (**Quilt Center**)
- Cut two 2 1/4" x WOF strips; sub-cut two 2 1/4" x 40 1/2" strips. (**Quilt Center**)
- Cut six 2 1/2" x WOF strips. (**Binding**)

Fabric C:

- Cut four 1 1/4" x WOF strips; sub-cut two 1 1/4" x 38" strips and two 1 1/4" x 30 1/2" strips. (**Quilt Center**)
- Cut three 3 1/2" x WOF strips; sub-cut twenty-eight 3 1/2" squares. (**Blocks**)

Fabric D:

- Cut five 1 3/4" x WOF strips. (**Blocks**)
- Cut six 3" x WOF strips. Sew the strips together end to end with diagonal seams and cut two 3" x 57 1/2" strips and two 3" x 47 1/2" strips. (**Outer Border**)

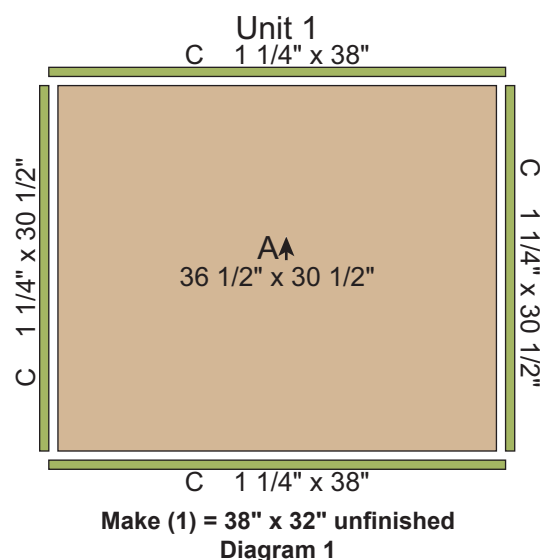
Fabric E:

- Cut five 1 3/4" x WOF strips. (**Blocks**)
- Cut three 3 1/2" x WOF strips; sub-cut twenty-eight 3 1/2" squares. (**Blocks**)
- Cut one 5 1/2" x WOF strip; sub-cut six 5 1/2" squares. (**Pieced Border**)

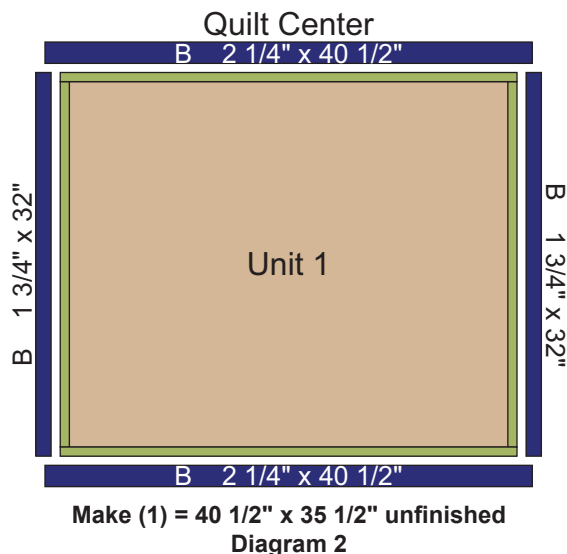
Piecing Instructions:

Note: Pay attention to the unit orientations while assembling the various components.

- Sew one 1 1/4" x 30 1/2" **Fabric C** strip to each side of the 36 1/2" x 30 1/2" **Fabric A** rectangle. Sew one 1 1/4" x 38" **Fabric C** strip to the top and bottom of the **Fabric A** rectangle to make (1) 38" x 32" Unit 1 rectangle. (Diagram 1)



- Sew one 1 3/4" x 32" **Fabric B** strip to each side of the Unit 1 rectangle. Sew one 2 1/4" x 40 1/2" **Fabric B** strip to the top and bottom of the Unit 1 rectangle to make the 40 1/2" x 35 1/2" Quilt Center. (Diagram 2)



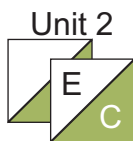
3. Place one 3 1/2" **Fabric C** square on top of one 3 1/2" **Fabric E** square, right sides together. Draw a line across the diagonal of the top square. (Diagram 3) Sew 1/4" away from each side of the drawn diagonal line. (Diagram 3) Cut the two squares apart on the drawn diagonal line (Diagram 4) to make two half-square triangles. Trim the half-square triangles to measure 3" to make two Unit 2 squares. (Diagram 5) Repeat to make an additional fifty-four Unit 2 squares.



Diagram 3



Diagram 4



Unit 2
Make (56)
3" x 3"
unfinished
Diagram 5

4. Sew one 1 3/4" x WOF **Fabric E** strip to the left side of one 1 3/4" x WOF **Fabric D** strip to make one 3" x WOF Strip Set. (Diagram 6) Repeat to make an additional four Strip Sets.
5. From the five Strip Sets cut (112) 3" x 1 3/4" Unit 3 rectangles. (Diagram 7)

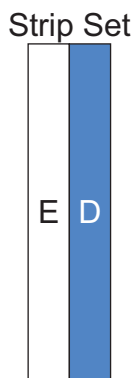
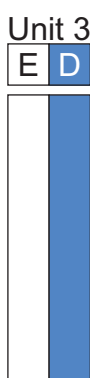
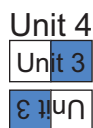


Diagram 6



Unit 3
Make (112) = 3" x 1 3/4"
unfinished
Diagram 7

6. Paying attention to the unit orientations, sew together two Unit 3 rectangles lengthwise to make one 3" Unit 4 squares. (Diagram 8) Repeat to make an additional fifty-five Unit 4 squares.



Unit 4
Make (56) = 3" x 3" unfinished
Diagram 8

7. Sew one Unit 2 square to the left side of one Unit 4 square to make the top row. Paying attention to the unit orientations, sew one Unit 4 square to the left side of one Unit 2 square to make the bottom row. Sew together the two rows lengthwise to make one 5 1/2" Block One square. (Diagram 9) Repeat to make an additional twenty-seven Block One squares.



Block One
Make (28) = 5 1/2" x 5 1/2" unfinished
Diagram 9

8. Sew together three Block One square, one 5 1/2" **Fabric E** square and three Block One squares, in that order from top to bottom, to make the 5 1/2" x 35 1/2" Left Side Border. (Diagram 10) Repeat to make the Right Side Border. (Diagram 11)

Left Side
Border



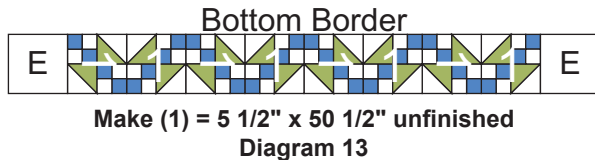
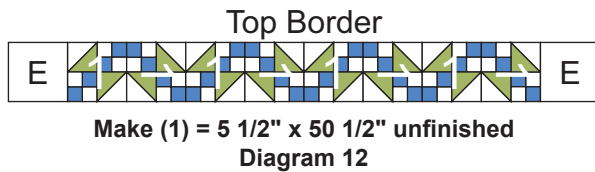
Make (1) = 5 1/2" x 35 1/2"
unfinished
Diagram 10

Right Side
Border



Make (1) = 5 1/2" x 35 1/2"
unfinished
Diagram 11

9. Paying attention to the block orientations, sew together one 5 1/2" **Fabric E** square, eight Block One squares and one 5 1/2" **Fabric E** square, in that order from left to right, to make the 5 1/2" x 50 1/2" Top Border. (Diagram 12) Repeat to make the Bottom Border. (Diagram 13)

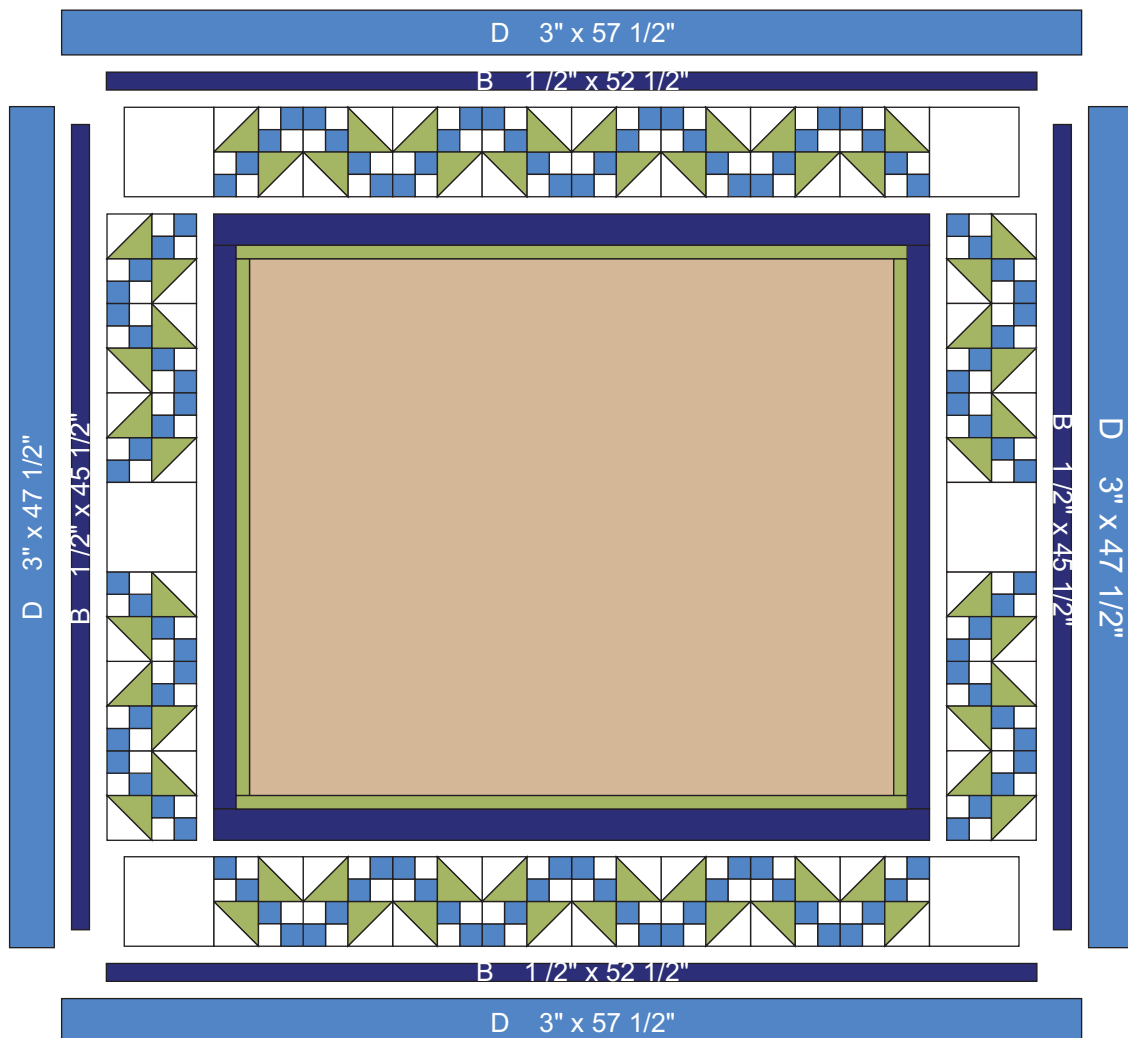


Finishing:

13. Prepare backing using two widths of fabric. Press seams open. Trim to 65" x 60".
14. Layer the quilt, batting and backing. Baste layers together.
15. Quilt as desired.
16. Trim layers even with quilt top, squaring corners.
17. Attach 2 1/2" **Fabric B** binding strips using your favorite method.

Quilt Assembly:

10. Sew the Left Side Border and Right Side Border to the left and right sides of the Quilt Center. Sew the Top Border and Bottom Border to the top and to the bottom of the Quilt Center.
11. Sew one 1 1/2" x 45 1/2" **Fabric B** strip to each side of the Quilt Center. Sew one 1 1/2" x 52 1/2" **Fabric B** strip to the top and bottom of the Quilt Center.
12. Sew one 3" x 47 1/2" **Fabric D** strip to each side of the Quilt Center. Sew one 3" x 57 1/2" **Fabric D** strip to the top and bottom of the Quilt Center to make the quilt top.



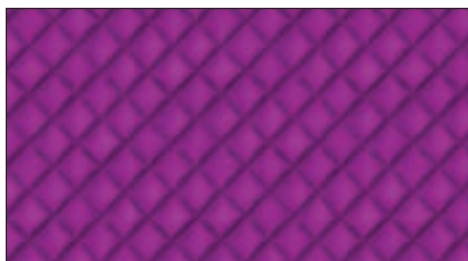
Quilt Diagram



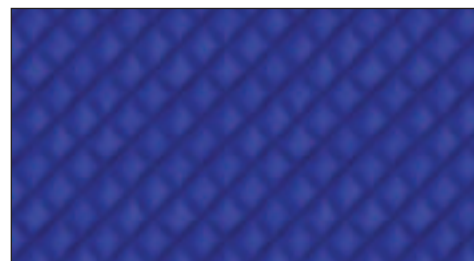
LOQU5994-PA
Fabric A



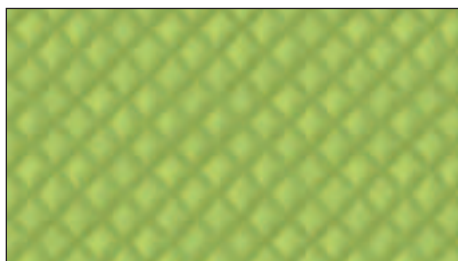
LOQU5995-LS †



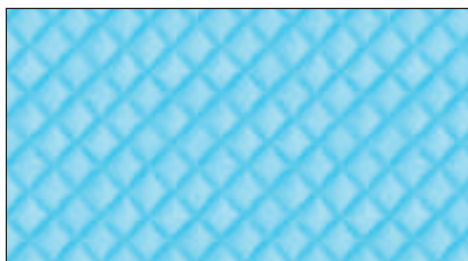
LOQU5996-C



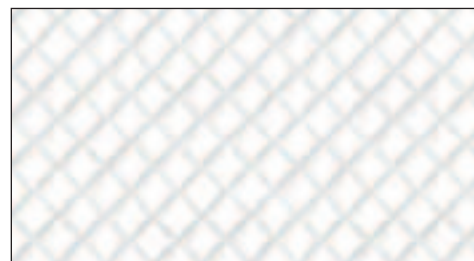
LOQU5996-DB*
Fabric B



LOQU5996-G
Fabric C



LOQU5996-LB



LOQU5996-W



OSTS6015-B
Fabric D



OSTS6015-WMU
Fabric E

Quilt Fabrics in Bold

* Binding

† Backing

